



**NetOp School 5.5 Student**

© 2007 Danware Data A/S

---

Copyright © 2007 Danware Data A/S. All rights reserved

Document Revision: 2007164

Please send any comments to:

Danware Data A/S

Bregnerodvej 127

DK-3460 Birkerød

Denmark

Tel: +45 45 90 25 25

Fax: +45 45 90 25 26

E-mail: [info@netop.com](mailto:info@netop.com)

Internet: <http://www.netop.com>

---

## NetOp School 5.5 Student

© 2007 Danware Data A/S

### Warranty

Danware Data A/S warrants the quality of the physical material of the user package, that is manual and CD-ROM. If these items are defective, we will exchange them at no cost within 60 days of purchase from Danware Data.

### Disclaimer

Danware Data A/S denies any and all responsibility for damages caused directly or indirectly as a result of any faults with the enclosed programs and/or documentation.

### Licence

Danware Data A/S retains the copyright to the user manual. All patent, copyright and other proprietary rights in and to the programs will remain with Danware Data A/S or its licensors. Your purchase gives you the right to copy and use the programs as described on your Danware License Certificate included in your package.

Please save your Danware License Certificate and your original CD-ROM. They serve as your legal right to use the software. You may also need them in order to receive future updates to the product.

Please be careful not to install or run the software on more PCs than your Danware License Certificates permits you to do.

The programs may be copied for backup purposes only, and only as long as the above mentioned rules are adhered to

### Trademarks

NetOp® and the red kite are registered trademarks of Danware Data A/S. All other products mentioned in this manual are trademarks of their respective manufacturers.

#### **Publisher**

*Danware Data A/S*

#### **Technical Editors**

*Lars Lyhne*

*Carsten Grubb*

#### **Team Coordinator**

*Ole Haag*

# Table of Contents

Foreword	0
<b>1 Introduction</b>	<b>1</b>
1.1 About NetOp School Documentation	1
1.1.1 Typographical Conventions	1
1.1.2 Documentation Updates	2
1.2 System Overview	2
1.2.1 Operating Systems	3
1.2.2 Communication Devices	3
1.2.3 Compatibility	3
1.2.4 Teaching Environment	4
1.3 About	5
1.3.1 Advanced Display Info	6
1.3.2 Communication Info	7
1.4 Student User Options	7
1.5 Loading Student - First Time	8
1.6 Student User Options	10
<b>2 Daily Use Student</b>	<b>10</b>
2.1 Tests	11
2.1.1 Unrestricted Test	12
2.1.2 Restricted Test	12
2.2 Communication	12
2.2.1 Teaching Actions	12
2.2.2 Request Help	13
2.2.3 Message	14
2.2.4 Chat Student	15
2.2.5 Audio/Video Chat	16
2.2.6 Invitation	17
2.3 Actions	17
2.3.1 Demonstrate Toolbox	17
2.3.2 Locked Keyboard and Mouse	18
2.3.3 Assistant Teacher Functionality	19
2.3.4 Changing Student Stealth Mode	19
2.4 NetOp Marker Utility	20
2.4.1 NetOp Marker Utility - Details	20
<b>3 Internet Access</b>	<b>21</b>
<b>4 Program Access</b>	<b>21</b>
<b>5 Student Window</b>	<b>22</b>
5.1 Student Window - Tabs	23
5.1.1 General Tab	24

5.1.2 Class Tab .....	25
5.1.3 Messages Tab .....	25
5.1.4 Recordings Tab .....	26
<b>5.2 Student Options .....</b>	<b>26</b>
5.2.1 Options - Audio .....	27
5.2.1.1 Options - Advanced Audio.....	28
5.2.2 Options - Class .....	28
5.2.2.1 Class Server Setup - Student.....	29
5.2.3 Options - Connection .....	30
5.2.4 Options - General .....	31
5.2.5 Options - Help Request .....	32
5.2.6 Options - Protection .....	33
5.2.7 Options - Student Login .....	34
5.2.8 Options - Web Update .....	35
<b>6 Student Security .....</b>	<b>37</b>
<b>Index .....</b>	<b>39</b>

# 1 Introduction

Welcome to NetOp School

You are a Teacher, an Instructor, a Supervisor. Your audience - students / colleagues - may be physically right in front of you in a classroom or they may be spread around the library, campus, offices or departments, in the same building, city or around the globe.

NetOp School is a powerful software package that connects your computer with the computers of your audience creating an interactive classroom on the network. Furthermore, you get a number of effective teaching tools such as the ability to show your screen to the entire class, monitor classroom screens, create and execute tests and other tools to help you supervise and stay in control of classroom activity.

If you encounter difficulties using this product, first consult with this Help system.

Additional troubleshooting guidance is available at [help.netop.com](http://help.netop.com) in a 'KnowledgeBase' that provide detailed

The local supplier of your NetOp product is available for advising you on how to obtain maximum benefit from your NetOp product.

As a last resort, you are invited to submit a support request directly to [NetOp Support](#) by using the 'Contact Technical Support' form. We will get back to you as soon as possible with a solution to your problem.

*NetOp Product Services*

This section contains the sections and topics:

[About NetOp School Documentation](#)

[System Overview](#)

[About NetOp Student](#)

## 1.1 About NetOp School Documentation

NetOp School documentation includes the introductory booklet 'Teaching with NetOp School', the help systems 'NetOp Teacher Help' and 'NetOp Student Help', and two pdf manuals: User's Manual and Advanced User's Manual.

'Teaching with NetOp School' is included as a printed booklet when buying a licensed version of NetOp School. All available language versions of this booklet and the above mentioned manuals are included as Portable Document Format (PDF) files on the NetOp School CD and the NetOp Trial Versions CD. In the CD menu, select the desired language and select 'Quick Guide' to display the booklet contents.

This section contains the topics:

[Typographical Conventions](#)

[Documentation Updates](#)

### 1.1.1 Typographical Conventions

<p><b>Note:</b> Teacher with a capital T always refers to the NetOp Teacher module. For clarity, the teacher person is referred to as 'teacher'. Likewise, Student with a capital S always refers to the NetOp Student module. The student person is referred to as 'student'.</p>
--

The following other typographical conventions are used:

SMALL CAPS text represents keyboard keys (a '+' between indicates that keys must be pressed at the same time).

Lucida Console Font text represents keyboard entries.

[Square brackets] are used around optional entries.

<Angle brackets> are used around descriptions of a varying content.

Underlined colored text is a jump hotspot. Click a jump hotspot (the mouse pointer displaying a hand) to jump to another help topic referenced in the jump hotspot.

These window buttons are not explained if they execute their standard functionality:

Ok Click this button to close the window applying selections.

Cancel Click this button to close the window without applying selections.

Help Click this button to open the 'Help' system on the topic of the displayed window.

## 1.1.2 Documentation Updates

From time to time, NetOp School is improved through the release of updated builds of the product.

**Note:** The most recently released build of NetOp School should always be installed in order that the installed product is up to the current standard. It can be downloaded from the [www.netop.com](http://www.netop.com) website (Downloads - Latest builds), and installed provided that a valid license number for the downloaded version of the product is specified. NetOp School includes a Web Update facility that can automatically check for updated builds of installed NetOp School products and download and install them.

Updated builds are documented in the 'README.TXT' file that is installed with the updated build and can be opened from the program folder 'Readme' command, typically 'Start\Programs\NetOp School\Readme'.

Help systems, manuals and 'Teaching with NetOp School' will be updated less frequently. When help systems are updated with changes documented in the 'README.TXT' file, they will accompany an updated build. Updates of 'Teaching with NetOp School' and manuals are designated by a document revision number on page 2 in the format YYYYDDD (Y=year digit, D=day digit).

## 1.2 System Overview

The following chapter outlines system requirements and system specifics.

[Operating Systems](#)

[Communication Devices](#)

[Compatibility](#)

[Teaching Environment](#)

## 1.2.1 Operating Systems

NetOp School version 5.5 can run on computers using the operating systems Microsoft Windows Vista, 2003, XP, 2000, NT, ME, 98 and 95, including operating system supporting terminal services.

NetOp School versions 2.5 and 2.0 can run on the same operating systems excluding Windows 2003.

You may experience insufficient support for Windows XP as well as the latest service packs on other platforms.

NetOp School versions 2.0 and higher are mutually compatible, but features introduced in higher versions are not supported by lower versions, see the topic [Compatibility](#).

NetOp School versions 1.5 and lower can run on computers using the operating systems Microsoft Windows NT, 98, 95 and 3.1x. Version 1.5 can run on NT Terminal Server.

NetOp School versions 1.5 and lower are mutually compatible but incompatible with NetOp School versions 2.0 and higher.

## 1.2.2 Communication Devices

NetOp School functionality relies upon sending data packets between networked computers. These communication devices (protocols) are supported:

- TCP/IP (UDP)
- Terminal Server
- NetBIOS
- IPX
- Wireless

For further information about the communication profiles, see Advanced User's Manual, Communication Profile.

## 1.2.3 Compatibility

This table gives an overview of other current NetOp School products and their compatibility with NetOp School version 5.5.

Product	Version	Language	Latest build	NS v. 5.5 compatibility
NetOp School	5.0	Arabian Chinese Danish Dutch English French German Italian Japanese Spanish	2006057	No. Versions 2.0 to 5.0 are mutually compatible.
	4.0	Arabian Chinese	2006026	No. Versions 2.0 to 5.0 are mutually compatible.



		Danish Dutch English French German Italian Japanese Spanish		
	3.0	Arabian Chinese Danish Dutch English French German Italian Japanese Spanish	2005068	No. Versions 2.0 to 5.0 are mutually compatible.
	2.5	Arabian Chinese Danish Dutch English French German Italian Japanese Spanish	2003147	No. Versions 2.0 to 5.0 are mutually compatible.
	2.0	Danish English French German Italian Japanese Spanish	2002276	No. Versions 2.0 to 5.0 are mutually compatible.
	1.5	English French German Japanese Spanish	2000250	No. Versions 1.0 to 1.5 are mutually compatible.
	1.1	English	1998315	No. Versions 1.0 to 1.5 are mutually compatible.
	1.0	English	33097	No. Versions 1.0 to 1.5 are mutually compatible.

### 1.2.4 Teaching Environment

Using NetOp School, NetOp Teacher is running on some computers and NetOp Student is running on other computers on a network.

NetOp Teacher can run a named class and NetOp Students can connect to a named class to

make a class with one Teacher and multiple Students.

These options are available on the Student for connecting to a class:

**Connect to Class <Class name>** If <Class name> is running, Students automatically connect to it. Otherwise, Students will be waiting for it.

**Browse for Classes** Running classes are browsed for and displayed. Student users can select which class to connect to.

**Be Available for Any Class** Students automatically connect to a running class of which they are a member. Teachers running a class can display available Students to enable teachers to connect or invite available Students to their class.

**Use Class Server** Students connect to a NetOp School Class Server running on the network. If their scheduled class is running, they become connected to it. Otherwise, they become waiting for it.

Depending on the type of teaching environment, one of these options is typically applied to all Students on the network.

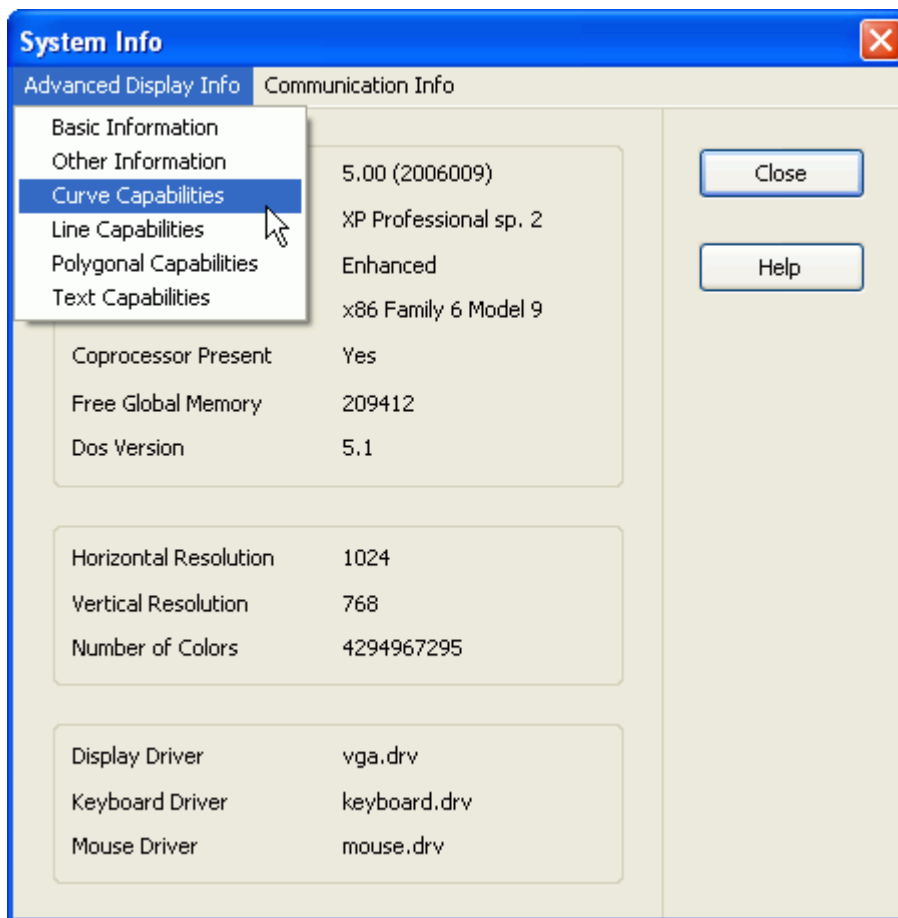
See: [Student - Options](#).

## 1.3 About

Check this window to see which version you are running and the serial number.

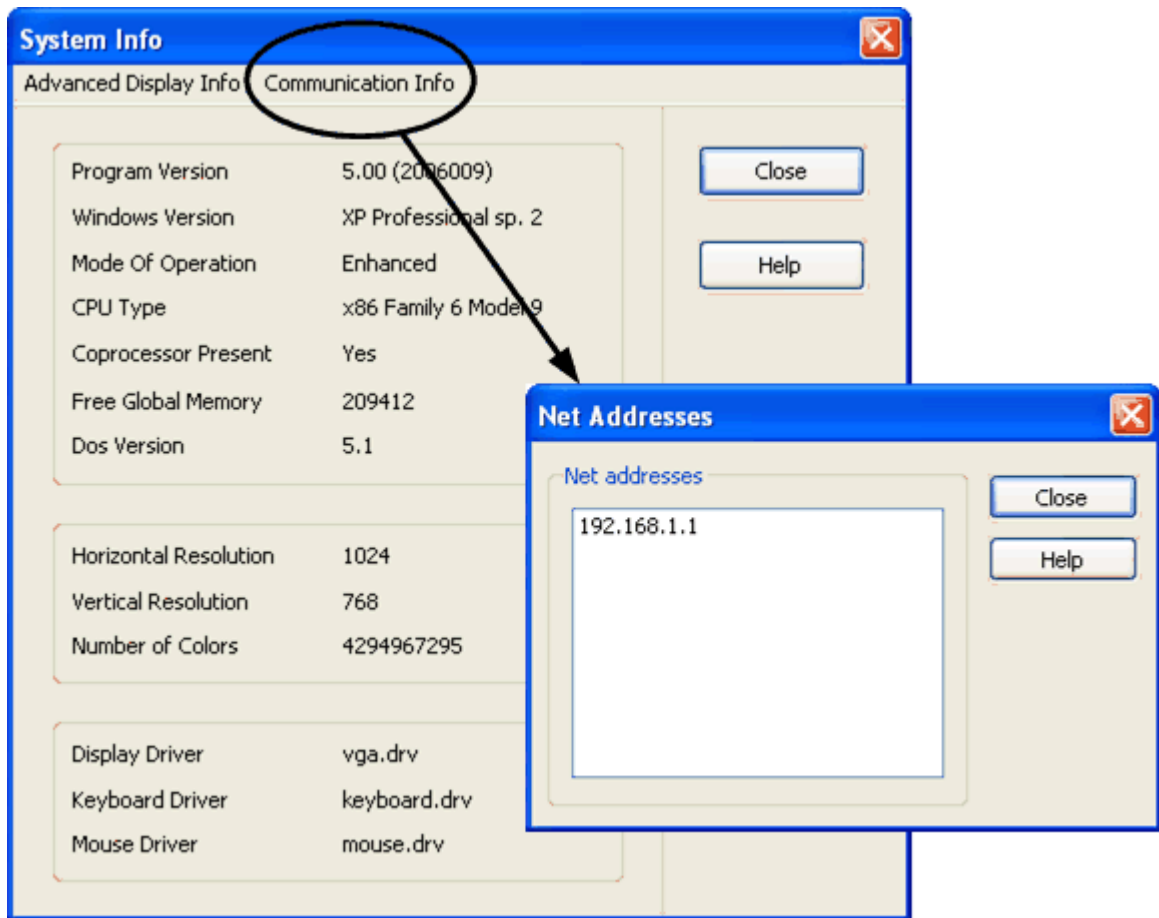
Click 'System Info' to learn about [Advanced Display Info](#) and [Communication Info](#).

### 1.3.1 Advanced Display Info



See all Display Information here along with the Teacher computer's configuration.

### 1.3.2 Communication Info



See IP Address.

See the Net Address (IP Address) of the Teacher computer.

## 1.4 Student User Options

Generally, the class environment is characterized by the teacher controlling the class and executing teaching actions on Students.

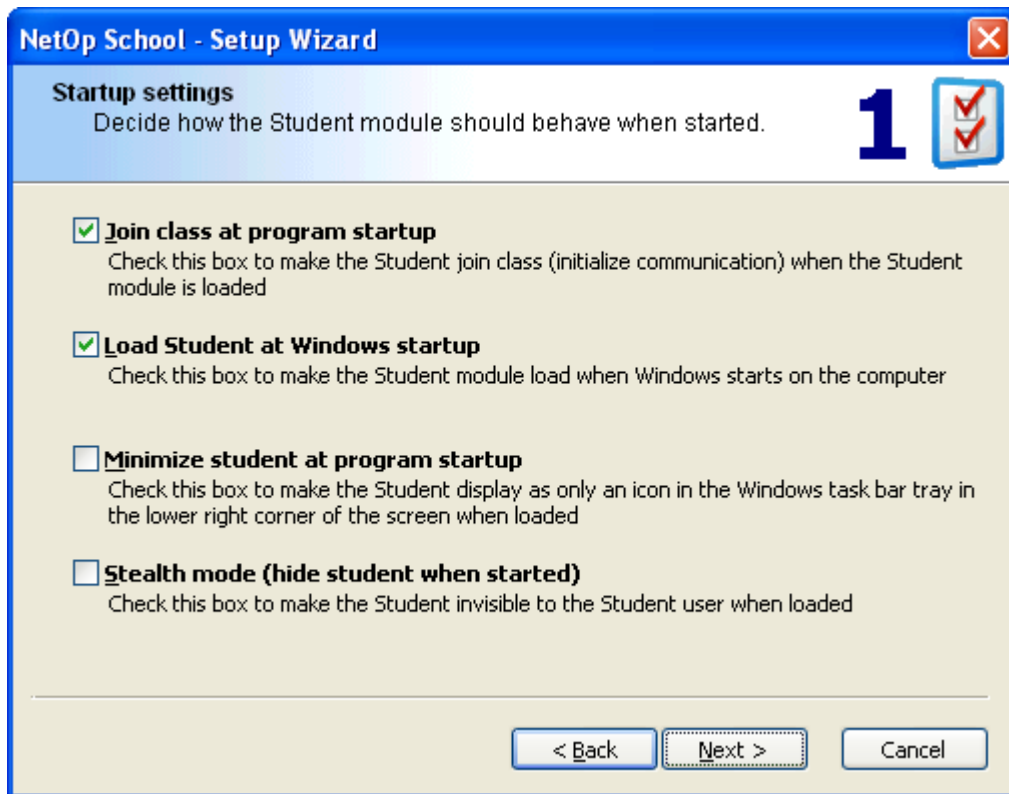
Student users can take part in and respond to interactive teaching actions.

**Note:** NetOp Student Help can be viewed from a Teacher remote controlling a Student.

See: [Daily Use - Student](#) and [Demonstrate Toolbox - Student](#).

## 1.5 Loading Student - First Time

The 1-2-3-Wizard will help you help you to set up the Student module quickly:



Here you decide the Student behavior at start-up.

We recommend that you leave 'Join class at program startup' checked and at least one of the other options.

**Note:** If 'Stealth' is selected and you want to change the settings at a later stage see Changing Student Stealth Mode.

In this screen, select Class connections method and how the Student will be identified by the Teacher interface.

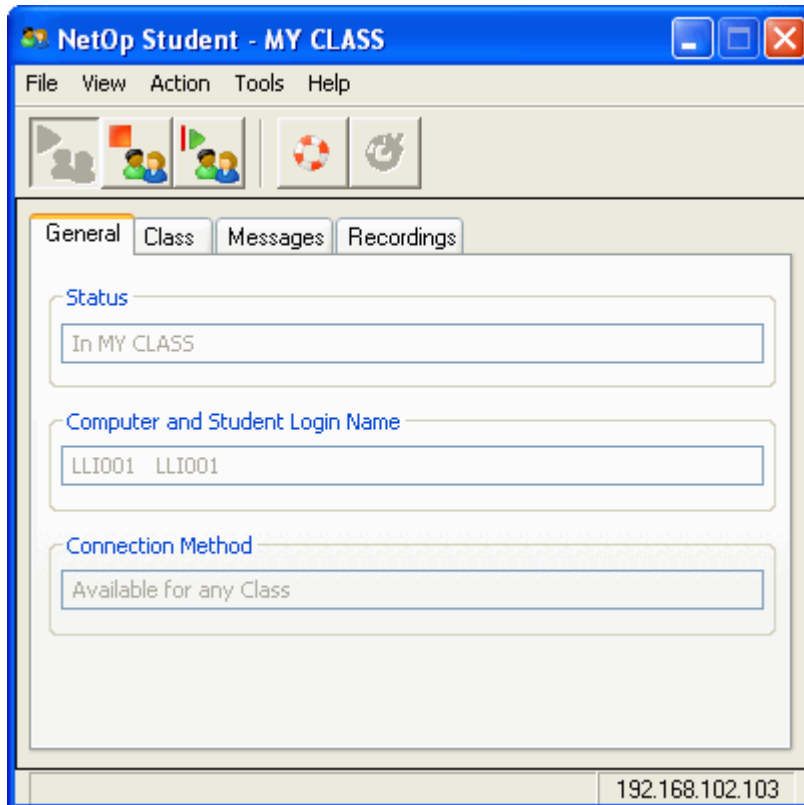
Firstly, select your preferred Student connection method:

- 'Connect to class' forces the Students to be part of a specific group (class). Note, that Student and Teacher 'Class Name' must be identical to enable connection.
- 'Browse for classes' allows the Students to choose between already started classes.
- 'Be available for any class' enables the Teachers to choose from a list of Students.
- Secondly, from the drop-down list select the identifier that suits your setup the best.
- 'Computer name' causes the Student computer's name to be listed on the Teacher's screen. This setup is practical if the computer-lab is used by many Students that share the computers.
- 'Windows login name' is especially useful if you need to identify who was logged on to a certain computer during e.g. a test.
- 'Prompt for login name' prompts the student to enter a name on connection and causes the Student user's name to be listed on the Teacher's screen. This is useful if students bring their own computers and the student names are known or if the classroom is virtual.

**Hint:** Usually 'Computer name', 'Windows login name' or 'Prompt for login name' will provide the Teacher with the best information.

To finalize the Setup Wizard, click 'Next' to the following screens - 'Communication profile' (use default setting (TCP/IP)) and 'Registration' screens.

Now you are ready to use NetOp School Student. The default settings will cause this Student screen to be displayed:



**Note:** A normal installation procedure would be to install one copy of a Student. Make the necessary adjustments and then get familiar with it. Use this experience to use the *Student Deployment* (see Teacher documentation) facility to install Student to the computers.

See: [Daily Use - Student](#) and [Student Window](#).

## 1.6 Student User Options

Generally, the class environment is characterized by the teacher controlling the class and executing teaching actions on Students.

Student users can take part in and respond to interactive teaching actions.

**Note:** NetOp Student Help can be viewed from a Teacher remote controlling a Student.

See: [Daily Use - Student](#) and [Demonstrate Toolbox - Student](#).

## 2 Daily Use Student

The following chapter takes you through a wide variety of everyday tasks.

[Tests](#)

[Locked Keyboard and Mouse](#)

[Communication](#)



[NetOp Marker Utility](#)

[Internet access](#)

[Program Access](#)[Assistant Teacher Functionality.](#)

First, you should find out how your Student application has been set up, because it gives you different possibilities.

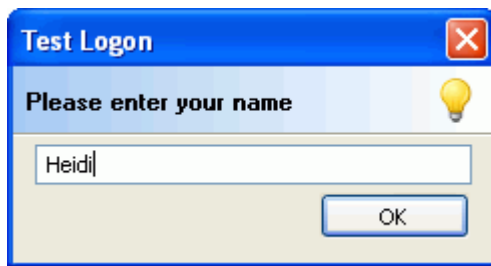
There are two basic ways:

- |   |   |              |  |
|---|---|--------------|--|
| 1 |  | Visible mode | If the NetOp <a href="#">Student Window</a> is minimized, double-click the two students. The window opens and you have access to Student specific actions. |
| 2 |  | Stealth mode | If NetOp Student runs in <a href="#">Stealth mode</a> , you have but one option. Double-click the buoy and write a question in the 'Help Request window'.  |

See also: [Student Window](#).

## 2.1 Tests

Tests are started by the teacher and open by themselves. The only thing you have to do to begin answering is to enter your name.



When you have entered your name and clicked 'Ok' you are ready to take the test.

Both tests and questions can have time limits.

There are two types of tests:

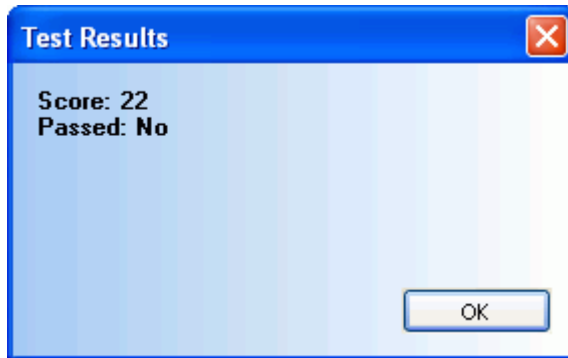
[Unrestricted Test](#)

[Restricted Test](#)

**Warning!** If you click the 'Close' button on the on the Test window you will be prompted to confirm that your test shall terminate.

When you submit the test you will receive an auto-generated test result:





It is up to you whether you answer all the questions or submit without answering all the questions.

Bear in mind that a test can have a time limit. If the time limit is exceeded the test will terminate automatically. Questions can have time limits as well. If the time limit is exceeded on a question the test will proceed to the next question.

### 2.1.1 Unrestricted Test

This test type allows you to skip a question and return to it at a later stage. It is also possible to return to an already answered question to change your answer.

If you wish to submit your test before the time limit, go to the 'End and Submit Test' page.

**Hint:** Use the 'Cover Page' to refresh your memory of the test instructions.

### 2.1.2 Restricted Test

This test type forces you to answer the questions sequentially. You are neither able to return to an already answered question at a later stage nor are you allowed to answer the questions at random.

## 2.2 Communication

As a student you have the possibility to communicate with your peers and teacher - but the communication has to be initiated by the teacher. The only way a student can begin communication is by clicking the 'Lifebuoy'.

There are four ways to communicate of which you only can initiate 'Help Request':

[Request Help](#)

[Message](#)

[Chat](#)

[Audio/Video Chat](#)

[Invitation](#)

### 2.2.1 Teaching Actions

The teacher can execute these teaching actions on selected Students:

Demonstrate The teacher can demonstrate his screen on your computer. You may have the

possibility to take over the demonstration.  
Usually, your computer will be locked during the demonstration.

Attention	The teacher can stop all activity on your computer.
Control	The teacher can either monitor what you are doing or remote control your computer.
Communication	The teacher and you can communicate via messages, chat or audio/video chat.  You cannot start the communication, but you can <a href="#">Request Help</a> .
Workgroup	You can work in teams with your fellow students. One among you will be assigned <a href="#">Assistant Teacher</a> .
Run	The teacher can start tests, surveys and programs on your computer.
Command	The teacher can restart your computer, rejoin you to the class etc.
File operations	The teacher can transfer and synchronize files on your computer.
Set Policy	The teacher can invoke policies prohibiting you to start certain programs and/or to visit certain Internet sites.
Record	The teacher can record what you are doing on your computer and the teacher can show own recordings.

[Communication](#)

[Request Help](#)

[Message](#)

[Chat](#)

[Audio/Video Chat](#)

[Invitation](#)

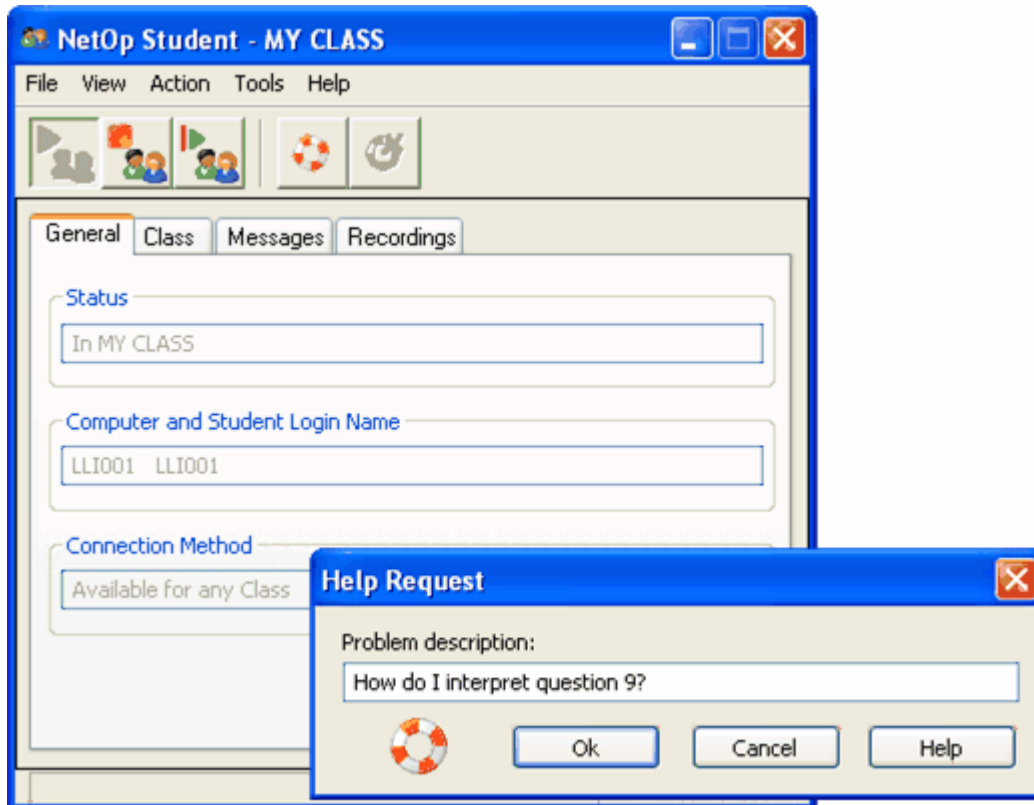
## 2.2.2 Request Help



The lifebuoy is the symbol to look for if you are in trouble.

If you run in Stealth mode look for the lifebuoy in the Tray. Double-click it to open the dialog box. Write the question and click 'Ok' to send it to the Teacher.

If you are running in Visible mode either click the lifebuoy button or select Action > Request help to launch this dialog:



If you resolve your problem before the teacher has had an opportunity to get back to you, click the 'Cancel Help' button.



### 2.2.3 Message

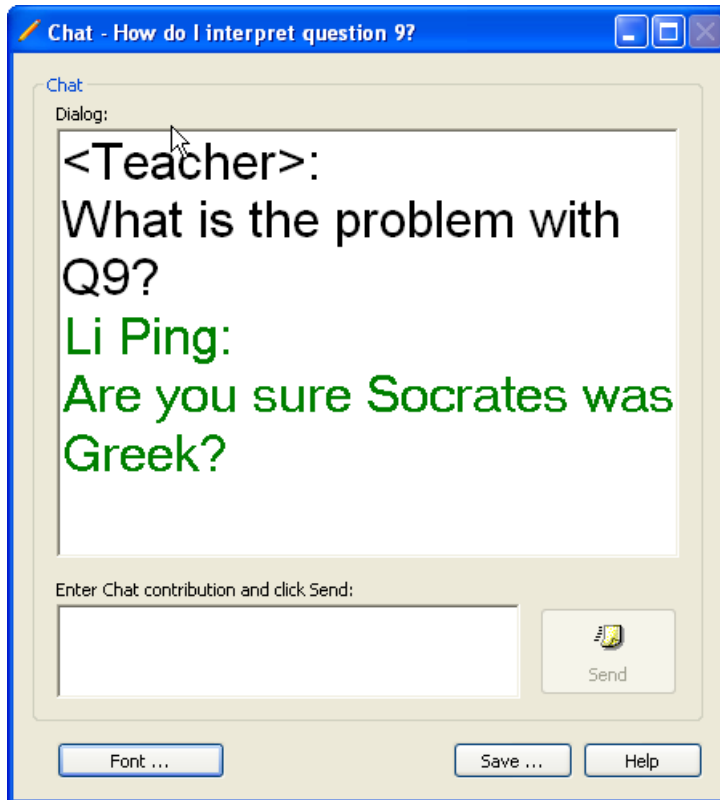


The message usually is used by the teacher for replying the 'Help Request' sent by you. It is not possible to relay the message to other persons.

It is possible to save, print and delete messages.

See: [Student Window - Tabs](#) and [Messages Tab](#).

### 2.2.4 Chat Student

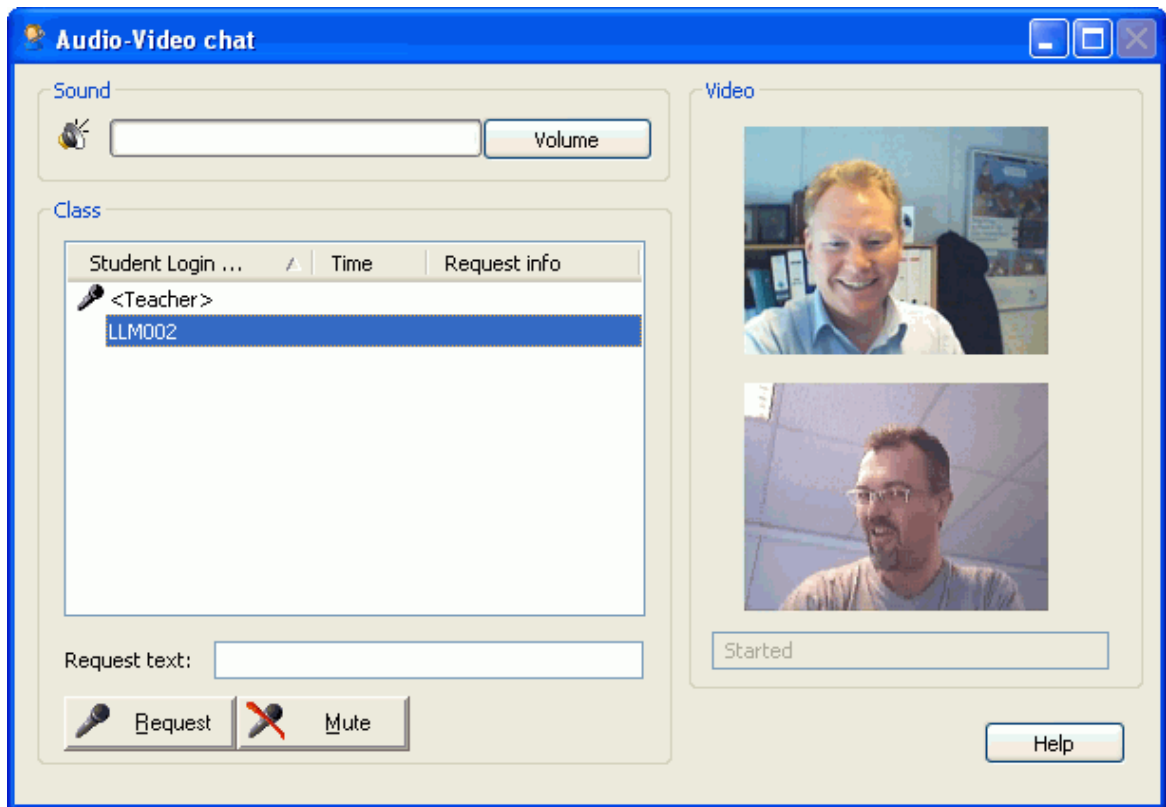


The chat window can only be started by the teacher - usually as a consequence of a 'Help Request' sent by you.

To personalize your chat you can change the font.

You can save it to a folder or removable memory.

## 2.2.5 Audio/Video Chat



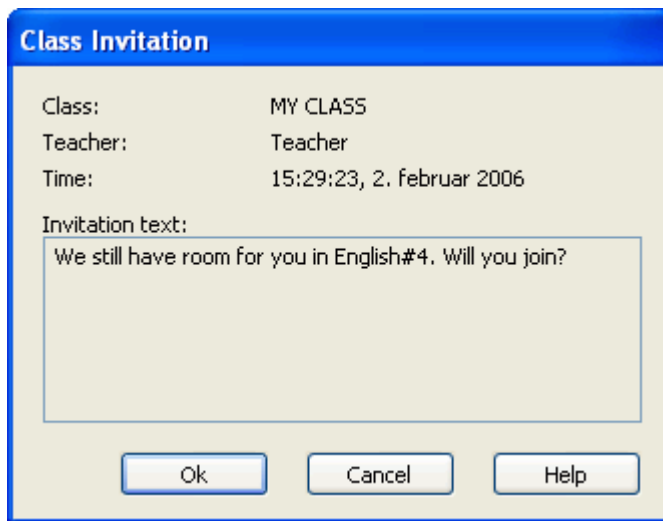
The audio chat allows you to talk to the teacher - or if the teacher selects 'Open Discussion' - you may talk to any of your fellow students.

The microphone placed to the left of a student indicates who can talk.

If you have a web cam video chat is possible as well.

## 2.2.6 Invitation

If your student is set up to be 'Available to any class' you will be asked to join classes via this dialogue:



Click 'Ok' to join and 'Cancel' to pass the invitation.

To setup this go to [Options - Class](#) and select 'Be available to any class'.

## 2.3 Actions

The following chapter takes you through the following tasks:

[Demonstrate Toolbox](#)

[Locked Keyboard and Mouse](#)

[Assistant Teacher Functionality](#)

[Changing Student Stealth Mode](#)

### 2.3.1 Demonstrate Toolbox



The toolbox that the Student sees during a demonstrate session if the option, 'Launch Toolbox' is checked in Options.

Give the control to the Student from the drop-down list from the 'Screen Control' menu bar on your screen. The selected Student has control (the 'chalk') of your computer until you press CTRL and release the 'Pass the Chalk-button'.



The student can click this to request the microphone. The button is only active during an Audio Chat session.



The student can click this if she has trouble understanding the demonstration.



or

The student can click this to request control of the keyboard used for the present demonstration.



The student can end her own demonstration by clicking 'Pass the Chalk'.

See: [Locked Keyboard and Mouse](#).

### 2.3.2 Locked Keyboard and Mouse

While the teacher is doing a demonstration your keyboard and mouse will be locked.

During a demonstration you may have a tool box that allows you to:



- Request microphone during chat.
- [Communication](#)
- Request keyboard control - ask to take over the demonstration

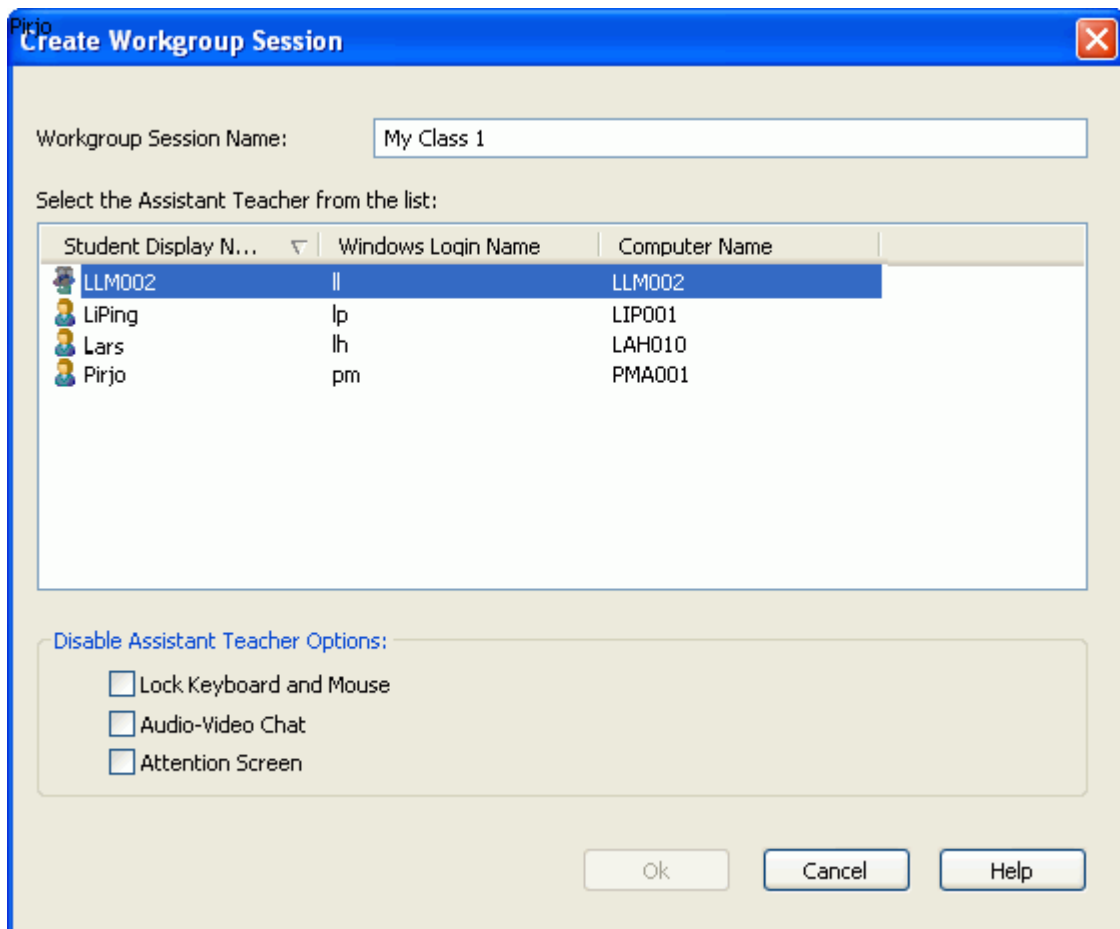
This may also happen if the teacher decides to remote control you because you are missing a file or your computer does not work correctly.

Your keyboard and mouse may also be locked by the teacher during a remote control session.

**Hint:** See [Options - Protection](#) to learn more about Student Protection.

### 2.3.3 Assistant Teacher Functionality

The teacher puts together the Workgroup and appoints one Student to be Assistant Teacher. The Assistant Teacher heads a Workgroup.



Follow these steps on the Teacher console:

1. Select Students from Details View.
2. Click the Workgroup button.
3. Select a Student to head the workgroup.
4. Click 'OK'.

The selected Student acts as a Teacher.

**Note:** The Assistant Teacher will have most of the Teacher functionality, unless decided otherwise by the Teacher.

### 2.3.4 Changing Student Stealth Mode

If the Student runs Stealth mode and you need to change the set up the File Manager can help you. Select the Student computer in question and find the executable file;

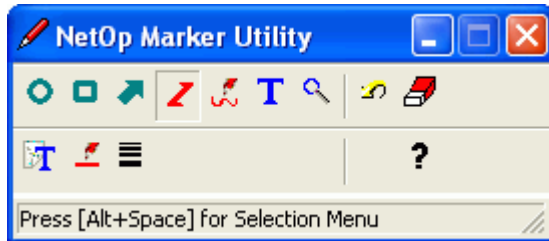
```
C:\Program Files\Danware Data\NetOp School\STUDENT>Showhost.exe
```



Double-click it and the Student will be restored.

Now, start a remote control session, run the Student Setup Wizard again and make changes.

## 2.4 NetOp Marker Utility



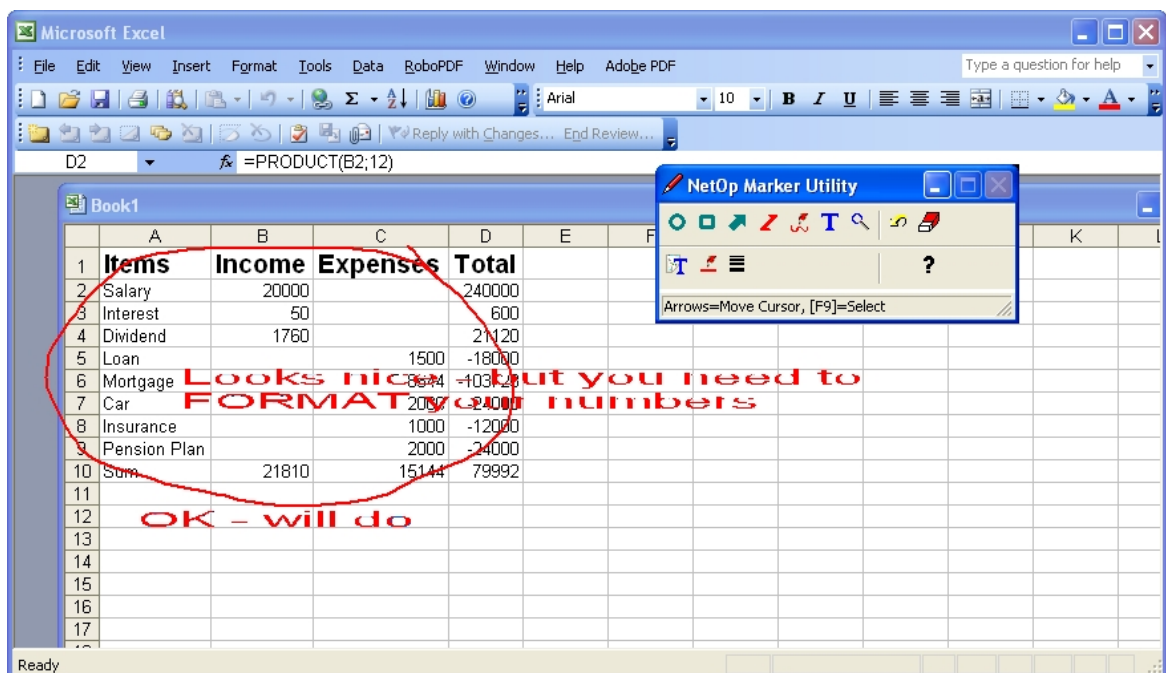
NetOp Marker Utility allows both the Teacher computer and the remote controlled Student computer to draw and write on the Student screen.

The student cannot initiate this feature. It only opens if the student is remote controlled and the teacher decides to start the Marker Utility.

**Note:** The texts and lines 'float' over the desktop. If other applications are opened texts and lines remain on top.

See: [NetOp Marker Utility - Details.](#)




### 2.4.1 NetOp Marker Utility - Details



NetOp Marker Utility allows both the Teacher and the remote controlled Student to draw and write on the Student screen.

**Note:** The texts and lines 'float' over the desktop. If other applications are opened texts and lines remain on top.

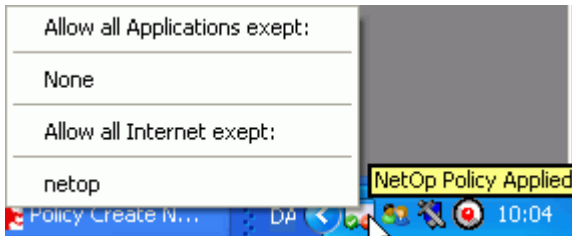
The Marker Utility consists of drawing and text tools, and editing.

	Draw ellipses.		Magnify a certain area.
	Draw rectangles.		Undo last action.
	Draw arrows.		Erase everything that was drawn and written.
	Draw straight lines.		Change text color.
	Draw freehand lines.		Change line color.
	Insert text.		Change line thickness.

### 3 Internet Access

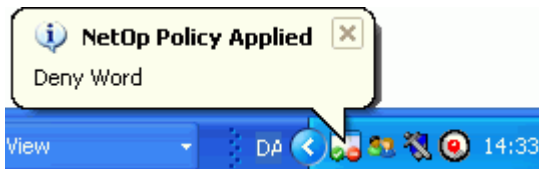
The teacher can apply policies to control Internet access. Depending on the nature of the Policy the Internet access may:

- be unavailable. You may be able to start the Internet browser but you will not be able to open any web-pages.
- be limited. Only some Teacher-defined web-pages are open.
- be fully open.

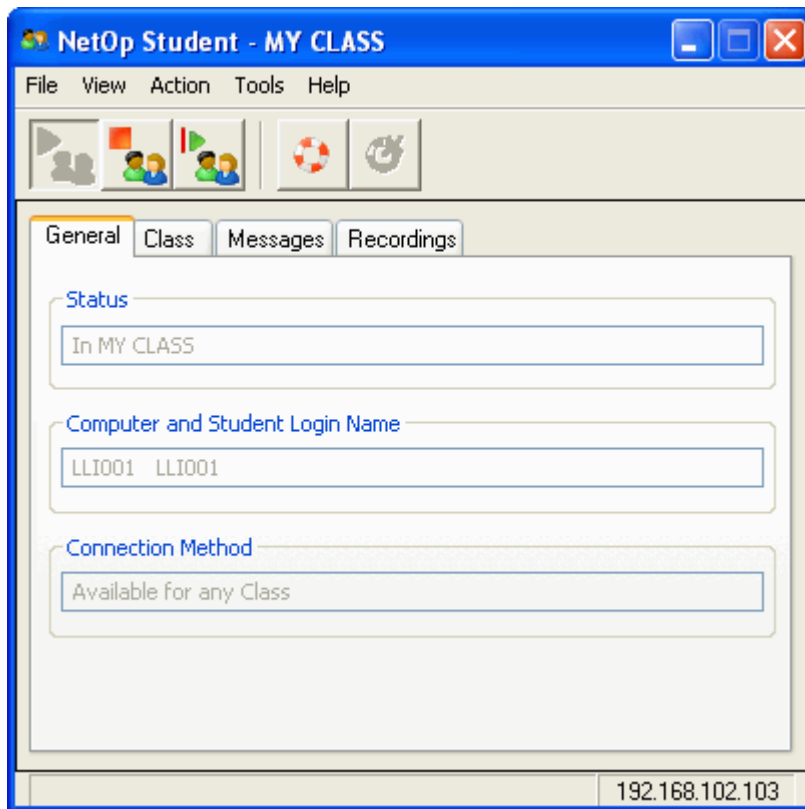


### 4 Program Access

The teacher can apply policies to control Program access. Depending on the nature of the Policy, some programs may be unavailable. Clicking the Policy icon in the tray will reveal the contents of the applied policy.



## 5 Student Window



The Student window is only visible and accessible if NetOp Student has been installed in visible mode.

### Menu

**File** Click this and select 'Exit'.

**View** Click this to select/deselect a visible toolbar.

- Action**
- Join Class: Select to join class.
  - Leave Class: Select to leave class.
  - Rejoin Class: Select to rejoin the class.
  - Request Help: Select to ask your teacher for assistance.
  - Cancel Help: Select to cancel your Help request.
  - End Session: Select this if you do not want to be remote controlled.

- Tools**
- Options: Opens an [Student - Options](#) window
  - Protection Password: See [Student Security](#).
  - Check for New Updates: Selecting this causes the Student to connect to the NetOp update-server. See Options - Web Update.
  - Run Setup Wizard: Selecting this causes the Student Setup Wizard to open. See [Loading Student - First Time](#).

- Help
- Contents: Opens the help system.
  - Online support: Opens an online form where you can contact NetOp Support.
  - Online registration: Opens an online registration form.
  - About...: Opens the About window - use information from this window when contacting NetOp Support or a NetOp reseller.

#### Buttons



At startup - if joining the class is not predefined - you have to click this button to connect to the designated class



Clicking this during a lesson disconnects you from your designated class.



If you have been signed in you class - click this to join the class again.



If you encounter problems click this. Enter you problem and hit 'Send'. Your request will pop up on the teacher's computer.



If you resolve your problem before the teacher has had an opportunity to get back to you, click the 'Cancel Help' button.

See: [Student Window - Tabs](#).

## 5.1 Student Window - Tabs

[General Tab](#) Information about Student connection. Useful in error finding situations.

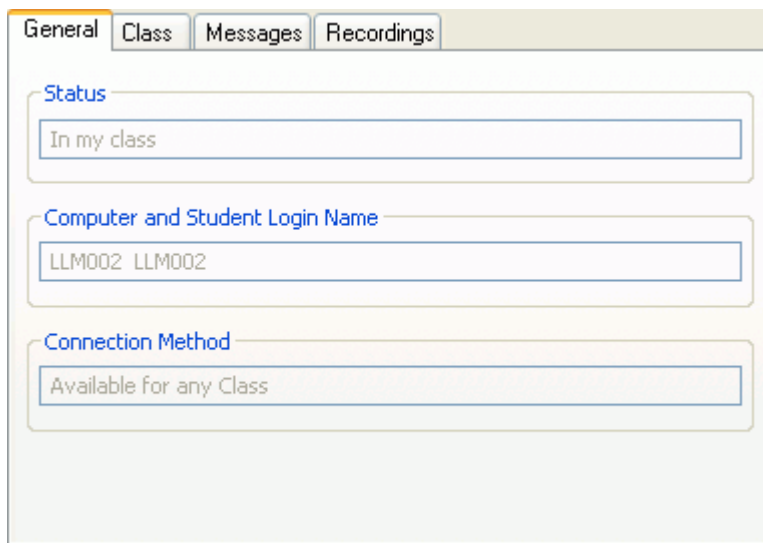
[Class Tab](#) Information about other participants in the class.

[Messages Tab](#) List of received messages from the teacher. Double-click to view.

[Recordings Tab](#) List of received recordings from the teacher. Double-click replay.

<p><b>Note:</b> It is only possible to see the tabs in the 'Student Window', if you are running in 'Visible Mode'.</p>
--

### 5.1.1 General Tab



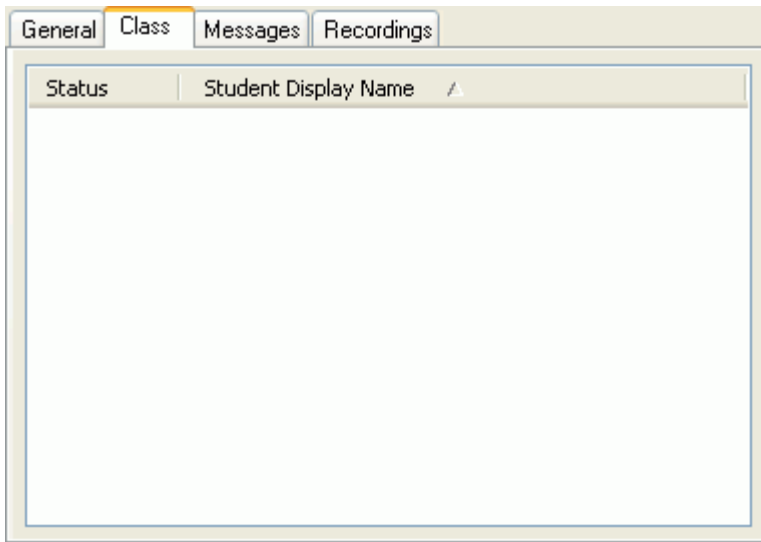
The screenshot shows a window with four tabs: 'General', 'Class', 'Messages', and 'Recordings'. The 'General' tab is active. It contains three input fields with the following values:

- Status: In my class
- Computer and Student Login Name: LLM002 LLM002
- Connection Method: Available for any Class

The 'General Tab' provides you with your present status in the system.

Status	A Student computer can have the following states: <ul style="list-style-type: none"><li>• Waiting for (My Class)</li><li>• In (My Class)</li></ul>
Login Name	The computer name and the student login name. See <a href="#">Options - Student Login</a> .
Connection Method	A Student computer can have the following ways of connecting to a class: <ul style="list-style-type: none"><li>• Connect to Class</li><li>• Browse for Classes</li><li>• Be available for any Class</li><li>• Use Class Server</li><li>• See <a href="#">Options - Class</a>.</li></ul>

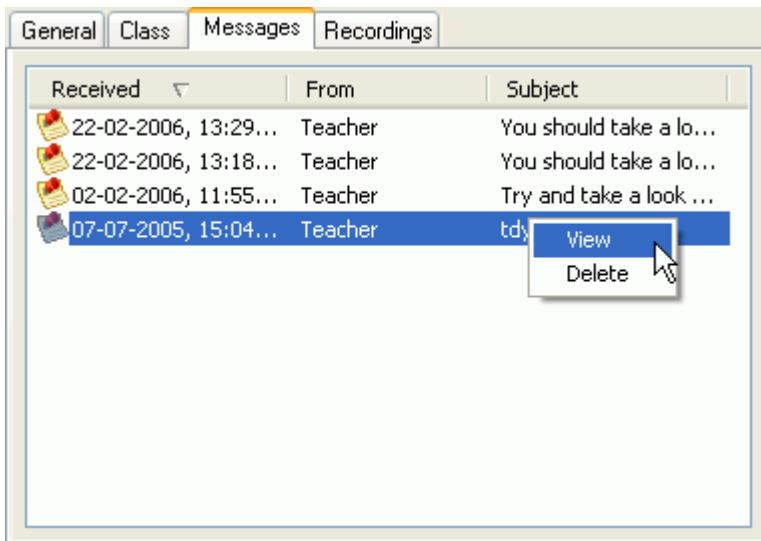
### 5.1.2 Class Tab



This window shows the students and their status in the present class.

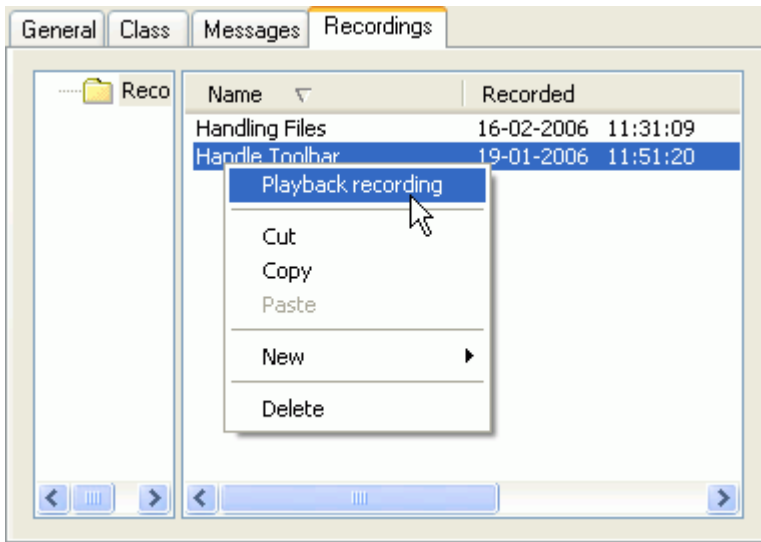
Absent students are not shown.

### 5.1.3 Messages Tab



Here you are able to browse through the messages sent to you.

### 5.1.4 Recordings Tab



Here you are able to browse through the recordings that were sent to you during the lessons you have attended.

You are also able to sort and organize the recordings.

Double click a recording to play it.

## 5.2 Student Options



See [Options - Audio Video Chat.](#)



See [Options - Help Request.](#)



See [Options - Class.](#)



See [Options - Student Login.](#)



Connection

See [Options - Connection](#).

Protection

See [Options - Protection](#).

General

See [Options - General](#).

Web Update

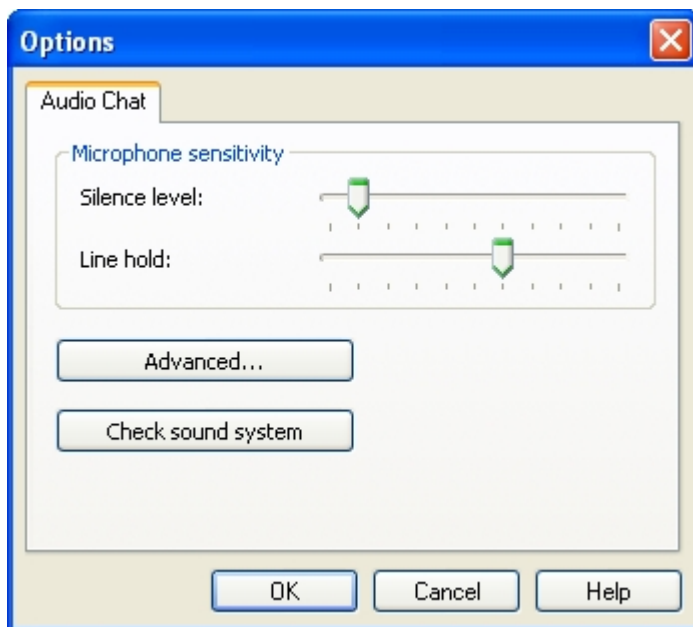
See [Options - Web Update](#).

The options can be shown as a traditional window with panes.

Follow these steps:

1. In Tools > Options > Right-click the window.
2. Select 'Options as Tabs' > Close the Options windows.
3. Re-open Options.

### 5.2.1 Options - Audio



Set microphone sensitivity and line hold.

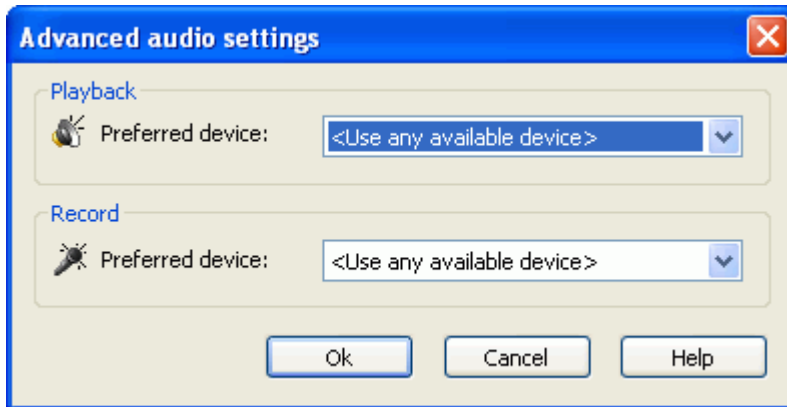
Clicking Advanced opens a list of devices that NetOp School supports.

Clicking Check Sound System performs a automated verification test.

Further reading: [Options - Advanced Audio](#).

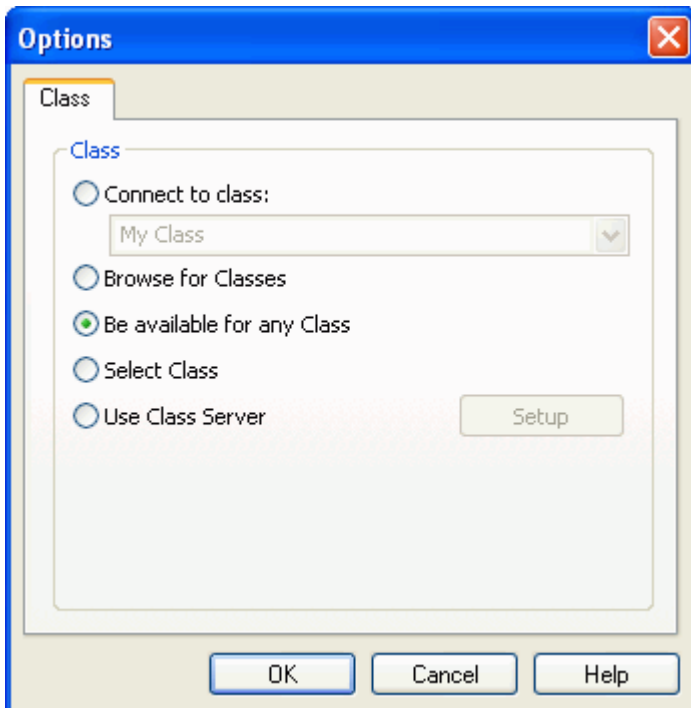


### 5.2.1.1 Options - Advanced Audio

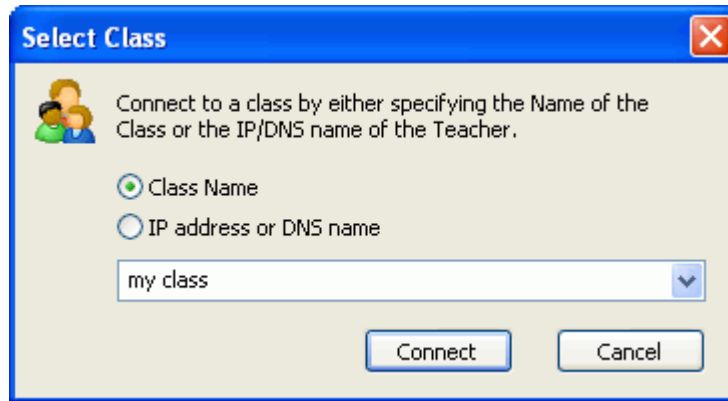


If more devices are present on your computer's system, they are listed in the drop-down lists.

### 5.2.2 Options - Class



- Connect to class**      The default selection. If more classes are available they can be found in the drop-down list.
- Browse for Classes**      Look for classes that are available - i.e. classes that are already started on the network by a teacher.
- Select Class**      Select among available classes.



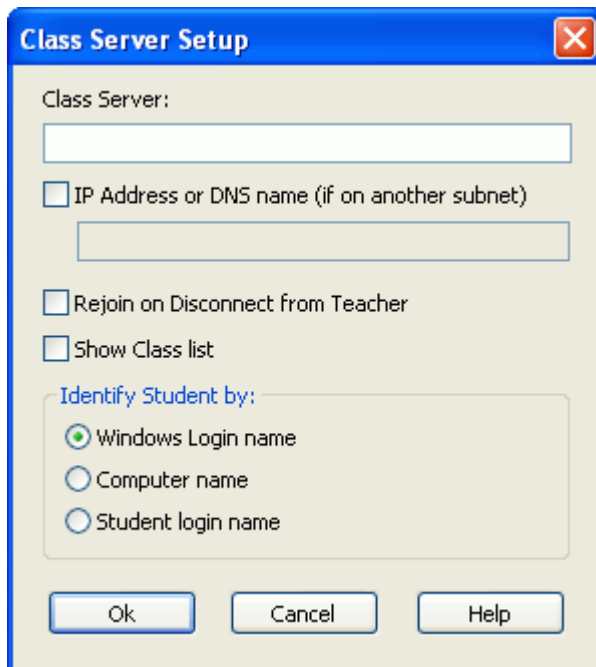
'Class Name' corresponds to 'Connect to class' - the student can select freely among available classes on the same subnet.  
 'IP address or DNS name' - the student can select freely among available classes on different subnets or on a specific Teacher computer..

- Be available for any Class Make yourself available to any teacher on the network.
- Use Class Server Let the Student request a Class Server (if available on the network) for information about current or upcoming classes.

See: [Class Server Setup - Student](#) and [Class Server Setup](#).

### 5.2.2.1 Class Server Setup - Student

Students using a computer running NetOp Student and teachers using a computer running NetOp Teacher can connect to NetOp Class Server to get their current or upcoming lesson from the class database.

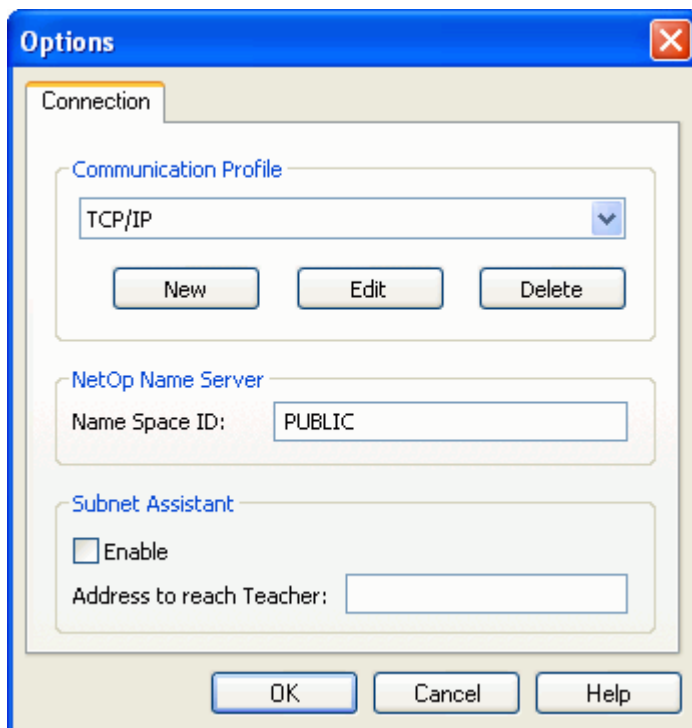


**Class Server** When joining class, the Student module will browse for and connect to the class server specified in the field.

**Note:** The Class Server ID is case sensitive.

- IP Address or DNS name If the Class Server is residing on an IP-subnet different from the Student computer, its IP address or DNS name must be entered for the student to be able to reach it
- Rejoin on Disconnect from Teacher The Student can be disconnected from the Teacher either automatically at the end of a class or unintentionally. To ensure that the Student in this situation always asks the Class Server which class to connect to, this option must be checked. In case of the present class still running, the Student will be reconnected to this.
- Show Class list The student may view the list of classes, and pick the one to connect to. Leaving it unchecked, the student will automatically be connected to the first upcoming class for that student.
- Windows Login Name Make the student identify himself to the class server by his Windows logon user name.
- Computer name Make the student identify himself to the class server by his computer name.
- Student Login Name Make the student identify himself to the class server by using the identification method which is set in [Options - Student Login](#).

### 5.2.3 Options - Connection



Communication NetOp School supports five different communication methods:

- Profile
- Internet
  - IPX
  - NetBIOS
  - TCP/IP

- Wireless

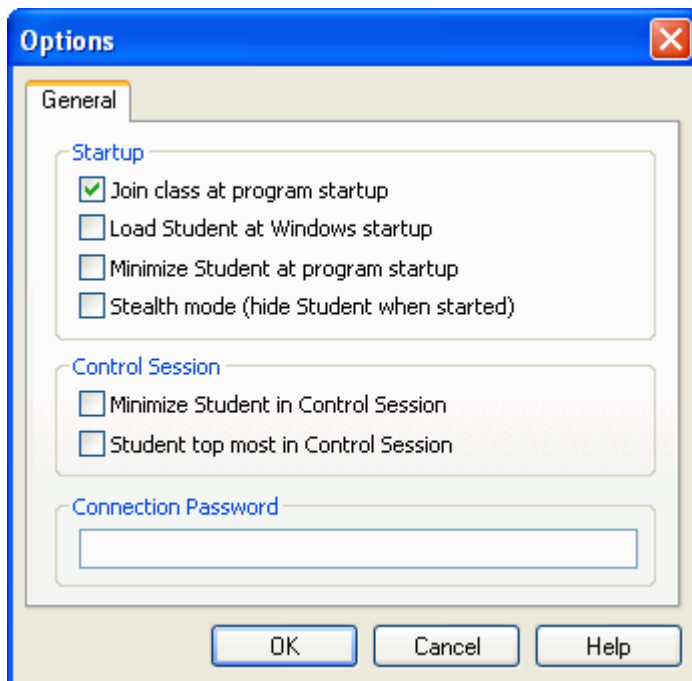
It is possible to add, edit or delete a communication profile .

NetOp Name Server      If you are using a Name Server, enter its name to verify the logged on user.

                     Subnet Assistant.  
Use this if the Teacher and the Students are not on the same subnet.

See: Advanced User's Manual, Options - Connection and Common Options - Communication Devices.

## 5.2.4 Options - General



### Startup

- If checked Student joins class at program startup.
- If checked Student loads at Windows startup.
- If checked Student is minimized at program startup.
- If checked Student runs in Stealth mode (hide Student when started).

See: [Changing Student Stealth Mode](#).

### Control Session

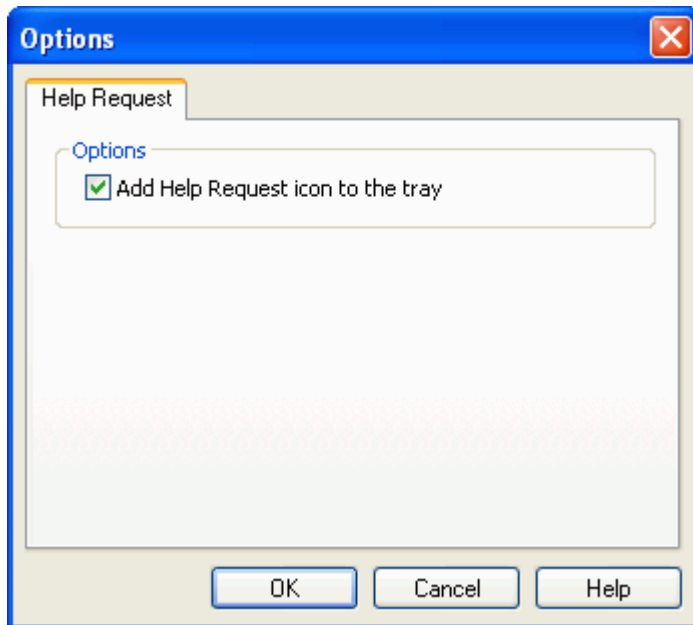
- If checked Student is minimized in Control Sessions.
- If checked Student is top most in Control Session.


### Connection Password

If a password is entered here the Teacher has to use the same password in order to

connect.

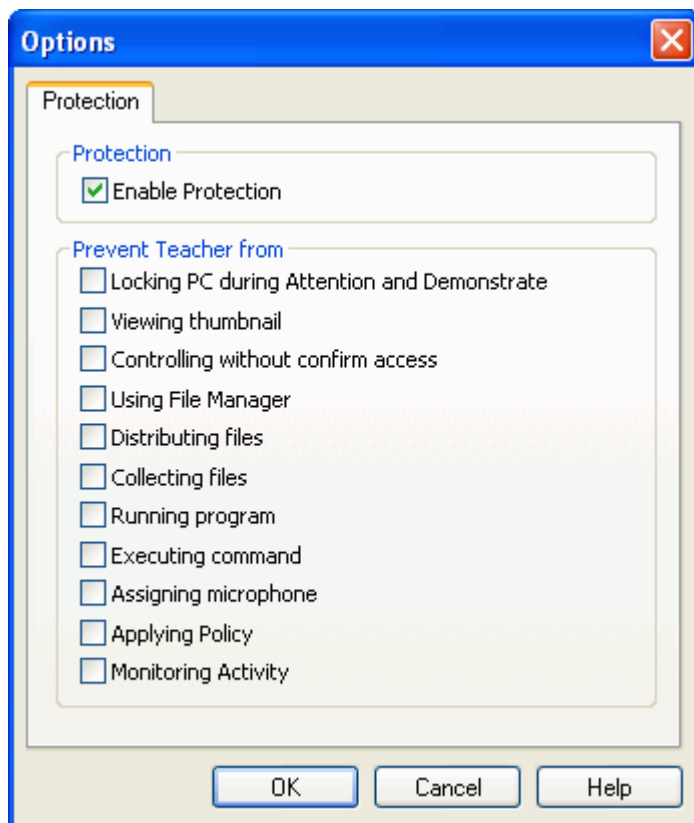
### 5.2.5 Options - Help Request



Check this to add the Help request icon to the tray. 

See: [Request Help](#).

## 5.2.6 Options - Protection



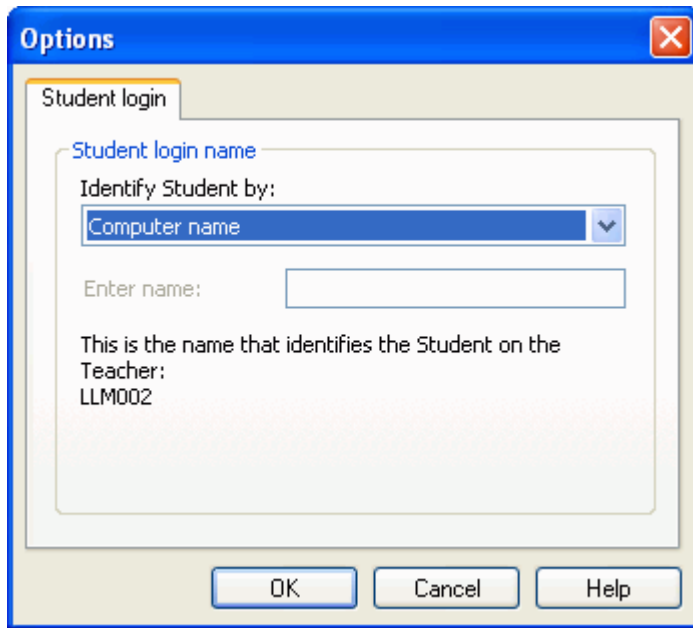
Use 'Protection options' to protect the Student computer from the Teacher's possibilities of controlling and monitoring actions on the Student computer.

Follow these steps:

1. Select Tools > Options > Protection to open the Options window.
2. Check 'Enable protection' to enable the selections.
3. Check protection items.
4. Click 'Ok'.

See: [Locked Keyboard and Mouse](#).

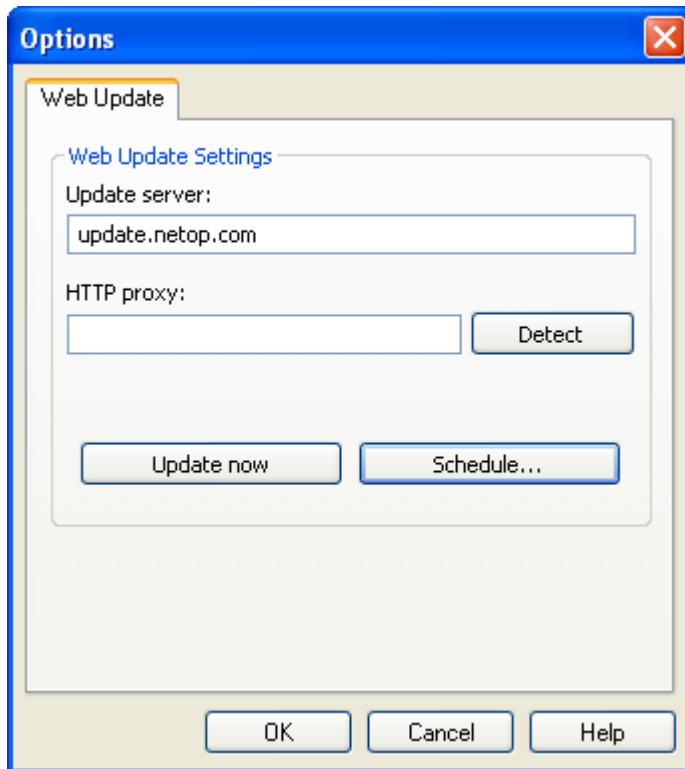
### 5.2.7 Options - Student Login



Student Identification by:	Information:	Benefits:
Windows Login name	<login name>	Especially useful if you need to identify who was logged on to a certain computer during e.g. a test.
Windows Login name and \Domain	<login name> \<Domain>	See above.
Windows full name	<Firstname><Lastname> >	See above.
Windows full name and \Domain	<Firstname><Lastname> >\<Domain>	See above.
Computer name	<Computer001>	This setup is practical if the computer-lab is used by many Students that share the computers.
Computer name and \Domain	<Computer001> \<Domain>	See above.
Prompt for login name	Actual student name	This is useful if students bring their own computers and the student names are known or if the classroom is virtual.
Login as:	E.g. environment variable ~ % USERNAME%\% SERVER%\ ~ <Name> \<Server07>	To e.g. enable easy identification of the users who are logged on via a terminal server system.

There are eight different ways for the Student to identify himself to the Teacher.

## 5.2.8 Options - Web Update



**Update server** Do not change the name of the update server.

**HTTP Proxy** Specify a HTTP proxy (format: <Server name>:<Port number>) only if required to connect to the update server. Click the Update Now button below. If one of the shown Web Update windows is displayed, specifying a HTTP proxy is not required.

**Detect** If specifying a HTTP proxy is required, click this button to make NetOp attempt to detect it and specify its server name and port number in the HTTP Proxy field. If NetOp is unable to detect a proxy, consult with your network/system administrator.

**Update now** Click this button to manually check for updates by connecting to the server specified in the Update Server field.

**Schedule...** Click this button to display the Web Update Schedule window to specify a schedule for automatically checking for updates.



In this window, you can specify a schedule of checks for updates including download and installation of available update files.

### Schedule

Select one of these options:

- Disabled: Disable automatic web update (default selection). The other sections in the window will be disabled.
- Automatic download, prompt before install: Automatically download any update files and prompt the user when downloaded.
- Automatic download and install: Automatically download and install any update files.
- Allow system restart after install: Check this box to automatically restart the computer after update installation if required (default: unchecked). Leave unchecked to deny automatic restart to after installation display a message that restart is required to complete the installation.

### Run

Select one of these options:

- At loading: Check for updates when the Guest is loaded (default selection). The Delay section in the image above will be displayed.

### Delay

Specify in this field a number to delay the web update by the specified number of minutes (default: 0, range 0-99).

- Daily: Check for updates on a daily basis. This section will be displayed:

### Start at

In the first field, specify the time of the day (default: 12:00).

In the second field, specify by a number an interval in days (default: 1, range 1-99).

- Randomize within the hour: Check this box to randomize the update time within the

hour following the specified time to avoid crowding (default: unchecked).

**Note:** If the Guest is not loaded at the scheduled time, web update will run when the Guest is first loaded thereafter.

- Weekly: Check for updates on a weekly basis. This section will be displayed:

**Start at**

In the first field, specify the time of the day (default 12:00).

In the second field, specify by a number an interval in weeks (default: 1, range 1-99).

- <Weekday>: Check boxes to run scheduled web updates on selected weekdays (default: Monday only checked).

- Randomize within the hour: Check this box to randomize the update time within the hour following the specified time to avoid crowding (default: unchecked).

**Note:** If the Guest is not loaded at the scheduled time, web update will run when the Guest is first loaded thereafter.

- Monthly: Check for updates on a monthly basis. This section will be displayed:

**Start at**

In the first field, specify the time of the day (default: 12:00).

In the second field, specify by a number the day of the month (default: 1, range 1-28).

- Randomize within the hour: Check this box to randomize the update time within the hour following the specified time to avoid crowding (default: unchecked).

**Note:** If the Guest is not loaded at the scheduled time, web update will run when the Guest is first loaded thereafter

**Start date**

Select in the drop-down boxes the schedule start date (default: today).

## 6 Student Security

NetOp School security protects the teaching environment against accidental or unauthorized destructive actions. NetOp School security does not protect other system resources, data and data transfer.

Change Protection Password...

Click this button if you want to change your protection password.

**Protection password required for**

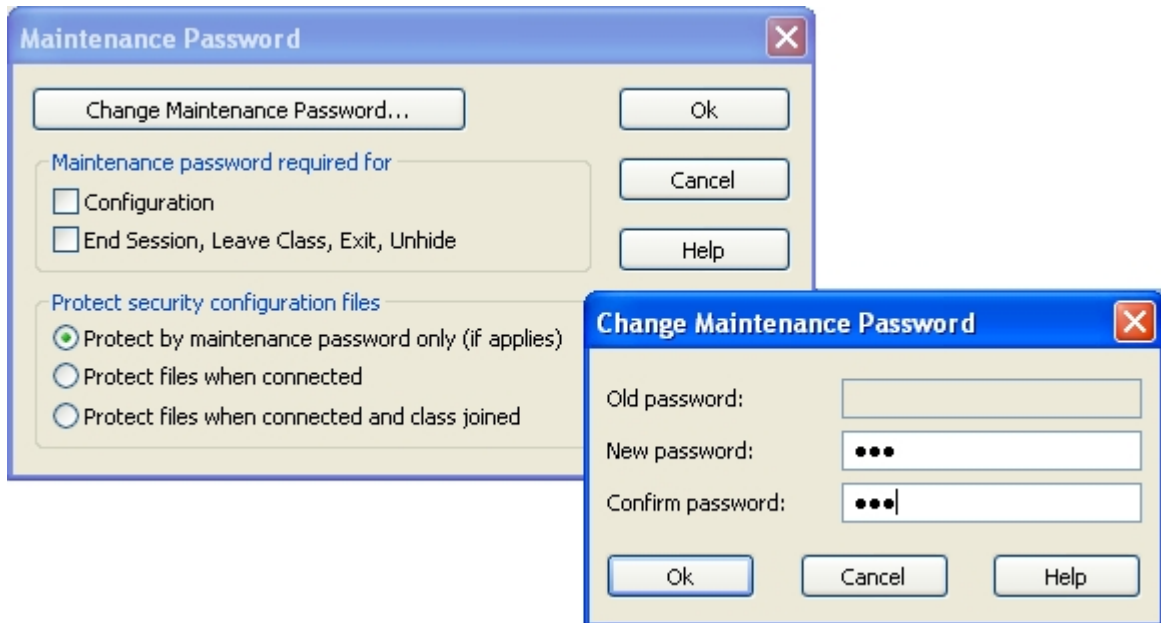
- Configuration. Selecting this prompts you to enter a password if you want to change the setup of the Student computer.
- End Session, Leave Class, Exit, Unhide. Selecting this prompts you to enter a password if you want to leave

**Protect security configuration files**

- Default selection. If selected the security configuration files are protected. This

- means that configuration files are protected if a protection password is applied. Otherwise they are unprotected.
- Select this to protect files on the Student computer while connected. This protects your files from being manipulated while remotely controlled. The student is allowed to manipulate the files.
  - Select this to protect files on the Student computer at all times during a class. This protects your files from being manipulated while remotely controlled. Neither student nor teacher are allowed to manipulate the files.

Specify a Protection Password and apply it to 'Configuration' to protect Student setup.



Apply the protection password to 'End Session', 'Leave Class', 'Exit and Unhide', protect configuration files while the Student is in class and make Students load with Windows and join class when loaded to prevent Student users from changing Student setup and disrupting the class environment.

Apply Protection to prevent Teachers from executing specified actions on Students.

Apply a Policy to deny Student access to specified applications, Internet addresses and/or certain words on webpages.

# Index

## - A -

- About 5
- Actions 17
  - Assistant Teacher Functionality 19
  - Change Stealth Mode 19
  - Demonstrate Toolbox 17
  - Locked Keyboard and Mouse 18
- Advanced Display Info 6
- Assistant Teacher Functionality 19
- Audio / Video Chat 16

## - B -

- Be available for any Class 4, 28
- Browse for Classes 4, 28

## - C -

- Change Stealth Mode 19
- Chat 15
- Class Tab 25
- Communication 12
  - Audio / Video Chat 16
  - Chat 15
  - Invitation 17
  - Message 14
  - Request Help 13
  - Teaching Actions 12
- Communication Devices 3
- Communication Info 7
- Compatibility 3
- Connect to class 4, 28
- Connection Password 31
- Control Options 31

## - D -

- Demonstrate Toolbox 17
- Destructive Actions 37
- Detect 35
- Documentation Updates 2

## - G -

- General Tab 24

## - H -

- Help Request 13
- HTTP Proxy 35

## - I -

- Internet Access 21
- Invitation 17
- IPX 3

## - L -

- Latest build 3
- Loading Student - First Time 8
- Locked Keyboard and Mouse 18

## - M -

- Message 14
- Messages Tab 25
- Microsoft Windows
  - 2000 3
  - 2003 3
  - 95 3
  - 98 3
  - ME 3
  - NT 3
  - Vista 3
  - XP 3

## - N -

- Net Address 7
- NetBIOS 3
- NetOp Marker Utility 20
- NetOp Marker Utility - Details 20

## - O -

- Operating Systems 3

Options 26  
  Advanced Audio 28  
  Audio 27  
  Class 28  
  Class Server Setup 29  
  Connection 30  
  General 31  
  Help Request 32  
  Protection 33  
  Student Login 34  
  Web Update 35

## - P -

Program Access 21  
Protection Password 37

## - R -

README.TXT 2  
Recordings Tab 26  
Request Help 13  
Restricted Test 12

## - S -

Select Class 28  
Startup Options  
  Stealth 31  
Stealth  
  Change Stealth Mode 19  
  Startup Options 19  
Student Security 37  
Student User Options 7, 10  
Student Window 22  
Student Window - Tabs 23, 24, 25, 26  
System Info 6, 7

## - T -

TCP/IP (UDP) 3  
Teaching Actions 12  
Teaching Environment  
  Be Available for Any Class 4  
  Browse for Classes 4  
  Connect to Class 4  
  Use Class Server 4

Terminal Server 3  
Test  
  Close Test 11  
  Logon 11  
  Test Result 11  
Typographical Conventions 1

## - U -

Unauthorized Actions 37  
Unrestricted Test 12  
Update Now 35  
Use Class Server 4, 28

## - W -

Web Update Schedule 35  
Wireless 3