

Vienna Ensemble

Mixing and VST/AU Host Software

Introduction

Vienna Ensemble is **automatically installed with Vienna Instruments** and lets you load multiple instances of *Vienna Instruments* and *Vienna Instruments PRO*, and it allows you to configure audio busses as well as insert and send effects for each loaded instrument. You can save your custom Projects for complete orchestral setups, making it much easier to configure your virtual orchestra.

Vienna Ensemble comes with full **64 bit support on Windows and OS X**.

System requirements:

- PC Intel Core 2 Duo/AMD Athlon 64 X2 machines with Windows 7 (32 and 64-bit versions)
- Intel Core 2 Duo with Mac OS X 10.6.8 or newer

An earlier version of Vienna Ensemble which is compatible with OS X 10.4 and PPC computers is available in the Archive of the [Vienna Instruments Software User Area](#). This older version 2 is NOT compatible with Vienna Instruments (version 5) and Vienna Instruments PRO, and also comes only with the original Vienna Instruments GUI.

The difference between Vienna Ensemble and Vienna Ensemble PRO

Vienna Ensemble is designed for local use on *one machine*, be it your Master Computer or dedicated Vienna Ensemble Slave Computers.

Vienna Ensemble PRO incorporates the first all-in-one MIDI and audio LAN solution that works universally on Macs and PCs and lets you incorporate third-party plug-ins. To integrate your Slave Computer in your network, all you need is a working *Gigabit connection*. No soundcard or MIDI Interface is needed on your Vienna Ensemble PRO Slave Computer!

The transition from Vienna Ensemble to Vienna Ensemble PRO is very smooth. You can order a **free Demo License of Vienna Ensemble PRO** to find out more from www.vsl.co.at.

OVERVIEW: Main advantages of Vienna Ensemble PRO over Vienna Ensemble:

- **Preserve** keeps your samples loaded while switching between different sequencer projects
- **MIDI and Audio is sent over LAN**, no additional interfaces necessary
- You can **integrate RAM hungry 3rd party plug-ins** like Kontakt, Spectrasonics Omnisphere or East West's PLAY and benefit from the **Preserve** feature, even on multiple computers!
- **EPIC ORCHESTRA**: Vienna Ensemble PRO comes with a hand-picked selection of instruments and articulations from our famous **Vienna Instruments Collections**.
- **Total Integration of MIR PRO and MIR PRO 24!**

Video Tutorials and Manuals

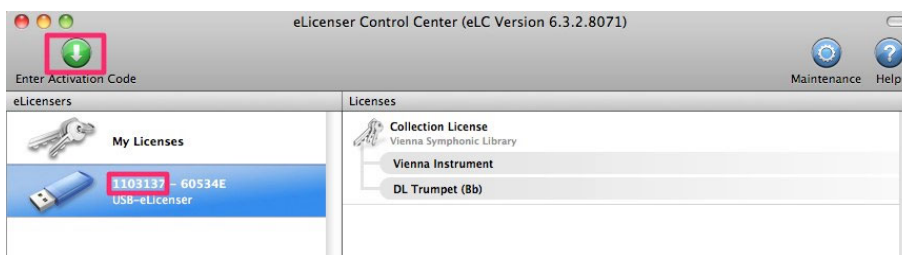
Please check out the dedicated **Vienna Instruments / Vienna Instruments PRO Manuals** and our **Video Tutorials** for additional software like Vienna Suite in your [User Area](#).

eLicenser Control Center

The *eLicenser Control Center* manages your licenses. Please make sure that you are using the latest version, available at www.elicenser.net.

Remember that you need a **ViennaKey** (or a Steinberg or Arturia eLicenser, formerly Syncrosoft) to store your licenses on. You should **register your key** with us, so that you are safe in case of damage (the first 6 or 7 digits of the key are important, as shown on the screenshot below).

Downloading your license is simple: Make sure your *ViennaKey* is inserted, launch *eLicenser Control Center*, click on **Enter Activation Code** and paste your Activation Code into the respective field. You will be guided through the rest of the procedure. An Internet connection has to be available for this process. You can of course download your license on any Internet computer, in case your music computer is not connected to the Internet.



If your license download was interrupted for any reason, please click **Maintenance** (in the upper right corner) – this will complete your license download automatically!

Remember that you will need the sample content and the licenses of the given **Vienna Instruments** Collections as well as the [latest Vienna Instruments software](#) installed alongside with a *ViennaKey* on your computers!

Contents

Introduction	1
Video Tutorials and Manuals	2
eLicenser Control Center	2
Contents	3
Setup	4
Quick Start	4
Vienna Ensemble Service / Preferences	5
Audio Engine Settings	5
Connection Settings	6
Vienna Ensemble Service Interface	6
Latency Settings	7
Vienna Ensemble Overview	8
64-bit and 32-bit support	8
Switching between 32-bit and 64-bit	8
Backward compatibility	8
Migrating to Vienna Ensemble PRO	9
File Formats and information display	10
Navigation	11
Channel Overview	13
MIDI Ports	13
Plug-in effects	14
Power panning	15
Outputs	15
Vienna Ensemble Stand-Alone	16
Preferences	16
Shortcuts and Special Features	17
Shortcut List for Windows	17
Shortcut List for OS X	17
Special Features Channel Pane	18
Special Features Mixer	18
Vienna Instruments (PRO)	19
Vienna Ensemble Routing	20
Logic	20
Digital Performer	23
Pro Tools	27
Cubase	31
Glossary	33
Support, Questions, Videos, Forum	34

Setup

1 Computer Setup: Of course this is the easiest way to use *Vienna Ensemble*. Simply install *Vienna Instruments*, make sure your **ViennaKey** with your license(s) is connected and instantiate Vienna Ensemble as a VST/VST3/AU/RTAS plug-in in your sequencer - done!

4

Using Slave machines (with Vienna Ensemble Stand-alone):

Each computer that runs **Vienna Ensemble** needs to have a **ViennaKey** containing the licenses for the given **Vienna Instruments Collections** connected. Don't forget that you will also need the content of your **Vienna Instruments Collections** available and assigned in your **Directory Manager** (simply drag and drop the sample content folders into the Directory Manager!)

TIP: If you'd like to send your MIDI and audio signals over LAN, check out *Vienna Ensemble PRO!*

Quick Start

Make sure that a **ViennaKey** with a Vienna Instruments Collection license is connected to your computer and that your sample content is installed and correctly assigned in the Directory Manager!

Then, if you'd like to use *Vienna Ensemble* **as a plug-in with your sequencer:**

- 1) In your sequencer, insert **Vienna Ensemble** as a VST/VST3/AU/RTAS instrument.
- 2) The **Server Interface** and the **Vienna Ensemble Service** will open and you will automatically be connected with Vienna Ensemble. The preferences of your sequencer will apply.

Used as **stand-alone application** (most probably on a slave computer):

- 1) Start **Vienna Ensemble** or **Vienna Ensemble (64 bit)**.
- 2) Set your preferences to work with your setup in the **Vienna Ensemble Preferences** (see below).

Vienna Ensemble Service / Preferences

The **Vienna Ensemble Service** is a separate application that runs in the background alongside your sequencer. It is started automatically when you insert Vienna Ensemble as a plug-in in your sequencer. You can shut down all running instances of *Vienna Ensemble* with EXIT.

The **Preferences** of the Vienna Ensemble Service give you the following options:



5

On Windows, you can also adjust the **VST Settings** (VST Plug-In Folder).

Audio Engine Settings

You may change the number of used threads in the **Multiprocessing** dropdown menu in real-time, and each *Vienna Ensemble* instance will use the specified number of process threads. So 1 instance on an 8 core computer should use 8 threads, 2 instances should use 4 threads, and so forth. Ideally you should have as few threads as possible. If you're also running your host sequencer on the same system as the running instances, it might be wise to reserve a core for it.

To keep it simple, set the amount of threads to your amount of cores. If you run into performance issues, lower the amount of threads.

After changing these settings, the next instantiation of the Server Interface plug-in will use the new settings.

A note on Multiprocessing

There are some general guidelines to follow when using **Vienna Ensemble** on a system with multiple cores. The general rule to follow is that the optimal number of threads on a system should be equal to the number of virtual cores present.

Vienna Ensemble, like most other hosts today, offers multi-threading. This means that it runs instruments and plug-ins in parallel using several different threads, which allows to utilize several cores on the system. **Vienna Ensemble Service** will generally perform best when running as *few instances as possible*. With the VST3 or RTAS plugin, this is possible to achieve by increasing the number of midi ports per instance (see below). Using the AU or VST2 plugins, you might be required to run several instances to work around the 16-MIDI-channel limitation of these standards.

If you are running a sequencer on the same machine as *Vienna Ensemble*, you could lower the number of threads for *Vienna Ensemble*, to represent the estimated load of *Vienna Ensemble* versus the load of your sequencer. In a system with 8 virtual cores and an estimated even load between sequencer and *Vienna Ensemble*, a good starting point would be to set *Vienna Ensemble* to 4 threads (if running a single instance). When running more than one instance of *Vienna Ensemble*, the number of threads per instance should be lowered accordingly.

Connection Settings

You can change the number of used **Audio ports** per instance here, and you can alter the number of **MIDI ports** for VST3 and RTAS plug-ins. If you are working with **Audio Units plug-ins**, please bear in mind that you have only 1 MIDI port available for each instance of a plug-in, by design.

After changing these settings, the next instantiation of the **Vienna Ensemble Server Interface** plug-in will use the changed settings.

6

Vienna Ensemble Service Interface

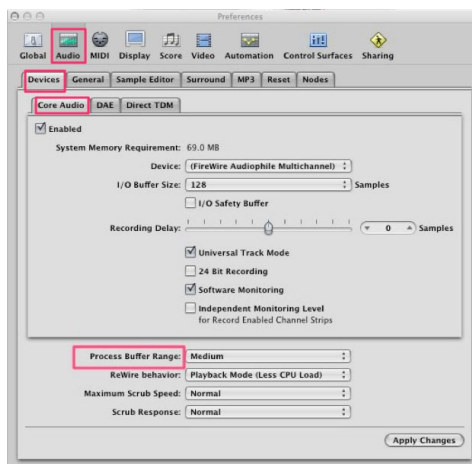
Vienna Ensemble PRO Service Interface is a plug-in that communicates with the **Vienna Ensemble Service** on your Master Computer. Instantiating *Vienna Ensemble* as a plug-in in your sequencer automatically opens the **Vienna Ensemble Service Interface** and the **Vienna Ensemble GUI** (Graphical User Interface):



Each **Service Interface** can connect to 1 **instance** of *Vienna Ensemble*, and of course you can use multiple Service Interfaces and *Vienna Ensemble* instances!

Attention LOGIC users:

To guarantee optimum performance of Vienna Ensemble it is essential to set the **Process Buffer Size** under “Preferences/Audio/Devices/Core Audio” to **MEDIUM**.



Latency Settings

In the **Vienna Ensemble Service Interface** you will also find the **Latency** settings. This value **ONLY** affects the latency added over network when you are playing live.

The Vienna Ensemble Service Interface plug-in automatically compensates the latency in playback – even if you have set the Latency to different settings for different instances of Vienna Ensemble.

7

We have applied dynamic latency compensation to *Vienna Ensemble*. This means that your sequencer will automatically adapt to the chosen buffer settings of your *Vienna Ensemble* Service Interface plug-in.

ATTENTION: RTAS does not support real-time dynamic latency compensation at the moment; the plug-in has to be reloaded for changes to become effective. Disabling Delay Compensation and enabling it again is also known to work.



- Setting the **Latency** to **“none”** will synchronize *Vienna Ensemble* with your soundcard, so that no latency is added – while very good for recording percussive sounds, this also adds a lot of strain to the CPU.
- Setting the **Latency** to **“1 buffer”** will add one buffer to your soundcard latency. If your soundcard latency is, e.g., 256 Samples, your latency when playing live will be 512 samples.
- Setting the **Latency** to **“2 buffers”** will add 2 buffers to your soundcard latency. If your soundcard latency is, e.g., 256 Samples, your latency when playing live will be 768 samples.

Generally speaking: The faster your CPU and the better your soundcard, the more you can expect from your system!

We suggest using a low latency in your soundcard and keeping the latency setting at “2 buffers”.

Vienna Ensemble Overview

64-bit and 32-bit support

8

Vienna Ensemble supports hosting of 32-bit VSTi/AU effect plug-ins in a 32-bit Service and hosting of 64-bit VSTi/AU effect plug-ins in a 64-bit Service.

You may run *Vienna Ensemble* 32-bit and 64-bit instances (as a stand-alone or as a plug-in) side by side. This way you can host old "legacy" 32-bit effect plug-ins in a 32-bit *Vienna Ensemble*, while hosting *Vienna Instruments*, *Vienna Instruments PRO*, *Vienna Imperial*, *Vienna Suite*, as well as any other 64-bit capable VST/AU effects in your 64-bit *Vienna Ensemble*.

When *Vienna Ensemble* plug-ins are loaded with a master host project, they will always connect to the *Vienna Ensemble Service* with the architecture (32-bit/64-bit) they were connected to when the master host project was saved.

The most obvious advantage of 64-bit plug-ins when it comes to RAM-intensive applications is of course that you can utilize as much RAM as available in your 64-bit OS.

Switching between 32-bit and 64-bit

Vienna Ensemble, used as a plug-in, will always prefer 64-bit unless a 32-bit **Vienna Ensemble Service** is already running before instantiating *Vienna Ensemble* as a plug-in (you can start this Service from your programs/applications folder).

To switch from a 32-bit to a 64-bit Service for a whole master host project, simply load the master host project, then quit the 32-bit Service (a warning message will pop up). Then start the *Vienna Ensemble Service* (64-bit) from your programs/applications folder and click "Reconnect" on all *Vienna Ensemble Service Interfaces*.

This also works the other way around (64-bit to 32-bit). It is recommended to save *Vienna Ensemble* projects (viframes) of each *Vienna Ensemble* instance, as some 3rd party effect plug-ins only come as 32-bit plug-ins.

Backward compatibility

If you open a song that contains instances of older **Vienna Ensemble** versions, connecting to the new **Vienna Ensemble** Service Interface will open *Vienna Ensemble* with your former *Vienna Ensemble* Projects. **OS X:** Since older versions of *Vienna Ensemble* (version 2) only offered a 32 bit Service on OS X, old master host projects with *Vienna Ensemble* plug-ins will automatically connect to a new (version 4) 32-bit *Vienna Ensemble Service* (starting it if necessary).

This reliably maintains backward compatibility of 3rd party effects (which may not be available as 64-bit versions) at all times.

Migrating to Vienna Ensemble PRO

Upgrading from *Vienna Ensemble* to *Vienna Ensemble PRO* is easy!

There are 2 ways to migrate from Vienna Ensemble:

1) **Save your Vienna Ensemble projects (*.viframe files) and open them in Vienna Ensemble Pro.**

If you want to merge projects, use the “Merge Project” feature in the “File” menu. It is advised to check the assignments of outputs after merging projects.

2) **Before you upgrade, please make sure to use the latest available version of Vienna Ensemble and Vienna Ensemble PRO.** Find these updates in your [Software User Area](#).

Once you have downloaded and installed Vienna Ensemble PRO, please start the Vienna Ensemble PRO Server (32-bit and/or 64-bit), then load the master host project in your sequencer. This will connect all **Vienna Ensemble** plug-ins to the **Vienna Ensemble PRO Server(s)**, allowing you to take advantage of all Vienna Ensemble PRO features. Click Preserve on all new **Vienna Ensemble PRO** instances (name them as you like) and replace the **Vienna Ensemble Server Interface** plug-ins in your sequencer with **Vienna Ensemble PRO Server Interface plug-ins**, then connect to the preserved instances – and don’t forget to save your song, best with a new version number!

Vienna Ensemble PRO exclusive features like 3rd party virtual instruments will not be loadable in Vienna Ensemble, which is why it’s important to replace the Vienna Ensemble plug-ins with Vienna Ensemble PRO plug-ins!

In short words:

- 1) Update all VSL software
- 2) Start the *Vienna Ensemble PRO* Servers (32-bit and/or 64-bit)
- 3) Load your master host project in your sequencer
- 4) Preserve all opened Vienna Ensemble PRO instances
- 5) Replace all Vienna Ensemble Plug-ins in your sequencer with Vienna Ensemble PRO plug-ins and connect to the preserved instances.
- 6) Save your master host project in your sequencer (new version number or name).

ATTENTION: Please note that you cannot run both **Vienna Ensemble Service** and **Vienna Ensemble PRO Server** of the same architecture (32-bit/64-bit) at the same time.

For more detailed information on Vienna Ensemble PRO, please refer to the Vienna Ensemble PRO manual in your [User Area](#)!

File Formats and information display

You can save separate **Vienna Ensemble Projects** using the file menu or the icon in the task bar. The saved files are called ***.viframe32** and ***.viframe64**, depending on the architecture (32/64 bit) of the *Vienna Ensemble Service*. They contain all information saved in a single *Vienna Ensemble* instance!



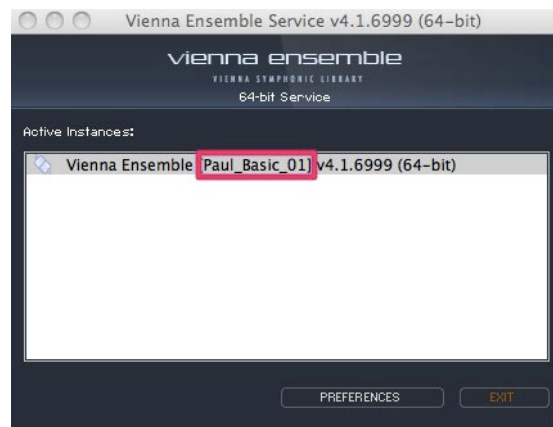
10

When loading a *.viframe, the file name will be displayed in [], amongst other information

1) in your **Vienna Ensemble Instance Window Title** (in this case: "Paul_Basic_01"):



2) and in the **Vienna Ensemble Service Window**



Navigation

The **Vienna Ensemble** GUI will open in the background of your master computer.

Hover with your mouse over each icon and you will see a description in the lower left corner, as well as a “mouse-over” description (with the corresponding shortcut, if available)!



11

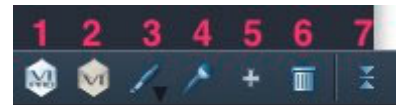
The taskbar in the upper left corner contains the following icons:

- 1) **Start/Stop Engine**
- 2) **New Project:** Create a new project from scratch
- 3) **Open Project:** Open your saved projects: *.viframe32 or *.viframe64
- 4) **Save Project:** Save your projects as *.viframe32 or *.viframe64 files
- 5) **Preferences**
- 6) The **Mixer** icon lets you toggle the mixer view.



In the lower left corner, you can

- 1) add **Vienna Instruments PRO**
- 2) add **Vienna Instruments**
- 3) add **Vienna Imperial instances** (available as AU/VST plug-in)
- 4) add **audio input channels**
- 5) add **busses**.
- 6) **delete selected channels**
- 7) toggle the **narrow channel strip view** on and off for the left channel pane.

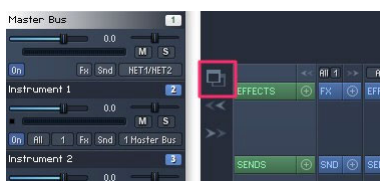


Bus channels are green, **Vienna Instruments** channels are blue, VSTi/AU **Vienna Imperial** channels are brown(ish) and **Audio Input Channels** are purple.

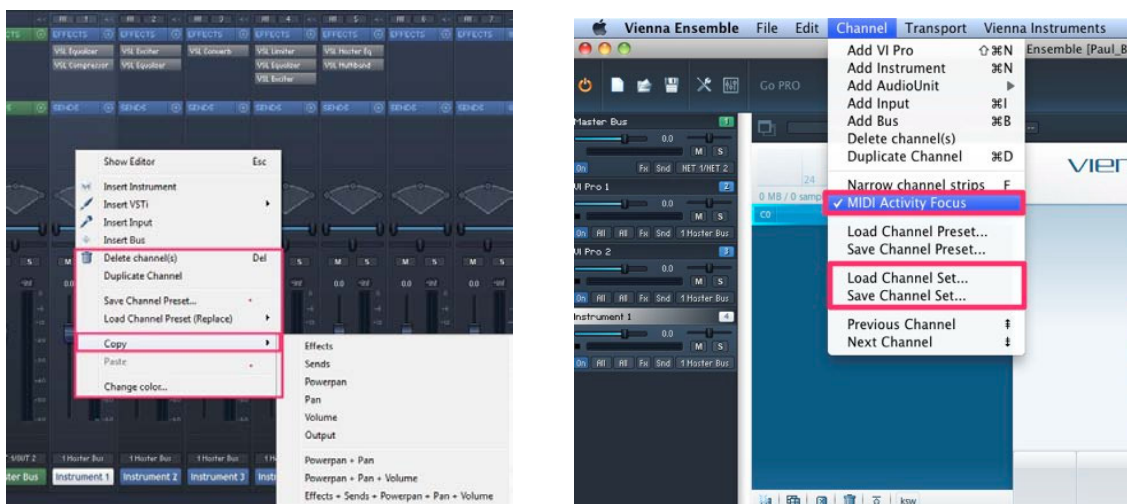
Move channels in the Channel Pane according to your preferences. You can **collapse single channels** (in the mixer) and expand and collapse all channels with the arrow icons to the left side of the mixer page:



It is possible to **detach the mixer** and the interfaces of your virtual instruments and use it in a separate window (or on a second screen).



You have the option to **duplicate channels**, **copy specific channel settings**, or **save and load Channel presets** (all settings and loaded samples on a given channel). You can also **define the color of selected channels**. To do so, right-click (OS X: Ctrl-Click) the channel you want to manipulate, then choose from the menu:



All channel options can also be found in the menu bar. Additionally, you can save/load **Channel Sets**.

Channel Sets consist of multiple channels. Great to save your favourite orchestral groups!

MIDI Activity Focus will automatically switch to the channel that has been solo'd in your sequencer, or the only channel that is receiving MIDI signals at any given time. This convenient feature works with 1 MIDI Channel only, by design.

Channel Overview

MIDI Ports

Each **Vienna Ensemble** instance offers up to 32 MIDI ports with 16 MIDI channels each (= 512 MIDI channels) and a virtually unlimited number of audio ports. You can set the number of ports in the **Service Preferences** of each instance.

13

The channel selector also allows you to choose **Omni** to receive on all 16 channels, or **none** to temporarily disable MIDI input on that port. If you're running *Vienna Ensemble* as a plug-in, a dedicated Plug-in MIDI In port will be offered for every Instrument. Used as a VST 3/RTAS plugin, up to 32 ports are available within Cubase, Nuendo and Pro Tools.

You can also select **external MIDI Inputs** when using *Vienna Ensemble* as a plug-in.



You can now assign **2 key ranges** for each virtual instrument, which allows you to create, e.g. full string sections with your desired articulations (even Performance Legatos) – simply assign the same MIDI Channel to all of them and “stack” their keyboard ranges. E.g., you could let the double basses play from B0 to B1, cellos from C2 to B2, violas from C3 to B3, and the violins from C4 to their highest note – just try out what you can do and what makes sense ... You can also let the ranges overlap.

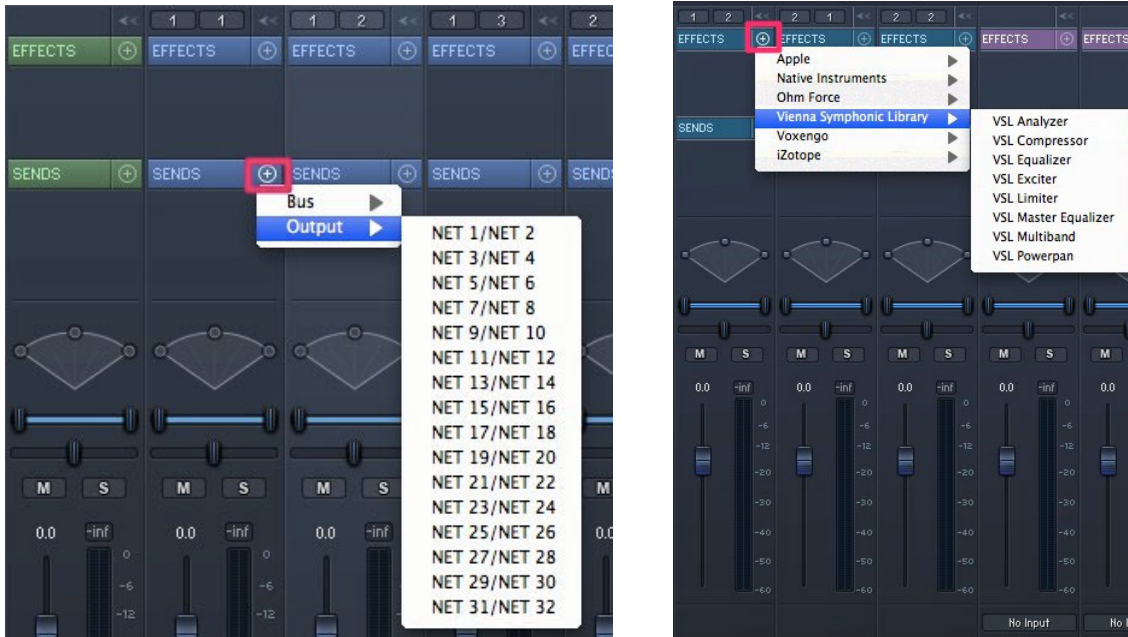
TIP: Define the second key range for all layered instruments in the same keyboard area. Then set the key-switches for all instruments to the same key-switches within this second key range. This way you can use the same key-switches to switch between articulations for all layered instruments.

MIDI Port and **MIDI channel** of each instrument channel are displayed on top of each channel in the mixer and on the Channel Pane. You can also change the settings here.



Plug-in effects

You can assign FX plug-ins to every channel, and you have flexible routing possibilities with assignable Sends. Simply click on the “+” Sign of **Sends** and **Effects** in the mixer.



14

Both **Effects** and **Sends** can be inserted and adjusted in the channel pane as well as in the mixer view. The only thing you need is all those delicious effects ...



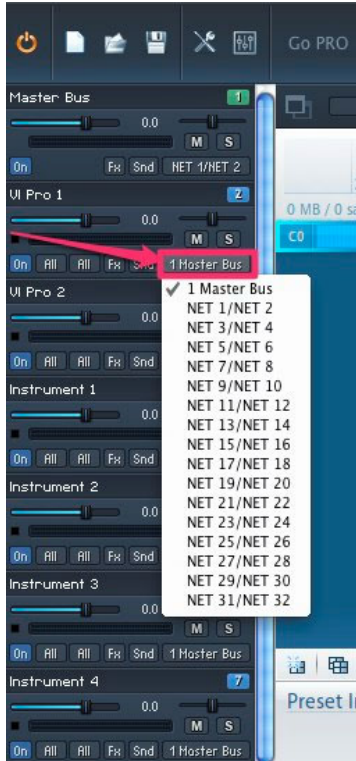
Power panning

Vienna Ensemble offers two different pan modes: Normal balance, where the volume of the “weaker” channel is lowered correspondingly, and power panning, where you don’t lose any stereo information but can narrow or even collapse a channel’s stereo signal as desired by dragging the left and right handles. Clicking in the space between the handles or dragging the center dot in the graphic view allows you to move the channel’s stereo center.



Outputs

The output assignment offers flexible routing possibilities including all busses – you can assign each channel either to a bus or a hardware output, so that you can set up your mixing console to fit your needs; e.g., you could assign all string instruments to Bus #1, all drums to Bus #2, etc. Of course, changes made in a bus will affect all channels attached to it.



Each channel has **Mute** and **Solo** buttons as you know them from your sequencer.

Vienna Ensemble Stand-Alone

Vienna Ensemble can also be used as a stand-alone software. To launch Vienna Ensemble PRO as a stand-alone software, double-click **Vienna Ensemble** or **Vienna Ensemble (64-bit)** from your programs/applications.

16

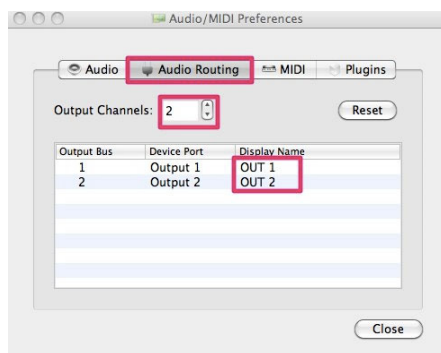
Preferences

Click on the **Preferences** icon in the task bar to configure your stand-alone setup. The first start will automatically open the Preferences.



The **Preferences** for your stand-alone Vienna Ensemble differ quite a bit from the Preferences described in the **Vienna Ensemble Service Preferences** described earlier, as you have different options here.

The **Audio and MIDI Routing** can be configured, you can add and deactivate outputs/inputs and assign names for a better overview. The **activated inputs of your soundcard** will also be available in the **Input Channels** within Vienna Ensemble.



WIN only: Select active channels of an audio device to improve communication with other audio applications. Audio channels of the same audio device can be used by another audio application when deactivated in the **Vienna Ensemble** Preferences.

MIDI: Select your MIDI Input Devices for this Vienna Ensemble PRO stand-alone instance.

Plug-ins: In **OS X**, all installed AU plug-ins are displayed here. In **Windows**, make sure that you have assigned the correct **VST plug-in path**, so that Vienna Ensemble can find all your plug-ins!

Shortcuts and Special Features

Shortcut List for Windows

- [CTRL+R] Start/Stop Engine
- [CTRL+O] Open Project
- [CTRL+S] Save Project
- [CTRL+Alt+S] Save Project as...
- [CTRL+P] Preferences – does not work in server mode
- [ESC] Toggle Mixer View
- [CTRL+Q] Quit
- [CTRL+Z] Undo – supported actions: strip deletion, mixer folding and more
- [CTRL+Y] Redo – supported actions: strip deletion, mixer folding and more
- [CTRL+N] Add Instrument
- [CTRL+I] Add Input channel
- [CTRL+B] Add Bus
- [CTRL+D] Duplicate Channel
- [Del] Delete channel(s)
- [F] Fold channel strips (Channel Pane)
- [PgUp] Previous Channel
- [PgDn] Next Channel

Shortcut List for OS X

- [Command+R] Start/Stop Engine
- [Command+O] Open Project
- [Command+S] Save Project
- [Command+Alt+S] Save Project as
- [Command+P] Preferences – does not work in server mode
- [ESC] Toggle Mixer View
- [Command+Q] Quit
- [Command+Z] Undo – supported actions: strip deletion, mixer folding and more
- [Command+Y] Redo - supported actions: strip deletion, mixer folding and more
- [Command+N] Add Instrument
- [Command+I] Add Input channel
- [Command+B] Add Bus
- [Command+D] Duplicate Channel
- [<-] Delete channel(s)
- [F] Fold channel strips (Channel Pane)
- [PgUp] Previous Channel
- [PgDn] Next Channel

Special Features Channel Pane

- Rubber-band Selection of channels
- Browsing channels with Pgup / PgDn and Arrow up / Arrow down
- Selection of multiple channels with [Shift/Ctrl+Click]
- Dragging of channels (drag on titlebar)
- Right click on a channel strip for a menu of actions
- Hold down [Alt] while selecting a MIDI channel and the MIDI channels of all selected channels will be automatically incremented.
- Select multiple instruments and hold down [Alt] while changing MIDI port or channel – this value will propagate to all selected channels
- Hold down [Shift] while selecting a MIDI Channel and all selected channels will get the same value
- When editing channel names, hold down [Alt] and press [Enter] – all following channel names will be incremented

Special Features Mixer

- [Shift]-drag any control for fine adjustment
- [Shift]-mouse-wheel any control for fine adjustment
- Selection of channels with [Shift/Ctrl]-click
- Rubber-band selection of channels
- Double-click channel name to open instrument GUI (if available)
- [Ctrl]-click on the channel strip fold button to fold all mixer-strips
- Right-click on the channel strip for a menu of actions (like in the Channel Pane)
- Select multiple channels, hold down [Alt] while adjusting volume or pan, and all selected channels will be adjusted
- Hold down [Alt] while selecting a MIDI channel and the MIDI channels of all selected channels will be automatically incremented
- Hold down [Shift] while selecting a MIDI channel and all selected MIDI channels will get the same value

Vienna Instruments (PRO)

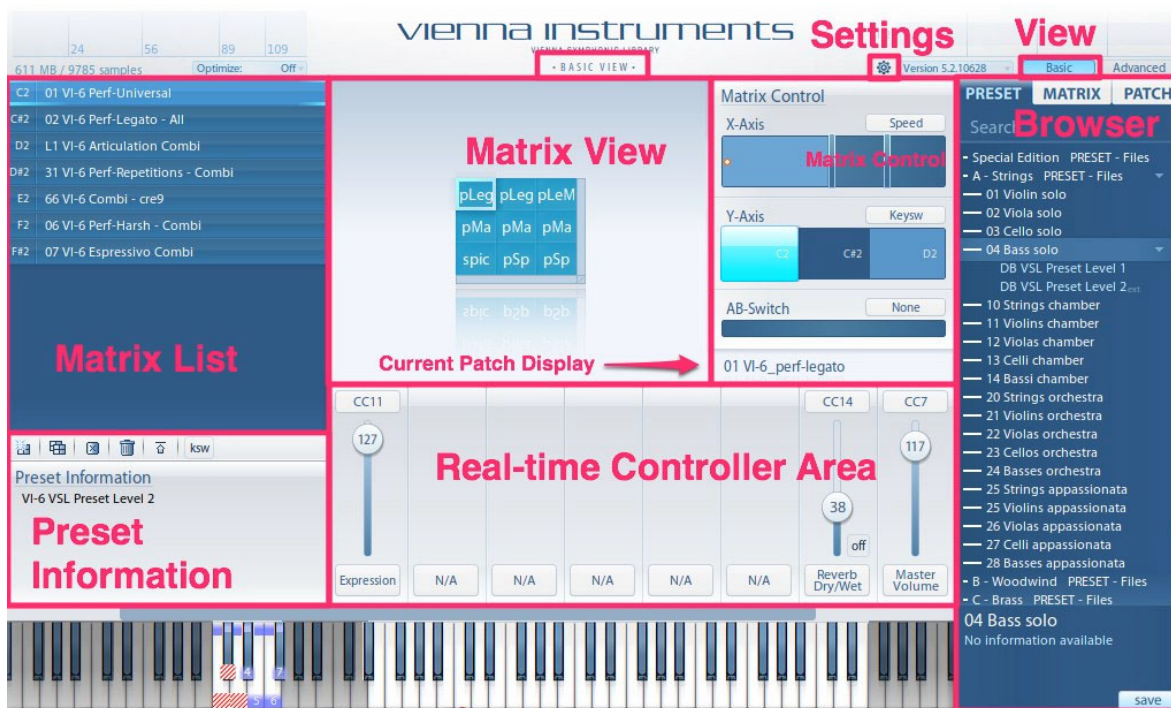
Your **Epic Orchestra** and all other Vienna Instruments Collections are powered by **Vienna Instruments**, our tailor-made sample player that is loaded with features!

19

The **Basic View** (see below) displays all parameters you need when playing live. You probably already know most elements such as the Matrix List and the Matrix Control Bars from the original *Vienna Instruments* – but now they are conveniently placed on one screen! And of course you also benefit from a highly efficient modern Streaming Engine!

We'll take a closer look at all the features shown below and of course the **Advanced View** in the *Vienna Instruments* manual!

All widgets come with **Tool Tips**, so you get instant information when you hover over each widget with your mouse.



Please refer to the **Vienna Instruments Manual** in your [USER AREA](#) to find out more about the intricacies of this powerful tool.

Additionally, we have provided [Video Tutorials](#) that will give you a quick start with simple examples that cover all the features of Vienna Instruments.

TIP: Vienna Instruments PRO provides you with even more options when it comes to manipulation of virtual instruments (integrated APP Sequencer, enveloped time-stretching, SSD-ready, which gives you a 10 times faster loading process....).

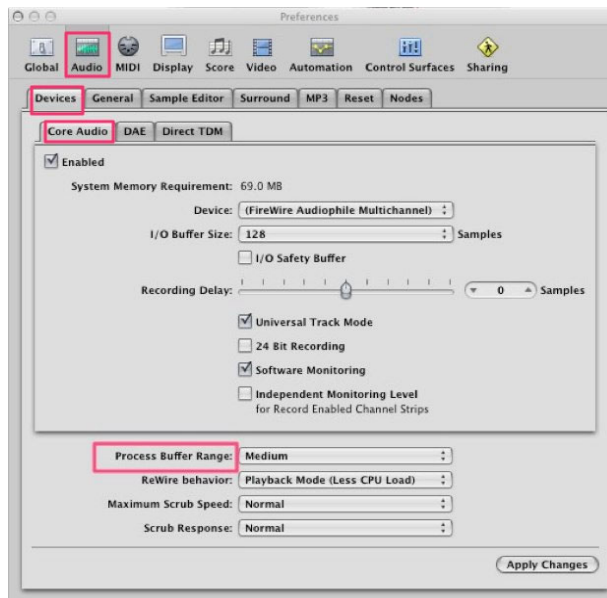
Vienna Ensemble Routing

This chapter will show you how to route multiple stereo outputs from Vienna Ensemble into your sequencer.

20

Logic

For optimum performance, it's essential to set the **Process Buffer Range** in the **Audio Preferences** of Logic to **Medium**:

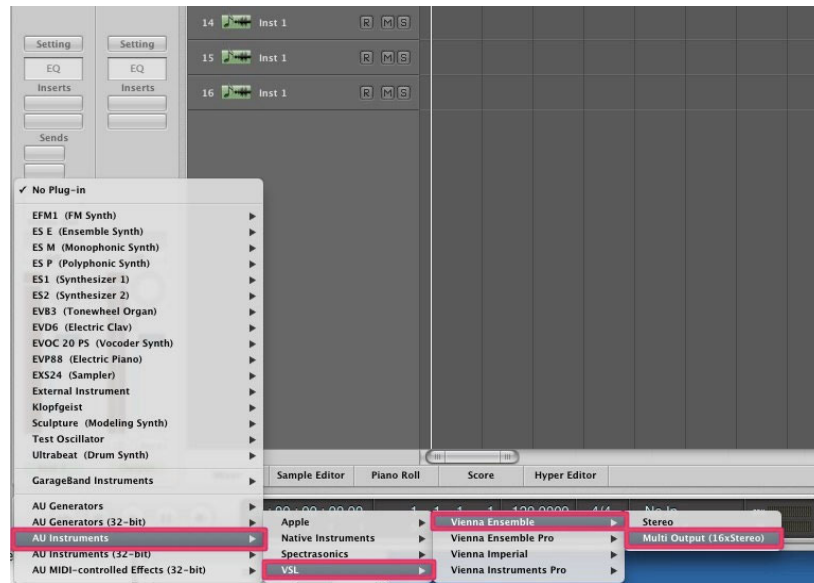


If you are using **automation**: Preferences > Audio > General > “Sample Accurate Automation” needs to be turned OFF for best results.

Then, instantiate a multi-timbral Software Instrument track:

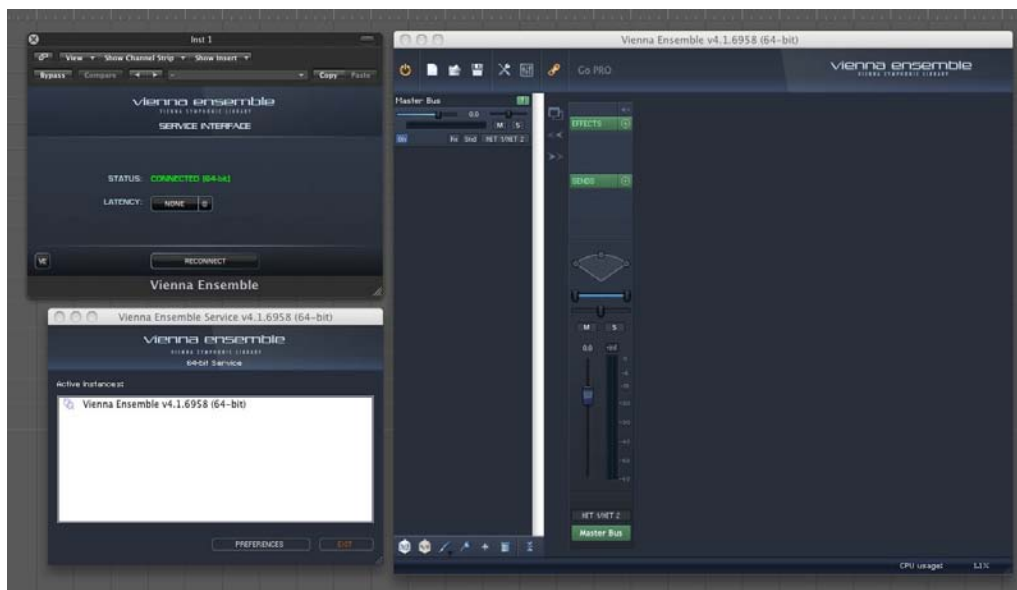


Now assign Vienna Ensemble (Multi Output).

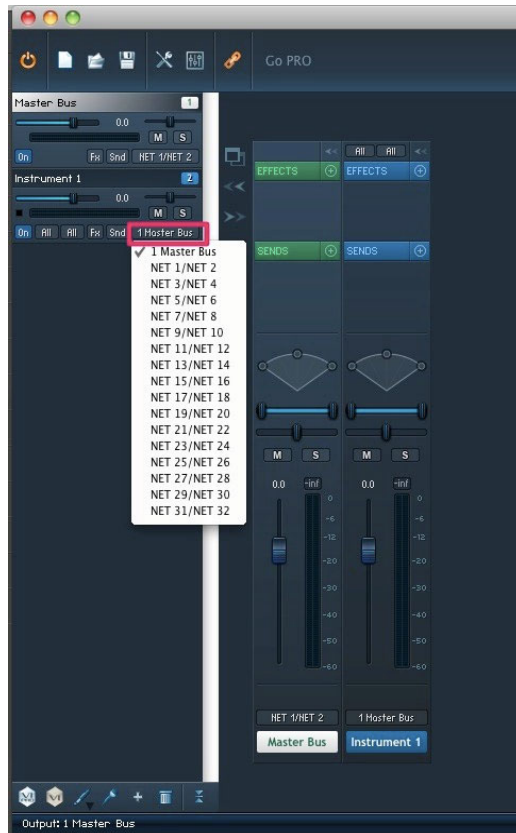


21

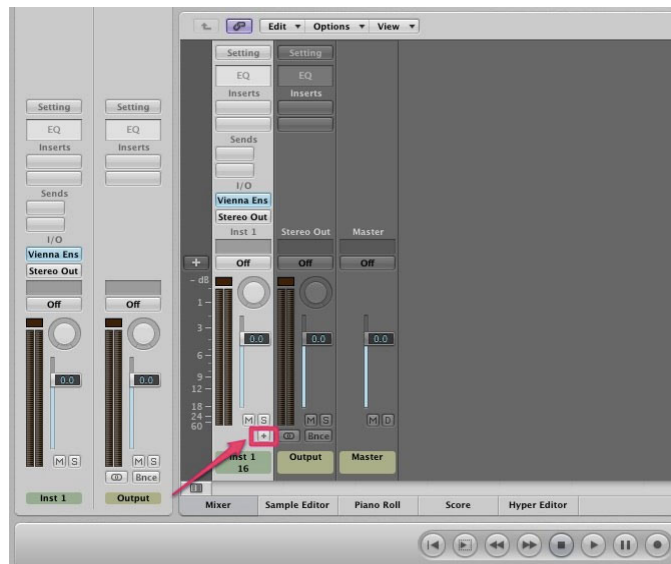
The windows you see now are the Vienna Ensemble Server Interface, the Vienna Ensemble Service and the Vienna Ensemble GUI.



Now you can assign different outputs in Vienna Ensemble. It is also possible to assign the outputs underneath the fader of each channel.



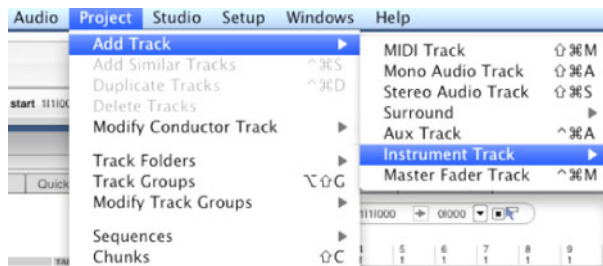
Open the Mixer page. Outputs 1–2 are automatically assigned in the Audio Instrument channel.



You can add more stereo channels in ascending order comfortably by simply clicking the “+” Button underneath the SOLO button in the Instrument channel.

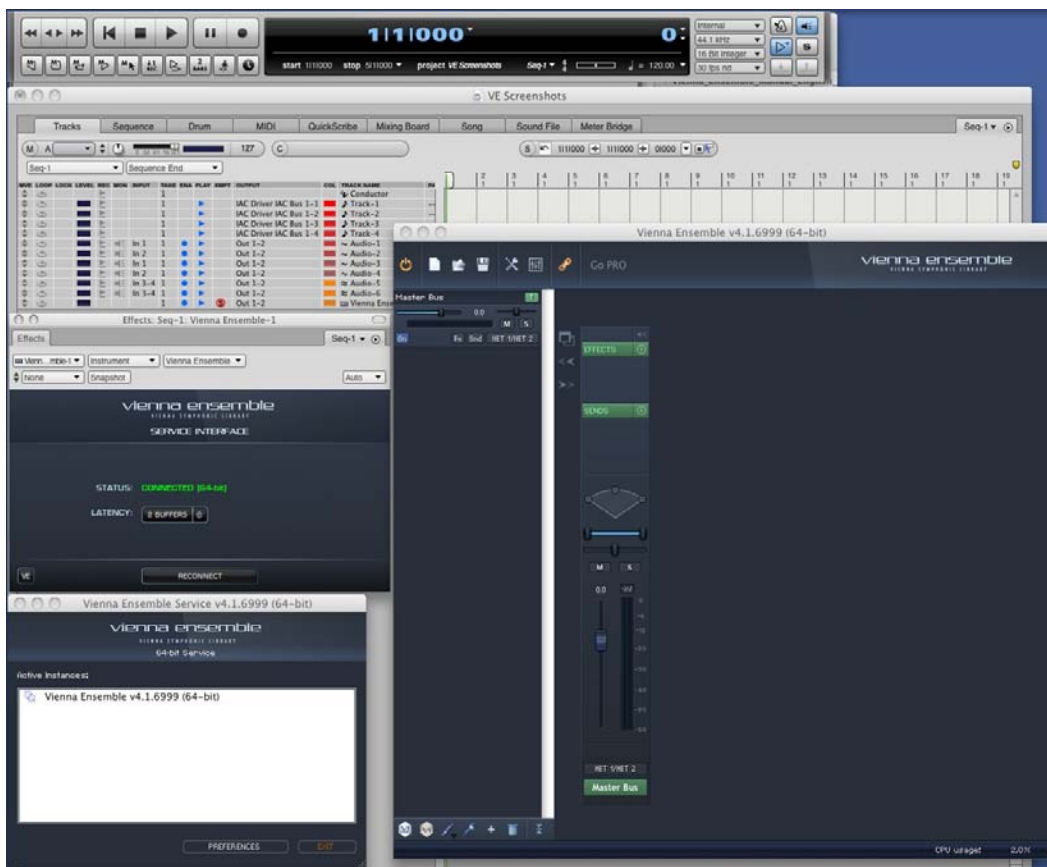
Digital Performer

Add a new instrument track and choose Vienna Ensemble:

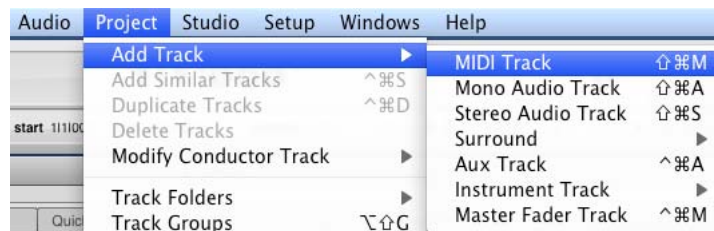


23

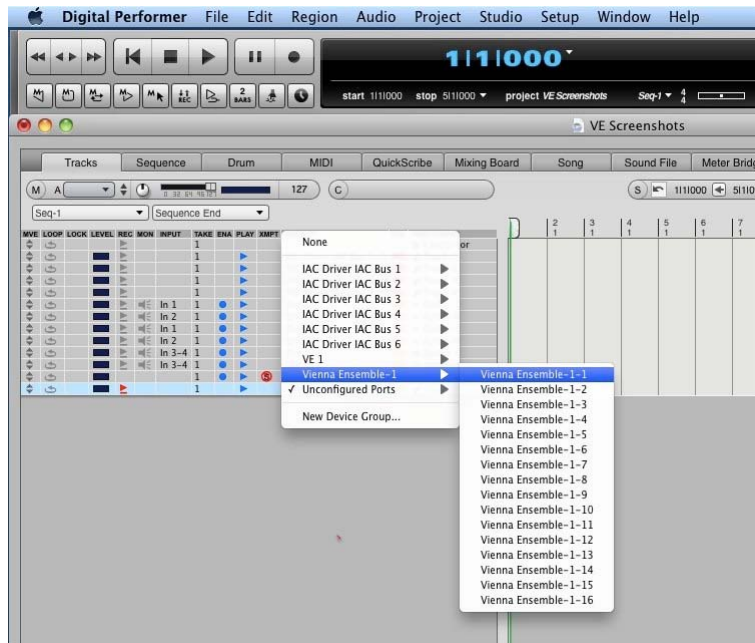
The windows you will see now are the Vienna Ensemble Service Interface, the Vienna Ensemble Service and the Vienna Ensemble GUI.



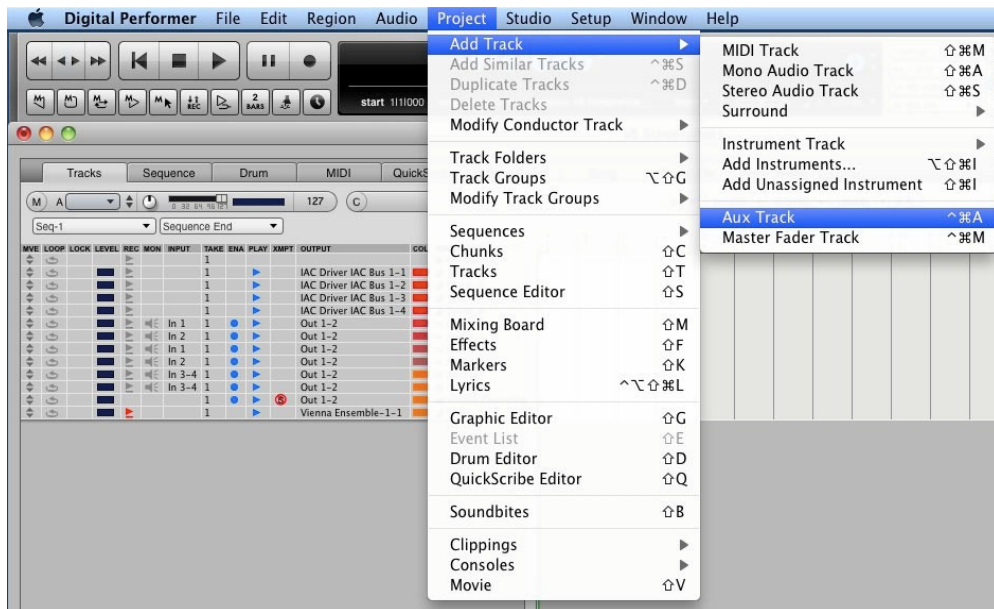
Now, add a new MIDI track.



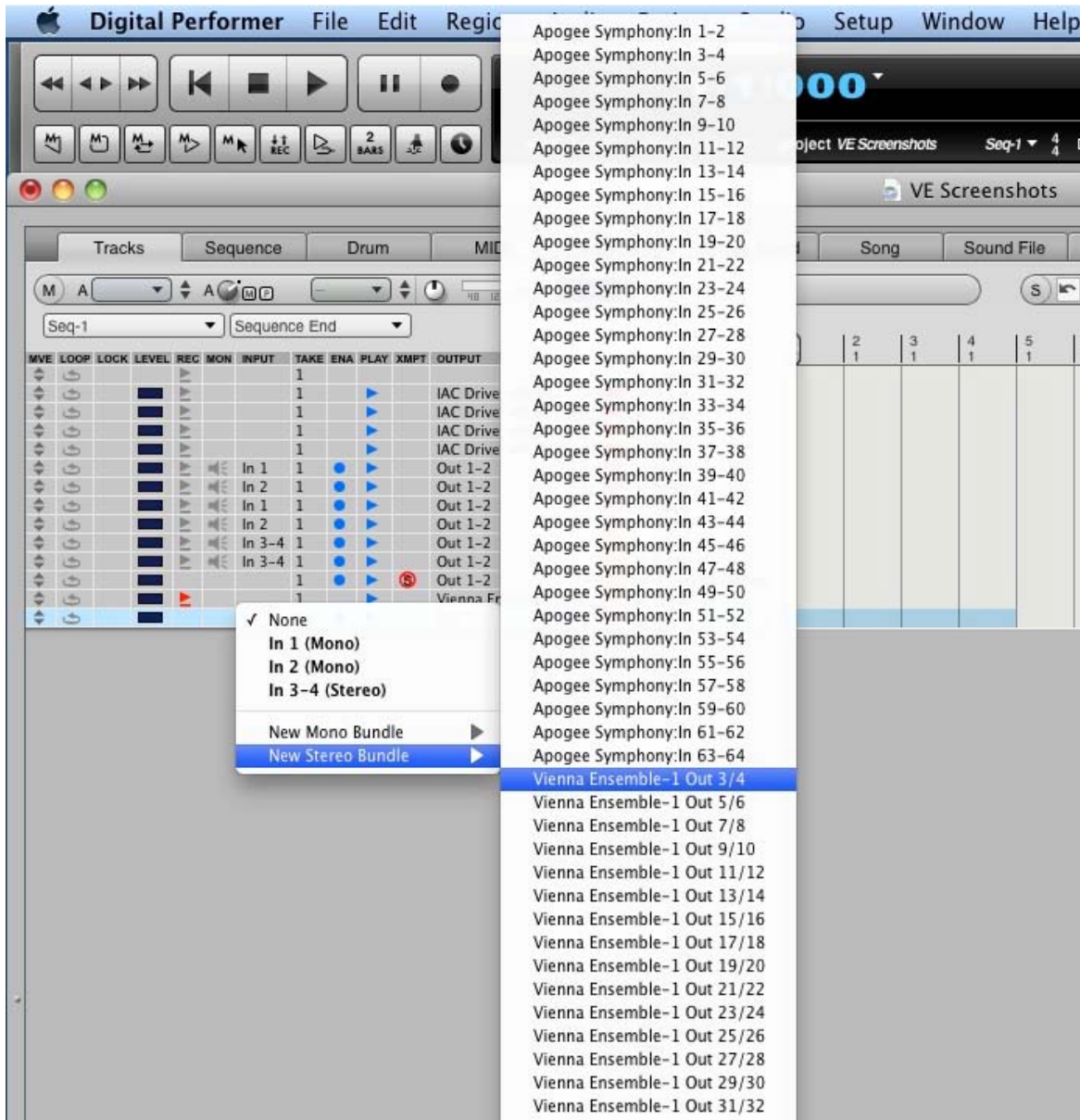
Select the MIDI channel of your choice for each track ...



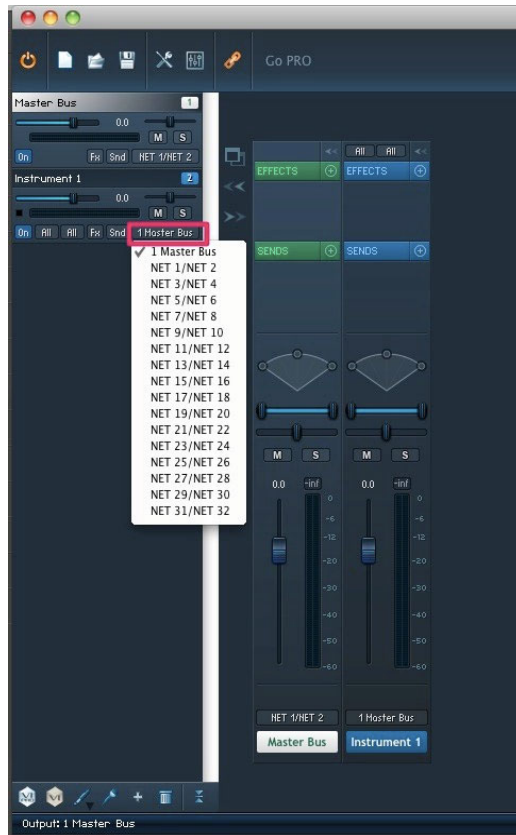
... and add an auxiliary track.



You can now check the available Stereo Outputs of Vienna Ensemble in the inputs of your Aux Track.



Assign the different outputs in Vienna Ensemble. It is also possible to assign the outputs underneath the fader of each channel.



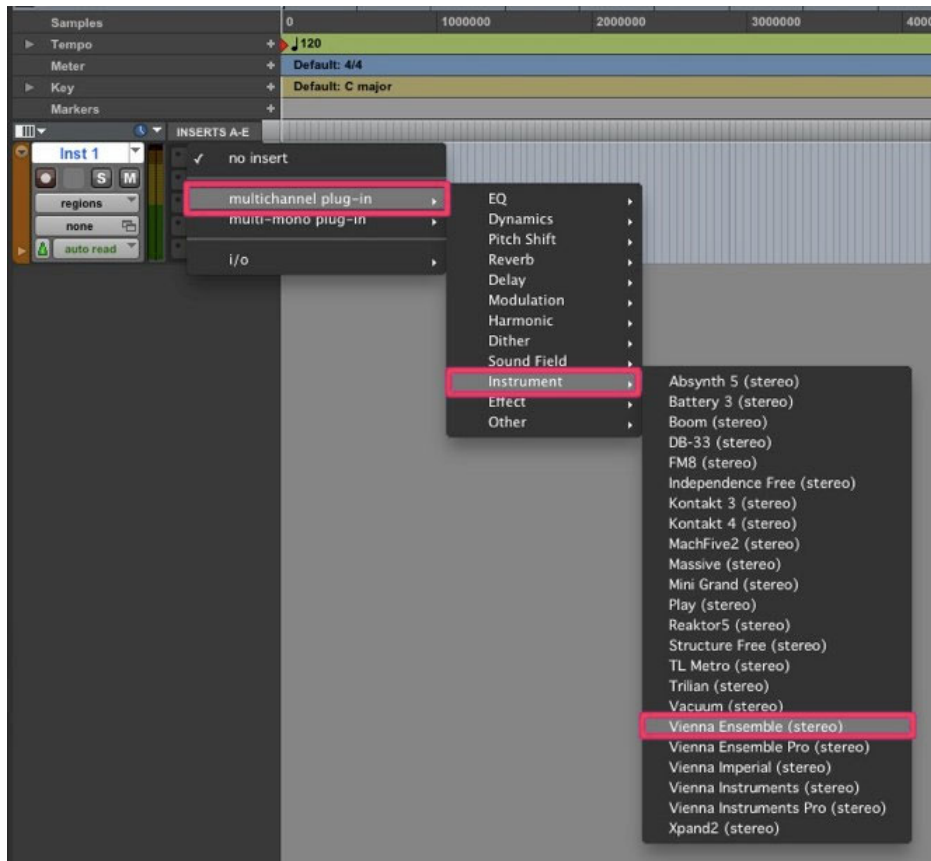
Pro Tools

Create a Stereo Instrument track.

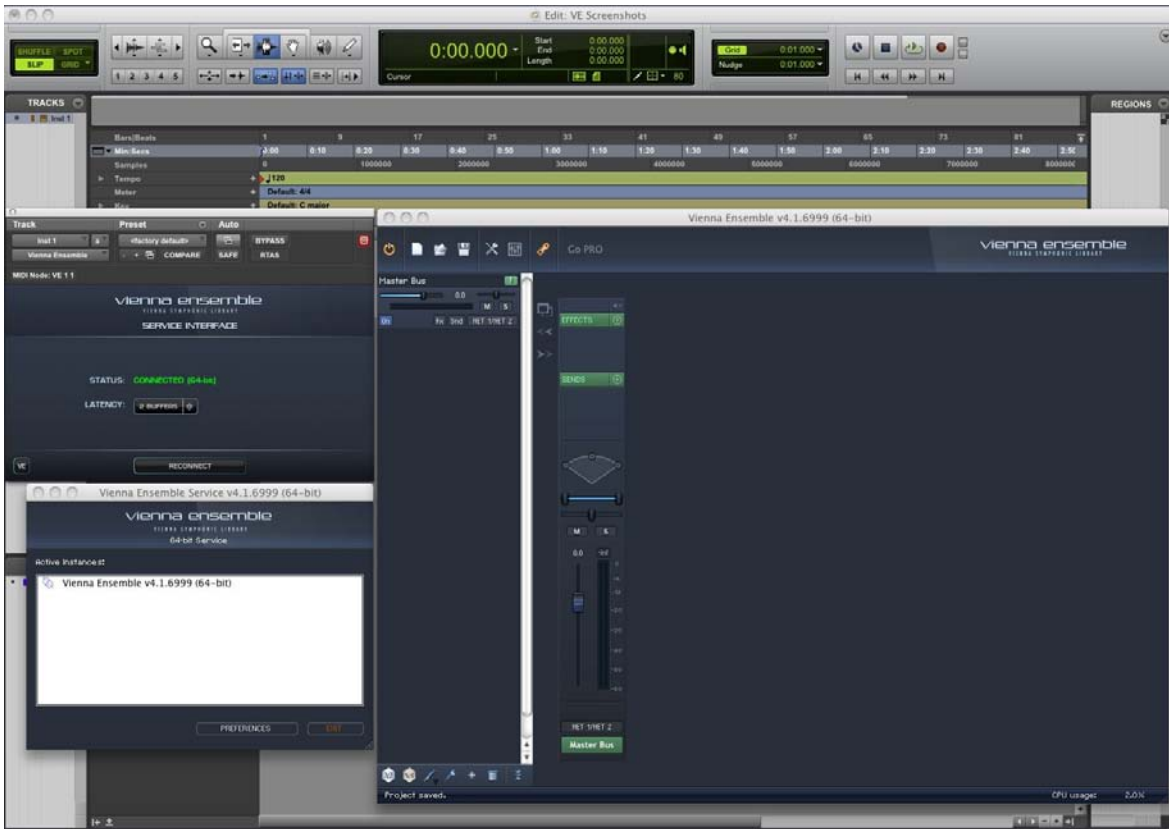


27

Assign the Vienna Ensemble as a multi-channel RTAS plug-in.

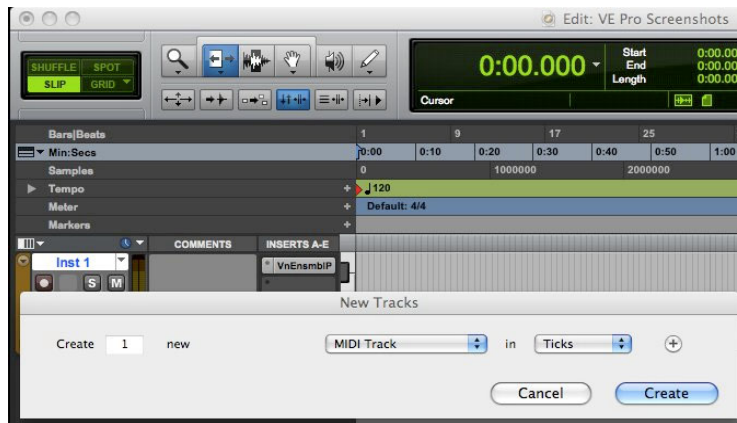


The windows you will see now are the Vienna Ensemble Service Interface, the Vienna Ensemble Service and the Vienna Ensemble GUI.



28

Create new MIDI tracks as needed. With RTAS, the amount of MIDI ports can be set in the **Vienna Ensemble Service** Preferences.



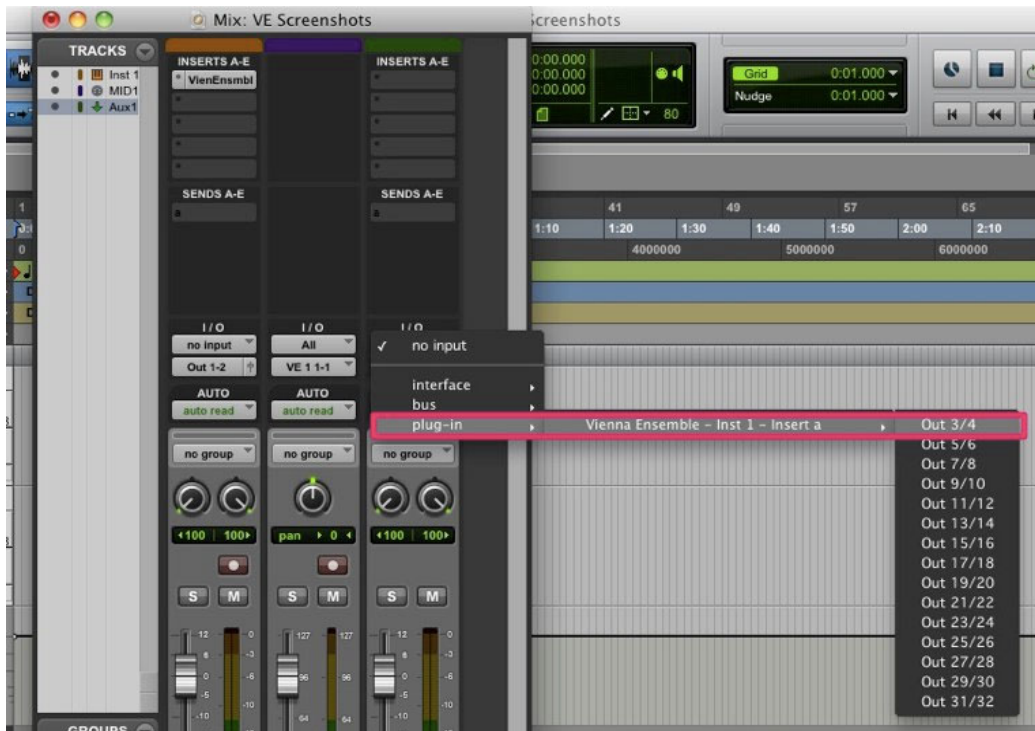
In the mixer, assign the MIDI channels to the Vienna Ensemble (shown as “VE”).



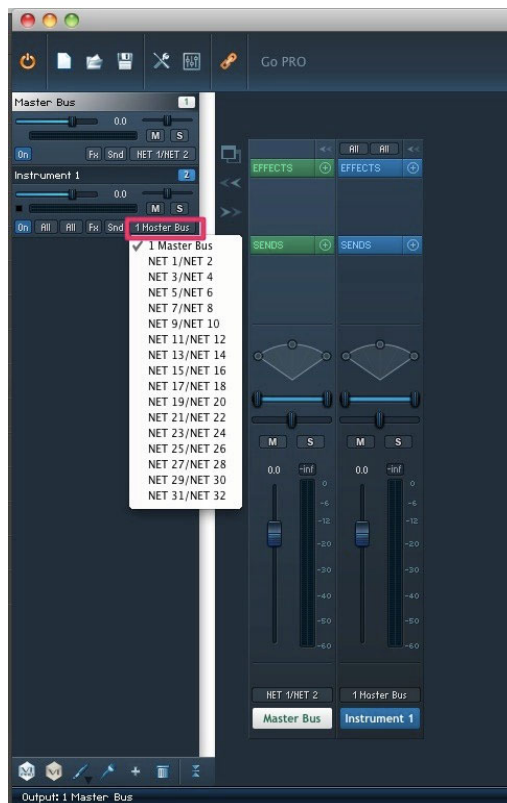
Now, create an Aux track and as many Stereo Aux Inputs as you will need.



Assign the Vienna Ensemble outputs to the inputs of your Aux track.

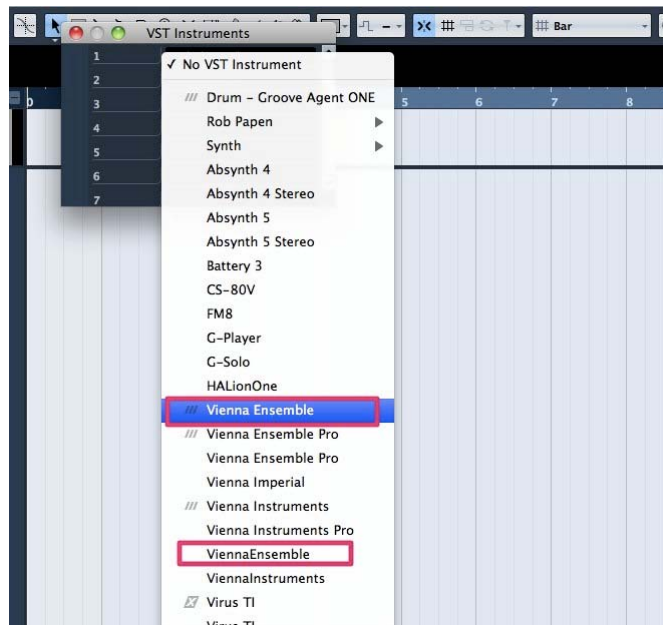


Assign the different outputs in Vienna Ensemble. It is also possible to assign the outputs underneath the fader of each channel.



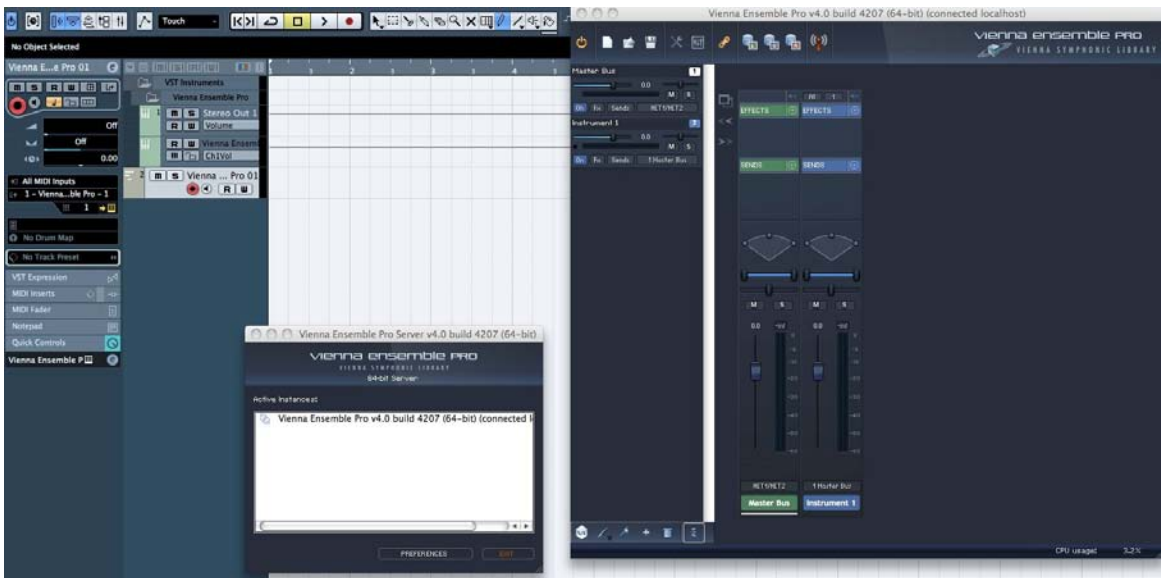
Cubase

Instantiate **Vienna Ensemble**. You can choose between a VST 3 and a “normal” VST version.



31

The windows you see are the Vienna Ensemble Service and the Vienna Ensemble GUI. If you open the plug-in, the Service Interface will open again.



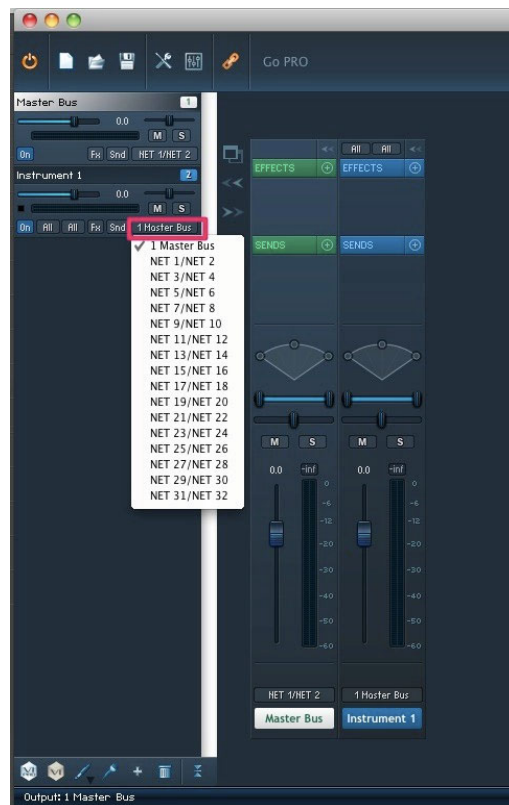
Click on the sign to the left of “Vienna Ensemble” to see the available Vienna Ensemble outputs. You can activate them separately or one by one, depending on how many you need.



The corresponding stereo channels will be created automatically in your mixer.



Assign the different outputs in Vienna Ensemble. It is also possible to assign the outputs underneath the fader of each channel.



Glossary

Channel Preset: Saves all settings of a Vienna Ensemble Pro Channels (FX, Routing, Panning, Outputs...).

Channel Set: Multiple Channel Presets – a Channel Set can be saved and loaded in the Channel menu

Directory Manager: Shows the Sample Content of your Vienna Instruments Collections and connects it with your software.

eLicenser Control Center: Manages the licenses of your Vienna Symphonic Library products.

Master Computer: Hosts your sequencer, running the Vienna Ensemble PRO Server Interface and possibly Vienna Ensemble PRO Server (as localhost).

Multi-timbral virtual Instruments: All virtual instruments that offer more than 1 MIDI Channel.

Vienna Ensemble Service Interface: Connects with the Vienna Ensemble Service(s) on your computer. The Service Interface works as AU/VST/VST3/RTAS plug-in.

Vienna Ensemble Service Window: Displays all available instances and their status.

Vienna Ensemble Service: Available in 32-bit and 64-bit. The backbone of Vienna Ensemble PRO. The Service Interface automatically starts the Vienna Ensemble Service with the first instantiation.

Vienna Ensemble Stand-alone: The basic form of the software, connected the old-fashioned way.

Vienna Instruments: The tailor-made sample player for Vienna Instruments Collections. Implemented in Vienna Ensemble.

Vienna Instruments PRO: The next evolutionary step from Vienna Instruments, with many new features such as Human Performance Control.

ViennaKey: Contains the licenses of your Vienna Symphonic Library products.

Support, Questions, Videos, Forum ...

We hope that this introduction to Vienna Ensemble was a helpful companion during your first steps with our new mixing and host software and wish you many joyful hours of composing and inspiration!

34

If you're not familiar with the Vienna Instruments included in Vienna Ensemble, or just want to make sure, please have a look at the **Vienna Instruments Manual** and the **video tutorials** on our website! And if they don't provide the information you need, please feel free to post your questions in our [Forum](#), or send an e-mail to our [support team](#).

We wish you a great time with Vienna Ensemble!

Your Vienna Symphonic Library Team