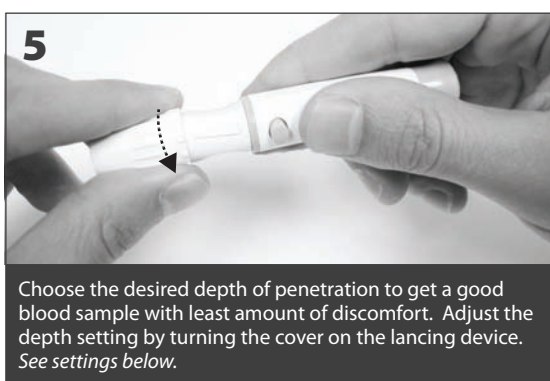
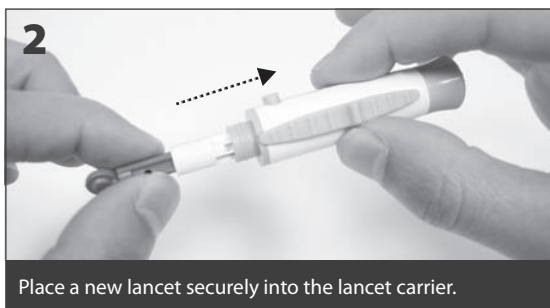


Instructions:

Regular & Alternate Site
Testing (AST)

Easy•Touch® Lancing Device with Ejector



Settings



delicate skin

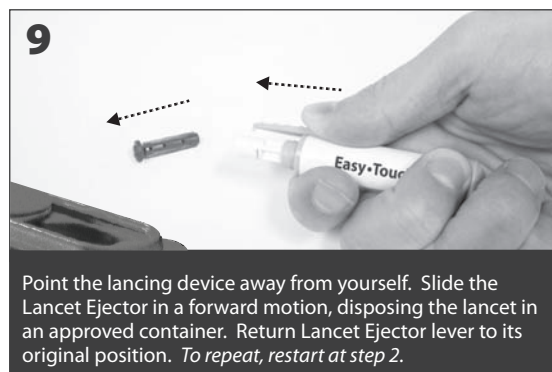
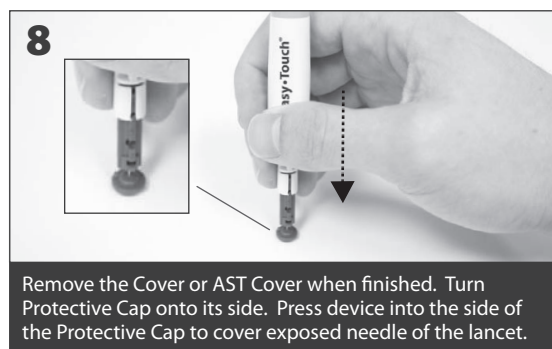
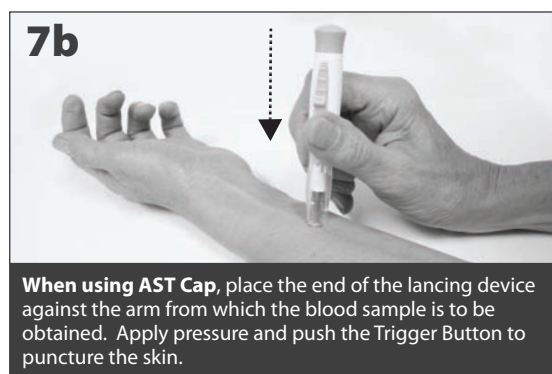
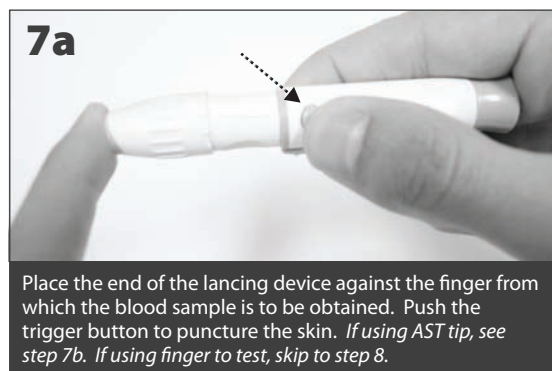


normal skin



thick/callused skin

.....



CLEANING YOUR LANCING DEVICE

To clean these items, wipe them with a soft cloth dampened with water and mild detergent. Do not immerse the lancing device in any liquid. To disinfect these items, prepare a solution of one part household bleach to ten parts water. Wipe the lancing device with a soft cloth dampened with this solution. Immerse the cap only in this solution for 30 minutes. After disinfecting, rinse briefly with water and allow both to air dry.