

# ProRAE Guardian™

## Version 1.5

# Quick Reference Guide



For a complete description of program functions, please consult the *ProRAE Guardian™* User's Guide (included on the software CD).

# CONTENTS



1. Key Features
2. System Requirements
3. User Interface Overview
4. Connecting Devices with PRG (ProRAE Guardian)
5. Managing Security
6. Setting Up Email Notification
7. LogView
8. Working with Maps & Image Overlays
9. Setting up a Remote Viewer
10. Sharing Data using Cascade Mode
11. Support

# KEY FEATURES



- Real-time device data monitor for real-time decisions
- Map and image overlays for device and threat location
- Remote data viewer for remote command centers
- Cascade Mode for consolidated data view from multiple remote PRG installations
- LogView with graphical and text datalogs for identifying trouble spots and performing retrospective analysis
- Email notification for remote alarming

# SYSTEM REQUIREMENTS



## Hardware

- Pentium (or compatible) CPU, 1.0 GHz or higher
- Color monitor (1024x768 or higher resolution, 16-bit color)
- 100 MB of free hard disk space for software
- CD-ROM drive
- 1.0 GB RAM
- Serial port (RS-232/USB COM port) for device/modem connection
- Serial communication cable or USB-to-serial cable/adaptor
- Sound card (to enable local sound notifications)
- LAN connection for network-connected devices and / or data sharing
- RAE Systems monitors or compatible device(s)

## Software

- Microsoft Windows (XP SP3, Vista, or Windows 7).
- Adobe Acrobat Reader V5.0 or higher to view product documentation
- Live Internet connection for Google Maps

# USER INTERFACE OVERVIEW



**Global Menu**

**Tab Area**

**Main Toolbar**

**Device Information Pane**

**Map Pane**  
Google Map  
ESRI Map  
Image View  
Device List

**Device List Pane**

**Status Bar**

**System Information Pane**

**Device Information Table:**

Time	CO	VOC	RH	Temp
HH:MM:ss	ppm	ppm	%	°F
09:02:09	0.6	1.36	48	67.3
09:02:14	0.6	1.37	48	67.3
09:02:16	0.6	1.36	48	67.3
09:02:19	0.4	1.35	48	67.3
09:02:22	0.4	1.34	48	67.3
09:02:26	0.4	1.31	48	67.3
09:02:29	0.6	1.30	48	67.3
09:02:32	0.4	1.34	48	67.3
09:02:36	0.6	1.38	48	67.3
09:02:39	0.6	1.38	48	67.3

**System Information Log:**

```

01/11/2012 15:55:13: RCS: Listen on TCP port 9733 ...
01/11/2012 15:55:14: Viewer Mode: Connect to 107.20.149.25
01/11/2012 17:49:41: Viewer Mode: No data from remote serv
01/11/2012 17:49:41: Viewer Mode: Connect to 107.20.149.25
01/11/2012 19:01:02: Viewer Mode: No data from remote serv
01/11/2012 19:01:03: Viewer Mode: Connect to 107.20.149.25
01/11/2012 19:07:42: Viewer Mode: Disconnect from 107.20.149.25
01/11/2012 19:07:43: Viewer Mode: Connect to 107.20.149.25
01/11/2012 19:32:12: Viewer Mode: No data from remote serv
01/11/2012 19:32:12: Viewer Mode: Connect to 107.20.149.25
01/11/2012 19:34:34: Viewer Mode: No data from remote serv
01/11/2012 21:14:35: Viewer Mode: Connect to 107.20.149.25
01/11/2012 23:21:14: Viewer Mode: No data from remote serv
01/11/2012 23:21:21: Viewer Mode: Connect to 107.20.149.25
01/11/2012 23:52:19: Viewer Mode: No data from remote serv
01/11/2012 23:52:19: Viewer Mode: Connect to 107.20.149.25
01/12/2012 01:43:19: Viewer Mode: Disconnect from 107.20.149.25
01/12/2012 01:43:20: Viewer Mode: Connect to 107.20.149.25
01/12/2012 08:19:56: Viewer Mode: No data from remote serv
01/12/2012 08:20:26: Viewer Mode: Connect to 107.20.149.25
  
```

**Status Bar:** Version: 1.0.0 | Notice (27) | Warnings (0) | Alarms (48) | Total Instruments: 16 | Online Instruments: 8 | Alarming Instruments: 1 | User: administrator Autologoff in 00:24:46

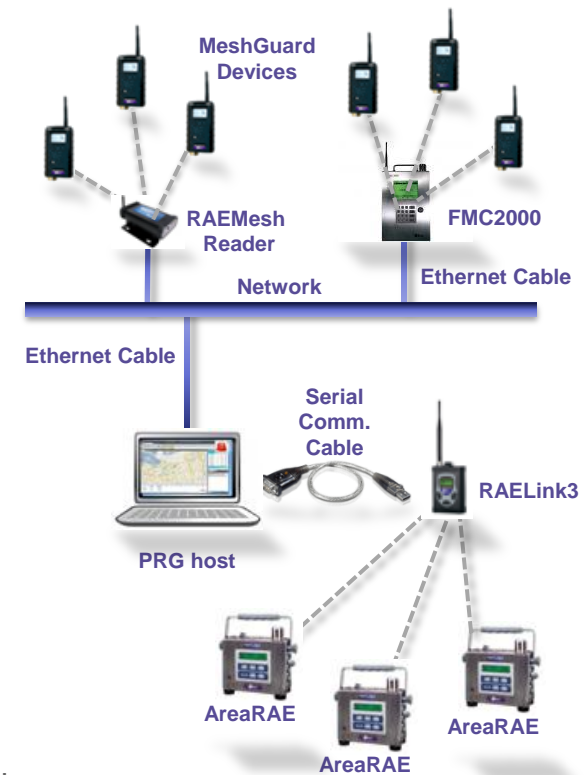
# CONNECTING DEVICES WITH PRG



Follow these steps to set up PRG with gas and radiation detection devices:

1. Make sure you have the following:
  - ProRAE Guardian (PRG) Software CD
  - Serial Communication Cable or USB-to-serial adapter/cable
  - Modem (such as RAELink3 or RAELink2)
  - Devices (such as AreaRAE, MeshGuard, RAEMesh Reader, etc.)
2. Install PRG software on a computer
3. Set up your host RAELink3 modem\*
  - See *RAELink3 User Manual* for details
4. Connect remote devices with the modem
  - See your device *User Manual* for details
5. Connect *modem* with computer using serial communication cable
6. Start *ProRAE Guardian* software
7. Set up *Data Sources* and start reading real-time data from your devices
  - Refer to the **Data Sources** section for details

\* If you have a *RAEMesh Reader* instead of a *RAELink3* modem, then connect it with your computer either through serial communication or Ethernet cable.



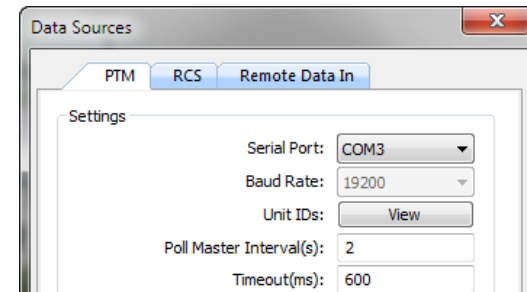
# CONNECTING DEVICES WITH PRG...



## Data Sources

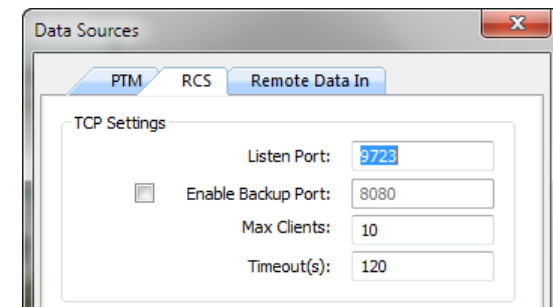
### PTM (Point-to-Multipoint protocol)

- Use this setup for devices like *AreaRAE* and others that support PTM protocol and are directly connected to this PC through a modem
- Make sure to select the correct *Serial Port*; otherwise PRG may not be able to detect and receive data from your devices
  - You can go to *Windows Device Manager* and check the correct COM port for your USB-to-serial adapter/cable



### RCS (RAE Communication Standard protocol)

- Use this setup for MeshGuard devices connected to this PC through a modem
- If your modem or host controller is connected via Ethernet, make sure you have configured the TCP Settings correctly to point to this PC. Refer to the modem's user's guide.



# MANAGING SECURITY

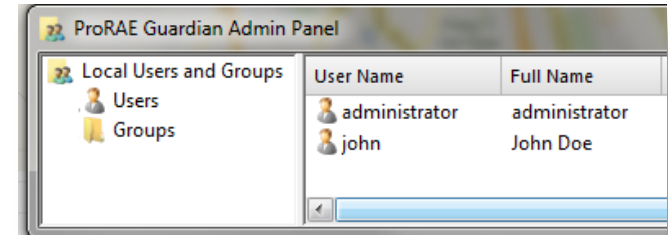


There are three different types of features that support security in PRG.

## Admin Panel - *Global Menu > Administrator > Admin Panel...*

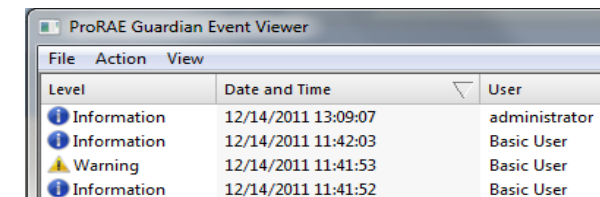
- Use this feature to manage user accounts and control their access to the system
  - Default user account:
    - Username: administrator
    - Password: raesystems

**NOTE:** Changing critical settings requires user login.



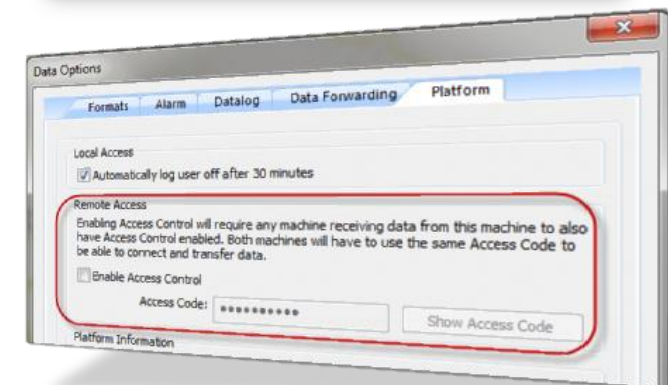
## Event Viewer - *Global Menu > Event Viewer*

- Records all activities for later review and analysis



## Access Control — *Options > Data Options > Platform*

- Enables secured data sharing among multiple ProRAE Guardian installations



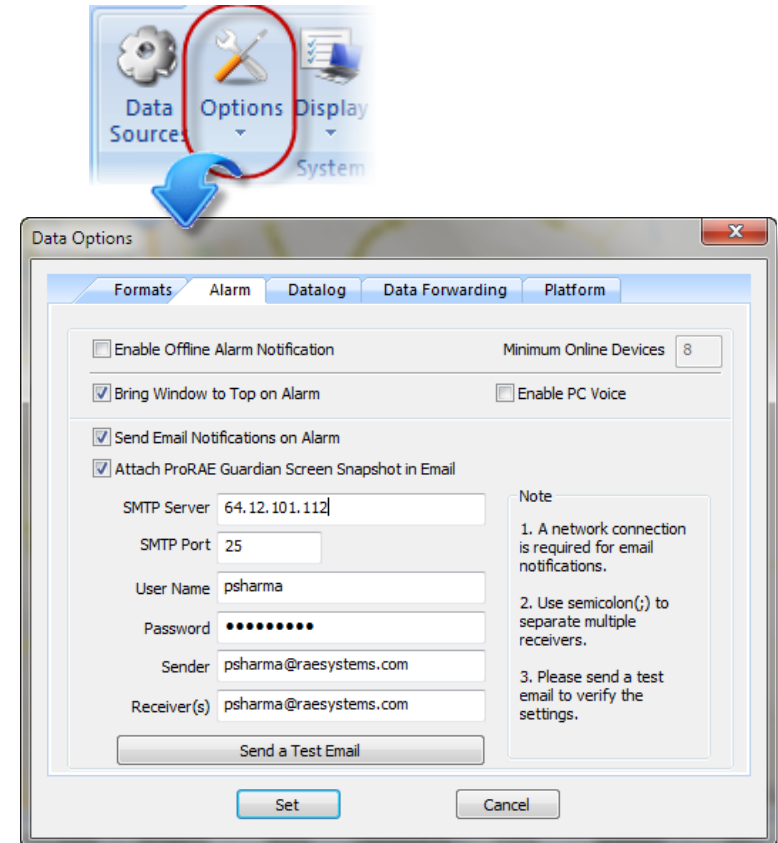
# SETTING UP EMAIL NOTIFICATION



PRG allows you to receive email notification for all alarm conditions.

## Email Setup – Options > Data Options > Alarm

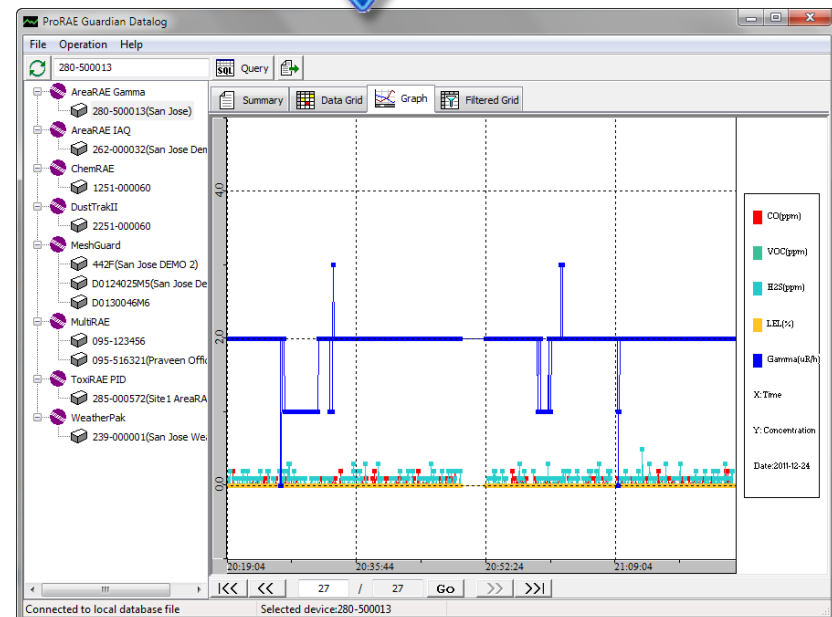
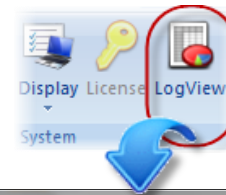
1. Consult your IT department if you do not have the required information for email setup
2. Make sure that you can use the *User Name* and *Password* to access your email from this PC from outside PRG



LogView allows you to look at device data for retrospective analysis and also to export it for reporting purposes.

## Key Capabilities

- Lists all devices that have communicated with PRG and logically groups them under their brand names
- Provides a summary view for each device's data
- Supports graphical and text views for easy visualization
- Allows filtering and export of data to CSV format



# WORKING WITH MAPS & IMAGE OVERLAYS



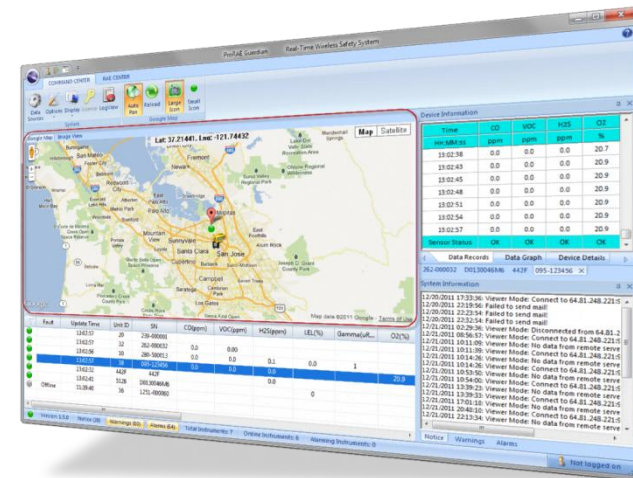
The Maps and Image Overlays feature allows you to see precise locations of your devices along with alarm status.

## Google Map

This is the default map view that requires a live Internet connection.



- Use the **Google Map** toolbar to manipulate the device view on the map
  - Click the **Auto Pan** button to enable or disable automatic movement of the map to display the device location, if it was not in the view
  - Click the **Small Icon** button to see the device status on the map
    - - Online    ● - Offline    ▲ - Alarming    ■ - Fault Alarm
- Place devices on the map manually, if needed (*only works for PRG Host connected devices*)
  1. Select device in *Device List Pane*
  2. Right-click on the map where you want to place the device
  3. Confirm

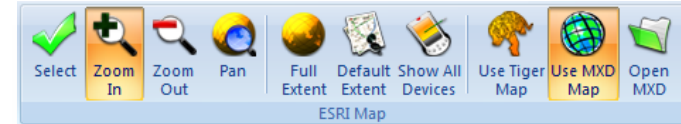


## WORKING WITH MAPS & IMAGE OVERLAYS...



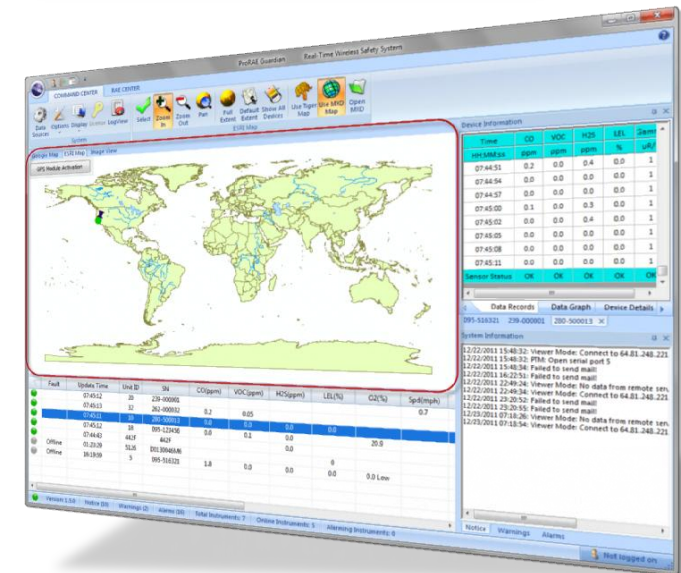
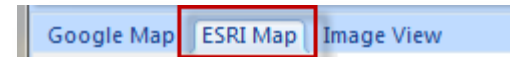
## ESRI Map

This is an optional feature that requires separately licensed **GPS Module v2.2**. ESRI Map is an alternative solution when live Internet connection is not available.



# Installing ESRI Map

1. Make sure PRG is already installed
2. Install **GPS Module v2.2** (purchased separately)
  - The **ESRI Map** tab appears in the Map Pane
3. Select the **ESRI Map** tab in the Map Pane
  - The **ESRI Map** toolbar appears
4. Select “**Open MXD**” from the toolbar and select the required MXD file
  - Activate the GPS Module by entering your *Unlock Key* when prompted



# WORKING WITH MAPS & IMAGE OVERLAYS...



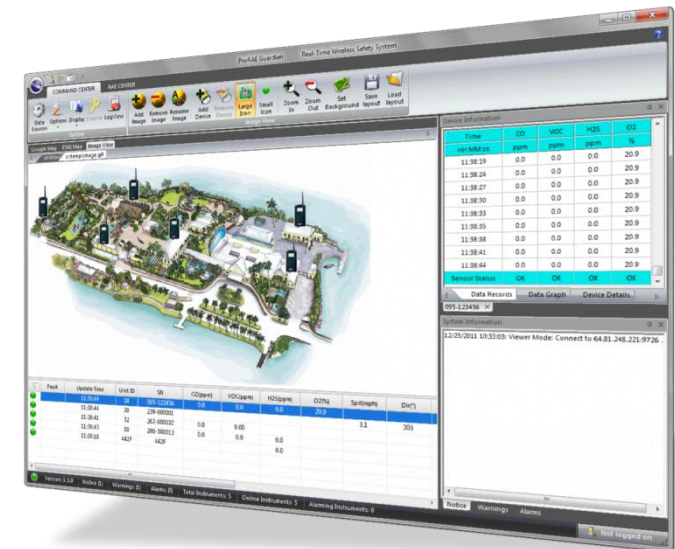
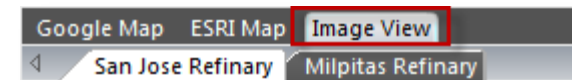
## Image View

This feature allows you to use a map or layout of a facility to show locations of devices and/or specific hazard zones.



To use image overlays

- Click on the **Image View** tab in the Map Pane
- Click “**Add Image**” on the *Image View* toolbar and give a name to the image overlay (example: facility name)
- Click “**Set Background**” on the *Image View* toolbar and select an image file (jpg, png, bmp) for the facility
- Select a device in the *Device List Pane*
- Click “**Add Device**” on the *Image View* toolbar
- Move your mouse over the image and click where you want to add the device
- Click “**Save Layout**” on the *Image View* toolbar to save the image overlay with devices for later reuse



**NOTE:** You can add up to 16 image overlays.

# SETTING UP REMOTE VIEWER



The **Viewer Mode** allows you to remotely monitor real-time data from remote devices connected to a PRG Host.

## Required Settings

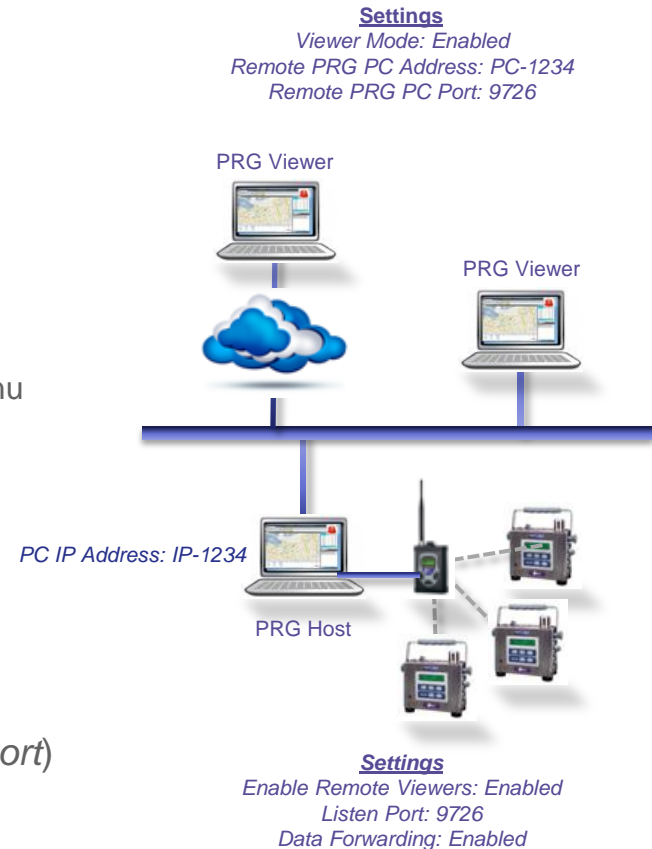
### PRG Host Setup – *Options > Data Options > Data Forwarding*

- Check the **Enable Remote Viewers** option
- Check the **Enable Data Forwarding** option
- Note the IP address and **Listen Port** of this PC
  - You can use the “*Global Menu > About ProRAE Guardian*” menu option to determine the IP address of your PRG Host PC

### PRG Viewer Setup – *Data Sources > Remote Data In*

- Check the **Viewer Mode** option
- Enter the **Remote PRG PC Address** (the PRG Host IP address)
- Enter the **Remote PRG PC Port** (the PRG Host *Listen Port*)

**NOTE:** You can set up as many as 32 PRG Viewers for a PRG host.



# SHARING DATA USING CASCADE MODE



The **Cascade Mode** feature allows you to aggregate and monitor real-time data from multiple remote PRG Hosts

## Required Settings

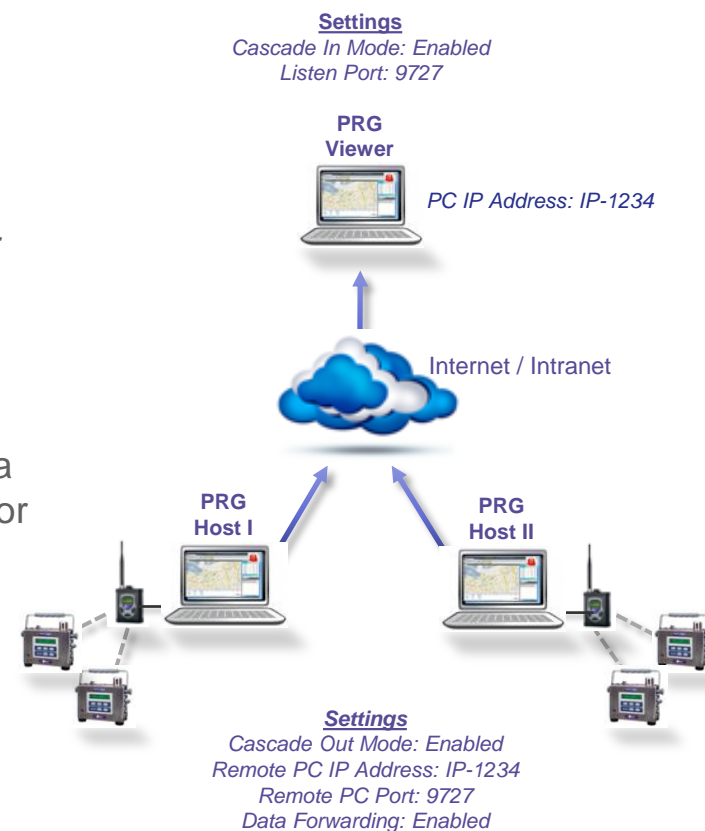
### **Cascade In Mode** – *Data Sources > Remote Data In*

- Use this setting on the **PRG Viewer** to aggregate and monitor device data from multiple remote PRG Hosts

### **Cascade Out Mode** - *Options > Data Options > Data Forwarding*

- Use this setting on all **PRG Hosts** to send out device data to a PRG Viewer that acts as a data aggregator and remote monitor

**NOTE:** Both Cascade Mode and Viewer Mode can be enabled in a PRG instance.



If you have difficulty using ProRAE Guardian™, consult the User's Guide. If that does not resolve the problem, please contact RAE Systems, Inc. for technical support:

Monday through Friday, 7:00 AM to 5:00 PM Pacific (US) Time

**Phone:** +1 888-723-4800 (toll-free) | +1 408-952-8461

**Email:** [tech@raesystems.com](mailto:tech@raesystems.com)

Outside the United States, visit [www.raesystems.com](http://www.raesystems.com) for your regional support contact information.