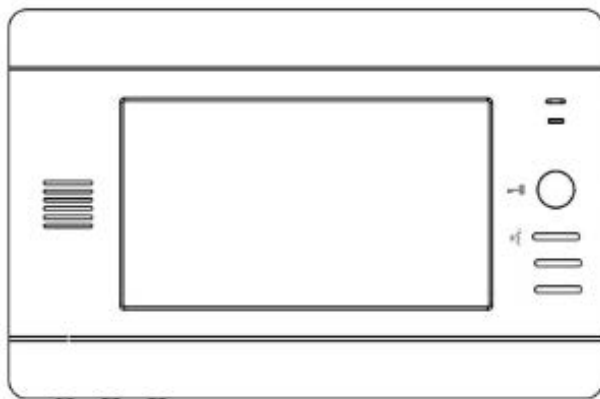
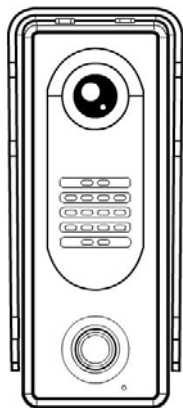




SVT-4 Outdoor Station A

User Manual

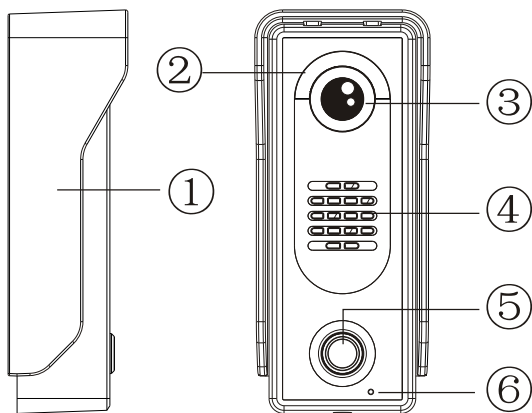


Please read this user manual prior to installing the system, and keep it well for future use.

CONTENTS

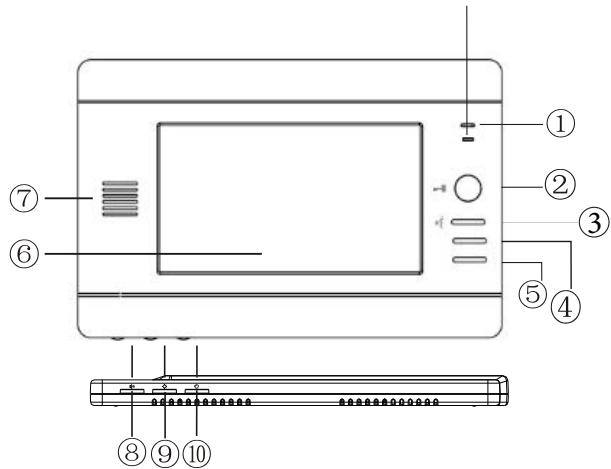
1. Parts and Functions.....	1
2. Terminal Descriptions	2
3. Specifications.....	2
4. Mounting.....	3
5. System Wiring and Connections	4
5.1 SVT-4 System with one entrance	4
5.2 SVT-4 System with two entrances	5
5.3 SVT-4 Wiring Connection	6
6. Cable Requirements	7
7. User Instructions	8
7.1 Visitor calls	8
7.2 Monitor	9
7.3 Intercom	10

1.Parts and Functions



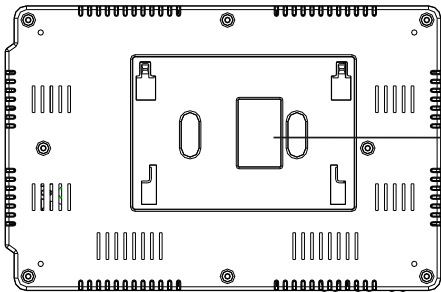
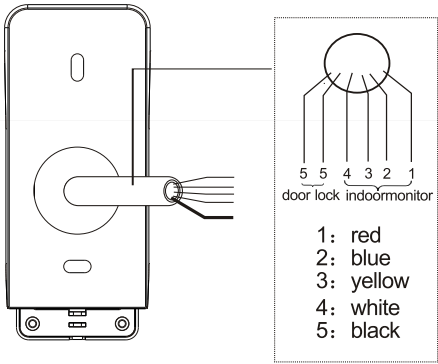
#	Description
1	Rain cover
2	LED lights
3	High resolution camera
4	Built-in speaker
5	Call button
6	Built-in microphone

Status light.
 Calling in: red light
 Monitoring/Talking: blue light



#	Description
1	Built-in microphone
2	Monitor button
3	Intercom button
4	Door unlock button
5	Talk button
6	TFT 7" color display
7	Built-in speaker
8	Talking/Ring volume
9	Brightness
10	Contrast

2.Terminal Descriptions

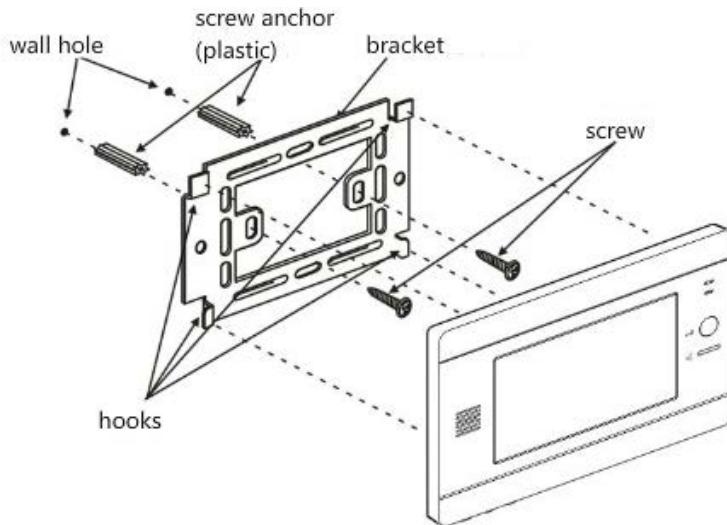
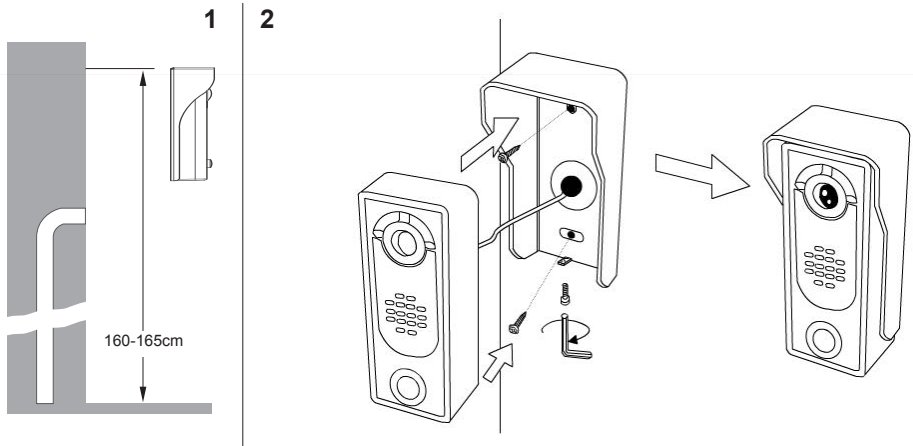


3.Specifications

OUTDOOR STATION
Voltage: DC 14.5V
NO: Max. 14.5V, 120mA
Lock Power Supply: Must be used according to lock.
Unlocking time: 01s (can be adjusted when using SVT-T20G device)
Communication duration: 120s.
Communication transmission: 2-way communication
Working temperature: -4°F to 131°F / -20°C to +55°C

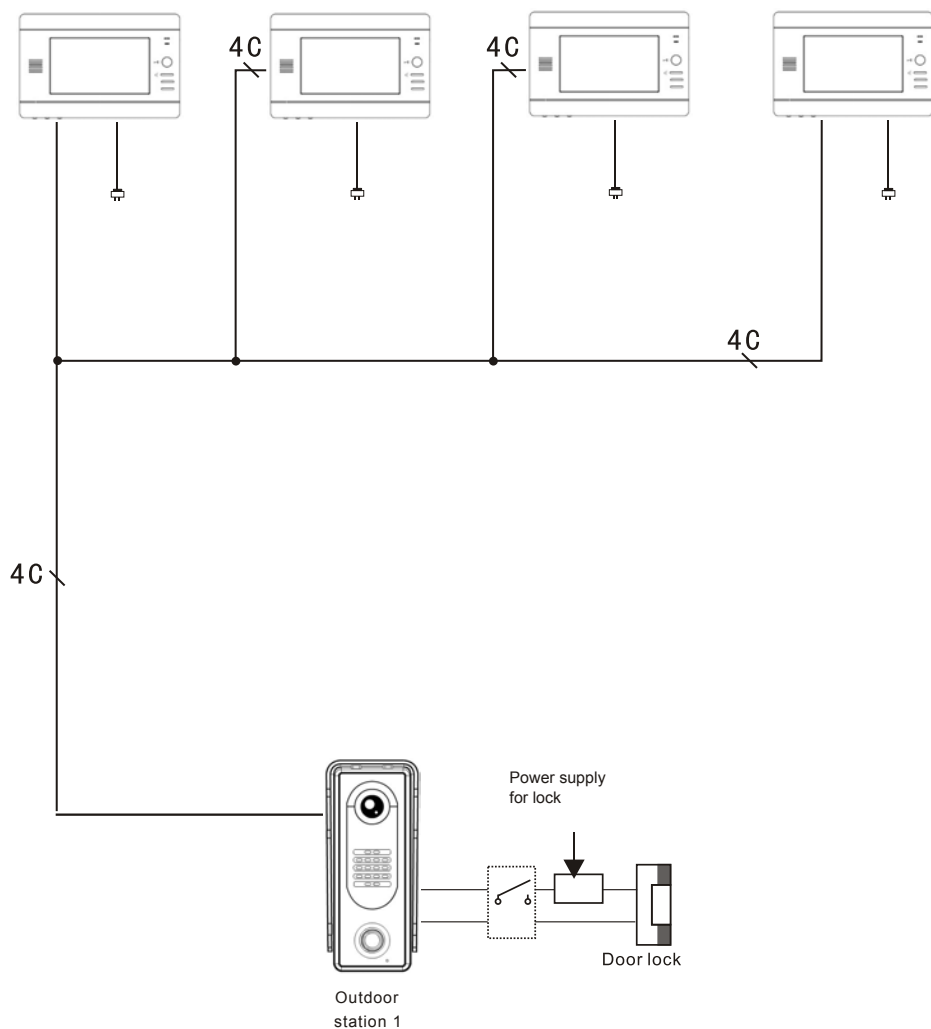
INDOOR MONITOR
Voltage: DC 14.5V
Communication duration: 120s.
Communication transmission: 2-way communication
Working temperature: 14°F to 131°F / -10°C to 55°C

4. Mounting

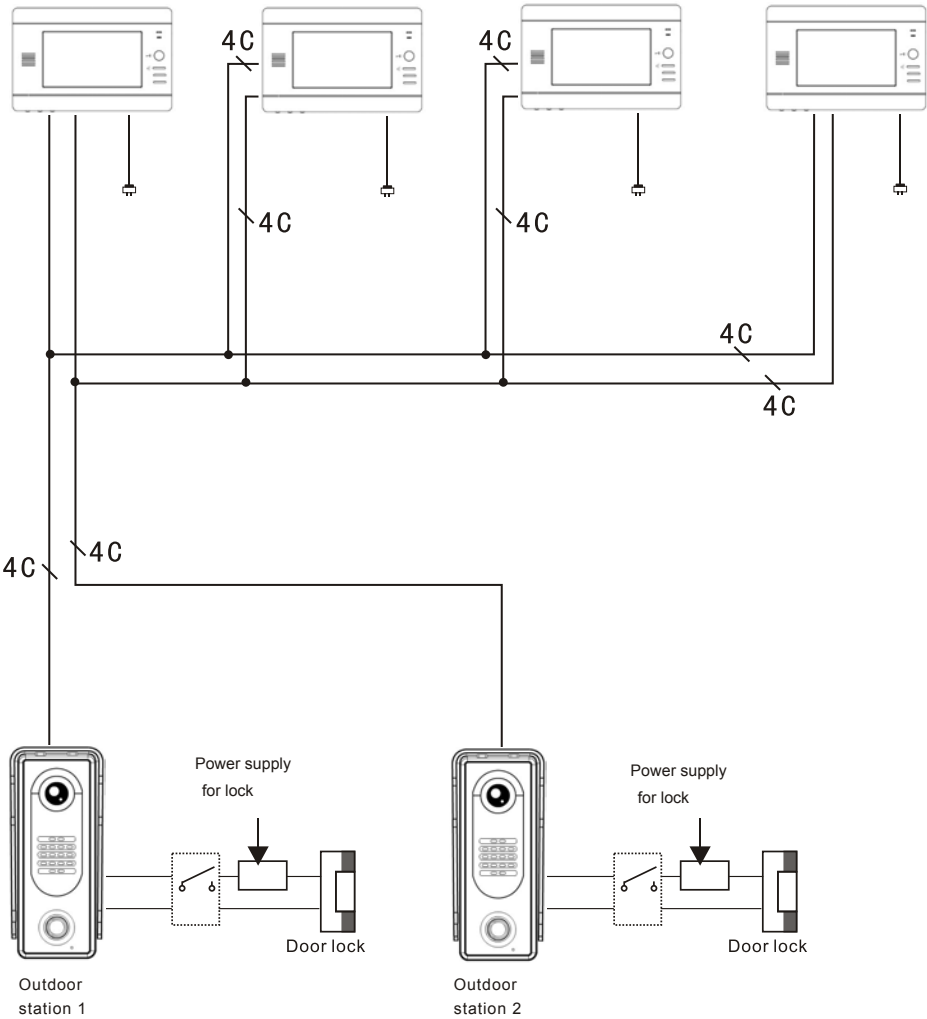


5. System Wiring and Connections

5.1. SVT-4 SYSTEM WITH ONE ENTRANCE

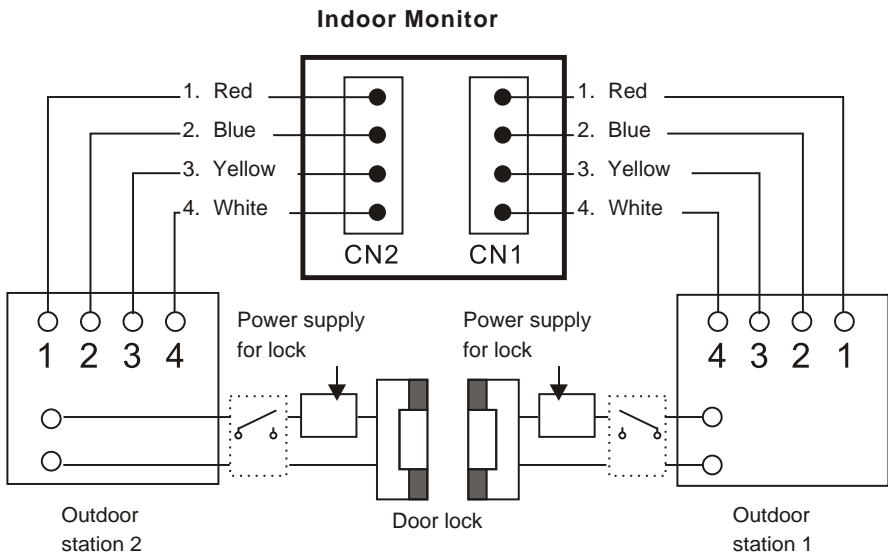


5.2. SVT-4 SYSTEM WITH TWO ENTRANCES



5.3. SVT-4 WIRING CONNECTION

- | | | | |
|---------|---------|-----------|----------|
| 1. Red | 2. Blue | 3. Yellow | 4. White |
| 1-Audio | 2-GND | 3-V+ | 4-Video |



- ☐ J1
- ☐ J3
- ☐ J2

NOTE: Do not remove any of the jumpers from the back of the indoor monitors.

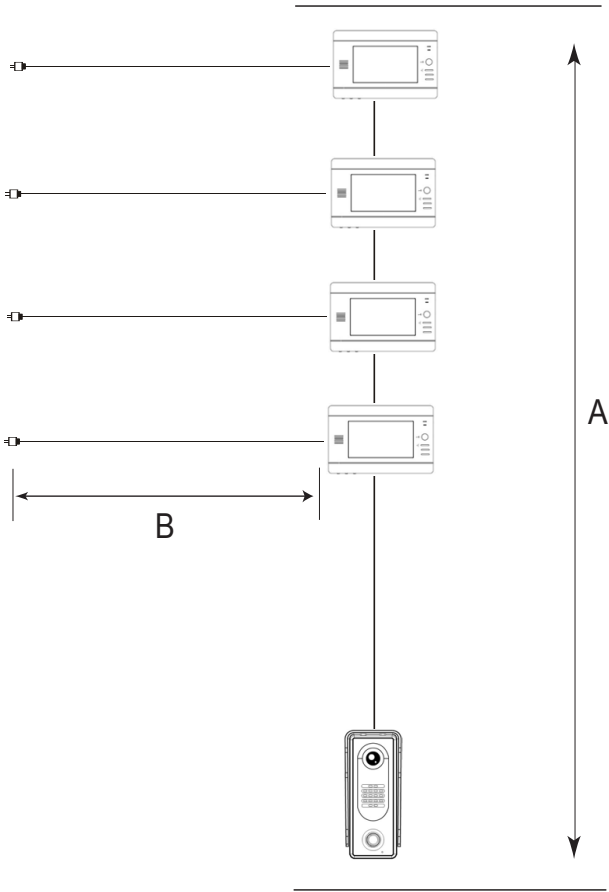
By removing a jumper or changing its position, some of the features may not work properly.

6.Cable Requirements

Cable Usage	A	B
CAT5 cable (must solder the wires together to ensure a good connection). Using different cables may affect the maximum distance the system can reach.	230 feet 70 meters	30 feet 10 meters

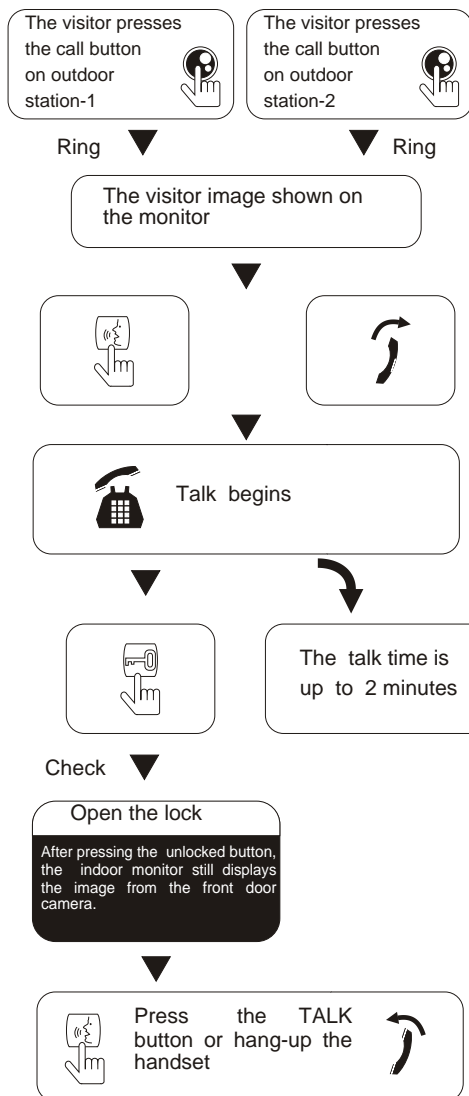
NOTE:

- 1. The system expands to a maximum of 2 outdoor stations and 4 indoor monitors.
- 2. Each indoor monitor requires its own power supply(14.5V, 1.3A)
- 3. We recommend soldering the wires together to ensure a good connection (Do not use wire nuts).



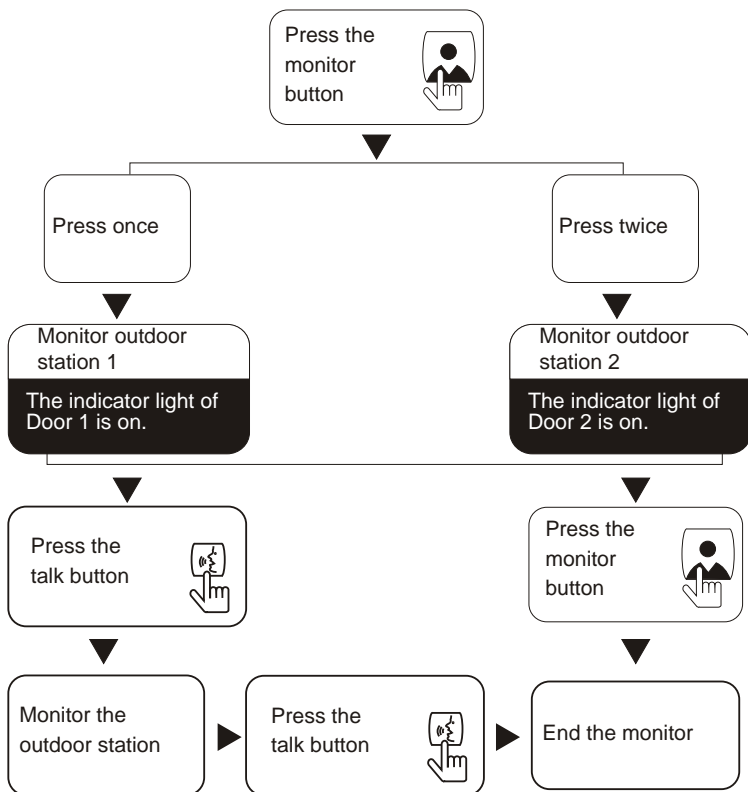
7. User instructions

7.1 Visitor calls

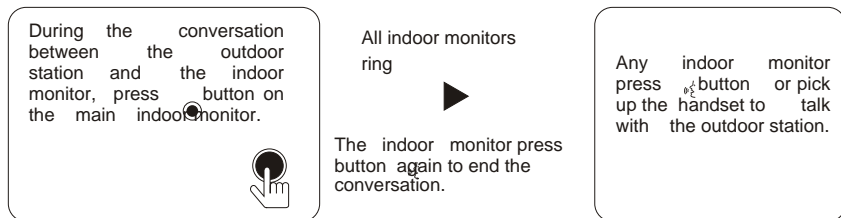


* Press the call button at anytime, the indoor monitor will show the view from the front door camera automatically. Press talking button to have communication with the visitor by the front door.

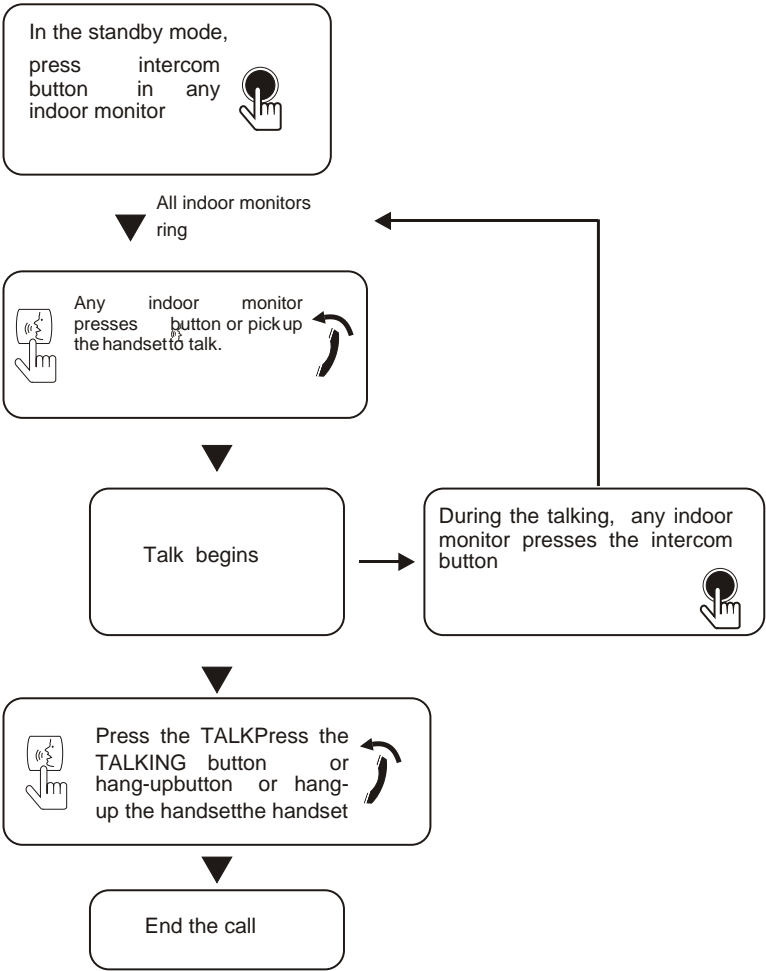
7.2 Monitor



► Call transferring from main indoor monitor to extension indoor monitor



7.3 Intercom





The design and specifications of this user manual can be changed without any notification to the user.
All copyright and interpretation rights are reserved to SVT Innovations Inc.

