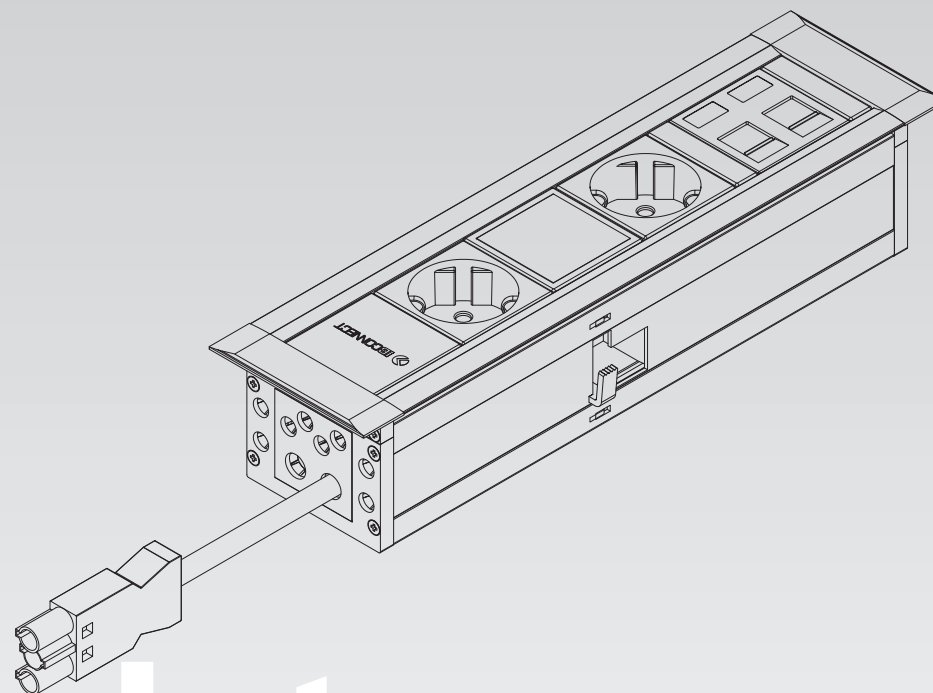


installation Guide

User manual



P El Escopar 5 31350 Peralta Navarra Spain T+34 948 753 282 F+34 948 751 462 comercial@ib-connect.com

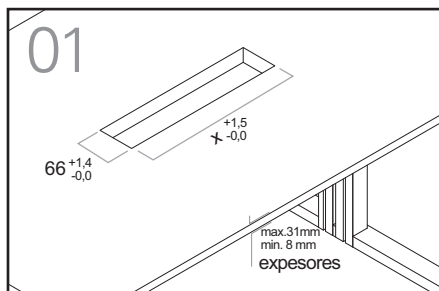


Intro

conexión de diseño empotrada
integral design connection

www.ib-connect.com

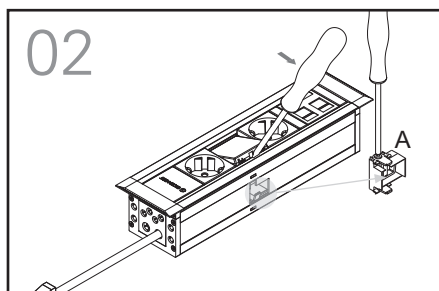




DESK INSTALLATION

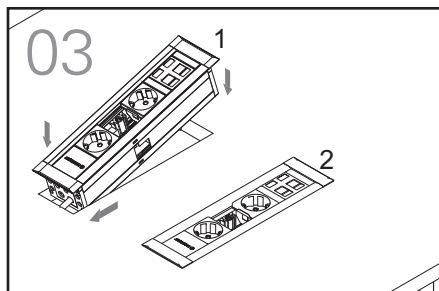
Make a cut in the table respecting the tolerances shown in fig. 1

The Intro profile frame can be installed in desks between 8 mm and 31 mm thick.

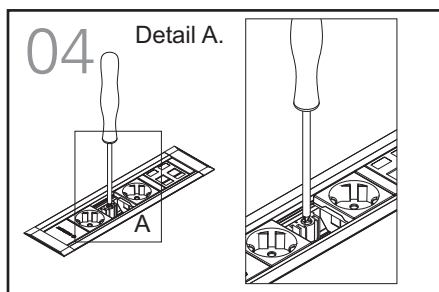


IMPORTANT: Using a very fine-tipped screwdriver, remove the covers that protect the anchor system.

Make sure that the tab of anchor "A" is inside the profile frame. If not, use a Phillips head screwdriver and turn the screw in the anchor system until the anchor tab is inside the profile frame.

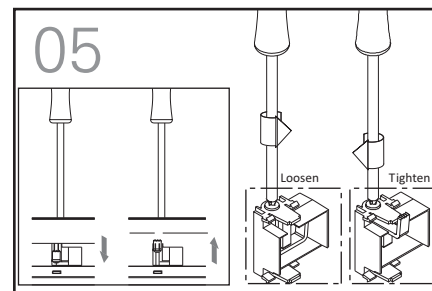


Insert the power cable first and then insert the profile frame as shown in fig. 3.



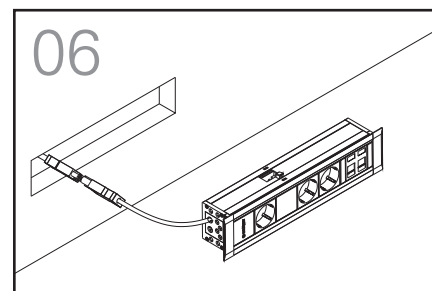
Using a Phillips head screwdriver, tighten the two anchor screws until they are tight enough to prevent movement.

If the tabs do not come out, turn the screw in the other direction and repeat the operation in the other direction.



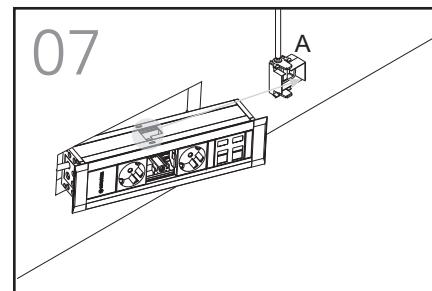
Example of how the anchor system works.

IMPORTANT: If you are using an electric screwdriver, adjust the force to avoid damaging the anchor system.



INSTALLATION IN PARTITION

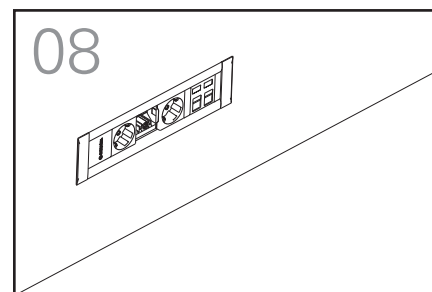
First insert the power cable and make the connections.



Using a very fine-tipped screwdriver, remove the covers that protect the anchor system.

Make sure that the tab of anchor "A" is inside the profile frame. If not, use a Phillips head screwdriver and turn the screw in the anchor system until the anchor tab is inside the profile frame.

Insert the profile frame as shown in fig. 7.



Now just put on the cover that hides the anchor system.

For any questions on the profile frame, contact us at:

oficinatcnica@ib-connect.com