

HD NIGHT VISION KEYCHAIN

SKU: KC1080NV



**USER MANUAL
FCC CE**

THANK YOU FOR PURCHASING THE HD NIGHT VISION KEYCHAIN

Please read this manual before operating the HD night vision keychain and keep it handy.

Our line of Keychain DVRs is indispensable gadgets when you need instant and easy covert color video anywhere you go. A high resolution camera and DVR are built right into the key chain. This model looks like your average keychain. The plain black design is inconspicuous when casually hung on a lanyard or among keys.

The HD night vision keychain features 1920*1080 resolution AVI video and takes 4032*3024 resolution photos. Best of all, this device can record in the dark using its night vision mode! Memory capacity is about 12 minutes per 1GB of storage. Battery life runs about 90 minutes.

Your purchase should include:

- 1 x HD Night Vision Keychain
- 1 x USB Cable
- 1 x USB Cable with RCA Plugin
- 1 x Lanyard
- 1 x 2GB MicroSD Card
- 2 x Plastic Clips
- 1 x Instruction Booklet

Contact **770-694-6921** if you are missing any of these components.

GET FAMILIAR WITH YOUR HD NIGHT VISION KEYCHAIN



Figure 1: Front View

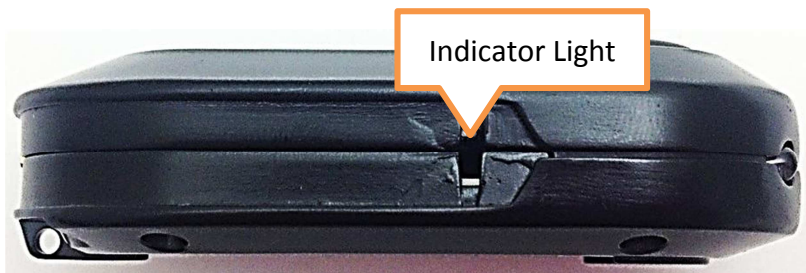


Figure 2: Side 1 without the clip

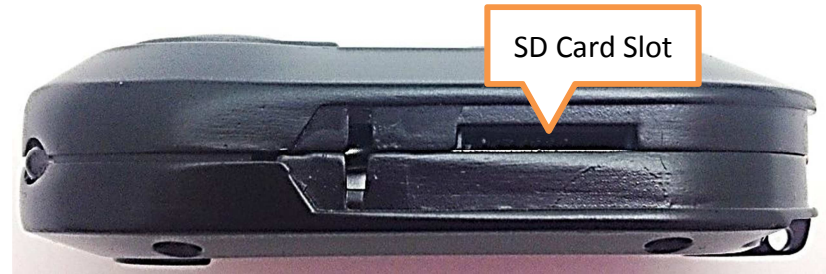


Figure 3: Side 2 without the clip



Figure 4: Top View



Figure 5: Bottom View

OPERATING THE HD NIGHT VISION KEYCHAIN

IMPORTANT NOTICE: Allow the device to charge 4 – 6 hours before using.

HOW TO CHARGE THE NIGHT VISION KEYCHAIN

1. Plug the USB cable into your PC
2. Plug the USB cable into the keychain's USB port
 - The keychain will vibrate when it receives initial power
 - While the device is charging, the red indicator light will flash
 - When the device is fully charge, the red light will be solid
3. Unplug the keychain from the USB cable when the device is done charging
 - The keychain will vibrate when it stops receiving power

HOW TO TURN THE NIGHT VISION KEYCHAIN ON

1. Push and hold the On / Off Button for 3 seconds
 - First, the red and blue will come on
 - Second, the blue light will turn off and the red light will be solid
 - Third, the keychain will vibrate once

- The keychain is now in **standby mode**

HELPFUL TIP: If you have a Smartphone, such as an iPhone or Android phone, you can use the front-facing camera to check the night vision lamp. Open the camera on your Smartphone and switch to the front-facing camera (you can see yourself on the screen) and point the night vision lamp at the camera. You should see the lamp lit up like a small flashlight.

HOW TO TURN THE NIGHT VISION KEYCHAIN OFF

1. Push and hold the On / Off Button for 3 seconds
 - First, the indicator light will flash 2 times
 - Second, the keychain will vibrate
 - The keychain is now off

HOW TO RECORD VIDEO

1. Put the keychain into **standby mode**
2. Push the On / Off Button once
 - First, the keychain will vibrate one time
 - Second, the red indicator light will blink slowly
 - The keychain is now recording live video
3. Push the On / Off Button once
 - First, the keychain will vibrate one time
 - Second, the red indicator light will be solid

- The keychain has stopped recording live video

NOTE: If you do not manually stop recording, the keychain will continuously record and automatically save files every 5 minutes until either the memory card is full or the battery runs low.

HOW TO TAKE PHOTOGRAPHS

1. Put the keychain into **standby mode**
2. Push the Mode Button
 - First, the indicator light will switch from red to blue
 - Second, the keychain will vibrate
 - The keychain is now in photography mode
3. Push the On / Off Button once
 - First, the blue light will blink one time
 - Second, the keychain will vibrate
 - The keychain has taken a photograph

HOW TO USE MOTION DETECTION

1. Put the keychain into **standby mode**
2. Push the Mode Button three times
 - The keychain is cycling through video, photography and sound mode
 - First, the indicator light will blink between blue and red/blue
 - Second, the keychain will vibrate

- The keychain is now in motion detection mode
 - When motion is detected, the red/blue indicator light will flash
- 3. Push the On / Off button to manually stop recording
 - First, the keychain will vibrate and save the file
 - Second, the indicator light will blink blue and red/blue

NOTE: If you do not manually stop recording, the keychain will continuously record and automatically save files every 15 minutes until either the memory card is full or the battery runs low.

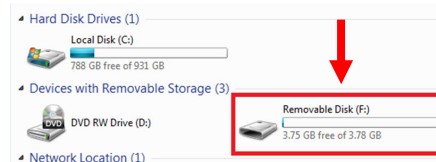
HOW TO USE NIGHT VISION

1. Put the keychain into **standby mode**
2. Push and hold the Night Lamp button for 3 seconds
 - First, the light will switch from red to red/yellow (to some it may look orange)
 - Second, the keychain will vibrate twice
 - The keychain is now in night vision mode
3. Push the On / Off Button to start recording
 - The red/yellow light will blink while recording
4. Push the On / Off Button to stop recording

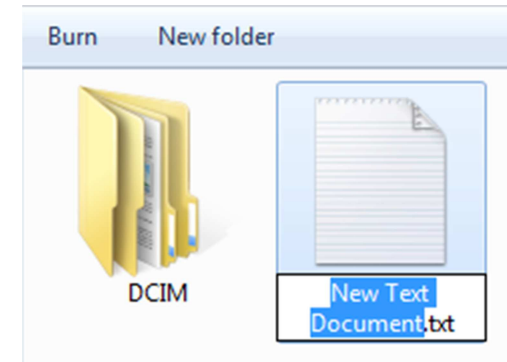
- The red/yellow light will be solid
5. Push and hold the Night Lamp button for 3 seconds
 - First, the light will switch from red/yellow to red
 - Second, the keychain will vibrate twice
 - The keychain is back in video **standby mode**

HOW TO RESET THE TIME AND DATE STAMP

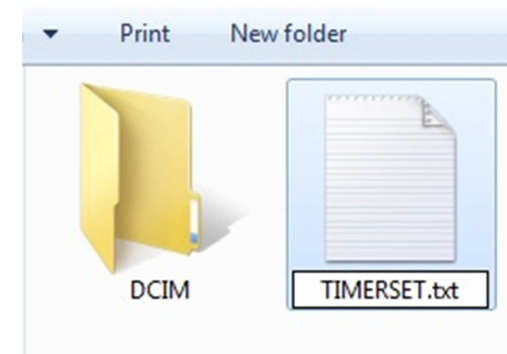
1. Plug the keychain into your PC using the USB cable
2. Locate “Removable Disk” inside the (My) Computer folder
 - Go to Start > Computer > Removable Disk



3. Open the Removable Disk drive
4. Right click with the mouse
5. Scroll down to “New”
6. Click “Text Document”
7. **Rename “New Text Document” as “TIMERSET”**
The title must be in all capital letters!



Before Step 7

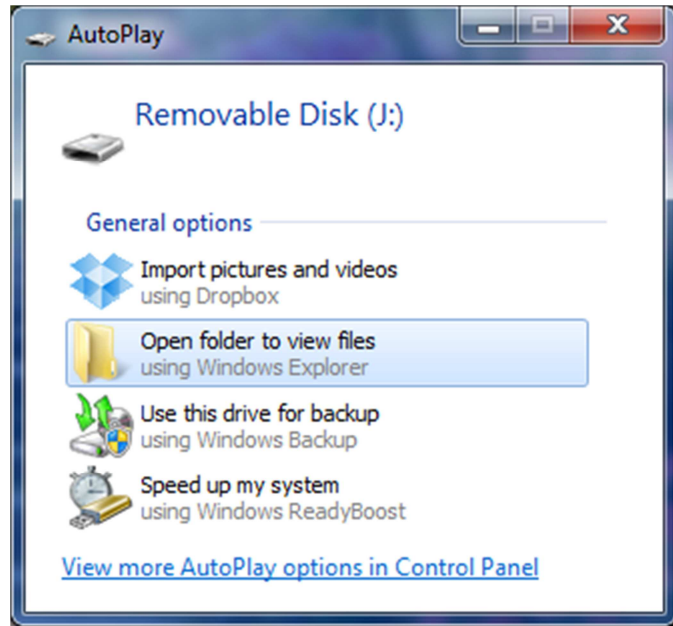


After Step 7

8. Open the text document
9. Enter the current date in Year-Month-Day format and enter the current time in military format; all without spaces
 - Example: If the date is April 16, 2013 and the time is 1:40:33PM
20130416134033 Y
10. Save the text document
11. Unplug the keychain from your PC

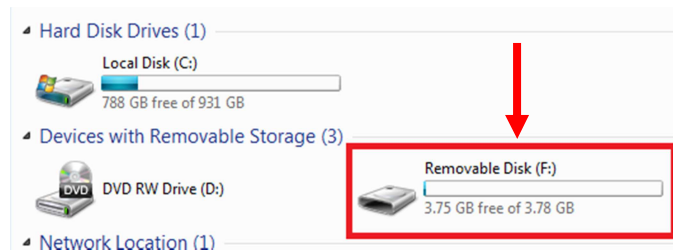
RETRIEVE THE FILES TO YOUR PC

1. Plug the device into your PC using the USB cable
2. Locate "Removable Disk" inside the (My) Computer folder
 - AutoPlay Removable Disk > Open folder to view files



Or...

- Go to Start > Computer > Removable Disk



3. Open the Removable Disk drive
4. Open the "DCIM" folder

5. Open the "100DSCIM" folder
6. Double click the file you want to view
 - VLC Players are recommended for watching videos

TROUBLESHOOTING

THE DEVICE WON'T TURN ON

- Charge the device for at least 4 hours before the first use.
- Make sure the charging cable is securely inserted into the device and into the power source.

THE DEVICE ISN'T CHARGING

- Replace the battery or charging cable.
- If you are charging via a wall power source, you may need to charge via your PC. The A/C adapter might be bad.

THE DEVICE HAS CRASHED

- You need to reset the device.

MY COMPUTER DOESN'T RECOGNIZE THE DEVICE

- Unplug the device from your PC and reboot the device.
- Unplug the device from your PC and reboot your PC.
- Try using a different USB slot on your PC.
- Replace the USB cable.

THE SOUND OR VIDEO IS UNCLEAR

- The device needs charging.

THE RED INDICATOR LIGHT IS FLASHING AND THEN THE KEYCHAIN SHUTS DOWN

- The battery is low
 - Any video or photographs will be saved automatically upon shutdown

THE BLUE INDICATOR LIGHT IS FLASHING AND THEN THE KEYCHAIN SHUTS DOWN

- The memory card is full
 - Any video or photographs will be saved automatically upon shutdown
 - You will need to cut and paste the files from the memory card into a folder on your PC

THE RED AND BLUE INDICATOR LIGHTS ARE FLASHING ALTERNATELY AND THEN THE KEYCHAIN SHUTS DOWN

- There is no memory card in the keychain

OTHER PROBLEMS

- Call our technical support at **770-694-6921**

SPECIFICATIONS

Video Resolution	1920*1080
Video Format	AVI
Frames per Second	20fps
Motion Detection	Yes
Photo Resolution	4032*3024
Photo Format	JPEG
Water Resistant	No
Battery Life	90 minutes
Type of Memory	MicroSD Card
Memory Capacity	Up to 64GB MicroSD Card
USB Interface	2.0 USB
Player Software	VLC (recommended)
Operating Systems	Windows me Windows 2000 Windows XP Windows 2003 Windows 7 Mac OS 10.4 Linux