

# QUICK INSTALLATION GUIDE

## Hi-Gain™ Wireless-G USB Dish Adapter

Windows Vista

Windows XP

Mac OS

**START HERE** ►►►



Part No. HWU8DD

# Pre-Installation

## Check Package Contents

- One Hi-Gain Wireless-G USB Dish Adapter
- One USB 2.0 Cable
- CD (Setup Drivers and User's Manual for Mac & Windows)
- One Quick Installation Guide for Mac & Windows

**Installation Instructions are divided into three sections:** (Windows **Vista**, Windows **XP**, and **Mac OS**)

- For Windows **Vista**, go to page **2**
- For Windows **XP**, go to page **9**
- For **Mac OS**, go to page **13**

*This document only contains quick setup instructions. For more settings, please refer to the User's Manual located on the CD.*

Support is available via website, email, and telephone:

Website: [www.hawkingtech.com/support](http://www.hawkingtech.com/support)

E-mail: [support@hawkingtech.com](mailto:support@hawkingtech.com)

Tel (Toll Free US & Canada): 888-202-3344

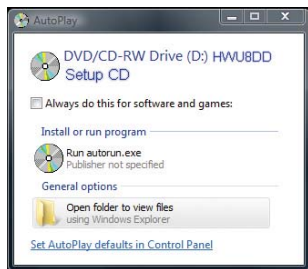
Tel (International): 949-790-0810

## Instructions for Windows Vista

**Important:** Do not connect the Wireless-G USB Adapter into the USB port until you have installed the driver from the CD and are instructed to do so. Otherwise, the Adapter may not operate properly.

### 1. Driver & Utility Setup:

a. Insert the Setup CD. Select Open Folder to view files option.



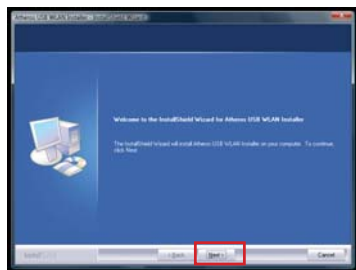
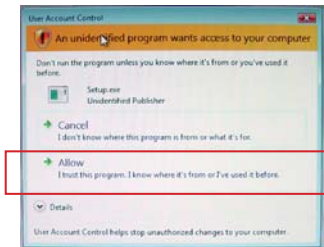
b. Select **autorun.exe**



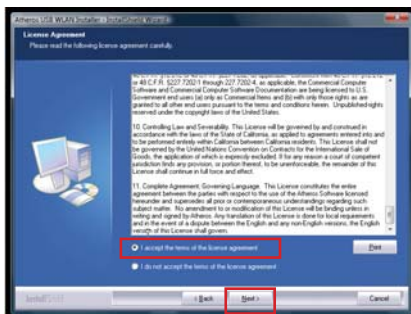
### 2. The Setup Wizard will load up. Select **START HERE (Windows Vista)**



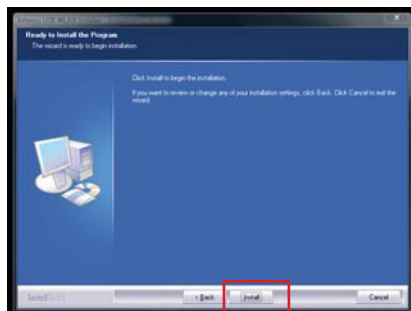
- 3. User Account Control:** Select **Allow** to continue. Then, wait for the InstallShield Wizard to guide you through the setup.



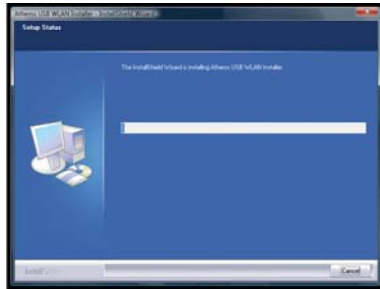
- 4.** Read through the License Agreement. Select "**I accept the terms of the license agreement**" and "**Next**".



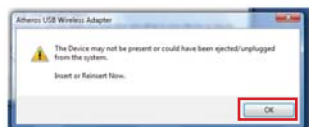
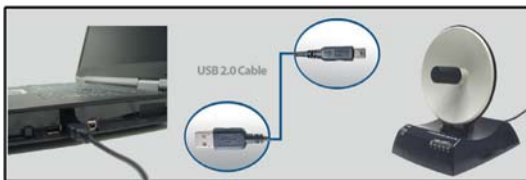
- 5.** Now, you are ready to install the program. Select **Install**.



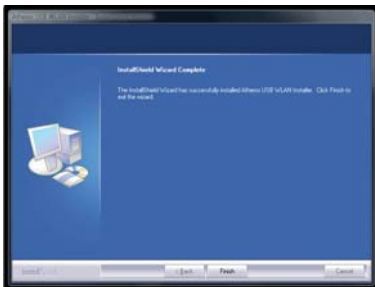
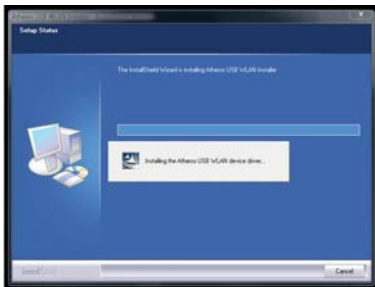
6. Please wait until the Install Wizard completes.



7. Plug -in the Wireless Dish Adapter using the using the included USB cable. Then click OK.

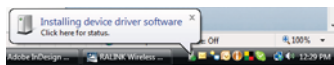


8. The InstallShields will proceed with driver installation. When completes, select Finish.

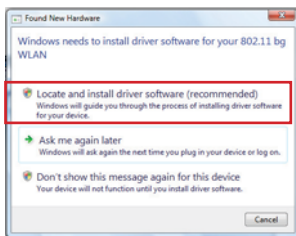


9. Now, **Plug-in** your HWU8DD Adapter **into an open USB port on your desktop or notebook.**

a. After plugging in the Adapter, Windows Vista will automatically search for new updates.



b. A Found New Hardware screen may pop up at this point. If so, select **Locate and Install Driver software (recommended).**

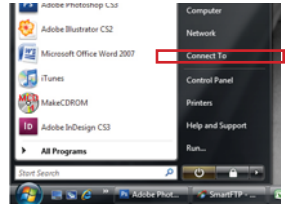


## 10. Connect to a Wireless Network:

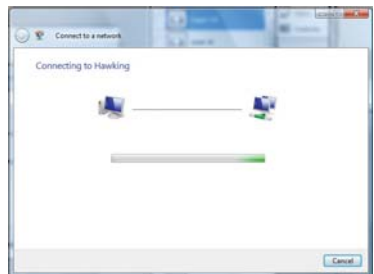
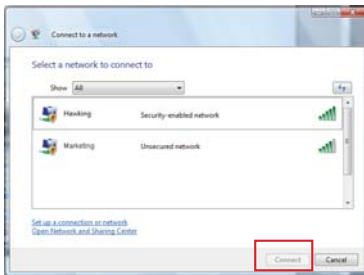
a. Double click on the bottom "network icon" or



b. Right click on the Start menu and select "Connect To".

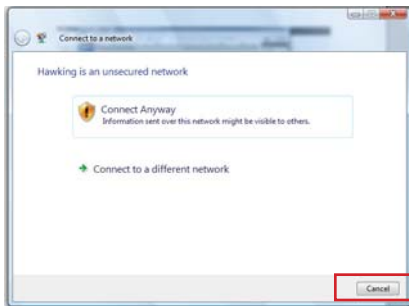


11. Select a Network and click **Connect**. Please wait until the adapter connects.

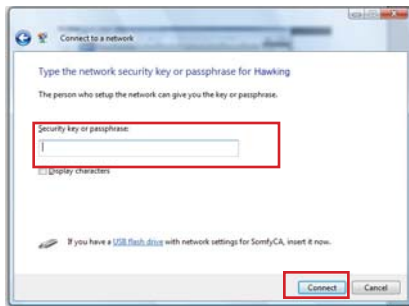


If you are connecting to an **unsecured network**, go to Step 12.  
If you are connecting to a **Security-enabled Network**, go to Step 13.

**12. Unsecured Network:** Select **Connect Anyway** to continue on with an unsecured network. Then, go to Step 12.



**13. Security-enabled Network:** Type in the network security key or passphrase. If you do not have the security key or passphrase, please obtain it from your network administrator.





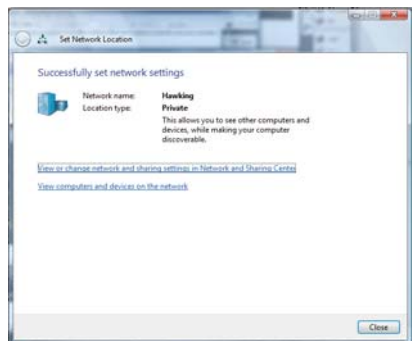
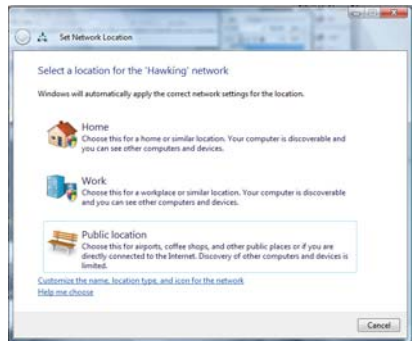
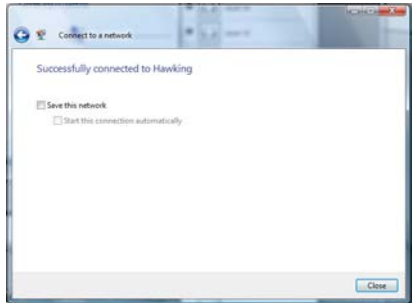
- 14.** You are now connected to a wireless network. To start using your wireless network, select **Close**. To save this specific network for future access, select **Save this network**.

## Save this network:

Select a location or you may customize the name and location type, etc.

**Close** the Set Network Location when you are done.

**Congratulations!**  
**You have completed the Windows Vista Installation.**



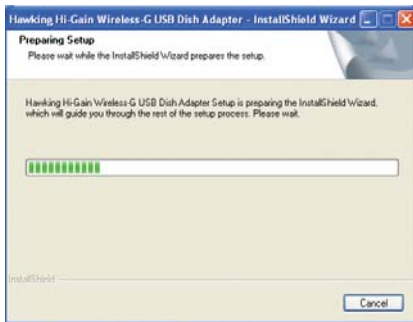
## Instructions for Windows XP

**Important:** Do not connect the Wireless-G USB Adapter into the USB port until you have installed the driver from the CD and are instructed to do so. Otherwise, the Adapter may not operate correctly.

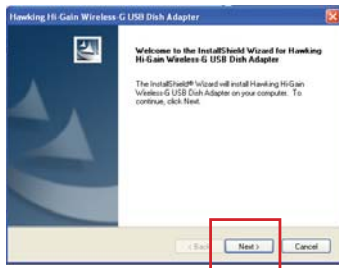
**1. Driver & Utility Setup:** Insert the Setup CD. The Setup Wizard will load up automatically, select **START HERE** (Windows 98SE, 2000, ME, XP)



Select Run to continue installing the driver.



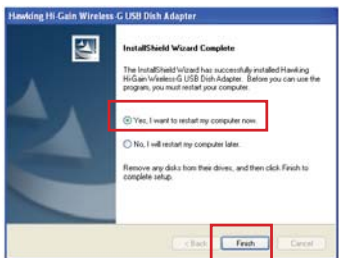
## 2. Select Next to continue



## 3. Choose a destination to install the driver. Your system will select a default folder in your system. If you prefer a different location please do so. Otherwise, select Next.



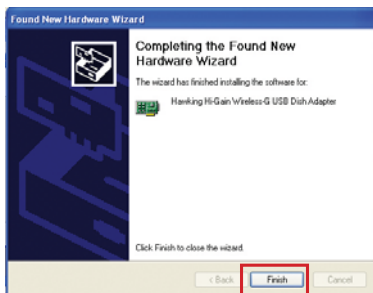
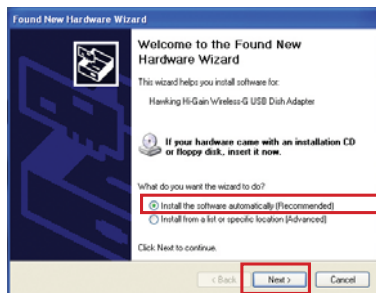
## 4. You have completed the first part of driver installation. Restart your computer when prompted to do so.



## 5. After restarting your system, connect the USB Dish Adapter to your laptop or desktop using the included USB cable.



**6.** Your system should automatically detect the new hardware. Select **Install the software automatically [Recommended]** and **Next**. The wizard will automatically search and install the software. Select **Finish** when the Wizard completes the installation.



## Using the Hawking Wireless Utility

**Important:** For users with Windows XP, the default Wireless Configuration Utility is set to Microsoft Wireless Configuration Tool. If you wish to use Hawking's Wireless Utility, you may need to disable the Microsoft Windows Utility.

**7.** Open the **Hawking Wireless Utility** by double-clicking the **plus sign icon** in your tool bar, located on the right hand corner of your screen or right click on the Start menu and select **"Hawking Wireless Utility."**



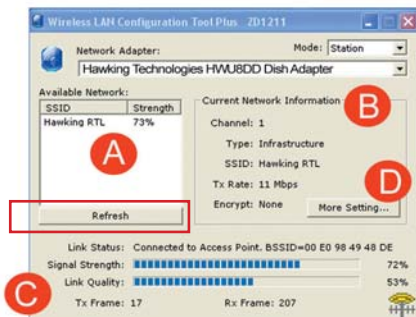
## 8. Hawking Wireless Utility Overview

**A:** Displays the detected wireless network in your area and the signal strength of each detected network. If your network is not listed, make sure your wireless network is correctly set up.

**B:** Displays detailed information about the associated wireless network.

**C:** The Signal Strength and Link Quality bars show the connection quality of your HWU8DD.

**D:** More Setting option will give you access to more advanced features and tools for HWU8DD.  
(Note: This Quick Installation Guide is intended for quick setup with available wireless networks. If you need to connect to a specific network that is not listed and need to manually set up the IP Address, please refer to the manual on the CD.)



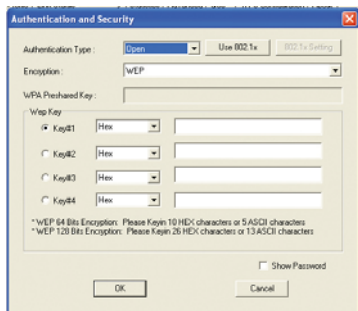
**9.** To connect, click **Refresh** and double-click the name (SSID) of the network.

**note:** Make sure your wireless network (Access Point or Router) is up and running. You will also need to know the SSID (the name of your network). To connect to a security-enabled network, you will need to have the network security key or passphrase. If you do not have the security key or passphrase, please obtain it from your network administrator.

**10.** In the Authentication and Security window, please enter in your network's security information. If you don't have this information, please request it from your network administrator who set up your network.

## WEP Encryption

- a. Select 64-bit or 128-bit
- b. Passphrase - this is case sensitive and contains no more than 16 alphanumeric characters. ( Must be the same as your network).
- c. 64-bit WEP key: exactly 10 hexadecimal characters and must be the same as your network.  
128-bit WEP key: exactly 26 hexadecimal characters and must be the same as your network.



If your network is set to ASCII, go to the Authentication Type and select ASCII from the drop down menu.

## WPA Encryption

- a. Encryption Type: Select TKIP or AES
- b. All Encryptions must match the selected network's encryption settings.
- c. Pre-shared Key: Should be 8-63 characters and must match your network.

## WPA2 Encryption

- a. Enter Pre-shared Key (should be 8-63 characters and must match your network). After you are done entering the selected Network Encryption, click OK and proceed.

**Congratulations! You have completed the Windows XP installation.**

# Instructions for Mac

## Important:

1) Do not connect the Wireless USB adapter to your computer until you have installed the driver from the CD and are instructed to do so. Otherwise, the adapter may not operate correctly.

2) Installation software requires you to restart your computer, be sure to save all your work before installation.

**Note:** The HWU8DD only supports Mac OS X 10.3 and 10.4. Depending on your Mac OS version, your installation screens may look different than the screens show in this QIG.

1. Insert Setup CD. When the folder opens up automatically, double click the icon titled **"START HERE"**.

If this window does not open up automatically, go to your Desktop and click on the CD icon.



## 2. Next, select the appropriate Mac OS X to install.

Panther ~ Mac OS X 10.3

Tiger ~ Mac OS X 10.4



If you are uncertain about which Mac OS you are operating on, click the APPLE icon in the upper left-hand corner of the finder's menu bar and select "About this Mac" and check your current Mac OS X version.



## 3. The Introduction Screen will welcome you to the HWU8DD Wireless-G Dish Adapter Installer, select "Continue."

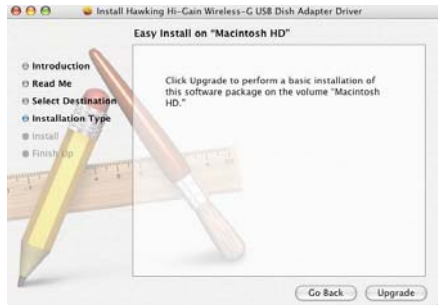




4. Select a destination for the driver. Typically, the default destination is the Macintosh HD. Select "Continue"



5. Select **Install** to continue. (Note: some may state Upgrade. Select Upgrade, if the Install option is not available.)



If your computer is password protected\*, enter the password and click OK. If it is not password protected, leave the password field blank and click OK to continue.

\*If you do not have this information, please contact the owner/admin of this computer for Name and Password.



6. At this point, if you have not saved all your work, please do so. Then, select continue to Install.



7. Please wait for the installation process to complete. Select Finish when it is done and your computer will reboot.



## CONNECTING TO YOUR WIRELESS NETWORK

After your computer reboots, insert the HWU8DD Dish Adapter into an available USB port

**Note:** To make sure the HWU8DD Adapter works properly, you must turn off any previously installed wireless card (including the built-in airport card.)

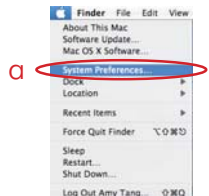


To turn the airport card off, locate the airport wireless icon at the top right hand corner and select "Turn Airport Off"



8. Set up your Wireless Network you desktop or laptop. This is required only if you are installing the HWU8DD/HWU8DDA for the first time.

8a. Click on the APPLE icon in the top left-hand corner and then select SYSTEM PREFERENCES.



8b. From the menu that appears, double click the NETWORK icon to begin enabling your Hawking wireless device before using the wireless utility.

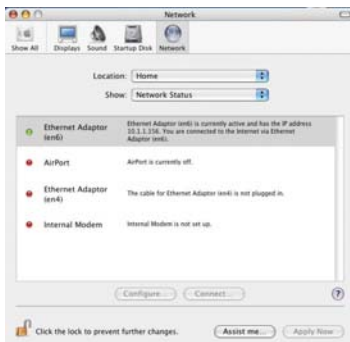
b



8c. Your computer should automatically detect the USB Wireless-G adapter by showing a pop-up window stating “New Port Detected”. Be sure to note the port number i.e. Ethernet Adapter (en#). Click **OK** to continue.



If the “New Port Detected” screen does not appear, you will need to direct your system to use the newly installed Wireless-G Adapter manually. Go to System Preferences, select Network. Click on the “Show” field , select Ethernet Adapter (en#). (Note: # can be any number - it does not have to be (en3) as shown in the picture.)



**Double click on the Ethernet Adapter.**



As a default setting, the Hawking Wireless Utility (WLAN) should automatically load on your Dock when you insert the Hawking Hi-Gain Adapter. However, if the WLAN icon does not automatically load up, go to **FINDER** → **APPLICATION** → **UTILITY**, and find the WLAN in the UTILITY folder. Double-click on the WLAN icon to start the Wireless Utility.

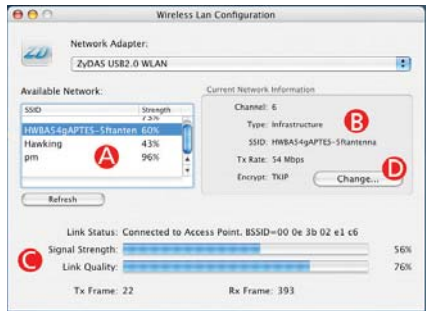
## Wireless Utility Functions:

**A** Displays the available wireless networks in your vicinity and the signal strength information of each network. To connect to a network double-click the name of the network. The “Refresh” button will rescan for available networks. If your network does not appear, check to see if your network set up correctly.

**B** Displays detailed information about the associated wireless network.

**C** The Signal Strength and Link Quality bars show the connection quality of your HWU8DD to the wireless network. It is best to rotate your antenna until you find a position with the strongest signal.

**D** The CHANGE button will give you access to more advanced features and tools for the HWU8DD. (See the next page).



## ADVANCED / SECURITY SETTINGS

(For more advanced features and settings please view the users manual)

**GENERAL SETTINGS** - You may manually input your network settings here. It is recommended to use the automatic settings.

**SECURITY** - If your wireless network requires a security key you may enter it in the Encryption Settings tab. If you are unsure what your security key is, please contact your network administrator. The HWU8DDA supports a wide range of security levels. (WEP 64/128/256 and WPA)

**ADVANCED SETTINGS** - It is not recommended to adjust these settings. Please refer to the manual if you wish to do so.



Congratulations! You have completed the configuration for the HWU8DD Hi-Gain Wireless-G USB Dish Adapter.



### TECHNICAL SUPPORT

Email: [support@hawkingtech.com](mailto:support@hawkingtech.com)  
Website: [www.hawkingtech.com/support](http://www.hawkingtech.com/support)  
Tel (Toll Free US & Canada): 888-202-3344  
Tel (International): 949-790-0810

[WWW.HAWKINGTECH.COM](http://WWW.HAWKINGTECH.COM)

### PRODUCT REGISTER

<http://www.hawkingtech.com/registration.php>

### RMA INFORMATION

<http://www.hawkingtech.com/rma.php>

### SALES INFORMATION

[sales@hawkingtech.com](mailto:sales@hawkingtech.com)

Hawking is a registered trademark of Hawking Technologies, Inc. ©2008 Hawking Technologies, Inc. All rights reserved. Other brands and product names are trademarks or registered trademarks of their respective owners. Apple, Mac, and Airport are registered trademarks of Apple Computer, Inc. No affiliation is implied or expressed.