

USER'S MANUAL

USB 1.1 Multi Card Reader



CR71X

<u>Index</u>	<u>Page</u>
Introduction.....	1
Features.....	1
Specification.....	1
Requirements.....	2
Package contents.....	2
<u>Chapter 1</u>	
Hardware description.....	3
<u>Chapter 2</u>	
Driver Installation.....	4

Introduction :

The Multi Card Reader/Writer support the SD/MMC/ MS/CFI,II/MD/SM Memory Cards.

Features :

USB	<ul style="list-style-type: none">✧ Support USB 1.1.✧ USB and ACPI compliant.✧ Support USB Full-speed at 12 Mbps.✧ Truly Plug & Play automatic system configuration.
OS	<ul style="list-style-type: none">✧ Windows 98SE, Windows 2000, Windows ME, Windows XP✧ Mac OS 10.2.X
Power	<ul style="list-style-type: none">✧ Only USB BUS power, no need other power supply.

Specification :

Interface	<ul style="list-style-type: none">✧ Universal Serial Bus (USB) Revision 1.1 device.
Function	<ul style="list-style-type: none">✧ Supports Secure Digital (SD) Card.✧ Supports Multi Media Card (MMC) Card.✧ Supports Memory Stick (MS) Card. (no support MS-PRO)✧ Supports Compact Flash (CF) Card, Type I (CF).✧ Supports IBM Micro drive (MD)Type II (CF+).✧ Supports Smart Media (SM) Card.✧ Supports Hot-Swapping
Connectors	<ul style="list-style-type: none">✧ One CF/MD socket.✧ One SD/MMC socket.✧ One MS socket.✧ One SM socket.
Cable	<ul style="list-style-type: none">✧ One USB extension cable.
Transfer Rate	<ul style="list-style-type: none">✧ USB transfer rate: Full-speed at 12Mb/sec.
LED	<ul style="list-style-type: none">✧ Power LED✧ Active LED
Power	<ul style="list-style-type: none">✧ DC +5.0V from USB cable directly.
Enclosure	<ul style="list-style-type: none">✧ Plastics.
EMI	<ul style="list-style-type: none">✧ CE & FCC.

Requirements :

- ✧ IBM PC/AT Compatible/Mac G4
- ✧ USB Host card or USB HUB device.
- ✧ Windows 98SE, Windows ME, 2000 or Windows XP operating system.

Packing contents :

Please make sure that this package includes the following items.

Item	Quantity
USB 1.1 multi Card Reader/Writer	One
Software CD Driver include User's Manual	One
USB Extension cable	One/None

Chapter 1

Hardware Description :

Active LED : Device connected and inactive LED.

Power LED : Power LED.

USB Cable : The interface connects to the USB port of the computer.

Sockets view :



1. CF/MD Reader/Writer

3. MS Card Reader/Writer

2. SM Reader/Writer

4. SD/MMC Reader/Writer

1. Compact Flash (CF) and IBM Micro drive (MD) Card Reader/Writer Socket.
2. Smart Media (SM) Card Reader/Writer Socket.
3. Memory Stick (MS) Card Reader/Writer Socket.
4. Secure Digital (SD) and Multi Media Card (MMC) Card Reader/Writer Socket.

Chapter 2

Driver Installation :

Supported OS:

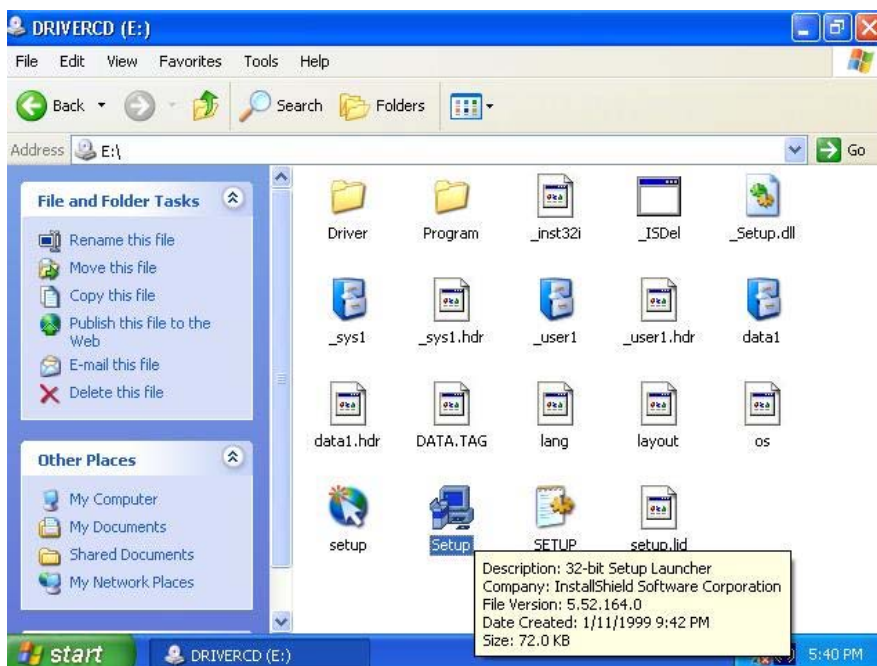
Windows 98SE, Windows ME, Windows 2000, Windows XP (all windows need to install driver)

Windows OS 98SE OR ABOVE:

1. Turn On your computer, system will auto detect the multi Card Reader and attempt install driver. **Do not choose click “Next” icon**, select “Cancel” as below:



2. Please double click “SETUP “Icon as below:



3. You will see the view of installation, please click “NEXT”



4. You will see the “INSTALL USB READER DRIVE “, please click “NEXT”.



5. You will see this message as below, please click “Continue Anyway”



6. You will see the view of installation is ready, please click “Next”



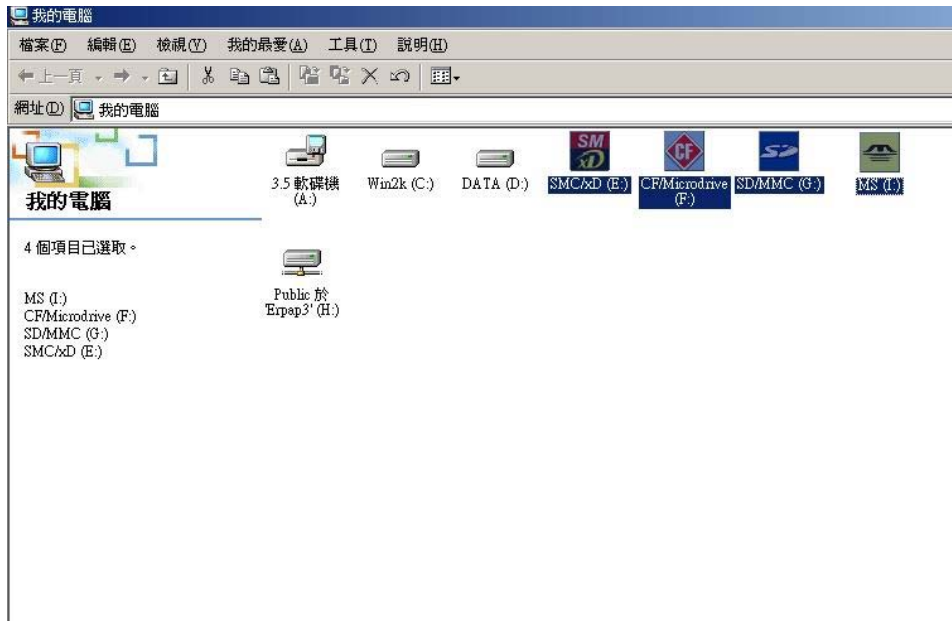
7. Windows start to install driver, then it will ask you to restart as below.



8. The Installation steps are finished, you can select cancel or others instruction as below: (For CF/MS/SD/SM are the same)

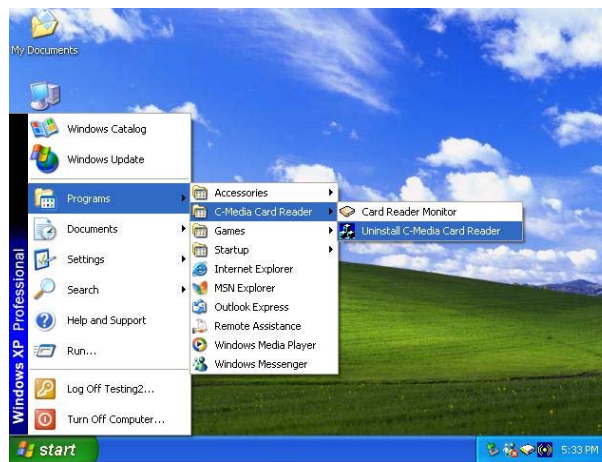


9. Please plug-in memory card reader and it will appear 4 new icons for CF/SD/MS/SM(XD) On "MY COMPUTER" as below view:



Driver Uninstallation :

1. Please entry the directory as below view:
The path is “Start \Program\ c-Media card reader\un-install C-media card reader” .



2. You will see windows ask you to be sure
“remove C-media USB card reader”



3. Windows will reboot ,please click ok.



Driver Installation :

• Supported OS:

Windows 98SE, Windows ME, Windows 2000, Windows XP
(all windows are need to install driver)

1. Turn On your computer, system will auto detect the multi 6in1 Card Reader and attempt install driver. Do not choose click "Next" icon, select "Cancel".
2. Please double click "SETUP" Icon.
3. You will see the view of installation, please click "NEXT"
4. You will see the "INSTALL USB READER DRIVE", please click "NEXT".
5. You will see the "talking block" message, please click "Continue Anyway"
6. You will see the view of installation is ready, please click "Next"
7. Windows start to install driver, then windows will ask you to restart when install finally.
8. The Installation steps are final.
9. You can insert memory cards and start to use the card reader and it will appear new icons for CF / SD / MS / SM in "MY COMPUTER".