



SharePoint Remote List Viewer web part





Copyright © 2005-2011 KWizCom corporation. All rights reserved.

Company Headquarters

KWizCom
50 McIntosh Drive, Unit 109
Markham, Ontario
ON L3R 9T3, Canada

E-mail: info@KWizCom.com

Web site: <http://www.KWizCom.com>

Sales

E-mail: sales@KWizCom.com

Telephone: +1-905-370-0333



Table of Contents

Introduction	4
Product Overview _____	5
Key Features _____	6
Installation	7
Software prerequisites _____	7
Installation Procedure _____	7
Post Installation _____	9
Component Activation	12
Administrator Guide	18
Introduction _____	18
Web Part Properties & Configuration Options _____	18
FAQ	20
What's the purpose of the Remote List Viewer web part? _____	20
Does it work on WSS/MOSS? _____	20
Do I have to install anything on my company's client-PCs? _____	20
How to hide the remote list's toolbar from the Remote List Viewer web part? _____	20
Version Release Notes	21
Version History _____	21
This Version's Known Issues/Limitations _____	21
Technical Support	22



Introduction

KWizCom Remote List Viewer web part is the best solution to display lists that are located on other SharePoint sites.

Remote List Viewer web part supports MOSS2007/WSS3.0 and SharePoint 2010 server/foundations.

This document provides all the information needed to install, evaluate and deploy this KWizCom product:

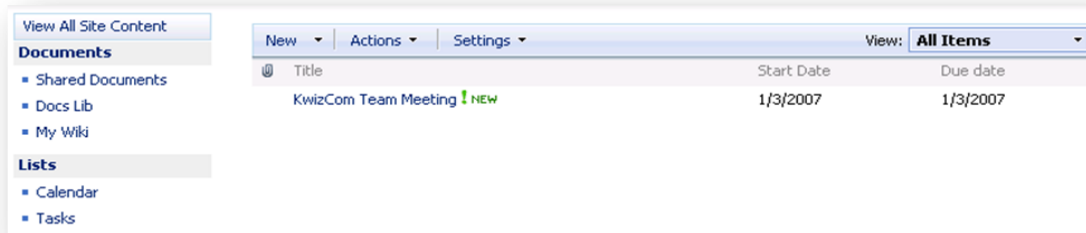
1. Product overview
2. Installation guide
3. Component activation
4. Administrator guide
5. FAQ
6. Version release notes

Product Overview

SharePoint, by default, can't present lists web parts from other sites. For example, employees from one department can't view a list that is located on other departments' SharePoint sites.

When using the **KWizCom Remote List Viewer web part** in your SharePoint site, you can display remote lists that are located on other SharePoint sites, and even on other SharePoint servers (on the same server farm).

The Remote List Viewer web part looks like the regular SharePoint List web part:



Also, you can manage the displayed items (edit, view properties etc.) - same way as with the regular SharePoint list web part.

In addition, the Remote List Viewer web part displays the remote list's available views, enabling users to toggle between views (not available with the SharePoint list web parts).



Key Features

Feature	KWizCom Remote List Viewer	SharePoint 2007 out-of-the-box	SharePoint 2010 out-of-the-box
View and manage SharePoint lists/libraries located on other sites/web application/servers (on the same farm).	✓		
Enable users to toggle between views of the remote list.	✓		
Hide the toolbar of the remote list	✓		



Installation

Software prerequisites

Server Requirements

1. SharePoint 2007 / WSS 3.0 or
2. SharePoint Server/Foundation 2010

Client PC Requirements

1. Windows Vista/7
2. Microsoft Internet Explorer 7+, Mozilla Firefox (Latest version), Google Chrome (Latest version).

Installation Procedure

SharePoint 2007

The Remote List Viewer web part must be installed both on the SharePoint server where it will be displayed and on the SharePoint server/s where the remote list/s is located.

1. Log in using SharePoint administrator account to your SharePoint server.
2. Unzip the KWizCom Remote List Viewer web part zip file on your WSS/MOSS server.
3. Double-click the .msi file in order to begin the web installation.
 - When the installation process is complete it will recycle all application pools automatically.



SharePoint 2010

1. Log in as SharePoint administrator account to your SharePoint front-end server.
2. Download the product's latest evaluation version (zip file) from KWizCom's internet web site. This evaluation version is fully functional for 30 days.
3. Extract the zip file content on your local disk.
4. You will find 2 .WSP files: The product's WSP file and KWizCom foundation WSP file.

If you don't already have the KWizCom Foundation latest version installed - install and deploy the KWizCom Foundation .WSP file in a farm level (All web applications) by using the standard SharePoint's deployment tools (stsadm, powershell, Central admin).

IMPORTANT:

You need to install KWizCom Foundation in a global scope, including in the Central Admin's web application.

Install and deploy the product's .WSP file in the required level (Farm, web application) – according to your needs, by using the standard SharePoint's deployment tools (stsadm, powershell, Central Admin).

Remark: Installation and deployment of standard SharePoint .WSP packages are described in Microsoft website:

[http://technet.microsoft.com/en-us/library/cc263384\(office.12\).aspx](http://technet.microsoft.com/en-us/library/cc263384(office.12).aspx)

<http://technet.microsoft.com/en-us/library/ff621081.aspx>



Post Installation

SharePoint 2007

1. After completion of the installation, you will see a new KWizCom entry in Windows **Start -> All Programs -> KWizCom** containing the following programs:



About Remote List Viewer web part

Display General Information about the component.



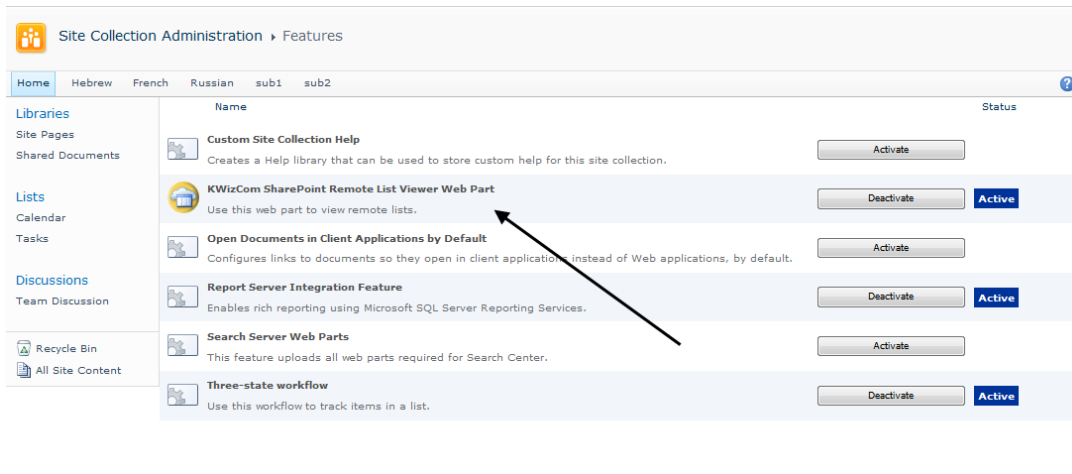
Activate Remote List Viewer web part

This utility enables you (the SharePoint Administrator) to activate the downloaded evaluation version.

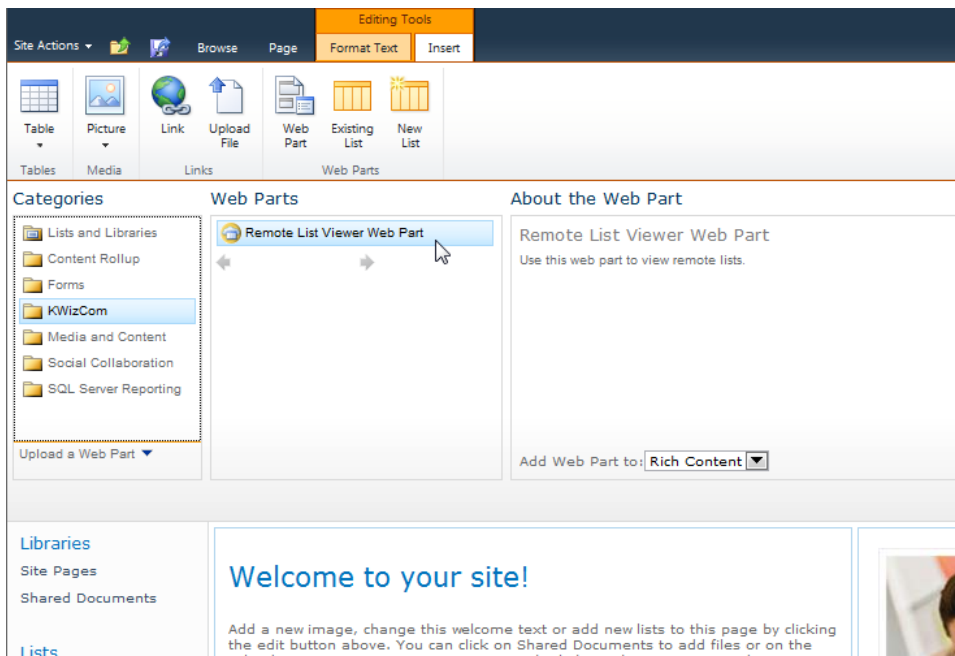
2. When you browse your SharePoint Portal/ Windows SharePoint services site, a new Remote List Viewer Web Part will be available for you under "Miscellaneous" group in the "Add Web Part" dialog or under "Server gallery" in the "Advanced Web Part Gallery".

SharePoint 2010

1. After completion of the installation you will need to activate the "KWizCom Remote List Viewer web part" site collection feature in the site collections where you want the web part to be used:



- Once the site collection feature has been activated, you will be able to use the SharePoint Remote List Viewer web part, that will be available in the web part gallery, under the “KWizCom” category:





Un-installation

SharePoint 2007 server

1. Log in using SharePoint administrator account to your SharePoint front-end server.
2. Go to Control Panel and double-click Add or Remove Programs.
3. Select product entry and click Remove button.
4. Click Yes to approve the removal of the component.
5. Once the product was un-installed, close the Add or Remove Programs screen.

SharePoint 2010 server

1. Retract and remove the solution using SharePoint central admin or by using stsadm/powershell command line.



Component Activation

KWizCom components are available for evaluation prior to purchase. This way you can try our components and verify that they indeed meet your needs. An evaluation version for each KWizCom component contains all features of the component's production version. The only difference is that an evaluation version is time-limited, and will operate for a period of one month.


Once you decide to order a KWizCom component, you will need to follow the following steps:

SharePoint 2007

1. Order the component on the KWizCom website – www.KWizCom.com.
2. Send us the installed evaluation version's *product Code* (you will see the product Code on the "About" product page:



Please use the [Activation Request web form](#), on KWizCom web site to send us your product code.

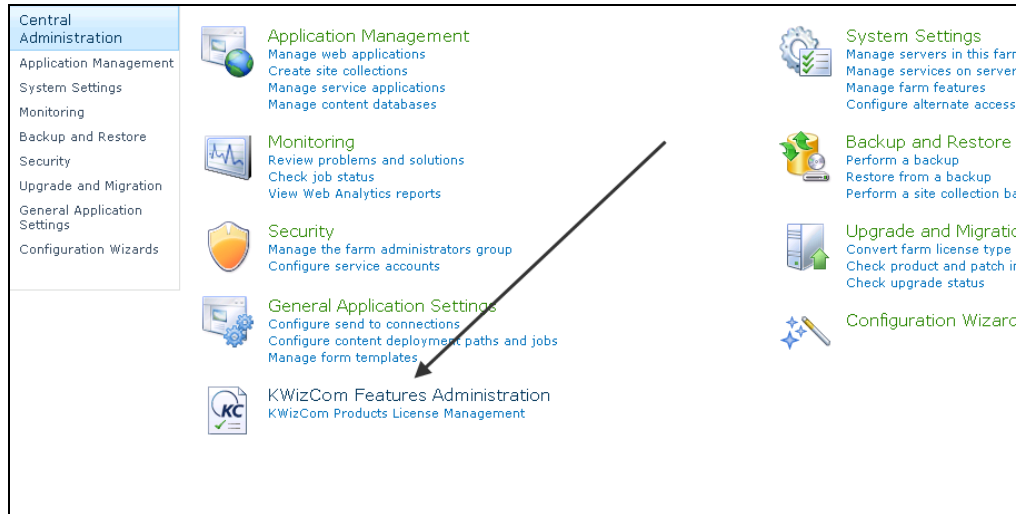
3. Get the component activation key – this key will be sent to you by email once your order is processed.
4. Activate your installed evaluation version -
click **Start -> All Programs -> KWizCom -> SharePoint Remote List Viewer Web Part->**  **Activate SharePoint Remote List Viewer Web Part**

SharePoint 2010

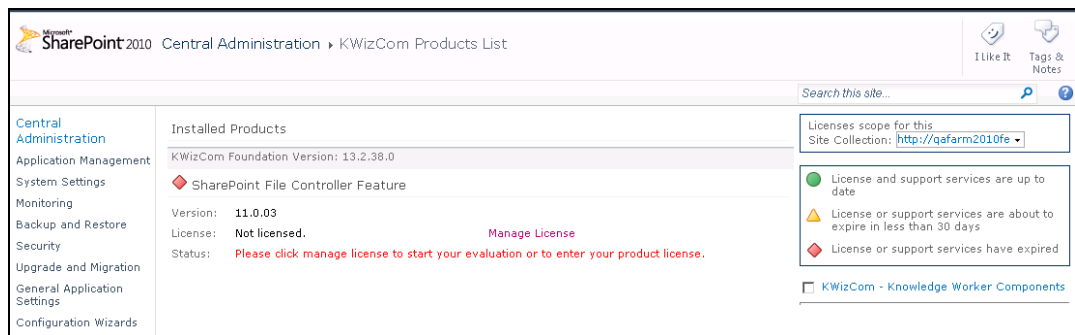
1. Order the product on the KWizCom website – www.KWizCom.com, or contact our sales team at sales@kwizcom.com.

2. After the order was made, you can activate your installed evaluation version. Activation is done by the following steps:

a. Open SharePoint Central Admin. On the main “Central Administration” page, you will see the “KWizCom Features Administration” icon:



b. Click the KWizCom Features Administration icon. You will be redirected to a page that allows you to manage all your installed KWizCom products’ licenses:



- c. Click the “Manage License” link next to the product that you wish to activate. You will be redirected to that product’s license management page:

Product Information	
Name:	SharePoint File Controller Feature
Version:	11.0.03
Farm License	
Farm license applies to all site collections in your farm.	
Product Code:	Not requested Request product code and start your evaluation license now!
Web application or site collection license management	
If you have a license for one web application or site collection, you can enter it here. Simply choose the site collection you wish to activate the license on from the picker and enter the I	
Site Collection:	http://qafarm2010fe ▾
Use the form below to activate SharePoint File Controller Feature on one the selected site collection or web application only.	
Web Application License	
Web application license applies to all site collections under the same URL, for example: http://sharepoint, http://sharepoint/sites/sales etc...	
Product Code:	Not requested Request product code and start your evaluation license now!
Site Collection License	
Site collection license applies only to one specific site and it's sub sites.	
Product Code:	Not requested Request product code and start your evaluation license now!

- d. Click on the “Request product code and start your evaluation now” link, under the required license type (Farm, Web application, Site Collection).
A product code will be generated and displayed as in the following screenshot:

Product Information

Name: SharePoint File Controller Feature
Version: 11.0.03

Farm License

Farm license applies to all site collections in your farm.

Product Code: TNWV07J8[07QZMJUVEVHJ8MMEVH7QMM57885VVV5JVM-.5VQMUM.MM]MVNXJX [Copy to clipboard](#)

Activation Code: [Activate now!](#)

License Notifications: [Update](#)
Optionally, enter your email address to get notified when your license is exceeded or about to expire. To enter more than one email address, separate each address with a comma.

License type: Evaluation
Expiration: Thursday, November 18, 2010

Web application or site collection license management

If you have a license for one web application or site collection, you can enter it here. Simply choose the site collection you wish to activate the license on from the dropdown menu.

Site Collection: <http://qafarm2010fe>

Use the form below to activate **SharePoint File Controller Feature** on one of the selected site collection or web application only.

Web Application License

Web application license applies to all site collections under the same URL, for example: http://sharepoint, http://sharepoint/sites/sales etc...

Product Code: **Not requested** [Request product code and start your evaluation license now!](#)

Site Collection License

- e. Copy the product code.
- f. Browse the *Product Activation Request* page on KWizCom’s web site: <http://www.kwizcom.com/ProductReg>.

Product Activation Request

In order to deactivate a product please [click here](#).

This Product Activation Form is used to get your product activation key after you have purchased the product.

Please fill out the following form. Once we get your product activation request, a product activation key will be sent to you by email, along with the activation process description.

*Customer Name:

*E-mail address:

*Share-It Order/Invoice Number:

*Product Code:

*License Type:

Copy your *Product Code* into the “Product Code” field, and after you fill-out all other form fields, click “Send Activation Request” button.

- g. Once your order is confirmed, you will receive the Activation Code for your product by email.
- h. Copy the activation code into the "Activation Code" field in the product's license management page and click "Activate now!" link.

Product Information	
Name:	SharePoint File Controller Feature
Version:	11.0.03
Farm License	
Farm license applies to all site collections in your farm.	
Product Code:	TNWW07J8[07QZMJUVEVHJ8MMEVHPQMM57885VVVV5JVM-.5VQMUM.MM]MVNXJX Copy to clipboard
Activation Code:	<input type="text"/> Activate now!
License Notifications:	<input type="text"/> Update
Optionally, enter your email address to get notified when your license is exceeded or about to expire. To enter more than one email address, separate them with commas.	
License type:	Evaluation
Expiration:	Thursday, November 18, 2010
Web application or site collection license management	
If you have a license for one web application or site collection, you can enter it here. Simply choose the site collection you wish to activate the license for.	
Site Collection:	http://qafarm2010fe ▼
Use the form below to activate SharePoint File Controller Feature on one the selected site collection or web application only.	
Web Application License	
Web application license applies to all site collections under the same URL, for example: http://sharepoint, http://sharepoint/sites/sales etc...	
Product Code:	Not requested Request product code and start your evaluation license now!
Site Collection License	
Site collection license applies only to one specific site and it's sub sites.	

That's it! Your product is now fully activated.

Administrator Guide

Introduction

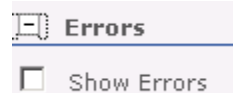
When you browse your SharePoint server/ Windows SharePoint services site, a new Remote List Viewer web part can be added from "Miscellaneous" group in the "Add Web Part" dialog or from "Server gallery" in the "Advanced Web Part Gallery".



Web Part Properties & Configuration Options

The following sections provide details about each category.

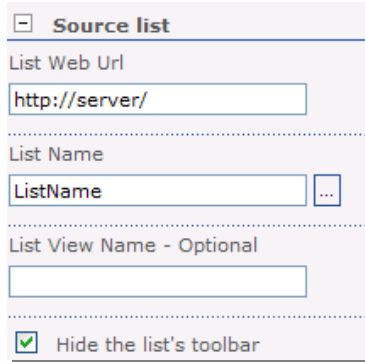
Errors



This section provides you with the option to show errors when the web part is not working properly (for debug & support purposes).

Check this option to view error details and uncheck it if these details do not need to be shown.

Source List



The screenshot shows a configuration form titled "Source list" with a collapse icon. It contains the following fields and options:

- List Web Url:** A text input field containing "http://server/".
- List Name:** A text input field containing "ListName" and a browse button "...".
- List View Name - Optional:** An empty text input field.
- Hide the list's toolbar:** A checked checkbox.

This section includes Remote List connection details:

- List Web URL- SharePoint List web address - enter the URL without the List Name.
- List Name - SharePoint List name - enter the full List name.
- List View Name (optional) - Remote List View Name - here you can enter a specific List View name to show in default.
- Hide the list's toolbar (optional)- check this checkbox if you want to hide the remote list's toolbar.



FAQ

What's the purpose of the Remote List Viewer web part?

The KWizCom Remote List Viewer web part enables you to display on your site/s lists that are physically located in other sites and even other SharePoint servers (located on the same farm).

Does it work on WSS/MOSS?

The KWizCom Remote List Viewer web part works both on WSS 3.0 / MOSS 2007 and on SharePoint Server/Foundation 2010.

Do I have to install anything on my company's client-PCs?

No. KWizCom Remote List Viewer web part is a server installation.

How to hide the remote list's toolbar from the Remote List Viewer web part?

In the configuration window of KWizCom Remote List Viewer - open the Source list category and check the "Hide the list's toolbar" checkbox.

Does the add-on work with SharePoint 2010 server/foundation?

Yes.



Version Release Notes

Primary Software	
Version	3.2.00 (SharePoint 2007) 13.2.00 (SharePoint 2010)
Base version	3.1.10
Release date	Feb-16-2011
Sub-Modules	
Module	Version
n/a	n/a

Version History

CR #	Description
Version 3.1.00, 13.2.00 – Feb-16-2011	
1321	Support in-place upgrade to SharePoint 2010.
Version 3.1.10, 13.1.10 – Jan-04-2011	
1183	Include the new KWizCom per-user activation model for SharePoint 2010
Version 3.1.00, 13.1.00 – Sep-30-2010	
310	Add property "Open links in new window".
376	Support WCAG standard.
377	Support SharePoint 2010 RTM.
Version 2.3.00	
12	Bug fix: Remove border and unnecessary scroll from list view
Version 2.2.00	
1	"Hide list's toolbar" option added



Technical Support

You can obtain technical support using any of the following methods:

The KWizCom Web site

The KWizCom website at www.KWizCom.com contains the most updated valuable information, including:

- Answers to frequently asked questions (FAQ's) about our products – usability and technical questions.
- Product updates, which provide you with bug fixes and new features.

The Web Form

For technical support through the Internet, please fill in our [support web form on our web site](#)

For more information on technical support, please review our [support programs page](#).