

BEAM 200W SHARPY 5R



User Manual

Please read this user manual carefully before operate it

At first , thanks for purchase our pro lighting products.

This user maunal include how to safely for installations and use of the important informations. Please carefully read the requirements of installation and operation . At the same time, please return this user manual properly preserved, for a rainy day.

The light is very good, humanization and industrial design perfect combination, attractive appearance, fluent.The lamp body of aluminum alloy and high temperature resistant engineering plastics design, good heat dissipation effect. Transmission mechanism adopts electronic positioning technology.Products completely accord with CE standard, adopts the international standard DMX512 signal control.Widely used in televisions, DISCO, dance halls, night clubs and other indoor places and outdoor performances.

This product when in the factory are performance in good condition and completely packed. So users should strictly comply with this specification statement warnings and instructions, any damage caused by misuse is not our company guarantee.If ignore this manual operation to fault and problem , It is not our responsible for the dealer. This user manual such as technical subject to change without prior notice.

Safety warning information

Before the frist time to use it, Please check whether the damage in transit, if happen damages in transit, please do not use this lamp, and please asap contact distributors or manufacturers.

Please don't install the lamp in the ordinary combustible material on the surface.Lamp should be installed in the well ventilated place, and the distance of the wall to keep it over 10 cm, at the same time, please check the fan hole was clear.

Do not use lamp direct project in flammable objects, lamp and the radiation of the distance between the objects please keep it over 12 m.

Do not use direct lamp project light source , to avoid damage the eyes.

Before installation, please make sure your use power supply voltage and marked voltage

Note:before any install,maintain and clean lamp, please confirm cut off the power supply.

1.Operation

touch	wheel	function
Up	turn left	option/edit
down	turn right	option/edit
OK / Enter	press the wheel	Executive start / exit
return	when return menu ,press the wheel	return previous page

Set "Modify address code" as an example, tell about the using of the touch.

1. Touch button "setting" in the main interface, and then into "setting" interface.
2. The 4 touch button in the right, are "up", "ok", "down", "back".
3. Press "up" or "down" button select "DMX address".
4. Press "ok" button into editing state.
5. Press "up" button or "down" button modification address code (using the new address immediately and autosave)
- 6.Press "OK" button out of the editing state (could omitted)
7. Press "back" button back to the main menu.

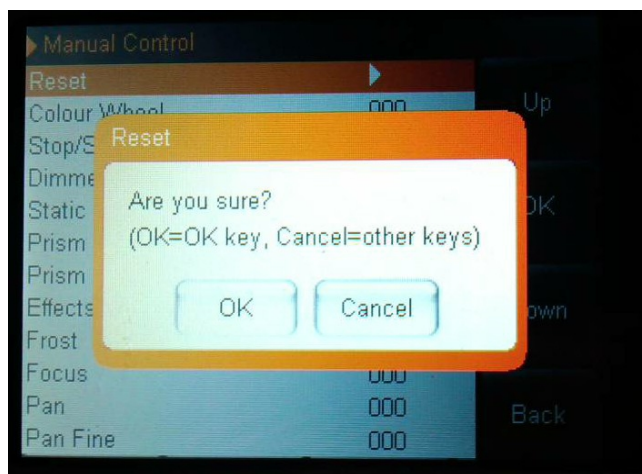
If using the wheel, process like bellow :

1. In the main interface , turn the wheel, select "setting" button.
2. Press the turn wheel and then loosen, into "setting" interface.
- 3.In the "setting" interface, select "DMX address"
4. Press the turn wheel and then loosen, into the editing state.
5. Turn the wheel, modification address code

6. After modification, press turn wheel and then loosen, out of the editing state.
7. Turn the wheel select “back”, press turn wheel and then loosen, back into the main interface.

2. Interface description

2.1 Main Interface



Top right corner 3 button for language switching and screen rotation

Bottom row four button corresponding sub interface is introduced, it's in the back.

With touch operating mode sub interface is introduced, if use wheel, corresponding relation as follows:

Press up : turn left

Press down : turn right

Press ok : press the wheel

Use wheel operation dialog box

If ok ,press the wheel.if cancel ,turn the wheel. (as above the display)

2.2 Set up the interface

Option	instruction	
Run Mode	DMX	Slave state:Accept control table or main engine
	Automatic	Statistics : Automatic operation and send DMX signal for slave Note:If the bulb is put out before , the light bulb will not be full light. If you need to observe the lighting effects, please keep the light on, and then into the automatic state
DMX Address	1-512	Press OK key into edit state, its selected hundred. Press up or down,change address code.Press again OK key, selected ten editor. Press again OK key, select the edit. Press it again to exit the edit state.
Channel Mode	16	The 17 th to 20 th channels are invalid.
	20	Control speed of the 17 th to 20 th channels (see the channel list)
Invert Pan/Tilt	OFF	
	NO	
Swap Pan-Tilt	OFF	
	NO	Change the channel of XY axis (include trimming)
Encoder Pan-Tilt	NO	Use encoder correct position
	OFF	Do not use encoder correct position
No DMX Signal	KEEP	According to the original state continues to run
	CLEAR	The return of the motor, stop running

Display Power Save	NO	Free 30 seconds after closing backlight
	OFF	Backlight ever bright
Burn on start up	OFF	Power on directly after reset, no light bulb (need to use the menu or control table to manual light bubble)
	NO	After power on automatic light bubble, must wait for the light bulb light up success can be reset
Load Default		Press ok key see the confirmation dialog box, again press ok key, Press OK key into edit

2.3. Information interface

Option	instruction
Total using time	Cumulative using time (Accuracy to the minute)
The use of time	Use of time since the boot (Accuracy to the minute)
System error logs	If the red indicator shine ,that mean the lamps runs error . The details can be entered sub-interface to view
After you finish view,	you can press the "OK" key to make the error log empty. Pay attention: Sometimes not the Hall or optical coupler installation problems, But the motor cable is connected backwards

2.4. Manual control interface

This interface use to control present light, neither belong to the from the machine state (didn't received DMX signal), nor belong to Host state(send DMX signal).

option	instruction	
Reset	Press ok key see the confirmation dialog box, again press ok key, enter the reset interface, all motor reset.	
Color wheel	0-255	Press OK key into edit state, its selected hundred. Press up or down,change channel value .Press again OK key, selected ten editor. Press again OK key, select the edit. Press it again to exit the edit state.
.....	0-255	
the speed of gobo wheel	0-255	
Blub control	ON	
	OFF	

2.5 Advanced interface

Password is "Up down up down " . For the runner , password is "Left right left right"

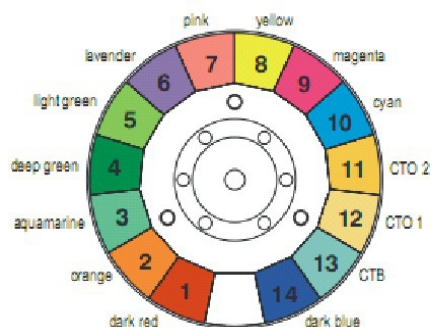
Touch operation : Press one time on the “up” key (Appear the first “*”),Then press one time on the “down” key (Appear the second “*”) , Press one time on the “up” key again (Appear the third “*”) , Press one time on the “down” key again (Appear the fourth “*”) . At last press “OK” key to do the password authentication .

Runner operation : Turn to the left 1 bar (Appear the first “*”), then turn to the right 1 bar (Appear the second “*”), Turn to the left 1 bar again (Appear the third “*”), Turn to the right 1 bar again (Appear the fourth “*”) . At last press runner key to do the password authentication .

option	instruction
Touch screen adjustment	After entering the calibration interface, Follow the cross cursor tips go touch the corresponding position. If the four locations to the correct data is received. Then complete the calibration and save the calibration data. If the calibration fails , This process will continue the cycle ,then can at any time by pressing the "OK" button to interrupt calibration.
Reset calibration (Zero calibration)	After entering the sub-interface, Can be adjusted x-axis, Y-axis to the motor's reset position. To compensate for hardware installation error. With address code and channel value different , reset calibration not support One-digit Two-digit Three-digit edited respectively. Not support long press too . And must be in 1 unit step-by-step calibration . Pay attention : Don't reset calibration when the motor work. If motor is working ,Please stop it then start to reset calibration. If necessary, Please reset operation one time before reset calibration .

CHANNEL	CHANNEL MODE	
	16	20
1	COLOUR WHEEL	COLOUR WHEEL
2	STOP/STROBE	STOP/STROBE
3	DIMMER	DIMMER
4	STATIC GOBO CHANGE	STATIC GOBO CHANGE
5	PRISM INSERTION	PRISM INSERTION
6	PRISM ROTATION	PRISM ROTATION
7	EFFECTS MOVEMENT (UNUSED)	EFFECTS MOVEMENT (UNUSED)
8	FROST	FROST
9	FOCUS	FOCUS
10	PAN	PAN
11	PAN FINE	PAN FINE
12	TILT	TILT
13	TILT FINE	TILT FINE
14	FUNCTION (UNUSED)	FUNCTION (UNUSED)
15	RESET	RESET
16	LAMP CONTROL	LAMP CONTROL
17		PAN-TILT TIME
18		COLOUR TIME
19		DIMMER-PRISM-FROST TIME
20		GOBO TIME

➤ **COLOUR WHEEL - channel 1**



BIT	EFFECT	效果	备注
255	FAST ROTATION	快速旋转	
.....	
150	SLOW ROTATION	慢速旋转	
145	BLUE + WHITE	深蓝 + 白光	为了方便记忆, 颜色值总是 5 的倍数。颜色比例可调, 比如: 数值为 5 时白色 50% 深红 50%, 如果数值为 4 则白色 60%深红 40%; 如果数值为 6 则白色 40%深红 60%
140	BLUE	深蓝	
135	CTB 8000 + BLUE	CTB 8000 + 深蓝	
130	CTB 8000	CTB 8000	
125	CTO 190 + CTB 8000	CTO 190 + CTB 8000	
120	CTO 190	CTO 190	
115	CTO 260 + CTO 190	CTO 260 + CTO 190	
110	CTO 260	CTO 260	
105	CYAN + CTO 260	青色 + CTO 260	
100	CYAN	青色	
95	MAGENTA + CYAN	品红 + 青色	
90	MAGENTA	品红	
85	YELLOW + MAGENTA	黄色 + 品红	
80	YELLOW	黄色	
75	PINK + YELLOW	粉红 + 黄色	
70	PINK	粉红	
65	LAVENDER + PINK	淡紫 + 粉红	
60	LAVENDER	淡紫	
55	LIGHT GREEN + LAVENDER	浅绿 + 淡紫	
50	LIGHT GREEN	浅绿	
45	GREEN + LIGHT GREEN	深绿 + 浅绿	
40	GREEN	深绿	
35	AQUAMARINE + GREEN	碧绿 + 深绿	
30	AQUAMARINE	碧绿	
25	ORANGE + AQUAMARINE	橙色 + 碧绿	
20	ORANGE	橙色	
15	RED + ORANGE	深红 + 橙色	
10	RED	深红	
5	WHITE + RED	白色 + 深红	
0	WHITE	白色	

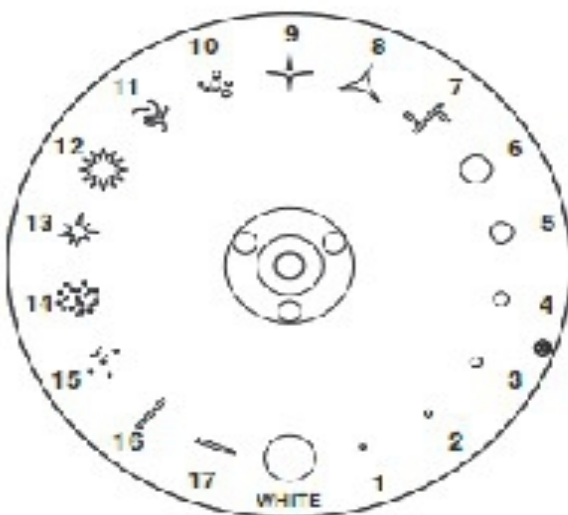
➤ **STOP/STROBE - channel 2**

BIT	EFFECT	效果	备注
252-255	OPEN	光闸打开	由调光通道控制
239-251	RANDOM FAST STROBE	随机快速频闪	
226-238	RANDOM MEDIUM STROBE	随机中速频闪	
213-225	RANDOM SLOW STROBE	随机慢速频闪	
208-212	OPEN	光闸打开	由调光通道控制
207	FAST PULSATION	脉冲频闪	
.....	
108	SLOW PULSATION	脉冲频闪	
104-107	OPEN	光闸打开	由调光通道控制
103	FAST STROBE	频闪	
.....	
4	SLOW STROBE	频闪	
0-3	CLOSED	光闸关闭	

➤ **DIMMER - channel 3**

BIT	EFFECT	效果	备注
255	100%	亮度 100%	
.....	
0	0%	亮度 0%	

➤ **STATIC GOBO CHANGE - channel 4**



BIT	EFFECT	效果	备注
255	GOBO 17 SHAKE, FAST SPEED	图案 17 快速抖动	每 5 个数值对应一个图案
.....	
251	GOBO 17 SHAKE, SLOW SPEED	图案 17 慢速抖动	
250	GOBO 16 SHAKE, FAST SPEED	图案 16 快速抖动	
.....	
246	GOBO 16 SHAKE, SLOW SPEED	图案 16 慢速抖动	
..... (图案 3 到图案 15)	
180	GOBO 2 SHAKE, FAST SPEED	图案 2 快速抖动	
.....	
176	GOBO 2 SHAKE, SLOW SPEED	图案 2 慢速抖动	
175	GOBO 1 SHAKE, FAST SPEED	图案 1 快速抖动	
.....	
171	GOBO 1 SHAKE, SLOW SPEED	图案 1 慢速抖动	
170	FAST ROTATION	快速旋转 (正向)	
.....	
135	SLOW ROTATION	慢速旋转 (正向)	
130-134	STOP	停止 (白色)	
129	SLOW ROTATION	慢速旋转 (反向)	
.....	
90	FAST ROTATION	快速旋转 (反向)	数值总是 5 的倍数
85	GOBO 17	图案 17	
80	GOBO 16	图案 16	
75	GOBO 15	图案 15	
70	GOBO 14	图案 14	
65	GOBO 13	图案 13	
60	GOBO 12	图案 12	
55	GOBO 11	图案 11	
50	GOBO 10	图案 10	
45	GOBO 9	图案 9	
40	GOBO 8	图案 8	
35	GOBO 7	图案 7	
30	GOBO 6	图案 6	
25	GOBO 5	图案 5	
20	GOBO 4	图案 4	
15	GOBO 3	图案 3	
10	GOBO 2	图案 2	
5	GOBO 1	图案 1	
0	WHITE	白色	

➤ **PRISM INSERTION - channel 5**

BIT	EFFECT	效果	备注
128-255	PRISM INSERTED	插入棱镜	
0-127	PRISM EXCLUDED	移开棱镜	

➤ **PRISM ROTATION - channel 6**

BIT	EFFECT	效果	备注
255	FAST ROTATION	快速旋转 (正向)	
.....	
193	SLOW ROTATION	慢速旋转 (正向)	
191-192	STOP	停止	
190	SLOW ROTATION	慢速旋转 (反向)	
.....	
128	FAST ROTATION	快速旋转 (反向)	
0-127	POSITION	棱镜角度调节	

➤ **EFFECTS MOVEMENT - channel 7 (MOUSED)**

➤ **FROST - channel 8**

BIT	EFFECT	效果	备注
128-255	FROST INSERTED	雾化	
0-127	FROST EXCLUDED	无雾化	

➤ **FOCUS - channel 9**

BIT	EFFECT	效果	备注
255	100%	调焦 100%	
.....	
0	0%	调焦 0%	

➤ **PAN - channel 10**
(略)

➤ **PAN FINE - channel 11**
(略)

➤ **TILT - channel 12**
(略)

➤ **TILT FINE - channel 13**
(略)

➤ **FUNCTION - channel 14 (NOUSED)**

➤ **RESET - channel 15**

BIT	EFFECT	效果	备注
128-255	COMPLETE RESET	全部电机复位	在相应区域停留 5 秒之后开始复位。 Reset is activated passing through the unused range and staying 5 seconds.
77-127	PAN/TILT RESET	大电机 (XY 轴) 复位	
26-76	EFFECTS RESET	小电机复位	
0-25	UNUSED RANGE	无效区域	

➤ **LAMP CONTROL- channel 16**

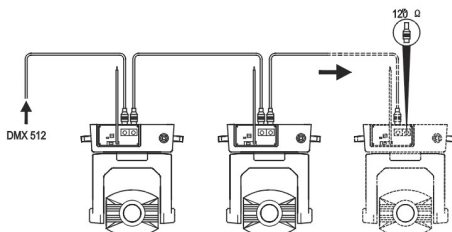
BIT	EFFECT	效果	备注
101-255	LAMP ON	点亮灯泡	在相应区域停留 5 秒之后开始开关灯泡。 Lamp switch passing through the unused range and staying 5 seconds.
10-100	LAMP OFF	熄灭灯泡	
0-9	UNUSED RANGE	无效区域	

➤ **TIMING CHANNELS**

	Timing Channel	Channel function	Remark
17	Pan-Tilt time	Pan-Tilt-(Pan fine-Tilt fine)	255 SLOW SPEED
18	Colour time	Colour wheel
19	Beam time	Dimmer-Prism -Frost	0 FAST SPEED
20	Gobo time	Static Gobo	

Control signal wire connection

Use the CLR-XLR controller line connect every light's DMX input port from controller's DMX input port, and start from the first light's DMX input port connect to the second light's DMX input port, in this way, until connect all of the lights, and then use the loop accompanied connect to the last light's signal input port the connect complete, as the follow picture:

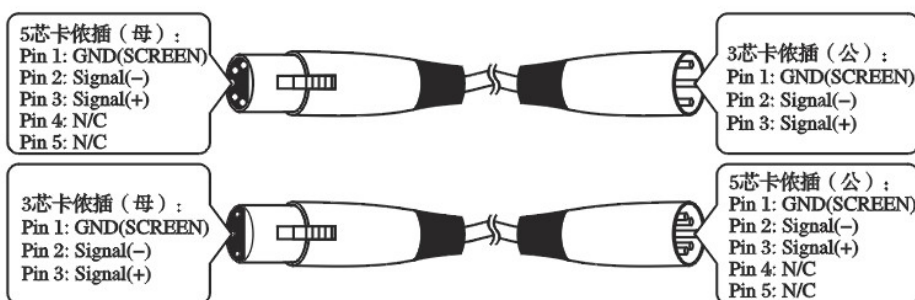


Note

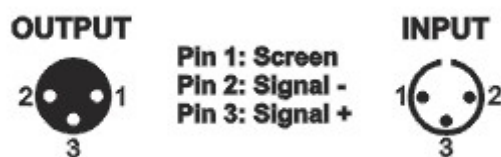
Please remember that in the last table lamps and lanterns signal outlet connection a loop plug. In this loop inserted in The CANON plug between 2 and 3 feet . Connect a 120 European resistance, connect this loop plug can avoid DMX512 signal reflection phenomenon in the transmission process of signal.

This lamp use 3 core XLR plug(plug seat) . If use 3 core XLR plugs (plug seat) , you must use a conversion line (5 core to 3 core) , as shown:

The conversion of three and five core plug (male and female)



Three core canon plug DMX512 interface circuit



Maintenance

- If the light's lens damaged or broken, and should need change the new lens, if the bulb damaged or have any deformation, make the light dim, it says that the bulb had run out of it's life., should change in time. There are 3 thermal protection device, using for cut off the lights power when it is heating. If the thermal protection device set up, and then need to check whether the fan is normal.
- It need Periodically to clean the out and in optical lens and the reflector's. Out put for the optimization lighting effect, clean time need to see the lights operating frequency and the using of the surrounding environment, using the soft cloth or general glass cleaning products to clean. Suggest clean the external optical system every 20 day, at least clean the internal optical system every 60 days.
- Please don't to use the alcohol etc organic solvent clean the out shell, in case it is damaged.

Statement

- When the products manufactured, They are good performance, complete packaging . All users should comply with the warnings and instructions stated above . Any damage caused by misuse is not within the scope of the company's warranty . Operation manual of neglect caused problems and the fault is not in the dealer is responsible within the scope of Neglect operation manual due to problem is out of dealer responsibility .
- This handbook stated related matters explanation right belongs to our company .
- This lamp use 3 core XLR plug(plug seat) . If use 3 core XLR plugs (plug seat) , you must use a conversion line (5 core to 3 core) , as shown:The conversion of three and five core plug (male and female)