



HSM-04-04



HSM-04-02

Genesis Digital™

HDMI 1.3 / DVI Matrix Switch Series

HSM-04-04	4x4 HDMI Matrix Switch with RS-232
HSM-I-04-04	4x4 HDMI Matrix Switch with RS-232 & IP
HSM-04-02	4x2 HDMI Matrix Switch with RS-232
HSM-I-04-02	4x2 HDMI Matrix Switch with RS-232 & IP

**CUSTOMER
SUPPORT
INFORMATION**

Order toll-free in the U.S. 800-959-6439
FREE technical support, Call **714-641-6607** or fax **714-641-6698**
Address: **Hall Research**, 1163 Warner Ave. Tustin, CA 92780
Web site: www.hallresearch.com E-mail: info@hallresearch.com

TRADEMARKS USED IN THIS MANUAL

Hall Research and its logo  are trademarks of Hall Research.

Any other trademarks mentioned in this manual are acknowledged as the property of the trademark owners.

FEDERAL COMMUNICATIONS COMMISSION

RADIO FREQUENCY INTERFERENCE STATEMENT

This equipment generates, uses, and can radiate radio frequency energy and if not installed and used properly, that is, in strict accordance with the manufacturer's instructions, may cause interference to radio communication. It has been designed to comply with the limits for a Class A computing device in accordance with the specifications in Subpart B of Part 15 of FCC rules, which are intended to provide reasonable protection against such interference when the equipment is operated in a commercial environment. Operation of this equipment in a residential area is likely to cause interference, in which case the user at their own expense will be required to take whatever measures may be necessary to correct the interference.

Changes or modifications not expressly approved by the party responsible for compliance could void the user's authority to operate the equipment.




**RoHS
Compliant**

HDMI™
HIGH-DEFINITION MULTIMEDIA INTERFACE

Contents

1. Introduction.....	3
1.1 General	3
1.2 Features	4
2. Installation.....	5
2.1 Package Contents	5
2.2 Input and Output Connections.....	5
2.2 Connection Block Diagram	7
3. Configuration & Operation	8
3.1 Front-Panel Buttons and Indicators	8
3.2 Turning the unit on and off.....	8
3.3 Making AV Routings or “Ties” from Front Panel	9
3.4 Making AV Routings or “Ties” Using IR Remote	10
3.5 Saving Presets (routing patterns)	10
3.6 Recalling Presets (routing patterns)	10
4. Control Commands (RS-232 and IP).....	11
4.1 Routing Functions.....	12
4.2 Preset Save and Recall Functions.....	12
4.3 Power Functions.....	12
4.4 Special Commands	13
4.5 Invalid Commands.....	14
5. IP Control Basics.....	15
5.1 Getting Device IP Address.....	16
5.2 Controlling the Matrix via Web Interface.....	16
5.3 IP Specific Serial Commands	22
6. Troubleshooting	23
6.1 Contacting Hall Research	23
6.2 Shipping and Packaging	23
7. Specifications	24
Appendix 1 – Front Panel Quick Reference Guide.....	25
Appendix 2 – Command Summary	25

1. Introduction

1.1 General

Thank you for purchasing this professional quality and compact Genesis™ Matrix Switch from Hall Research. This User's Manual applies to both 4x4 and 4x2 HDMI 1.3 Matrix Switchers.

As members of Hall's Genesis™ series these matrices are synonymous with high performance, intuitive and powerful user interface, easy to use control command set, and unsurpassed reliability.

The Matrix switches are HDMI 1.3 compliant, support HDCP, deep color, multi-channel digital audio (up to 7.1 channels), and may be used with any combination of DVI (PC) or HDMI (HDTV) sources and displays.

The Matrix uses Silicon Image 1.3 chipsets capable of color depth conversion independently for each output. This assures that the highest number of colors possible are displayed on each output. In other words if some outputs are connected to displays that only support HDMI 1.2 and others to 1.3, the unit will report as supporting HDMI 1.3 to each input source in order to receive the deepest color depth possible.

EDID management, fast switching, low profile (only 1 RU), PRESET Save and Recall functions, IR remote, and comprehensive front panel controls, make the Genesis Digital matrices ideal for home theater, conference room, multimedia presentation systems, and other similar settings.

The Matrix Switchers are optionally available with IP (LAN) port that allows control from any browser via HTTP web server (including web enabled smart phones) for control through other web appliances.

The web interface allows the user to assign custom names for each input, output, and preset pattern, making control over IP a snap.

1.2 Features

- Compatible with HDMI version 1.3, HDCP, and DVI inputs
- Supports a wide range of HDTV (HDMI) and PC (DVI) resolutions from 480i to 1080p and VGA to WUXGA
- Supports digital video formats in Deep Color 12bit
- Supports lossless digital audio: both 5.1 and 7.1 Dolby TrueHD, Dolby Digital Plus and DTS-HD Master Audio
- Powerful and intuitive front panel controls
- Preset Save and Recall of commonly used routing patterns
- EDID management prioritizes the highest capable displays (HDMI 1.3 takes precedence over 1.2 , and HDMI support supersedes DVI)
- Internal EDID emulation user selection option
- Output video signals are de-skewed and recreated with perfect timing and are jitter free.
- Includes IR remote control
- Front panel IR sensor and rear panel connector for optional IR detector cable (for instances where the unit is not in line of sight)
- Supports HDMI cables up to 15 meters (50 feet) long on its input, and drive cables to 15 meters on the outputs.
- Includes RS-232 port with Hall Research's Genesis Control Command Set (GCCS)
- Optional IP (LAN) port for browser
- Optional IP (LAN) versions includes web-server with easy to use controls (customizable with user definable names for each input and output)
- 1RU high compact & rugged rack mountable metal enclosure
- Uses Silicon Image (founding member of HDMI) Chipsets
- Assembled in USA

2. Installation

2.1 Package Contents

Your package should contain the 1RU Matrix Switcher, a Universal power supply (5v DC @ 6A), an IEC320 Power Cord, an IR remote control, and a User's Manual.



Figure 1 – Power Supply and IR Remote



Notice

Use only regulated 5v DC supply (center positive) as supplied with the unit. Use of any other voltage will cause damage to the unit and **void the warranty**.

2.2 Input and Output Connections

The matrix is housed in a 1RU 19" wide rack mountable enclosure. All of I/O, control, and the power connections are on the rear of the unit.



Figure 2 – Rear Panel Connections (for HSM-I-04-04)

- ❑ Using quality HDMI cables connect the inputs to video sources.
- ❑ If the sources are DVI (PC) then you will need either a DVI to HDMI adapter, or preferably, a DVI to HDMI Cable



Figure 3 –
Model C-HDMI-DVI-xM ($x=2, 3$ or 5 meters)

- ❑ For a professional installation, we recommend using locking HDMI cables. The Matrix Switch has a tapped hole above each HDMI connector and the locking cables available from Hall Research come with screws and stand-offs for securing the cables in place so they don't accidentally get unplugged



Figure 4 –
Model C-HDMI-L-x
($x=1.5, 3, 6, 10, 15, 25, 35$ or 50 ft)

- ❑ Next, connect the HDMI outputs to the displays.
- ❑ Plug the power supply to the unit. **Use only the supply that came with the unit**
- ❑ There is an IR remote detector (eye) on the front panel of the unit, however, if the unit is to be situated in a closet or enclosure, it may be necessary to use an IR detector cable and locate the eye somewhere more convenient. Hall Research can provide such a cable that will plug into a jack on the rear of the HSM matrix



Figure 5 -
Model CIR-DET-D1

- If the matrix needs to be controlled via RS-232, plug the controller (or PC) to the DB9 Female port on the rear of the matrix. Connection to PC's DB9 Male is made using a straight through DB9 Male-to-Female cable (as shown below).

HSM Matrix			Remote Control Console	
PIN	Definition		PIN	Definition
1	NC		1	NC
2	Tx		2	Rx
3	Rx		3	Tx
4	NC		4	NC
5	GND		5	GND
6	NC		6	NC
7	NC		7	NC
8	NC		8	NC
9	NC		9	NC

Table 1 – RS-232 Control Port Pinout

- The HSM matrices are available with IP port (HSM-I- ...). On these units there is an RJ45 (10/100 Base-T) for connection to your Local Area Network (LAN). These units feature a user friendly and powerful built-in web-server that allows control of the matrix via any browser for control using web enabled controllers.

2.2 Connection Block Diagram

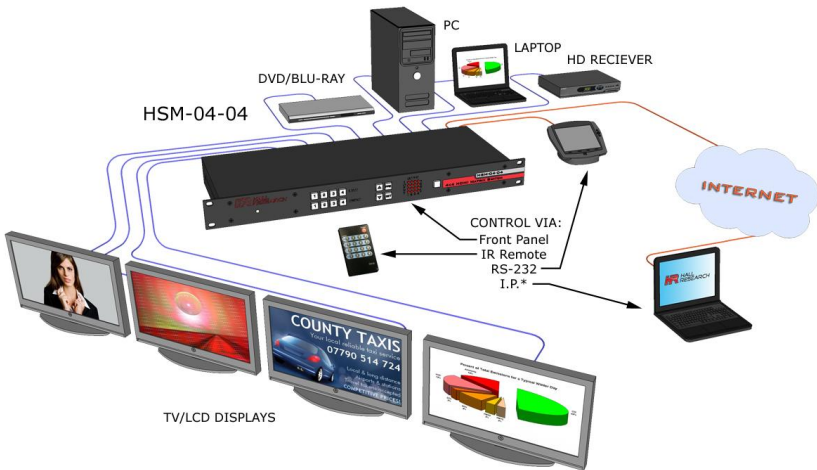


Figure 6 – Connection Block Diagram

3. Configuration & Operation

3.1 Front-Panel Buttons and Indicators

An image of the front panel for the 4x4 matrix is shown below. The 4x2 units have fewer OUTPUT buttons, but otherwise are the same.

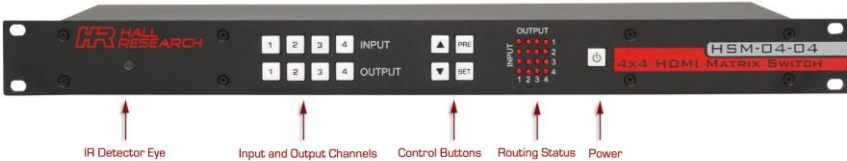


Figure 7 – HSM-04-04 front panel controls & indicators

The front panel can be used for the following purposes:

- Monitor & Control Power On/Off status
- View current Input/output routings (ties) on Routing Status LED Grid on the front panel
- Make new ties either starting from input or from output
- Recall preset patterns
- Save preset patterns

All of the front panel switches have built-in LEDs that help in the operation. Front panel functions are designed for maximum intuitiveness. With just a little practice, one can easily learn to monitor and control the matrix.

3.2 Turning the unit on and off

To turn the unit on, press the power button. The unit will do a LED test where all buttons and LED's are turned on for a few seconds. Then the matrix will recall the last routing pattern prior to being shut -down and update the Routing Status LED Grid.

To turn the Matrix off, press and hold the power button for 5 seconds. This is done as a precaution, so that if the power button is accidentally touched, it will not turn off the matrix!

3.3 Making AV Routings or “Ties” from Front Panel

To make the unit as convenient and intuitive as possible the HSM matrix allows you to make ties starting from the input channel's point of view or from the output.

3.3.1 Making a tie starting from the output

This is the most natural way of making connections since each output gets its signal from only one input.

- ❑ Press one of the output channel buttons. That button will light up and the inputs routed from that output will light up.
- ❑ At this point if you change your mind, and do not want to make any changes, just hit SET. If you want to change to another output channel, use either the up and down (▲▼) buttons to walk through other outputs; or just select another output channel.
- ❑ To route the output to a different input than the one currently connected to, hit the “candidate” input channel number. This does not actually make the connection; the new input channel will be blinking. Again if you change your mind, either hit the same blinking button (it will stop blinking), or hit another input channel. When you are sure you have selected the input channel you desire, hit SET.
- ❑ Note that once you enter the channel routing mode from the front panel, if you do not hit any buttons for approximately 10 seconds, the system will exit this mode without any user interaction.

3.3.2 Making a tie starting from the input

The procedure is similar to the above but a particular input can be routed to more than one output or none at all!

- ❑ Press one of the input channel buttons. That button will light up and ALL the outputs routed from that input will light up.
- ❑ If you want to change to another input channel, use either the up and down (▲▼) buttons to walk through other inputs; or just select another input channel.
- ❑ To route the selected input to single or multiple outputs, press the output buttons. Again, these new outputs are only “candidates” (will be blinking) and will not be routed until you hit SET.

3.4 Making AV Routings or “Ties” Using IR Remote

The remote control is very simple; outputs are labeled as A-D and they correspond to 1-4 on the rear of the box. Press the input channel you want the output connected to.

Note that the IR remote makes connections as soon as you hit the button!

It takes about 1 to 2 seconds for the matrix to do the routing (HDCP handshake requires a little time), so if you are going to change more than one output, pause for moment between pressing the buttons!

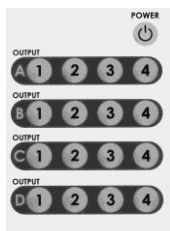


Figure 8 - IR

3.5 Saving Presets (routing patterns)

The number of presets accessible from the front panel is the same as the total # of input and output buttons. Therefore, each front panel button can memorize a pattern. For a 4x4 matrix, you can recall 8 presets and for a 4x2 you can recall 6 presets. However, through the IP or Serial port, the unit can store and recall 8 presets regardless of matrix configuration.

Current tie configurations can be saved as presets (1 through 8) for later recall.

To save the current AV routing pattern, press and hold the PRE button for 3 sec, the backlit LED will start flashing (this means that save function is activated). Press the desired input button to save the preset then press the SET button to complete the operation.

3.6 Recalling Presets (routing patterns)

Press and release the PRE (preset) button. The button will light up solid. Then press and release one of the channel buttons and hit SET.

4. Control Commands (RS-232 and IP)

The Genesis™ Matrices can be controlled via an external control system by using either the standard RS-232 or the optional IP port. Any program capable of standard serial communication in ASCII format is capable of working with the matrix. Most PCs with Windows™ OS have HyperTerminal™ or equivalent. There are also many free Terminal Emulator software programs available for download on the internet.

Note on RS-232 port availability on PC

Most PCs and notebooks do not come equipped with a serial RS-232 port. Therefore, for serial control from a PC you may need a USB to RS-232 converter. These are available from Hall Research (Model USB-RS232-1).

Figure 9 – USB to RS-232 Adapter



Use a DB9 Male-to-Female cable per Table 1 to connect the unit to the PC's serial port.

Use 9600 Baud, 8 bits, No Parity, 1 Stop bit, No flow control.

Upon power up, the Matrix will output a screen similar to the figure below through its serial port.

COMMAND	MEANING
PW0«	POWER IS OFF
CO1,1«	INPUT 1 ROUTED TO OUTPUT 1
CO2,2«	INPUT 2 ROUTED TO OUTPUT 2
CO3,3«	INPUT 3 ROUTED TO OUTPUT 3
CO4,4«	INPUT 4 ROUTED TO OUTPUT 4
HD1,0«	NO VIDEO INPUT ON OUTPUT 1
HD2,0«	NO VIDEO INPUT ON OUTPUT 2
HD3,0«	NO VIDEO INPUT ON OUTPUT 3
HD4,0«	NO VIDEO INPUT ON OUTPUT 4

4.1 Routing Functions

NOTE: HDMI Video and Audio always routed together.

Video routing commands specified are from the point of view of the output. The wildcard character "*" is acceptable for output (but not input). In addition, these commands can be used to monitor or query the status of system ties. Omitting the input channel will result in a response of the current routing for that output.

Important Note on Control Commands

Almost all commands issued to the Matrix will elicit a response from the Matrix once the command is accepted and execution completed. After issuing any command, you must wait for the matrix's response prior to sending another command. If you send another command prior to completion of the previous one, the matrix might ignore the command.

Command: CO_n,m<cr> *stands for Connect Output n to input m*
Response: CO_n,m<cr>

Variations:

Command: CO_n <cr> *stands for Connect Output n Query*
Response: CO_n,m<cr>

Command: CO*,m<cr> *stands for Connect All Outputs to input m*
Response: CO1,m<cr>
CO2,m<cr>
CO3,m<cr>
CO4,m<cr>

4.2 Preset Save and Recall Functions

Command: PRx<cr> *stands for Preset Recall. x = preset 1~ 8*
Response: CO1, m₁<cr>
CO2, m₂<cr>
CO3, m₃<cr>
CO4, m₄<cr>

Command: PSx<cr> *stands for Preset Save. x = preset 1~ 8*
Response: None (the current tie pattern is saved in EEPROM)

4.3 Power Functions

Command: PW1<cr> *stands for Power On*
Response: PW1<cr>
CO1, m₁<cr>
CO2, m₂<cr>
CO3, m₃<cr>
CO4, m₄<cr>

Important Note on Power ON Command

This command can take up to 10 seconds to complete. Upon powering up the unit will recall the previous state of each output prior to powering off and restore each connection.

Command: PW0<cr> *stands for Power Off*
Response: PW0<cr>

Variation:

Command: PW<cr> *stands for Power Query*
Response: PWx<cr> x=0 (off), or 1 (on)

4.4 Special Commands

Command: FB<cr> *stands for Firmware Boot*
Response: Depends on power state when the command was issued. This command is equivalent to unplugging the power supply and reconnection it.

Command: HDm<cr> *stands for HDCP Status Query on input m*
Response: HDm,x<cr> x=0 (no video detected on input), x=1 (video detected on input without HDCP), x=2 (video detected on input with HDCP). This command is useful for several purposes. For example, if you do not have HDCP compliant displays on all outputs and you try to send an input with HDCP to an output display that is not HDCP compliant, you will not get an image. This command enables you to check the status of each input and only route content that can be displayed to those outputs. In addition, since this command detects presence of video on inputs, you can use it to check status of inputs and reroute outputs if there is no video on the input currently routed.

Command: EDx<cr> *stands for EDID Emulation. x=1 (default HDTV), x=0 (Fully Emulated Hall Research DVI)*

Response: EDx<cr>
 This command is used to change the way EDID is reported to the sources. The default setting is 1. In this mode the EDID is algorithmically constructed based on the capabilities of all the LCD's connected at all outputs. The special setting is 0. In this mode, the first 128 bytes of EDID table correspond to Hall Research canned emulation, in which most standard PC (both 4x3 and 16x9) resolutions are reported to all the inputs. This mode should only be used if your inputs are from PC's DVI and you are having trouble getting the full complement of resolution choices in the PC. Please note that after changing the EDID emulation mode you must either unplug and reconnect the unit, or issue a FB (firmware boot) command.

Variation: ED<cr>
 This command is used to check the current setting of x

Command: ST<cr> *stands for Status Query*
Response: PW1<cr>
 CO1, m1<cr>
 CO2, m2<cr>
 CO3, m3<cr>
 CO4, m4<cr>
 HD1, x1<cr>
 HD2, x2<cr>

HD3, x3<cr>
HD4, x4<cr>

4.5 Invalid Commands

Any command other than those in above sections will get a response of
INVALID COMMAND

Notice about Additional Commands

HSM matrices equipped with IP Port have special Serial Commands to change IP address parameters. Please refer section 5.3 IP Specific Serial Commands for further info.

5. IP Control Basics

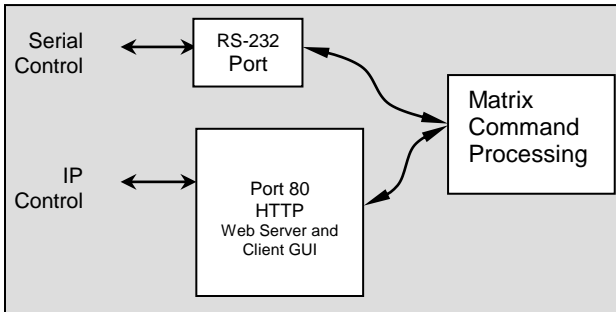


Figure 10 – IP Control Block Diagram

As shown in the figure above, the matrix can be controlled via RS232 Serial port or through an IP (Ethernet) port if equipped.

The IP interface features a built-in web server allowing web browsers running on different devices (computer, smart-phone, tablet) on the network to control and monitor matrix through HTTP protocol on port 80. (Next section will walk you through this IP based Web Interface).

The IP interface on every matrix shipped has a unique MAC-address, and must have a valid IP-address to function properly on the network.

Notice

As shipped from factory DHCP is enabled. This means that the network automatically assigns an IP address to your Matrix.

To find the IP address assigned to the matrix, please use Device Installer Software to get current IP address of Matrix.

Device Installer is available on the Product's webpage or at:

http://www.hallresearch.com/files/gui_downloads/DeviceInstaller.exe

5.1 Getting Device IP Address

The HSM matrix comes preconfigured for DHCP, which means it will automatically obtain an IP address when it is connected to the LAN. It is recommended that you set a static IP on each system in order to guarantee it maintains the same address. In order to set a static IP you must first discover what DHCP address was issued and then login to reconfigure the settings.

Download and install the Lantronix DeviceInstaller utility. Once installed, run the program. It will scan your LAN and locate any devices that are connected.

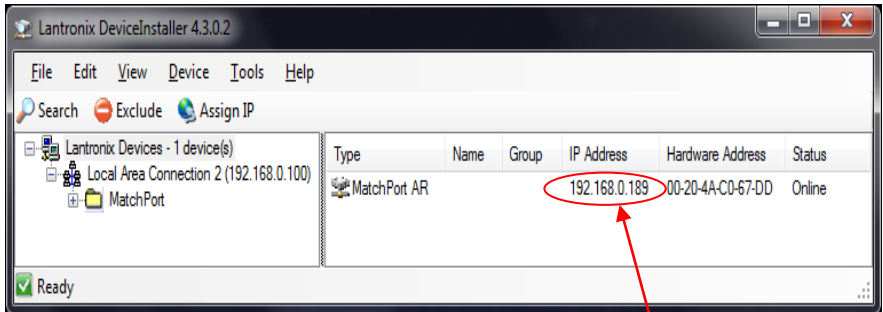


Figure 11- Device Installer

Your.device.ip.address

Important

Don't try to change the IP address of your appliance here. It will not take! The IP address can be changed from Web interface (refer section 5.2) or from Serial interface (refer section 5.3 for IP specific Serial Commands) for details.

5.2 Controlling the Matrix via Web Interface

The Genesis Matrices with IP option have a powerful, yet easy to use IP based web interface to control and monitor matrix. Web browser application running on any device (Computer, Smartphone, iPad™) on the same network can use this interface.

Once you have the correct IP address of your device, open web browser of your choice and type `http://your.device.ip.address` in address bar and hit Enter.

The webserver will automatically format the display for the browser it is running on. This means that on a Smart Phone the width and character sizes will be optimized so you don't have to deal with zooming and scrolling the screen to use the unit.

Furthermore, all elements on the screen are automatically updated from server side. This means that if the video routing is altered by the front panel of the matrix or another simultaneous LAN connection, your screen will automatically reflect the change.



Figure 12 – Control via web Interface

Web interface allows the user to change/monitor matrix I/O ties, assign names to Inputs, outputs and presets as well as change IP address, assign static IP address, enable/disable password protected login etc...

Preset, Input and Output names are saved permanently in matrix unless user changes it. Matrix also remembers Presets even when not powered.

The web interface is very user friendly and easy to access. It consists of three tabs named Routing, Labels and Settings. Each tab and its features are explained in next sections.

5.2.1 Routing Tab

Routing tab allows user to control matrix I/O ties, save current configuration as preset, load existing presets and turn the matrix On/Off.

Please refer to Figure 13 for a typical screen of routing tab as it would appear on a Smart-Phone.



Figure 13- Routing Tab

Outputs Column

Displays output names. You cannot change the output names (labels) here. Labels can be changed using the Labels tab

Inputs Column

Four dropdown buttons allow user to select Input to tie to respective Output. It also shows current ties status and updates in real time.

Recall Preset

First select preset you want to load from dropdown menu and then click Recall Preset button to load existing configuration from memory.

Save Preset

Select preset name from dropdown menu and Click Save Preset to save current tie pattern as a preset.

ON/OFF

These buttons show the current status of Matrix's power and can be used to turn it on and off. The button with red boarder is the current state and cannot be clicked. The other one is available. So for example in the above picture, the matrix is ON and you can turn it off if you click on OFF button.

5.2.2 Labels Tab

User can assign names of his/her choice to Inputs, Outputs and Presets in this tab.

Label names are limited to sixteen characters long including white spaces, and special symbols.

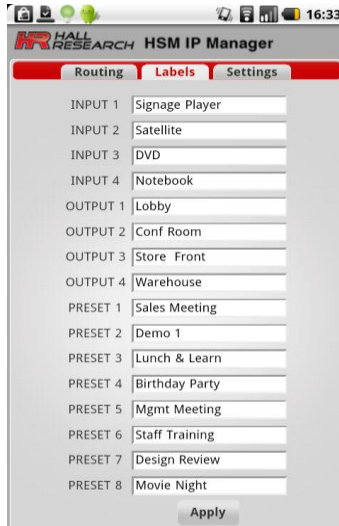


Figure 14- Labels Tab

Apply

Click this button to save your changes after changing names.

5.2.3 Settings Tab

Settings tab helps user to change IP address, enable/disable DHCP, enable/disable password, change current password and load factory default settings whenever necessary.



Figure-15 Settings Tab

IP

Displays current IP address of Matrix and if DHCP is disabled, it allows user to enter new IP address. User must hit Apply button to save changes.

SUBNET

Displays current SUBNET address and allows user change it If DHCP is disabled. User must hit Apply button to save changes.

GATEWAY

Displays current GATEWAY address and allows user change it if DHCP is disabled. User must hit Apply button to save changes.

DHCP

Enables/ Disables DHCP. User must hit Apply button to save changes.

LogIn

Enables/Disables login password.

If you are not worried about unauthorized personnel accessing the matrix on your LAN, then you may wish to disable Password for login. User must hit Apply Button to save changes.

Change Password?

Allows user to change existing password. When clicked a new window will pop up for entering the new password. Password length is limited to eight (8) characters long.

Apply

This button saves IP, SUBNET, GATEWAY and DHCP settings to matrix. User must hit this button when any one of above fields is changed to save changes.

Factory Reset

This button loads factory defaults to Matrix. It will reset label names, password, IP, SUBNET, DHCP settings to factory default values. Factory default will also wipe out saved presets.

5.2.4 Factory Default Settings

Default Values:

```
INPUT1--INPUT_1  
INPUT2--INPUT_2  
INPUT3--INPUT_3  
INPUT4--INPUT_4
```

```
OUTPUT1--OUTPUT_1  
OUTPUT2--OUTPUT_2  
OUTPUT3--OUTPUT_3  
OUTPUT4--OUTPUT_4
```

```
PRESET1--PRESET_1  
PRESET2--PRESET_2  
PRESET3--PRESET_3  
PRESET4--PRESET_4  
PRESET5--PRESET_5  
PRESET6--PRESET_6  
PRESET7--PRESET_7  
PRESET8--PRESET_8
```

```
IP: Disabled  
SUBNET: Disabled  
GATEWAY: Disabled  
DHCP: Enabled
```

```
Password State-- Disabled  
Factory Default Password: pass
```

5.3 IP Specific Serial Commands

HSM matrix equipped with IP interface allows user to assign Static IP address using Serial Interface with standard RS-232. Please refer section 4 to connect PC to Matrix over serial interface. Once you are connected use following Commands to assign IP address or load factory defaults.

5.3.1 Change IP Address

Note: All commands are case sensitive

Command: IP<space><ip_address_value><cr> stands for new IP address value

Error Response: Opps! IP Address is either Invalid OR Not Changed

Success Response: IP=<ip_address_value>

Command: SB<space><subnet_address_value><cr> stands for new Subnet address value

Error Response: Opps! SUBNET Address is not Valid.

Success Response: SUBNET=<subnet_address_value>

Command: GW<space><gateway_address_value><cr> stands for new gateway address value

Error Response: Opps! GATEWAY Address is not Valid.

Success Response: GATEWAY=<subnet_address_value>

Notice

User MUST enter ALL THREE Commands mentioned above with correct values and must get 'success response' for each to change IP address.

Following message confirms that user has got 'success response' for all above commands and device is now applying user settings:

"Applying settings to Matrix please wait"

WAIT until you see following Welcome message on Screen. It confirms that device has done with applying settings and serial interface is ready for other commands.

WELOCOME TO HALL RESEACH HSM MATRIX SERIAL INTERFACE,
PLEASE REFER TO THE USER MANUAL FOR MATRIX SERIAL COMMANDS

5.3.2 Load Factory Defaults to the IP interface

To load factory defaults use following command.

Command: FD<cr>

Response: Applying settings to Matrix please wait.

WAIT until you see following welcome message on Screen

WELOCOME TO HALL RESEACH HSM MATRIX SERIAL INTERFACE,
PLEASE REFER TO THE USER MANUAL FOR MATRIX SERIAL COMMANDS

(Note: After loading factory defaults Matrix will reset to default values as mentioned in section 5.2.4 Factory Default Settings)

6. Troubleshooting

There are no field serviceable parts or circuits in the device. Opening the device will void the warranty. If you think the device is malfunctioning, please contact Hall Research.

6.1 Contacting Hall Research

There are no user serviceable parts in the device. Opening the device will void the warranty.

If you determine that your Genesis™ Matrix is malfunctioning, do not attempt to repair the unit; instead, contact Hall Research Technical Support at 714-641-6607.

Before you do, make a record of the history of the problem. We will be able to provide more efficient and accurate assistance if you have a complete description.

6.2 Shipping and Packaging

If you need to transport or ship your unit:

- Package it carefully. We recommend that you use the original container.
- Before you ship the units back to Hall Research for repair or return, contact us to get a Return Authorization (RMA) number.

7. Specifications

Video

Standards	HDMI 1.3, DVI (single link)
Signal type	TMDS video, DDC EDID (0 to 5 v TTL)
Connectors	HDMI Type A (Female) with Locking
Video Data Rate	2.25 Gbps
Supported Colors	RGB, YCbCr 4:4:4, YCbCr 4:2:2, xvYCC
HDMI Cable Length	From source 15 m (50 ft) at any resolution or color depth, to display 15 m (50 ft) 1080p, or 7.5 m (25 ft) at deep color
HD Resolutions	480i, 480p, 576i, 576p, 720p, 1080i, 1080p 8 or 12 bits per channel (24 or 36 bits aggregate)
PC Resolutions	VGA through UXGA

Audio

Supported Formats	PCM2, PCM5.1, PCM7.1, Dolby5.1, DTS5.1, DD+, D-TrueHD, DTS-HD
-------------------	---

General

Power Supply	100 VAC to 240 VAC, 50-60 Hz, external; 5 VDC, 6 A, regulated
Nominal Power	Fully loaded, 17 watts max (3.4 amps @ 5v)
Temperature/humidity	Storage: -40 to +158 °F (-40 to +70 °C) / 10% to 90%, non-condensing Operating: +32 to +104 °F (0 to +40 °C) / 10% to 90%, non-condensing
Cooling	Convection
Mounting	Front panel 1RU 19" Rack mountable
Enclosure type	Metal
Dimensions	1.69" H x 17.3" W x 7.68" D - F/P Width is 19" (43 mm H x 440 mm W x 195 mm D)
Product weight	9 lb (4 kg)
Shipping weight	10 lb (4.5 kg)
Recommended cable	Locking High-Performance HDMI cables
Vibration	ISTA 1A in carton (International Safe Transit Association)
Safety	CE
EMI/EMC	CE, FCC Class A
MTBF	90,000 hours
Warranty	2 years parts and labor

Specifications are subject to change without notice

Appendix 1 – Front Panel Quick Reference Guide

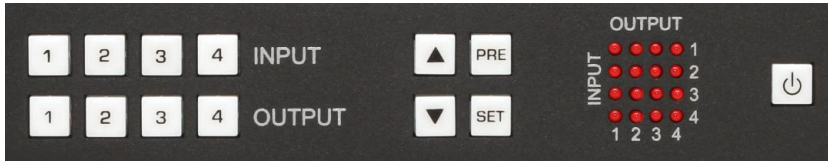


Figure 16 – Control buttons on the front panel

Function	Procedure
View ties or Make ties	<input type="checkbox"/> Hit any of the INPUT or OUTPUT Buttons
Recall Presets	<input type="checkbox"/> To change ties, hit any INPUT or OUTPUT then hit SET <input type="checkbox"/> Hit PRE (button lights up)
Save Presets	<input type="checkbox"/> Hit any INPUT or OUTPUT button <input type="checkbox"/> Hold PRE until it starts blinking
Power ON/OFF	<input type="checkbox"/> Hit any INPUT or OUTPUT button <input type="checkbox"/> To turn on hit power button <input type="checkbox"/> To turn off Press and hold power button

Appendix 2 – Command Summary

Command	Function
PWx	Power on/off x=0 power off, 1 power on Omitting x will show current power status
CO _{n,m}	Connect Output n = output, m= input <input type="checkbox"/> Omitting ,m will show current connections
PRx	Preset Recall... x = preset # can be 1 to 8
PSx	Preset Save ... x = preset # can be 1 to 8
HD _n	Read Input Status, n = Input # Returns: 0 No Video 1 Video
ED _n	EDID Management 0: DVI Emulated EDID 1: Computed HDTV (Default)
FB	Firmware Boot (Resets the entire system)
ST	Status Report



© Copyright 2011. Hall Research, Inc.
All rights reserved.

CUSTOMER
SUPPORT
INFORMATION

Order toll-free in the U.S. 800-959-6439
FREE technical support, Call **714-641-6607** or fax **714-641-6698**
Mail order: **Hall Research**, 1163 Warner Ave. Tustin, CA 92780
Web site: www.hallresearch.com E-mail: info@hallresearch.com