

---

# **Mobile Phone Monitor Software User's Manual**

**For Android only**

# Table of Contents

<b>1 OVERVIEW.....</b>	<b>3</b>
<b>1.1 General Introduction .....</b>	<b>3</b>
<b>1.2 Feature .....</b>	<b>3</b>
<b>1.3 Environment .....</b>	<b>3</b>
<b>2 INSTALLATION AND OPERATION.....</b>	<b>4</b>
<b>3 DVR SETUP .....</b>	<b>8</b>
<b>3.1 Encode .....</b>	<b>8</b>
<b>3.2 Account.....</b>	<b>8</b>

# **1 Overview**

## **1.1 General Introduction**

This user's manual is to help you install and use the mobile phone monitor software based on Android mobile phone.

## **1.2 Feature**

This software has the following features:

- Use mobile phone to view real-time video.
- Support PTZ control operation.

## **1.3 Environment**

Gphone HTC , HTC G1, HTC Magic, HTC Hero, HTC G5 and etc.

## 2 Installation and Operation

Please follow the steps listed below to install the software.

1) Copy DMSS.apk installation package to the Android mobile phone via the data cable. See Figure 2-1.

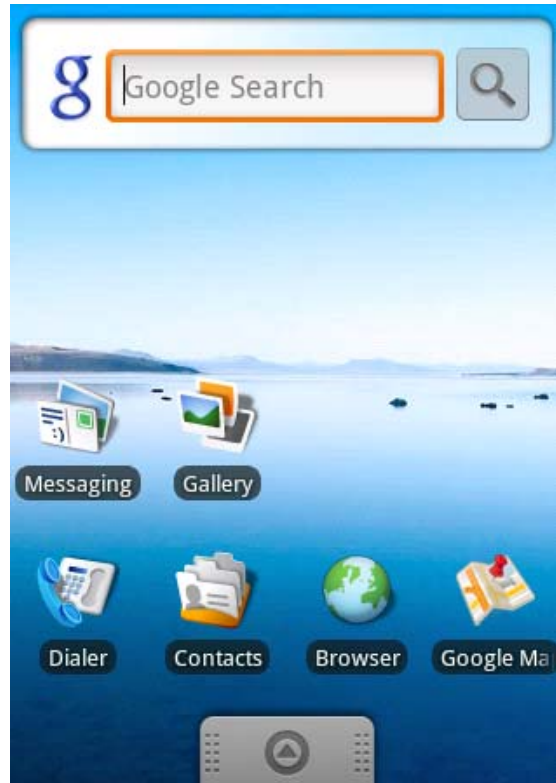


Figure 2-1

2) Find the DMSS.apk in the specified folder. Click the DMSS application package to begin the installation. The interface is shown as below after the installation. See Figure 2-2.

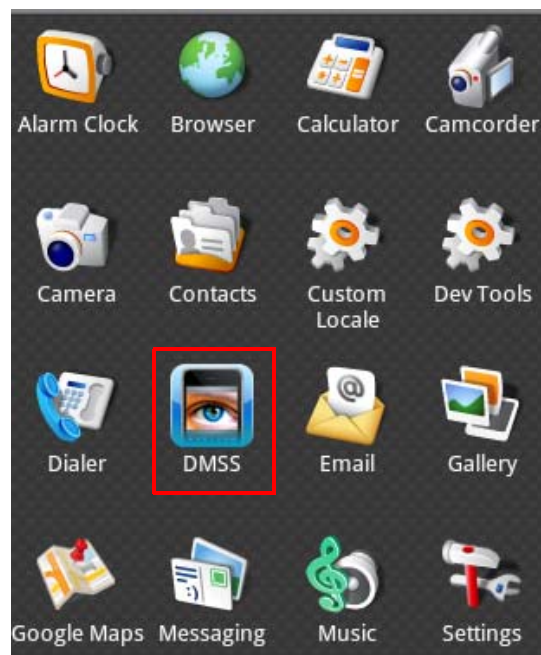


Figure 2-2

3) Click DMSS button, the initial interface is shown as below. See Figure 2-3.

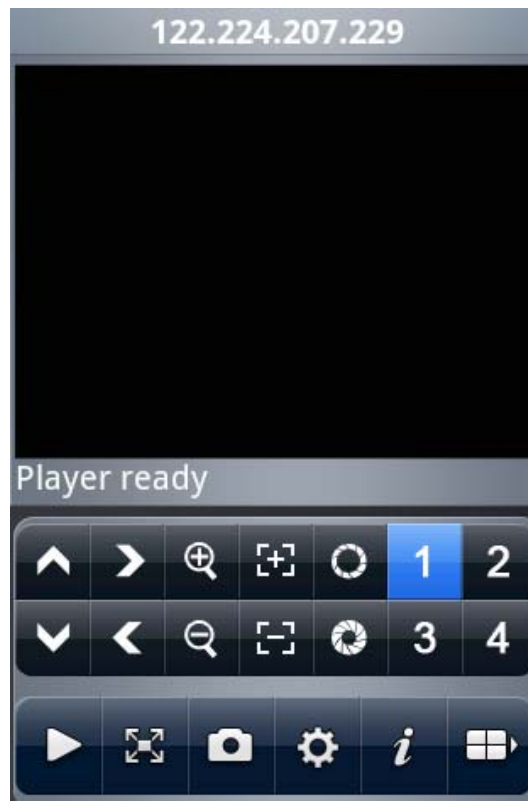


Figure 2-3

Please refer to the following sheet for detailed information.

	PTZ up		PTZ right		Zoom in
	Focus +		Aperture +		Channel 1
	Channel 2		PTZ down		PTZ left
	Zoom out		Focus -		Aperture -
	Channel 3		Channel 4		Play/Pause
	Full-screen/normal screen		Snapshot		Setting
	About		Next channel group		

### Important

The snapshot image is saved in default Android image folder.

4) If it is your first time to use the software, or you want to modify current setup, please click


button to modify the setup. See Figure 2-4.

- Address: DVR IP in WAN or dynamic domain.
- Port: DVR port value.

- User ID: The user name you login the IE.
- Password: The password you login the IE.



Figure 2-4

5) Click the  icon to switch between the normal screen and then full screen. See Figure 2-5.




Normal screen

Full screen

Figure 2-5

7) Select the corresponding channel name, system can open the specified channel and then play the video automatically. System default setup is to display the channel 1 to channel 4. Please

click  to display the next four channels (the channel 5 to channel 8). You can click this button again to go back to previous four channels (channel 1 to channel 4.).

**Important**

**System default setup is to display 8 channels after initialization. That is to say, there are two options: channel 1-4 and channel 5-8.**

**After the device connected to the Android, system can support 16-ch or 32-ch according to your device type.**

### 3 DVR Setup

Please set the connected DVR encode information to make the device suitable for the mobile phone monitor.

You can go to the DVR Web or go to the DVR local end to complete the setup. In this user's manual, we introduce how to finish setup at the local end.

#### Note

In case the mobile phone monitor adversely affects the regularly monitor, the mobile phone just gets the extra stream (not the main stream) to realize the real-time monitor. So, before the operation, please make sure current DVR supports dual stream function.

### 3.1 Encode

Encode interface is shown as in Figure 3-6. You can refer to the following setup:

- Resolution: CIF/QCIF.
- Frame Rate: The value ranges from 5 to 10.
- Bit rate type: CBR
- Bit Rate: 64-256Kb/S

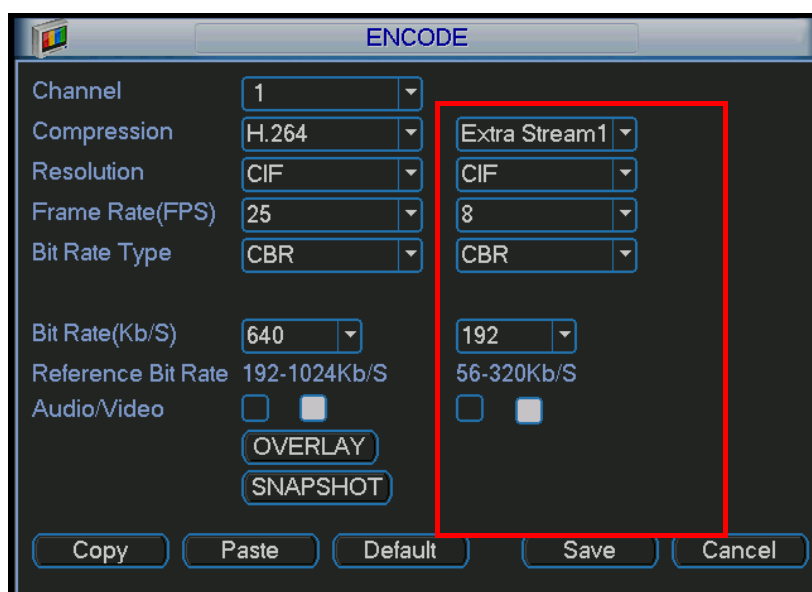


Figure 3-6

You can adjust the setup according to your mobile phone performance and network environment. You can lower the frame rate to guarantee fluent video if the network is not so good.

### 3.2 Account

For mobile phone account, please make sure it is reusable (support multiple users using the same account to login at the same time) and has PTZ control right. See Figure 3-7.

Then, when other uses are monitor properly, you can use mobile phone to monitor and realize PTZ control operation.



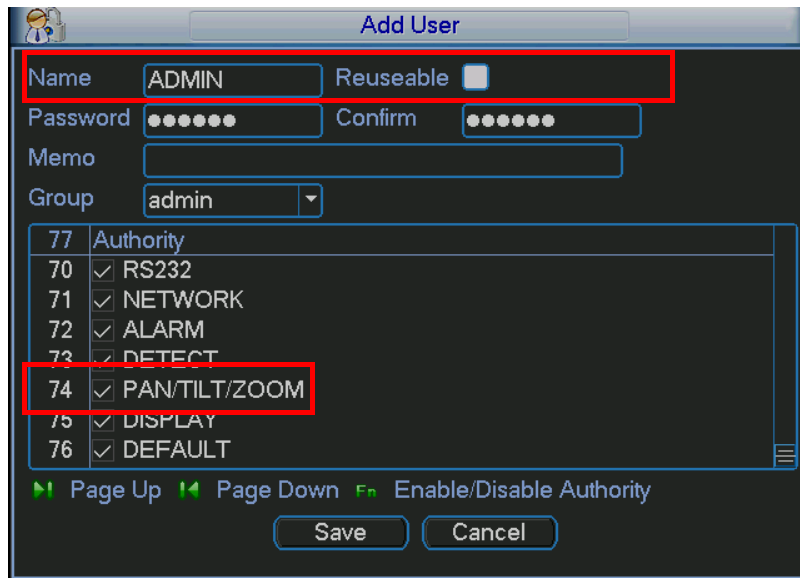


Figure 3-7

**Note**

This user's manual is for reference only. Slight difference may be found in user interface. All the designs and software here are subject to change without prior written notice. Please visit our website for more information.

---

# **Mobile Phone Monitor Software User's Manual**

**Based on Windows Mobile OS**

# Table of Contents

<b>1 OVERVIEW.....</b>	<b>3</b>
<b>1.1 General Introduction .....</b>	<b>3</b>
<b>1.2 Feature .....</b>	<b>3</b>
<b>1.3 Environment .....</b>	<b>3</b>
<b>2 SOFTWARE INSTALLATION.....</b>	<b>4</b>
<b>3 OPERATION .....</b>	<b>6</b>
<b>3.1 DVR Setup .....</b>	<b>6</b>
3.1.1 Encode .....	6
3.1.2 Account.....	6
<b>3.2 Surveillance Software .....</b>	<b>7</b>
<b>3.3 Software Login .....</b>	<b>8</b>
<b>3.4 Video Browser.....</b>	<b>9</b>
<b>3.5 PTZ Control .....</b>	<b>9</b>
<b>3.6 Exit.....</b>	<b>10</b>

# 1 Overview

## 1.1 General Introduction

This user's manual is to help you install and use the mobile phone monitor software based on Windows OS.

## 1.2 Feature

This software has the following features:

- Use mobile phone to view real-time video.
- Support PTZ control operation.

## 1.3 Environment

- This software supports Windows Mobile OS (5.0 or higher); Please refer to the following

brand list:

- ◇ Dopod: C730, HTC Touch, HKC Pearl, HTC6800, HTC6900, HTC6850, P3450, P4550, S1, S420, S730, Touch; , LG KC1, KS20, 830, 838, 900, Athena, C800(C858), CHT 9000, CHT 9100, D600, D802, D810, E806c, M700, MUSE, P800W, U1000;
- ◇ Mio: A501; OKWAP K868 Plus, K869, A700;
- ◇ ASUS: P526, P535, P735;
- ◇ Holley: H8800; ;
- ◇ Gigabyte: GSmart t600, i350, g-Smart, g-Smart i, i300;
- ◇ Samsung: SGH-i718;
- ◇ Lenovo: ET980, ET600, ET980T;
- ◇ Amoi: E850, E860, E870;
- ◇ Gionee: S600;
- ◇ Sharp: EM ONE;
- ◇ CoolPAD: 728, 728B, 768, 838G2;
- ◇ HP: 6925, hw6828, iPAQ rw6818, rw6965;
- ◇ UTStarcom: P903, XV6700;
- ◇ Toshiba:G500; O2 Flame, Argon, Atom, Atom Life, Exec, mini S, XDA Neo, Orbi, Stealth; i-mate JAMA, JAO3, JAQ, JAQ3, JAQ4, JASJAR, PDAL and etc.

- The connected device shall support dual-stream function.

## 2 Software Installation

Copy the mobile phone monitor software to the phone (Use PC synchronization software or network download function).

Click the software and then follow the steps one by one to install the software to the mobile phone.

Or you can input the device IP address plus mss.cab in the browser address column. In this way, you can install the program to the mobile phone directly. For example, if your device IP is 10.7.4.74, then you can input <http://10.7.4.47/mss.cab> in the browser. See Figure 2-1.



Figure 2-1

Then you can see an interface shown as in Figure 2-2. You can install the software now.



Figure 2-2

After software installation, you can see the following interface. See Figure 2-3.



Figure 2-3

## 3 Operation

### 3.1 DVR Setup

Please set the connected DVR encode information to make the device suitable for the mobile phone monitor.

You can go to the DVR Web or go to the DVR local end to complete the setup. In this user's manual, we introduce how to finish setup at the local end.

#### Note

In case the mobile phone monitor adversely affects the regularly monitor, the mobile phone just gets the extra stream (not the main stream) to realize the real-time monitor. So, before the operation, please make sure current DVR supports dual stream function.

#### 3.1.1 Encode

The encode interface is shown as in Figure 3-1. You can refer to the following setup:

- Resolution: CIF/QCIF.
- Frame Rate: The value ranges from 5 to 10.
- Bit rate type: CBR
- Bit Rate: 64-256Kb/S

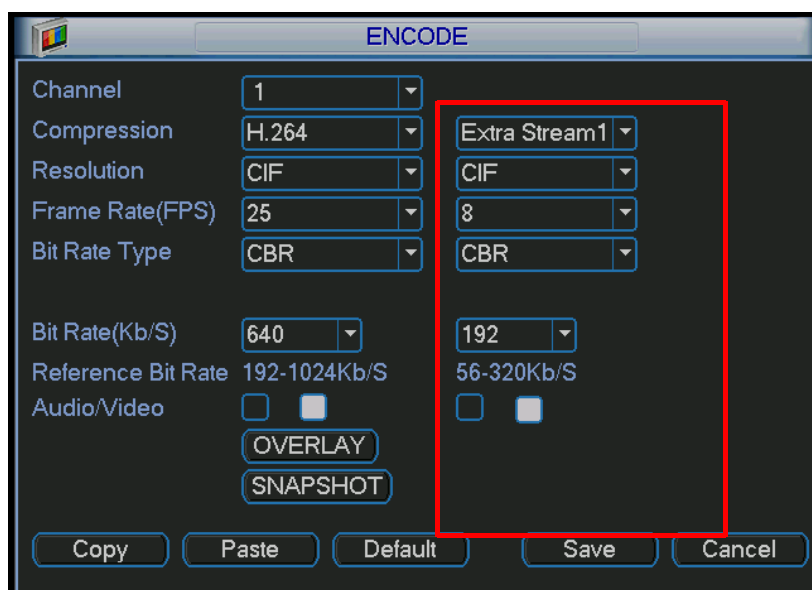


Figure 3-4

You can adjust the setup according to your mobile phone performance and network environment. You can lower the frame rate to guarantee fluent video if the network is not so good.

#### 3.1.2 Account

For mobile phone account, please make sure it is reusable (support multiple users using the same account to login at the same time) and has PTZ control right.

Then, when other uses are monitor commonly, you can use mobile phone to monitor and realize PTZ control operation. See Figure 3-2.

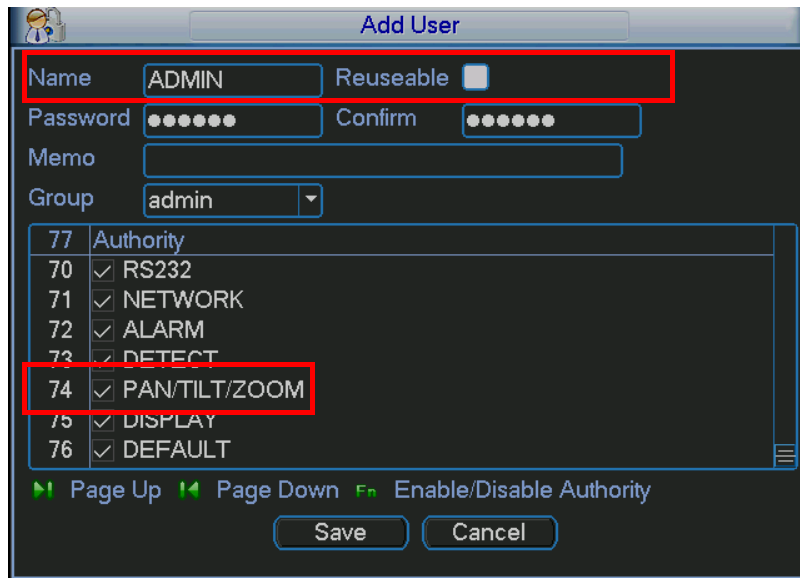


Figure 3-5

### 3.2 Surveillance Software


In the mobile phone, from Start to the Program, you can see the software shortcut menu. Its icon is  (DMSS). See Figure 3-6.



Figure 3-6

Click DMSS button, you can see an interface is shown as in Figure 3-7.





Figure 3-7

### 3.3 Software Login

In Figure 3-7, please input server IP, server port, user name and password. Click login button, you can see the following interface. See Figure 3-8.

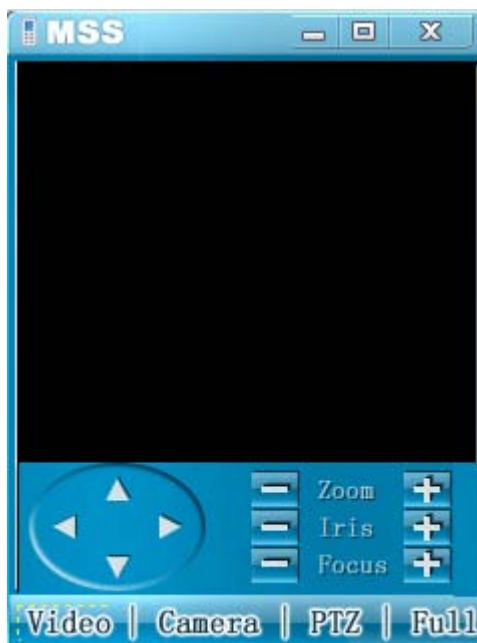


Figure 3-8

Mobile phone monitor software can remember the recent login device information, so that you can login conveniently the next time.

If you can not login, please check:

- Input information is valid.
- Server is running properly now.

- Network connection is OK (please access a website via IE to make sure you have connected to the Internet.)

### 3.4 Video Browser

After you logged in, click Camera button first, then you can double click the device name in the device tree. Now you can view the device channel list.

You can double click the channel name, or you can select the channel name and then click Video button to see the video. The interface is shown as in Figure 3-9.

During the real-time monitor process, there are three ways for you to go to full-screen mode.


- Click the video window once;
- Click the full button;
- Click the icon  on the top right corner.



Figure 3-9

### 3.5 PTZ Control


There are two ways for you to control PTZ.

- In the full-screen mode (or you have open the PTZ control interface), you can use the direction buttons in the mobile phone to control the PTZ direction.
- In non-real-time monitor mode, you can click the PTZ button to go to the PTZ control interface. See Figure 3-10. You can use the direction buttons in the interface to realize the corresponding function.



Figure 3-10

### 3.6 Exit

Click the icon  on the top right corner; you can exit the surveillance software.

#### Note

- Slight difference may be found in user interface.
- All the designs and software here are subject to change without prior written notice.
- Please visit our website for more information.

---

# **Mobile Phone Monitor Software User's Manual**

**For Blackberry only**

# Table of Contents

<b>1 OVERVIEW.....</b>	<b>3</b>
<b>1.1 General Introduction .....</b>	<b>3</b>
<b>1.2 Feature .....</b>	<b>3</b>
<b>1.3 Environment .....</b>	<b>3</b>
<b>2 SOFTWARE INSTALLATION.....</b>	<b>4</b>
<b>3 OPERATION .....</b>	<b>5</b>
<b>3.1 DVR Setup .....</b>	<b>5</b>
3.1.1 Encode .....	5
3.1.2 Account.....	5
<b>3.2 Mobile Phone Software .....</b>	<b>6</b>
3.2.1 Software Login .....	6
3.2.2 Main Interface .....	7
3.2.3 Video Browser.....	7
3.2.4 PTZ Control .....	8
3.2.5 Set .....	8
3.2.6 Exit.....	9

# **1 Overview**

## **1.1 General Introduction**

This user's manual is to help you install and use the mobile phone monitor software based on Blackberry mobile phone.

## **1.2 Feature**

This software has the following features:

- Use mobile phone to view real-time video.
- Support PTZ control operation.

## **1.3 Environment**

- Blackberry 9000 (Version 4.6.0).
- The connected devices shall support RTSP service.

## **2 Software Installation**

Please refer to the Blackberry mobile phone user's manual to install the software to the mobile phone. Usually you need to use the Blackberry desktop manager to install.

## 3 Operation

### 3.1 DVR Setup

Please set the connected DVR encode information to make the device suitable for the mobile phone monitor.

You can go to the DVR Web or go to the DVR local end to complete the setup. In this user's manual, we introduce how to finish setup at the local end.

#### Note

In case the mobile phone monitor adversely affects the regularly monitor, the mobile phone just gets the extra stream (not the main stream) to realize the real-time monitor. So, before the operation, please make sure current DVR supports dual stream function.

#### 3.1.1 Encode

Encode interface is shown as in Figure 3-1. You can refer to the following setup:

- Resolution: CIF/QCIF.
- Frame Rate: The value ranges from 5 to 10.
- Bit rate type: CBR
- Bit Rate: 64-256Kb/S

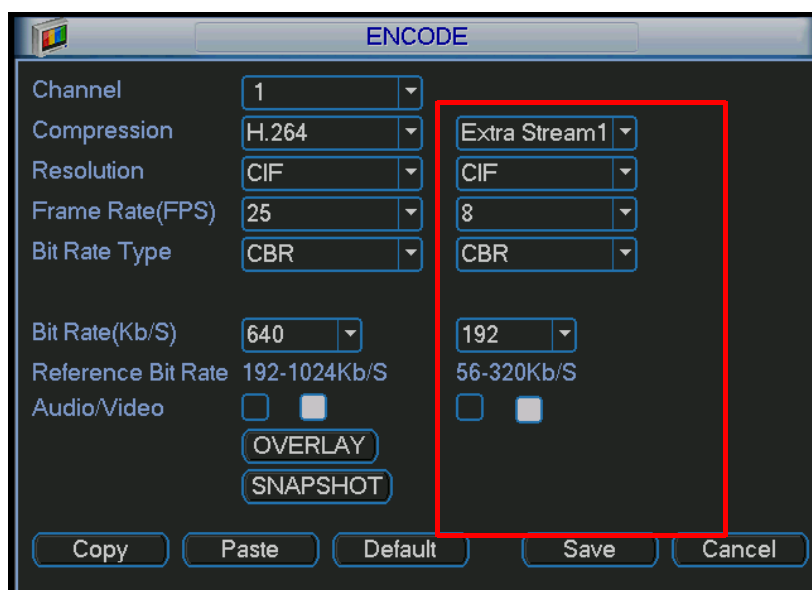


Figure 3-1

You can adjust the setup according to your mobile phone performance and network environment. You can lower the frame rate to guarantee fluent video if the network is not so good.

#### 3.1.2 Account

For mobile phone account, please make sure it is reusable (support multiple users using the same account to login at the same time) and has PTZ control right. See Figure 3-2.

Then, when other uses are monitor properly, you can use mobile phone to monitor and realize PTZ control operation.



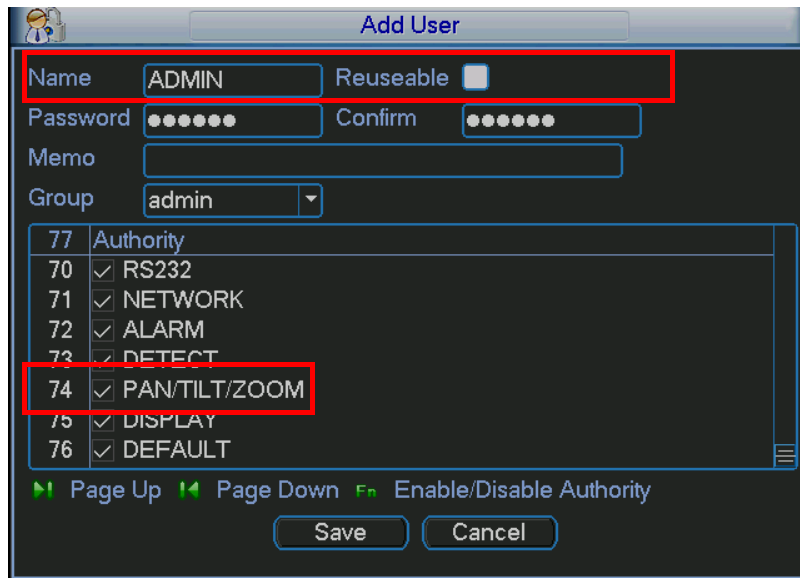


Figure 3-2

## 3.2 Mobile Phone Software

### 3.2.1 Software Login

In the mobile phone, from Function to the Download, you can see the software shortcut menu. Now you can see an interface is shown as in Figure 3-3.

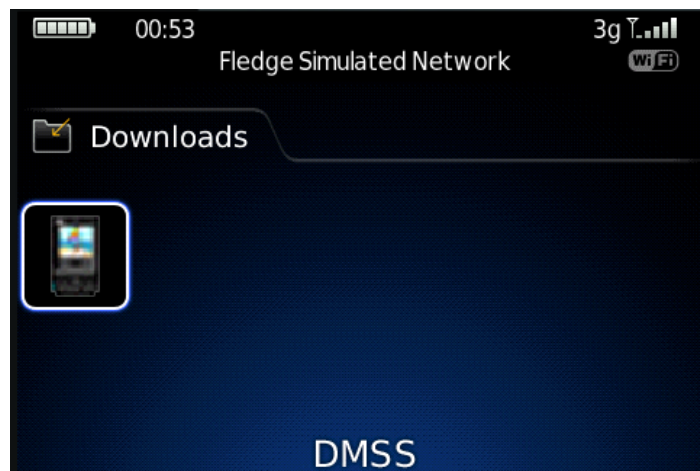



Figure 3-3

Click the  button; you can see an interface is shown as in Figure 3-4.

- Device IP: Device IP or domain name.
- Device port: Device login port.
- User name: Please input the user name here.
- Password: Please input the corresponding password.
- Network: Please select the network here. It includes two options: WiFi/Other.

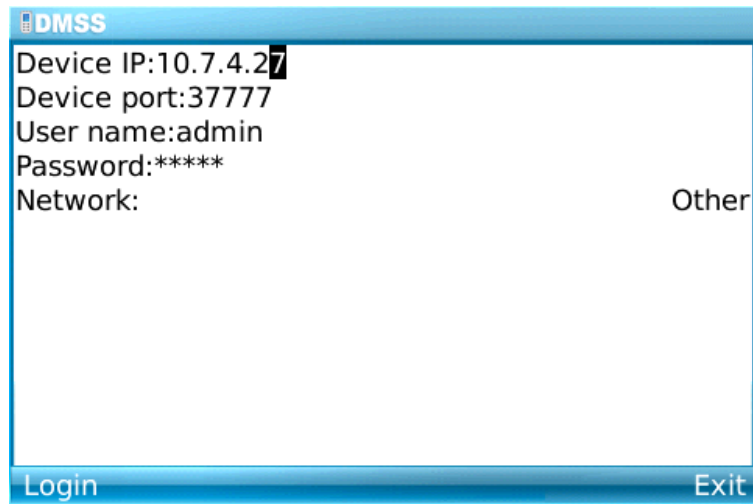


Figure 3-4

Mobile phone monitor software can remember the recent login device information, so that you can login conveniently the next time.

If you can not login, please check:

- Input information is valid.
- Server is running properly now.
- Network connection is OK (please access a website via browser to make sure you have connected to the Internet.)

### 3.2.2 Main Interface

After you logged in, the interface is shown as below. See Figure 3-5. Here you can see the channel available.

- Back: Click it to exit current interface.
- Exit: Exit the monitor software.



Figure 3-5

### 3.2.3 Video Browser

Please select the corresponding channel you want to view; you can see an interface is shown as in Figure 3-6.

- Camera: Go to channel setup interface.
- PTZ: Display/Hide PTZ.

- Full: Click it to go to the full-screen display mode. You can click the rolling ball to exit the full-screen mode. The “space” button is the full-screen short cut button. It is valid in video monitor mode.
- Set: Go to video monitor setup interface.
- Exit: Exit current monitor software.



Figure 3-6

### 3.2.4 PTZ Control

Please select the PTZ button to go to the PTZ operation interface. You can use the rolling ball to select the corresponding button here. See Figure 3-7.

In the full-screen mode, you can use the rolling ball directly to control the PTZ direction.

In video monitor mode, you can use E/S/X/F to realize the up/down/left/right PTZ operation.



Figure 3-7

### 3.2.5 Set

Click set button, you can see the following interface. See Figure 3-8.

- RTSP port: You can set device listening port. Default value is 554.

- Stream type: You can select the stream type. It includes two options: main stream/extra stream.

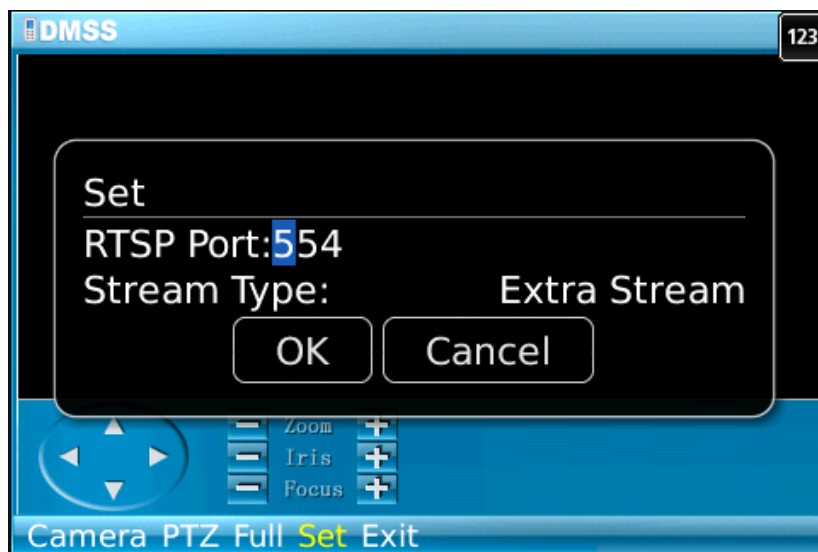


Figure 3-8

### 3.2.6 Exit

Select exit button, you can see the following interface. See Figure 3-8. Select the Yes button; you can exit the mobile phone monitor software.

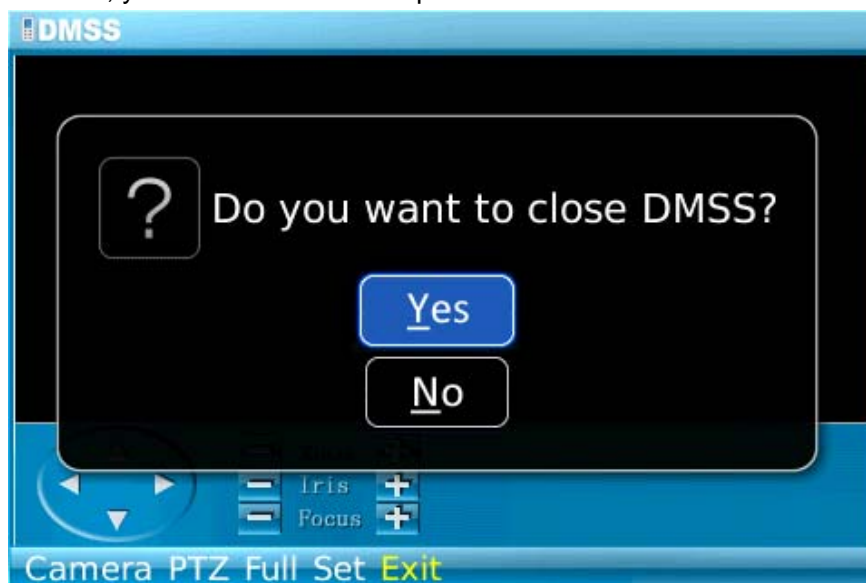


Figure 3-9

#### Note

This user's manual is for reference only. Slight difference may be found in user interface. All the designs and software here are subject to change without prior written notice. Please visit our website for more information.

---

# **Mobile Phone Monitor Software User's Manual**

**For iPhone only**

# Table of Contents

<b>1 OVERVIEW.....</b>	<b>3</b>
<b>1.1 General Introduction .....</b>	<b>3</b>
<b>1.2 Feature .....</b>	<b>3</b>
<b>1.3 Environment .....</b>	<b>3</b>
<b>2 SOFTWARE INSTALLATION.....</b>	<b>4</b>
<b>3 DVR SETUP .....</b>	<b>8</b>
<b>3.1 Encode .....</b>	<b>8</b>
<b>3.2 Account.....</b>	<b>8</b>

# **1 Overview**

## **1.1 General Introduction**

This user's manual is to help you install and use the mobile phone monitor software based on iPhone.

## **1.2 Feature**

This software has the following features:

- Use mobile phone to view real-time video.
- Support PTZ control operation.

## **1.3 Environment**

- iPhone 3G (8G)

## 2 Software Installation

Please follow the steps listed below to install the software.

1) Please go to the App Store to install the software. See Figure 2-1.

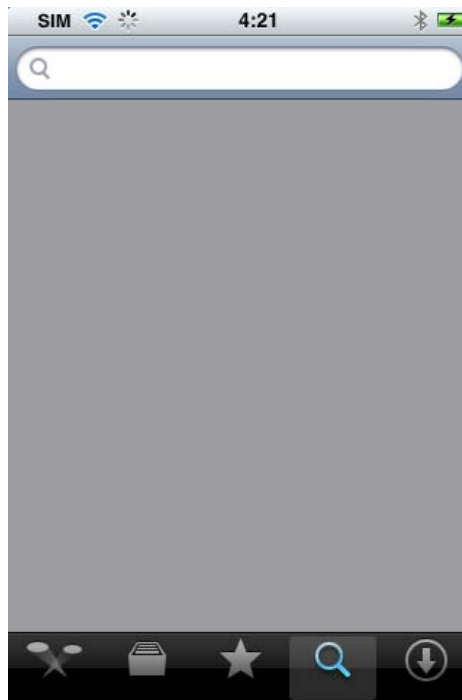


Figure 2-1

2) Search DMSS to find the software.

3) Click the DMSS software to begin the installation. The interface is shown as below after the installation. See Figure 2-2.

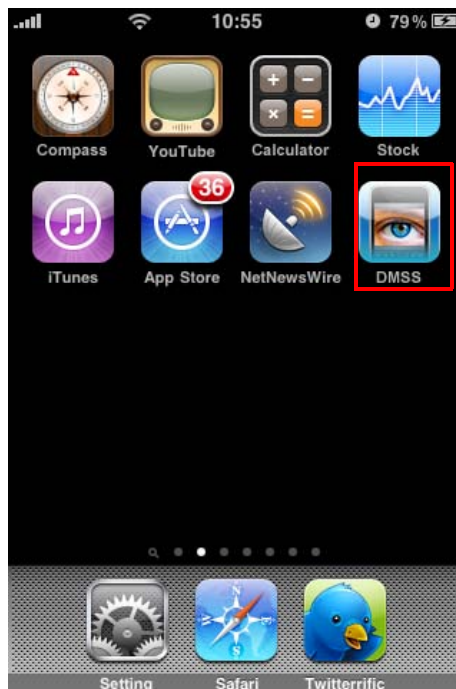


Figure 2-2

4) Click DMSS button, the initial interface is shown as below. See Figure 2-3.



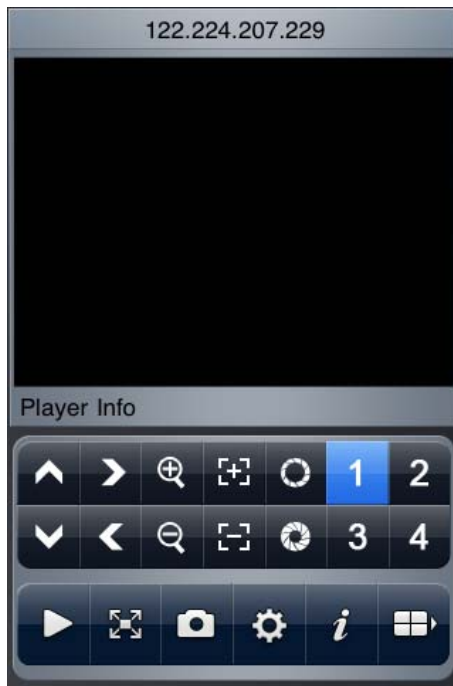


Figure 2-3

Please refer to the following sheet for detailed information.

		PTZ up			PTZ right			Zoom in
		Focus +			Aperture +			Channel 1
		Channel 2			PTZ down			PTZ left
		Zoom out			Focus -			Aperture -
		Channel 3			Channel 4			Play/Pause
		Full-screen/normal screen			Snapshot			Setting
		About			Next channel group			

### Important

The snapshot image is saved in default iPhone image folder.


5) If it is your first time to use the software, or you want to modify current setup, please click

button to modify the setup. See Figure 2-4.

- Address: DVR IP in WAN or dynamic domain.
- Port: DVR port value.
- User ID: The user name you login the IE.
- Password: The password you login the IE.



Figure 2-4

6) Click the  icon to switch between the normal screen and then full screen. See Figure 2-5.

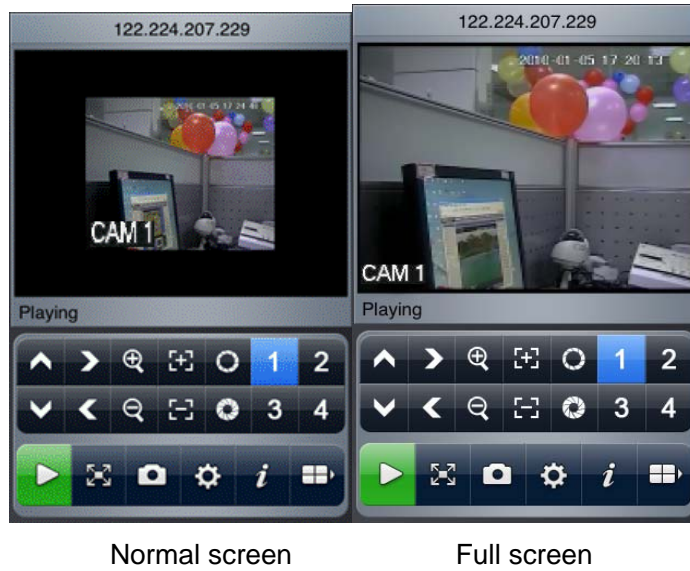


Figure 2-5

When you knife-hold the iPhone, system goes to the full-screen automatically. See Figure 2-6.



Figure 2-6

7) Select the corresponding channel name, system can open the specified channel and then play the video automatically. System default setup is to display the channel 1 to channel 4. See Figure 2-7.

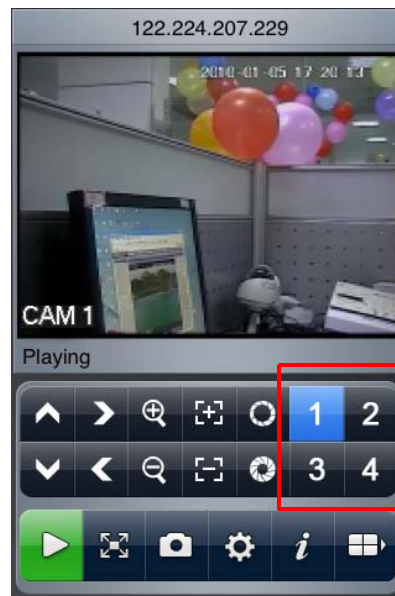



Figure 2-7

Please click  to display the next four channels (the channel 5 to channel 8). You can click this button again to go back to previous four channels (channel 1 to channel 4.).

### Important

**System default setup is to display 8 channels after initialization. That is to say, there are two options: channel 1-4 and channel 5-8.**

**After the device connected to the iPhone, system can support 16-ch or 32-ch according to your device type.**

### 3 DVR Setup

Please set the connected DVR encode information to make the device suitable for the mobile phone monitor.

You can go to the DVR Web or go to the DVR local end to complete the setup. In this user's manual, we introduce how to finish setup at the local end.

#### Note

In case the mobile phone monitor adversely affects the regularly monitor, the mobile phone just gets the extra stream (not the main stream) to realize the real-time monitor. So, before the operation, please make sure current DVR supports dual stream function.

### 3.1 Encode

Encode interface is shown as in Figure 3-8. You can refer to the following setup:

- Resolution: CIF/QCIF.
- Frame Rate: The value ranges from 5 to 10.
- Bit rate type: CBR
- Bit Rate: 64-256Kb/S

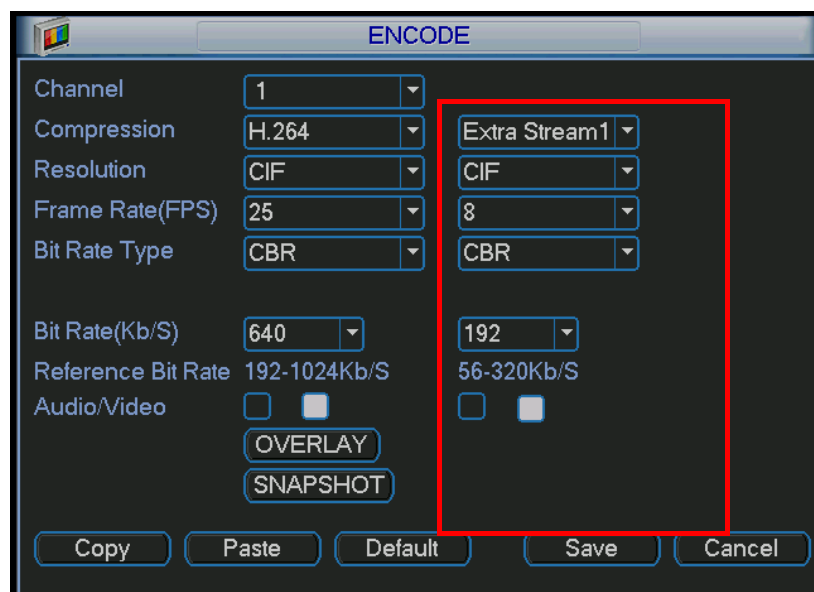


Figure 3-8

You can adjust the setup according to your mobile phone performance and network environment. You can lower the frame rate to guarantee fluent video if the network is not so good.

### 3.2 Account

For mobile phone account, please make sure it is reusable (support multiple users using the same account to login at the same time) and has PTZ control right. See Figure 3-9.

Then, when other uses are monitor properly, you can use mobile phone to monitor and realize PTZ control operation.

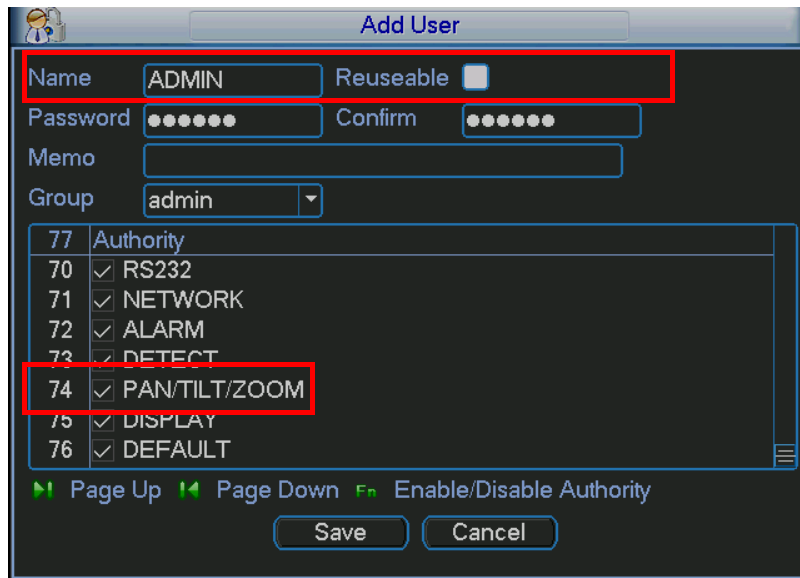


Figure 3-9

**Note**

This user's manual is for reference only. Slight difference may be found in user interface. All the designs and software here are subject to change without prior written notice. Please visit our website for more information.

---

## **Mobile Phone Monitor Software User's Manual**

**Based on Symbian OS**

# Table of Contents

<b>1 OVERVIEW.....</b>	<b>3</b>
<b>1.1 General Introduction .....</b>	<b>3</b>
<b>1.2 Feature .....</b>	<b>3</b>
<b>1.3 Environment .....</b>	<b>3</b>
<b>2 SOFTWARE INSTALLATION.....</b>	<b>4</b>
<b>3 OPERATION .....</b>	<b>5</b>
<b>3.1 DVR Setup .....</b>	<b>5</b>
3.1.1 Encode .....	5
3.1.2 Account.....	5
<b>3.2 Mobile Phone Software .....</b>	<b>6</b>
<b>3.3 Software Login .....</b>	<b>7</b>
<b>3.4 Video Browser.....</b>	<b>7</b>
<b>3.5 PTZ Control .....</b>	<b>9</b>
<b>3.6 Exit.....</b>	<b>9</b>

# 1 Overview

## 1.1 General Introduction

This user's manual is to help you install and use the mobile phone monitor software based on Symbian OS.

## 1.2 Feature

This software has the following features:

- Use mobile phone to view real-time video.
- Support PTZ control operation.

## 1.3 Environment

- Technically speaking, based on the Symbian development manual, this software can support all Symbian S60\_3<sup>rd</sup> OS mobile phones.
- Recommended S60\_3<sup>rd</sup> FP2&FP1 mobile phone includes: NokiaN85, NokiaN82 and etc.

### Important

- ✧ For Nokia Symbian S60\_3<sup>rd</sup> base version and Nokia Symbian S60\_3<sup>rd</sup> FP1 version, please download the s60plugins.rar file and install all three Nokia official plug-ins (glib.SIS /pips\_nokia\_1\_3\_SS.sis /stdcpp.SIS)
- ✧ If you can not use the monitor software after installation, please connect your mobile phone to the Nokia PC Suite 7.1.26 (or higher), click the help menu. Then you need to select to install the PC Suite again. Please follow the instruction to install MMSSync suite program, and Contacts Group DS Plugin.
- The connected device shall support dual-stream function and you have enabled the extra stream.



## **2 Software Installation**

Copy the mobile phone monitor software to the phone (Use PC synchronization software or network download function).

Click the software and then follow the steps one by one to install the software to the mobile phone.

## 3 Operation

### 3.1 DVR Setup

Please set the connected DVR encode information to make the device suitable for the mobile phone monitor.

You can go to the DVR Web or go to the DVR local end to complete the setup. In this user's manual, we introduce how to finish setup at the local end.

#### Note

In case the mobile phone monitor adversely affects the regularly monitor, the mobile phone just gets the extra stream (not the main stream) to realize the real-time monitor. So, before the operation, please make sure current DVR supports dual stream function.

#### 3.1.1 Encode

You can refer to the following setup:

- Resolution: CIF/QCIF.
- Frame Rate: The value ranges from 5 to 10.
- Bit rate type: CBR
- Bit Rate: 64-256Kb/S

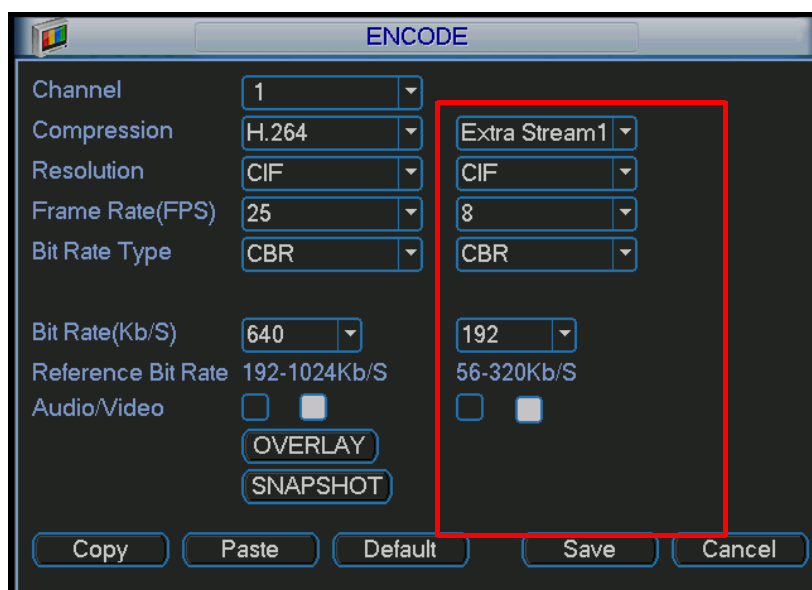


Figure 3-1

You can adjust the setup according to your mobile phone performance and network environment. You can lower the frame rate to guarantee fluent video if the network is not so good.

#### 3.1.2 Account

For mobile phone account, please make sure it is reusable (support multiple users using the same account to login at the same time) and has PTZ control right.

Then, when other uses are monitor commonly, you can use mobile phone to monitor and realize PTZ control operation.

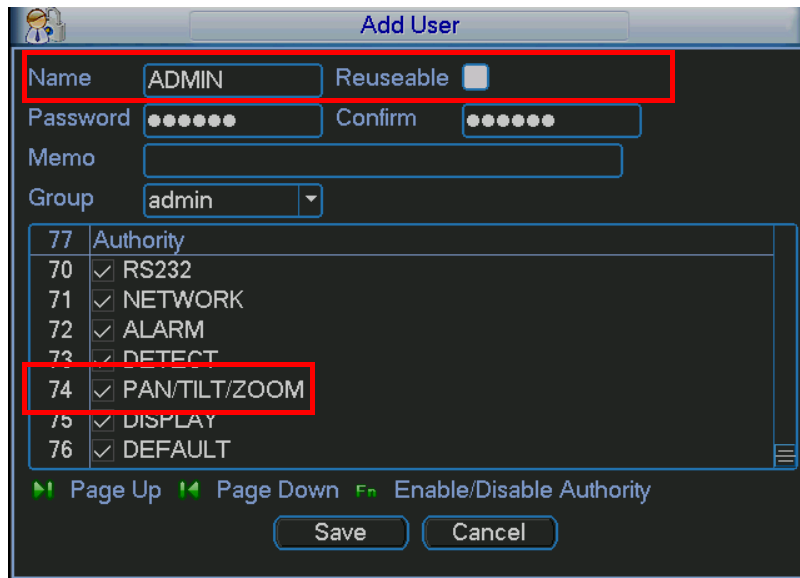


Figure 3-2

### 3.2 Mobile Phone Software


In the mobile phone, from Start to the Program, you can see the software shortcut menu. Its icon is  (DMSS). See Figure 3-3.



Figure 3-3

Click DMSS button, you can see an interface is shown as in Figure 3-4.



Figure 3-4

### 3.3 Software Login

In Figure 3-4, please input server IP, server port, user name and password. Click login button, you can see the following interface. See Figure 3-5.



Figure 3-5

Mobile phone monitor software can remember the recent login device information, so that you can login conveniently the next time.

If you can not login, please check:

- Input information is valid.
- Server is running properly now.
- Network connection is OK (please access a website via IE to make sure you have connected to the Internet.)

### 3.4 Video Browser

Please refer to the following figure for mobile phone information. See Figure 3-6.

Please refer to the following sheet for detail information.

SN	Name
1	headphones
2	Selection button
3	Dial a phone
4	Function menu
5	Number
6	Microphone
7	Navi™ button. (In the following chapter, we call it navigation button.)
8	Clear data button
9	End an active call.
10	Multiple media button
11	Light sensor
12	Snapshot/Camera

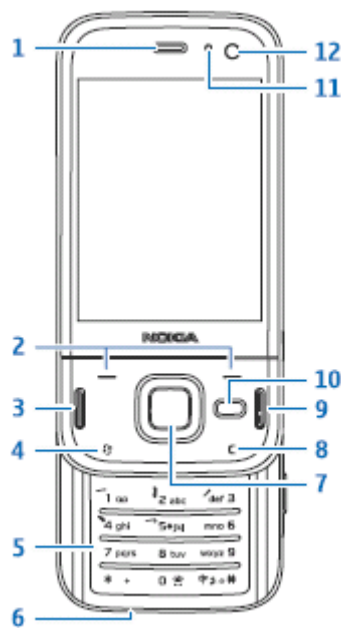


Figure 3-6

Please use the navigation button to select the channel first and then click the left button, you can see an interface is shown as in Figure 3-7.

If you want to switch to another channel, please use the navigation button to select the camera item, then click navigation button to go back to Figure 3-5.



Figure 3-7

### 3.5 PTZ Control

Use the navigation button to select the PTZ item and then click the navigation button; you can see the following interface. See Figure 3-8.

Use the navigation button to select the operation button you desire and then click the navigation button again; you can realize the corresponding function.

In the full-screen mode, you can use the navigation button directly to control the PTZ direction.



Figure 3-8

### 3.6 Exit

Click Right button, you can see the following interface. See Figure 3-9.

Use the navigation button to select the Yes button; you can exit the mobile phone monitor software.



Figure 3-9

**Note**

**Slight difference may be found in user interface.**

**All the designs and software here are subject to change without prior written notice.**

**Please visit our website for more information.**