



REMOTE NIGHTLIGHT
NR868

USER MANUAL

USER MANUAL CONTENTS

Contents

Introduction

Key Features

 Front View

 Back View

Safety And Care

 Safety Precautions

 Caring For This Product

Getting Started

 Product Overview

 Package Contents

 Batteries

 AC Adaptor

Nightlight

 Activating The Nightlight Using The Mode Button

 Activating The Clock Backlight Using The Control Button

 The Code Switch

 The Channel Switch

 + Light - Rotary Knob

 Reset Button

Technical Specifications

Troubleshooting

Notices

 Statement Of Responsibility

About Oregon Scientific

EC-Declaration Of Conformity

<<ALL PAGE NUMBERS TO BE INSERTED ONCE PAGEMAKER LAYOUT HAS BEEN DONE IE FINAL VERSION>>

INTRODUCTION

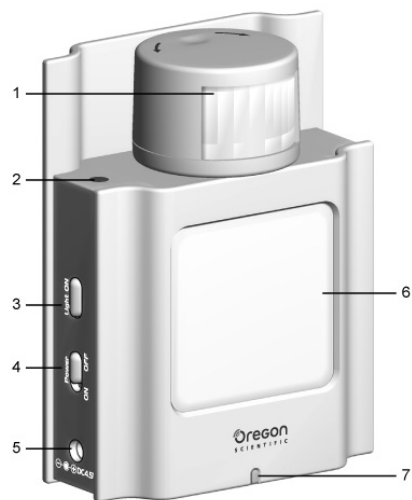
Thank you for selecting the Oregon Scientific™ Remote Nightlight. This device is designed as an accessory for the RF Wall Clock (JMR868). The remote nightlight supports the following functions:

- Continuous nightlight display.
- Sensor activated nightlight display – lights up for 20 seconds when it detects movement in a dark room.
- Simultaneously activated nightlight and clock backlight by the sensor.
- Remotely activated clock backlight – lights up for 10 seconds when the Light ON button on the nightlight is pressed.
- Wall mount and table stand.

Keep this manual handy as you use your new product. It contains practical step-by-step instructions, as well as technical specifications and warnings you should know.

KEY FEATURES

FRONT VIEW



1. Rotary Motion Sensor

- Detects motion and activates the nightlight and clock backlight in accordance with the settings used.
- Twist the knob to direct the sensor to the position you want.

2. Light Sensor

- Detects the light intensity of the environment.

3. Light ON

- Press to turn the clock backlight ON for 10 seconds remotely.

4. Power – ON / OFF

- Slide to the appropriate setting to turn the battery or AC power ON or OFF.

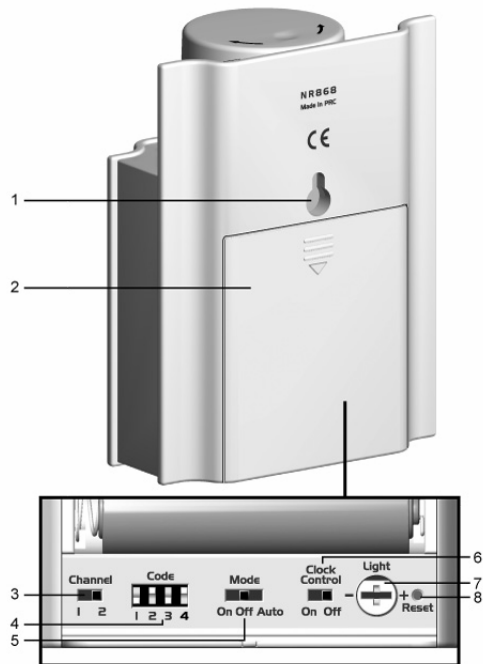
5. 4.5V Adaptor Socket

6. Light Panel

- When activated the panel will light up.

7. LED Indicator

BACK VIEW



1. **Wall Mount Hole**
2. **Battery Compartment**
 - Uses 3 x UM-3 / AA 1.5V batteries.
3. **Channel 1 / 2**
 - Slide to select either Channel 1 or Channel 2.
4. **Code switch**
 - Slide to change the Code.
5. **Mode – On / Off / Auto**
 - Slide switch to ON – the nightlight will turn on in a dark room.
 - Slide switch to OFF – the nightlight is turned off.
 - Slide switch to AUTO – the nightlight will only be activated by motion in a dark room.
6. **Clock Control – On / Off**
 - Slide switch to ON – when motion is detected, the clock backlight will be activated.
 - Slide switch to OFF – the clock backlight will not be activated by the motion sensor.
7. **+ Light - Rotary knob**
 - Rotate to adjust the sensitivity of the light sensor.
8. **Reset button**
 - Press to reset the nightlight.

SAFETY AND CARE

SAFETY PRECAUTIONS

Please observe the following safety precautions when setting up and using this product.

- Heat sources – Keep the product away from heat sources, such as radiators, stoves, heaters, and other heat-generating products.
- Water and moisture – Do not use the product in or near water or in high moisture areas, such as a bathroom.
- Power source – The product may be susceptible to power surges. It should be unplugged during severe storms or whenever you will be away for a long time. Only use the type of power source specified in this manual. Do not overload power strips and extension cords, as this can cause a fire hazard.

CARING FOR THIS PRODUCT

To ensure you receive the maximum benefit from using this product, please observe the following guidelines.

- Do not clean any part of the product with benzene, thinner or other solvent chemicals – this may cause permanent damage that is not covered by the guarantee. When necessary, clean it with a damp cloth.
- Keep your product away from hot, humid conditions or strong sunlight.
- Every effort has been made to ensure the highest standards of reliability for your nightlight. However, if something does go wrong, please do not try to repair it yourself – consult your supplier.
- Do not use your product outdoors in the rain, or handle it with wet hands – water can damage electrical equipment.

GETTING STARTED

PRODUCT OVERVIEW

- The nightlight can be set independently to light up in the dark so you can see where you are going.
- The clock and nightlight can also be used together to turn the clock backlight on when you walk into a dark room, or wave your arm from the comfort of your bed. It can do this because the nightlight has 2 types of sensor. One sensor responds to light and the other responds to movement. From the clock unit you can set these sensors to be active during a certain period of time.
- The clock can support up to 2 nightlights.

PACKAGE CONTENTS

When you unpack your remote nightlight, make sure you keep all the packing materials in a safe place, in case you need to later transport the device or return it for servicing.

In the box, you will find:

- Remote Nightlight
- 3 x UM-3 / AA 1.5V Batteries
- 4.5V AC Adapter

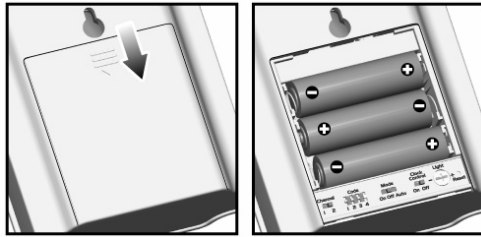
NOTE: Main Clock Unit JMR868 can be purchased separately.

BATTERIES

The nightlight uses:

- 3 x UM-3 / AA 1.5V batteries.

To install the batteries, simply insert them making sure they match the correct polarities (+ and -).



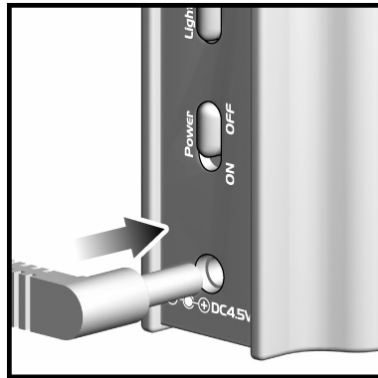
NOTE: It is recommended that you use alkaline batteries with this product for longer performance.

NOTE: Change all the batteries at the same time – it is dangerous to mix old and new batteries. Protect your environment by taking exhausted batteries to authorized disposal stations.

The LED indicator on the motion sensor will flash in red when the batteries are low.

AC ADAPTOR

The 4.5V AC adaptor connects to the nightlight unit as shown below.



NOTE: The nightlight has a **Power ON / OFF** switch to help conserve power. Use the AC adaptor when using the nightlight for long periods of time. The batteries are a good power source for back-up usage.

NIGHTLIGHT

ACTIVATING THE NIGHTLIGHT USING THE MODE BUTTON

The nightlight can be activated independently to the clock unit. You can set the nightlight to the following options:

1. Nightlight On – When the room is dark the nightlight will stay on.
 - Slide the **Mode** button to **On**.
2. Nightlight Off – The nightlight stays off all the time.
 - Slide the **Mode** button to **Off**.
3. Nightlight Auto – When the nightlight detects motion in a dark room, it will light up for 20 seconds.
 - Slide the **Mode** button to **Auto**.

NOTE: When the motion sensor on the nightlight is turned on, it needs approximately 2 minutes to warm up before giving a response.

ACTIVATING THE CLOCK BACKLIGHT USING THE CONTROL BUTTON

You can control the backlight of the clock through the nightlight. You can set the backlight to the following options:

1. Control On – The clock backlight is controlled by the activation of the nightlight.
 - Slide the **Clock Control** switch to **On**.
2. Control Off – The nightlight does not control the clock backlight.
 - Slide the **Clock Control** switch to **Off**.

NOTE: See the **Clock Backlight** section in your Wall Clock (JMR868) Manual, which shows you how to set the nightlight sensors to be activated at times specified by you.

THE CODE SWITCH

The **Code** switch on the nightlight must be set to the same setting as the Code setting on the main unit. The Code allows the nightlight to recognize the main unit's settings.

THE CHANNEL SWITCH

Up to 2 nightlights can be linked to 1 wall clock. By setting 1 nightlight to Channel 1 and the other to Channel 2, the clock display can tell you which sensor has been activated by flashing "ch. 1" or "ch.2" on the display.



+ LIGHT - ROTARY KNOB

The light sensor's level of sensitivity can be adjusted. Turn the **Light** rotary knob towards + to make it more sensitive to light or - to make it less sensitive to light.

RESET BUTTON

Insert a thin blunt instrument into the hole below **Reset** to return to the default settings.

TECHNICAL SPECIFICATIONS

TYPE	DESCRIPTION
Remote Unit Dimensions	
L x W x H	88 x 43 x 112 mm (3.46 x 1.69 x 4.41 inches)
Weight (without battery)	140 g (0.31 lbs)
Remote Unit	
Motion Sensor Coverage Distance	Approx. 5 metres
Motion Sensor Warm-Up Time	Approx. 2 minutes after power-on
RF Frequency	433 MHz
	30 metres (98 feet) with no obstructions
Power	
Remote Unit	3 x UM-3 (AA) 1.5V batteries or 4.5V AC Adaptor

NOTE: It is recommended that you use alkaline batteries with this product for longer performance.

NOTE: Design and specifications are subject to change without notice.

TROUBLESHOOTING

PROBLEM	SYMPTOM	REMEDY
Remote nightlight	Does not activate the backlight	1. Adjust batteries / AC adaptor 2. Check Control Clock switch, is set to On 3. Check the Code switch on the nightlight matches the main unit Code display

NOTICES

STATEMENT OF RESPONSIBILITY

Oregon Scientific will not be held liable for any bodily injury, death, property damages, or any other claims of whatever nature resulting from the misuse or negligence of the product, whether intentional or unintentional.

Oregon Scientific will not be responsible for any deviations in the usage of the device from those specified in the user instructions or any unapproved alterations or repairs of the product.

ABOUT OREGON SCIENTIFIC

<Please insert texts>

EC-DECLARATION OF CONFORMITY

<Please insert texts>



REMOTE NIGHTLIGHT
MODEL: NR868
USER MANUAL