



The  
**Uni-Max**  
Line  
By D & D Marine Enterprises Inc.

## TERMINATOR II

D & D Marine Enterprises Inc. , 176 Tracy Lane, Bagdad KY 40003

502-747-8562

[www.danddmarine.com](http://www.danddmarine.com)

# Parts Diagram

Check this diagram against your parts



# **PLEASE READ THIS FIRST**

**PLEASE READ THE ENTIRE MANUAL BEFORE BEGINNING TO ASSEMBLE YOUR SKIMMER.**

**CAREFULLY STUDY THE PHOTOGRAPHS, YOU MUST PAY SPECIAL ATTENTION TO THE PHOTOS TO MAKE CERTAIN THAT YOU HAVE THE PROPER PARTS, AND THAT WHEN ASSEMBLED THE ASSEMBLY LOOKS EXACTLY AS IN THE PHOTOS.**





**STEP 1 -** Find all of the parts shown in the photo . Make certain **ALL** threads are tefloned. Separate the union into two pieces as shown in photo.

**STEP 2 -** Using supplied teflon thread tape, wrap **ALL** threads as shown below. Start at the bottom of the thread and wrap in the direction shown below.



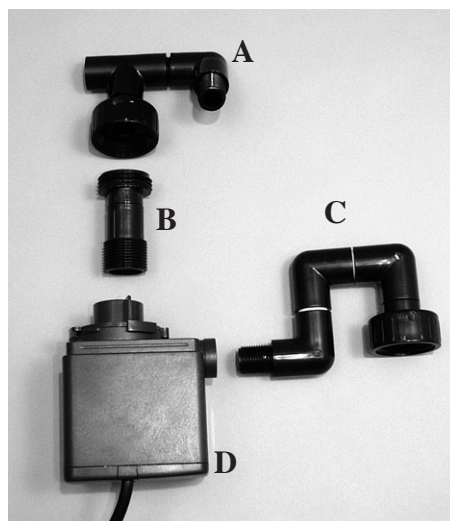
**STEP 3 - (BELOW)** Thread the threaded elbow onto the male thread at the bottom of the skimmer body. The elbow should be facing up when tight. **MAKE CERTAIN TO TEFLON THE THREAD FIRST.**



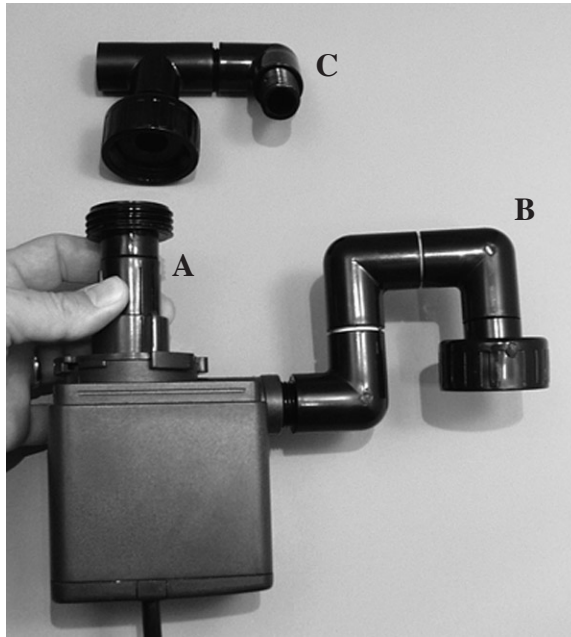
**STEP 4 - (RIGHT)** Thread the venturi assembly into the elbow installed in step 3, as shown. Be certain to teflon the thread first. The venturi should be vertical when done.



**STEP 5 -** Gather all of the parts shown in the photo (right), make certain **ALL** threads are tefloned.



**STEP 6** Thread part “A” into pump intake, use teflon tape. Also thread part “B” into pump outlet, again use teflon on threads. Thread part “C” onto skimmer body as shown in photo (far right).



**STEP 7** While supporting the weight of the pump, connect the locking collar “D” to the pump.



**STEP 8** Carefully turn the pump (you may have to loosen ring “D” ) until the outlet pipe is aligned over the top of the venturi. Thread the lock ring in place and snug both lock rings.





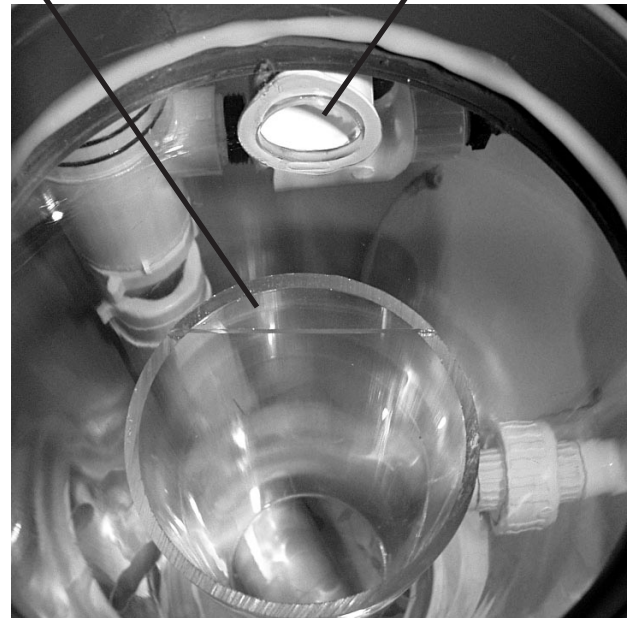


### STEP 9

Remove the Black retaining ring and remove the skimmer top. Remove any packing material and if not installed insert the skimmer core tube as shown in the photo to the left.

**NOTE:** When inserting the core, align it so that the lip is directly under the outlet hole as shown below.

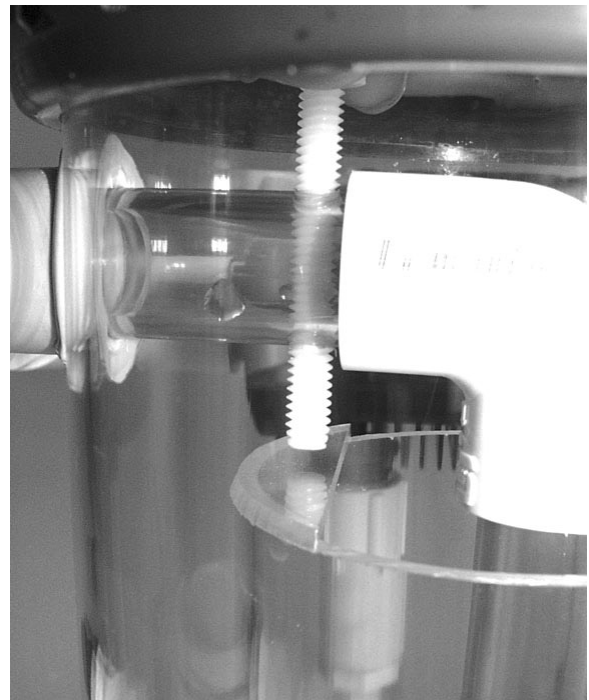
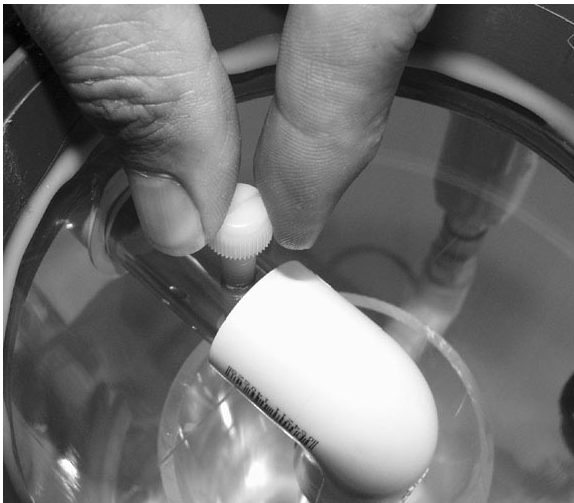
**Lip**



**STEP 10 -** Insert the return intake tube. This presses into the back of the external fitting as shown below.



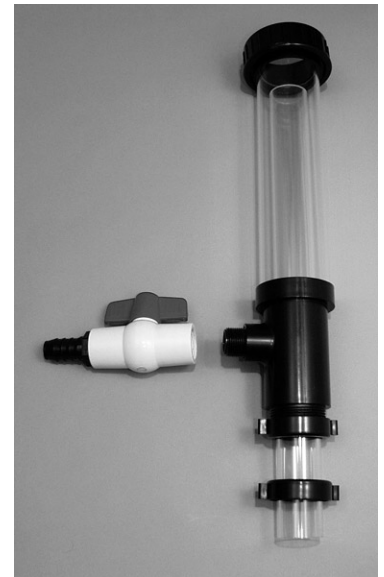
**STEP 11 -** Gently screw down the nylon screw until it just contact the plastic lip as shown below and right.



**STEP 12 - Place top on skimmer and thread on lock ring. Only tighten very gently, pressure is not required and will only make removal more difficult. Photo below.**



**STEP 13 - Gather the parts shown in the photo to the right.**



**Insert tube into body as shown on the left. Secure by threading lock ring onto body. Only hand tight PLEASE. (shown below)**

**STEP 14 - Thread 3/4" ball valve (larger of two valves supplied) onto the outlet fitting. Make certain to teflon the threads. Note, the 3/4" nipple may have to be threaded into the valve first.**



**STEP 15 - Thread 1/2" ball valve onto inlet fitting as shown below. Make certain to teflon threads.**



**STEP 16 - Press fit the waste drain onto the waste outlet at the top of the skimmer. Connect hose and place into a waste container. (left). Attach air intake to venturi, make certain to keep intake high to prevent water from leaking out during a shut down. (right)**





**STEP 17** - The water level in the unit is controlled by adjusting the overflow tube height. This is done by loosening the bottom nut and sliding the clear tube up or down as shown below. Preset the water level by setting the tube level with the bottom of the decal as shown to the right.



**STEP 18** - The outflow tube can be moved up or down by loosening the upper nut and sliding as shown below. The position may be turned to any direction and the height may be adjusted. The outflow may be hard piped if desired or using hose. This water must return into a sump.



## Final connections

A 300 gph powerhead pump (Maxijet 1200 for example) must be hooked up to the water inlet assembled in step 15. The valve is used to control the process water flow rate through the unit. The water is usually pumped from a sump. Hook up the supplied air line to the venturi and run it to the top of the unit to prevent water spitting out of the air intake when power is off. Make certain that the return water valve (shown on the right) is returning to the sump, and the valve is wide open. Make certain the waste hose is in a waste container. Use the supplied 1/2" x 18" hose and place it into a 1 gallon milk jug or some container.

## Start up

Plug in the small 300 gph pump bringing water from the sump into the skimmer first. As the skimmer fills check all of your connections for leaks. The skimmer will fill until the water reaches the top of the overflow tube preset in step 17. Once water is flowing back into the sump plug in the main pump. The pump may take a few seconds the first time to prime itself. If it does not prime itself then suck air out of the venturi air intake line. The venturi should begin to force air into the skimmer. By slowly closing the large outlet valve, shown in step 18, raise the water level about 1 to 2 inches above the black plastic shown in the step 18 photo. This prevents water noise as the unit flows back into the sump. You may also adjust the water level in the concentrator top shown in step 17. By simply moving the 1 1/2" tube preset to the decal in step 17 you will change the water level. This effects how wet or dry your foam will be. We recommend the water level be approximately at the top of the decal. Fine adjustment can be done with the water inlet valve.



# Limited Lifetime Warranty

**Your D & D Marine Enterprises product has been built to the highest quality and standards. It should be treated with the same care as any fine instrument.**

## Limited lifetime warranty

If your D & D Marine Enterprises Inc. products has been manufactured using UniMax technology. ( This will be indicated on box labels as well as instruction manuals.). D & D Marine Enterprises will warrant any UniMax welds to be free from defect or leaks for the lifetime of the product and to the original purchaser. D & D Marine will repair or replace ( at its option ) your product free of charge within the first year. During the remainder of this warranty a fee will be charged for the cost of return shipping only.

## 5 YEAR PRODUCT WARRANTY

Your D & D Marine Enterprises product is warranted to be free of defects in workmanship and materials for 5 years from date of purchase. This warranty applies only to products purchased from an authorized dealer. In case of product defect in either workmanship or materials, D & D Marine will repair or replace ( at its option ) your product free of charge within the first year. The following four years A fee will be charged for the cost of return shipping only.

## WHAT YOUR WARRANTY DOES NOT COVER

Your D & D Marine product warranty does not cover damage or failure resulting from: normal wear, accidents, misuse or abuse, lack of reasonable care, lose of parts, abnormal usage, faulty installation, improper maintenance, or the alteration or affixing of any unauthorized attachments. Your warranty does not extend to costs of removal or reinstallation of the product. Nor does it cover any consequential damage.

## HOW TO OBTAIN WARRANTY SERVICE

**IF WARRANTY SERVICE IS REQUIRED, SEND YOUR PRODUCT WITH THE ATTACHED REGISTRATION CARD. YOU MUST FILL IN THE SERIAL NUMBER ON THE CARD FOR WARRANTY SERVICE TO BE PROVIDED. PROOF OF PURCHASE MUST BE ATTACHED WITH A CLEAR DATE OF PURCHASE. IF THE UNIT IS BEYOND THIS FIRST YEAR OF WARRANTY SERVICE A CHECK FOR \$15.00 MUST BE INCLUDED TO COVER RETURN SHIPPING.**

D & D MARINE ENTERPRISES INC.  
176 TRACY LANE  
BAGDAD KY 4000  
502-747-8562  
WWW.DANDDMARINE.COM

## WARRANTY SERVICE CARD (Return with product for service)

Name; \_\_\_\_\_ Phone number (day time) \_\_\_\_\_

Street; \_\_\_\_\_ City; \_\_\_\_\_ State; \_\_\_\_\_

Zip Code; \_\_\_\_\_ Store where purchased & Address \_\_\_\_\_

\_\_\_\_\_