

Original instructions centrifugal pump JCE



INDEX

1. HEALTH AND SAFETY _____ 3

- 1.1. Note on safety
- 1.2. Warning devices
- 1.3. Warnings

2.SAFETY OF MACHINERY _____ 4

- 2.1. Rebuilding of machine
- 2.2. Personnel requirements
- 2.3. The manufacturer
- 2.4. Marking
- 2.5. Noice
- 2.6. Safety notes

3. COMPONENTS _____ 5

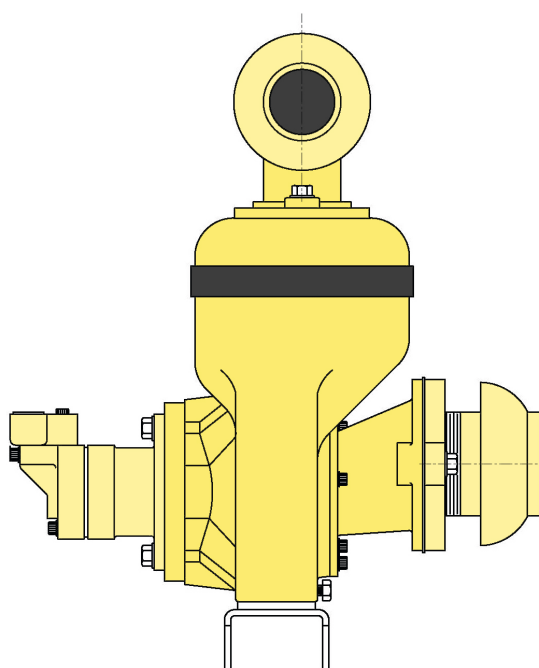
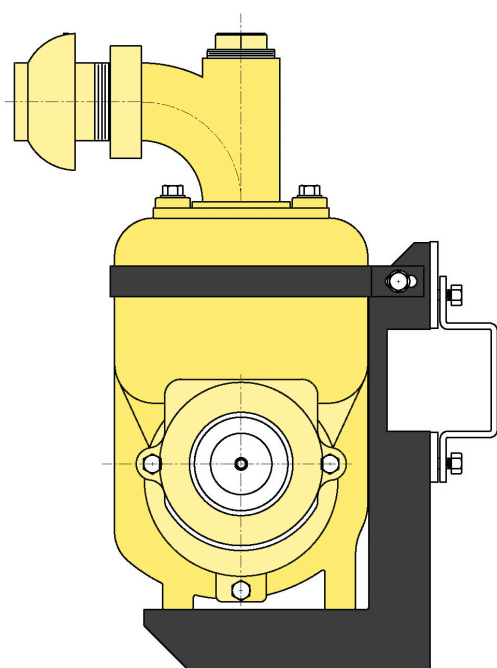
4. PREPARING FOR START _____ 6

- 4.1. Filling the pump
- 4.2. Running
- 4.3. Emergency stop
- 4.4. Recovering after Emergency
- 4.5. Operator's maintenance

5. MAINTENANCE INSTRUCTIONS _____ 7

6. SPAREPARTS _____ 8

7. DECLARATION OF CONFORMANCE _____ 9



1. HEALTH AND SAFETY

This user manual contains instructions for the daily work of the equipment to be operated and used by the operator.

Operator's manual should always be available to the person or operators of the equipment.

It is important to:

- Operator Manual and other applicable documents are preserved throughout the life of the equipment.
- Operator Manual and other applicable documents included as part of the equipment.
- This user manual is forwarded to other users of the equipment.
- Operator's Manual must be updated at any additions or changes to the equipment.
- Operator's Manual describes the methods used in the use of the equipment..

1.1 Note on safety

Before you start using the equipment and performing maintenance or servicing this equipment, please read the relevant parts of the instruction.

Take into account all Danger, Prohibition, Obligation and notes signs mentioned in the manual. Serious personal injury and machine damage can occur unless the information noted.

The machinery is designed for use by a single operator.

Consider all electrical equipment energized.

Consider all the hoses and pipelines under pressure.

Service and maintenance of equipment / machine, make sure the electricity supply and hydraulics are broken and that the fuses are broken. The machine must be vented and the safety switch be locked.

Service and maintenance should only be performed by qualified service and maintenance personnel.

Follow the instructions regarding maximum load, see the decal on the equipment and technical data.

1.2 Warning devices

Annual inspection of warning devices and protective devices shall be performed, ie. control of its function, and status.

1.3 Warnings

Danger, Warning, Precautionary and NOTE have the following meaning in this manual (see photos below).



DANGER!

Ignoring this information will result in immediate danger to life!



BAN!

Prohibited action that is associated with death or serious injury!



IMPOSITION!

Correct use of personal protective equipment or other aids.



NOTE

Information that requires extra attention!

2. SAFETY OF MACHINERY

The machine is labeled with a CE mark, see 2.4, meaning that it is designed, manufactured and described in accordance with the EU Machinery Directive 2006/4/EC.

2.1 Rebuilding of machine

If the machine is rebuilt or supplemented with other parts that the manufacturer does not approve, do not apply the CE mark for the parts that change the machine's function.

Warning labels and CE mark on machine must be clearly visible. If the machinery with warning label is replaced, then the new warning labels installed in the same place as before.

Damaged decals and CE mark must be replaced immediately.

If the machine is rebuilt or added to it is very important that this instruction immediately completes/adjusted with the necessary illustrations, photographs and texts.

2.2 Personnel requirements

To avoid injury and machine damage operations staff shall be especially instructed or trained according to the manufacturer's instructions. Operators and operating personnel may only administer the parts they have been instructed or trained.

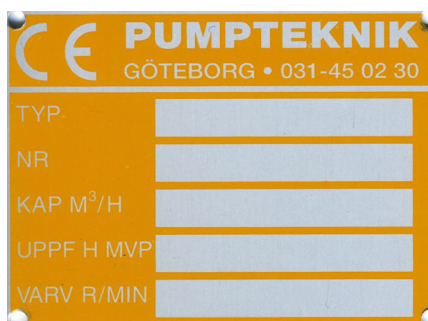
All controls and keys shall only be operated with hands, that they should never be activated by means of any kind, unless otherwise provided.

2.3 The manufacturer

This machine is made by:
Pumptechnik AB
Box 9034
SE-400 91 Göteborg
Sweden

2.4 Marking

This machine is equipped with the following marking:



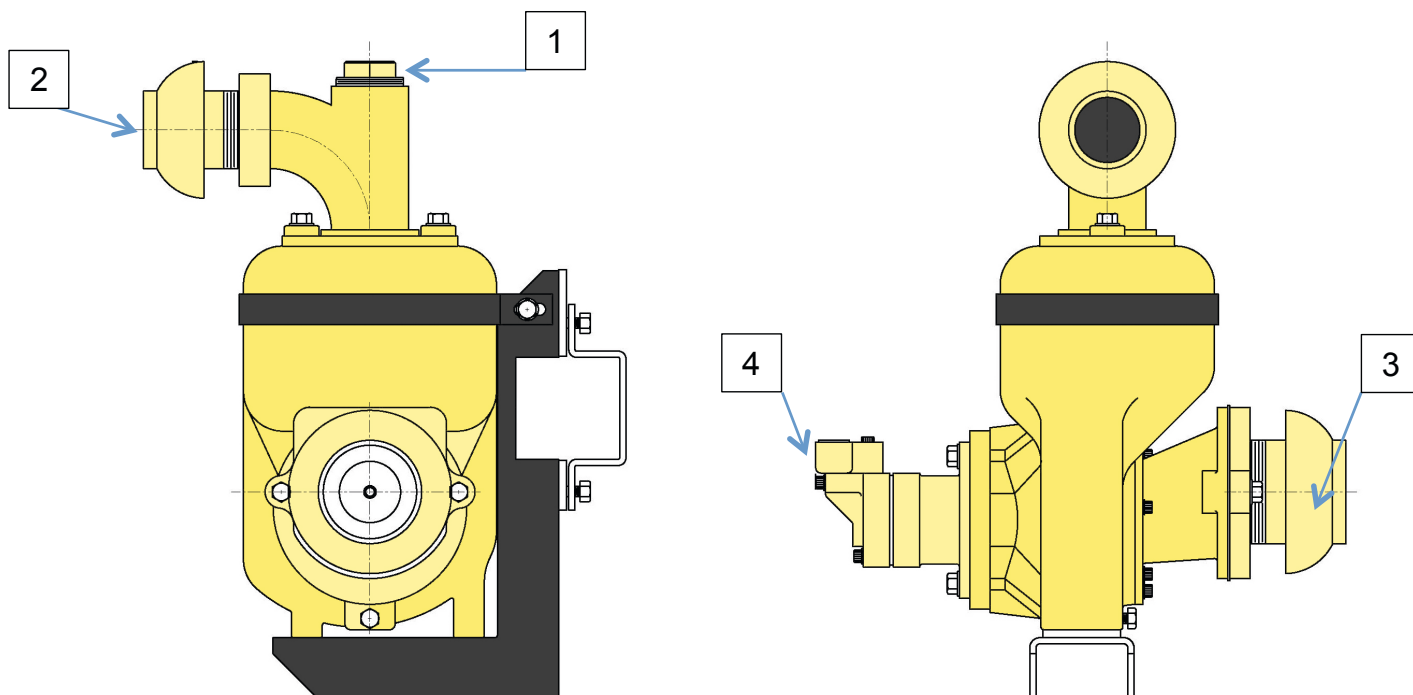
2.5 Noise

This machine has a continuous A-weighted sound pressure level below 70 dB (A).

2.6 Safety notes

- The machine may only be used by trained professionals, and may only be used when the user has read and understood the contents of the current user description.
- Use the machine to the predetermined purposes and only with the installed protection devices. All applicable safety regulations must be observed.
- The daily maintenance work must be performed by trained personnel.
- Electrical work must be performed by a trained professional.
- Work on energized or pressurized parts is not allowed.
- Rebuilds, repairs, and modifications to the machine may only be performed under the applicable safety regulations.
- When replacing spare parts use original spare parts.
- Safety instructions concerning the hydraulic unit please see its documentation.
- The pump should always be filled with the media before start!

3. COMPONENTS



1	Filling cap
2	Outlet
3	Inlet
4	Hydraulic engine

4. PREPARING FOR START

Install suction and discharge hose

Verify that the pump is filled with water or other medium to be pumped (see 4.1).



NOTE!

The pump is filled with water before commissioning.

Check that the hydraulic connections are properly connected.

4.1 Filling the pump



NOTE!

The pump is filled with water before commissioning.



Read the manual before using the machine.



Eye protection must be used!



Wear gloves!

- Check that the pump is not in operation.
- Open the filler plug .
- Fill the water / fluid so that the entire pump casing is filled.
- Refit the filler plug.

4.2 Running

For operation of the pump, refer to the hydraulic system documentation.

4.3 Emergency stop

For emergency stop of the pump, refer to the hydraulic system documentation.

Controlle that the pump and all its parts are intact, in good shape before restart, see point 4.

4.4 Recovering after Emergency

To reset the emergency stop, please refer to the hydraulic system documentation.

4.5 Operator's maintenance

See JCE Maintenance instructions Appendix 1 of this manual.

5. MAINTENANCE INSTRUCTIONS

Before starting the motor make sure that

- the casing is filled with water.
- the hoses are intact.
- the connections are tight and properly connected.
- the suction strainer is mounted and thoroughly.



NOTE!

The pressure outlet can be set in the desired direction.

After finishing pumping drain the pump and hoses from water, ensure that clay and sludge not remain in the connections, valve or casing. Hardened clay or similar can cause stoppages.

Slow evacuation may be due to:

1. Too little water in the casing.
2. Untight connections.
3. Broken suction hose.
4. Untight check valve.
5. Worn impeller.

A clean and maintained pump malfunctions rarely.

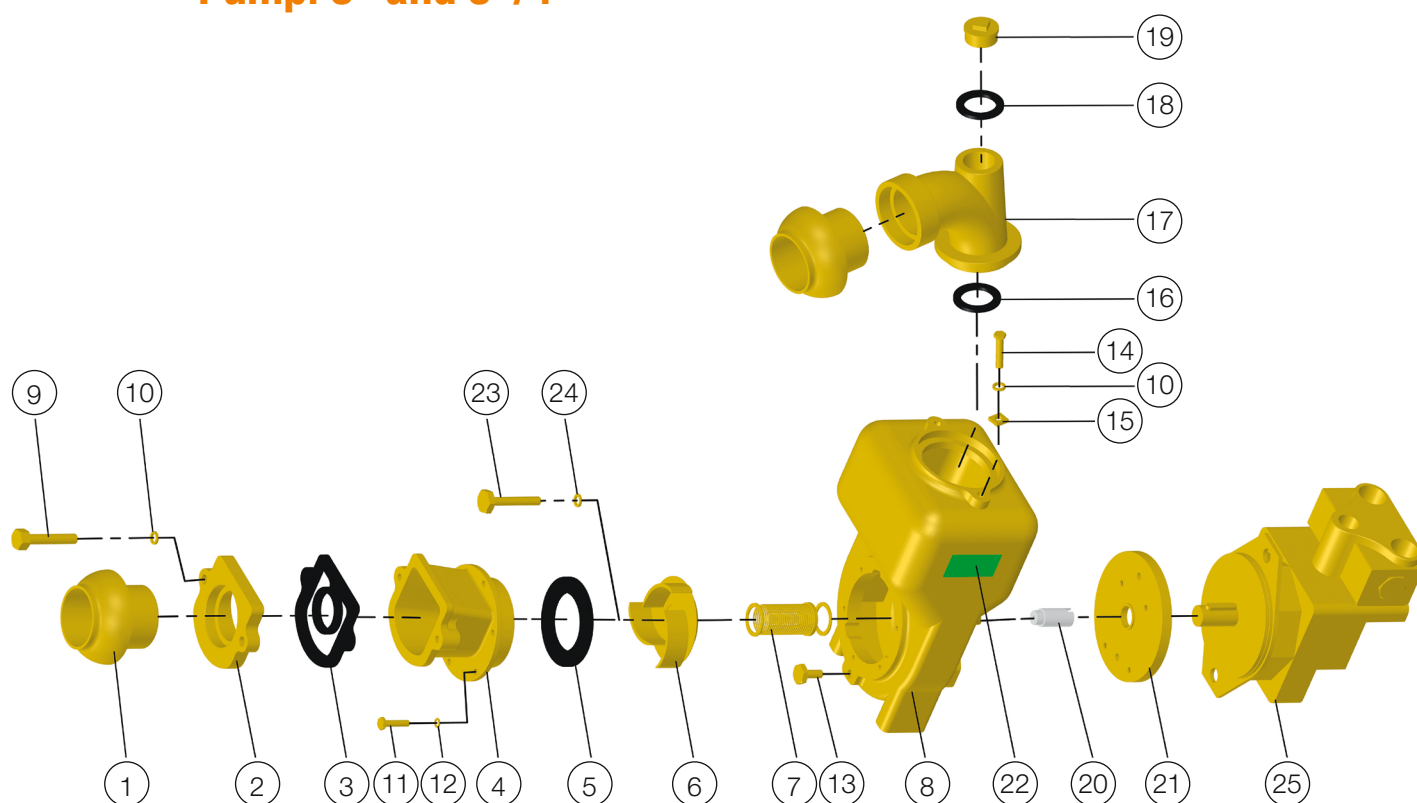


NOTE!

Do not disassemble the hydraulic motor, send it to Pumptechnik for action.

6. SPAREPARTS

Pump: 3" and 3"/4"



Pos.no.	Description	Quantity	Order no.
1	Connection	1	3"- C1
2	Intermediate part	1	3"- C2
3	Non Return Valve	1	3"- C3
4	Suction Casing	1	3"- C4 3"/4"- C4
5	Gasket	3	3"- C5
6	Impeller	1	3"- C6 3"/4"- C6
7	Mechanical seal	1	3"- C7
8	Casing	1	3"- C8
9	Bolt	2	3"- C9
10	Washer	6	3"- C10
11	Bolt	6	3"- C11

Pos.no.	Description	Quantity	Order no.
12	Washer	12	3"- C12
13	Drain plug	1	3"- C13
14	Bolt	2	3"- C14
15	Lock	2	3"- C15
16	Gasket	1	3"- C16
17	Pressure pipe incl. connection	1	3"- C17
18	Gasket	1	3"- C18
19	Filling plug	1	3"- C19
20	Stub shaft	1	3"- C20
21	Support frame	1	3"- C21
22	Plate incl. rivets	1	3"- C22
23	Bolt	1	3"- C23
24	Washer	1	3"- C24
25	Hydraulic motor	1	3"- C25

7. DECLARATION OF CONFORMANCE

Acc. to annex 2:1A

The manufacturer:

Pumpsteknik AB
Box 9034
SE-400 91 Göteborg
Sweden

declares that the following product:

Serial no:

Year of manufacturing:

is manufactured in accordance with the following product directives:

2006/42/EG

And in conformity with the following harmonized standards:

SS-EN-ISO 12100-2010

and in accordance with the following national standards and specifications.

Machine according to Annex 4: -

Notified Body number: -

Notified Body: -

Machine EX class: -

Place: Askim

Date: 2014-03-07



Bo Svensk

Responsible for the compilation of documentation within the EU:

Roger Gustafsson

The manufacturer:

Pumpsteknik AB
Box 9034
SE-400 91 Göteborg
Sweden

Phone: +46 31 89 48 80

E-mail: info@pumpsteknik.com

Website: www.pumpsteknik.com

Original instructions centrifugal pump

JCE

Pumptechnik

Pumpar – Blås-/Vakuumaggregat – Pumpstationer

Pumptechnik AB

Askims Verkstadsväg 1
SE-436 34 Askim
Sweden
Tel: +46 31 45 02 30
Fax: +46 31 45 42 63

Pumptechnik AB

Pajalagatan 56
SE-162 65 Vällingby
Sweden
Tel: +46 730 72 71 10