

Owner's Manual: LiftPak LP1000

Commercial Waste Compactor

100136 Rev E
ECO 12-0150
May 2014

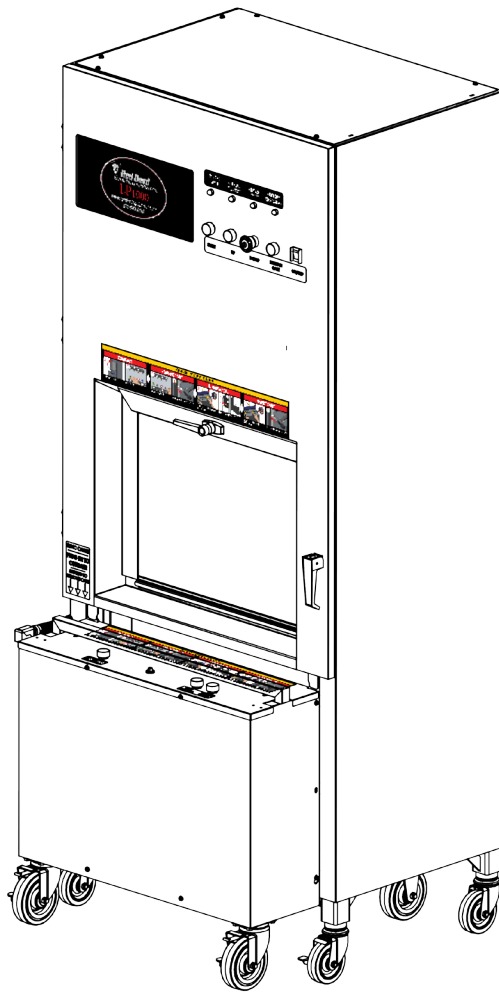





TABLE OF CONTENTS

1. Safety Information	3	7. Switch Locations	18
1.1 Safety Precaution Labels	3	8. Wiring Diagrams	19
1.2 Safety Precaution Summary	5	9. Exploded Views	22
2. Introduction	6	9.1 BOTTOM SURFACE ASSEMBLY	22
2.1 Application	6	9.2 MAIN FRAME ASSEMBLY	23
2.2 Specifications	6	9.3 MAIN FRAME ASSEMBLY—PANELS	24
3. Installation	7	9.4 LIFT CART ASSEMBLY—CASTERS AND CHAIN	25
3.1 Unpack the Compactor	7	9.5 LIFT CART ASSEMBLY—MOTOR AND BATTERY	26
3.2 Unpack the Cart	8	9.6 LIFT CART ASSEMBLY—SKINS AND HANDLE	27
3.3 Install Trash Bags	9	9.7 RAM PLATE ASSEMBLY	28
4. Operation	10	9.8 MAIN DOOR ASSEMBLY	29
4.1 Control Panel	10	9.9 LOAD DOOR ASSEMBLY	30
4.2 Compact Trash	11	9.10 LIFT TRAY ASSEMBLY	31
4.3 Remove the Cart	11	10. Ordering	32
4.4 Empty the Cart	12	Replacement Parts	32
4.5 Replace Trash Bags	12	11. Warranty	33
4.6 Insert the Cart	12	Notes	34
4.7 Instruction Labels on the Machine	13		
5. Care and Maintenance	14		
5.1 Daily Maintenance	14		
5.2 Bi-Weekly Maintenance	14		
5.3 Monthly Maintenance	14		
5.3 Semi-Annual Maintenance	15		
6. Troubleshooting	16		


1. SAFETY INFORMATION

Review this owner's manual and read all warning labels on the machine prior to use.

The three main safety notifications used in this manual and on the warning labels are **WARNING**, **CAUTION** and **NOTICE**. They have specific meanings and indicate the potential dangers from misuse of the machine.

	<p>“WARNING!” indicates a hazardous situation, which, if not avoided, could result in death or serious injury. These serious injuries could include permanent loss of function or significant disfigurement, disability, considerable pain and suffering, amputations, severe burns, and loss or impairment of vision or hearing. Take all necessary precautions to avoid unnecessary injury.</p>
	<p>“CAUTION!” indicates a hazardous situation, which, if not avoided, could result in minor or moderate injury.</p>
	<p>“NOTICE” indicates practices that do not involve physical injury but may damage the machine.</p>

1.1 Safety Precaution Labels


	<p>WARNING Do not remove access cover except for servicing; Follow lockout/tagout procedures in owners manual.</p>
	<p>ADVERTENCIA No quite la cubierta de acceso, excepto para mantenimiento y siga los procesos de senalización del manual del usuario. Siga los procedimientos de bloqueo/etiquetado del manual del usuario.</p>
	<p>AVERTISSEMENT Ne retirez pas acces couvrir sauf pour l'entretien de la machine; Suivre la procédure d'isolation/consignation procedures dans le manuel utilisateur</p>



LOAD DOOR IS HEAVY.
DO NOT ALLOW DOOR TO DROP FREELY.
DOING SO MAY CAUSE PERSONAL INJURY.

LA PUERTA DE CARGA ES PESADA.
NO LA DEJE CAER.
HACERLO PUEDE CAUSAR HERIDAS.

PORTE CHARGE EST LOURDE
NE PAS PERMETTRE A' LA PORTE DE TOMBER
FACILEMENT OU DES BLESSURES
PEUVENT SURVENIR



LIFT TRAY MUST BE IN LOWERED POSITION FOR TRANSPORT
ALWAYS STAND BEHIND CART WHEN OPERATING LIFT
CART MUST ALWAYS BE PUSHED (NOT PULLED) DURING TRANSPORT

LA BANDEJA DE ASCENSO DEBE ESTAR EN LA PARTE INFERIOR PARA MEJOR
TRANSPORTE PA'RARSE SIEMPRE DETRA'S DEL CARRITO CUANDO ESTE OPERANDO
CARRITO SIEMPRE SE DEBE EMPUJAR (NO JALE) DURANTE EL TRANSPORTE

LE PLATUAU DE LEVAGE DOIT E'TRE' EN POSITION BASSE POUR LE TRANSPORT
TOUJOURS SE TENIR DERRIE'RE LE CHARIOT QUAND L'E'LE'VATEUR EST EN
OPE'RATION LE CHARIOT DOIT TOUJOURS E'TRE POUSSE' (NON TIRE') PENDANT LE
TRANSPORT

Safety Information, continued...

...Safety Information, continued




WARNING

ADVERTENCIA

AVERTISSEMENT




DO NOT COMPACT PRESSURIZED CANS OR GLASS
Could Cause Physical Injury
NO COMPACTE BOTES PRESURIZADOS O VIDRIO
Pueden causar dano fisico
NE COMPACTE PAS BIDONS PRESSURISE' OU EN VERRE
Pourrait provoquer des blessures physiques



WARNING

ADVERTENCIA

AVERTISSEMENT

MOVING PARTS INSIDE
PARTES EN MOVIMIENTO
PIE'CES EN MOUVEMENT

-Do not open door until machine comes to a complete stop; moving parts inside could cause serious injury.


-No abra la puerta hasta que la maquina se detenga completamente, las partes internas en movimiento pueden causar heridas graves.

-Ne pas ouvrez la porte jusqu'a' ce que la machine est comple'tement arre'te'; pie'ces en mouvement a l'intérieur pourrait provoquer des blessures graves.

NOTICE

NO STORAGE

KEEP AREA CLEAR



WARNING

ADVERTENCIA

AVERTISSEMENT

- Do not compact aerosol, flammable, or combustible materials in this compactor as this could cause physical injury
- Review Owner's Manual before installing or operating
- Use in dry and well-ventilated environment where dust and flammable vapors are not present; risk of physical injury exists if used in hazardous environment
- Do not leave children unattended near compactor; children could engage compactor and be injured
- Disconnect power cord before servicing or cleaning and follow lockout/tagout procedures in owner's manual; failure to disconnect power could cause electric shock and injury
- Do not attempt to repair or replace electrical wires or components; only qualified service representatives should attempt to repair or replace wires

- No compacte aerosol, o materiales inflamables en este compactador pues podría causar daño físico.
- Revise el manual del usuario antes de instalar u operar.
- Utilice en ventilados y secos, donde polvo y vapores inflamables no estén presentes. Riesgo de daños existen si son usados en un ambiente peligroso.
- No deje niños sin atender cerca del compactador; el niño podría encender el compactador y salir lastimado.
- Desconecte el cordón antes de darle mantenimiento o limpiarlo. Siga los procedimientos de bloqueo/etiquetado que aparecen el manual del usuario. No desconectar puede causar un choque eléctrico y daños físicos.
- No intente reparar o reemplazar los cables eléctricos o componentes; solo personal capacitado debe intentarlo

- Ne pas compact en ae'rosol, inflammables ou combustibles dans ce compacteur, car cela pourrait provoquer des blessures physiques
- Avant le fonctionnement et l'installation lisez le manuel de l'ope'rateur
- Utilisation en sec et bien ae're' environnement ou' la poussie're et les vapeurs inflammables ne sont pas pre'sents; le risque de blessure physique existe si utilise' en environnement dangereux
- Ne laissez pas les enfants sans surveillance pre's du compacteur, les enfants pourraient commencer un compacteur et obtenir blesse
- De'brancher l'e'lectricite' fils avant l'entretien ou au nettoyage; suivez la procedure d'isolation/consignation dans le manuel de l'ope'rateur; si fils e'lectriques n'est pas de'connecte', il peut provoquer un cho e'lectrique et de blessure.
- Ne pas tenter de re'parer ou de remplacer les fils e'lectriques et composants; techniciens qualifie's doit re'paraer ou remplacer tous les fils.

Safety Information, continued...

...Safety Information, continued

1.2 Safety Precaution Summary

▲ WARNING! Avoid hazardous situations which, if not avoided, could result in death or serious injury!

▲ DO NOT compact pressurized can or glass. They may explode and could cause the machine to malfunction and could cause physical injury.

▲ DO NOT attempt to replace any damaged electrical wire or components. Improper replacement could result in electric shock and serious injury. Only a qualified service representative should attempt to repair or replace any damaged electrical components.

▲ Review this owner's manual before installing or operating.

▲ The machine must be properly grounded prior to use. In the case of an electrical short circuit, grounding reduces the risk of electric shock by providing an escape wire for the electric current.

▲ The machine's power cord has a grounding wire with an appropriate grounding plug. This plug must be inserted into an electrical outlet that is properly installed and grounded according to all local codes and ordinances.

▲ If you must repair or replace the power cord or plug, do not connect the grounding wire to either flat-blade terminal. The wire with insulation having an outer surface that is green (with or without yellow stripes) is the grounding wire.

▲ Check with a qualified electrician if you don't completely understand these grounding instructions, or if you are not sure whether the machine is properly grounded. **Do not modify** the plug provided; if it won't fit in the outlet, have a proper outlet installed by a qualified electrician.

▲ Disconnect the power cord before servicing, cleaning, or removing any covers

▲ Follow the lockout/tagout procedures of your company.

▲ Do not open the door until the machine comes to a complete stop.

▲ CAUTION! Avoid hazardous situations which, if not avoided, could result in minor or moderate injury!

▲ DO NOT allow the heavy load door to freely drop open. Doing so may cause personal injury and damage to the load door hinges.

▲ DO NOT compact large solid objects such as steel, wood timbers, or concrete blocks. These will result in damage to the hydraulic cylinder and negate the compactor warranty.

▲ Cart must always be pushed (not pulled) during transport. Pull the handle up and push the base of the handle forward. Handle should not fall if positioned correctly.

▲ Always keep the lift tray in a lowered position when transporting. Never transport the cart with the lift tray in a raised position.

▲ Always stand behind the cart when operating the lift.

2. INTRODUCTION

2.1 Application

Congratulations on your purchase of the LP1000 Waste Compactor. Understand your machine's features and proper operation to take full advantage of its capabilities.

Read this entire manual completely before operating the machine.

Keep this manual for future reference.

Always follow all safety instructions!

2.2 Specifications

Unit Size: W 34 in. (86.4 cm) D 32 in. (81.3 cm) H 82 in. (208.3 cm)

Machine Weight: 1500 lb. (680.4 kg)

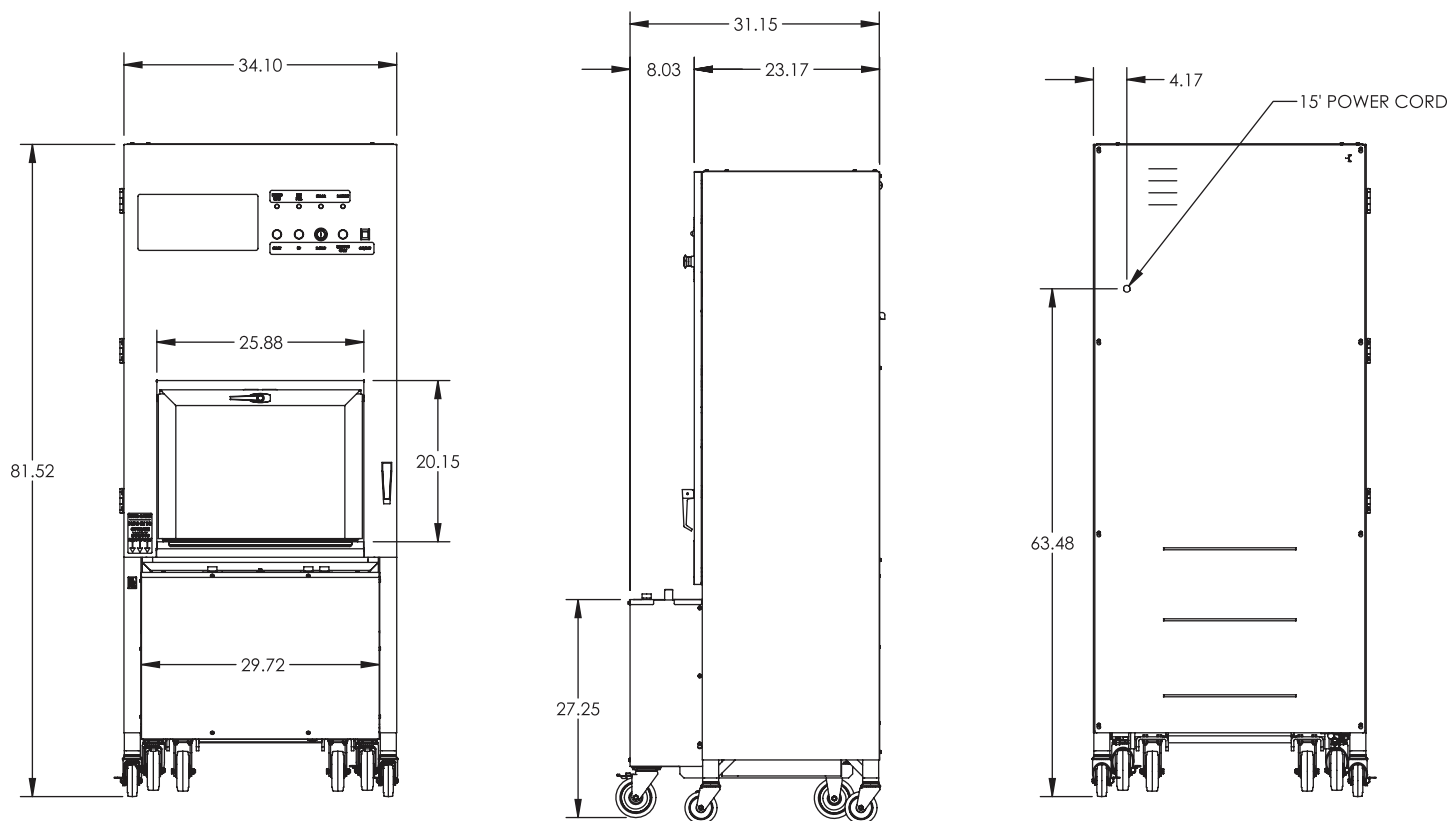
Electric Service: 120 V 20 A

Capacity: 9 ft³

Cycle Time: 25 seconds

Compaction Force: 6500 lb. (min)

Recommended Clearance: Red Devil Equipment Co. recommends 7 ft. of clearance in front of the compactor to allow for maneuvering of the cart.



3. INSTALLATION

3.1 Unpack the Compactor

1. Remove the cardboard sleeve from the pallet.



4. Place a pallet jack under the compactor.

5. Lift the machine approximately 1in. off the floor.



2. Remove the nuts from each of the U-bolts.

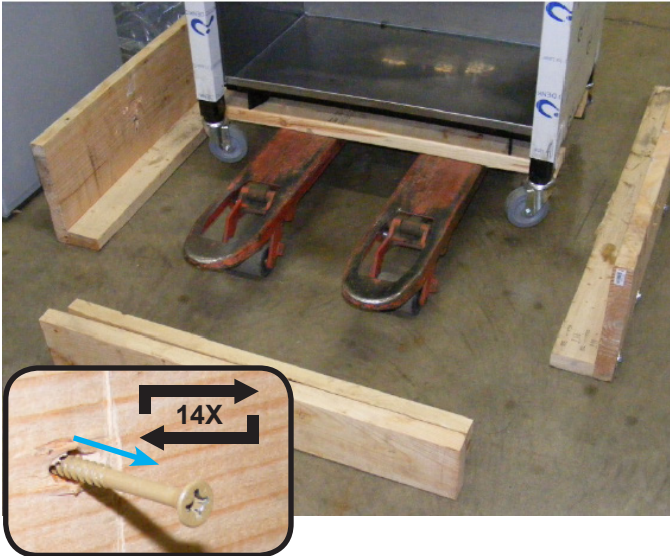
3. Remove the U-bolts.



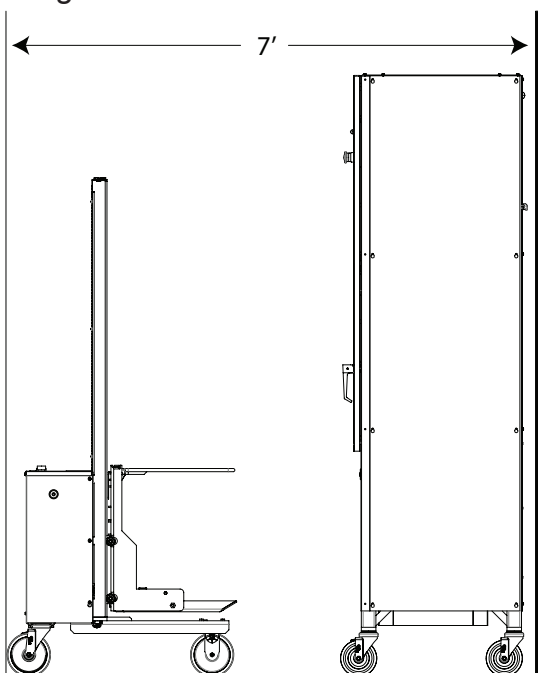
Installation, continued...

...Installation, continued

6. Remove the fourteen wood screws from each side of the pallet.
7. Pull the pallet boards away from the compactor and set aside.



8. Lower the compactor to the ground on its casters.
9. Carefully wheel the compactor into place, allowing 7 feet of clearance.



3.2 Unpack the Cart

1. Remove the cardboard sleeve.



2. Cut the straps that hold the cart to the pallet.



3. Use a 9/16 in. socket or wrench to remove the front and back 2x4s from the pallet.
4. Set the 2x4s on the floor behind the pallet. Set the double stacked 2x4s directly behind the pallet, then the single 2x4, to form a ramp.
5. Back the cart off the pallet using the 2x4s as a ramp.

Installation, continued...

...Installation, continued

6. Set the brakes on the front two casters of the compactor to hold it in place once the compacting unit is in position.
7. Verify that the cart inserts smoothly into the compactor by aligning the red indicator marks on the chain and upright channel (shown at right). The cart should be evenly spaced between the sides of the compactor.



3.3 Install Trash Bags

1. Place the bag rack over the back of the lift plate.
2. Drape the trash bag around all four sides of the bag rack and spread the bag evenly over the lift plate, ensuring the bag loosely touches the lift plate.

NOTE: Avoid tearing the bag. Ensure that the bottom of the bag is not suspended in the air over the lift plate.

3. Insert a second bag inside the first bag following the same procedure to ensure the best liquid control.
4. Push any portion of the bag(s) that is outside of the lift plate to the inside of the lift plate to prevent pinching or tearing of the bag(s) when the cart is inserted into the compactor.

▲ NOTICE: Over time, general wear and tear may cause the cart to fit unevenly into the compactor, or the compactor may shift position slightly on the floor. Should this occur, an optional foot leveling accessory may help. To order, contact Red Devil Equipment Co. at 1-800-543-8722 and reference part number 900069.

4. OPERATION

4.1 Control Panel

A. **ON/OFF:** Press to turn the unit on or off.

NOTE: When the unit is powered on, it goes through a cycle to verify proper functioning. During this time all of the lights on the top row are on. The green battery light should be the only light left on at the end of the phase.

B. **START:** Press to start the compaction cycle. This is operator controlled.

C. **UP:** Press to stop compaction. This moves the ram up to the top (home) of the unit when held. Use when the door is opened and the ram is in the way of inserting trash.

D. **E-STOP:** Press E-STOP to stop the LP1000 immediately. To disengage the E-STOP button, insert the key and turn it. The E-STOP button will pop out. Remove the key.

E. **REMOVE CART:** Press REMOVE CART to empty the LP1000 when the BIN FULL light is on or you wish to remove the cart. Pushing this button moves the components to their home position so the lift cart can be safely removed. When the amber BIN FULL light comes on, press the REMOVE CART button. The cart is now safe to remove.

F. **PLEASE WAIT LIGHT:**

- When this green light is on, the unit is moving the ram during the compaction cycle.
- When the light goes off, other actions can be completed.

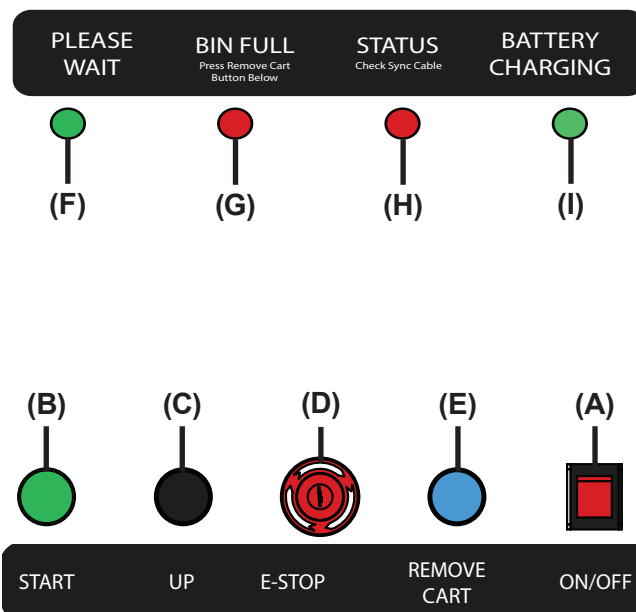
G. **BIN FULL LIGHT:** Indicates that the compactor is full and should be emptied. Compaction will not occur again until the cart is emptied.

H. **STATUS LIGHT:**

- When the light is blinking there is a potential issue. See the trouble shooting section.
- When the light is constant, check the SYNC cable.

I. **BATTERY CHARGING LIGHT:**

- When the light is on, the battery is charged.
- When the light is blinking, the battery is being charged.



Operation, continued...

...Operation, continued

J. QUICK START GUIDE: The quick start label is located just above the load door and on the lift cart top panel. It supplies handy hints on the steps needed to compact, remove the cart, dump waste and insert the cart.



4.2 Compact Trash

⚠ WARNING! EXPLOSION HAZARD! DO NOT compact pressurized cans or glass.

1. Turn the power switch to the ON position after the machine is plugged in and the cart is installed.
2. Review the control panel. If the only light showing is the battery light, the machine is ready for use.

⚠ CAUTION! DO NOT allow the heavy load door to freely drop open. Doing so may cause personal injury and damage to the load door hinges.

3. Load trash through the load door, close the door, and push the START button.
4. Continue placing trash and compacting until the BIN FULL light comes on or to remove the cart. Empty the compactor when the BIN FULL light is on (see section 4.3 *Remove the Cart*).

NOTE: If the load door is opened during the compaction cycle the LP1000 will stop. Close the door and push the start button. The cycle will resume where it left off.

⚠ NOTICE: DO NOT compact large solid objects such as steel, wood timbers, concrete blocks, etc. These will result in damage to the hydraulic cylinder and negate the compactor warranty.

⚠ NOTICE: It is suggested that you not compact large quantities of liquid or liquid type waste such as: Gravy

- Casseroles
- Mashed Potatoes
- Grease
- Cobblers

It is also suggested that you not compact large quantities of containers such as:

- Plastic Bottles
- Tin Cans
- Cardboard Boxes

4.3 Remove the Cart

1. Press the REMOVE CART button. The unit will cycle through a compaction cycle to prepare the cart for removal. The BIN FULL light comes on.
2. Disconnect the Sync cable.
3. Lift the main door handle and turn it 90 degrees counter-clockwise to open the main door.
4. Lift the cart handle.
5. Pull the cart away from the compactor. If you are unable to remove the cart from the compactor, the compactor has been overfilled. Remove some of the compacted waste and try again.



Operation, continued...

...Operation, continued

4.4 Empty the Cart

⚠ CAUTION! Avoid personal injury. Always stand behind the cart when operating the lift.

1. Immediately after removing the cart from the compactor, leave the outside bag draped over the bag rack for transporting to the outdoor container.
2. Lower the lift plate to its lowest position by pushing the down button (red) and safety button (black).
3. At the outdoor container, tie off the bag.
4. Remove the bag rack.
5. Push the cart within a few inches of the outdoor container, but be careful to ensure that there will be no obstruction when raising the cart.
6. Stand behind the cart and lock the caster brakes.
7. Raise the lift plate to its highest position by pushing the up button (green) and the safety button (black) simultaneously.
8. Pull the release handle near the back of the lift plate and allow the compacted trash to fall into the outdoor container.
9. Lock the lift plate back in its normal position using the release handle.
10. Lower the lift plate to its transporting position by pushing the down button (red) and safety button (black).
11. Replace the bag rack and release the caster brake.

4.5 Replace Trash Bags

1. Place the bag rack over the back of the lift plate.
2. Drape the trash bag around all four sides of the bag rack and spread the bag evenly over the lift plate, ensuring the bag loosely touches the lift plate.

NOTE: Avoid tearing the bag. Ensure that the bottom of the bag is not suspended in the air over the lift plate.

3. Insert a second bag inside the first bag following the same procedure to ensure the best liquid control.

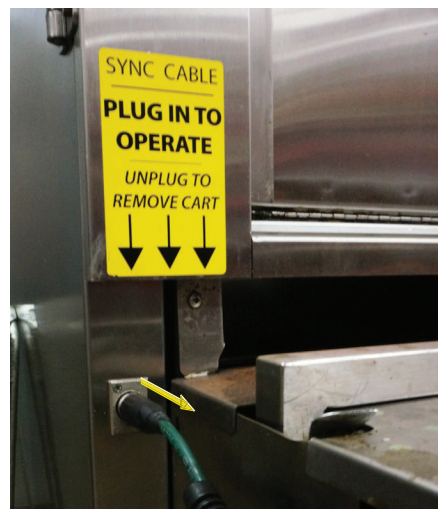
4. Push any portion of the bag(s) that is outside of the lift plate to the inside of the lift plate to prevent pinching or tearing of the bag(s) when the cart is inserted into the compactor.

4.6 Insert the Cart

1. Align the red indicator marks on the chain and upright channel.



2. Drive the cart straight into the compactor firmly.
3. Lower the cart handle into the cart.
4. Close the main door.
5. Close the load door.
6. Insert the SYNC cable into the plug.



Operation, continued...

...Operation, continued

4.7 Instruction Labels on the Machine

START UP

1. Plug power cord into 110 VAC/60 Hz outlet
2. Turn power switch on and twist E-stop so it pops out (all 4 LED's will illuminate after initialization)
3. Make sure sync cable located on left hand side of cart is plugged into main unit
4. Unit is now ready (battery light should flash or remain on)

TO COMPACT

1. Press start button "PLEASE WAIT" LED should illuminate while compacting
2. Opening or closing any door will stop compaction; press start to resume compaction
3. Pressing the up button will stop the compaction process and raise the compaction plate while held down

TO REMOVE CART

1. Press blue "Remove Cart" button
2. Disconnect sync cable located on left side of cart (note: disconnect at compactor, sync cable stays with cart)
3. Open main door
4. Check lift tray position, line up red marking on chain and cart if necessary by pressing black and blue to raise tray or black and green to lower tray
5. Lift handle on cart
6. Pull handle to remove cart from compactor

TO INSERT CART

1. Check lift tray position, line up red marking on chain and cart by pressing pressing black and blue to raise tray or black and green to lower tray
2. Push cart into compactor
3. Return cart handle to down position
4. Close main door
5. Insert sync cable into compactor receptacle
6. Cart will auto-position when pressing start button

TO DUMP WASTE

1. Seal trash bag
2. Remove bag rack
3. Push cart to dumpster
4. Press and hold black and blue buttons to raise tray
5. Pull release handle to release/pivot lift tray and empty the trash
6. Return tray to its flat, locked position
7. Press and hold black and green buttons to lower tray
8. Re-install bag rack
9. Install trash bag

CHARGING CART (IF BATTERY DOES NOT ALLOW FOR UP OR DOWN MOVEMENT AND CART IS NOT POSITIONED IN MACHINE)

1. Close both load door and large door
2. Place cart near compactor so sync cable can be plugged into compactor
3. Battery charge light on compactor should begin to flash
4. Battery fully charged when battery LED stops flashing

ARRANQUE

1. Enchufe el cable de alimentación en un tomacorriente de 110 VCA/60 Hz.
2. Active el interruptor de alimentación y gire la parada de emergencia de modo que el botón salte hacia afuera (los 4 indicadores LED se iluminarán después de la inicialización).
3. Asegúrese de que el cable de sincronización situado en el lado izquierdo del carro esté enchufado en la unidad principal.
4. La unidad está lista (la luz de la batería debe destellar o permanecer encendida).

PARA COMPACTAR

1. Apriete el botón de inicio, el LED "PLEASE WAIT" (Espere) debe iluminarse durante la compactación.
2. Si se abre o cierra cualquier puerta, se detendrá la compactación; apriete el botón de inicio para reanudarla.
3. Al apretar el botón de elevación, se detendrá el proceso de compactación y se elevará la placa de compactación mientras el botón se mantenga apretado.

PARA RETIRAR EL CARRO

1. Apriete el botón azul "Remove Cart" (Retirar carro).
2. Desconecte el cable de sincronización situado en el lado izquierdo del carro (nota: desconéctelo en el compactador, el cable de sincronización permanece en el carro).
3. Abra la puerta principal.
4. Revise la posición de la bandeja de elevación. Si es necesario, alinee las marcas rojas en la cadena y el carro apretando los botones negro y azul para subir la bandeja o negro y verde para bajarla.
5. Levante la manija del carro.
6. Tire de la manija para retirar el carro del compactador.

PARA INSERTAR EL CARRO

1. Revise la posición de la bandeja de elevación; alinee las marcas rojas en la cadena y el carro apretando los botones negro y azul para subir la bandeja o negro y verde para bajarla.
2. Empuje el carro dentro del compactador.
3. Vuelva a colocar la manija del carro en la posición inferior.
4. Cierre la puerta principal.
5. Introduzca el cable de sincronización en el receptáculo del compactador.
6. El carro se posicionará automáticamente al apretar el botón de inicio.

PARA DESCARGAR LA BASURA

1. Selle la bolsa de basura.
2. Retire el bastidor de la bolsa.
3. Empuje el carro dentro del contenedor de basura.
4. Mantenga apretados los botones negro y azul para elevar el carro.
5. Tire de la manija de desenganche para soltar/pivotar la bandeja de elevación y vaciar la basura.
6. Vuelva a ubicar la bandeja en su posición horizontal y fija.
7. Mantenga apretados los botones negro y verde para bajar la bandeja.
8. Vuelva a instalar el bastidor de la bolsa.
9. Instale la bolsa de basura.

CÓMO CARGAR EL CARRO (SI LA BATERÍA NO PERMITE EL MOVIMIENTO ASENTENDNTE O DESCENDENTE Y EL CARRO NO ESTÁ EN LA MÁQUINA)

1. Cierre tanto la puerta de carga como la puerta grande.
2. Coloque el carro cerca del compactador para poder enchufar el cable de sincronización en el compactador.
3. La luz de carga en el compactador debe comenzar a destellar.
4. El LED dejará de destellar cuando la batería esté totalmente cargada.



For instructional "How To" videos please visit:
www.RedDevilEquipment.com

5. CARE AND MAINTENANCE

5.1 Daily Maintenance

1. Cleaning the compaction chamber with a disinfectant cleaner and a soft cloth after each load of compacted waste is removed is highly recommended.

▲ NOTICE: Do not use a scouring pad or abrasive cleanser. Damage to the machine finish will result.

2. Clear out any debris from the ram skirt area on top of the ram plate.
3. Wipe the lift tray out after each load to the dumpster.

5.2 Bi-Weekly Maintenance

1. Check the load door and main door hinges and latches. Ensure all screws and nuts are tight.
2. Inspect the shelf area at the top where electric and hydraulics are housed to ensure the area is dry and free of hydraulic fluid. If hydraulic fluid is observed, check hydraulic fittings for tightness and visually check hydraulic level of reservoir on pump.
3. Check the bottom interior chamber to ensure liquids are being wiped up after each use and are not being allowed to drain onto micro safety switch which controls the status light.
4. Open the load door with the main door open, and check the bottom of the load door for trash. Clean as necessary.
5. Wipe down all interior and exterior stainless steel surfaces with a soft damp cloth.

5.3 Monthly Maintenance

1. Remove the ram skirt, after emptying the compactor, by loosening the four red t-handles inside the skirt area on top of the ram plate.
2. Clean the ram skirt and plate using a disinfectant cleaner and soft cloth.
3. Re-attach the ram skirt to the ram plate using the four red t-handles.

4. Check the limit switches and ensure they are tight.
5. Check the hydraulic fluid level in the hydraulic tank. With the ram plate in the home (UP) position, the fluid level should be approximately 1 in. from the top of the reservoir. If the fluid level is low, it can be replenished by adding Dexron ATF transmission fluid, available at most auto parts stores.

▲ NOTICE: Make sure to filter the fluid to avoid getting foreign particles into the hydraulic components of the compactor, as this could affect the life expectancy as well as the warranty of your machine.

6. Check all bolts for tightness, with the cart empty, including top shaft bolts.
7. Spray lubricant, with the lift tray down, on the left and right lifting chains and upper sprockets.
8. Check the hoses and fittings on the ram cylinder for leaks and tighten with a wrench if necessary (do not over-tighten).
9. Check all electrical cables for tightness and tighten if necessary.
10. Check bolts and nuts for tightness and tighten if necessary.
11. Lubricate the main door handle and load door latch by opening the doors and applying spray lubricant (or petroleum jelly) to the moving parts as you work the handles up and down.

Care and maintenance, continued...

...Care and maintenance, continued






5.3 Semi-Annual Maintenance

1. Check the chain tension by checking the spring on the left and right side chain tensioners. If the spring is over 1 1/2 in. long, tighten the 5/16 nut above the spring until the spring is compressed to about 1 1/2 in.
2. Spray the lower sprockets, lift tray bearings, lift tray release handle, and lift tray bolt at pivot point.
3. Grease the lower shaft, using grease gun provided, while lift tray is at full height.
4. Grease the upper shaft bearings, using the grease gun provided, while the lift tray is in the lowered position.
5. Spray lubricant on drive chain while lift tray is at full height. Then lower lift tray about half way and spray lubricant on drive chain again.
6. Pump one or two squirts of grease in the zerk on each caster using the grease gun provided with the LiftPak LP1000.
7. Clean the cart completely including the bottom of the lift plate and behind the lift bracket.

▲ NOTICE: It is NOT recommended to spray wash the cart to clean it. If the cart is hosed down, the chains, roller bearings, tray pivot pins, and release lever must be lubricated with spray lubricant. Failure to apply lubricant may void your warranty.

8. Wipe down all surfaces with a soft damp cloth.
9. Check battery connections for corrosion and clean if necessary using a small brush. After cleaning, apply petroleum jelly.
10. Check electrical connections for cracks or bare wire.

6. TROUBLESHOOTING

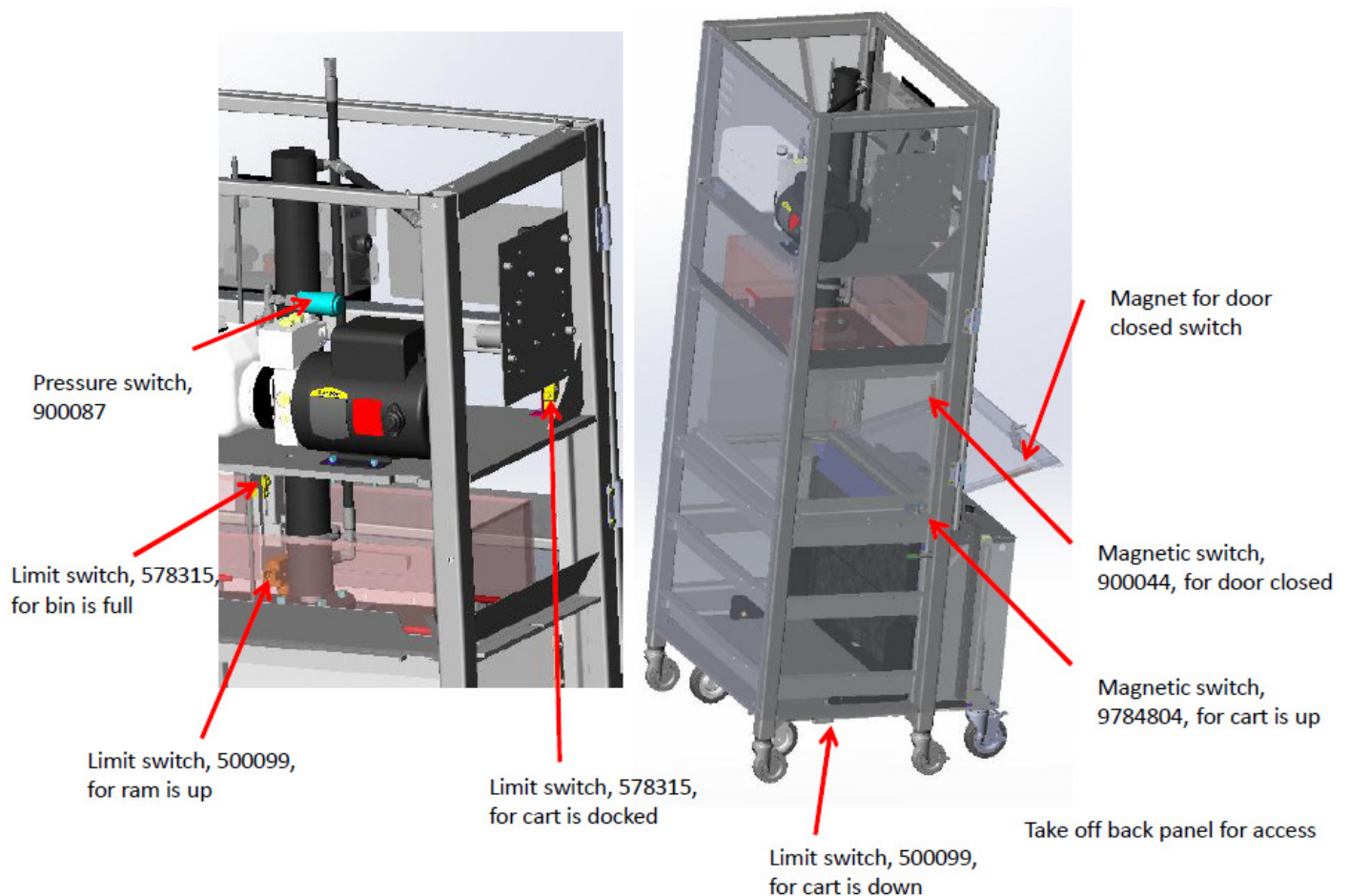
Problem	Cause	Solution
The red status light is constant. 	The SYNC cable on the lift cat is not plugged into the LP1000	Plug the SYNC cable on the cart into the LP1000
The "remove cart" button is pushed and the red status light is repeatedly flashing a one (1) flash pattern 	The "cart is docked" limit switch is not sensing the cart	Check electrical connections to the limit switch If electrical connection is okay, the limit switch may need to be replaced
The on switch is pushed and the red status light is repeatedly flashing a two (2) flash pattern 	The "door closed" magnetic switch is not sensing the magnet in the load door	Close the main door and lock it Close the load door and lock it Check the electrical connections to the magnetic switch If electrical connection is okay, the magnetic switch may need to be replaced
The on switch is pushed and the red status light is repeatedly flashing a three (3) flash pattern 	The "cart up" or the "cart down" limit switch is not being sensed	Press the "start" button. This should move the cart tray to the correct position The bin may be too full, empty the trash Check electrical connections to "cart up" sensor Check electrical connections to "cart down" sensor Check electrical connections to the motor Check chain and sprockets Check bearings
Machine either won't compact properly or doesn't shut off immediately at the end of compaction, red status light is repeatedly flashing a four (4) flash pattern 	Compaction plate is obstructed from getting to "Ram cylinder up" position	Clear any trash from the top of the compaction plate
	The "Ram cylinder up" limit switch is defective	Check electrical connections to the "Ram cylinder up" limit switch Replace the limit switch
	Pressure switch on the hydraulic cylinder is not working	Check electrical connections to the pressure switch at the top of the hydraulic cylinder
	Pressure switch is defective	Replace the pressure switch

Troubleshooting, continued...

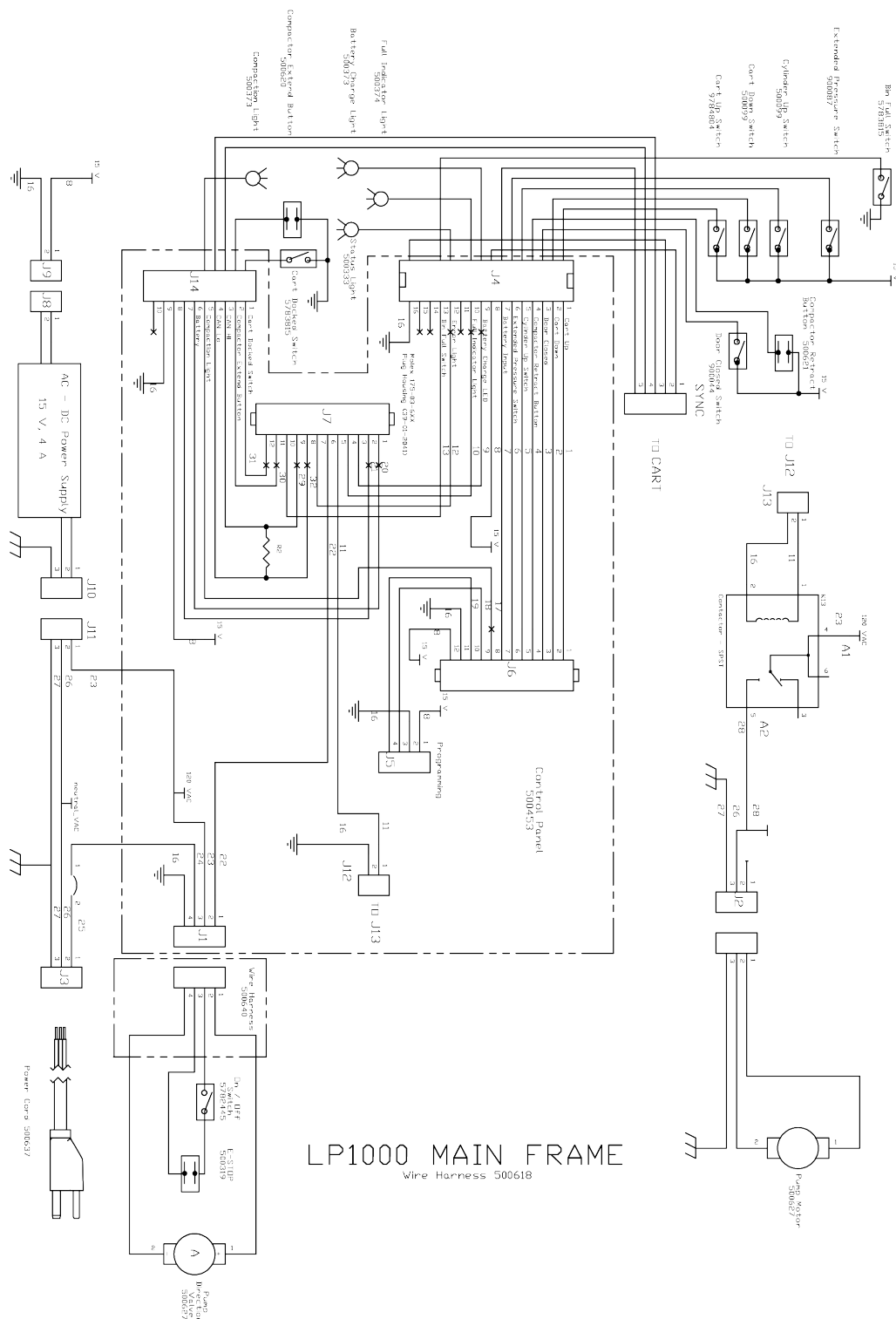
...Troubleshooting, continued

Problem	Cause	Solution
Machine won't compact properly, red status light is repeatedly flashing a five (5) flash pattern 	Solenoid valve on the power unit isn't working correctly	Check electrical connections to the solenoid valve
	Solenoid valve is defective	Replace solenoid coil and valve
Machine is unresponsive, red status light is repeatedly flashing a six (6) flash pattern 	Lift cart motor to raise and lower the lift is not running	Check electrical connections to the lift cart motor
	Lift cart motor is defective	Replace lift cart motor
Machine won't compact, red status light is repeatedly flashing a seven (7) flash pattern 	Pump contactor relay isn't working	Check electrical connections to the pump contactor relay
	Pump contactor relay is defective	Replace pump contactor relay
Machine is unresponsive, red status light is repeatedly flashing an eight (8) flash pattern 	Waste bin was full when power to compactor was turned on	Check waste bin and empty if needed
	The "Full Bin" limit switch is defective	Replace "Full Bin" limit switch. The switch can simply be disconnected in the short term to allow compactor to operate, but will not notify user when full until switch is replaced
Machine is unresponsive, red light is repeatedly flashing an nine (9) flash pattern 	The battery in the lift cart is dead	Check the electrical connections to the battery
	The battery in the lift cart is dead	Replace the battery

7. SWITCH LOCATIONS

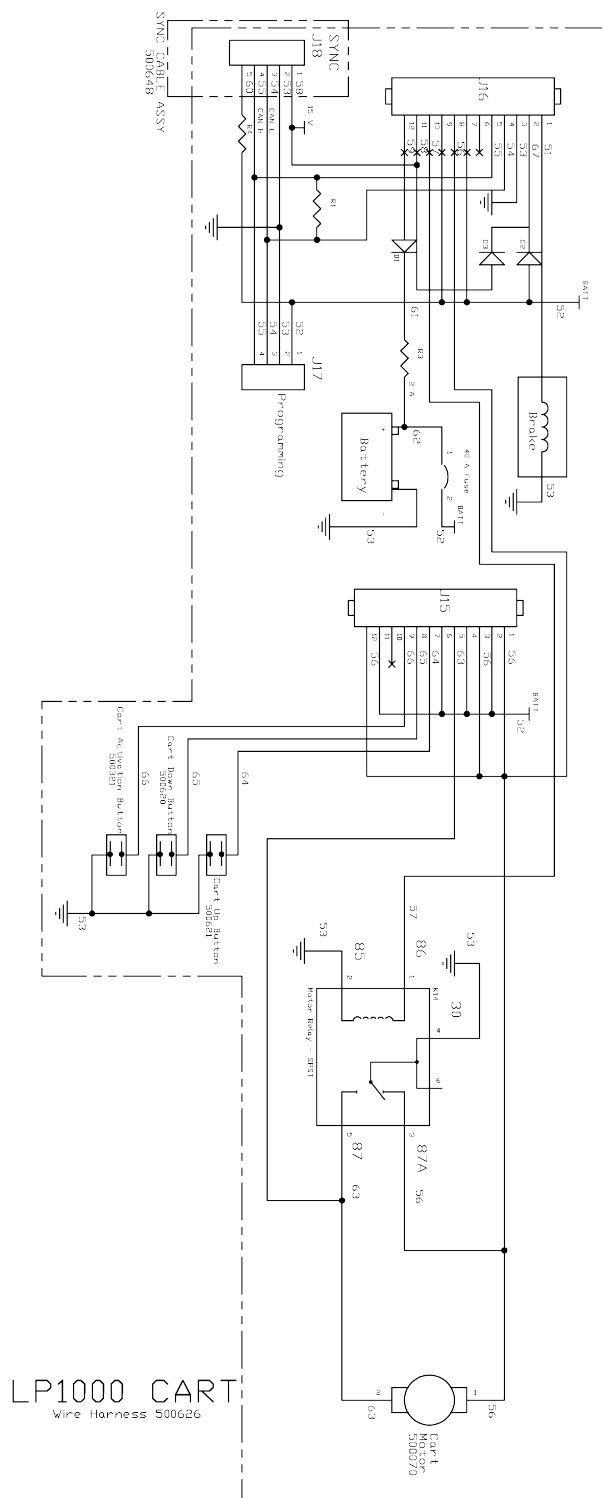


8. WIRING DIAGRAMS



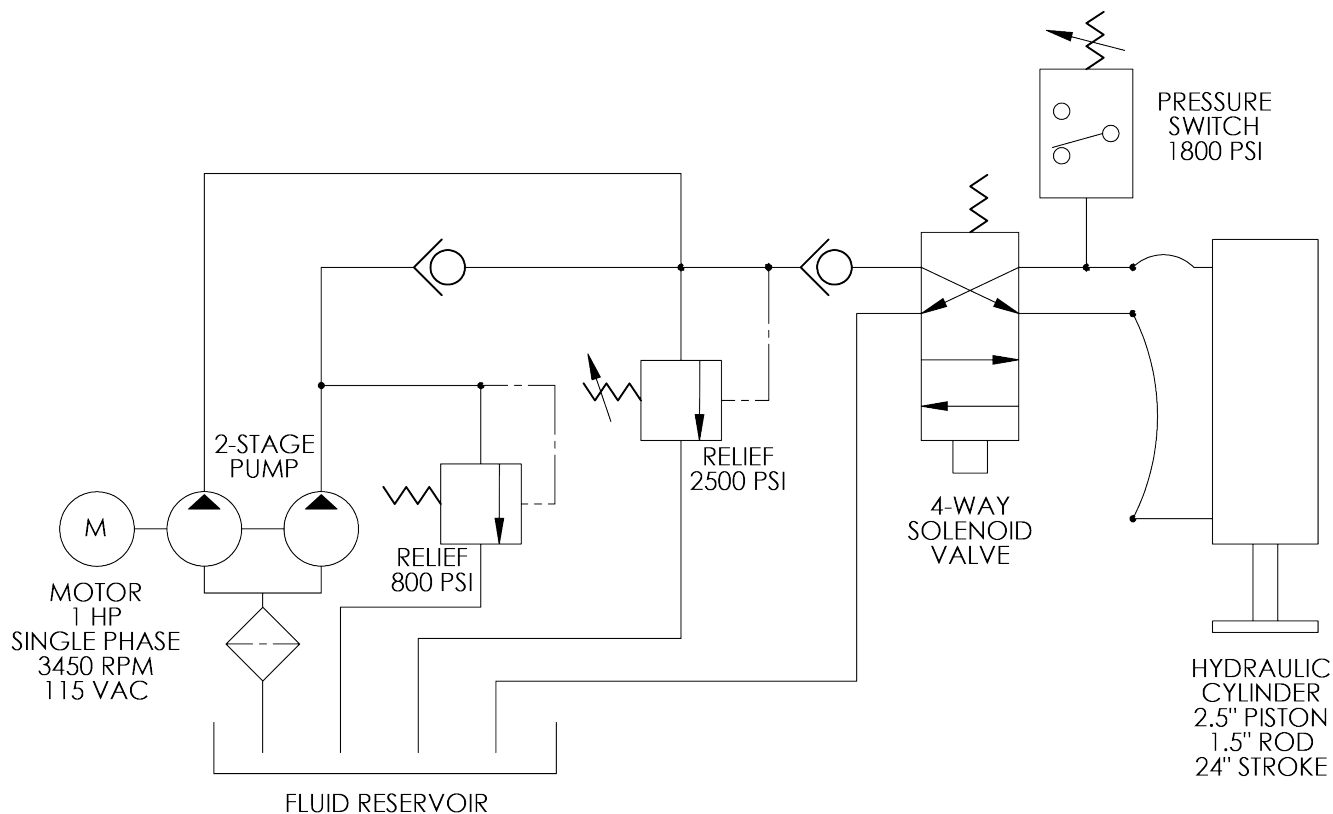
Wiring Diagrams, continued...

...Wiring Diagrams, continued



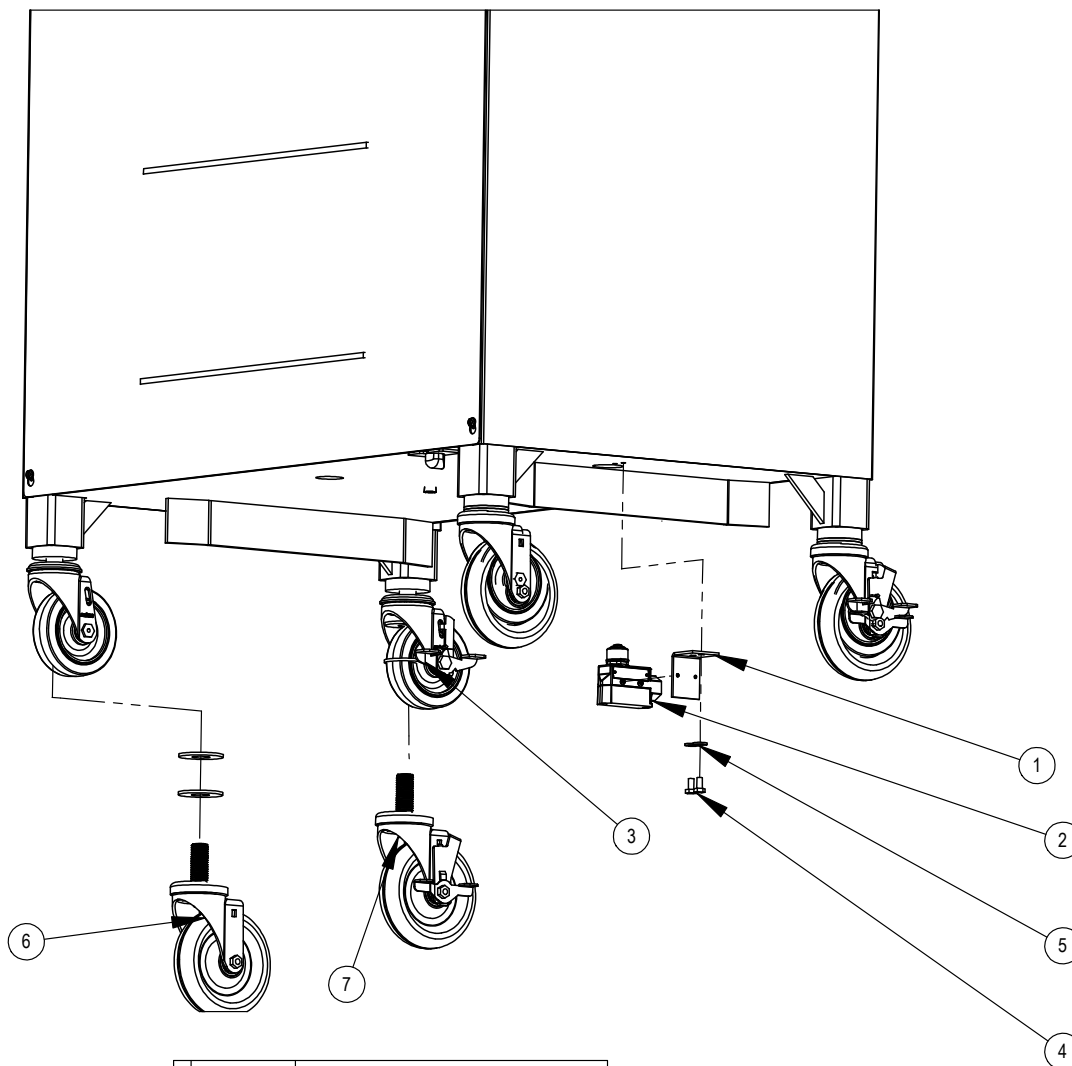
Wiring Diagrams, continued...

...Wiring Diagrams, continued



9. EXPLODED VIEWS

9.1 Bottom Surface Assembly



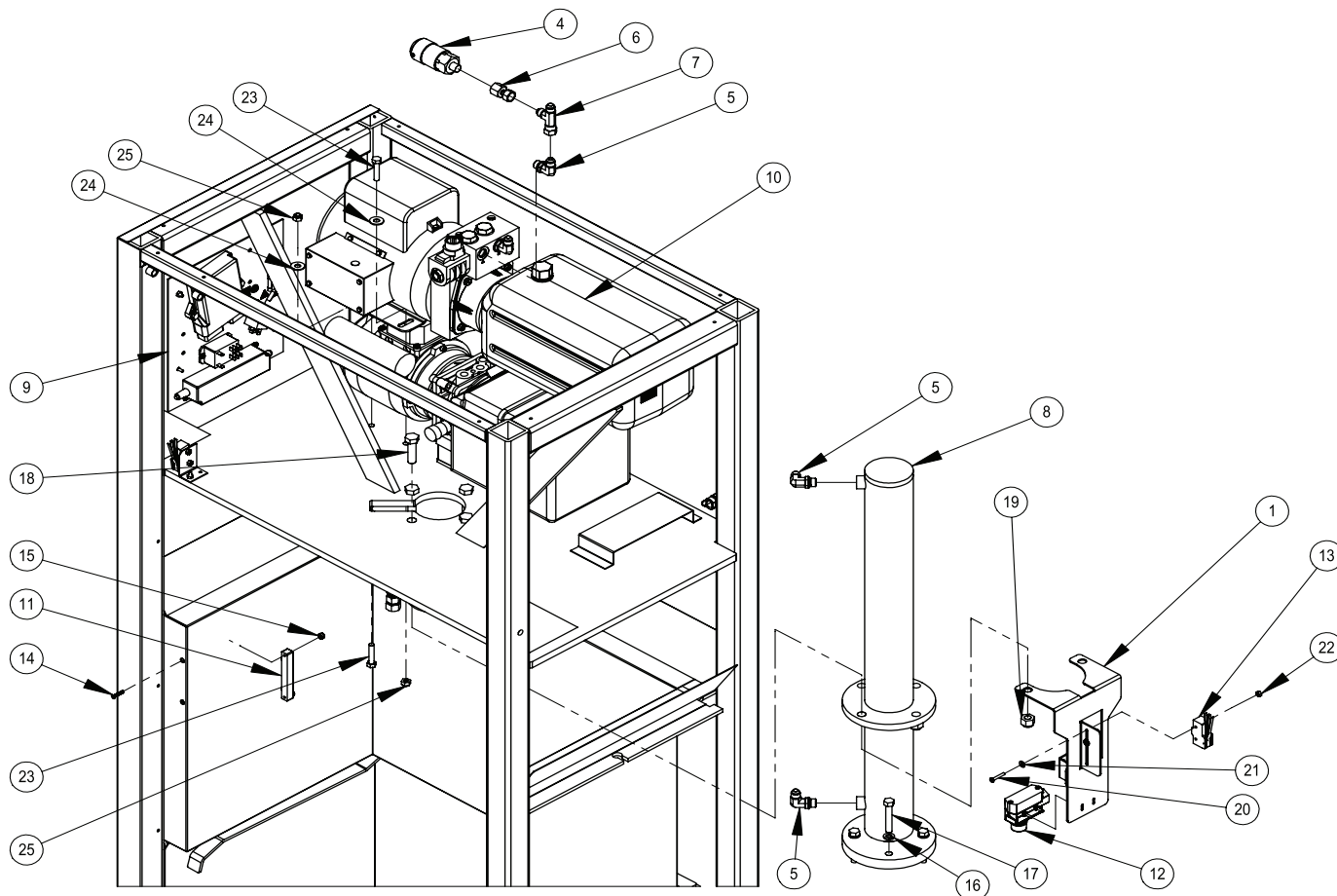
PART NO.	DESCRIPTION
1 900418	Bracket, Limit Switch
2 500099	Sealed Limit Switch
3 9786239	Washer, Flat, 3/4
4 9784698	Hex Screw, 1/4-20 x .50
5 9760514	Washer, 1/4 SAE
6 900083	Swivel Caste, 4" (No Brake)
7 900139	Swivel Caster, 4" (with Brake)

PART NUMBERS LISTED MAY ONLY BE AVAILABLE IN KIT FORM OR AS AN ASSEMBLY

Exploded Views, continued...

...Exploded Views, continued

9.2 Main Frame Assembly



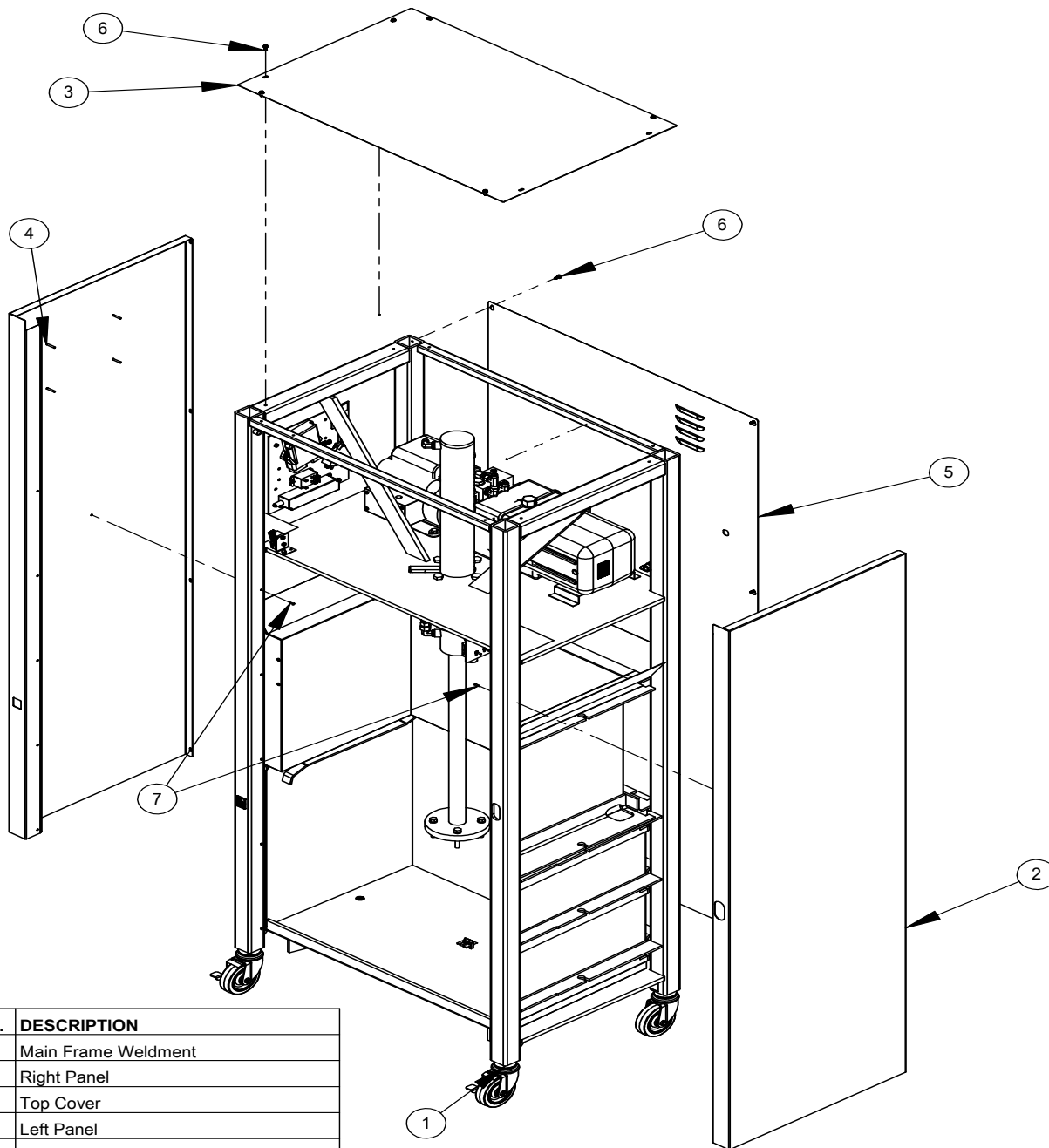
PART NO.	DESCRIPTION	PART NO.	DESCRIPTION	PART NO.	DESCRIPTION
1	900440 Bracket, Upper Limit Switch	11	900044 Magnetic Contact Switch	21	9641300 Washer, Flat, #8
2	900085 Hydraulic Hose, 18.00" (not shown)	12	500099 Sealed Limit Switch	22	9781840 Nut, Keps, #8-32
3	900086 Hydraulic Hose, 33.00" (not shown)	13	5783815 Limit Switch	23	9780775 Hex Screw, 5/16 x 1.50
4	900087 Pressure Switch	14	9786200 Screw, Flat Head, SS, #8-32 x 7/8	24	9100023 Washer, Flat, 5/16
5	900088 Elbow, 3/8 JIC	15	9786201 Nut, Nylock, SS, #8-32	25	9780182 Nut, Nylock, 5/16-18
6	900089 Coupling, 3/8 JIC to 1/4 NPT	16	9780402 Washer, 3/8, Split Lock		
7	900090 Tee, 3/8 JIC x 3/8 JIC	17	9786548 Hex Screw, 3/8-13 x 2 1/4		
8	900047 Hydraulic Cylinder	18	9782172 Hex Screw, 1/2-13 x 1.75		
9	500649 Control Panel Assembly	19	9783383 Nut, Nylock, 1/2-13		
10	500627 Hydraulic Power Unit, 1 HP	20	9781338 Screw, Pan Head, #8-32 x 1.00		

PART NUMBERS LISTED MAY ONLY BE AVAILABLE IN KIT FORM OR AS AN ASSEMBLY

Exploded Views, continued...

...Exploded Views, continued

9.3 Main Frame Assembly—Panels



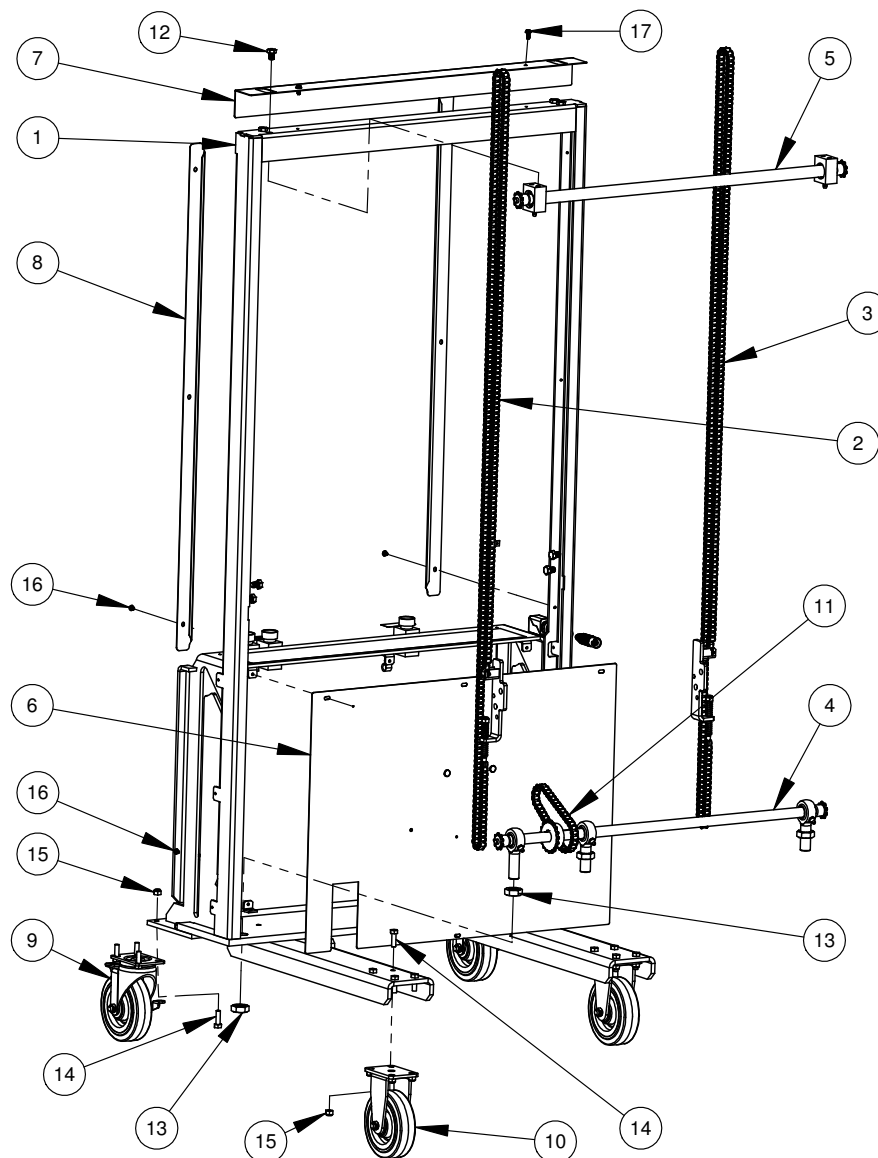
PART NO.	DESCRIPTION
1 900601	Main Frame Weldment
2 900031	Right Panel
3 900646	Top Cover
4 900607	Left Panel
5 900033	Back Panel
6 9783385	Screw, Hex, Self-Threading, #10-32
7 9786204	Blind Rivet, SS, .125 Dia

PART NUMBERS LISTED MAY ONLY BE AVAILABLE IN KIT FORM OR AS AN ASSEMBLY

Exploded Views, continued...

...Exploded Views, continued

9.4 Lift Cart Assembly—Casters and Chain



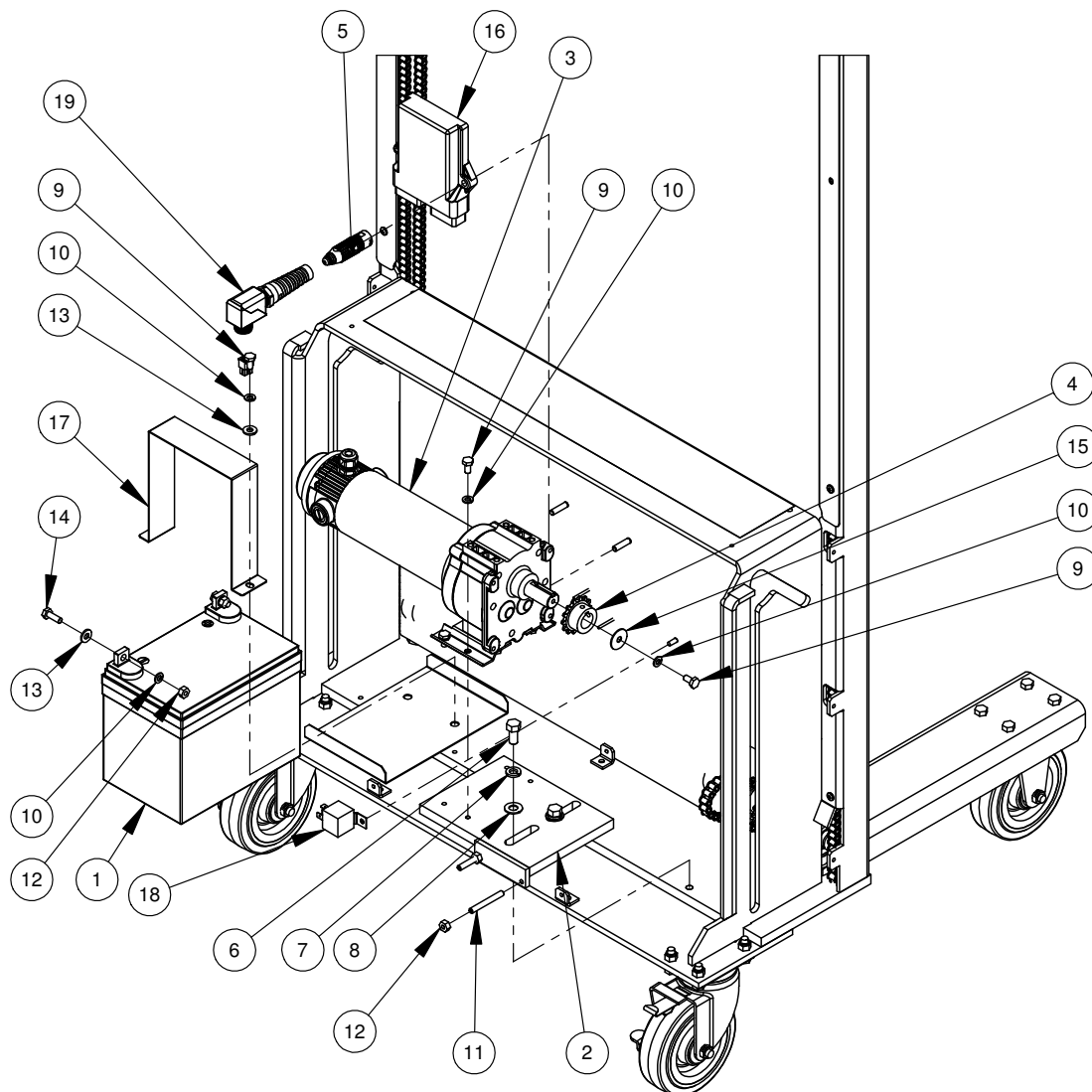
PART NO.	DESCRIPTION	PART NO.	DESCRIPTION
1	900602 LIFT CART WELDMENT	10	900082 Caster, Rigid, 5 Inch
2	900011 Chain Assembly, Right	11	900117 Drive Chain
3	900012 Chain Assembly, Left	12	9786213 Hex Screw, 3/8-16 x .50
4	900016 Shaft Weldment, Bottom	13	9786212 Nut, Hex, Jam 3/4-16
5	900017 SHAFT WELDMENT - TOP	14	9561700 Hex Screw, 5/16-18 x 1.00
6	900038 Motor Cover	15	9780182 Nut, Nylock, 5/16-18
7	900040 Top Cap	16	9786215 Screw, SS, Pan Head, #10-32 x .25
8	900615 Chain Guard	17	9783385 Screw, Hex, Self-Threading, #10-32
9	900081 Caster, Swivel, 5 Inch, Brake		

PART NUMBERS LISTED MAY ONLY BE AVAILABLE IN KIT FORM OR AS AN ASSEMBLY

Exploded Views, continued...

...Exploded Views, continued

9.5 Lift Cart Assembly—Motor and Battery



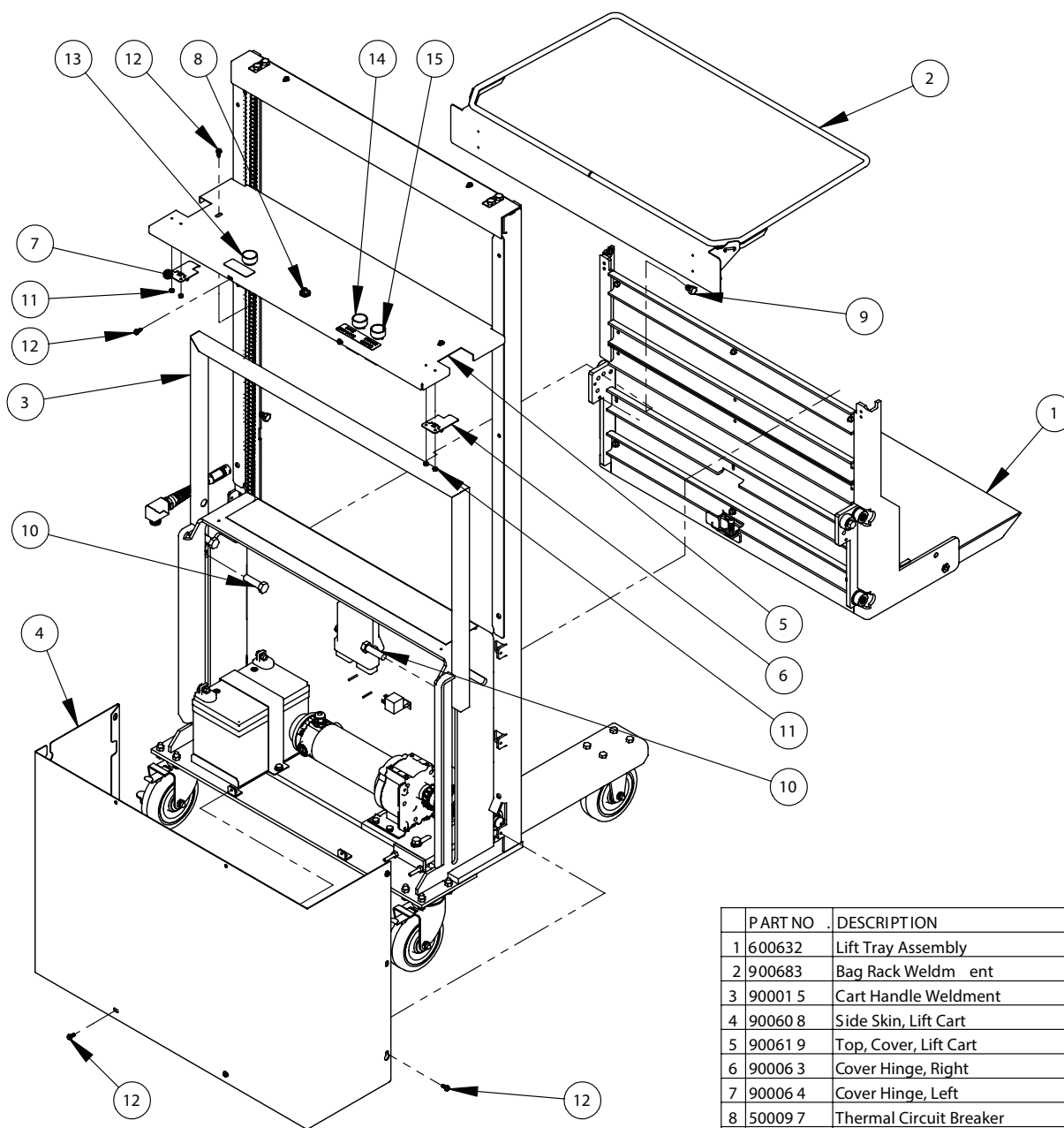
PART NO.	DESCRIPTION	PART NO.	DESCRIPTION
1 500094	DC Battery, Lift Cart	12 9654100	1/4 - 20 Nut
2 900062	Mounting Plate, Gear Motor	13 9760514	Washer, 1/4 SAE
3 500070	DC Motor, 1/5 HP	14 9159200	Hex Screw, 1/4-20 x .75
4 900072	Sprocket, 35BS14, .75 Bore	15 9781414	Washer, Fender, 1/4
5 9780343	1/4-20 Nylock Nut	16 500622	Controller Module, LP100
6 9780144	Hex Screw, 3/8-16 x .75	500626	Wire Harness (not shown)
7 9780402	Washer, 3/8, Split Lock	17 900609	Battery, Strap
8 9100731	Washer, Flat, 3/8	18 500566	12V DC Relay
9 9784698	Hex Screw, 1/4-20 x .50	19 500648	SYNC Cable Assembly
10 9780164	Washer, Split Lock, 1/4		
11 9786518	Set Screw, Cup Pt, 1/4-20 x 2.00		

PART NUMBERS LISTED MAY ONLY BE AVAILABLE IN KIT FORM OR AS AN ASSEMBLY

Exploded Views, continued...

...Exploded Views, continued

9.6 Lift Cart Assembly—Skins and Handle



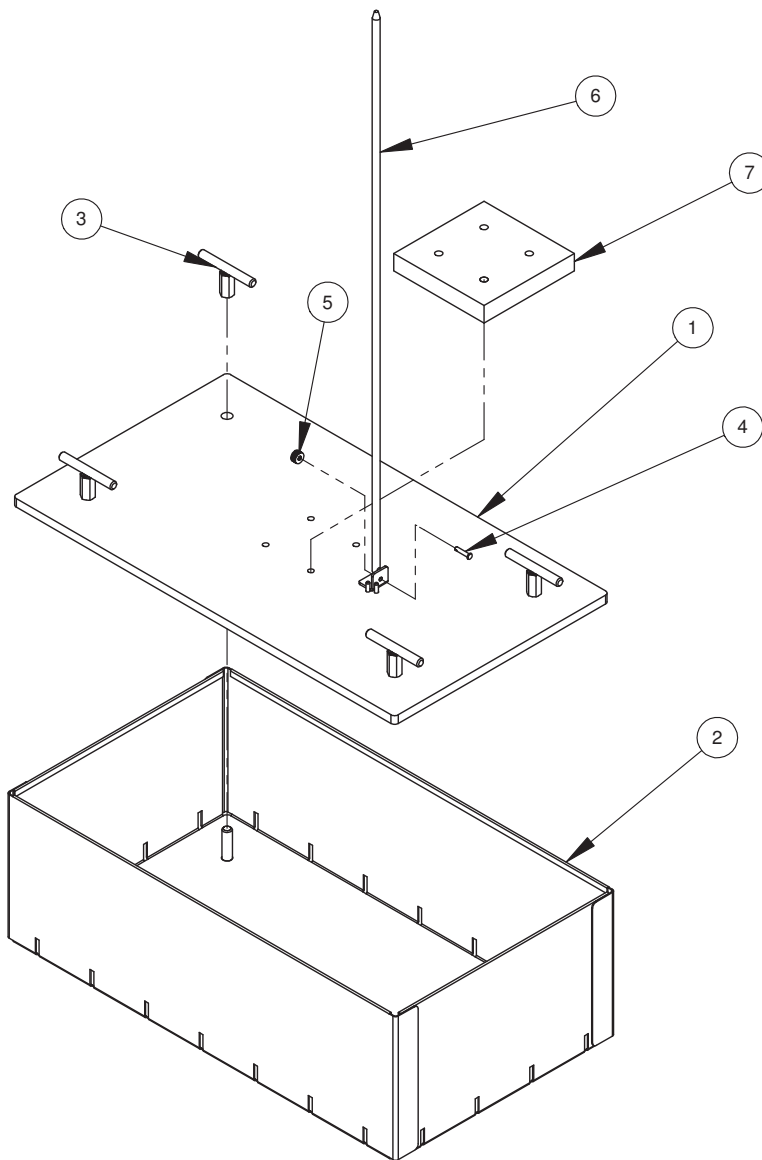
PART NO	DESCRIPTION
1 600632	Lift Tray Assembly
2 900683	Bag Rack Weldment
3 900015	Cart Handle Weldment
4 900608	Side Skin, Lift Cart
5 900619	Top, Cover, Lift Cart
6 900063	Cover Hinge, Right
7 900064	Cover Hinge, Left
8 500097	Thermal Circuit Breaker
9 9786213	Hex Screw, 3/8-16 x .50
10 9782172	Hex Screw, 1/2-13 x 1.75
11 9785171	Nut, Nylock, #6-32
12 9783385	Screw, Hex, Self-Threading, #10-32
13 500321	Black Pushbutton
14 500620	Green Down Push Button
15 500621	Blue Up Push Button

PART NUMBERS LISTED MAY ONLY BE AVAILABLE IN KIT FORM OR AS AN ASSEMBLY

Exploded Views, continued...

...Exploded Views, continued

9.7 Ram Plate Assembly



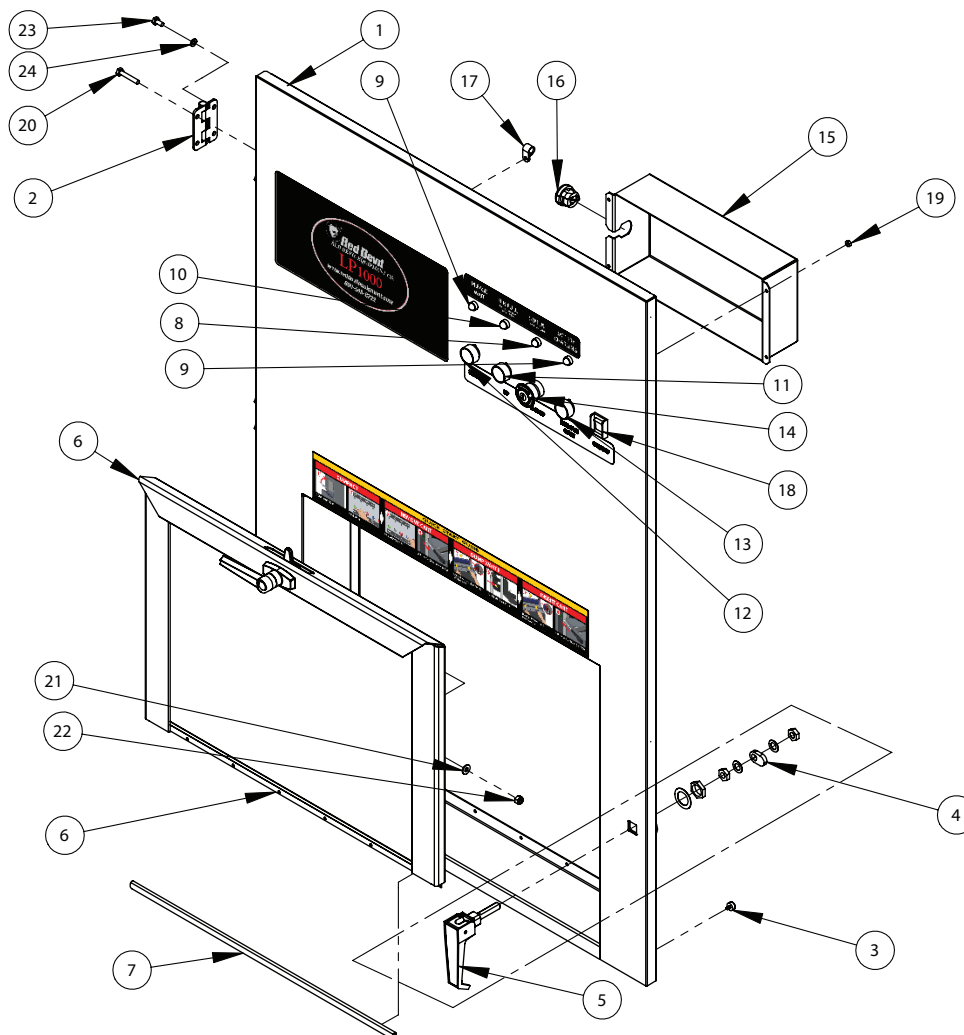
	PART NO.	DESCRIPTION
1	900045	Ram Plate
2	900046	Ram Skirt
3	900049	Ram Plate Handle
4	900128	Clevis Pin, 3/16 Dia x 1.00
5	9780749	Washer, Flat, #10
6	900659	Full Tube Rod
7	900657	Ram Extension Block

PART NUMBERS LISTED MAY ONLY BE AVAILABLE IN KIT FORM OR AS AN ASSEMBLY

Exploded Views, continued...

...Exploded Views, continued

9.8 Main Door Assembly



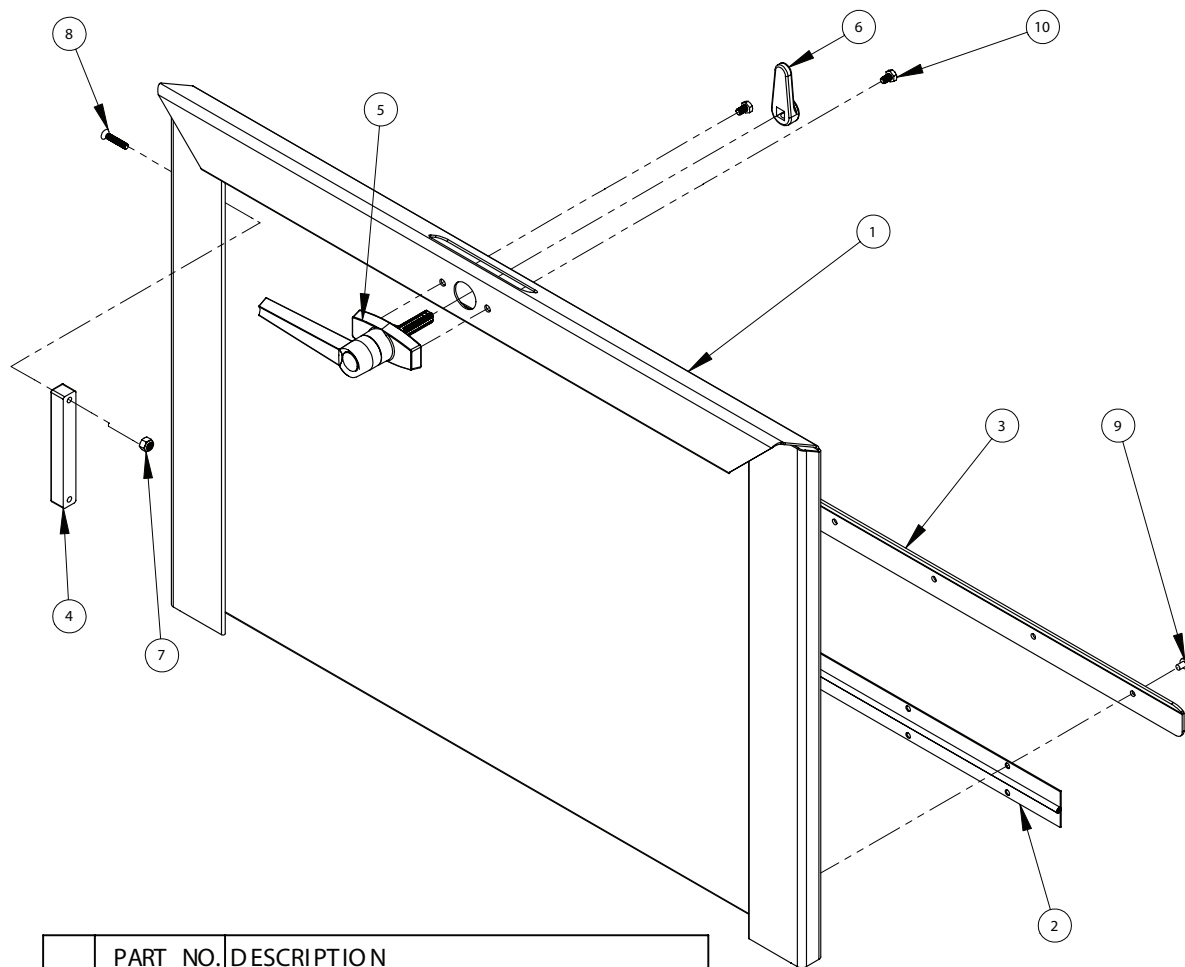
PART NO.	DESCRIPTION	PART NO.	DESCRIPTION	PART NO.	DESCRIPTION
1 900605	Main Door Weldment	9 500373	Green LED	17 963620 0	Cable Clamp, 7/16
2 900021	Hinge	10 50037 4	Amber LED	18 578244 5	Power Switch
3 900023	Bumper	11 50032 1	Black Pushbutton	19 978184 0	Nut, Keps, #8-32
4 900024	Latch Cam	12 50062 0	Green Down Push Button	20 978035 3	Hex Screw, 1/4 x 1 1/2
5 900020	Latch Handle	13 50062 1	Blue Up Push Button	21 976051 4	Washer, 1/4 SAE
6 600631	Load door	14 50031 9	E-Stop Keyed Switch	22 978034 3	Nut, Nylock, 1/4-20
7 900617	Hinge Cover	15 90061 1	Controls Cover	23 978469 8	Hex Screw, 1/4-20 x .5 0
8 500333	Red LED	16 9782603	Strain Relief	24 9780164	Washer, Split Lock, 1/4

PART NUMBERS LISTED MAY ONLY BE AVAILABLE IN KIT FORM OR AS AN ASSEMBLY

Exploded Views, continued...

...Exploded Views, continued

9.9 Load Door Assembly



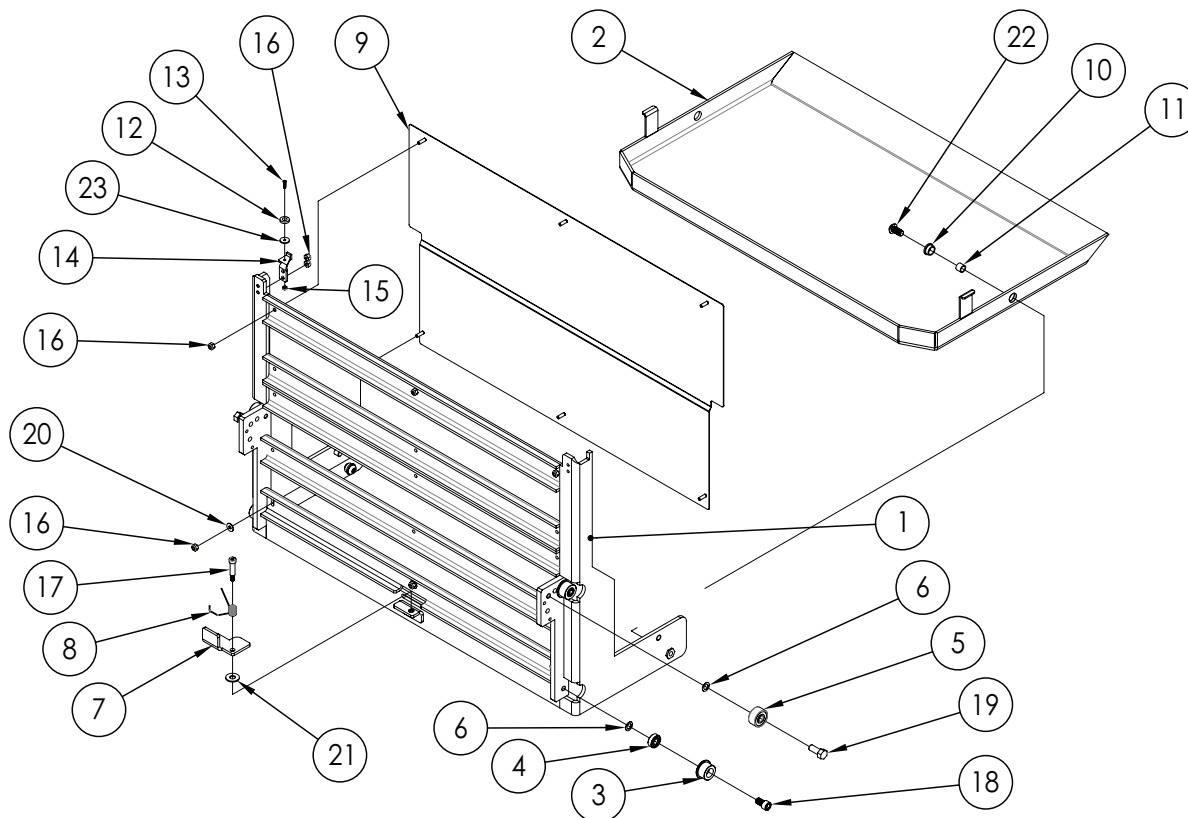
	PART NO.	DESCRIPTION
1	900604	Load Door
2	900614	Hinge
3	900616	Splash Guard
4	900043	Switch Magnet
5	900183	Latch Handle
6	900204	Latch Cam
7	9786201	Nut, Nylock, SS, #8-32
8	9786200	Screw, Flat Head, SS, #8-32 x 7/8
9	9786523	Screw, Pan Head, SS, #8-32 x .25
10	9786519	Hex Screw, SS, #10-32 x .313

PART NUMBERS LISTED MAY ONLY BE AVAILABLE IN KIT FORM OR AS AN ASSEMBLY

Exploded Views, continued...

...Exploded Views, continued

9.10 Lift Tray Assembly



PART NO.	DESCRIPTION	PART NO.	DESCRIPTION
1 900603	Lift Plate Support Weldment	13 9786521	Screw, Flat Head, SS, #5-40 x .50
2 900009	Lift Tray Weldment	14 900704	Magnet Mount
3 900050	Roller	15 9786522	Nut, Nylock, #5-40
4 900051	Radial Ball Bearing	16 9781383	Nut, Nylock, #10-32
5 900052	Double Row Radial Ball Bearing	17 9786207	Shoulder Bolt, .313 Dia x 1.00 LG
6 900053	Roller Spacer	18 9786206	Screw, SHCS 3/8-16 x .63
7 900054	Release Handle	19 9782751	Hex Screw, 3/8 x .88
8 900055	Release Spring	20 9780749	Washer, Flat, #10
9 900056	Lift Bracket Panel	21 9100023	Washer, Flat, 5/16
10 9784425	Bronze Flange Bearing	22 9786208	Screw, Button Head, 3/8-16 x .75
11 900127	Steel Sleeve	23 900700	Rubber Washer, #5
12 9784803	Switch Magnet		

PART NUMBERS LISTED MAY ONLY BE AVAILABLE IN KIT FORM OR AS AN ASSEMBLY

10. ORDERING

Replacement Parts

HOW TO ORDER REPLACEMENT PARTS

Replacement parts can be ordered from Red Devil Equipment Co. by telephone, fax, or email:

RED DEVIL EQUIPMENT CO.

763-852-1820
800-543-8722
763-852-1811 (FAX)
orders@reddevilequipment.com

If you need help in determining the proper part(s) to order, please call customer service. at 1-800-221-1083. Always indicate the Model and Serial numbers of the machine when ordering replacement parts.

GENERAL PARTS REPLACEMENT POLICIES

While your machine is under warranty, do not attempt on-site repair or parts replacement without first contacting Red Devil Equipment Co. (to protect your warranty). After the warranty expires, replacement parts and recommendations for on-site servicing are available from Red Devil Equipment Co. Please Customer Service for assistance.

RESTOCKING FEE

A restocking fee will be charged on all unused parts which are returned.

11. WARRANTY

Equipment Covered Under This Warranty:

LiftPak® LP1000, C500, M200, R200

Warranty

Red Devil Equipment Co. warrants equipment manufactured by it and bearing its name to be free from defects in material and workmanship.

Red Devil Equipment Co. will provide replacement parts caused by failure due to production or manufacturing error for a period of one year. Costs of labor and transportation for service of machines under this warranty will also be covered during the warranty period. Normal ground freight will be covered for replacement parts sent within the warranty period. UPS Ground or common carrier ground freight will be covered for the return of defective items only.

This warranty applies only when the equipment is installed, operated, and maintained in accordance with written Red Devil Equipment Co. instructions as appearing in the owners' manuals.

This warranty does not cover, and Red Devil Equipment Co. shall not be liable for, any malfunction, damage, or wear caused by faulty installation, misapplication, abrasion, corrosion, inadequate or improper maintenance, negligence, accident, tampering, or substitution of non-red Devil Equipment Co. component parts, modification or use of non-intended purpose. Nor shall Red Devil Equipment Co. be liable for malfunction, damage, or wear caused by the incompatibility with Red Devil equipment Co. equipment of structures, accessories, equipment, or materials not supplied by Red Devil Equipment Co.

Disclaimers and Limitations

The terms of this warranty constitute purchaser's sole and exclusive remedy and are in lieu of any other warranties, express or implied. In no case shall Red Devil Equipment Co.'s liability exceed the amount of the purchase price. *All warranty repairs must be executed by a Red Devil Equipment Co. Authorized Service Center or warranty will be voided.

Please contact your Red Devil Equipment Co. account representative at 800-543-8722 for specific questions regarding warranty terms.



Owner's Manual: LiftPak LP1000 Commercial Waste Compactor

100136 Rev E
ECO 12-0150
May 2014

For sales or service, please contact:

Red Devil Equipment Co.
Attn: Customer Service Department
14900 21st Ave N
Plymouth, MN 55447
USA

U.S. Telephone: 800.543.8722
International Telephone: +1.763.852.1820
Fax: 763.852.1811
E-mail: info@reddevilequipment.com

www.RedDevilEquipment.com



For instructional "How To" videos please visit:
www.RedDevilEquipment.com

