

iBT-GPS Bluetooth GPS Data Logger

User's Manual



Published on 15-Jan-2007

Rev 1.1

8029407701A

Table of Contents

Chapter 1 Before you begin	4
1.1 Note and Warning	4
1.2 Introduction	5
1.3 Features	5
1.4 Applications	6
1.5 Appearance	7
1.6 Power Switch and Push Button	8
1.7 LED Display	9
Chapter 2 Getting Started	10
2.1 Checking the package content	10
2.2 Getting Started	11
Step 1 Charging Your Battery	11
Step 2 Turning on the power switch (NAV/ LOG)	12
Step 3 Connecting your handheld device with iBT-GPS	12
Step 4 Loading your GPS mapping or routing software	16
Step 5 Starting the application	16
2.3 Helpful Tips	17
Chapter 3 Using Logger	18
3.1 How to connect the iBT-GPS to your PC	18
3.1.1 Driver installation	18
3.1.2 Google Earth	20
3.2 Software Utility --- iBT-GPS Logger Tool	21
3.2.1 Configuration	22
3.2.2 Satellite Information	31

3.2.3 Data Log List --- way to download the data from logger!	33
3.2.4 About	38
Appendix	39
Appendix A. Specifications	39
Appendix B. Certification	42
Appendix C. Warranty Information	44

Chapter 1 Before you begin

1.1 Note and Warning

- iBT-GPS uses Lithium battery. If iBT-GPS is used in temperature lower than -10°C or higher than 60°C , its battery charging capability will decrease. Please leave the iBT-GPS far from heat or high temperature environment. In addition, do not expose your iBT-GPS in temperature higher than $140^{\circ}\text{F}/60^{\circ}\text{C}$. If you do not follow these rules, the battery inside iBT-GPS may overheat, explode or burn itself, and this will lead to very serious damage. The Lithium battery inside the iBT-GPS should be recycled.
- While in the hospital, turning off the iBT-GPS is recommended. Wireless GPS receiver may interfere with medical equipments which use radio frequency.
- For a long period not using iBT-GPS, take out the battery and store it in dry/cool places.
- For safety, keep the iBT-GPS and all accessories out of children's reach.
- The manufacturer assumes no responsibility for any damages and loss resulting from the use of this manual, or from deletion of data as a result of malfunction, dead battery, or from misuse of the product in any way.
- Use only the supplied and approved accessories. Unauthorized accessories, modifications or attachments could damage the iBT-GPS, and may violate regulations governing radio devices.

- Use a dry, clean soft cloth to clean the unit. Do not use harsh cleaning solvents, chemicals, or strong detergents.
- Do not attempt to open the iBT-GPS yourself. Unauthorized hacking may damage the unit, and void your warranty.

1.2 Introduction

This iBT-GPS logger features an all-in-one, cost-effective portable GPS logging solution. With its on-board memory, it allows you to log your routes by ways of time/ distance/ speed. Points of interest can also be recorded by a push button. Through user friendly software utility, it shows your track on Google Earth. This data logger is small and robust, ideal to carry everywhere for applications such as route tracking, mountain climbing or fleet management.

1.3 Features

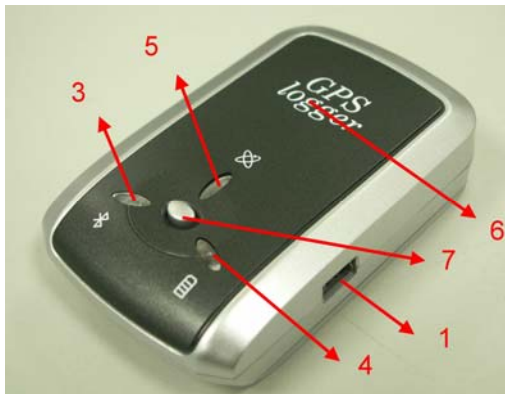
1. MTK GPS chipset 32 channels.
2. 20+ hrs operation time.
3. Embedded with 16Mb memory for saving up to 100,000 way points.
4. Dual modes for both route recording and navigation.
5. Push to log for points of interest.
6. 3 recording methods: by time, by distance or by speed.
7. Tracks can be shown on Google Earth.
8. WAAS and EGNOS supported for better accuracy.
9. Support NMEA-0183 GGA, GSA, GSV, RMC, VTG, GLL.

10. Fully compliant with Bluetooth V1.2
11. Support NMEA compliant mapping softwares like TomTom, Route66...etc.

1.4 Applications

- Route recording
- Business trip expense management
- Fleet management
- Driving behavior monitoring
- Saving of Point of Interest

1.5 Appearance



1. DC jack (mini USB type)
2. Mode switch (Power off/ Navigation&log/ Pure log)
3. Bluetooth status LED (blue)
4. Battery status LED (red/green)
5. GPS status LED (orange) / Push to log LED (blue)
6. Internal GPS antenna
7. Push Button

1.6 Power Switch and Push Button



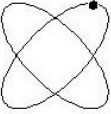
Power Switch	
Right (Off)	Power off
Middle (NAV)	Enable Navigation + log mode
Left (LOG)	Enable pure log mode
Push button	
Push	Push to log points of interest, LED blinks 3 times.

Difference between NAV and LOG:

NAV	You can use the iBT-GPS as a Bluetooth GPS receiver to navigate when you have a Bluetooth enabled PDA/ Smartphone in your car. The logging is on as well. Note: When the Bluetooth connection is cut off, iBT-GPS will stop its logging.
LOG	In this mode iBT-GPS works as a pure logger, no navigation function is supported.

1.7 LED Display

The Bluetooth GPS data logger has three LED lights, one is Bluetooth Status LED, the 2nd one is Battery Status LED, the 3rd one is GPS Status LED/ Push to log LED. The status table of LED shows as follows:

Category	SYMBOL	COLOR	STATUS	Function
Bluetooth Status LED		Blue	Always on:	Bluetooth on, but not connected to any Bluetooth devices yet
			Slowly blinking:	Sleeping mode (1 time / 5 seconds)
			Quickly blinking:	Bluetooth is connected and ready for data transmission (1 time / 2 seconds)
Battery Status LED		Red	Blinking:	The battery is too low
		Green	Light On:	The battery is charging
		Green	Blinking:	The battery is fully charged
GPS Status LED		Orange	Always on:	Acquiring satellites, GPS position not fixed
			Quickly Blinking:	GPS position is fixed, Navigation
		Blue	Quickly Blinking:	LED blinks 3 times, Points of Interest is recorded
			Slowly Blinking:	The memory space is too low (20% left now)
			Solid	The memory is full and stop

Chapter 2 Getting Started

2.1 Checking the package content

Congratulations on your purchase of the iBT-GPS with built-in Lithium rechargeable battery. Before you start using iBT-GPS, please make sure if your package includes the following items. If any item is damaged or missing, please contact your dealer at once.

- Bluetooth GPS Date Logger - iBT-GPS x 1
- USB to mini-USB cable x 1
- Traveler Power Adapter x 1
- DC cigarette lighter adapter x 1
- Lithium rechargeable battery x 1
- CD Tool x 1 (user manual, software utility)
- Quick start guide x 1

*Unit package contents may vary depending on countries without prior notice.

2.2 Getting Started

Please follow the procedure step by step.

Step 1 Charging Your Battery

To charge your iBT-GPS data logger, you have to plug your USB cable into the power source. Charging time is about 3~4 hours and you can charge from PC/ Notebook's USB HOST or from cigarette-lighter in car.

For the 1st time you use the iBT-GPS, please charge battery until it is full (the green LED blinks). The LED that represents the battery is the right-most battery icon (shown in below).



- If the LED is red, that means battery power is critically low. Charge immediately.
- If the LED is green, that means battery is charging now.
- If the green LED is blinking, that means battery is fully charged.

Step 2 Turning on the power switch (NAV/ LOG)



Power off



Navigation



Data record

Difference between NAV and LOG:

NAV	You can use the iBT-GPS as a Bluetooth GPS receiver to navigate when you have a Bluetooth enabled PDA/ Smartphone in your car. The logging is on as well. Note: When the Bluetooth connection is cut off, iBT-GPS will stop its logging.
LOG	In this mode iBT-GPS works as a pure logger, no navigation function is supported.

****For further function to download your routes to PC, please refer to Chapter 3.**

Step 3 Connecting your handheld device with iBT-GPS

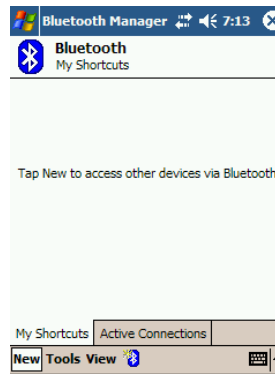
Note: iBT-GPS is allowed to connect to a Bluetooth device (PDA/ Smartphone/ laptop) only in Navigation mode.

Please refer to the user manual of PDA to enable the Bluetooth connectivity. If the connection between your device and iBT-GPS is successful, the blue LED of iBT-GPS will be blinking.

Below, we provide a common procedure of software installation to set up your PDA. (For other PDA, the steps may be different. Bluetooth Manager is a popular program used on Bluetooth device.)



-->



Start -> Bluetooth Manager

New

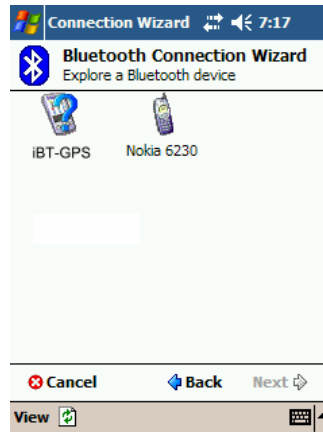
1. Open “Bluetooth Manager” on your pocket pc, and establish a new connection.



Explore A Bluetooth device

->Next

-->



Tap iBT-GPS

2. Explore a Bluetooth device, and find the “iBT-GPS”

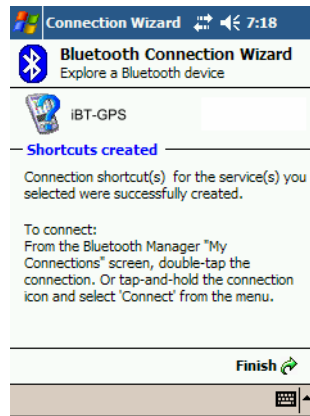


Passkey 0000 (if your PDA asks for the passkey)

3. (Optional)



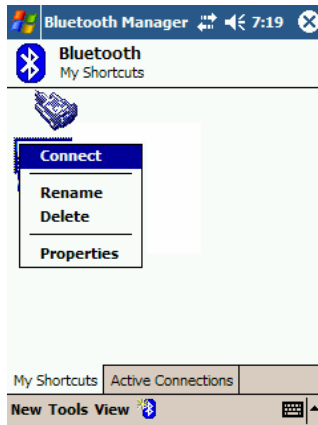
-->



Select SPP slave->Next

Finish

4. Connect to Serial Port Profile (SPP) Slave



-->



Tap and Hold iBT-GPS: SPP slave, Connect

Done

5. Finish Bluetooth Manager Setup

Step 4 Loading your GPS mapping or routing software

You should have mapping software on your PDA/ Smartphone/ laptop or you need to install it before using the iBT-GPS for navigation.

Step 5 Starting the application

Select the correct COM port & baud rate within the application

Note: The Bluetooth device in most of the applications has an “auto-detect” feature so that you do not need to select the Baud Rate.

2.3 Helpful Tips

- It's better to turn off the iBT-GPS when you don't use it, or the serial Flash's life can't last long.
- Some vehicles having heavy metallic sun protecting coating on windshields may affect GPS signal receptions
- Driving in and around high buildings may affect GPS signal receptions.
- Driving in tunnels or indoor park may affect signal receptions.
- In general, any GPS receiver performs best in open space where it can see clean sky. Also weather will affect GPS reception – rain & snow contribute to worse sensitivity.
- Low battery of a PDA or of an iBT-GPS may affect signal receptions.
- Please check the correct “COM” and “Baudrate” of your PDA.
- iBT-GPS output data updates every second, therefore the actual position and the position shown in your map may have slight time delay. This may happen when you drive at higher speed or make a turn around a corner.
- Note that iBT-GPS may not work indoors where it can not see the sky.
- For the 1st time you use the iBT-GPS, it will take 1 to 3 minutes to obtain the satellite constellation information and fix your position, this is called “Cold Start”. If you replace the battery, iBT-GPS will do Cold Start again.
- If your iBT-GPS can't fix your position for more than 20 minutes, we suggest you change to another spot with open space and then try again.

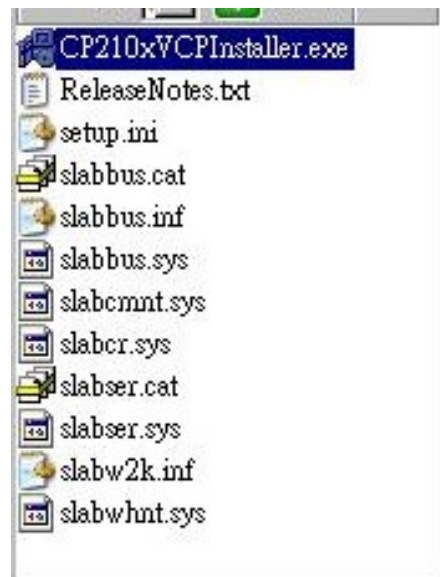
Chapter 3 Using Logger

3.1 How to connect the iBT-GPS to your PC

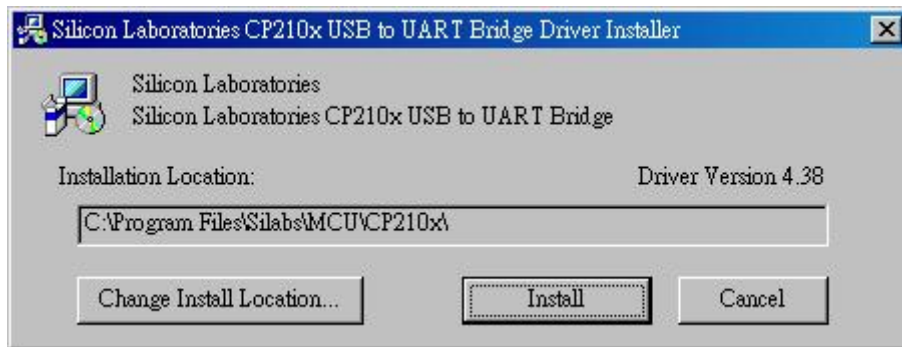
3.1.1 Driver installation

Note: These drivers are only designed for Microsoft Windows based PC only (Windows XP/ 2000)! Therefore, Mac OS and Linux are not supported.

1. Driver is located in “CP210x folder” . Please double click the “CP210xVCPInstaller.exe” .



2. Click “Install” . Now installing...



3. Complete installation, but you must restart your computer before the new settings will take effect.



User can go to the MS Windows’ device manager to see the status showing this USB device installation is completed.

Please go to check the corresponding virtual COM Port. Afterward users only have to use same COM Port in same USB port, and can directly make a connection successfully between the PC end and iBT-GPS data logger. For example, COM7.

3.1.2 Google Earth

If your computer is not yet installed with Google Earth. Google Earth has free download version, go download it in the internet first. For more information, please visit <http://earth.google.com/>.

3.2 Software Utility --- iBT-GPS Logger Tool

(To use a mini-USB cable to connect the iBT-GPS to your PC, you have to power on the iBT-GPS unit. Therefore, you have to switch to LOG)

Note: Please install USB Driver before you use iBT-GPS Logger Tool. For driver installation, please refer to “3.1 Drivers”.

Step 1.

You have to create and name a folder in your computer to further put the iBT-GPS logger tool. Please copy the “DataLog.exe” into this folder.

Step 2.

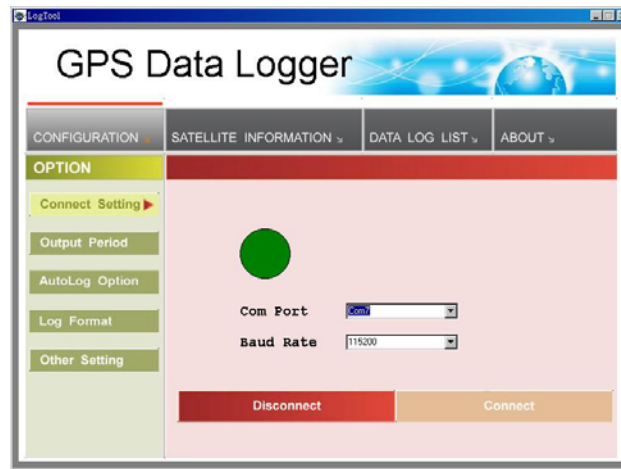
Click on the icon of the logger tool “DataLog.exe”

Step 3.

See below, four sections will display horizontally on the screen in an array from left to right as below:

- Configuration :
To create settings for connection/ Command setting
- Satellite Information :
To view GPS status and perform Hot/ Warm/ Cold Start
- Data Log List :
Download of logged data/ Use of Google earth for showing tracks

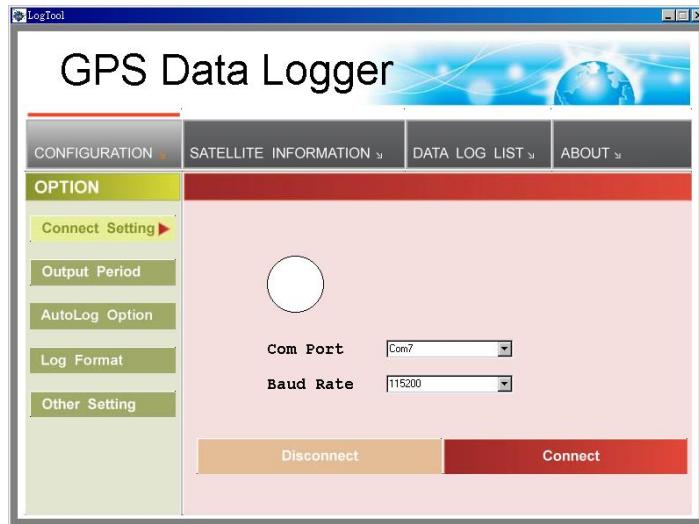
- About:
Software version and company information...etc.



3.2.1 Configuration

i. Connection Setting :

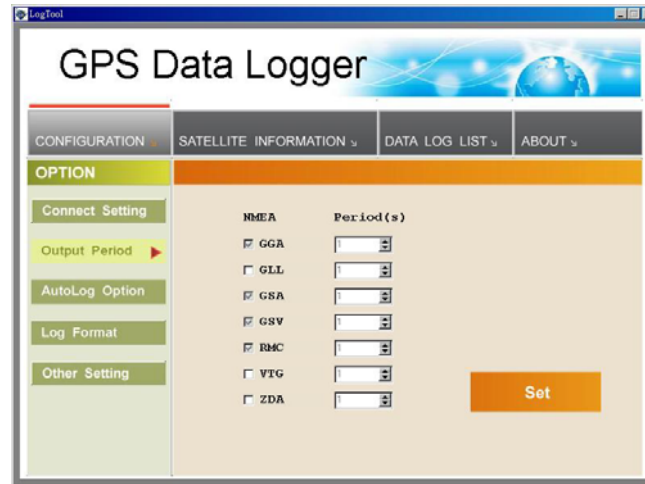
This is to build a connection between your PC and iBT-GPS data logger.



1. Please go to "device manager" and find out the Virtual Com Port number of iBT-GPS data logger (check Virtual Com Port number of iBT-GPS data logger)
2. Select correct Port (COM7 used in this example) and set BaudRate at a fixed 115200. Then click on "Connect" to build a connection. GPS status in the "SATELLITE INFORMATION" section will start to show when you click on it.
Note: Please remember to plug in the USB cable to connect your PC and iBT-GPS
3. To stop connection anytime, just click on "Disconnect".

ii. Output Period :

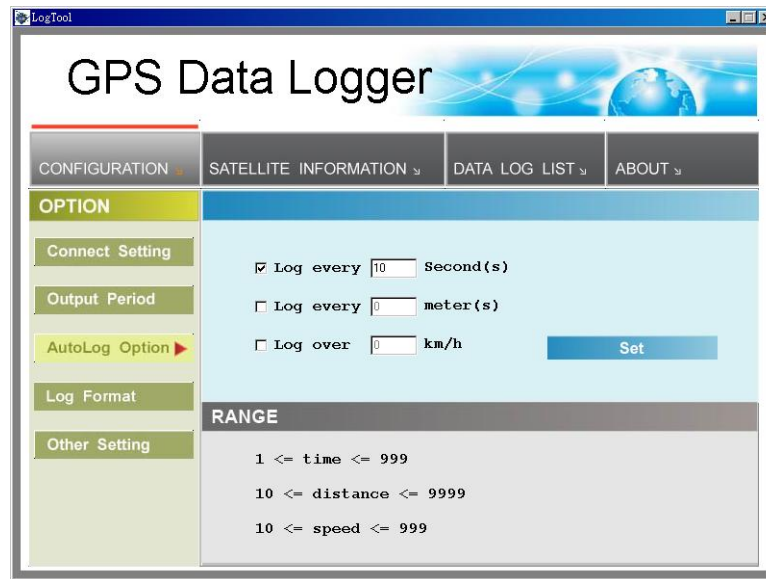
This is to set NMEA output selection for the Bluetooth interface in the NAV mode.



- Check the NMEA type -> Choose output period -> Set
- For selecting NMEA data output (RMC, GSV, GSA, GGA are compulsory data, user are not allowed to DE-SELECT)
- **NMEA setting here will only affect the NMEA sentences for navigation usage. This has nothing to do with logger's data recording.**
- Period (s): For example, GLL (4) stands for GLL sentence update every 4 seconds.

iii. AutoLog Option (Change Recording Interval) :

This is to set the record method.



1. Setting log time interval : Configure log interval between 1~999 sec.
For example, “10 Seconds” stands for iBT-GPS will record one data every 10 seconds.
2. Setting log distance : Configure log interval between 10~9999 meter(s)
For example, “1000 meters” stands for iBT-GPS will record one data every 1000 meters.
3. Setting log speed :
Configure log interval between 10~999 km/h. Set speed at the highest

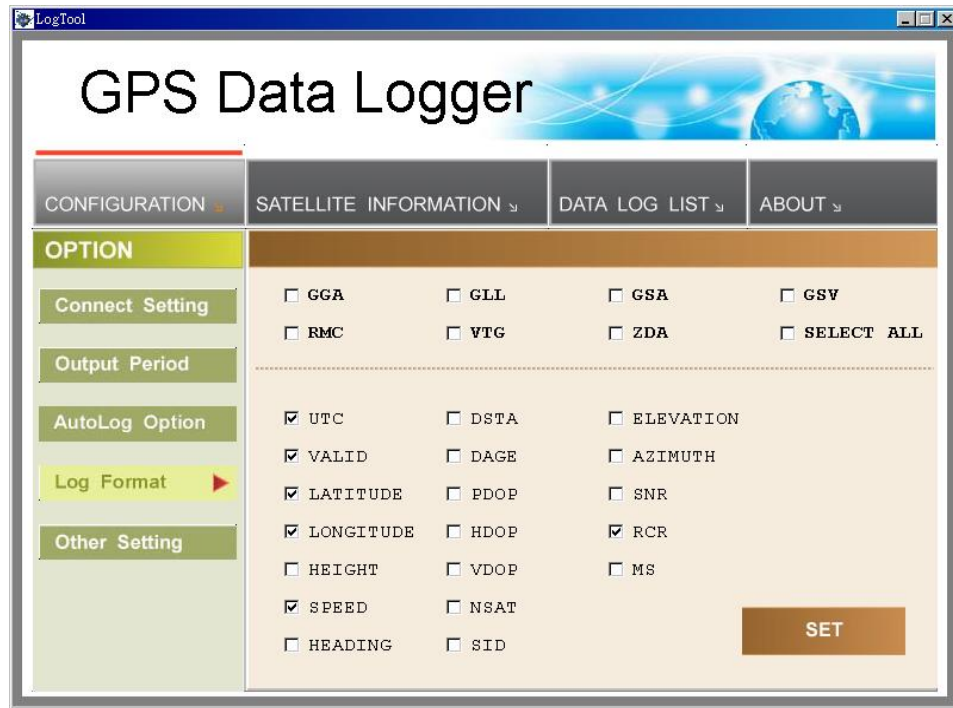
rate. If any log data exceeds this speed, it will be recorded.

For example, “100km/hr” stands for iBT-GPS will record one data when exceeding 100km/hr. The number of data count shows the time user exceeds 100km/hr.

Note: Can be Mixed to log by time interval/ distance/ speed.

iv. Log Format :

The table presents which information will be recorded for each way points.



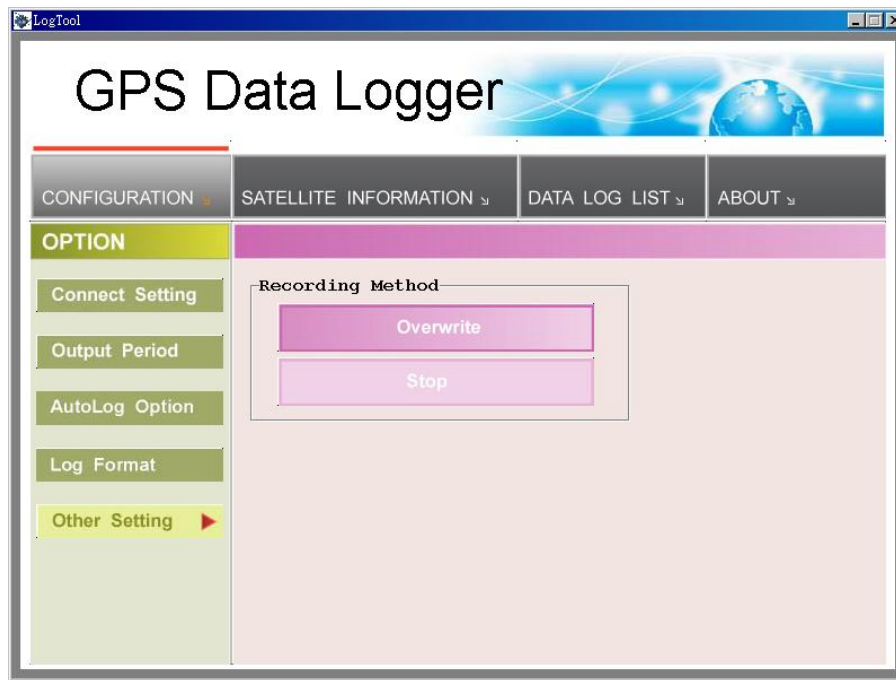
- Normally, UTC, latitude, longitude, valid, speed and RCR should be chosen. Therefore, the number of recorded data is estimated to be about 74,000 points.
- ELEVATION, AZIMUTH and SNR can only be checked when SID is checked.

UTC	Universal Coordinated Time, formerly GMT or Greenwich Mean Time.
VALID	Data fix or not
LATITUDE	A north/south measurement of position perpendicular to the earth's polar axis.
LONGITUDE	An east/west measurement of position in relation to the Prime Meridian, an imaginary circle that passes through the north and south poles.
HEIGHT	The altitude of a place above sea level or ground level.
SPEED	Rate of motion
HEADING	The compass direction in which the longitudinal axis of a ship or aircraft points
DSTA	DGPS station ID number
DAGE	Time in seconds since last DPGS update
PDOP	(Positional Dilution Of Precision) ; Position accuracy; 3D-coordinates
HDOP	(Horizontal Dilution Of Precision); horizontal accuracy; 2D-coordinates
VDOP	(Vertical Dilution Of Precision); vertical accuracy; height
NSAT	Number of Satellite (in Used, in View)
SID	Satellite ID
ELEVATION	The elevation of the satellite
AZIMUTH	Line-Of-Sight angle of the satellite

SNR	Signal to Noise Ratio
RCR	Record method: Speed/ Time/ Distance/ Push Button
MS	Mili-second

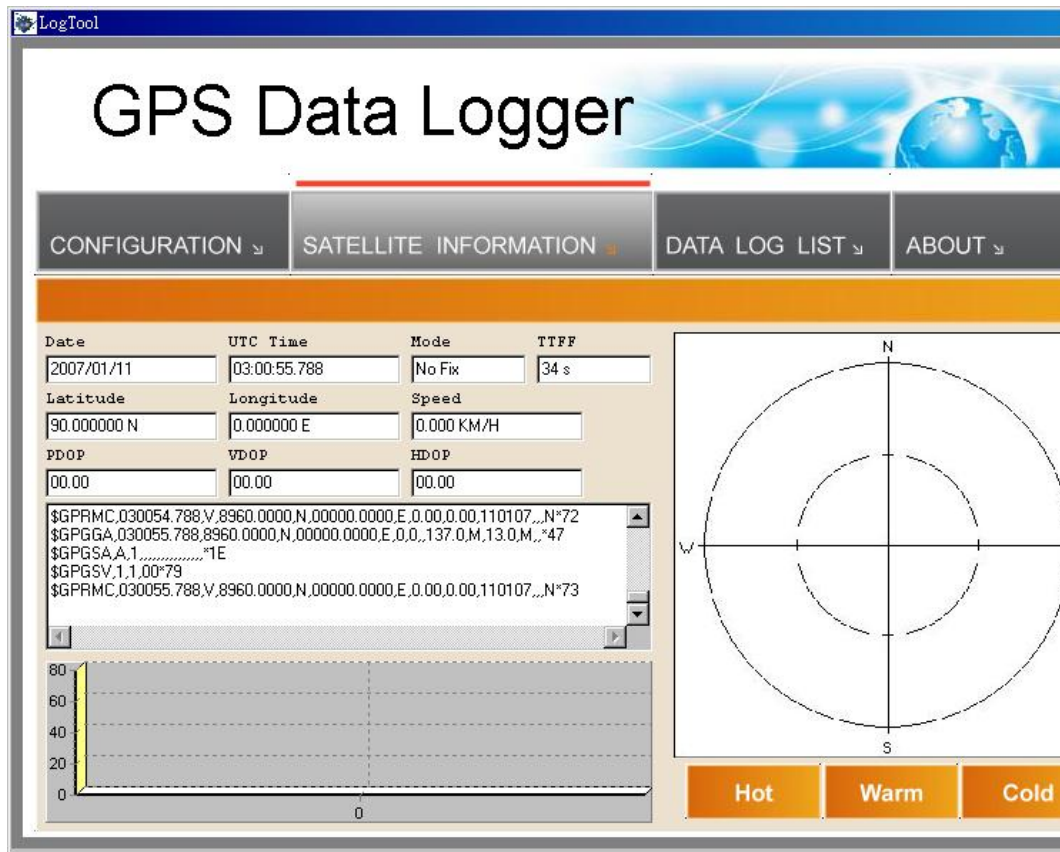
v. Other Setting :

This setting is about: when the logger's on-board Flash memory is full, what would you want the logger to do in terms of recording?



- The default setting is “Stop” (Full and stop)
- The other recording method is “Overwrite” (Repeat).

3.2.2 Satellite Information



i. GPS status view :

To check GPS acquisition condition (Reception)

Date	UTC date
UTC Time	Universal Coordinated Time, formerly GMT or Greenwich Mean Time.

Mode	(3D Fix/ 2D Fix/ No Fix)
TTF	Time to first fix
LATITUDE	A north/south measurement of position perpendicular to the earth's polar axis.
LONGITUDE	An east/west measurement of position in relation to the Prime Meridian, an imaginary circle that passes through the north and south poles.
SPEED	Rate of motion
PDOP	(Positional Dilution Of Precision) ; Position accuracy; 3D-coordinates
HDOP	(Horizontal Dilution Of Precision); horizontal accuracy; 2D-coordinates
VDOP	(Vertical Dilution Of Precision); vertical accuracy; height

ii. Hot :

 Perform hot start

iii. Warm :

 Perform warm start

iv. Cold Start :

 Perform cold start

3.2.3 Data Log List --- way to download the data from logger!

Below steps is to show the way to download the data from logger.

Step 1. Click “Stop Log” to disable log feature.

Step 2. Click “Download” to download log data to computer.

Step 3. Click “Draw Map” to map your recorded data on Google Maps

GPS Data Logger

CONFIGURATION ▾ SATELLITE INFORMATION ▾ DATA LOG LIST ▾ ABOUT ▾

Status: 10 second(s), full and stop.
Record Count: 675 Memory Used: 1%

RCR	DATE	TIME	VALID	LATITUDE	N/S	LONGITUDE	E/W	SPEED
T	2080/01/06	00:02:08	No fix	90.000000	N	0.000000	E	0.000 km/h
T	2080/01/06	00:02:09	No fix	90.000000	N	0.000000	E	0.000 km/h
T	2080/01/06	00:02:10	No fix	90.000000	N	0.000000	E	0.000 km/h
T	2080/01/06	00:02:11	No fix	90.000000	N	0.000000	E	0.000 km/h
T	2080/01/06	00:02:12	No fix	90.000000	N	0.000000	E	0.000 km/h
T	2080/01/06	00:02:13	No fix	90.000000	N	0.000000	E	0.000 km/h
T	2080/01/06	00:02:14	No fix	90.000000	N	0.000000	E	0.000 km/h
T	2080/01/06	00:02:15	No fix	90.000000	N	0.000000	E	0.000 km/h
T	2080/01/06	00:02:16	No fix	90.000000	N	0.000000	E	0.000 km/h
T	2080/01/06	00:02:17	No fix	90.000000	N	0.000000	E	0.000 km/h

Start Log Stop Log Download Erase Save Read Draw Map

i. Grid Array :

Show the detail recorded data list

ii. Memory Used :

To know how much space there are remaining in the memory

iii. Record Count :

Data record count

iv. Start Log :

Enable Log feature

v. Stop Log :

Disable Log feature

vi. Download :

To download log data to computer file (While downloading, “cancel” manu bar will appear on middle of the screen. To cease downloading, click on Cancel).

vii. Erase :

To clear all log data from GPS receiver’s memory

(Note: To perform erase, we suggest to do “Stop Log” first)

viii. Read :

To open previous travel file from user's PC (CSV File)

ix. Save :

To save the logged data in iBT-GPS's memory to user's PC (Save as CSV File/ NMEA File/ KML File). Afterward, you can open the *.csv file by clicking "Read"

x. Draw Map (Map your recorded data on Google Maps) :

Download, then just click "Draw Map"!

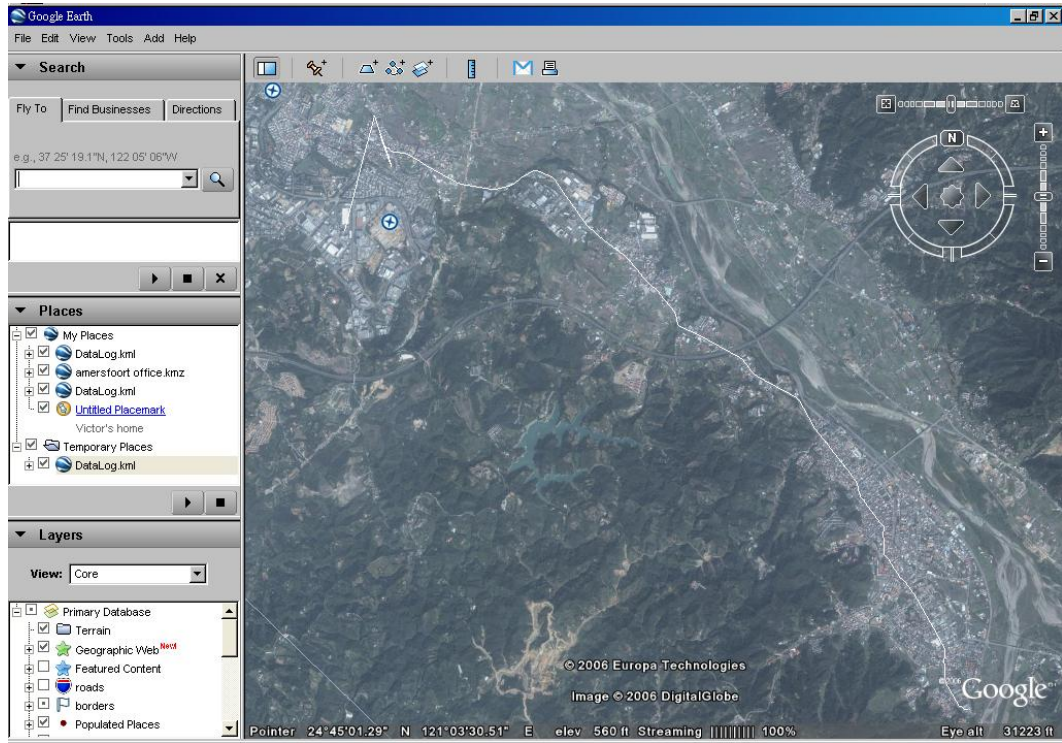
Note:

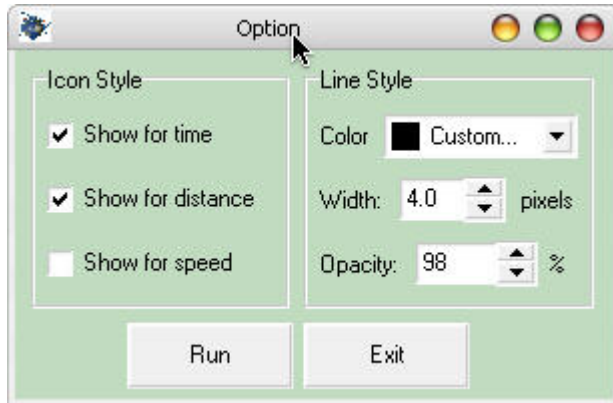
1. Google Earth is needed:

If your computer is not yet installed with Google Earth. Google Earth has free download version, go download it in the internet first. For more information, please visit <http://earth.google.com/>.

2. Enable Internet connecton:

To display the track points on Google Maps, your PC must have the Internet connection enabled.










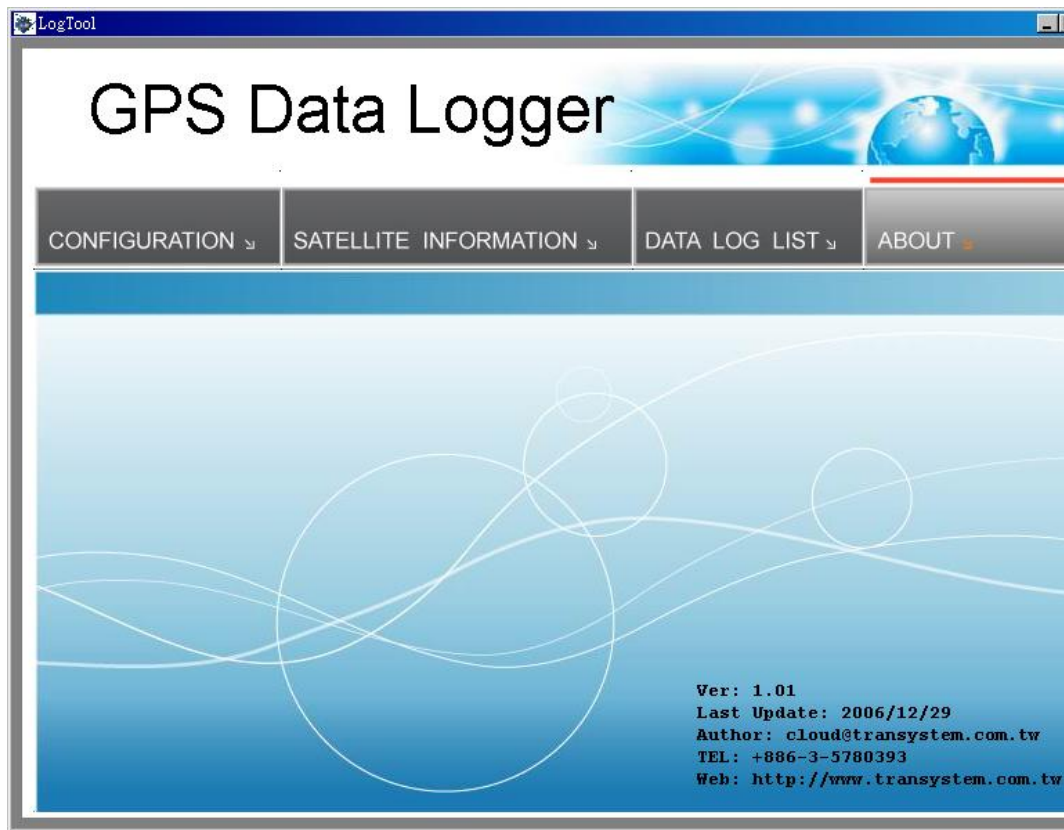
To show route in Google Earth, there are 2 options for you to choose from:

- Icon Style
- Line Style

Some icons:

	Push to log, show your favorite Points of Interest
	Logged by time interval
	Logged by distance
	Logged by speed
	Mixed logged points

3.2.4 About



Software version and company information...etc.

Appendix

Appendix A. Specifications

General	
Frequency	L1,1575.42MHZ
C/A Code	1.023MHZ
Datum	WGS84
Performance Characteristics	
Position Accuracy	Without aid: 3.0m 2D-RMS
	<3m CEP(50%) without SA(horizontal)
	DGPS (WAAS,EGNOS,MSAS,RTCM):2.5m
Velocity Accuracy	Without aid: 0.1m/s
	DGPS (WAAS,EGNOS,MSAS,RTCM):0.05m/s
Acceleration	Without aid:<4g
	DGPS (WAAS,EGNOS,MSAS,RTCM):<4g
Timing Accuracy	50 ns RMS
Reacquisition Time	<1s
Hot start	1s
Warm start	33s
Cold start	36s
Sensitivity	Acquisition:-144dBm
	Tracking:-158dBm
Update	1Hz

Dynamic	
Altitude	Maximum 18,000m
Velocity	Maximum 515m/s
Acceleration	Maximum 4g
Power	
Input Voltage	Vin : 5.0V±10%
Power Consumption	40mA
Battery	Built-in rechargeable 1000mAH Lithium battery
I/O	
Available Baud Rates	115200 bps
Protocols	NMEA 0183 v3.01
Environment	
Operating Temperature	-10 ~ 60C
Storage Temperature	-20 ~ 60C
Charging	0 ~ 45C
Bluetooth	
Standard	Fully compliant with Bluetooth V1.2
Output Power	0dBm (Typical),ClassII
Range	Up to 15 meters
Bluetooth Profile	Serial Port Profile(SPP)
Frequency	2.4G ~ 2.4835GHz ISM Band
Security	Yes

USB Bridge	
Standard	Fully compliant with USB2.0
Full - speed	12Mbps
Dimension	46.5 x72.2 x20 mm
Data Log	
16Mb serial Flash ROM	
Up to 100,000 way points.	
Log GPS data by time interval/ distance/ speed limit.	
Log GPS data by button push.	
User can configure settings by using utility.	

Appendix B. Certification

FCC Notices

This device complies with part 15 of the FCC rules. Operation is subject to the following two conditions:

1. This device may not cause harmful interface, and
2. This device must accept any interference received, including interference that may cause undesired operation.

FCC RF Exposure requirements:

This device and its antenna(s) must not be co-located or operation in conjunction with any other antenna or transmitter.

NOTE: THE MANUFACTURER IS NOT RESPONSIBLE FOR ANY RADIO OR TV INTERFERENCE CAUSED BY UNAUTHOURIZED MODIFICATION TO THIS EQUIPMENT. SUCH MODIFICATIONS COULD VOID THE USER'S AUTHORITY TO OPERATE THE EQUIPMENT.

Industry Canada Caution

The installer of this radio equipment must ensure that the antenna is located or pointed such that it does not emit RF field in excess of Health Canada limits for the general population; consult Safety Code 6,

obtainable from Health Canada's website.

"www.hc-sc.gc.ca/rab"

CE Notices

CE 0984 

Is herewith confirmed to comply with the requirements set out in the Council Directive on the Approximation of the Laws of the Member States relating to Electromagnetic Compatibility (89/336/EEC), Low-voltage Directive (73/23/EEC) and the Amendment Directive (93/68/EEC), the procedures given in European Council Directive 99/5/EC and 89/336/EEC.

The equipment was passed. The test was performed according to the following European standards:

- EN 300 328-2 V.1.2.1 (2001-08)
- EN 301 489-1 V.1.4.1 (2002-04) / EN 301 489-17 V.1.2.1 (2002-04)
- EN 50371: 2002
- EN 60950: 2000

Appendix C. Warranty Information

Thank you for your purchase of GPS product from the company.

The company warrants this product to be free from defects in materials and workmanship for one year from the date of purchase. The warranty for accessories is six months. The stamp of distributor or a copy of the original sales receipt is required as the proof of purchase for warranty repairs. The company will, as its sole option, repair or replace any components, which fail in normal use. Such repair or replacement will be made at no charge to the customer for parts or labor. The customer is, however, responsible for any transportation costs.

This warranty does not cover failures due to abuse, misuse, accident or unauthorized alteration of repairs. The company assumes no responsibility for special, incidental punitive or consequential damages, or loss of use.

Warranty

Model number: _____

Series number: _____

Data of purchase: _____

Name: _____

Address: _____

City, Zip code: _____

State, Country: _____

E-mail address: _____

Distributor Stamp Here