



# AlacrityPC User Manual

Version 1.0.2

Ken Salter  
4/12/2008

# AlacrityPC User Manual

---

Version 1.0.2 – Last Updated 12 April 2008

Written by Ken Salter

<http://www.alacritypc.com>

## What is AlacrityPC?

AlacrityPC is a utility designed to help you get the most performance out of your computer when running resource intensive applications, like modern games. It does this by shutting down unnecessary services and programs before starting your application. When you finish your application, those services and programs can be automatically restarted.

AlacrityPC also provides some additional optimizations, like memory defragmenting, removing your desktop background, shutting down the desktop shell and Vista Sidebar, and forcing background tasks to execute.

AlacrityPC is the sequel to FSAutoStart. It is written in C# .NET 2.0.

## What are Profiles?

AlacrityPC uses the concept of profiles. A profile consists of the service and programs you have selected to be shutdown (and/or restarted), any additional optimizations you want to run, and the application(s) that you want to run after you have optimized your system.

A profile can be of two types:

- **Top level:** A top level profile can run as is or be used as a parent profile to other profiles. It cannot inherit from other profiles. If it is a parent, any settings take precedence over the child profile. Top level profiles are useful when you have a number of applications you need to support and want to make changes that are global to all the applications. For example, you can turn on defrag memory in the parent profile, and all child profiles will inherit this setting.
- **Inherited:** An inherited profile inherits any settings from its parent profile. The user can then add more services or programs to shutdown, enable different optimizations, and specify different programs to launch. An inherited profile cannot be a parent to another profile.

## Main Window

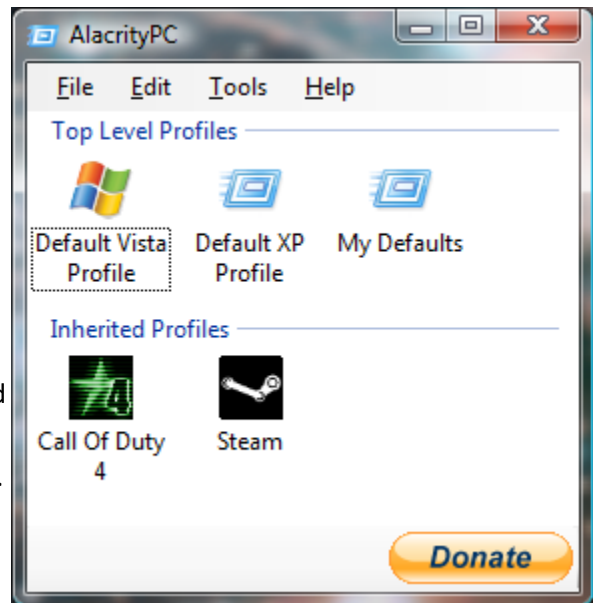
The main window of AlacrityPC displays the Top Level and Inherited profiles.

You can right click on a profile to bring up a context menu. This menu allows you to edit, delete, rename, copy, or start the profile.

To create a new profile, select the File menu option, and then select New.

You can create a shortcut to a profile by clicking on and dragging the profile to your desktop or other folder. Opening the shortcut will automatically run the profile.

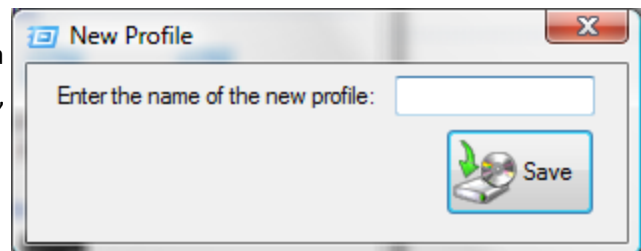
You can toggle the group list display and whether to check of updates on startup by using the Tools menu.



## Creating a New Profile

Enter the name you wish to give the profile. You can use any characters that are normally used for a filename, including spaces. When you are finished, click on the Save button. To cancel, click on the red X.

Your new profile will be created, and the Edit Profile window will automatically display.



## Editing a Profile

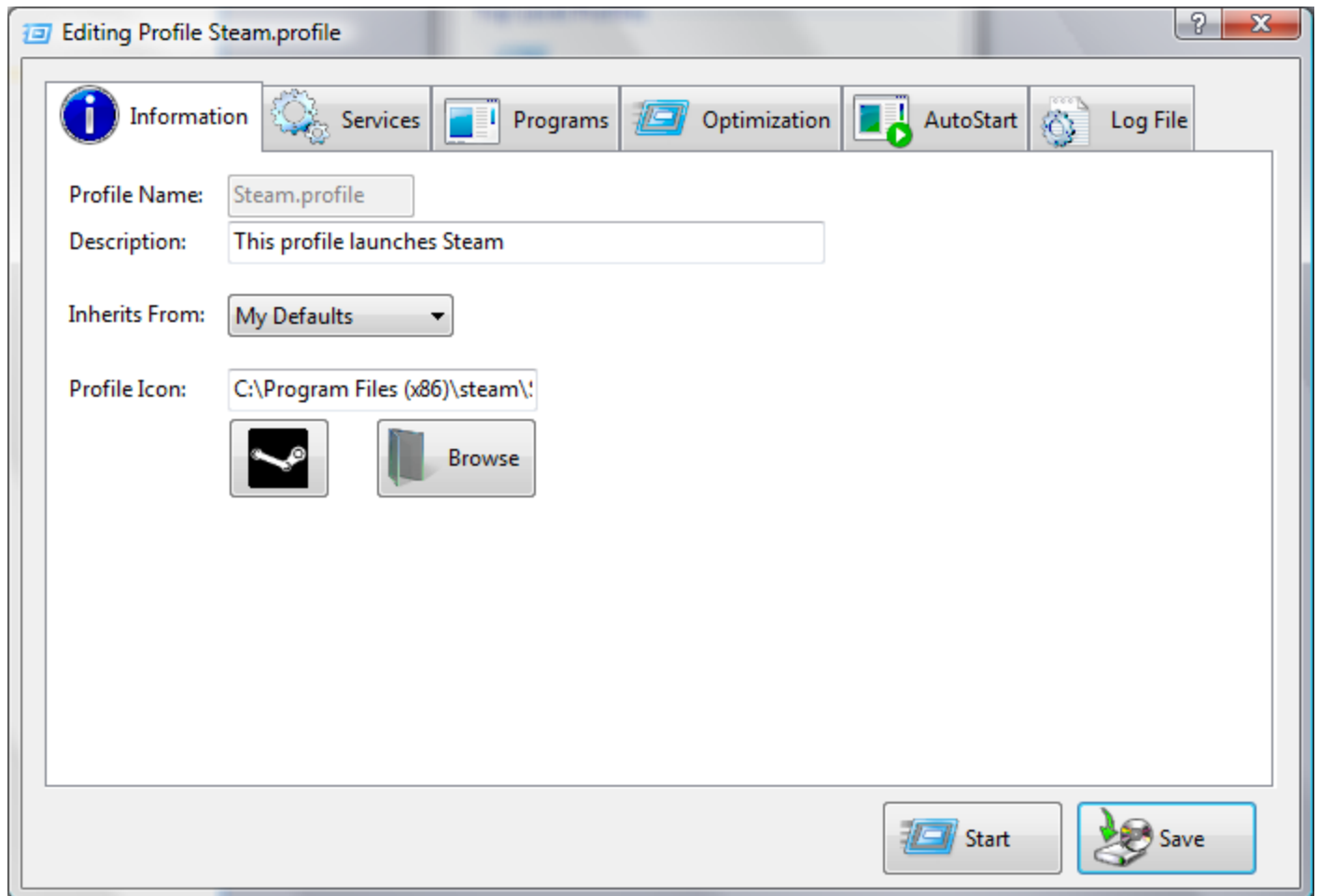
Editing a profile displays the Edit Profile window. The window contains tabs with the different categories of features you can change.

The first tab is called Information. Here you can edit a description for the profile. You can enter any information you want here; it is for your reference.

The Inherits From combo box allows you to select which Top Level profile you wish to inherit settings from, or None if you do not wish to inherit.

The Profile Icon can be set to any icon located in an executable (exe) or dynamic link library (dll) file. Click the Browse button to select the file whose icon you wish to use.

If you need help on any of the fields on any tab, you can select the field and press F1, or click on the ? button on the top right, then click on the field. A balloon pop up window will appear with brief help text.



## Services Tab

The Services tab allows you configure which services you want to stop or stop and restart when you run the profile.

You can click on any column to sort the list by that column. Note the items are sorted by group first, and then by the column. Click the column again to sort by descending order. The order is indicated by the arrow on the column.

The current status of the service is displayed both as an icon and under the Status column.

To change the action you wish to perform for a service, right click on the service. A menu will appear with the types of actions you can select. They are:

Nothing	Nothing will done to the service
Stop	The service will be stopped if it is running. It will not be started after the monitored programs are closed.
Stop then Start	The service will be stopped if it is running, and then restarted once the monitored programs are closed.
Start	The service will be started if it is stopped. It will not be stopped after the monitored programs are closed.

Once you select an action, the service will be moved to that group in the list.

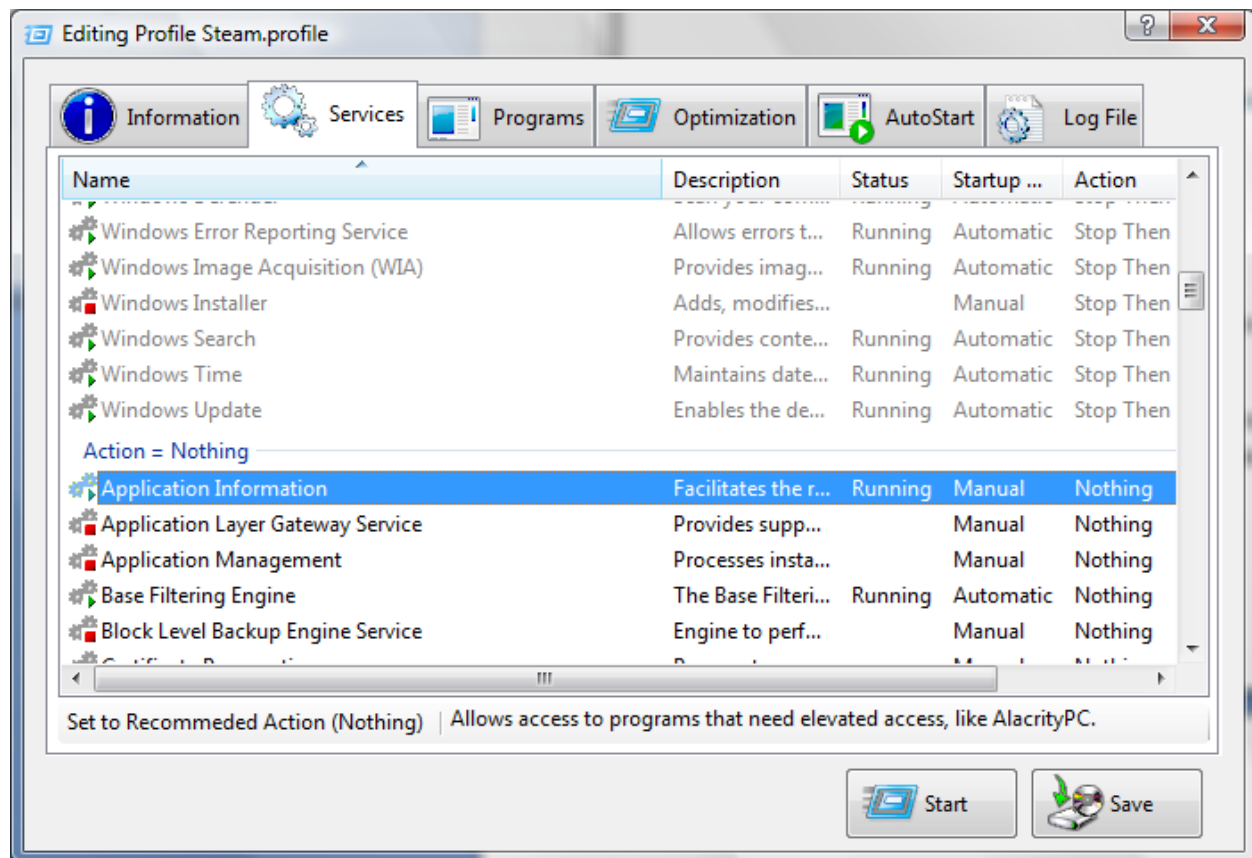
If you select a service that has dependent services, you will be notified which services they are and asked if you wish to continue. If you select yes, then those services will automatically be marked with the same action that you selected.

If you are inheriting from a Top Level profile, any services that were marked with an action in the Top Level profile will appear here with a (Inherited) note on its Action.

To set more than one service to the same action, you can highlight multiple services by holding down the Shift key and moving the mouse over the services. Once you have highlighted all the services you want, right click and select the Action.

AlacrityPC allows English version of Windows to display information about services from the BlackViper.com web site. Select the service, right click, and select View Info About. If the service is listed on BlackViper.com, the page will be displayed in your default browser. BlackViper.com is an excellent resource for services, and can recommend which services you may want to shutdown.

A status bar is available at the bottom of the Service list showing the recommended action for a service if AlacrityPC recognizes the service. You can click on the recommended action to automatically set the action for the selected service. If you highlight multiple services, clicking will set all the services to their recommended actions. The recommended actions are derived from information available from the BlackViper web site.



## Programs Tab

The Programs Tab displays all programs currently running on your computer. You can select what action to perform on the program, similar to the Services Tab. All programs are displayed, even if they are running under different users.

You can click on any column to sort the list by that column. Note the items are sorted by group first, and then by the column. Click the column again to sort by descending order. The order is indicated by the arrow on the column.

The Status column indicates if the program is currently running.

If programs are started or stopped while you are on this tab, they will be displayed in the tab (not applicable for Windows 9x)

To change the action you wish to perform for a program, right click on the program. A menu will appear with the types of actions you can select. They are:

Nothing	Nothing will done to the program
Stop	The program will be stopped if it is running. It will not be started after the

	monitored programs are closed.
Stop then Start	The program will be stopped if it is running, and then restarted once the monitored programs are closed.
Start	The program will be started if it is stopped. It will not be stopped after the monitored programs are closed.

Once you select an action, the program will be moved to that group in the list.

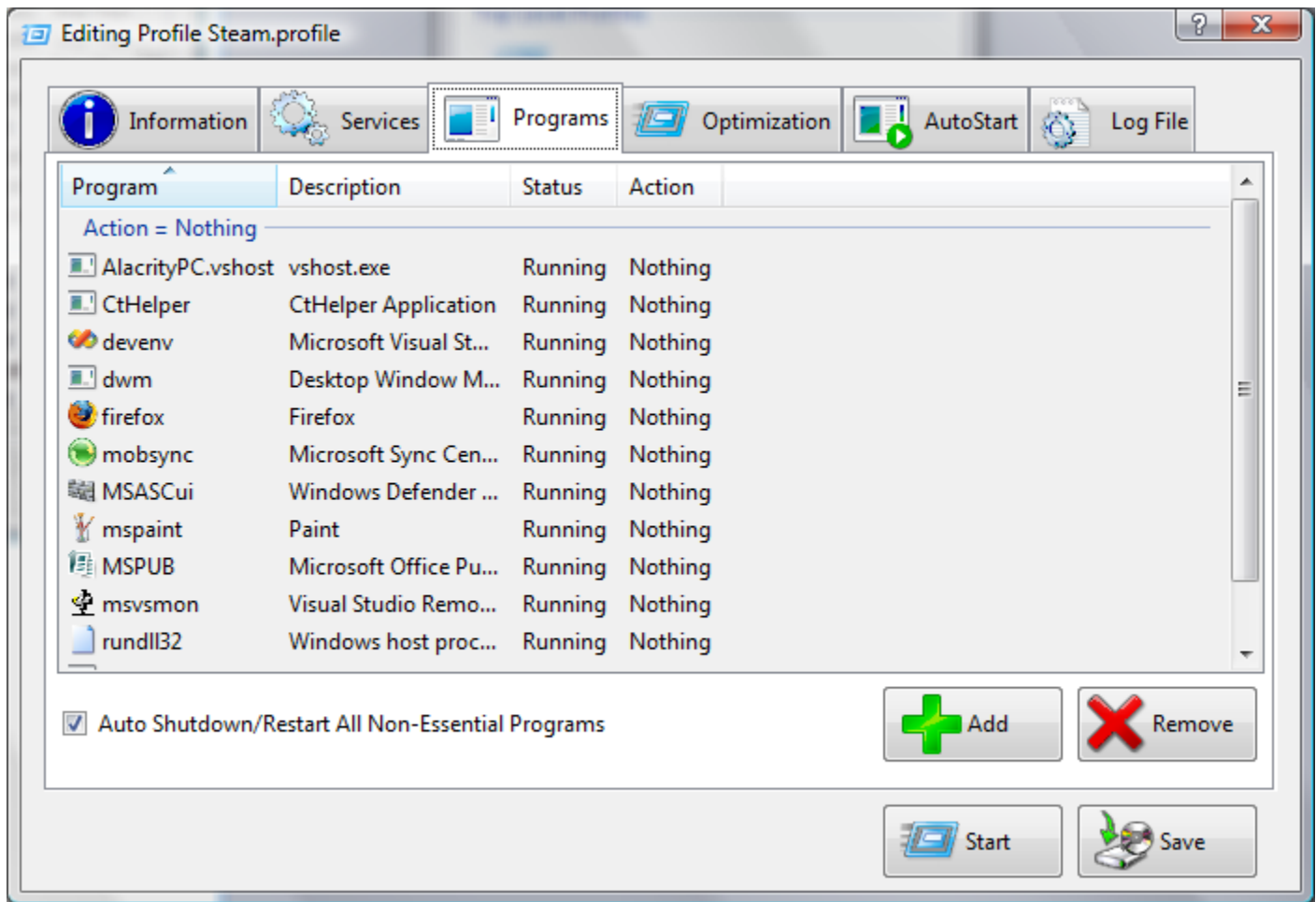
You can select the "Auto Shutdown/Restart All Non-Essential Programs" if you wish to have AlacrityPC automate this task for you. If you select this option, all non-essential programs will be terminated when the profile runs, and then restarted after the monitored programs are closed. Selecting this option will disable the list.

If there is a program you do not see in the list that you wish to make sure to perform an action on, click the Add button. A File Browser window will appear, allowing you to select the program you want to add to the list. Once you add the program, you can select an Action to perform. Use the Remove button to remove a program from the list.

If you are inheriting from a Top Level profile, any programs that were marked with an action in the Top Level profile will appear here with a (Inherited) note on its Action.

To set more than one program to the same action, you can highlight multiple services by holding down the Shift key and moving the mouse over the services. Once you have highlighted all the program you want, right click and select the Action.

If you are unsure what a program in the list does, right click on it and select View Info About. AlacrityPC will automatically launch your browser to the ProcessLibrary.com website, which should contain information about the process.



## Optimization Tab

The Optimizations Tab allows selecting different actions to perform to help optimize your computer after performing actions on services and programs.

**Defragment Memory:** Select this will defragment available free memory. You can select a Repeat value. The defragment process will be run the number of times you specify. This may help free up some additional memory.

**Shutdown/Restart Windows Shell:** Select this option to shutdown the Windows desktop shell program. If you are running a game, you will probably not use the desktop while playing. You can shut it down to gain memory and CPU resources. The desktop will be automatically restarted after you close your monitored programs.

**Remove Desktop Wallpaper:** Select this option to remove the wallpaper, which will free up a little memory. The wallpaper will be restored when the profile finishes.



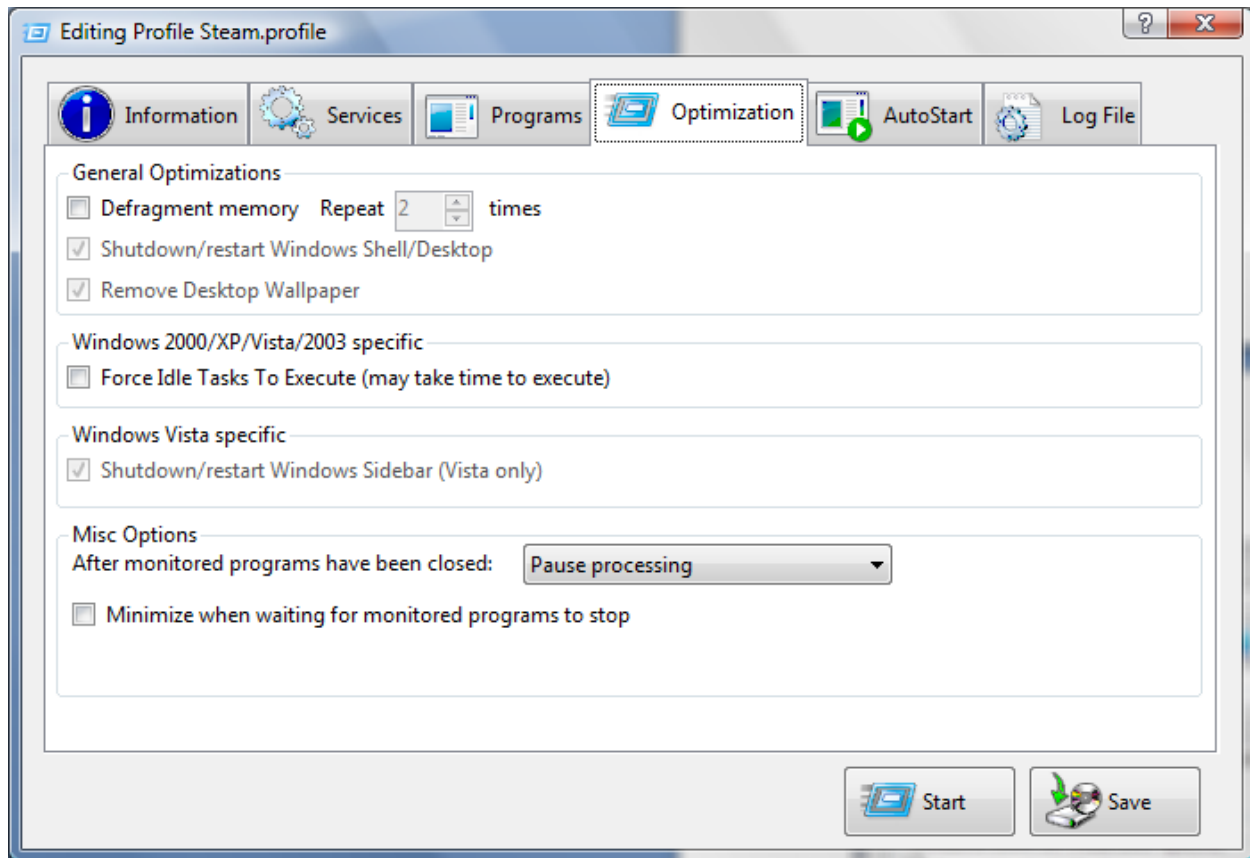
**Force Idle Tasks To Execute:** Select this force any tasks that may execute while you run your monitored program. This is used by benchmarking programs to guarantee that you get consistent performance. More information about this can be found at this [Microsoft web page](#).

**Shutdown/Restart Windows Sidebar:** Select this to automatically shutdown the Windows Sidebar. Sidebar is an application available on Windows Vista that allows different "gadgets" to run. Shutting down the Sidebar will free up memory and CPU resources. The Sidebar will be restarted once the monitored programs are closed.

**After monitored programs have been closed:** Use the drop down list to select what action you wish to perform after all the monitored programs have closed.:

- **Continue processing:** this is the default action. AlacrityPC will continue with the restart of services, programs, desktop shell, etc.
- **Pause processing:** AlacrityPC will pause and display a message to you asking for you to press the ENTER key. This will allow you to do any necessary actions before restarting services and programs. This is also useful if the monitored program is not the "real" program that was running. For example, some programs which you need to launch will themselves launch other programs (Half Life 2, for example). If you only monitor the initial program, AlacrityPC will see it terminate and then start the process of restarting services and programs. Setting this action to Pause will prevent this.
- **Shutdown the Operating System:** AlacrityPC will initiate a Shutdown of the computer when all monitored programs have stopped.
- **Restart the Operating System:** AlacrityPC will initiate a Restart of the computer when all monitored programs have stopped.

**Minimize when waiting:** Once all monitored programs have been starting, AlacrityPC can automatically minimize itself. When the monitored programs have been closed, AlacrityPC will automatically restore itself and resume profile processing. This is a useful feature if you need more desktop space available.



## AutoStart Tab

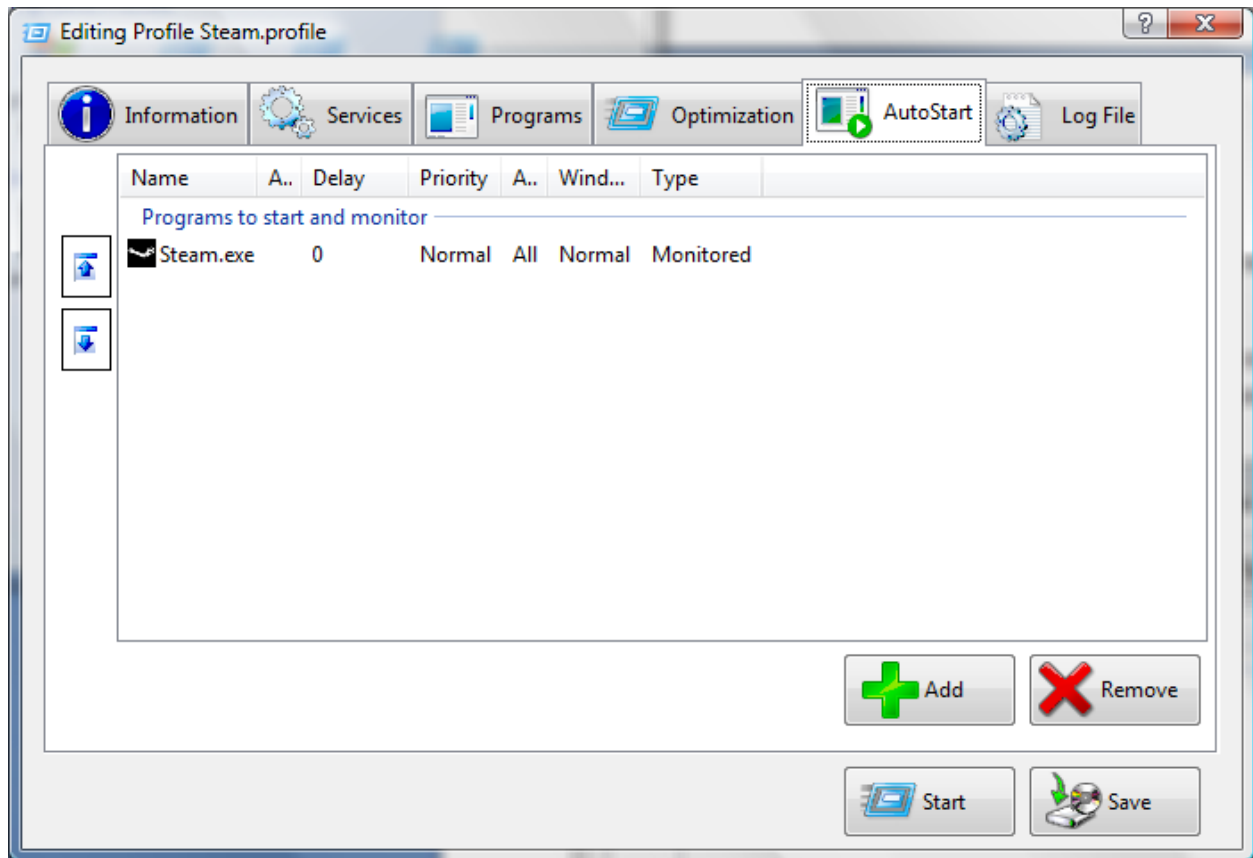
The AutoStart Tab allows you to select which programs you wish to run after optimizations have been performed.

There are three types of programs:

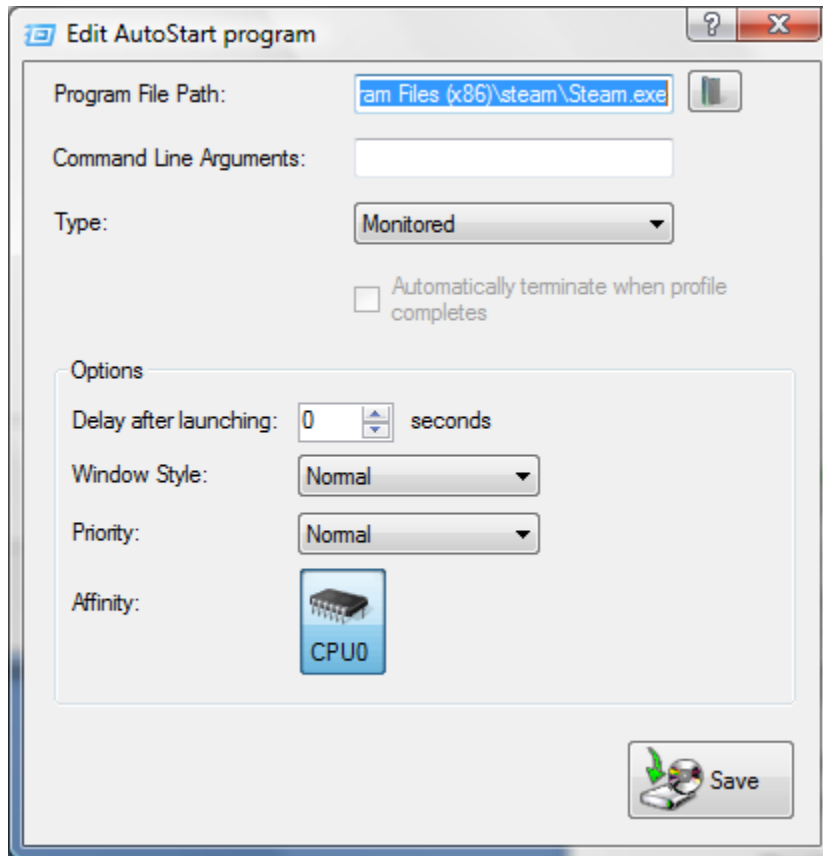
Start Before	Programs of this type are started before the Monitored programs. These programs will be automatically terminated after the Monitored programs are closed. You can use this type to start any ancillary program needed by the monitored programs that needs to start before they do.
Monitored	Monitored programs are watched by AlacrityPC. The profile process will halt while any monitored programs are running. Once all monitored programs have closed, the profile process will resume. This is where you would put the application or game that you wish to run.
Start After	Programs of this type are started after the Monitored programs are started. These programs are automatically terminated after the Monitored programs are closed.

To Add a program, click the Add button. To remove a program, select it and click the Remove button. To Edit a program, double click it in the list.

The programs of each type are run in order. To change the order, select the program and use the Up and Down arrows to the left. These buttons will shift the position of the program.



When you add or edit a program, the following window will be displayed.



The Program File Path is the full path to the program you wish to launch. Click on the folder button to the right to browse for the program.

The Command Line Arguments field allows you to specify any command line arguments the program may require.

The Type combo box allows you to select if this program is Start Before, Monitored, or Start After.

If the Type is Start Before or Start After, you can select if this program will be automatically terminated once all monitored programs have finished.

Delay after launching allows you to specify a delay after the program is started and before the next program is processed. Specify the delay in seconds.

The Window Style drop down list allows you to specify how the program window should be started: Normal, Minimized, Maximized, or Hidden

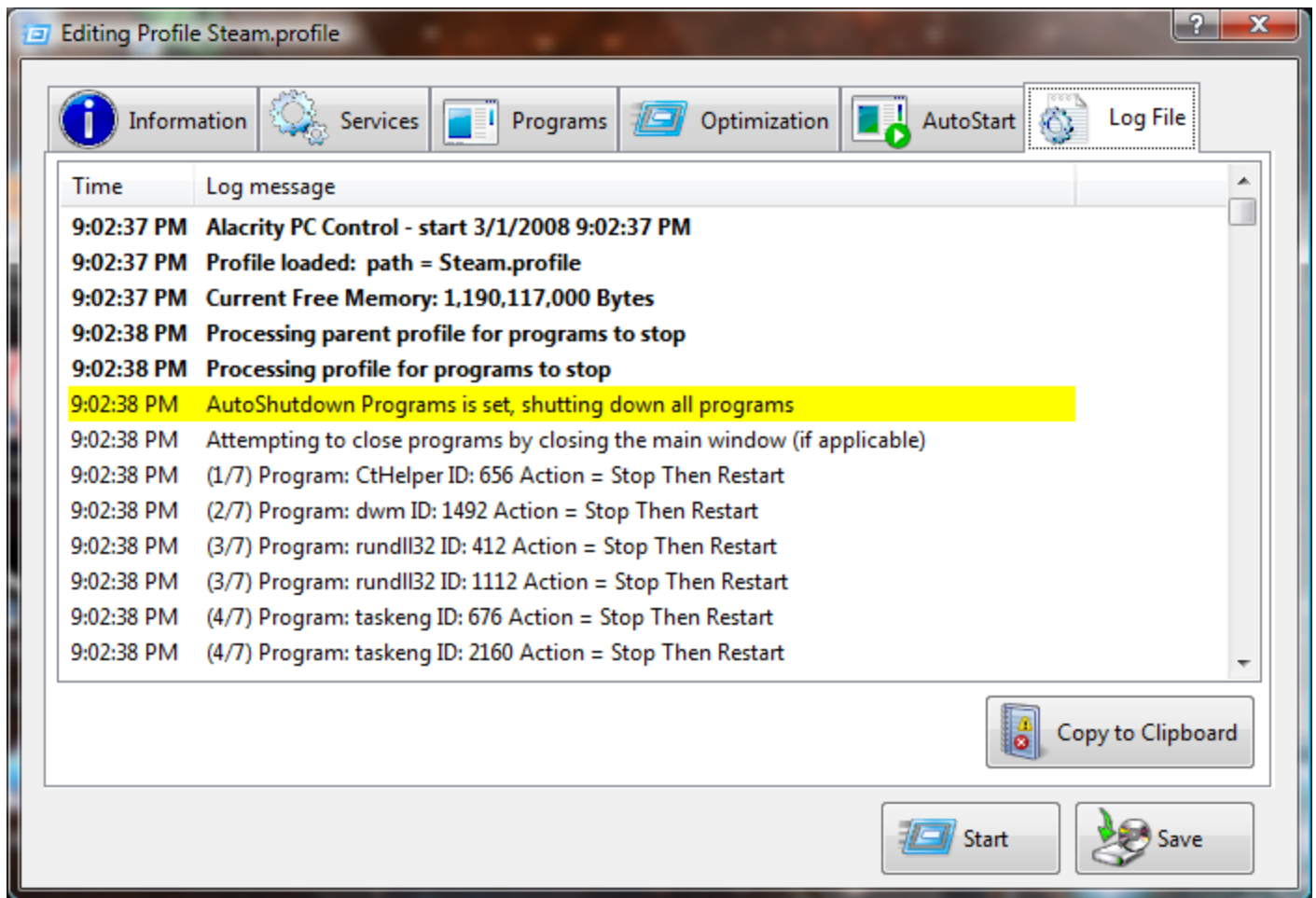
You can specify the priority that is set to the program by using the Priority drop down list. Use caution if specify Real Time - a busy program could potentially starve your computer of CPU.

Affinity allows you to specify which CPU the program should run on if you have a multi-CPU computer. By default, the program can run on all the CPUs in your system. Some programs may run better if they are confined to one CPU. Click on the CPUs to select or deselect.

## Log Tab

The Log Tab displays the log the last time this profile was run. This is useful if you wish to review any messages or view any status messages.

You can click the Copy to Clipboard button to copy all the text to the clipboard.



## Saving Changes

You can save changes at any time by clicking on the Save button. If you make any changes and attempt to close the window or Start the profile before saving, you will be prompted to save your changes first.

To abandon any changes, click on the Red X at the top right of the window.

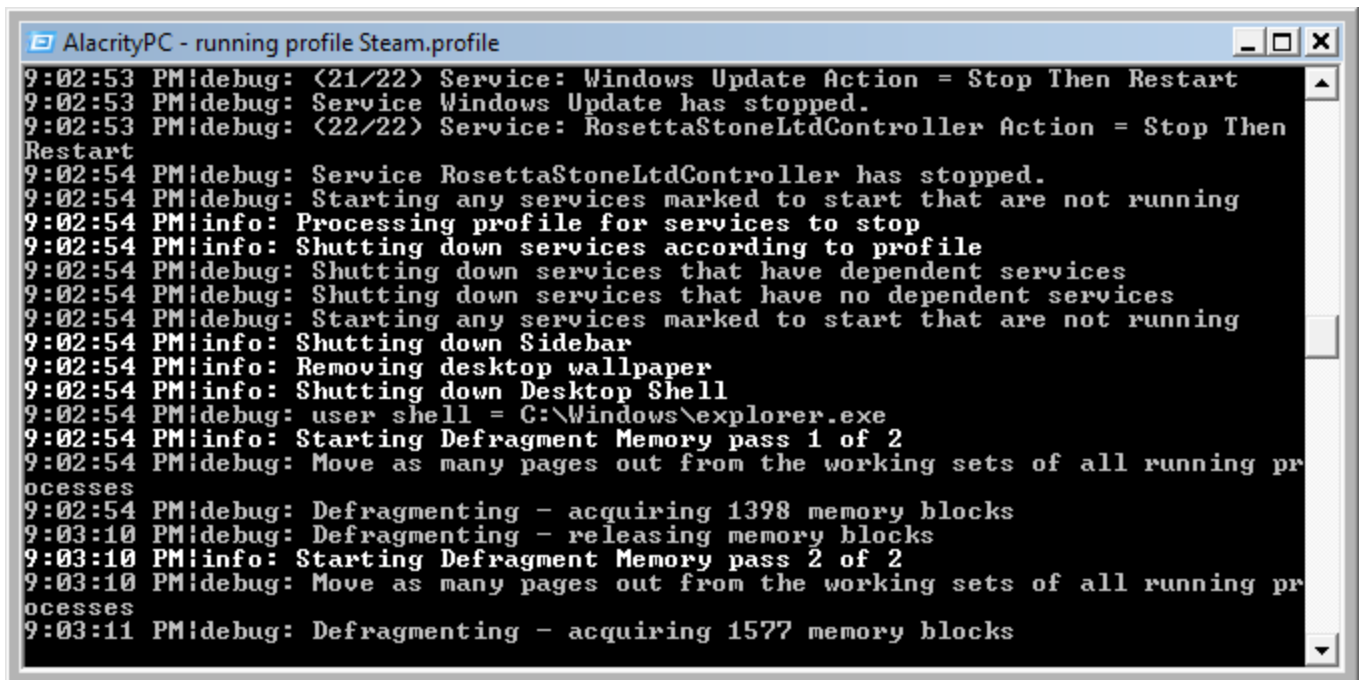
## Running a Profile

Running a profile will start the process of shutting down the services and programs, performing any optimizations, and starting the applications you specified to run.

There are several ways to start a profile. You can right click the profile in the Main Window and select Start. You can also select the Start button when you are editing a profile.

You can also create a shortcut to the profile by dragging the icon in the Main Window to the desktop, Quick View task bar, or any other folder. Opening the shortcut will run the profile.

When you run the profile, a window resembling a DOS command window will appear. This window is the AlacrityPC Control console window. In this window the profile will display information as it runs, including any warning or errors. This information is also logged and can be displayed in the Log Tab of the profile.

A screenshot of a DOS-style command window titled "AlacrityPC - running profile Steam.profile". The window has a blue title bar and standard Windows window controls (minimize, maximize, close). The background is black with white text. The text shows a sequence of commands and status messages from a program called PMidebug. The messages include stopping services like Windows Update and RosettaStoneLtdController, starting services, shutting down the sidebar and desktop wallpaper, removing the desktop shell, and running a defragmentation process in two passes. The window has a vertical scrollbar on the right side.

```
AlacrityPC - running profile Steam.profile
9:02:53 PMidebug: <21/22> Service: Windows Update Action = Stop Then Restart
9:02:53 PMidebug: Service Windows Update has stopped.
9:02:53 PMidebug: <22/22> Service: RosettaStoneLtdController Action = Stop Then
Restart
9:02:54 PMidebug: Service RosettaStoneLtdController has stopped.
9:02:54 PMidebug: Starting any services marked to start that are not running
9:02:54 PM!info: Processing profile for services to stop
9:02:54 PM!info: Shutting down services according to profile
9:02:54 PMidebug: Shutting down services that have dependent services
9:02:54 PMidebug: Shutting down services that have no dependent services
9:02:54 PMidebug: Starting any services marked to start that are not running
9:02:54 PM!info: Shutting down Sidebar
9:02:54 PM!info: Removing desktop wallpaper
9:02:54 PM!info: Shutting down Desktop Shell
9:02:54 PMidebug: user shell = C:\Windows\explorer.exe
9:02:54 PM!info: Starting Defragment Memory pass 1 of 2
9:02:54 PMidebug: Move as many pages out from the working sets of all running pr
ocesses
9:02:54 PMidebug: Defragmenting - acquiring 1398 memory blocks
9:03:10 PMidebug: Defragmenting - releasing memory blocks
9:03:10 PM!info: Starting Defragment Memory pass 2 of 2
9:03:10 PMidebug: Move as many pages out from the working sets of all running pr
ocesses
9:03:11 PMidebug: Defragmenting - acquiring 1577 memory blocks
```