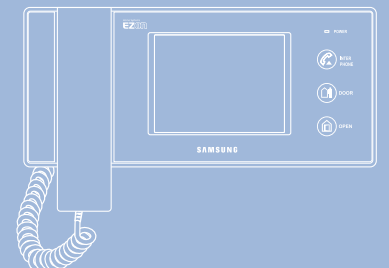




SHT-3005WM/EN  
SHT-3005WA/EN  
SHT-3005WB/EN





This marking shown on the product or its literature, indicates that it should not be disposed with other household wastes at the end of its working life. To prevent possible harm to the environment or human health from uncontrolled waste disposal, please separate this from other types of wastes and recycle it responsibly to promote the sustainable reuse of material resources.

Household users should contact either the retailer where they purchased this product, or their local government office, for details of where and how they can take this item for environmentally safe recycling.

Business users should contact their supplier and check the terms and conditions of the purchase contract.  
This product should not be mixed with other commercial wastes for disposal.

## Preface

### Precautions

- Safety Precautions ..... 2

## Chapter 1 : Preparation

### Features and Functions

- Monitor ..... 4
- Interphone (Optional) ..... 5

## Chapter 2 : Usage

### Intercom Functions

- Answering Visitors at the Door Camera ..... 6
- Monitoring ..... 7

### Interphone Functions (optional)

- Calling an Extension ..... 8/9

### Setting the monitor

- Screen Brightness Adjustment ..... 10
- Melody Volume Adjustment ..... 10
- Communication Volume Adjustment ..... 11

## Chapter 3 : Installation

### Installation

- Installing the Monitor ..... 12
- Installing the Door Camera ..... 13

### Wiring

- Monitor + 2 Door cameras + Interphone ..... 14
- Monitor + Door camera + Interphone + Multi-lobby phone ..... 15
- Monitor + Door camera + Interphone ..... 16

### Settings

- Cable Specifications ..... 17
- Other Settings ..... 17

## Chapter 4 : Useful Information

### Components

- Monitor ..... 18
- Door Camera (Optional) ..... 18

### Troubleshooting

- Check This First! ..... 19

### Product Specifications

- Monitor ..... 20
- Door camera ..... 21

### Memo

- ..... 22

### Product Warranty

- ..... 23

\* Please review the content below to ensure safe and precise product usage.

## Safety Precautions

### Warning

Neglect to follow directions can result in death or serious injury.

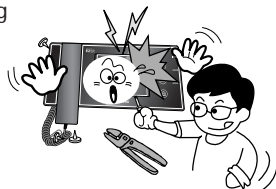
### Caution

Neglect to follow directions can result in injury or material loss.

#### Warning

Do not disassemble, install, or repair this product on your own accord.

- Contact the service center for any repair needs. Unauthorized handling may cause product malfunction, electric shock, and/or fire.



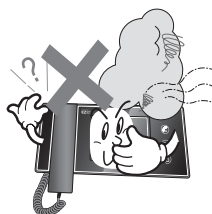
Do not subject the product to any heavy shock such as striking with a hard object (e.g. hammer, etc.).

- It may cause product malfunction, electric shock, and/or fire.



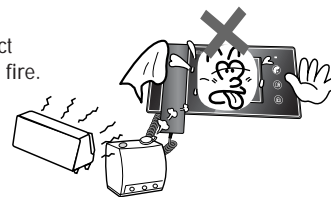
If the product emits a peculiar noise, odor, and/or smoke, immediately lower the circuit breaker connected to the electric heater switch (ONT product connection) in the power cabinet panel, and then contact the service center.

- Beware the risk of electric shock and/or fire.



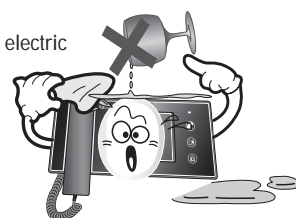
Do not place the product near a heat source (e.g. heater) or source of moisture (e.g. aquarium, humidifier).

- It may cause product malfunction and/or fire.



Do not allow water or other liquid to enter the product interior.

- It may cause product electric shock and/or fire.



Do not allow water to enter the camera interior when cleaning.

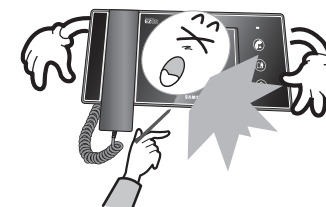
- It may result in electrical shock and/or fire.



#### Warning

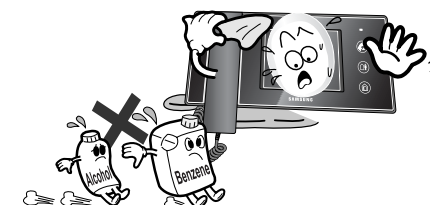
Do not use pins or any sharp, pointy objects to press buttons or to insert into holes.

- It may cause product electric shock and/or fire.



Do not clean using wet cloths or volatile substances (e.g. alcohol, benzene, thinner).

- It may cause product electric shock and/or fire.



※ After receiving service, ask the service representative to perform a safety inspection.

#### Caution

Do not hang from or pull on the installed product.

- Take special care to prevent such abuse by small children as injury may occur.



Be careful when standing up after sitting under the installed product.

- Head injuries may occur from any impact with the installed product.

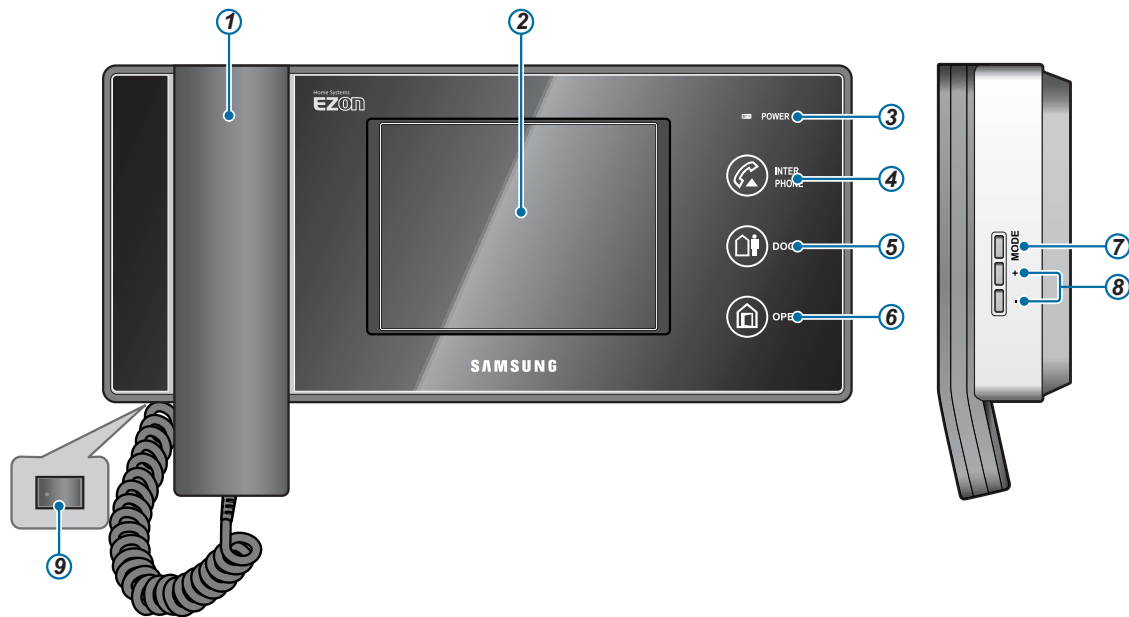


Make sure to pass the user manual onto the new home owner/tenant when moving.

- It can prevent any product misuse by the new home owner/tenant.



## Monitor



### ① Handset

This is used to answer calls from a visitor or an interphone.

### ② LCD screen

Visitors are shown on screen.

### ③ POWER indicator

When power is normal, the indicator is lit blue.

### ④ INTERPHONE button/indicator

This is used to communicate with an interphone(optional).

### ⑤ Talk[DOOR] button/indicator

This is used to answer calls from a visitor at the door camera.  
Monitoring without calling from door camera.

### ⑥ Door release[OPEN] button/indicator

This is used to open the entrance door during calls.

### ⑦ MODE button

This is used to make changes to various settings. (e.g. communication volume, melody volume, screen brightness and system reset)

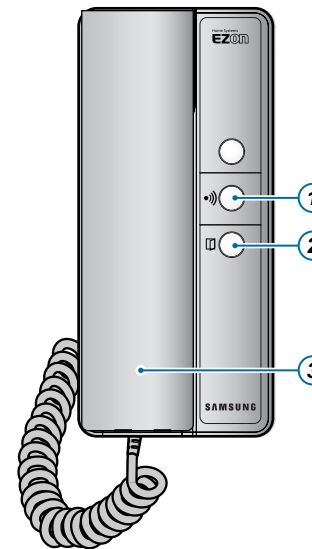
### ⑧ +/- button

This is used to adjust communication volume, melody volume and screen brightness.

### ⑨ Power switch

Use to turn power on and off.

## Interphone (Optional)



### ① Talk button

This button calls the monitor.

### ② Door release button

This is used to open the entrance door during calls.

### ③ Handset

This is used to answer calls from a visitor or monitor.



### Note

- **Communication volume level adjustment**  
During a calls, press the MODE button then press the + or - button to adjust communication volume.
- **Melody volume level adjustment**  
During sounds chime melody, press the MODE button then press the + or - button to adjust melody volume.
- **Screen brightness adjustment**  
During a monitoring, press the MODE button then press the + or - button to adjust screen brightness.
- Each settings consist of 4 phases and factory default set is 2. (Refer to 10 ~ 11 pages)

# Intercom Functions

Functions include speaking with visitors and opening the entrance door.

## ▶ Answering Visitors at the Door Camera

### 7

The monitor sounds chime melody, and the visitor appears on the screen.

To speak to the visitor, lift the **Handset**.



※ In case of Interphone(optional)  
The interphone sounds chime melody,

- ※ The monitor sound chime melody and Talk[DOOR] indicator is flashed
- ※ To change the chime melody - refer to 17 page

※ In case of Interphone(optional)  
To speak to the visitor, lift the handset.

- ※ If the HANDSET is not lifted within 20 seconds, the screen will turn off.
- ※ The maximum time per call is one minute.

### 2

During a call, pressing the **Door release [OPEN]** button will open the entrance door.



※ In case of Interphone(optional)  
During a call, pressing the Door release button will open the entrance door.

### 3

To end a call, place the **Handset** in its normal position.



※ In case of Interphone(optional)  
To end a call, place the Handset in its normal position.

#### Note

1. If a door-lock system designated by manufacturer has been installed, pressing the **Door release[OPEN]** button during calls will open the entrance door.
2. During a calls, press the **MODE** button then press the + or - button to adjust communication volume.

Functions include viewing of the unit entrance exterior area.

## ▶ Monitoring

### For 1 Door Camera

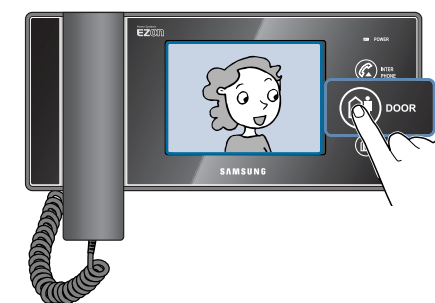
When not in use, press the **Talk[DOOR]** button, then the front view of the door camera will appear on the screen.



※ The front view of the door camera area automatically turns off after 50 ~ 60 seconds.

### For 2 Door Cameras (Optional)

If you install 2 door cameras, it will function in the following way ;  
When not in use, press the **Talk[DOOR]** button again to see the front view of door camera 1 and camera 2 sequential order.



※ The front view of the door camera area automatically turns off after 50 ~ 60 seconds.  
※ Multi-lobby phone do not support monitoring function.

# Interphone Functions (Optional)

Functions apply for calls between units when the interphone have been installed.

## Calling an Extension

### Calling from monitor to interphone

- 1** When not in use, lift the **Handset**, then press the **INTERPHONE** button.



※ The monitor sound chime melody and INTER PHONE indicator is flashed

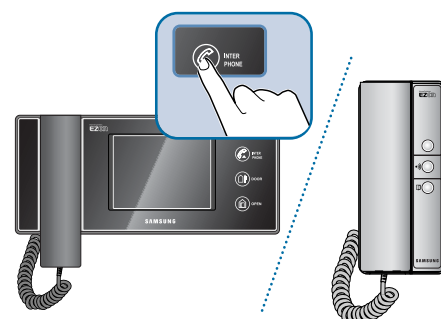
- 2** The Interphone sounds chime melody.



- 3** The call will connect when the **Handset** is lifted.



- 4** To end a call, press the **INTERPHONE** button or place the **Handset** in its normal position.

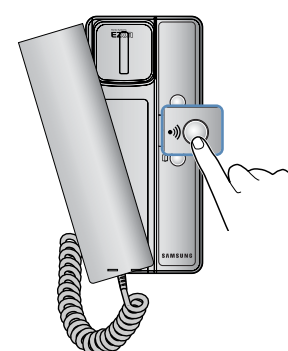


#### Note

1. If the receiving party does not answer a call within 25 seconds, the call is automatically terminated.
2. Interphone calls are automatically terminated after approximately 3 minutes.

### Calling from interphone to monitor

- 1** When not in use, lift the **Handset**, then press the **Talk** button.

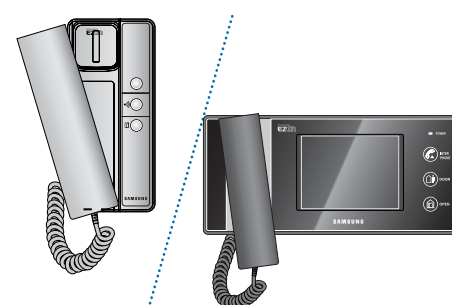


- 2** The monitor sounds chime melody.

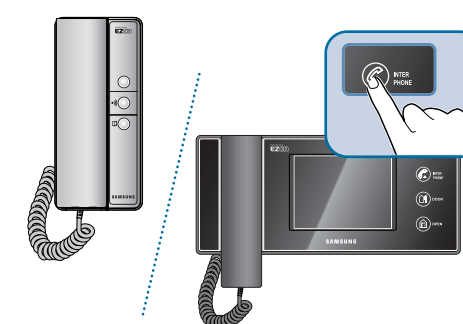


※ The monitor sound chime melody and INTER PHONE indicator is flashed

- 3** The call will connect when the **Handset** is lifted.



- 4** To end a call, place the **Handset** in its normal position or press the **INTERPHONE** button.



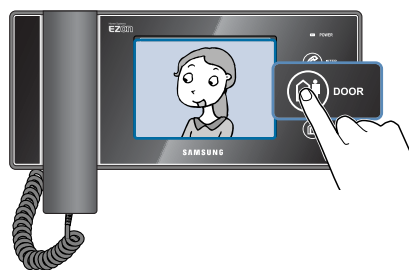
#### Note

1. If the receiving party does not answer a call within 25 seconds, the call is automatically terminated.
2. Interphone calls are automatically terminated after approximately 3 minutes.

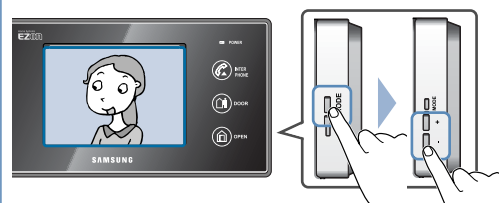
# Setting the monitor

## Screen Brightness Adjustment

- 1** During the standby or lift the handset, press the **Talk[DOOR]** button, then the front view of the door camera will appear on the screen.



- 2** Press the **MODE** button, then to adjust the brightness, using by the + or - buttons. The monitor will be stored automatically.



## Communication Volume Adjustment

- 1** During a call, press the **MODE** button.

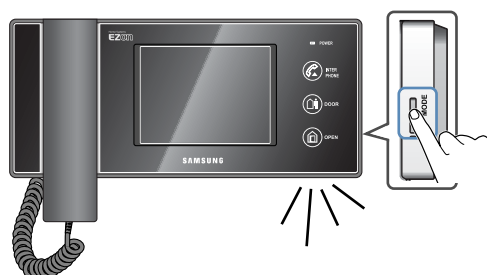


- 2** To adjust the communication volume level, using by the + or - buttons. The monitor will be stored automatically.

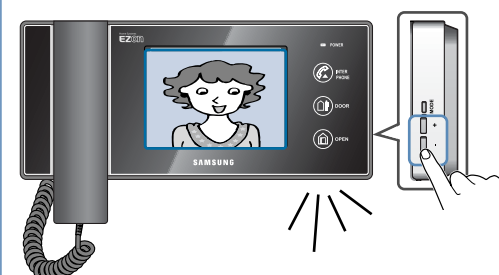


## Melody Volume Adjustment

- 1** During the standby or the monitor sounds chime melody (by a call from interphone or visitor), press the **MODE** button.



- 2** To adjust the melody volume level, using by the + or - buttons. The monitor will be stored automatically.



## System Reset

- 1** When not in use, press the **MODE** button more 5 seconds, then the monitor sounds beep.



- 2** Press the **Door release[OPEN]** buttons will reset all settings to their original factory settings.

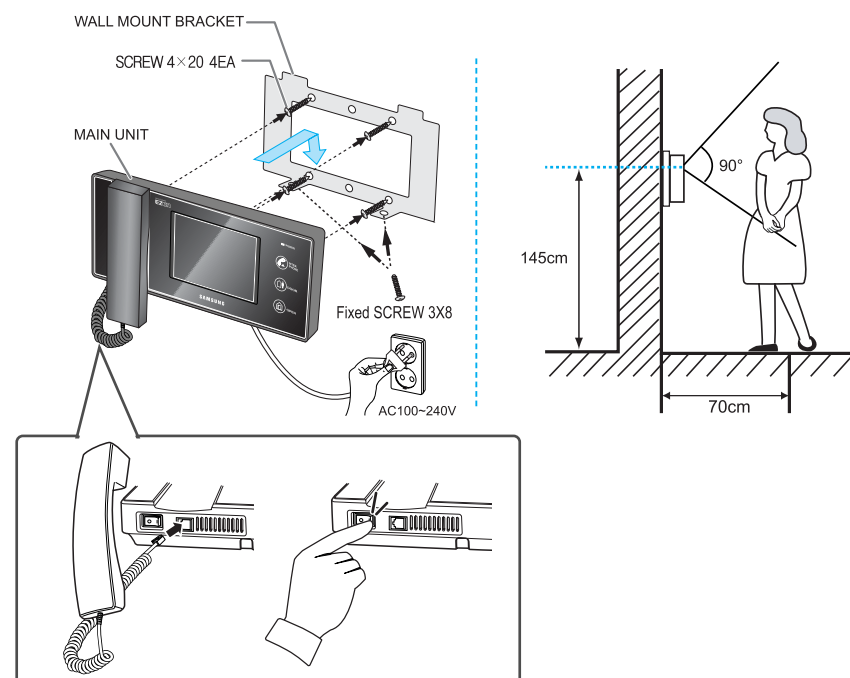


### Note

Each settings consist of 4 phases and factory default set is 2.

## ▶ Installing the Monitor

### Installation Diagram - Monitor Installation Method and Height



#### Warning

- Beware of electrical shock or fire when connecting to AC power.

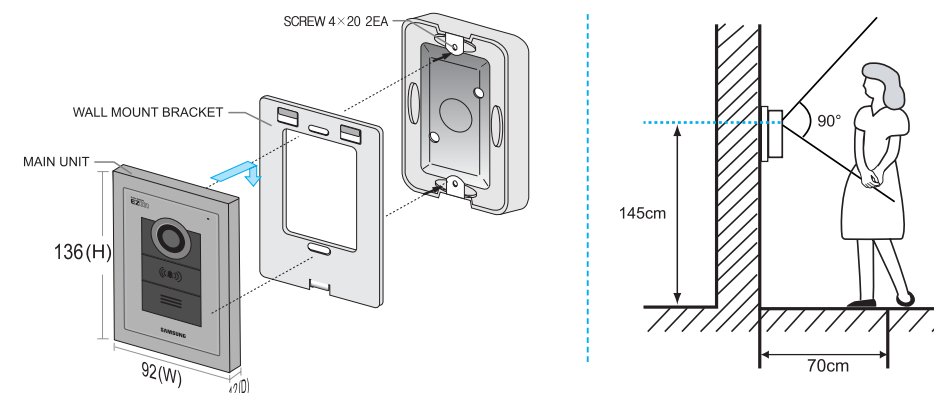
### Installation Method

1. Select the site for product installation.  
(Set product height so that the center of the monitor is 145 cm above the floor.)
2. Affix the wall mount bracket at the selected site using the 4 screws.
3. Connect the door camera wire and the Interphone (optional) wires to the monitor terminal.
4. Attaching the monitor on the bracket, then affix the 2 screws at the monitor base.
5. Connect the AC power cord.
6. Turn on the power switch at the bottom of the unit and confirm power supply to the product.

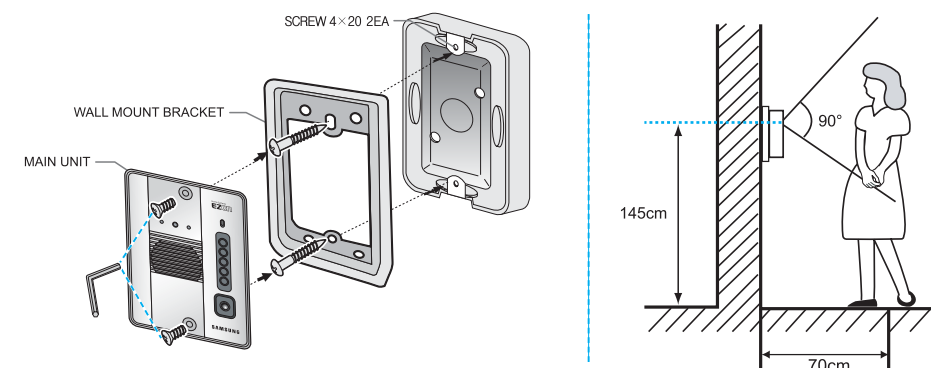
## ▶ Installing the Door camera

### Installation Diagram - Door Camera Installation Method and Height

#### ◆ SHT-CN510/EN (Optional : only for SHT-3005WA/EN model)



#### ◆ SHT-CP610/EN (Optional : only for SHT-3005WB/EN model)



### Installation Method

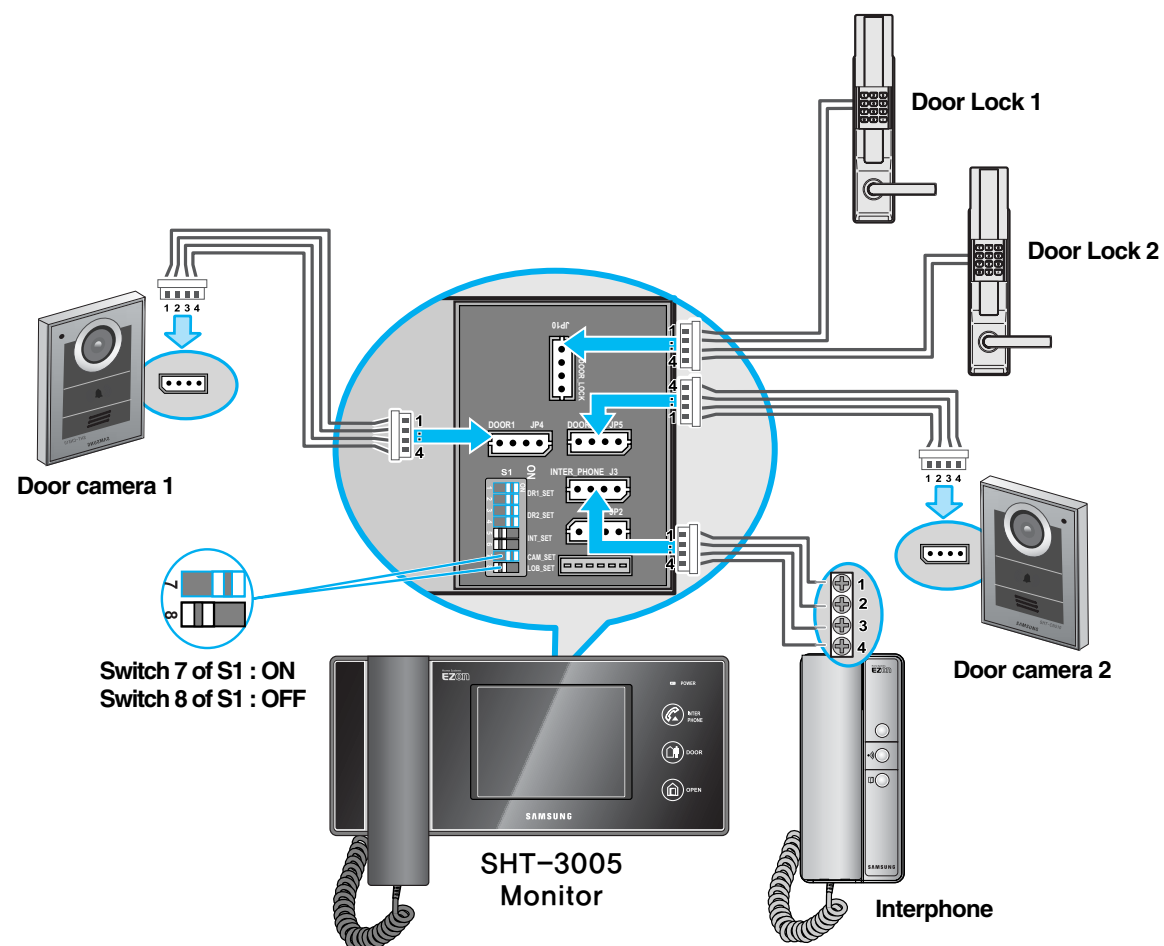
1. Select the site for product installation.  
(Set product height so that the center of the door camera is 145cm above the floor.)
2. Affix the wall mount bracket at the selected site using the two screws.
3. Connect the monitor connection wire to the door camera terminal.
4. Make sure to set to the switch 7 and 8 of S1 for number of door camera or connection of the multi-lobby phone on the monitor rear side.(Refer to 14 ~ 17 pages)
5. Confirm that the call function to the monitor is operable.

### Installation Precautions

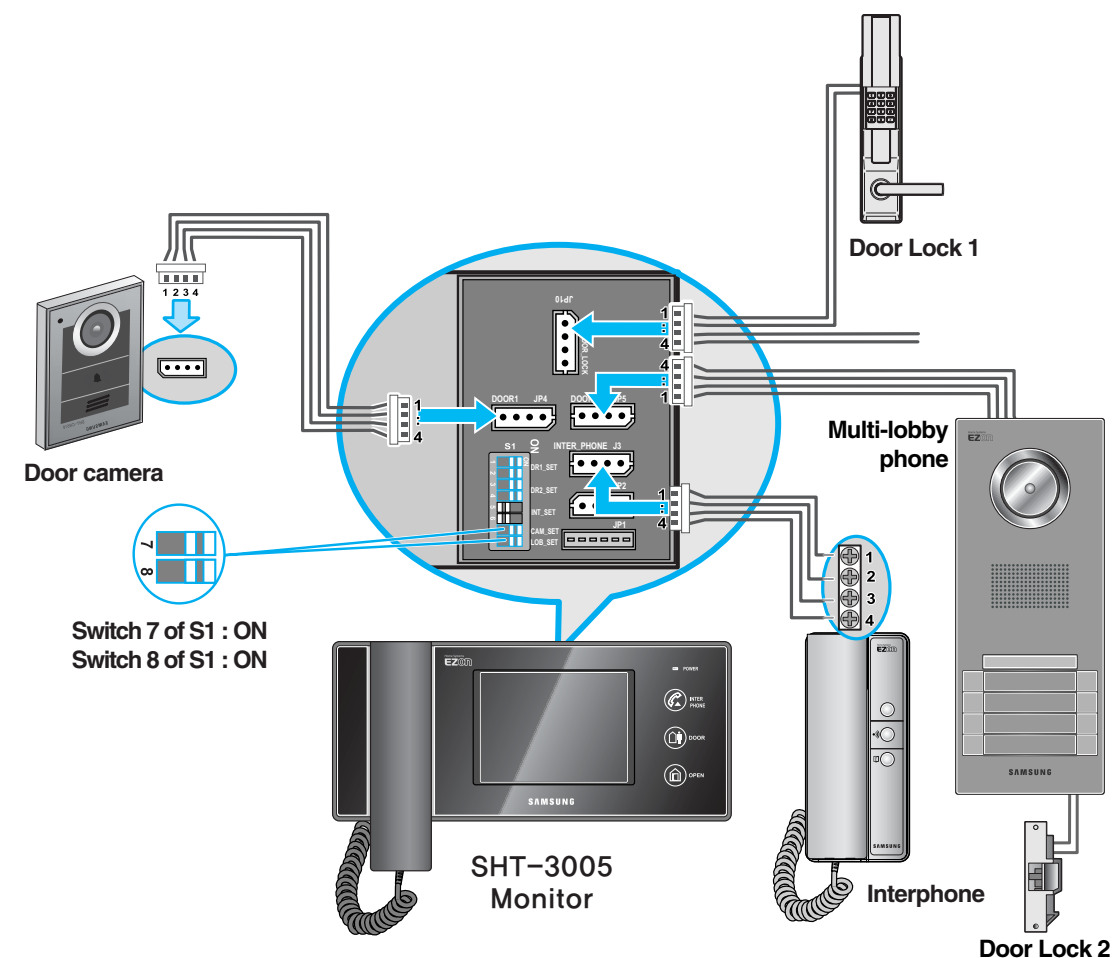
1. Avoid installation in areas that are exposed to direct sunlight, rain, chemicals, and/or high voltage electrical cables.
2. Avoid installation in areas of excessive heat or cold.

\* Be sure to establish like below the diagram for safe and precise product connection.

## Monitor +2 Door cameras + Interphone



## Monitor + Door camera + Interphone + Multi-lobby phone



### To use 2 door camera monitoring functions

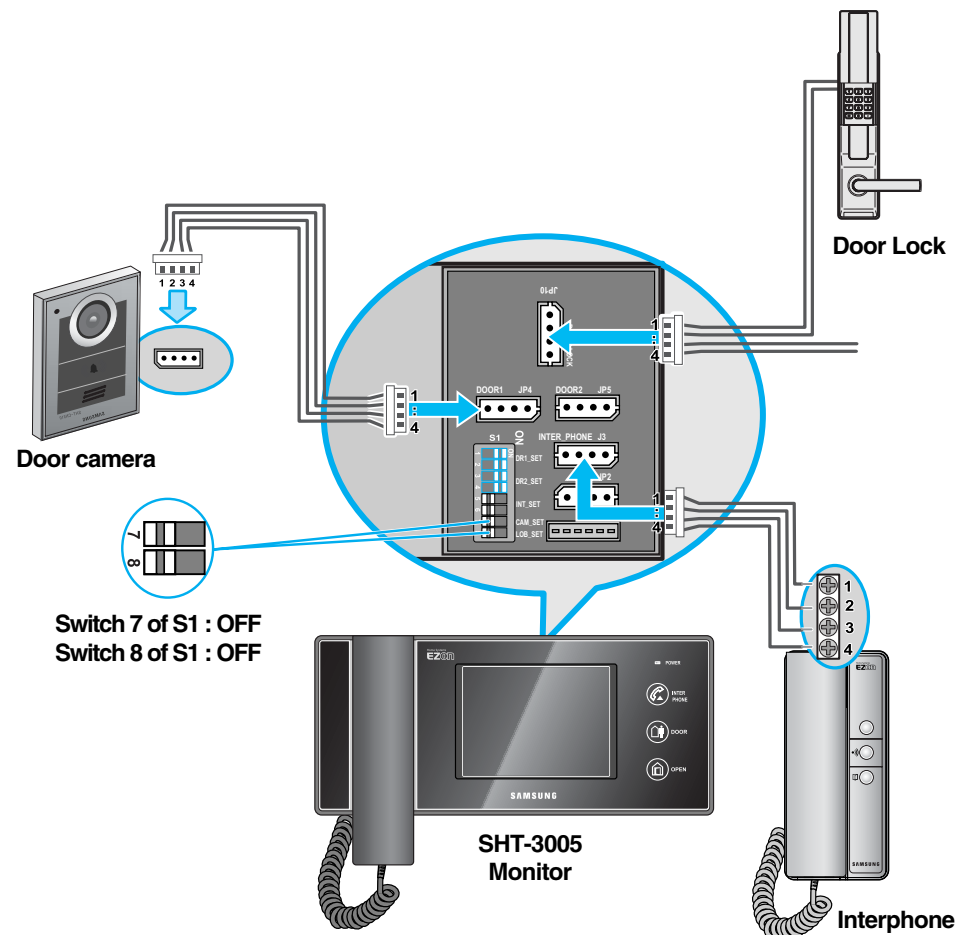
- Switch 7 of S1 should be set to ON when Switch 8 of S1 is set OFF.
- If Switch 8 of S1 is set ON, monitoring function available is only door camera 1.



- When use a multi-lobby phone, It should be connected to JP5 wafer.
- When connect a multi-lobby phone, Switch 8 of S1 should be set to ON.

\* Be sure to establish like below the diagram for safe and precise product connection.

## Monitor + Door camera + Interphone



## Cable Specifications

Monitor and Door phone Connection	
1 [RED]	+ 12 V
2 [GREEN]	VOICE
3 [WHITE]	VIDEO
4 [BLACK]	GND

Monitor and Multi-lobby phone Connection	
1 [RED]	+ 12 V
2 [GREEN]	VOICE
3 [WHITE]	VIDEO
4 [BLACK]	GND

Monitor and Door Lock Connection	
1 [RED]	Door Lock 1
2 [GREEN]	Door Lock 2
3 [WHITE]	
4 [BLACK]	

Monitor and Interphone Connection	
1 [RED]	+ 12 V
2 [GREEN]	VOICE
3 [WHITE]	CALL
4 [BLACK]	GND



**Caution**

- Do not connect to AC power. It may result in electrical shock and/or fire.

## Other Setting

### Number of door camera setting : [Switch 7 of S1]

2 Door camera	<input checked="" type="checkbox"/>	<input type="checkbox"/>	<input type="checkbox"/>
1 Door camera	<input type="checkbox"/>	<input type="checkbox"/>	<input type="checkbox"/>

### Connection of the Multi lobby phone : [Switch 8 of S1]

Used	<input checked="" type="checkbox"/>	<input type="checkbox"/>	<input type="checkbox"/>
Not used	<input type="checkbox"/>	<input type="checkbox"/>	<input type="checkbox"/>

### Chime melody setting : [Switch 1 ~ 6 of S1]

Door1	1. Ding-dong 1	2. Salut d'amour [Elgar]	3. Flower Waltz (Tchaikovsky)	4. Serenade (Hyden)
	SW1: OFF <input type="checkbox"/> SW2: OFF <input type="checkbox"/>	SW1: ON <input checked="" type="checkbox"/> SW2: OFF <input type="checkbox"/>	SW1: OFF <input type="checkbox"/> SW2: ON <input type="checkbox"/>	SW1: ON <input type="checkbox"/> SW2: ON <input type="checkbox"/>
Door2	1. Ding-dong 2	2. Ich liebe Dich(Beethoven)	3. Tambourin (Gossec)	4. Classic
	SW3: OFF <input type="checkbox"/> SW4: OFF <input type="checkbox"/>	SW3: ON <input type="checkbox"/> SW4: OFF <input type="checkbox"/>	SW3: OFF <input type="checkbox"/> SW4: ON <input type="checkbox"/>	SW3: ON <input type="checkbox"/> SW4: ON <input type="checkbox"/>
Inter phone	1. Ding-dong 3	2. Nocturn Op.9 No.2(Chopin)	3. Canon (Pachelbel)	4. Plaisir d'amour
	SW5: OFF <input type="checkbox"/> SW6: OFF <input type="checkbox"/>	SW5: ON <input type="checkbox"/> SW6: OFF <input type="checkbox"/>	SW5: OFF <input type="checkbox"/> SW6: ON <input type="checkbox"/>	SW5: ON <input type="checkbox"/> SW6: ON <input type="checkbox"/>

[Configuration of S1]

S1 ON

1 2 3 4 5 6 7 8

DR1\_SET

DR2\_SET

INT\_SET

CAM\_SET

LOB\_SET



**Caution**

- Make sure to turn power off after changing the settings.

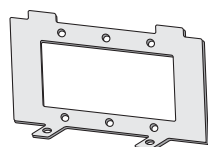
# Components

The following are the SHT-3005 components.  
First confirm that all components shown below have been included.

## Monitor



Monitor(SHT-3005)  
1EA



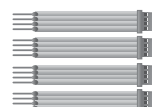
Mount Bracket  
1EA



User Manual  
1EA



Mount Bracket Screw  
4EA  
(Added : Monitor fixing  
screw 2EA)



EXT Harness  
4EA  
INTER PHONE : 1EA  
DOOR PHONE : 2EA  
DOOR LOCK : 1EA

## Door Camera (Optional)

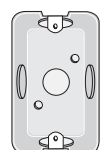
### ◆ SHT-CN510/EN (Optional : only for SHT-3005WA/EN model)



Door Camera  
1EA



Mount Bracket  
1EA



SW Box  
1EA



Mount Bracket Screw  
2EA

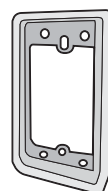


Wrench  
1EA

### ◆ SHT-CP610/EN (Optional : only for SHT-3005WB/EN model)



Door Camera  
1EA



Mount Bracket  
1EA



Mount Bracket Screw/Cover  
2EA + 2EA/2EA



Wrench  
1EA

# Troubleshooting

## Check This First!

### The power does not turn on.

- Make sure if the power is connected.

### The screen is to dark.

- Check the condition of the exterior lighting in the area of the camera.
- Clean the exterior surface of the door camera.
- Adjust the screen brightness in the function settings. (refer to page 10)  
The screen brightness settings consist of 4 phases and factory default set is 2.

### There is to much noise during calls.

- Check to see if the door phone line has been short-circuited with the ground.

### Calls are not audible.

- Check the volume setting.
- Check the wire connection between the monitor and the camera.

## Monitor

Device	Category	Specifications
SMPS	Input Power	AC 100 V ~ 240 V $\pm$ 10 %, 50 Hz / 60 Hz
	Max. Power Consumption	11 W
	DC Output Voltage/Current	12 V / 850 mA, 5 V / 100 mA
	Weight	70 g

Device	Category	Specifications
SHT-3005	Communication Mode	Handset Communication
	Monitor Screen Size	5 inch (5-Type LCD monitor)
	LCD Resolution (dot)	5 inch 320 (H) x 234 (V)
	LCD Screen Visible Angles	5 inch Horizontal : $\pm$ 50°, Vertical : +35° / -11°
	LCD Back-light	5 inch CCFL Back-light Type
	LCD Back-light Life Cycle	5 inch 50,000 Hours $\pm$ 25
	Video Scan Type	PAL (Composite)
	Video Signal Wire Connection	Two-Wire Connection
	Camera Transmission Distance	Diameter : 0.65 mm/Optimal Distance: 30 mm or less
	Chime Melody	Refer to page 17
	Main Unit Electricity Consumption	Max. 1 A
	Weight	1.2 Kg
	Dimension	275 mm(W) x 125 mm(H) x 40 mm(D)

## Door Camera

### ◆ SHT-CN510/EN

Device	Category	Specifications
Door Camera	Input Power	DC 12 V (Receive power from a monitor)
	Video Scan type	PAL
	Dimension	92 mm(W) x 136 mm(H) x 12 mm(D)
	Weight	150 g

### ◆ SHT-CP610/EN

Device	Category	Specifications
Door Camera	Input Power	DC 12 V (Receive power from a monitor)
	Video Scan type	PAL
	Dimension	97 mm(W) x 130 mm(H) x 23 mm(D)
	Weight	350 g

## Product Warranty

Seoul Commtech Products are supplied with one(1) year warranty base from the date of purchase, we'll repair or replace the defective product with a new or factory rebuilt replacement.

### Subject of Warranty

1. This warranty applies to the original purchase only.
2. All warranty will be invalid if unauthorized repair or modifications are made to the unit or in any case of accident, misuse, damage caused by improper installation and altered serial numbers.
3. If you need a warranty service, you should send the product to customer Dep't or dealer office, the product in all cases must be accompanied by the following items; Customer name, address, telephone number, the serial numbers, copy of customer sales receipt showing the purchase date and place

The Model number is on the box and front of the manual. The serial number is on the unit. Record the Model and serial numbers in the spaces provided below. Refer to these numbers for warranty service.

Model No.

Serial No.