


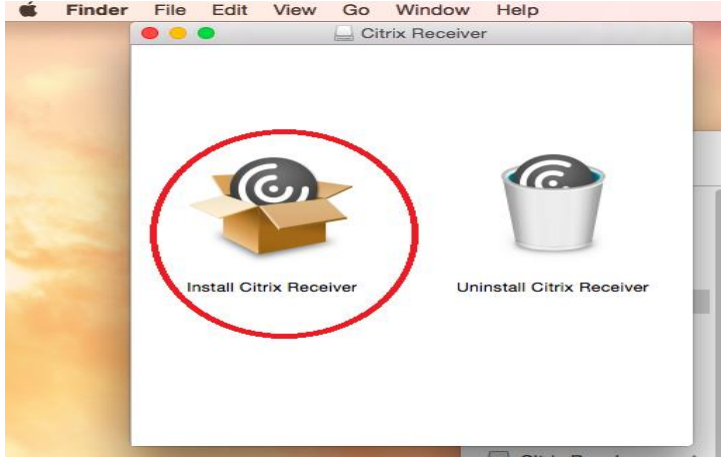
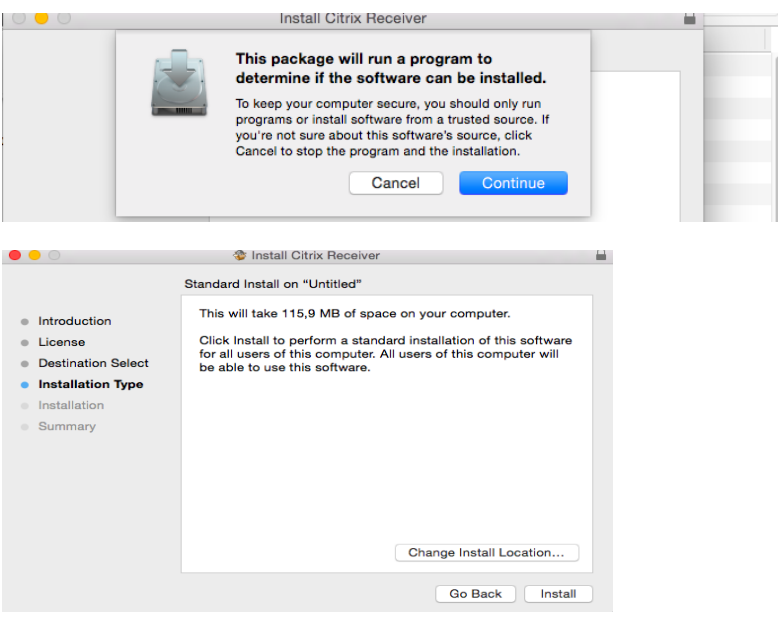


# User manual

## Myworkplace for Apple OSX

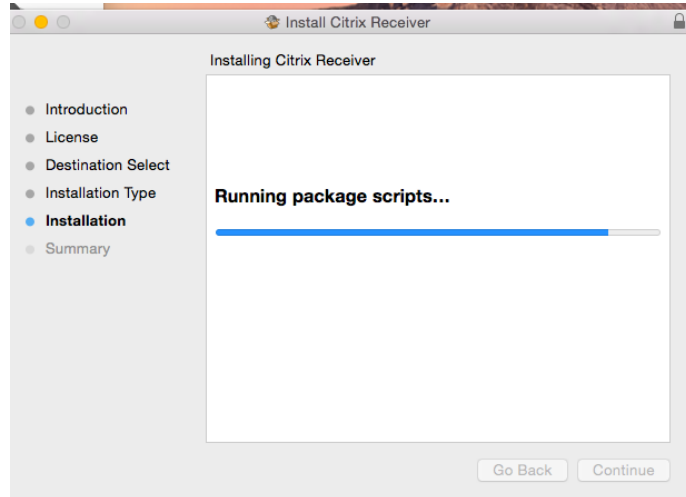
This manual describes downloading and installing the Citrix Receiver and logging in to Myworkplace.uu.nl for Apple Macbook Air/Pro or iMac OSX computers.

Provided: ITS  
Version: 2015-11-06

What should you do?	Screenshot
<p>Step 1</p> <p>Navigate to  <a href="http://www.citrix.com/go/receiver.html">http://www.citrix.com/go/receiver.html</a></p> <p>Click "Download Receiver for Mac".</p>	
<p>Step 2</p> <p>Click "Install Citrix Receiver".</p>	
<p>Step 3</p> <p>Click "Continue".</p> <p>Follow the steps and click "Install".</p> <p>When asked, provide the username and password of your local administrator account.</p>	

## Step 4

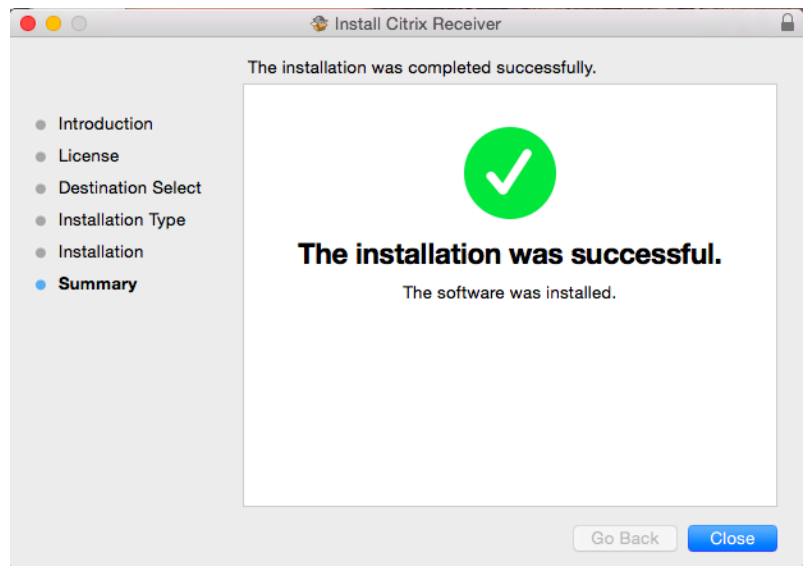
Citrix Receiver is now being installed.



## Step 5

The installation of the Citrix Receiver has been completed.

Click "Close".



## Step 6

Open a browser (in this example Safari)

In the adress bar type :  
www.myworkplace.uu.nl.

Log in with you email adress  
initials+lastname@students.uu.nl and your  
Solis-ID password.



**Note:**

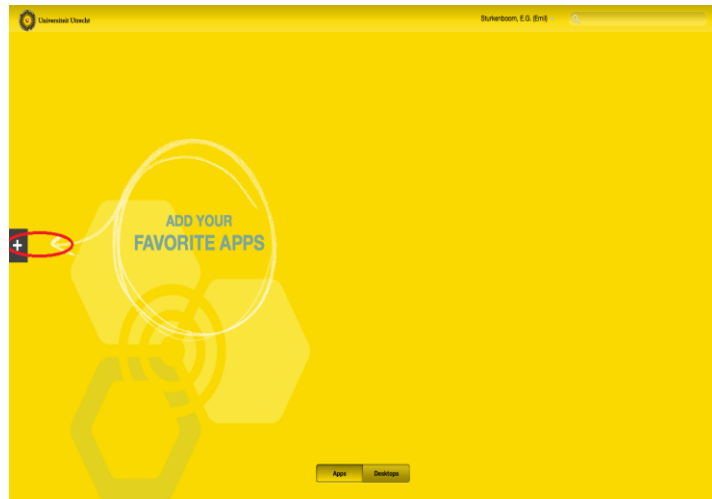
Because Myworkplace.uu.nl is using the Citrix-receiver you can encounter some pop-ups in the process.

**Step 7**

You are now logged on to Myworkplace.

Click the + sign.

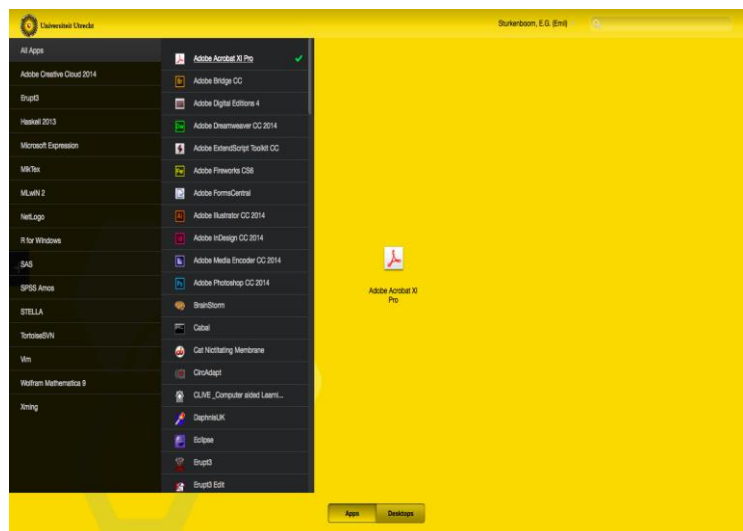
You should now see the study software (Apps) you have access to.

**Step 8**

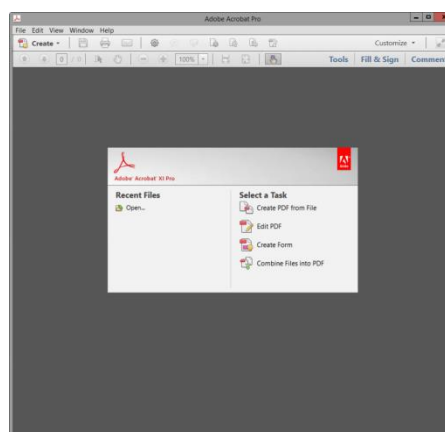
Click the + sign next to an App (a green tick will appear).

An icon will now appear on the green screen.

Click on the icon or app to start the software (in this example Adobe Acrobat)



Adobe Acrobat Pro is now ready for use.



## Step 9

Logging off of Myworkplace

Click your name to log off.

