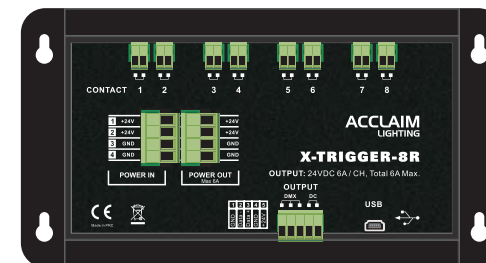


ACCLAIM LIGHTING

X-Trigger-8R



USB cable

User Instructions

ACCLAIM
LIGHTING

All Rights Reserved! Improvements and specifications in the design of this unit and this manual are subject to change without any prior written notice.

Table of Contents

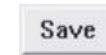
X-Trigger-8R Page1~Page3

AR32 Configuration Software Operating Guide
Page6~Page12

In this option, user can activate Time Trigger Mode for desired SHOW by editing show events to AR-32C, including Calendar Mode and Weekly Mode. Commonly, the Calendar Mode will take precedence of the Weekly Mode.

For example,

If you have set up two events(A1 and A2) within one day, and A1 in the Calendar Mode, A2 in the Weekly Mode. Only A1 in the Calendar Mode will be performed, however A2 will be void.



Click the "Save" icon to confirm and save your current settings in memory for the selected show.



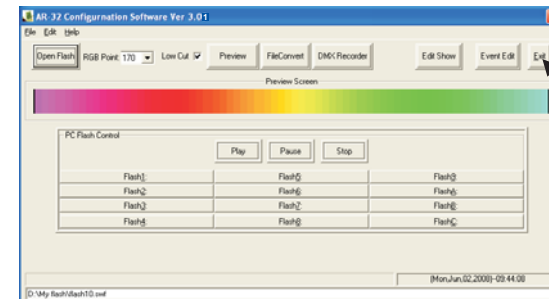
Click the "DEL" icon to delete your current setting if you're not satisfied.



Click the "DownLoad To AR32" icon to download those shows which events have been edited well to your AR-32.

Exiting the AR-32 Configuration Software

Click the "Exit" icon at the top-right corner of the Tool Bar to exit the AR-32 Configuration Software.



Special Note:

Up to 32 shows allow to be programmed through operating AR-32 configuration software, but the user can only trigger Show1~Show8 by switching on/off external 8 dry contacts(Contact1~Contact8). When any of Contact1~Contact8 disables, Show 32 is running automatically and others shows disable whatever you do.

About X-Trigger-8R

Introduction:

Thanks for purchasing our product, X-Trigger-8R is a newest DMX recorder, features 8 built-in shows by switching on/off 8 external dry contacts. And the fixed built-in 128M memory chip allows to represent 128 scene files. The user can program 128 scene files and edit 8 shows, then conveniently record into X-Trigger-8R through operating AR-32 configuration software on the PC platform. Easy to play and plug. Please simply connect the USB-cable between your X-Trigger-8R and your computer to configure the unit by operating AR-32 Configuration software, then you're ready to go!

Unpacking:

The X-Trigger-8R has been thoroughly tested and shipped in perfect working condition. Please take a few minutes to carefully inspect the system carton for damage that may have occurred during shipping. If the carton appears to be damaged, carefully inspect each system component for damage, in the case that damage is found, please contact our customer support center, listed below, for further instructions. The X-Trigger-8R system carton should includes the following:

- 1 X-Trigger-8R
- 1 USB-cable
- 1 User's Manual
- 1 AR-32 Configuration Software

Customer Support:

Every effort has been made to design dependable and reliable products. New products are constantly being designed to meet the needs of the entertainment lighting industry. Your comments regarding our products and services are welcome. ACCLAIM LIGHTING will provide set up help and to answer any question should you encounter problems during you set up or initial operation. You may also visit us on the web at www.acclaimlighting.com for any comments or suggestions. And please send us an e-mail to info@acclaimlighting.com and let us know how to improve to better serve you. It is both a privilege and pleasure serving you.







Caution!

There are no user serviceable parts inside this unit. Do not attempt any repairs yourself, doing so will void your manufactures warranty. In the unlikely event your unit may require service, please contact your nearest Acclaim lighting dealer.

Do not discard this carton in the trash, please recycle when ever possible.

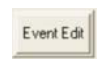
Upon unpacking, carefully inspect your unit for any damage that any have occurred during shipping. If damage may have occurred, do not plug the unit in, please contact your dealer as soon as possible.



-  Click the "DEL Scene File" icon to delete the undesired scene flash files.
-  Click the "Format Device" icon to format your AR-32 system and clear up all scene flash files.
-  Click the ">" icon to add a highlighted component (Scene flash) from the source components list into the destination components list in sequence for your desired Show.
-  Click the "Insert" icon to insert an additional component (scene flash) between two highlighted destination components.
-  Click the "<" icon to cancel a highlighted component (Scene flash) from the destination components list
-  Click the "DownLoad to Keypad" icon download the selected and edited show to AR-32C (keypad). Repeat above steps to edit more shows and download them to the Keypad.

5.Events Edit

In this function, built-in real-time clock and calendar allows to edit events and set triggering time for each SHOW. Calendar Mode and Weekly Mode are available.

-  Click the "Event Edit" icon, a new dialog box(screen) will appear, indicating you to edit its events in a selected show. And the Calendar and Weekly triggering modes are available. You can set its Event Start time and its Event Stop time individually in different triggering modes. See figure-5.

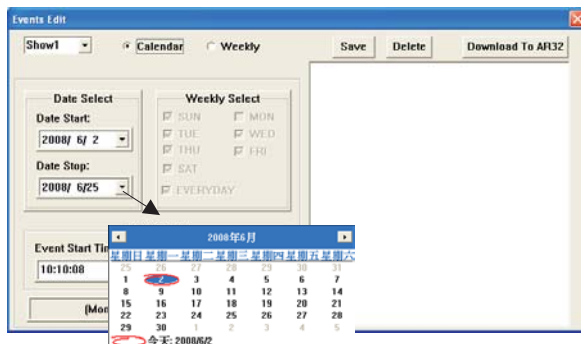


Figure 5

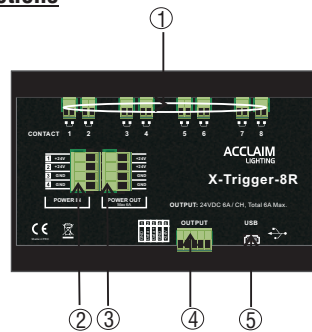
Main Features

- Record function available
- It features 8 dry contacts to trigger 8 built-in Shows
- USB Port to communicate with PC
- 128M memory represent 128 scene files
- Scene DMX files format and Show editing can match with AR-32 configuration software.
- Allows up to 8 programmable Shows by AR-32 configuration software.
- Built-in 24V/6.5A switching power supply unit
- Output voltage 24VDC, maximum 6A with DMX signal

Technical Specification:

Power Requirement	DC24V
Input	4-pin terminal socket(DC Power) 2-pin terminal socket(contact ports)
Output	4-pin terminal socket(power through) 5-pin terminal socket, max 6A of 24VDC
Housing	PolyCaronate
Ingress Protection Rating	IP 20
Connection	Terminal
Listing	CE certificated
Operation Temperature	-10deg c to +50 degC
Storage Temperature	-20 degC TO +70 degC
Dimension	195(L)X100(W)X25(H)mm
Weight	200g

Controls & Functions



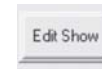
- ① **Contacts 1~8** : To trigger the relative Show(Show1~Show8) which you desired.
- ② **Power In** : DC24V power input
- ③ **Power Out** : To feed DC24V, 6A max. Of power supply to the next unit
- ④ **Output** : To feed DMX signal and DC24V power supply
- ⑤ **USB Port** : To communicate with PC through this port

*NOTE:

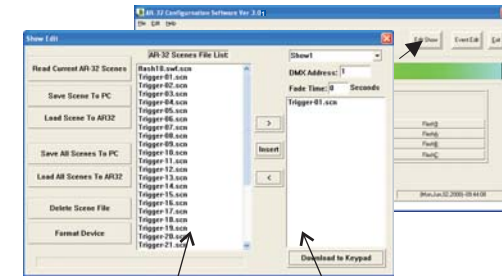
Please make sure all DMX Setups are connected properly and correctly before DMX recording. If or not, DMX record would fail and the warning hint with "NO DMX Input" will show on the screen.

4. Edit Show

In the function, allows up to 32 Shows can be created and assigned by customizing flash scenes with DMX address setting and fadetime selection.



Click the "Edit Show" icon, a new dialog box(screen) will appear, indicating you to edit some scene flashes, set their separate DMX addresses and fade times. Before editing a show, please firstly select the desired show, set its DMX address and fade time. See figure-4.



AR-32 Scene File List

Destination components list for your desired SHOW

Figure-4

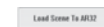
User can set up DMX initial address for show triggering and Fade Time in the blank bar. (For further information, please refer to AR-32C accompanying manual.)



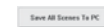
Click the "Read Current AR-32 Scenes" icon to look through the list of AR-32 current Scene flash files.



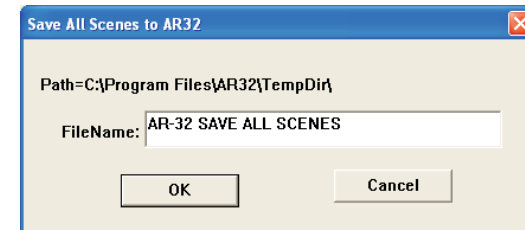
Click the "Save Scene To PC" icon to save pointed individual scene flash file in your PC.



Click the "Load Scene To Ar32" icon to load pointed scene flash file to your AR-32. And loading desired scenes flash file will be listed in AR Scene File List.

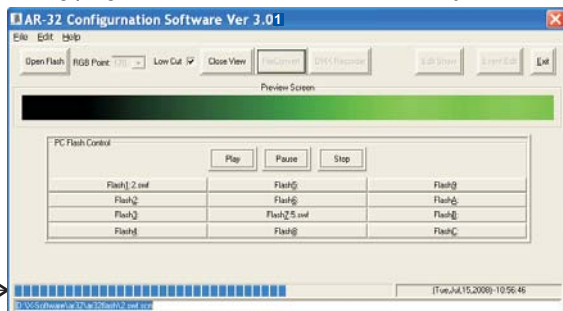


Click the "Save All Scenes To PC" icon to save all scenes flash files in destination path in your PC. And a new dialog box(screen) will appear, press "OK" icon to confirm and save.



Click the "Load All Scenes To AR32" icon to load all scenes flash files in destination path in your PC to your AR-32. And a new dialog box(screen) will appear, select your desired, then press "OK" icon to confirm and save.

When the above dialog box appears, you can input flash playing speed (Flash Frame), then click the "OK" icon to confirm its value and the current playing flash with extension.swf will be converted into file with extension.scn. The converting progress rate will show on the screen for you.



Converting Progress Rate →

4. DMX Record

In this function, allows to record external DMX signal from DMX generator or controller as a new scene for application.



Click the "DMX Record" icon, the new dialog box(screen) will appear, indicating you to record external DMX signal from DMX controller to your AR-32 system as a scene (DMX signal converting to file with extension.scn). See figure-3.

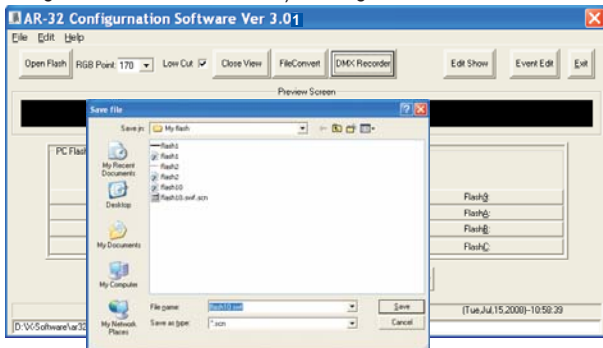
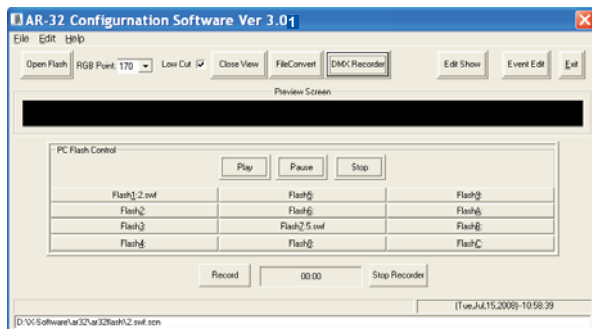


Figure-3

Click the "Record" icon to start DMX recording, and DMX recording is valid until pressing the "Stop Record" to stop DMX recording. And the screen will show the DMX record time for you. And at this time, other functions disable.



AR-32 Configuration Software Operating Guide

USB Drive Program & AR-32 Configuration Program Installation

USB Drive Program Installation

If you first use the system, you must install the USB Driver and AR-32 Configuration Software program as the simply following these steps;

1. Before installing USB Drive program, please ensure all tension and USB cable connections are connected properly.
2. Download the main program folder, copy and save them in the pointed path of your computer which you wish.
3. Connect your X-Trigger-8R to your computer with USB cable via USB port.
4. Power the X-Trigger-8R on.
5. And a promote screen will indicate you to install USB Driver program by following the installation process till it has been completed.

NOTE: You must select "Driver" directory in the main folder to install.

AR-32 Configuration Program Installation

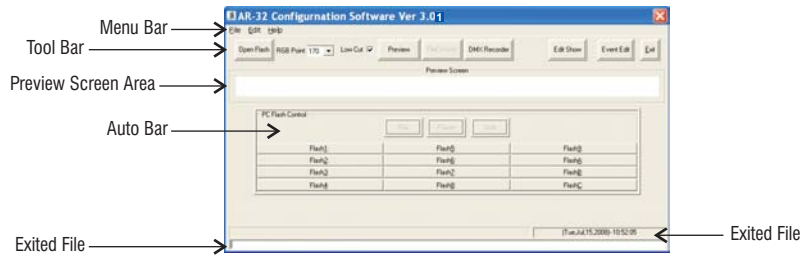
Open the main folder file, and select AR-32 program, then simple double-click on the "SETUPEXE" file, follow the installation process to install till it has been completed.

How to uninstall USB Drive program and AR-32 Configuration software

USB Drive program and AR-32 Configuration software can be uninstalled via "Add or Remove Programs" utility found in the Control Panel.

Getting started AR-32 Configuration Software(Ver3.01)

In Windows, click the Start icon and go to the "Programs" then "AR-32". Move the pointer to the AR-32 icon and click it. After a few seconds, the AR-32 screen appears.



Using the Menu Bar

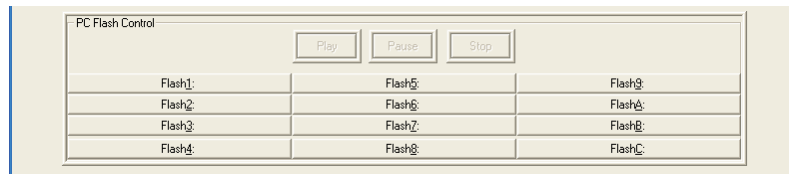
In Menu Bar, there are File, Edit and Help options.

Two submenus including File Convert, DMX Record are in the File option;

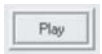
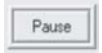
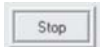
Two submenus including Show Edit and Event Edit are in the Edit option;

Two submenus including AR32_Help and About AR-32 are in the Help option.

Using the Auto Bar




The Auto Bar is a quick and rapid way to choose many of the most useful commands and shortcut keys for PC Flash Control, features Play, Pause and Stop. To choose a desired command, only simply click its shortcut key in Auto Bar area you want.

-  To start your selected flash
-  To pause temporarily running flash
-  To close running flash

Using the Tool Bar



1. Open flash

-  To open the currently selected flash file, a new dialog box(screen) will appear, indicating you to select your desired flash files in a flash file selection, then move the pointer to the "open" icon to open. See figure-1.

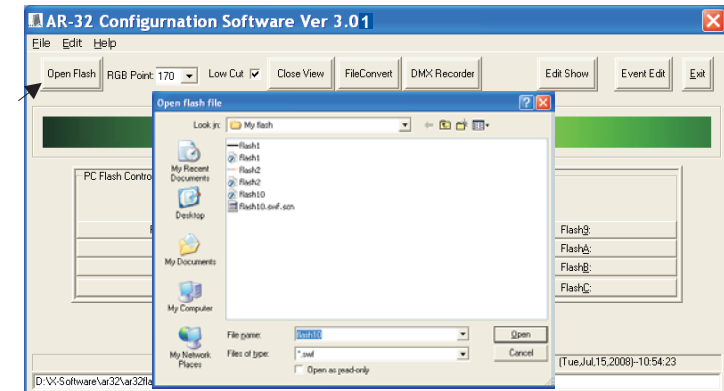


Figure-1



To key a valid number(1~170) as your selected RGB LED lighting points.

2. Preview

In this function, a temporary flash scene is available by directly playing current flash .And it allows to learn about the flash effect showing on the LED fixtures before recording. Click the "Preview" icon to preview the current flash and the second tapping this icon to close.

3. File Convert

Due to only flash files with extension.scn can be accepted and downloaded to AR-32 system, so some flash files which are with extension.swf must be primarily converted into ones with extension.scn.



Click the "FileConvert" icon, a new dialog box(screen) will appear, indicating you to set flash frames. The flash frame can be set up at the range of 1~35 frames/S. See figure-2.

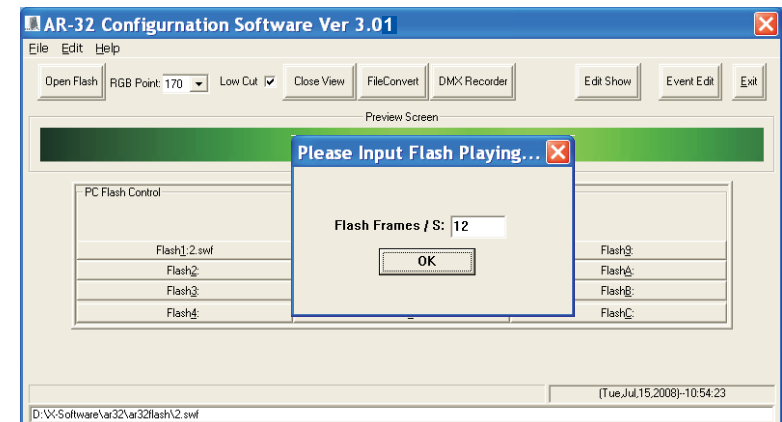


Figure-2