



DTVaultLock User's Manual

DTVaultLock is a DataTraveler® Vault tool that enables you to create and access a user defined password-protected area called a Privacy Zone, on your DataTraveler Vault drive.

This document will help you get started with DTVaultLock, and it includes some important frequently asked questions (FAQs). For the latest FAQs, visit the DataTraveler Website at www.kingston.com/support.

TABLE OF CONTENTS

1	System	3
1.1	Requirements	3
1.2	Recommendations	3
2	Getting Started	4
2.1	Creating the Privacy Zone	4
2.2	Using your Privacy Zone	7
2.3	Logging Out of Your Privacy Zone	9
2.4	The Trust Option	10
3	Customizing Your Settings	11
3.1	Desktop	11
3.2	Changing Your Password.....	12
3.2.1	With the Change Password Button.....	12
3.2.2	Lost Password	13
3.3	Changing the Size of the Privacy Zone	13
4	Troubleshooting.....	14
4.1	Preventing Data Loss	14
4.2	Open Connection Error	14
5	FAQs.....	15

1 SYSTEM

1.1 Requirements

- Pentium II 266MHz Processor
- 2MB free disk space
- Operating Systems: Windows[®] 7, Windows Vista (SP1, SP2), Windows XP (SP1, SP2, SP3) and Windows 2000 (SP4)
- USB Port 2.0/1.1

1.2 Recommendations

- Graphic accelerator that supports 24-bit color depth for best-quality graphics
- 96 DPI video setting
- Disable Windows ReadyBoost[™] on DataTraveler Vault*

* Although your DataTraveler[®] Vault is enhanced for ReadyBoost, DTVaultLock will not operate properly if ReadyBoost cache is enabled on the drive. However, you may enable ReadyBoost cache on a separate drive.

2 GETTING STARTED

CAUTION! When you create your Privacy Zone, the DataTraveler® Vault will be formatted and ALL data will be lost. Backup your files before creating your Privacy Zone.

2.1 Creating the Privacy Zone

1. Select the removable disk drive letter assigned to your DataTraveler® Vault via Computer (or My Computer) and double-click DTVaultLock.
2. Select your preferred language in the DTVaultLock Language Selector window (Figure 1) using the dropdown list and click **OK**.



Figure 1: Language Selection Window

3. Click **OK** to continue after you have read the DTVaultLock Welcome window (Figure 2).

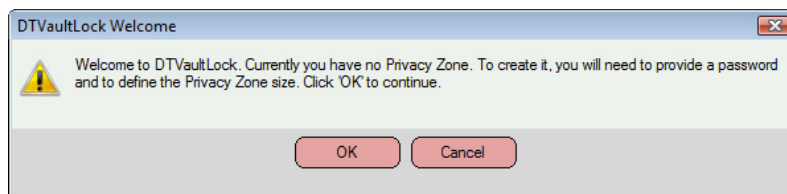


Figure 2: Welcome Message

4. When the DTVaultLock window appears, move the DataTraveler® Vault slide bar up or down to designate the size of your new Privacy Zone (Figure 3).

Note: The Privacy Zone maximum size is limited. 10% of the total capacity of your DataTraveler® Vault is kept free to store the DTVaultLock application, future upgrades, and future applications without hindering operation.

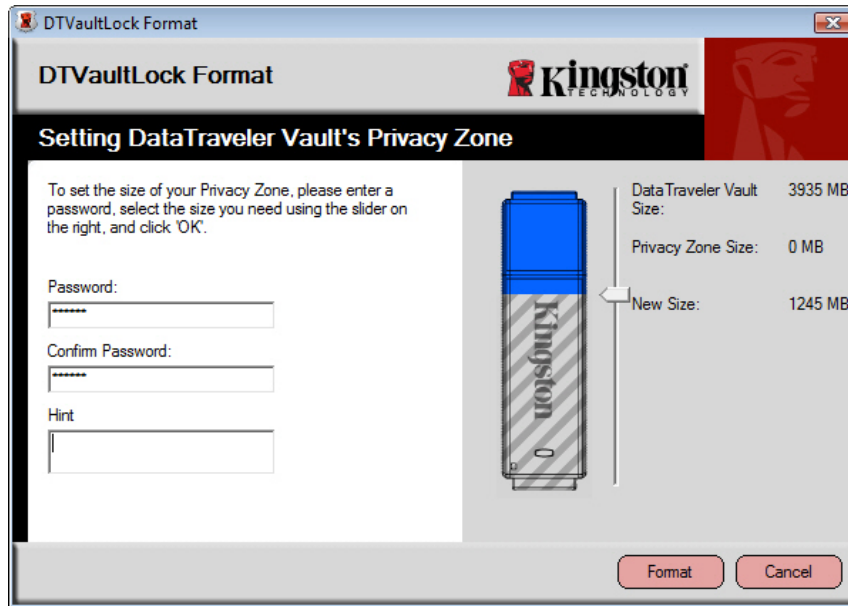


Figure 3: DTVaultLock Format Window

5. Enter the following information into the relevant fields:
 - a. Your password (required)
 - b. The same password to confirm (required)
 - c. A hint to remind you of your password (optional)
6. When you have completed steps 4 and 5, click **Format**.
7. The DTVaultLock Format Warning window is displayed (Figure 4). To proceed with the format operation, click **OK**.

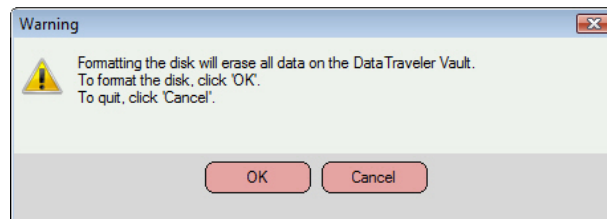


Figure 4: DTVaultLock Format Warning Window

8. A formatting progress bar is displayed (Figure 5) while DataTraveler[®] Vault is formatted.

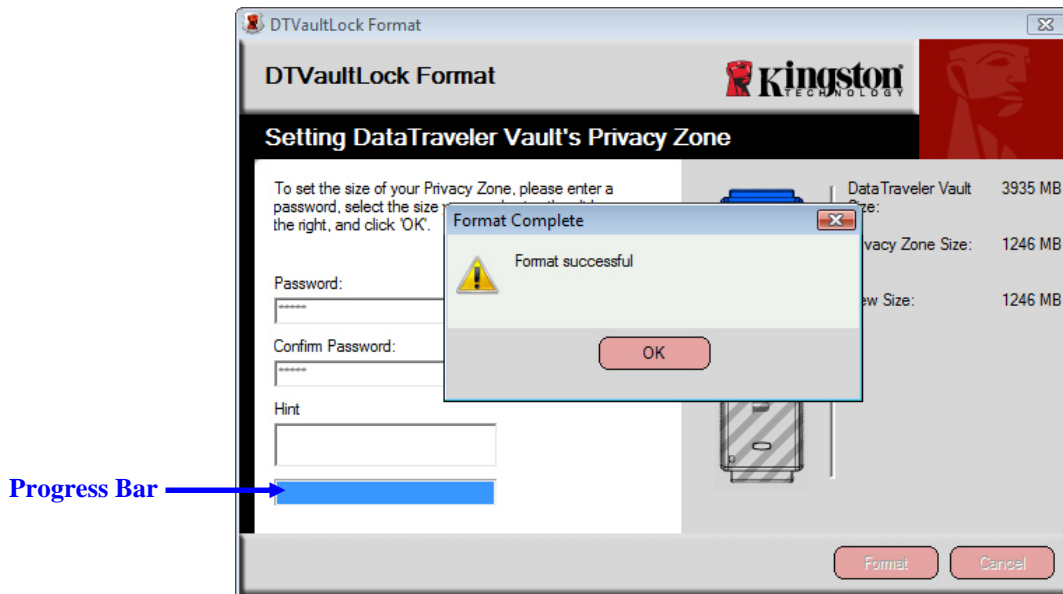


Figure 5: Progress Bar

After the format is complete, a Format successful message will display (Figure 5). Click **OK** to continue. You can now login to your DataTraveler[®] Vault Privacy Zone.

2.2 Using your Privacy Zone

1. After you have created a Privacy Zone, DTVaultLock automatically prompts you to login (Figure 6). Alternatively, you can select the removable drive letter (i.e. E:) assigned to your DataTraveler® Vault and double-click the DTVaultLock icon.

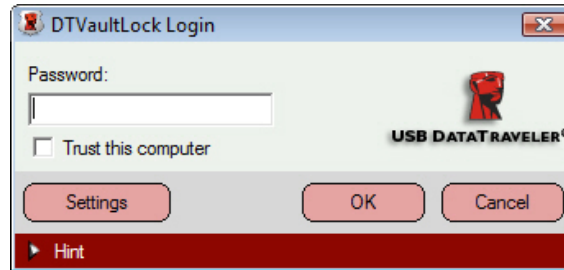


Figure 6: Login Screen

2. To login to your Privacy Zone, type in your password and click **OK**. If you enter the incorrect password, an error message is displayed as shown in (Figure 7).

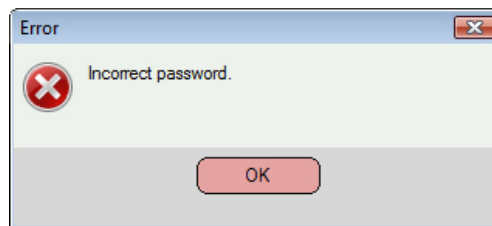


Figure 7: DTVaultLock Error Message

DTVaultLock automatically blocks all access to your data in the Privacy Zone after a predefined number of invalid password verification attempts. DTVaultLock allows up to **10** password verification attempts. If your Privacy Zone becomes blocked for further access, follow the directions provided in the dialog boxes to reformat your Privacy Zone.

If you forget your password, click **Hint** to display the Hint field in the DTVaultLock Login window (Figure 8).

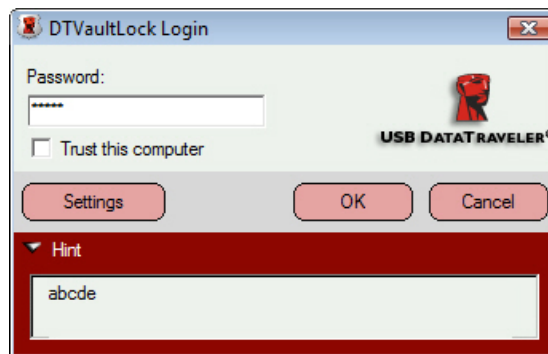


Figure 8: Password Hint

3. After a successful login, DTVaultLock will display a confirmation message (Figure 9). Click **OK** to enter the Privacy Zone.

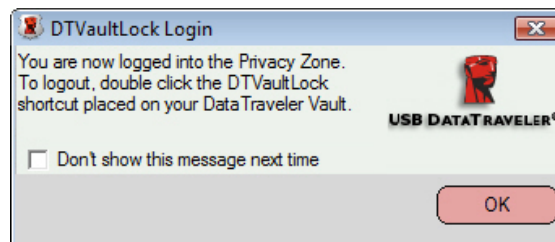


Figure 9: Successful Login

All data stored on the DataTraveler[®] Vault will be password protected once you logout of the Privacy Zone.

2.3 Logging Out of Your Privacy Zone

1. Save and close all files that you have accessed on your DataTraveler[®] Vault.
2. To logout of the Privacy Zone, select the removable disk drive letter (i.e. E:) assigned to your DataTraveler[®] Vault, and double-click **Logout DTVaultLock** (Figure 10).

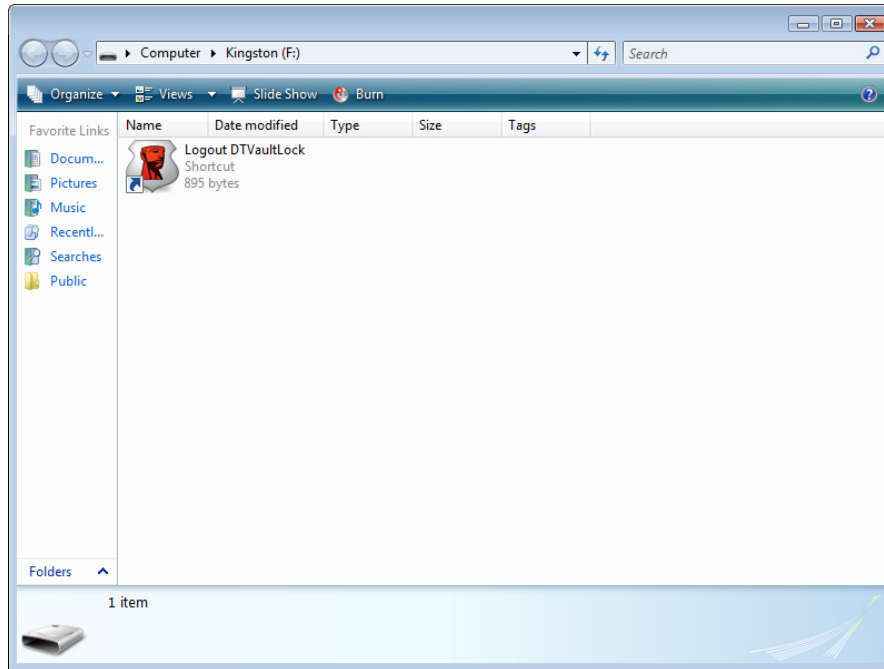


Figure 10: Privacy Zone View

3. The DTVaultLock Logout confirmation is displayed below (Figure 11). Click **OK** to logout of the Privacy Zone.

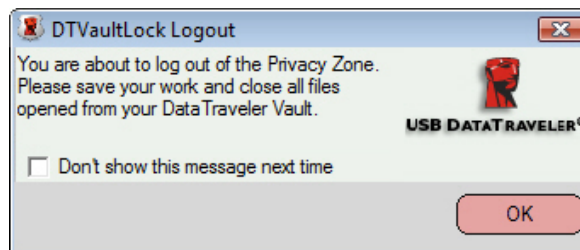


Figure 11: Logout Confirmation Window

2.4 The Trust Option

When data is protected with the Trust option, you can designate specific computers (for example, your personal workstation or home computer) as trusted computers, eliminating the need to enter a password each time you plug in your DataTraveler® Vault. This is particularly convenient, for example, if you use your DataTraveler® Vault frequently at a specific workstation or if you back up your DataTraveler® Vault on your computer on a regular basis.

1. To designate a workstation as a trusted computer, select the **Trust this computer** checkbox in the DTVaultLock Login window and login with your password (Figure 12).

When the Trust option is enabled, the DTVaultLock Login window is displayed each time you insert your DataTraveler® Vault, but there is no need to enter your password.

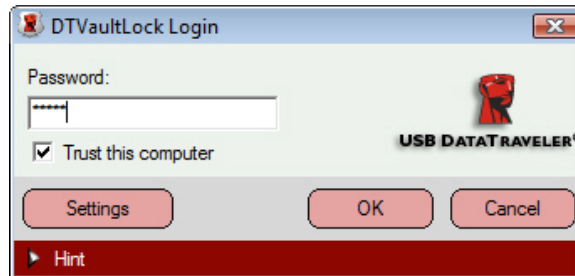


Figure 12: Implementing the Trust Option

2. To disable the Trust option, clear the **Trust this computer** checkbox in the DTVaultLock Login window. A warning message is displayed (Figure 13).

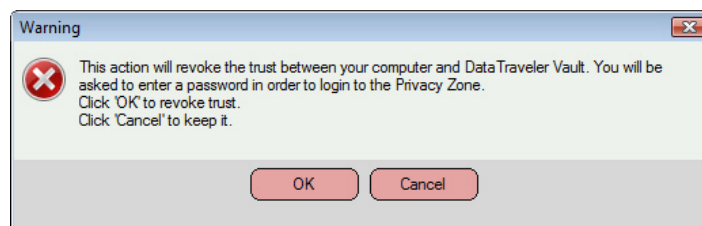


Figure 13: Revoke Trust Warning

3. Click **OK** to return to the DTVaultLock Login window where you can access the Privacy Zone using your password, or reactivate the Trust option.

3 CUSTOMIZING YOUR SETTINGS

3.1 Desktop

1. To customize DTVaultLock for your desktop, click **Settings** in the DTVaultLock Login window (Figure 12).
2. Select the following options to configure your DTVaultLock Settings (Figure 14):
 - No login confirmation
 - No logout confirmation
 - No welcome window on startup
 - Language selection

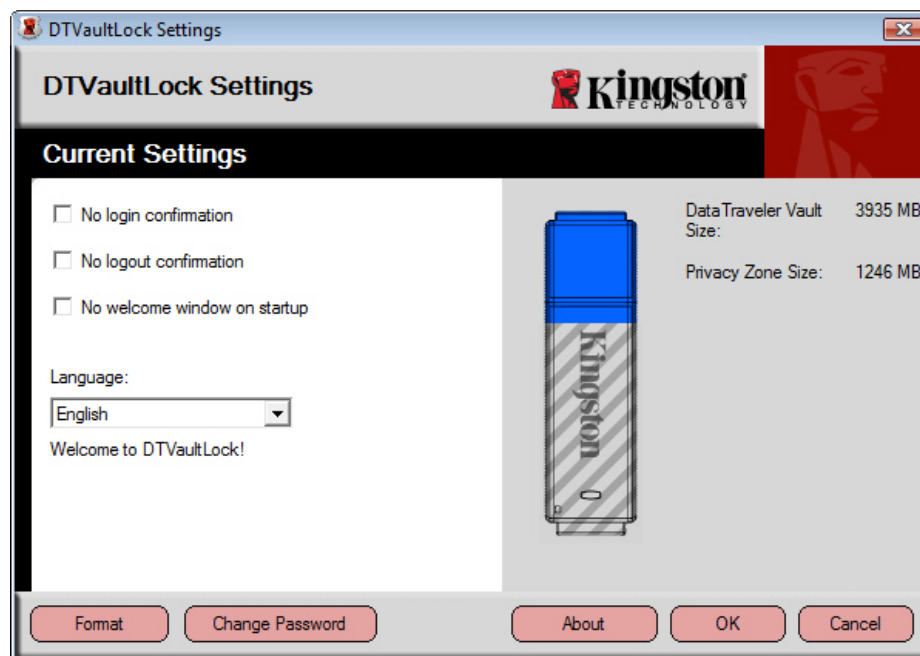


Figure 14: DTVaultLock Settings Window

3. Click **OK** to activate the options selected.

3.2 Changing Your Password

3.2.1 With the Change Password Button

To change your password using the Change Password button:

1. Click **Change Password** in the DTVaultLock Settings window (Figure 14).
2. When the Change Password dialog box (Figure 15) is displayed, type in the current (old) password, the new password, and the new password once again for confirmation. It is recommended to use a hint in case you forget or lose your password.



Figure 15: Change Password Dialog Box

3. Click **OK**. A confirmation message is displayed (Figure 16).

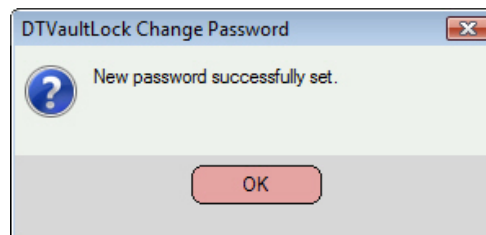


Figure 16: New Password Confirmation Message

3.2.2 Lost Password

If you lose your password, you can change the password by formatting the Privacy Zone as described in Section 2.1, step 4-5.

CAUTION! DataTraveler[®] Vault will be formatted and ALL data will be lost.

3.3 Changing the Size of the Privacy Zone

CAUTION! Changing the size of your Privacy Zone requires formatting your DataTraveler[®] Vault, causing ALL secured and non-secured data to be lost.

To change the size of the Privacy Zone:

1. Click **Format** in the DTVaultLock Settings window. The DTVaultLock Format window is displayed, as shown in (Figure 3 of page 5).
2. Enter the new password and confirm it by entering it a second time.
3. Enter a hint in case you forget your password.
4. Set the new size of your Privacy Zone using the slide bar and click **Format**.
5. The DTVaultLock Format Warning window is displayed, as shown in (Figure 4 on page 5).
6. Click **OK** to reformat your DataTraveler[®] Vault and create a new Privacy Zone.

To remove the Privacy Zone:

1. Click **Format** in the DTVaultLock Settings window. The DTVaultLock Format window is displayed, as shown in (Figure 3 of page 5).
2. Set the size of your Privacy Zone to 0% using the slide bar.
3. Click **Format**. A message is displayed (Figure 17) warning you that your DataTraveler[®] Vault will not have a Privacy Zone.



Figure 17: Removing the Privacy Zone

4. Click **OK**. The DTVaultLock Format Warning window is displayed, as shown in (Figure 4 of page 5).
5. Click **OK** to reformat your DataTraveler[®] Vault and create a new Privacy Zone.

4 TROUBLESHOOTING

4.1 Preventing Data Loss

Close all files and applications **on the drive** prior to DTVaultLock login/logout or system shut down. If you attempt any of these tasks prior to saving your data, file modifications may be lost.

4.2 Open Connection Error

If an open connection error message is displayed (Figure 18) click **OK** and...

- a. Close open files and/or applications on the DataTraveler[®] Vault and retry login, logoff, system restart or shut down.
- b. If you're using Windows Vista or Windows 7, make sure ReadyBoost[™] cache is not enabled on the DataTraveler[®] Vault drive. After disabling ReadyBoost, reinsert the drive and try again.

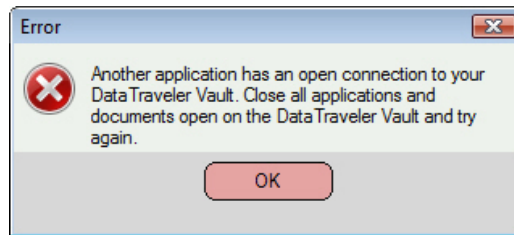


Figure 18: Open connection error message

5 FAQs

To see the latest FAQs, go to the DataTraveler® website at www.kingston.com/support . Several FAQs are listed below for quick view.

- Q:** I inserted the DataTraveler Vault drive into a Windows Vista and/or Windows 7 computer and an AutoPlay dialog appears with an option to “Speed up my system using Windows ReadyBoost.” What is this feature?
- A:** ReadyBoost is a feature of Windows Vista and Windows 7 which has the ability to utilize USB flash drive storage space to improve system performance. Unfortunately, DataTraveler Vault does not support ReadyBoost.
- Q:** How do I know if I am working in the Privacy Zone?
- A:** If you are working in the Privacy Zone, all file/ folder names located on the root will be highlighted with an orange background. (This visual indication may not be experienced if you have selected Windows classic folders or if you are using Microsoft Vista™).
- Q:** I accidentally deleted DTVaultLock from my DataTraveler® Vault. How can I access data in my Privacy Zone?
- A:** Download the latest copy of DTVaultLock via the Web at www.kingston.com/support to your DataTraveler® Vault. The Privacy Zone previously created will now be accessible.
- Q:** Can I use more than one DataTraveler® Vault with DTVaultLock simultaneously?
- A:** Yes.