

EUDORATM
Version 6.1

**Eudora Email 6.1
New Features Manual
for Windows**

This manual was written for use with the Eudora® for Windows software version 6.1. This manual and the Eudora software described in it are copyrighted, with all rights reserved. This manual and the Eudora software may not be copied, except as otherwise provided in your software license or as expressly permitted in writing by QUALCOMM Incorporated.

Copyright © 2004 by QUALCOMM Incorporated. All rights reserved.

QUALCOMM, Eudora, Eudora Pro, Eudora Light, and QChat are registered trademarks of QUALCOMM Incorporated.

PureVoice, SmartRate, MoodWatch, WorldMail, Eudora Internet Mail Server, and the Eudora logo are trademarks of QUALCOMM Incorporated.

Microsoft, Outlook, Outlook Express, and Windows are either registered trademarks or trademarks of Microsoft Incorporated in the United States and/or other countries.

Adobe, Acrobat, and Acrobat Exchange are registered trademarks of Adobe Systems Incorporated.

Apple and the Apple logo are registered trademarks, and QuickTime is a trademark of Apple Computer, Inc.

Netscape, Netscape Communicator, and Netscape Messenger are registered trademarks of the Netscape Communications Corporation in the United States and other countries. Netscape's logos and Netscape product and service names are also trademarks of Netscape Communications Corporation, which may be registered in other countries.

Certicom™ and SSL Plus™ are trademarks of Certicom Corp. Copyright © 1997-2000 Certicom Corp. Portions are subsidiary of Certicom Corp. All rights reserved. Protected by U.S. 6,049,815; U.S. 5,896,455; U.S. 5,889,865, U.S. 5,761,305; U.S. 5,787,028; U.S. 4,745,568. Patents pending.

All other trademarks and service marks are the property of their respective owners.

Use of the Eudora software and other software and fonts accompanying your license (the "Software") and its documentation are governed by the terms set forth in your license. Such use is at your sole risk. The Software and its documentation (including this manual), and QUALCOMM's software maintenance and extended maintenance, if applicable, are provided **"AS IS"** and without warranty of any kind and QUALCOMM AND ITS LICENSORS (HEREINAFTER COLLECTIVELY REFERRED TO AS "QUALCOMM") EXPRESSLY DISCLAIM ALL WARRANTIES, EXPRESS OR IMPLIED, INCLUDING, BUT NOT LIMITED TO THE IMPLIED WARRANTIES OF MERCHANTABILITY AND FITNESS FOR A PARTICULAR PURPOSE AND AGAINST INFRINGEMENT. QUALCOMM DOES NOT WARRANT THAT THE FUNCTIONS CONTAINED IN THE SOFTWARE WILL MEET YOUR REQUIREMENTS, OR THAT THE OPERATION OF THE SOFTWARE WILL BE UNINTERRUPTED OR ERROR-FREE, OR THAT DEFECTS IN THE SOFTWARE WILL BE CORRECTED. FURTHERMORE, QUALCOMM DOES NOT WARRANT OR MAKE ANY REPRESENTATIONS REGARDING THE USE OR THE RESULTS OF THE USE OF THE SOFTWARE OR ITS DOCUMENTATION IN TERMS OF THEIR CORRECTNESS, ACCURACY, RELIABILITY, OR OTHERWISE. NO ORAL OR WRITTEN INFORMATION OR ADVICE GIVEN BY QUALCOMM OR A QUALCOMM AUTHORIZED REPRESENTATIVE SHALL CREATE A WARRANTY OR IN ANY WAY INCREASE THE SCOPE OF THIS WARRANTY. SOME JURISDICTIONS DO NOT ALLOW THE EXCLUSION OF IMPLIED WARRANTIES, SO THE ABOVE EXCLUSION MAY NOT APPLY.

UNDER NO CIRCUMSTANCES INCLUDING NEGLIGENCE, SHALL QUALCOMM, ITS LICENSORS OR THEIR DIRECTORS, OFFICERS, EMPLOYEES OR AGENTS BE LIABLE FOR ANY INCIDENTAL, SPECIAL OR CONSEQUENTIAL DAMAGES (INCLUDING DAMAGES FOR LOSS OF BUSINESS, LOSS OF PROFITS, BUSINESS INTERRUPTION, LOSS OF BUSINESS INFORMATION AND THE LIKE) ARISING OUT OF THE USE OR INABILITY TO USE THE SOFTWARE OR ITS DOCUMENTATION, EVEN IF QUALCOMM OR A QUALCOMM AUTHORIZED REPRESENTATIVE HAS BEEN ADVISED OF THE POSSIBILITY OF SUCH DAMAGES. SOME JURISDICTIONS DO NOT ALLOW THE LIMITATION OR EXCLUSION OF LIABILITY FOR INCIDENTAL OR CONSEQUENTIAL DAMAGES SO THE ABOVE LIMITATION OR EXCLUSION MAY NOT APPLY.

In no event shall QUALCOMM's total liability to you for all damages, losses, and causes of action (whether in contract, tort, including negligence, or otherwise) exceed the amount paid for the Software and its documentation.

Acknowledgments

The Eudora software for version 6.0 was designed and developed by Shrinivas Bairi, Jeff Beckley, John D. Boyd, Rob Chandhok, Sagar Chitnis, Marshall Clow, Steve Dornier (original author of Eudora), Sangita Mohan, Apul Nahata, Martin Naskovski, Ben Ogdon, Eitan Pilipski, Raj Pitchaimani, Bill Rhodes, Jim Riley, Keerthi Sundarmurthy, Geoff Wenger, and Dale Wiggins. The software was quality assured by Greg Brown, Richard Drew, David Hom, Gwen Huntley, and Jason Miller. Other contributors to this version of Eudora are Danny Atwood, Craig Beck, Ellen Boemer, Anton de Anda, Matt Dudziak, Bill Ganon, Carolyn Schultz, Armand Rouleau, Dawn Shump, Joe Toth, and Jim Ybarra. This manual was written by Eugene Son. Thanks to all the users and testers of Eudora, whose suggestions have made it a much better program than it otherwise would have been.

The SpamHeaders plug-in was made easy thanks to the Boost Regular Expression Library, one of a group of free, peer reviewed portable C++ libraries maintained at <http://www.boost.org>.

The SpamWatch plug-in was heavily influenced by work done by Paul Graham, and publicized in his article "A Plan for Spam" <http://www.paulgraham.com/spam.html>, and additional suggestions made by Gary Robinson in his Linux Journal article "Spam Detection" <http://radio.weblogs.com/0101454/stories/2002/09/16/spamDetection.html>.

About the Name

Why the name Eudora?

When looking for a name for this new Post Office Protocol mail program, we thought immediately of the title of the short story "Why I Live at the P.O.," and named the program after the author of the story, Eudora Welty.

"Why I Live at the P.O." can be found in a collection entitled A Curtain of Green and other stories (Harcourt Brace & Co.). Ms. Welty's stories are funny, sad, and fascinating; she's surely one of the great American writers.

Eudora 6.1 New Features	4
Using Web Words	4
SpamWatch Statistics	7
IMAP	8
Content Concentrator	10
Contextual Filing	12

Eudora 6.1 New Features

Welcome to Eudora® 6.1! This document describes the new features and functions in Eudora 6.1 for Windows.

- **Web Words.** Search the Internet and your email while in Eudora.
- **SpamWatch Statistics.** Display and print reports of your junk mail volume.
- **IMAP.** Enhanced IMAP support in Eudora makes it easier to check multiple mailboxes for new mail.
- **Content Concentrator.** Enhanced Content Concentrator allows you to change the level of concentration right from the preview pane.
- **Contextual Filing.** Enhanced Contextual Filing lets you highlight a specific word in any message and transfer it to any mailbox that includes the word in its name.

Using Web Words

Web Words provide you with two easy ways to access search engines:

- Clicking a word or words in your email to activate a contextual search
- Typing your search query in your toolbar.

You can now highlight a word or words anywhere in a message (header or text) and search the Internet for that topic. For example, you can highlight the word "flowers" anywhere in the message and search the Internet for all topics relating to flowers.

Or you can type your search query in your toolbar and search the Internet for that topic.

To search using the toolbar

1. Click in the Search field on your toolbar.

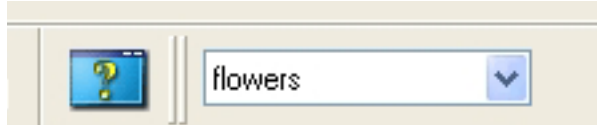
Toolbar Search Field



2. Type the text that you wish to search the Internet for.

The text that you type appears in the Search Web field.

Toolbar Search Field



3. Press the **Return** key.

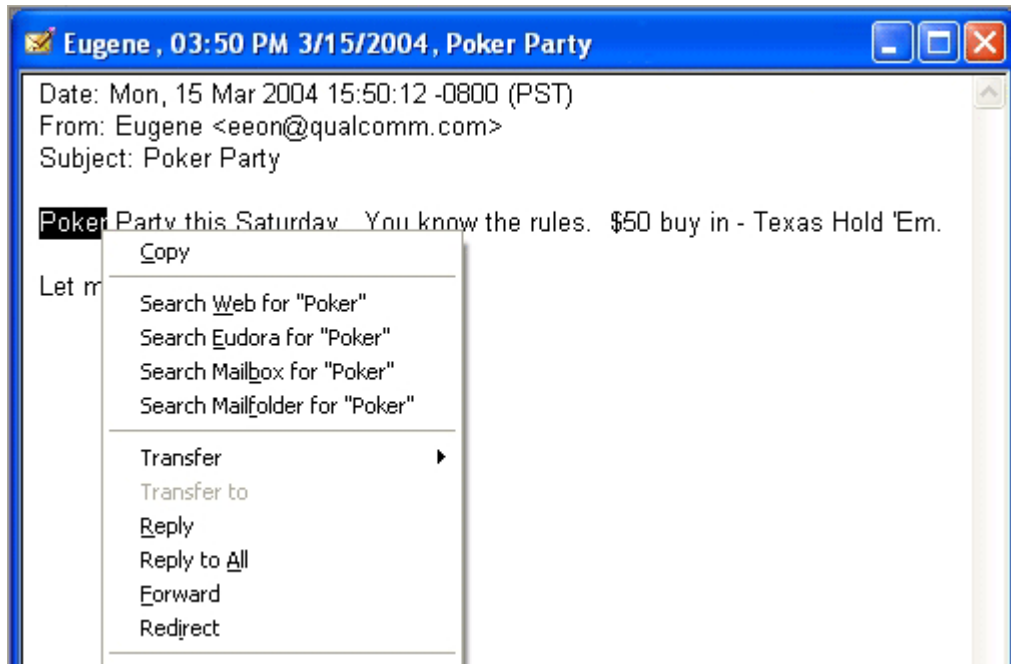
Eudora launches your web browser and initiates a search for the topic.

To search using a pull down menu

1. Highlight a word or words in an email.
2. Right-click the word.

A contextual submenu appears showing the option to Search for your topic.

Web Words submenu



3. Choose one of the search options:

- **Search Web** - Eudora launches your web browser and initiates a search for the highlighted text.
- **Search Eudora** - Eudora searches all your mailboxes for the text you entered in the search field.
- **Search Mailbox** - If you have a mailbox opened, Eudora searches that mailbox for the text. If you have a message opened, Eudora searches the mailbox that the message is in.
- **Search Mailfolder** - If you have a mailbox opened, Eudora searches all the mailboxes in the same mail folder as the open mailbox.

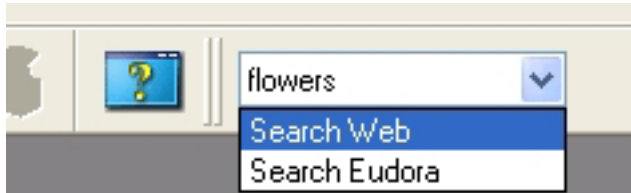
TIP: If you want to search on a single word only, you do not have to highlight the word. Simply press the Control key and click or right-click on the word to start a search.

Searching in Eudora

The search field on your toolbar can also be used to search inside Eudora. Type the words you wish to search for, then click on the arrow to the right of the field.

A submenu appears with further search options.

Submenu

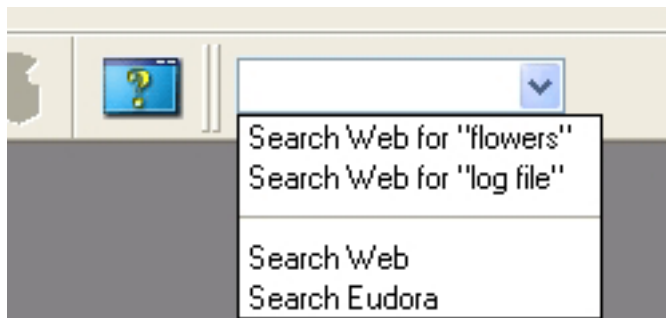


Choose one of the following search options:

- **Search Web** (default) - Eudora launches your web browser and initiates a search for the text you entered in the search field.
- **Search Eudora** - If you have an item open in Eudora (such as a mailbox or an email), Eudora searches it for any text you entered in the search field. If you do not have anything highlighted, it searches all your mailboxes in Eudora.

The submenu also displays your most recent searches at the top of the search menu.

Recent Searches

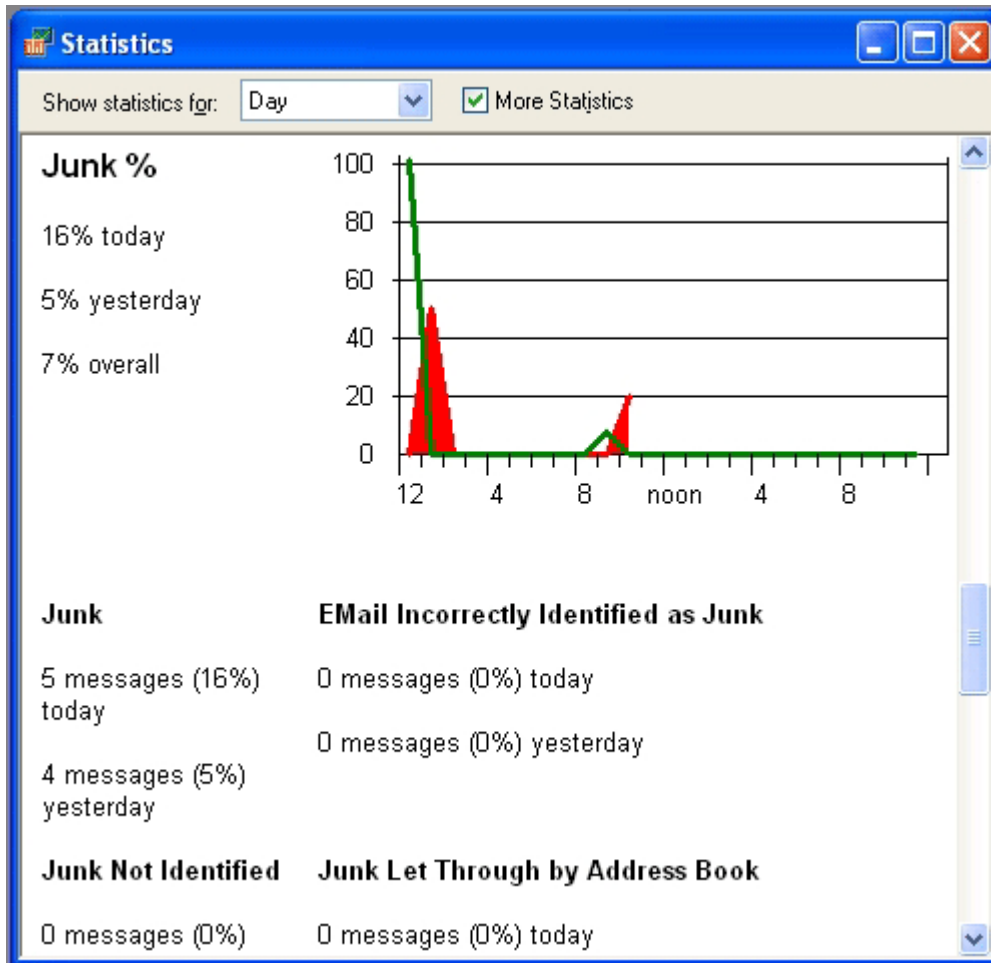


SpamWatch Statistics

Eudora usage statistics keep track of how many messages you receive and send in a particular day, week, month, or year. You can print the statistics and charts.

With Eudora 6.1, you can now view statistics and charts based on the emails that SpamWatch scores as being Junk.

Junk Mail statistics window



Accuracy of statistics is based on your usage of the Junk and Not Junk commands to train and correct SpamWatch.

See **Statistics Window** in your Eudora User Manual (page 210-212) for more information on using Statistics.

IMAP

New enhanced IMAP support in Eudora makes it easier to check multiple mailboxes for new mail.

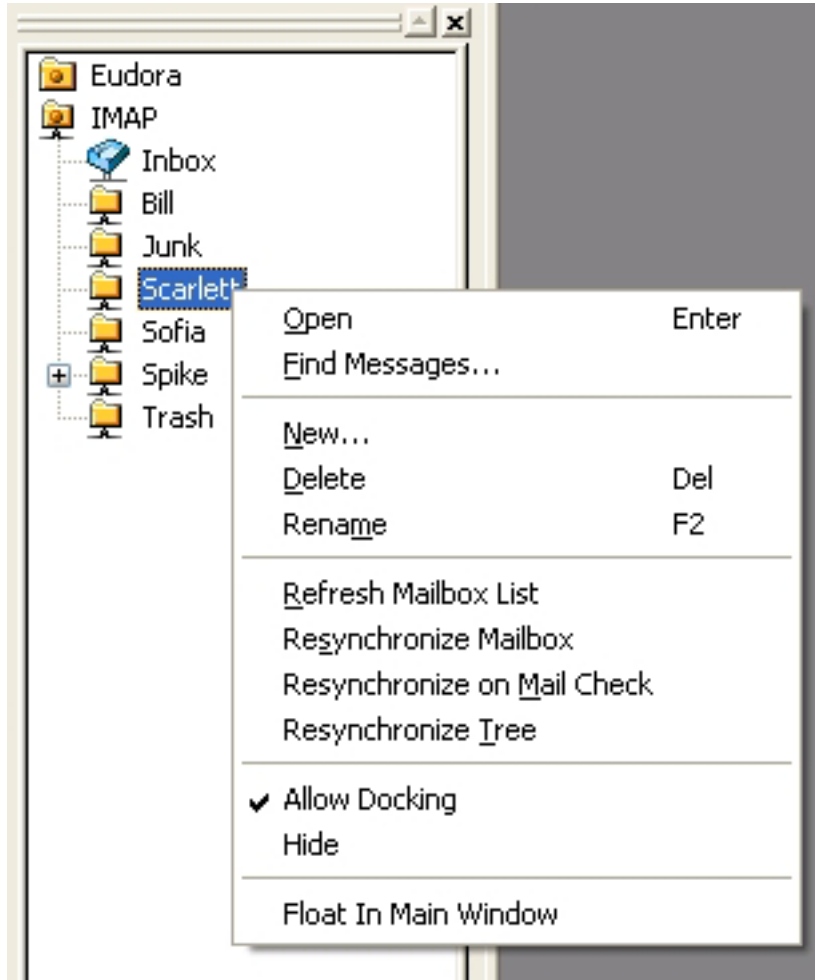
1. From the Tools menu, choose **Mailboxes**.

A window appears with a list of your mailboxes.

2. Right click an IMAP mailbox

A contextual menu appears.

IMAP contextual menu



From this menu, you can use the following IMAP commands:

- **Refresh Mailbox List** - This command displays the latest update of the mailboxes that exist on the IMAP server.
- **Resynchronize Mailbox**- This command resynchronizes the mailbox on your computer with the mailbox on the IMAP server.
- **Resynchronize on Mail Check**- This command sets Eudora to synchronize the mailbox every time Eudora checks for new mail.
- **Resynchronize Tree** - This command resynchronizes a mailbox and all its nested mailboxes.

TIP: When using the *Resynchronize on Mail Check*, the icon of the mailbox changes to easily tell which mailboxes will resynchronize on every mailcheck.

The mailbox Scarlett is set to Resynchronize on Mail Check. The other mailboxes have the normal icon because they must be resynchronized manually.



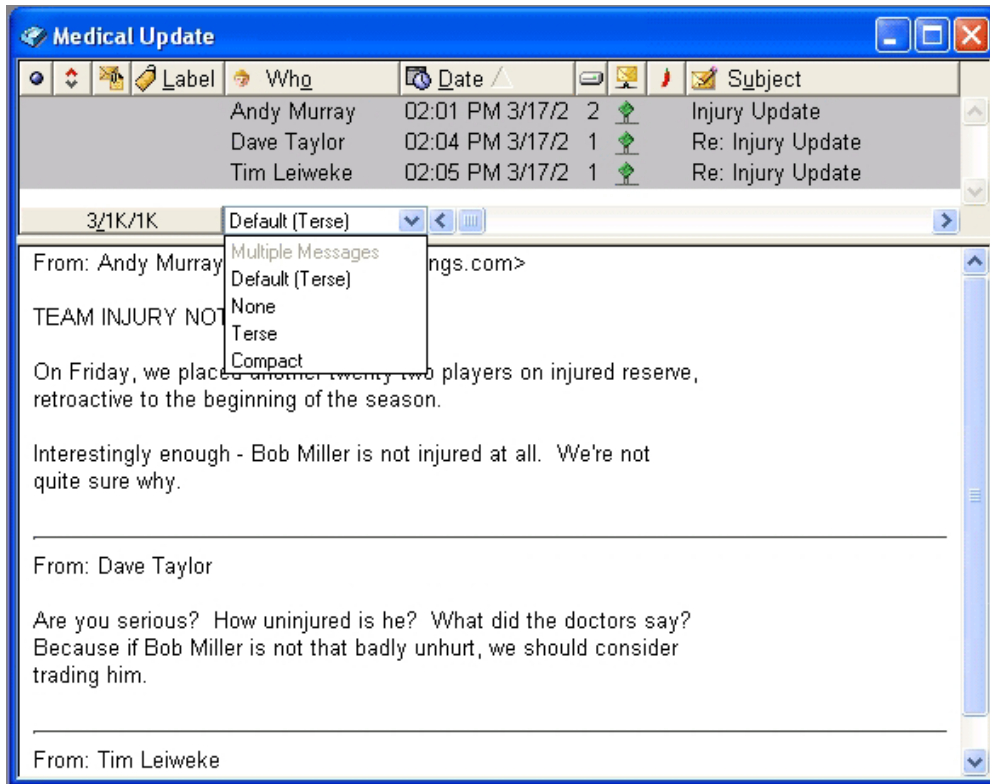
Content Concentrator

Content Concentrator now allows you to change the level of concentration right from the preview pane. Instead of setting the level of concentration in your Eudora Options, you can now change the level for each mailbox.

To change the level for each mailbox

1. Click the Content Concentrator button directly above the Preview Pane in the middle of the mailbox, between the "Mailbox Size Display" and the horizontal scrollbar.

A contextual menu appears.

Contextual Concentrator drop-down menu

- Choose one of the options from the contextual menu. If a single message is highlighted, the default is **Compact**. If multiple messages are highlighted, the default is **Terse**.
- Choose one of the following options:
 - None** - This turns off Content Concentrator. There is no change in the message format.
 - Compact** - Message is truncated; that is, excess headers and text are removed and replaced with ellipses and a snip indicator. Only the To:, From:, Subject:, and CC: headers appear in the message.
 - Terse** - Message is truncated further; only the From: field of the header appears in the message and the concentrated body of the message.

For information on the Content Concentrator settings, see Content Concentrator in the Eudora Manual.

Contextual Filing

Eudora now supports partial matches in Contextual Filing. You can highlight a word anywhere in a message and transfer the message to a mailbox which contains that word within the mailbox name.

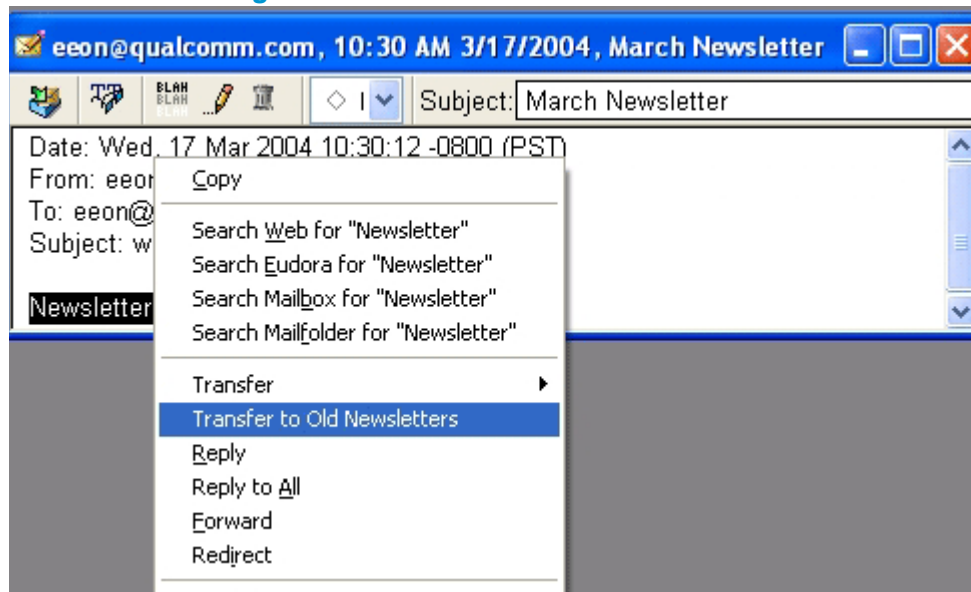
For example, if you have a mailbox named **Old Newsletters**, you can highlight the word "Newsletter" and transfer the entire message to the Old Newsletters mailbox.

To perform a contextual filing

1. Highlight the word (or words).
2. Right-click the word.

The contextual filing submenu appears showing the mailbox(es) with similar name(s).

Contextual filing submenu



3. Choose the mailbox.

The message transfers to the selected mailbox.