



# MuVi 24



# Manual

Version 1.0

## Table of Contents

<i>Table of Contents.....</i>	<i>1</i>
<i>1. Safety Precautions.....</i>	<i>2</i>
<i>2. Package Contents.....</i>	<i>2</i>
<i>3. Introduction.....</i>	<i>2</i>
<i>4. Main Menu.....</i>	<i>3</i>
4.1 Music Mode.....	4
4.2 Video Mode .....	4
4.3 FM Mode.....	5
4.4 Photo Mode .....	6
4.5 E-Book Mode .....	6
4.6 Record Mode.....	6
4.7 Navigation Mode.....	7
4.8 Game Mode.....	7
4.9 Settings Mode.....	8
<i>5. Connecting your device to your PC .....</i>	<i>10</i>
<i>6. Technical support.....</i>	<i>10</i>
<i>7. Technical Specifications .....</i>	<i>11</i>
<i>8. Appendix A: Video Converter Tool.....</i>	<i>12</i>

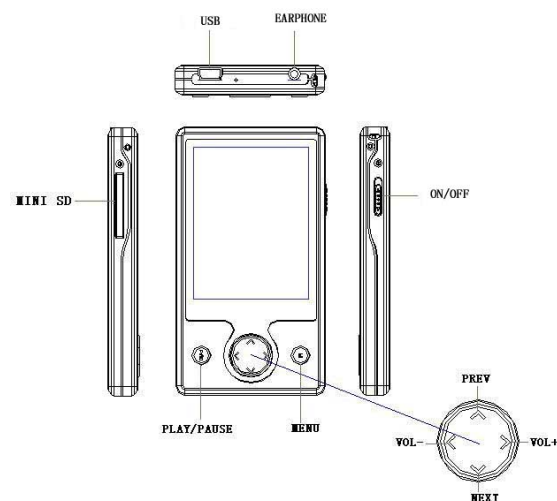
## 1. Safety Precautions

1. Do not put the player in the condition of high temperature, humidity or dust.
2. Do not put the player in high temperature place (over 40 °C).
3. Do not knock or hit the player, especially do not shake TFT screen in order to avoid TFT being seriously damaged.
4. Do not disconnect the player abruptly during the formatting or uploading and downloading, otherwise, it will cause program error.
5. We will not be responsible for any obligation for any memory loss caused by product damage, repair or other reasons.  
Please operate correctly as per the manual.
6. Do not use alcohol or benzene to clean the surface of the player.
7. Please charge in the following conditions:
  - Battery electricity icon displays no electricity.
  - Further power on the player when the system is powered off automatically, but it powers off soon.
  - No response with the pressing keys.

## 2. Package Contents

1. MuVi 24 MP4 Player
2. Stereo earphones
3. USB extension cable
4. CD with utilities and Windows 98 drivers
5. AC to USB Charger
6. User's Manual / warranty card

## 3. Introduction



### Function Keys:

1. **Play:** "►" Performs **Power ON/OFF /Play/Pause/Stop**.  
Keep pressing "►" to power on or power off the MP4 Player.  
You can then press "►" for play or pause.

2. **Menu: "M"** key performs different operations by continuous pressing or by pressing once.  
By continuous pressing you return to the main menu from any submenu  
By pressing once you confirm your choice and/or you are transferred to the next submenu.
3. **Next: "▶▶"** Short press: Move to next song.  
Long press: fast forward.
4. **Previous: "◀◀"** Short press: Move to previous song.  
Long press: fast reverse.
5. **Vol:** press this button and use the "◀◀" and "▶▶" to increase volume or decrease volume.
6. **Power ON/OFF:** Use this to switch on/off your device.

#### Ports

7. **USB:** Interface with computer.
8. **Mini SD Slot:** Insert your mini SD card in this slot.
9. **Headphone:** Headphone interface.
10. **MIC:** Integrated microphone for voice recording.



#### **IMPORTANT: How to power on/off your device**

It is preferable to use the **Play: "▶"** button for powering ON/OFF your device. The ON/OFF switch on the side of MuVi 24 works more like a reset button. If you switch your device using this switch you may loose your settings (e.g. radio stations e.t.c).

## 4. Main Menu

Press the Play button "▶" continuously to switch on the MP4 player. If you are already inside a certain menu (e.g. Music or FM) press "M" continuously in order to view the main menu as below.



## 4.1 Music Mode



- **Play/Stop/Pause**

In Music Play menu, connect the earphone with player, select the desired song file by pressing [PREV/NEXT] key, short press [MENU] key to begin the playing, and then short press [PLAY/PAUSE] key to pause, operate it circularly. During the playing of music, the interface has real audio frequency display.

The player only supports the Lyric Synchronous Display that the file shares the same name as LRC file of MP3 format, e.g., music file is named as "Angel.mp3", the LRC file must be named as "Angel.lrc", what's more, they have to be in the same directory, press [PREV/NEXT] to change the display frequency and the display lyric.

- **Music Play Setting Menu**

In Music Play state, long press [MENU] to see the explorer in order to choose your song. Choose your song or long press [MENU] key to return Main Menu. In the main menu you can enter the "Music" in "Settings" option, there are multi options, push [VOL+/VOL-] key to shift to the desired setup menu. After your selection, press [MENU] key to confirm.

- **A-B Repeat function**

In Music Play state, press [MENU] to begin the repeat, A will display on the screen, press [MENU] to choose the ending point of the repeat, A-B will display, the player will repeat between the beginning point and the ending point. Note: the repeat function doesn't work during the Pause state.

## 4.2 Video Mode



While under the video playing menu, press [PLAY/PAUSE] key to stop the video playing,

Long press [MENU] to exit

Long press [NEXT] for fast forward playing

Long press [PREV] to fast backward playing.

## 4.3 FM Mode



Enter FM menu, Press [MENU] key to select: Manu, Auto, Mem, Pres, Del

**Manu:** Press [MENU] Key to confirm

Press [PREV/NEXT] to change the frequency manually

Long press [MENU] to exit.

**Auto:** Press [MENU] to enter, the player will automatically search

Press [PREV/NEXT] to select the station.

**Memory:** Press [MENU] key to enter

Press [VOL+/VOL-] to select the stations

Press [MENU] to confirm store, the frequency display on screen will replace the frequent that stored before.

First Short press [MENU] to exit Del, then long press [MENU] to return FM menu.

**Del:** Press [MENU] key to enter

Press [VOL+/VOL-] to select the station that you want to delete

Press [MENU] to confirm, after delete the stations frequent will display "empty",

First Short press [MENU] to exit Del

Then long press [MENU] to return to FM menu.

### **FM record:**

When you listen FM music.

Long press [PLAY/PAUSE] key to record and pause selecting.

Long press [MENU] key to store the Music as file and exit FM record mode.



### **Note:**

In FM mode, the earphones are used as antenna.

Keep the earphones well connected to the device in order to be able to enjoy FM radio.

## 4.4 Photo Mode



- **JPEG Browser**

In Main Interface, short press [MENU] key to confirm to enter Picture Browse mode

Push [VOL+/VOL-] key to select the previous or next picture.

## 4.5 E-Book Mode



- **Download TXT File**

Connect the player to computer, select the desired file to download and save the file as TXT format in portable disk.

- **Read File**

In Main Interface, enter Text option, push [VOL+/VOL-] key to select the desired file to read, then short press [MENU] key to read. Turn pages by [PREV/NEXT] key. Press [PLAY/PAUSE] key to auto turn pages

- **Store Bookmark**

In the e-book menu, press [VOL +] to display the store bookmark

Press [PREV/NEXT] key to select the bookmark

Press [MENU] to save the text in the current page.

Long press [VOL -] to pick up the bookmark

Press [PREV/NEXT] key to select the bookmark

Press [MENU] to pick up the text you have stored.

## 4.6 Record Mode



- **Voice REC**

In Main Interface, enter Record state, press [PLAY/PAUSE] key to start recording.

Press [PLAY/PAUSE] key to pause recording.

Long press [MENU] key to save the record and exit the REC mode.

- **REC Setup**

In Stop state of REC mode.

Hold [MENU] key to exit the Main interface.

Enter [Record] option.

Adjust the settings among [REC Quality]/ [REC Volume].

- REC Quality: high quality, general quality (the first one has larger REC file and better effect the second one is in the opposite)
- REC Volume: five options of +1, +2, +3, +4 and +5. The higher level, the larger recorded volume.



**Note:**

The recorded voice files can be found in Music Play menu.

If the screen displays "Full Space", it indicates that there is no space for new recorded file.

Delete other files to release more space.

## 4.7 Navigation Mode



Navigation Mode is one of the function characteristics, which allow you to review and delete the files inside the device.

You can also review the structure and contents more clearly.



**Note: Delete File**

In navigation mode, you can select music or video files.

Press [NEXT] key to display delete Dialog box.

Select "Yes" to delete and "No" to cancel.

Short press [MENU] key to implement the selected option.

## 4.8 Game Mode





- **Built-in Game: Tetris**

In System Menu, enter Game mode, short press [PLAY/PAUSE] key to enter Game Setup Interface.

### **Note: Key Operations**



Short press [PLAY/PAUSE] key to shift between Start and Pause functions,

Push [VOL+/VOL-] to control the movement of blocks.

Press [PREV] to rotate.

Short press [Menu] to fall down much more quickly

Press [NEXT] key to fall down a little quickly.

Long press [MENU] key to exit.

## **4.9 Settings Mode**

### **Main Interface**

After entering the Main Interface, select your desired option among

[Music ]/[Video ]/ [FM ]/ [Photo]/[Text]/[Record]/[Navigation]/[Game]/[Setting] circularly by pushing [PREV/NEXT]

Short press the [MENU] key to enter the option menu

Long press [MENU] key to exit the submenu and return to Main Interface



### **Music**

- **Repeat Mode**

Once                      Stop after playing all the songs in each directory

Repeat 1                Repeat playing a single song.

Folder once            Play all the songs in the folder.

Folder repeat        Repeatedly play all the songs in the folder.

All once                Play randomly the songs in the current folder.

All repeat             Repeatedly play all the songs.

Intro                    Play all the songs of the first 10 seconds in the current folder.

- **Play Mode**

Choose between order play mode (the device play the songs one after the other) or Shuffle mode (the device plays the songs in random order)

- **EQ Setup**

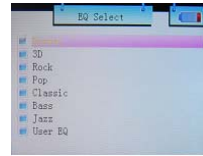
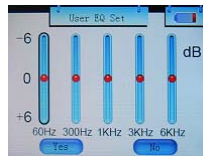
Normal/3D/Rock/Pop/Classic/bass/Jazz/User EQ, the above eight options will bring you different music effects.

- **User EQ**

First press the [PREV/NEXT] key to choose the “HZ” then press [VOL+ / VOL -] to adjust the “db”

For the others repeat the same

Press [MENU] key to confirm.



### Radio

- Stereo switch
- FM region: Select your FM region

### Record

- REC Quality: Select Between “high quality” and “General quality”
- REC Volume

### Display

- Backlight time: six options of 5 sec., 10 sec., 15 sec., 20 sec., 30 sec., and always on.
- Lum: five options of +1, +2, +3, +4 and +5, the lower level, the more bright.
- Backlight mode: two options of Normal and Electricity-saving modes.

### System

- Language Selection: twenty options of Greek, Simplified Chinese, Traditional Chinese, English, Korea, Japanese, Spanish, French, Deutsch, Italiano, Portuguese, Russian., Thai, Hebrew
- About: player storage memory, remain memory and system software version no, these information are read-only, short press [MENU] key to exit.
- Firmware Upgrading: Eject out the dialog box in this menu, it reminds you whether to upgrade the firmware, it will exit if no firmware upgrading.

### Power Off Time

In this menu, there are six options of Power: Off, 10 min., 15 min., 30 min., 60min. and 120 min.

### Defaulted Set

In this menu, confirm whether you want your device to be setup with the default settings , select “Yes” or “No”.

## 5. Connecting your device to your PC

The player has a high-speed USB2.0 port with the transmission speed of 5M/S, and is a standard USB disk, supports the systems including Windows98 (it needs to install the driver), over Windows2K (it's unnecessary to install the driver), Mac OS 10.3 and over, Linux Redhat 8.0 and over. It supports USB power supply and can be played without battery. After connecting to the PC, the player will display the On-line mode shown



If the battery is too low, the display will show "Low battery to power off"

The player will be powered off automatically.

You can use the extra travel charger to charge the battery.

During the charging, the battery icon will display the impulse, after the charging, the battery electricity will shows full grids. It requires 3 hours to fully charge your battery.



### **Note: Charging your Battery for first time**

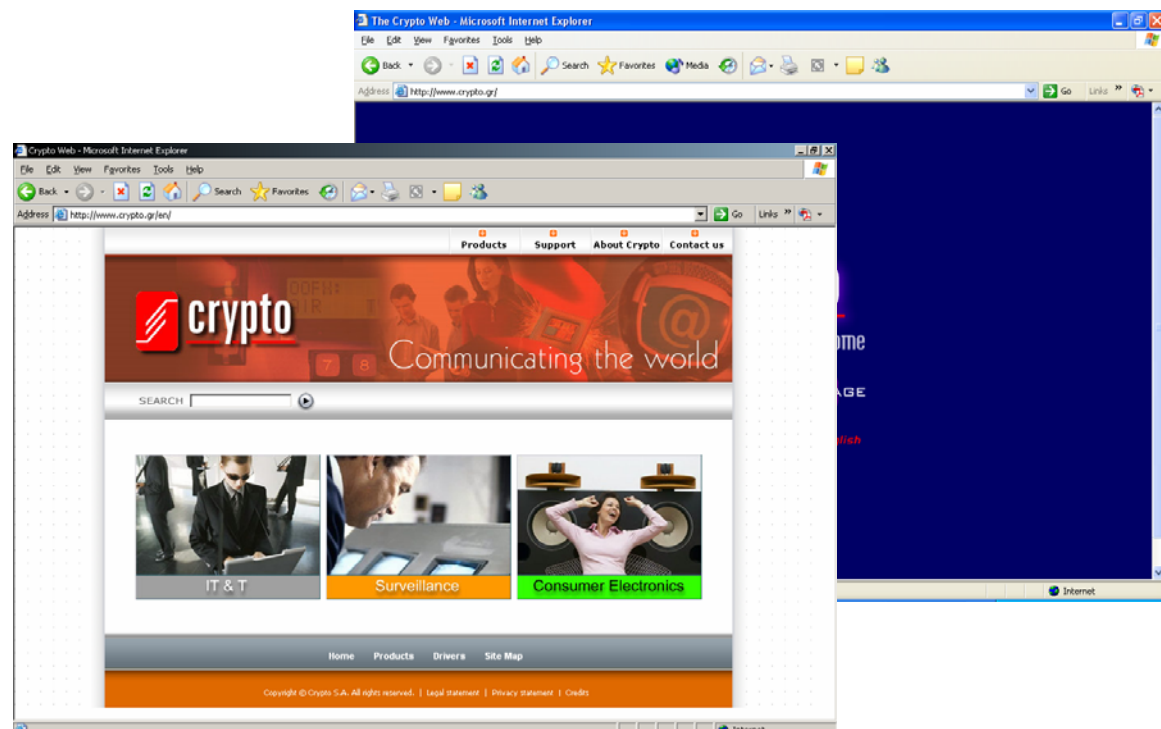
For the first two times, you have to charge your battery for 8 hours.

## 6. Technical support

For technical information and support please contact us:

Web Site: [www.crypto.gr](http://www.crypto.gr)

E-mail: [support@crypto.gr](mailto:support@crypto.gr)



## 7. Technical Specifications

### Audio File Types

- MP3
- WMA
- WAV

### Video File Types

- AVI
- RM / VOB / DAT/ (by software conversion)

### Picture File Types

- JPEG

### FM Radio

- Frequency: 87MHz-108MHz
- Radio Stations: 20 Preset Stations

### Equalizer

- Natural, Rock, Pop, Classic, Soft, Jazz, DBB

### Computer Connection

- USB2.0

### Screen

- Type: TFT
- Size: 2.4 inches
- Colors: 260.000
- Resolution: 320x240

### Power Supply

- Built-in rechargeable Li-Ion battery
- 3,7V, 400mah
- AC to USB Travel Charger

### Recording

- Recording Format: WAV(32Kbps)

### OS Compatibility

- Windows ME/XP/Vista
- WIN98 (by program installation)

### Physical Specifications

- Dimensions: 85×47×8 mm
- Weight: 50gr

Technical Specifications are subject to change without prior notice.

### Disposal of old electrical and electronic equipment



If you see this symbol on the product or on its packaging, you should hand the product over to the applicable collection point for the recycling of electrical and electronic equipment. Do not throw it away with household wastes.

The improper disposal of these products may have negative consequences for the environment and human health.

For more information about the recycling of this product, please contact your local city office, your household waste disposal service or the shop where you purchased it.

## 8. Appendix A: Video Converter Tool

Insert the CD into the CD-ROM open 'My computer' & double click on the CD-ROM icon. Open the folder "Video Converter tool" and execute the 'setup.exe' file by double clicking on it's icon.

A new window will appear.

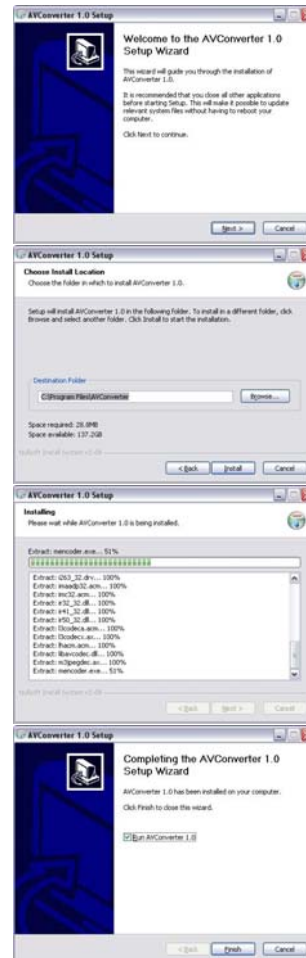
Click **Next** to continue with the installation procedure

Click **Install** in order to proceed with the installation

The Installation procedure may require a few seconds, depending on you hardware specifications

The Installation procedure is complete.

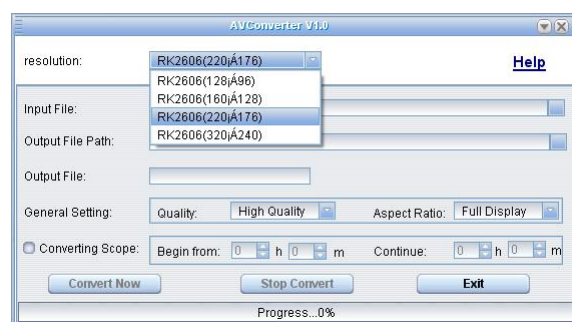
Click **Finish**



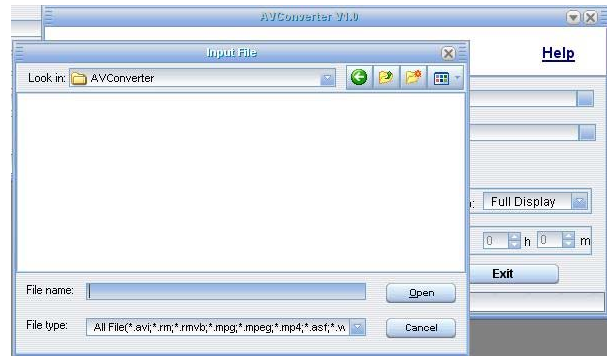
This tool can convert WMV, RM, AVI, VOB or DAT into AVI video format via the attached video convert software.

Choose you resolution

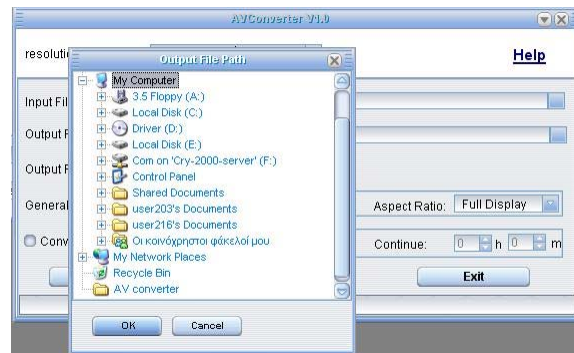
**Check the Note** at the finish of this Chapter



Select your Input file and press **open**

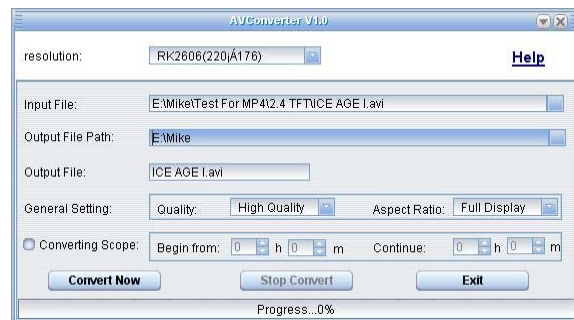


Select the folder you want to “export” your file and press **OK**



When you finish with your setting press **Convert Now**

Your file will be converted in AVI



### **Note: MP4 resolutions**

Check the Resolutions for the players Below.



- **MuVi 24** MP4 multimedia player 2.4”TFT → 320\*240 pixels
- **MuVi 22** MP4 multimedia player 2.2”TFT → 220\*176 pixels
- **MuVi 18** MP4 multimedia player 1.8”TFT → 160\*128 pixels

Use the requested resolutions for the above players