

Wireless USB HUB

User's Manual

ABOUT THIS MANUAL

This manual is designed for use with the Wireless USB Hub. Information in this document has been carefully checked for accuracy; however, no guarantee is given to the correctness of the contents. The information in this document is subject to change without notice. The manufacturer does not make any representations or warranties (implied or otherwise) regarding the accuracy and completeness of this document and shall in no event be liable for any loss of profit or any commercial damage, including but not limited to special, incidental, consequential, or other damage.

SAFETY INSTRUCTIONS

Always read the safety instructions carefully:

- Keep this User's Manual for future reference
- Keep this equipment away from humidity
- If any of the following situation arises, get the equipment checked by a service technician:
 - The equipment has been exposed to moisture.
 - The equipment has been dropped and damaged.
 - The equipment has obvious sign of breakage.
 - The equipment has not been working well or you cannot get it to work according to the User's Manual.

COPYRIGHT

This document contains proprietary information protected by copyright. All right are reserved. No part of this manual may be reproduced by any mechanical, electronic or other means, in any form, without prior written permission of the manufacturer.

TRADEMARKS

All trademarks and registered trademarks are the property of their respective owners or companies.

Table of Contents

1. Introduction	1
Features.....	1
Package Contents.....	1
System Requirements.....	1
LED Status	1
Applicable for Serial Product of WUSB	2
2. Installation	3
Hardware Connection	3
On Windows XP	4
On Windows Vista.....	9
3. Specifications.....	15
4. Regulatory Compliance	17
CE	17
WEEE Information	17

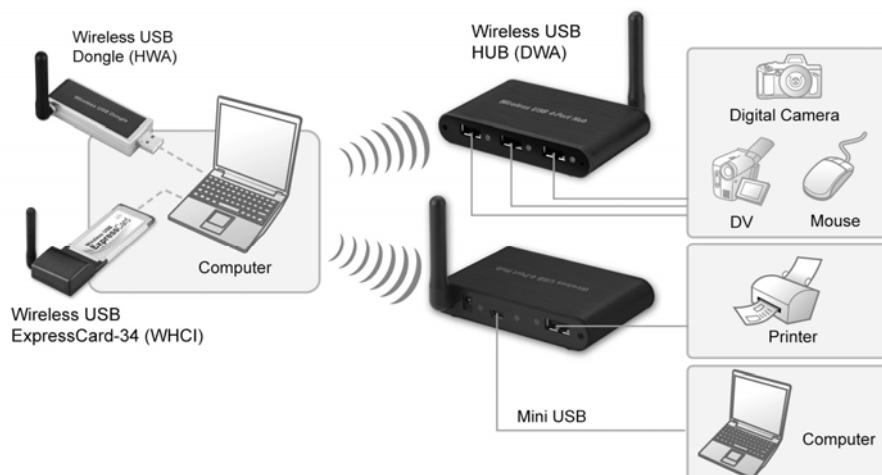
1. Introduction

USB printer, scanner, flash drives, external hard drives, and other USB devices are able to plug directly into the Wireless USB Hub and receive wireless connectivity to a PC or laptop... Wireless USB is great for laptop users who would like to use external USB storage and other devices without the need to be tied to a desk. It's also a good choice for desktop users who simply wish to reduce cable clutter.

Wireless USB 1-Port Hub



Wireless USB 4-Port Hub



HWA (Host Wire Adapter) ; DWA (Device Wire Adapter) ; WHCI (Wireless Host Controller Interface)

Features

- No more wires , and less cable cutter
- Wirelessly add USB ports to your computer
- Wirelessly connects USB device as printers, cameras, scanners, network sharing and other devices to your computer
- Operation range up to 10 meter (Ideal distance : 3 meters)
- Transmission speeds of up to 480Mbps
- UWB (Ultra-Wide Band) technology use

Package Contents

- Wireless USB Hub x1
- AC power adapter x1
- USB A-Type to Mini-B Cable x1
- CD (Driver and User's Manual) x1
- Quick Installation Guide x1

System Requirements

- Windows® XP SP2 and Vista™ 32/64-bit

LED Status

Color	Description
Red	■ Power on
Blue	■ LED blinks when is made the association.
	■ LED lights when is associated wirelessly.
Green	■ LED lights when USB port connects.

Applicable for Serial Product of WUSB

- Wireless USB Dongle
- Wireless USB ExpressCard /34

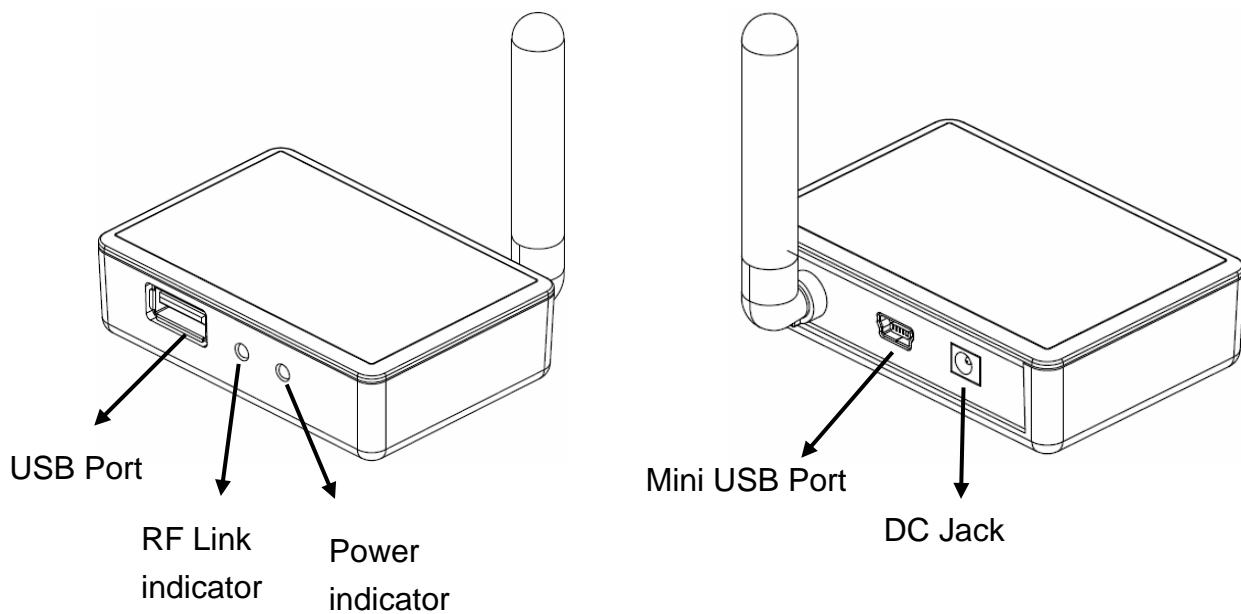
Note :

Environmental factors will affect wireless signal range vary. Actual wireless performance depends on lots of factors, including wireless distance, network condition, operation system, hardware environment, actual data throughput and else.

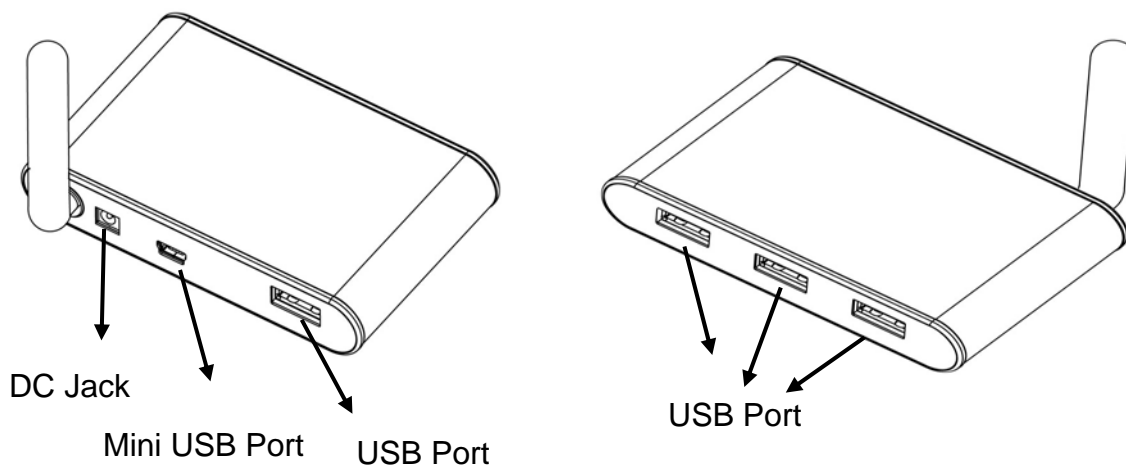
2. Installation

Hardware Connection

Wireless USB 1-Port Hub



Wireless USB 4-Port Hub



On Windows XP

Caution: DO NOT connect the product to your computer before installing the driver on the provide CD.

To install Wireless USB Hub Driver

1. Insert the provided CD into your disc drive and the installer program will run automatically when the **Wireless USB Hub** CD is inserted, and you may see the either screen as below. Please click **Install** to start the WUSB Driver install.

If the installer program doesn't run automatically, please locate and **double-click** on the **Autorun.exe** file in the CD to launch the install program.

2. Please wait while to run the **Wireless USB Hub Setup** of Preparing to Install...process, the actual need time will depends on your hardware environment.



- When you see the **InstallShield Wizard for Wireless USB Hub** screen as below, just click on **Next** anyway.



- When you see **License Agreement** screen as below, please click on **Yes**



- Please click on **Finish** to complete the installation of **Wireless USB Hub**.



6. Now you have completed the installation of **Wireless USB Hub**. And you may find the icon of **Wireless USB Manager** of below in red mark at the notification area. The Icon color in gray means the status of before makes wireless connection.



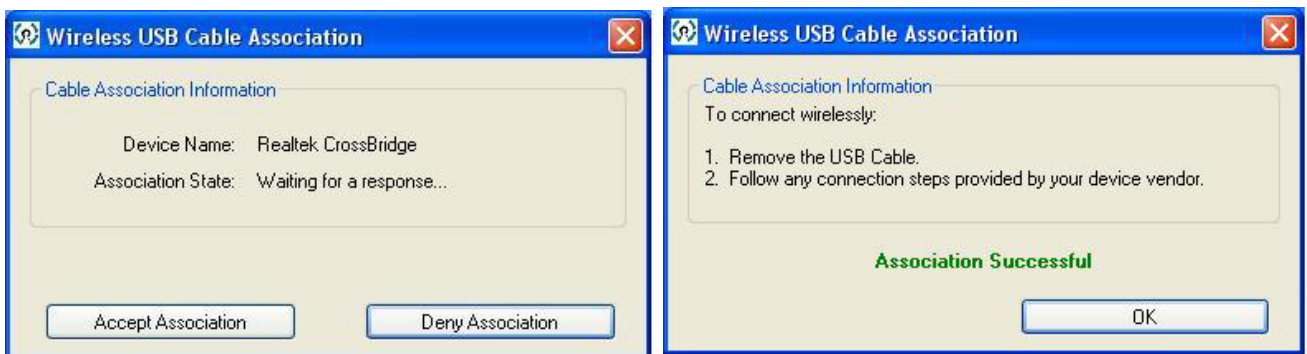
7. Please prepare **Wireless USB Host adapter** as Wireless USB Dongle, Wireless USB Expresscard ...etc, to make the **wireless connection** with Wireless USB Hub. And then you may start to enjoy using your device wireless.

Note : About the way of **wireless connection** between Wireless USB Host Adapter and Wireless USB device, please refer to the next page of **To Make Cable Association**.

To Make Cable Association

You will need to associate your Wireless USB device with the host adapter, so the device can be recognized and connected.

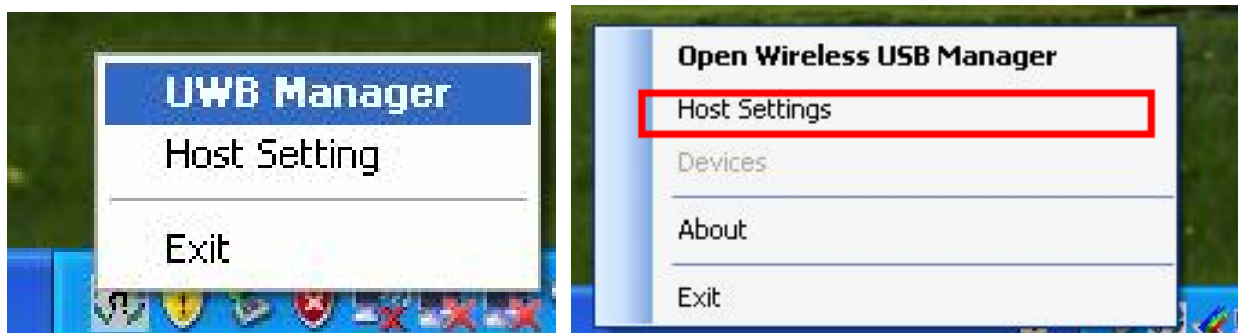
1. Both of **Wireless USB Host & Wireless USB Device** driver installation complete is necessary before you start to make cable association.
2. Get started by **plugging** your **Wireless USB host adapter** into an available USB or Expresscard/34 port your computer or notebook first , and then **Power on** your Wireless USB device after.
3. Using a **USB Type A to Mini B cable**, connect the wireless device to the computer.
4. When the **Wireless USB Cable Association** screen prompted as below, please Click on **Accept Association** and **OK** for **Association successful**.



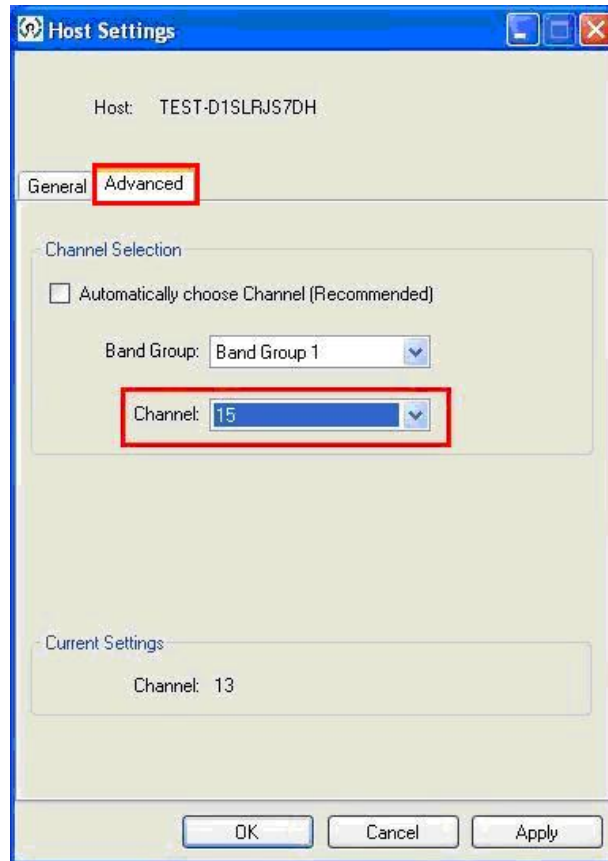
5. **Remove the USB Cable** on you Wireless USB device and you may find the **Wireless USB Manager** color in white, it means the status of device recognized and connected.



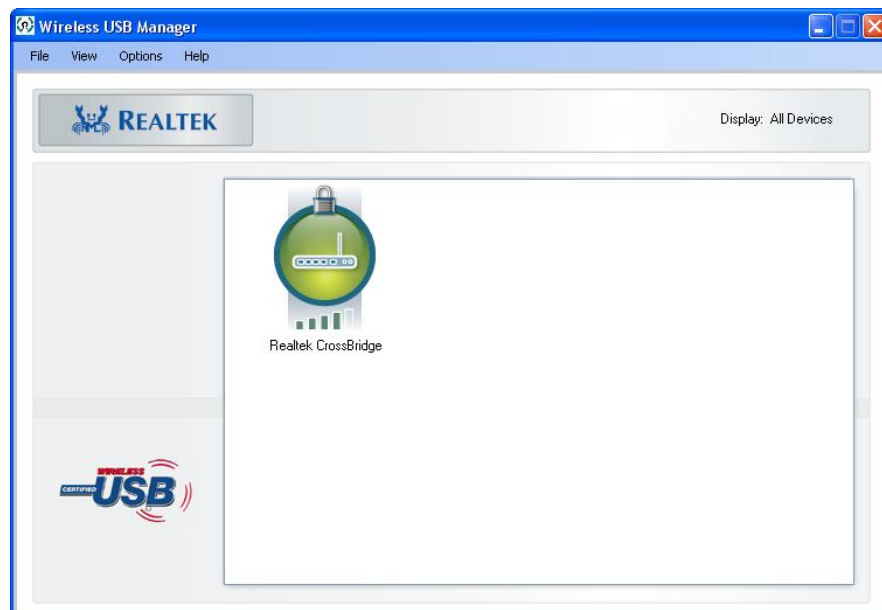
6. Right-click **Wireless USB Manager** and select **UWB Manager / Host Settings**.



7. Select 「**Advanced**」 and setting the **Channel** at **15**. (The step will only necessary when Wireless host adapter is Wireless USB Dongle in Europe version only).



8. Return to **Wireless USB Manager** and select **Open Wireless USB Manager**. The icon in **Green** represents association successful, and now you may start to enjoy using your device wirelessly.



**Actual strings depend on your Wireless USB Host adapter. These screen shots above are from Wireless USB Dongle and might vary slightly for Wireless USB Expresscard..*

On Windows Vista

Caution: DO NOT connect the product to your computer before installing the driver on the provide CD.

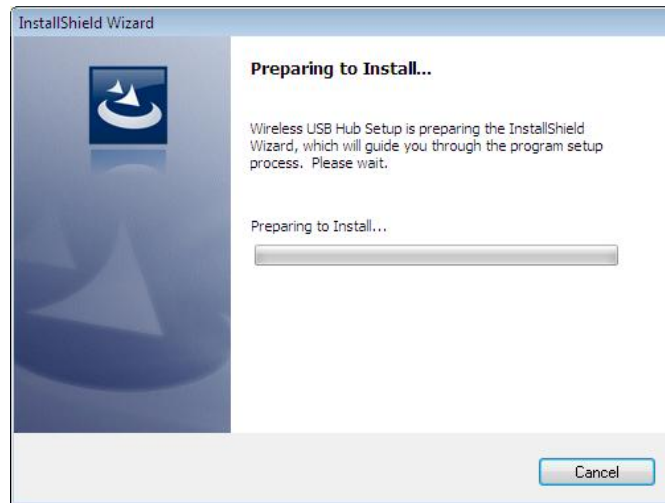
To install Wireless USB Hub Driver

1. Insert the provided CD into your disc drive and installer program will run automatically when the **Wireless USB Hub** CD is inserted. Please click on **Run Autorun.exe** to execute the installer program.

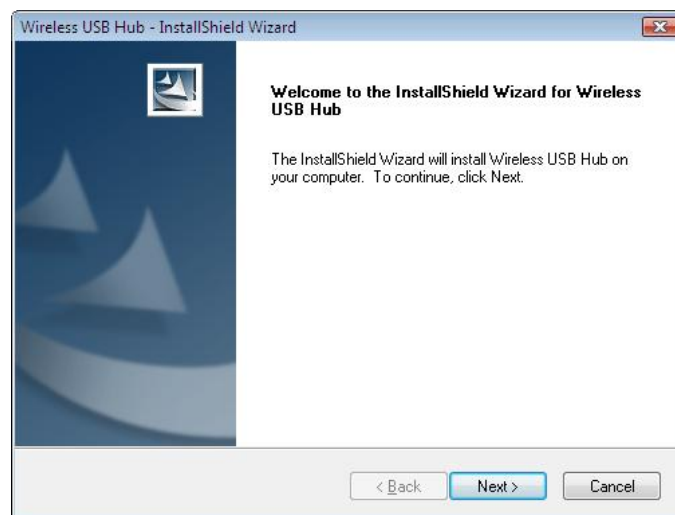


If the installer program doesn't run automatically, please locate and double-click on the **Autorun.exe** file in the CD to launch the install program.

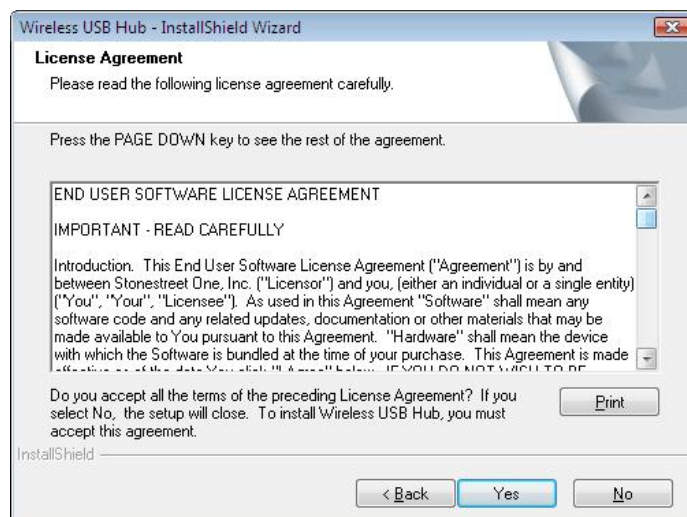
- Please wait while to run the **Wireless USB Hub Setup of Preparing to Install...** process, the actual need time will depends on your hardware environment.



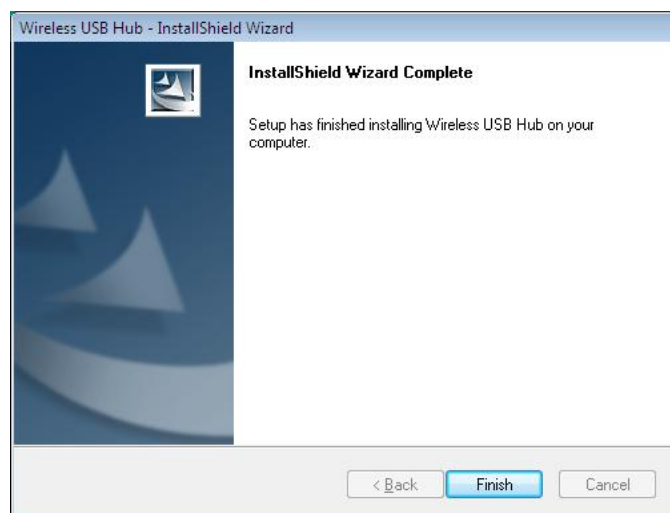
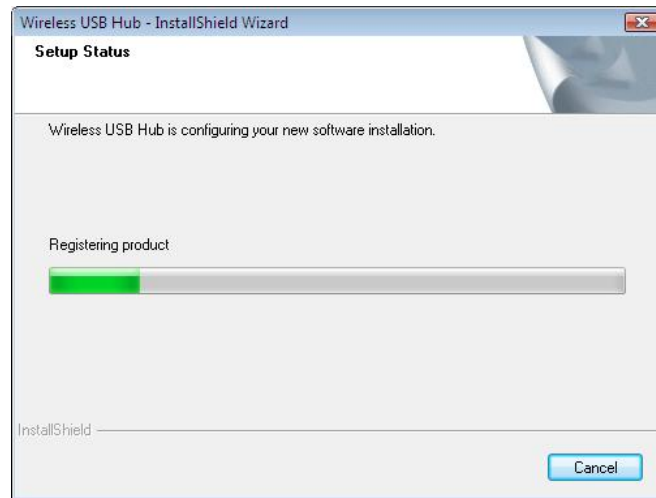
- When you see the **InstallShield Wizard for Wireless USB Hub** screen as below, just click on **Next** anyway.



- When you see **License Agreement** screen as below, please click on **Yes**



5. Wait while to configuration **Wireless USB Hub Setup** installation and then please click on **Finish** to complete the installation of Wireless USB Hub..



6. Now you have completed the installation of **Wireless USB Hub**. And you may find the icon of **Wireless USB Manager** of below in red mark at the notification area. The Icon color in gray means the status of before makes wireless connection.



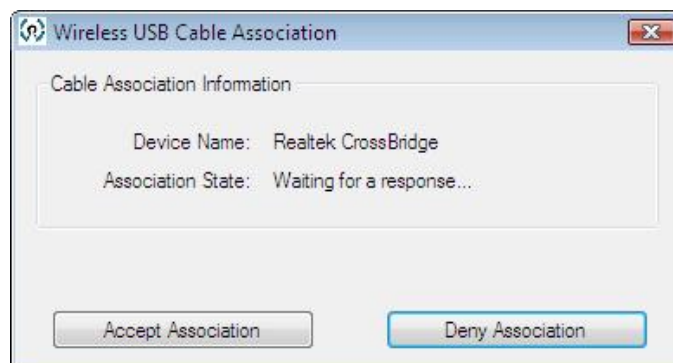
7. Please prepare **Wireless USB Host adapter** as Wireless USB Dongle, Wireless USB Expresscard ...etc, to make the **wireless connection** with Wireless USB Hub. And then you may start to enjoy using your device wireless.

Note : About the way of **wireless connection** between Wireless USB Host Adapter and Wireless USB device, please refer to the next page of **To Make Cable Association**.

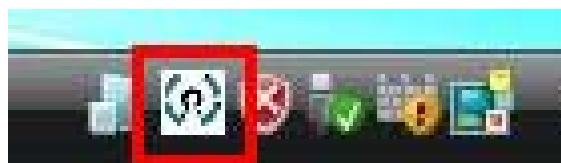
To Make Cable Association

You will need to associate your Wireless USB device with the host adapter, so the device can be recognized and connected.

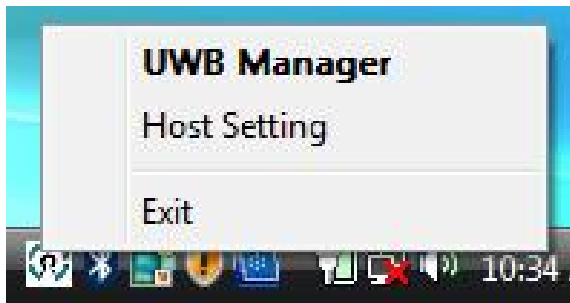
1. Both of **Wireless USB Host & Wireless USB Device** driver installation complete is necessary before you start to make cable association.
2. Get started by **plugging** your **Wireless USB host adapter** into an available USB or Expresscard/34 port your computer or notebook first and then **Power on** your Wireless USB device after.
3. Using a **USB Type A to Mini B cable**, connect the wireless device to the computer.
4. When the **Wireless USB Cable Association** screen prompted as below, please Click on **Accept Association** and **OK** for **Association successful**.



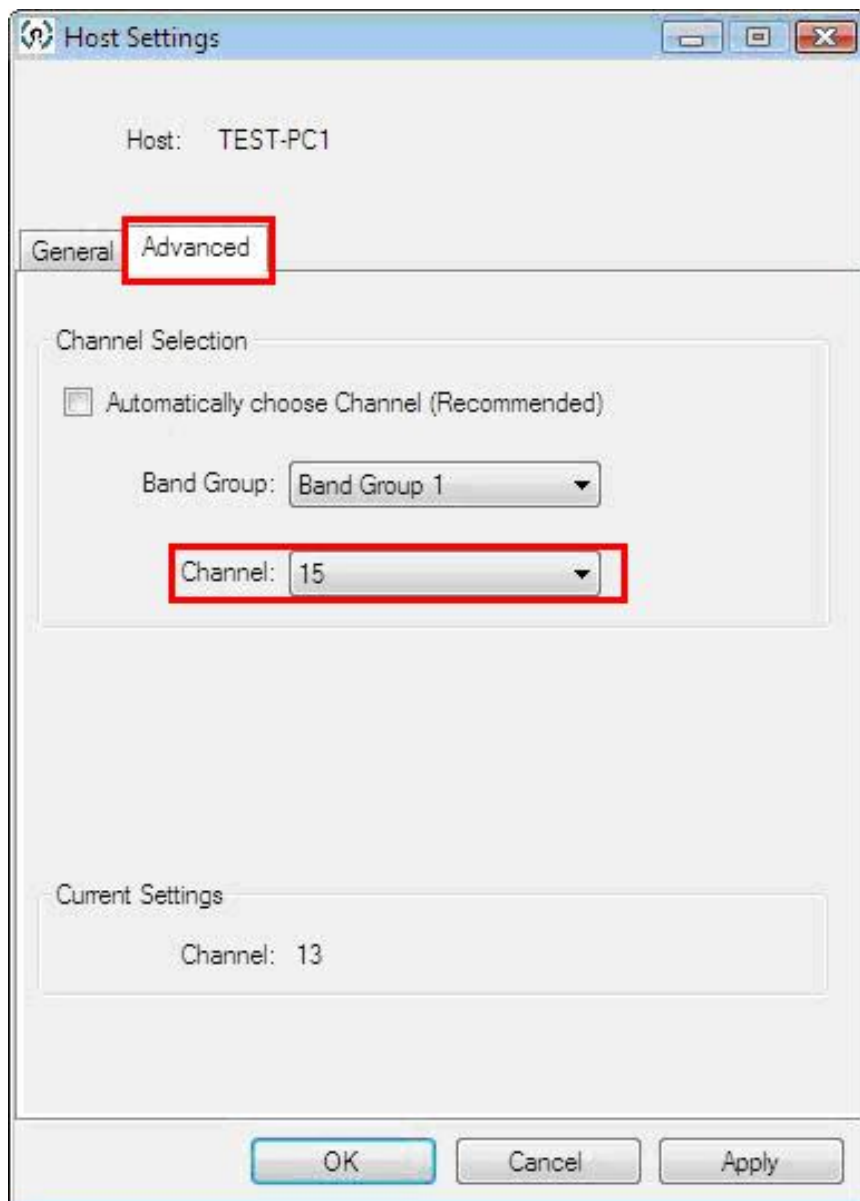
5. **Remove the USB Cable** on you Wireless USB device and you may find the **Wireless USB Manager** color in white, it means the status of device recognized and connected.



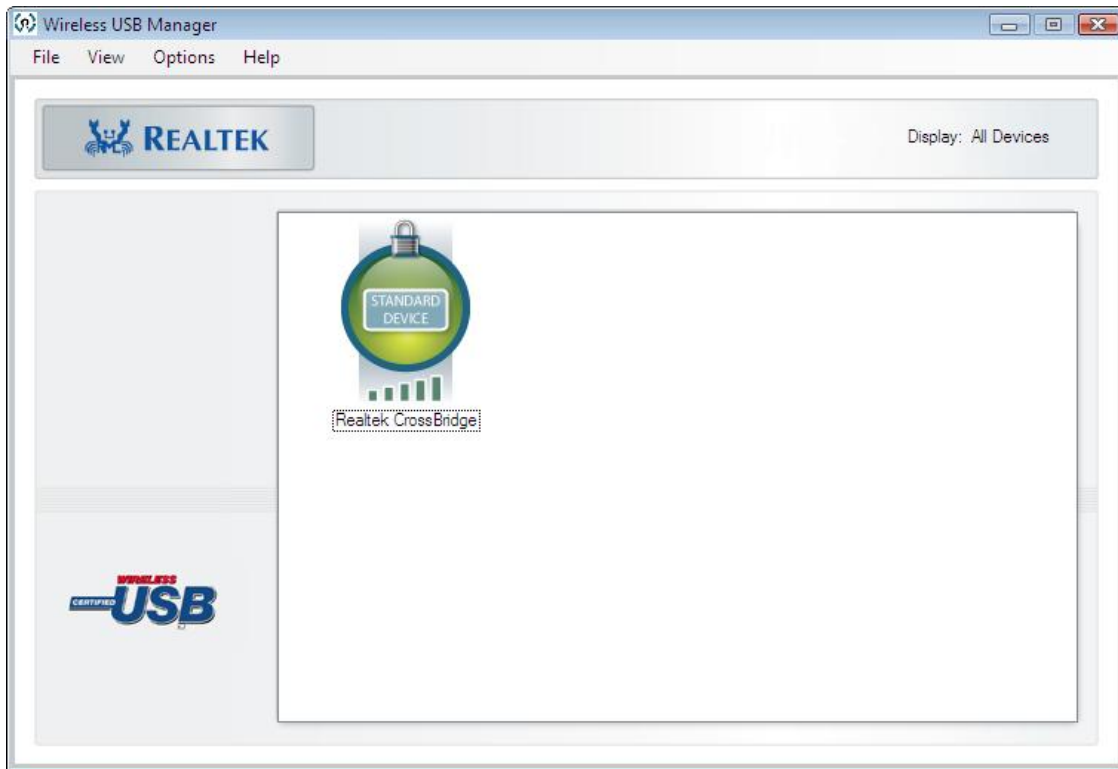
6. Right-click **Wireless USB Manager** and select **UWB Manager / Host Settings**.



7. Select 「**Advanced**」 and setting the **Channel** at **15**. (The step will only necessary when Wireless host adapter is Wireless USB Dongle in Europe version only).



8. Return to **Wireless USB Manager** and select **Open Wireless USB Manager**. The icon in **Green** represents association successful, and now you may start to enjoy using your device wirelessly.



**Actual strings depend on your operation system. These screen shots are from Windows Vista 32-bit and might vary slightly for each operation system.*

***Actual strings depend on your Wireless USB Host adapter. These screen shots above are from Wireless USB Dongle and might vary slightly for Wireless USB Expresscard..*

3. Specifications

ITEM	Description
Interface	<ul style="list-style-type: none"> ■ Upstream link : Wireless USB ■ Downstream link : USB 2.0 ■ Power: DC power jack
Antenna	Dipole Antenna
Power Mode	Self-powered (only)
Power Adapter	Wireless 1-Port Hub : Input: AC 100-240V Output: DC 5V / 1A
	Wireless 4-Port Hub : Input: AC 100-240V Output: DC 5V / 2.5A
Power Consumptions	Wireless 1-Port Hub : <ul style="list-style-type: none"> ■ Operating Power : 300 mA ■ Suspend Mode Power :180mA
	Wireless 4-Port Hub : <ul style="list-style-type: none"> ■ Operating Power : 330 mA ■ Suspend Mode Power :180mA
PHY data rate	Support all WiMedia data rates from 53.3Mbps to 480Mbps
PHY compliance	WiMedia 1.0 MAC & 1.1 PHY compliant & Support for 1.2 PHY

Frequency range	3.1GHz to 4.8GHz ; 6.336~7.920 GHz UWB PHY Supports Band Groups 1&3.
RF modulation type	Compliant to WiMedia MultiBand OFDM PHY Technical Specification Release 1.1
LED Ports	Wireless 1-Port Hub : <ul style="list-style-type: none"> ■ One red LED for power on indication ■ One blue LED for Wireless Link on indication
	Wireless 4-Port Hub : <ul style="list-style-type: none"> ■ One red LED for power on indication ■ One blue LED for Wireless Link on indication ■ Four green LEDs for 4 HUB input selection
Operational Range	Up to 10 meters (Ideal distance : 3 meters)
Operation System Support	Windows® XP SP2 and Vista™ 32/64-bit
Working Environment	<ul style="list-style-type: none"> ■ Operation temperature: 10 ~ 40 °C ■ Storage temperature: -10 ~ 60 °C
Dimensions	Wireless 1-Port Hub : 68.9(L) x 46.7(W) x 19.3(H) mm
	Wireless 4-Port Hub : 90(L) x 67.5 (W) x 17.3(H) mm
Weights	Wireless 1-Port Hub : 30 g
	Wireless 4-Port Hub : 90 g
Housing	Plastic
Certification	CE0560i

*Specifications are subject to change without further notice

4. Regulatory Compliance

CE

This equipment is in compliance with the requirements of the following regulations: EN 55 022: EMC Directive 2004/108/EC (EN55022/EN55024)

WEEE Information

For EU (European Union) member users:

According to the WEEE (Waste electrical and electronic equipment) Directive, do not dispose of this product as household waste or commercial waste. Waste electrical and electronic equipment should be appropriately collected and recycled as required by practices established for your country. For information on recycling of this product, please contact your local authorities, your household waste disposal service or the shop where you purchased the product.

