

The background features a vibrant orange color with abstract grey and white geometric shapes. A large grey circle is partially visible in the top left, with a white line curving through it. A large white shape, resembling a stylized '1' or a drop, is positioned in the center-right. The text is white and located in the upper right quadrant.

# Inmarsat Solutions

IsatPhone - LinkPhone - FleetPhone







## The System

Inmarsat is a system based on a constellation of geostationary satellites with global coverage, excluding the Poles.

Established in 1979 to provide satellite communications and safety systems for ships, in 2005 Inmarsat was turned into a publicly traded company at the Stock Exchange of London.

The initial project, pioneering the field of satellite telecommunications, evolved along the decades following the launch of several generations of satellites. The latest launched into orbit are the Inmarsat I-4 with 3G standard, used for IsatPhone, BGAN-Broadband Global Area Network, Fleet Broadband, FleetPhone and LinkPhone.



**IsatPhone:** mobile phones for voice service.

**FleetPhone and LinkPhone:** fix terminals for voice service.

**BGAN:** satellite service for voice and data transmission up to 650 kbps, with simultaneous access by means of a single portable terminal.

**FleetBroadband and FleetOne:** voice and data telecommunication services broadband on board ships.

### GEO (GEOSTATIONARY EARTH ORBIT) SATELLITES

These satellites maintain a circular equatorial orbit that follows the rotation of the Earth at an altitude of 36,000 km, thus always remaining over the same coverage area. The area covered by the satellite's signal (or rather, its "footprint") is quite large, and is equal to approximately 1/3 of the earth's surface. While GEO satellites are limited by their inability to provide service at the earth's Poles, their advantage lies in the extent of their footprints elsewhere.

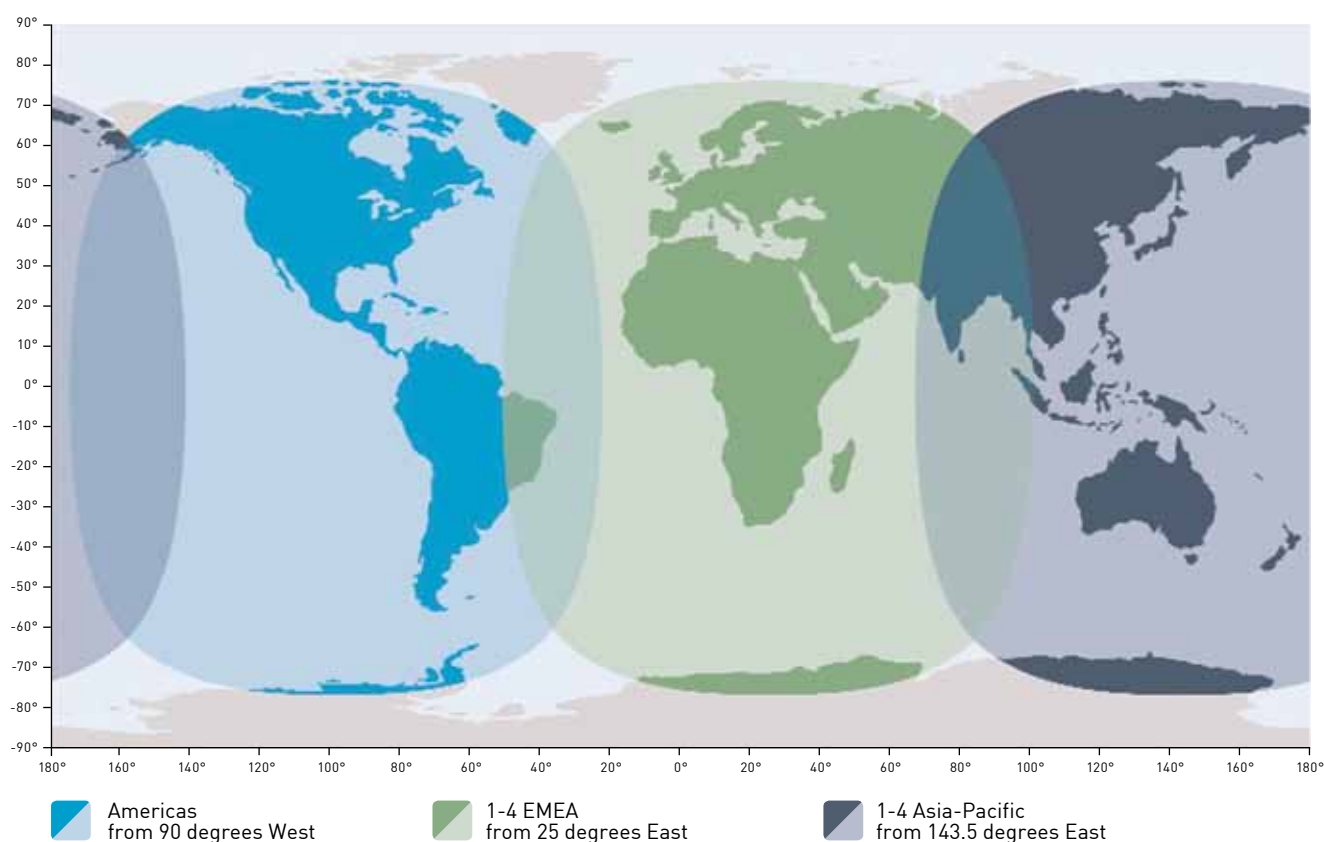
### IMPORTANT

- Satellite voice and data services must be used in compliance with the local regulations regarding the use of satellite equipment: in some countries, the use of satellite terminals may in fact be limited, subject to special licenses/authorizations or not permitted at all. It is always recommended to consult with the authorities of the country in which the terminal is to be used for the necessary requirements.
- As required by the current regulations, the installation and activation via SIM card of satellite equipment on board ships flying the Italian flag must only be carried out by individuals in possession of the necessary legal qualifications or individuals who have been approved by an Accounting Authority. As a third party provider of satellite devices, SIM cards and satellite services, Intermatica S.p.A. shall bear no responsibility for any problems that may arise due to the customer's failure to respect these regulations.



## The Coverage

Coverage includes the world between the 76° parallel North and the 76° parallel South.



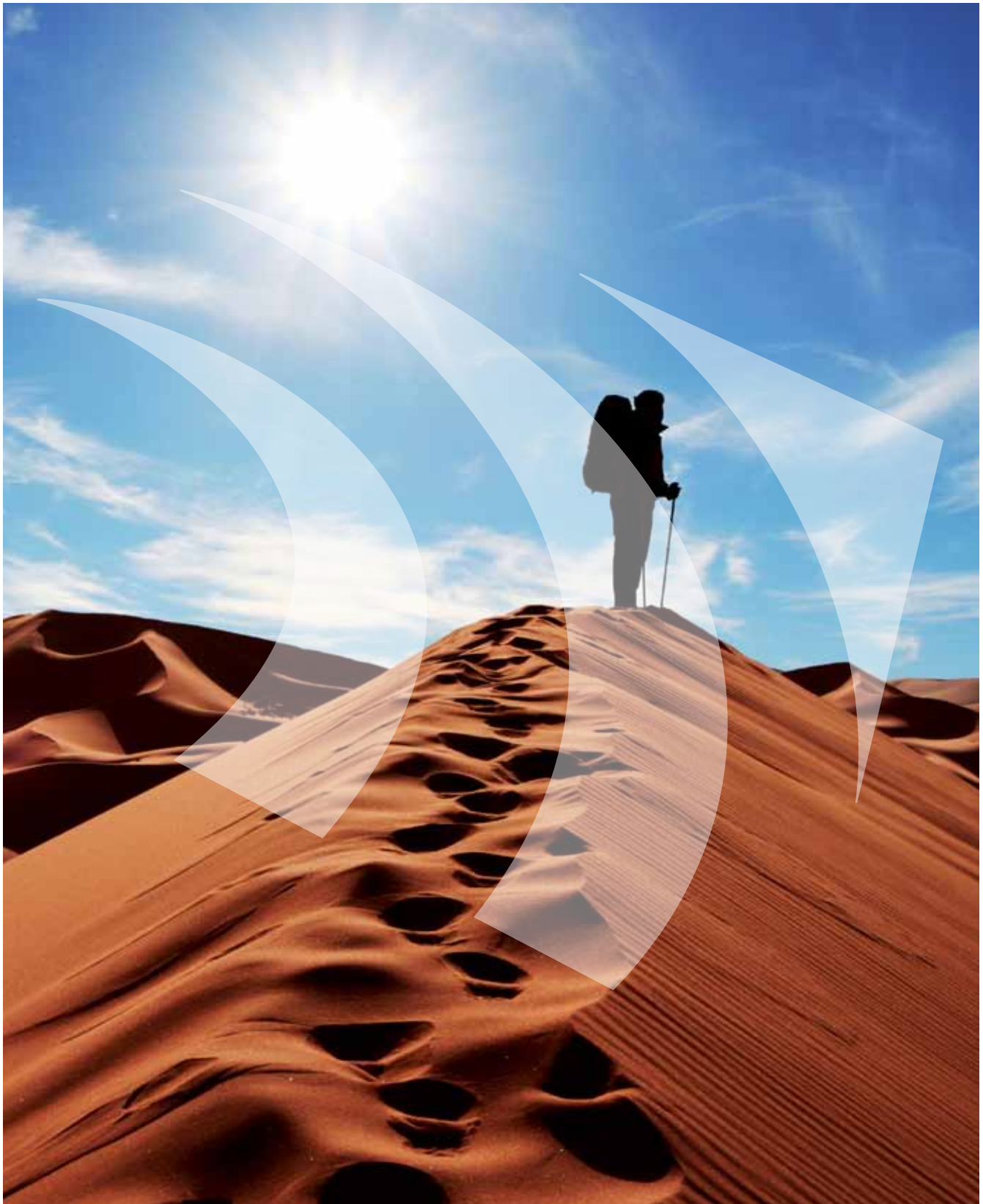
The service on the boundaries of the coverage area could be available discontinuously.

**Please note: the satellite services must be used in accordance with the local requirements regarding the use of satellite telephone devices.**

Intermatica's Customer Service - Ph. +39 06 85365 - [inmarsat@intermatica.it](mailto:inmarsat@intermatica.it) - [www.intermatica.it](http://www.intermatica.it)



## IsatPhone - LinkPhone - FleetPhone





Connecting the planet



## IsatPhone | Services



### VOICE

The IsatPhone Pro allows for calls to be placed at extremely affordable rates, which are often less than the roaming rates charged by GSM service providers. There are no charges for incoming calls.

#### Voice Services:

- high voice quality;
- can be used to place or receive calls worldwide, even to/from mobile and satellite phones.

#### Numbers that can be reached from anywhere in the World:

- IsatPhone prefix: +870 776\*\*\*\*\*

#### Network Services:

- voice mail;
- call waiting;
- call blocking;
- call alert;



### MESSAGES

The IsatPhone can send/receive standard SMS text messages of 160 characters, and even concentrated messages of up to 1,600 characters.

SMS text messages can be sent free of charge from the Intermatica website.

Some GSM operators may inhibit the sending/receiving of SMS text messages to/from satellite phones.



### GPS

The IsatPhone Pro terminal features built-in GPS for determining the terminal's geographical coordinates and sending them via SMS.

### UPDATING THE TERMINALS

**IMPORTANT:** at the time of purchase, verify that the IsatPhone Pro's packaging bears a sticker indicating a Firmware version of 5.3.0 or later.

This sticker is the only guarantee that the latest version of the Inmarsat firmware has been installed upon the terminal.

To check the latest version of the firmware or for more information, please contact Customer Service.



## IsatPhone | Mobile Phones

### ISATPHONE PRO

The first Inmarsat mobile satellite telephone, featuring a robust design, maximum ease of use and high-quality voice service.

The Unit, which features simple and intuitive menus, is dust-proof and water resistant (IP 54 standard) and boasts an excellent autonomy (talk time 8 hours, standby time 100 hours). Some of the terminal's other features include a colour display, Bluetooth and built-in GPS with the possibility of viewing and sending the terminal's location.

Intermatica offers special long-term rental formulas with traffic included.

**Dimensions:** 170x54x39 mm

**Weight:** 279 g

**Menu:** 8 languages, **Italian not included**

**Functionality:** Satellite only

**Satellite antenna:** rotating, 15 cm

**Display:** colour with high-luminosity

**Battery:** Lithium-ion, 3.7V

- › Talk time: up to 8 hours
- › Standby time: up to 100 hours

**Connectivity:** Bluetooth 2.0

**Connections:** headset, external antenna and Micro-USB

**Environmental protection rating:** IP 54

**Operating temperature:** from -20 °C to +55 °C

**Humidity:** from 0% to 95%

**Built-in GPS:** possibility of viewing the terminal's position and sending it via SMS or E-mail.

**Compatibility:** Windows XP Pro, Windows Vista SP1 and SP3 (not compatible with Mac)

**Other features:** built-in speaker phone, SMS sending/receiving, E-mail sending/receiving, battery level, clock, calendar, call lists, calculator, alarms.



### PACKAGE

- › IsatPhone Pro Mobile
- › Battery
- › Headset
- › Micro-USB cable
- › 10/-30V car battery charger
- › Travel charger with international plug adaptors
- › Installation CD
- › Quick Guide (8 languages)







## ISATPHONE 2

Characterized by a robust design and easy to use, the IsatPhone 2 is the Inmarsat second generation satellite mobile phone introducing several new features compared to the IsatPhone Pro.

Innovations include: the call waiting service even when the antenna is closed; standard certifications IK04 and IP65 for dust proof and water resistance and a brand new display even brighter and more resistant.

Thanks to the build-in GPS, it is possible to store and send the local position through SMS or email and moreover, thanks to the new Tracking function, it is possible to send it regularly. By pressing the Assistance Button, on the top part of the mobile, it is possible to send assistance request through the GPS position to a list of contacts.

The new software allows a faster connection to the satellite network and improves the autonomy of the phone: up to 160 hours in standby and 8 hours talking.

**Dimensions:** 169x75x29 mm

**Weight:** 316 gr, battery included

**Menu:** 8 languages, **Italian not provided**

**Functionality:** Satellite only

**Satellite antenna:** rotating, 15 cm

**Display:** colour with high-luminosity

**Battery:** Lithium-ion, 3.7 V

› Talk time: up to 8 hours

› Standby time: up to 10 hours

**Connectivity:** Bluetooth 2.0

**Connections:** head-phones, external antenna, Micro USB

**Environmental protection rating:** IP 65

**Operating temperature:** from -20° to +55°

**Humidity:** from 0% to 95%

**Built-in GPS:** possibility of displaying coordinates in order to send them via SMS/email or phone calls

**Compatibility:** all principals Window operating systems (incompatible with Mac)



## PACKAGE

- › IsatPhone 2 Mobile
- › Battery and headset
- › Cover
- › Micro USB cable
- › USB pen drive
- › Travel charger with international plug adaptors
- › Quick Guide (8 languages)





## IsatPhone | Marine Docking Station



The nautical kit allows for the use of the IsatPhone terminal on-board maritime vessels. The marine solution can even be used for vessel tracking and allows for the intermittent sending of an SMS text message containing the vessel's GPS location.

Furthermore, by pressing the button on the docking station, the terminal will send out an SMS alert containing the vessel's GPS position.

**NOTE: The antenna and cables are not included in the kit.**

### IsatPhone Pro

**Dimensions:** 270x189x101mm

**Power Supply:** 10-32V DC / 110-240V AC

**Operating temperature:** from -20 °C to +55 °C

**Environmental protection rating:** IP 54

**Connections:**

- › TNC port (for SAT antenna)
- › SMA port (for GPS antenna)
- › power connector
- › RJ11 connector (for analogue phone, cordless phone or PABX)
- › RJ9 outlet (for handset)
- › Mini USB connector (for PC connection)

### PACKAGE

- › Docking Station IsatPhone Pro
- › Power supply 110-240V AC mains power
- › Power cable 10-32V DC
- › Mounting bracket
- › External Handset
- › User manual in English



### IsatPhone 2

**Dimensions:** 196x243x99 mm

**Power Supply:** 10-32V DC / 110-240V AC

**Operating Temperature:** from -20°C to +55°C

**Environmental protection rating:** IP 54

**Connections:**

- › TNC connector (for SAT antenna)
- › SMA connector (for GPS antenna)
- › Power supply connector
- › Bluetooth
- › RJ11 connector (for analogue, cordless or PABX phones)
- › RJ9 connector (for headset)
- › Micro USB connector (for PC)

### PACKAGE

- › Docking Station IsatPhone 2
- › Power supply 110-240V AC mains power
- › Power cable 10-32V DC
- › Mounting bracket
- › External Handset
- › English User manual



**NOTE:** Specifics configuration for vehicular usage are available. The IsatPhone shown in the pictures are not included in the package.



## IsatPhone | Terrestrial Docking Station

The docking station for indoor use allows the usage of IsatPhone in closed environment, like homes or office buildings. The docking station can be connected to an external mobile (even cordless) or to PBX switchboards.

**NOTE:** The antenna and cables are not included in the kit.

### IsatPhone Pro

**Dimensions:** 270x189x101 mm

**Power Supply:** 10-32V DC / 110~240V AC

**Operating temperature:** from -20 °C to +55 °C

**Connections:**

- › TNC port (for SAT antenna)
- › SMA port (for GPS antenna)
- › power supply connector
- › RJ11 connector (for analogue phone, cordless phone or PABX)
- › RJ9 outlet (for handset)
- › Mini USB connector (for PC connection)

### PACKAGE

- › Docking Station IsatPhone Pro
- › Power supply 110-240V AC mains power
- › Power cable 10-32V DC
- › Mounting bracket
- › External Handset
- › English User manual



### IsatPhone 2

**Dimensions:** 196x243x99 mm

**Power Supply:** 10-32V DC / 110~240V AC

**Operating Temperature:** from -20°C to +55°C

**Connections:**

- › TNC connector (for SAT antenna)
- › SMA connector (for GPS antenna)
- › Power supply connector
- › Bluetooth
- › RJ11 connector (for analogue, cordless or PABX phones)
- › RJ9 connector (for headset)
- › Micro USB connector (for PC)

### PACKAGE

- › Docking Station IsatPhone 2
- › Power supply 110-240V AC mains power
- › Power cable 10-32V DC
- › Mounting bracket
- › External Handset
- › English User manual



**NOTE:** Specifics configuration for vehicular usage are available. The IsatPhone shown in the pictures are not included in the package.



### SPARE BATTERY

Same characteristics as that which is supplied with the telephones.

**IsatPhone Pro:** Lithium-ion, 3.7V

- › Talk time: up to 8 hours
- › Standby time: up to 100 hours



**IsatPhone 2:** Lithium-ion, 3.7V

- › Talk time: up to 8 hours
- › Standby time: up to 160 hours



### CAR BATTERY CHARGER

Recharges and powers the battery, both at 10V and at 30V, through a car cigarette lighter outlet.



### TRAVEL BATTERY CHARGER

This unit allows the terminal to be recharged using both 110V and 220V electrical networks, and comes complete with 4 interchangeable, international plug adapters.



### SOLAR BATTERY CHARGER

The solar battery charger allows for the Inmarsat telephones to be powered or recharged even where no electrical networks are available. It is comprised of a photovoltaic panel (available in 300 and 1.000 mAh versions), which allows the battery to be recharged by simply exposing the charger to sunlight. The car battery charger (sold separately) is required in order to use the solar battery charger.



### EXTERNAL ANTENNAS

#### Fixed Passive Directional Antenna

**Dimensions:** Ø 142 mm, h 231 mm

**Weight:** 0.9 kg

**Power supply:** not required

The antenna comes complete with a mounting bracket.



#### Active Marine Omnidirectional Antenna

**Dimensions:** Ø 142 mm, h 207 mm

**Weight:** 0.87 kg

**Power Supply:** provided by the docking station

The antenna comes complete with a mounting bracket.



#### Active Terrestrial Omnidirectional Antenna

**Dimensions:** Ø 146 mm; h 75 mm

**Weight:** 0.87 kg

**Power supply:** provided by the docking station

Available in the magnetic or pole-mounted versions.



### ANTENNA CABLE TYPES

**For Active Antenna:** 6 m, 13 m, 18,5 m, 31 m

**For Passive Antenna:** 10 m, 20 m

Other cable lengths of up to 100 metres are available upon request.

### CARRYING CASE

This shock-resistant carrying case features a dual-zip-pier closure and comes with a shoulder strap and clip.





Connecting the planet



## LinkPhone | Fixed Terminals



### TERRA 400

The Terra 400 is the Inmarsat satellite terminal that's ideal for fixed applications and for use in remote areas where reliable support services are required.

The terminal features an RJ11/POTS interface that's capable of connecting up to 5 analogue/cordless phones or interfacing with a PABX control unit, with the possibility of connecting cables of up to 600 metres in length.

The Terra 400 is easy to install and comes complete with a directional antenna that does not require a dedicated power supply.

#### CONTROL UNIT

**Dimensions:** 240x190x53 mm

**Weight:** 0.58 Kg

**Humidity:** 75%

**Temperature:** from -30 °C to +80 °C

**Operating temperature:** from -20 °C to +55 °C

**Power Supply:** 110-240V AC / 10-32V DC

**Environmental protection rating:** IP 53

**Connections:** RJ11

**Data Connections:** USB Mini B

**Usage type:** fixed

**Other characteristics include:** Led Indicators for registration/signal status, rear SIM Card slot.

#### DIRECTIONAL ANTENNA

**Dimensions:**

Ø 142 mm; h 231 mm

**Weight:** 0.9 Kg

**Temperature:**

from -40 °C to +70 °C

**Power Supply:**

not required



#### PACKAGE

- > Terra 400 Terminal
- > Fixed Passive Directional Antenna
- > 110-240V AC / 10-32V DC Power supply
- > USB cable
- > Quick start guide in English
- > User manual in English

NOTE: The package does not include the antenna cables, which must be ordered separately (see the table on page 67).







## TERRA 800

The Terra 800 is an Inmarsat satellite phone designed for a wide range of stationary applications, ranging from a dedicated telephone service to an emergency back-up phone system. The phone has a built-in Bluetooth device and a colour LCD display that allows for simple and practical use, and even allows for the sending/receiving of SMS text messages. Features include: a secondary SIM Card slot for use as an alternative to the internal slot, a USB data port, an address book, ring tones, built-in speaker phone, wall-mounting or desktop placement.

The Terra 800 is easy to install and comes complete with a directional antenna that does not require a dedicated power supply.

### CONTROL UNIT

**Dimensions:** 241x185x93 mm

**Weight:** 1.27 Kg

**Voice Connections:** analogue telephone, Bluetooth

**Display:** colour

**Humidity:** 75%

**Temperature:** from -30 °C to +80 °C

**Operating temperature:** from -20 °C to +55 °C

**Power Supply:** 110-240V AC / 10-32V DC

**Environmental protection rating:** IP 54

**Connections:** RJ11

**Data Connections:** USB Mini B

### DIRECTIONAL ANTENNA

**Dimensions:**

Ø 142 mm; h 231 mm

**Weight:** 0.9 Kg

**Temperature:**

from -40 °C to +70 °C

**Power Supply:**

not required



### PACKAGE

- › Terra 800 Terminal
- › Fixed Passive Directional Antenna
- › Fastening supports
- › Micro-telephone
- › 110-240V AC / 15V DC (Output) Power supply
- › 10 - 32V DC Power supply
- › USB cable
- › 2 m safety wiring
- › Plate for wall mounting
- › User manual in English
- › Quick start guide in English

NOTE: The package does not include the antenna cables, which must be ordered separately (see the table on page 67).





Connecting the planet



## FleetPhone | Fixed Marine Terminals

### OCEANA 400

The Oceana 400 is an Inmarsat satellite terminal that's designed for marine use and offers simple and reliable voice and data communications. The terminal features an intelligent RJ11/POTS interface that's capable of connecting up to 5 analogue/cordless phones or interfacing with a PABX control unit. The Oceana 400 can be easily installed and comes equipped with an amplified omnidirectional marine antenna. The unit even features an environmental protection rating of IP53.

The FleetPhone Oceana 400 terminal uses dedicated SIM Cards: for pricing, please contact Intermatica's Customer Service.

#### CONTROL UNIT

**Dimensions:** 240x190x53 mm

**Weight:** 0.58 Kg

**Humidity:** 75%

**Temperature:** from -30 °C to +80 °C

**Operating temperature:** from -20 °C to +55 °C

**Power Supply:** 110-240V AC / 10-32V DC

**Environmental protection rating:** IP 53

**Connections:** RJ11

**Data Connections:** USB Mini B

**Usage type:** fixed

**Other characteristics include:** Led Indicators for registration/signal status, rear SIM Card slot.

#### ACTIVE MARINE ANTENNA

**Dimensions:** Ø 142 mm; h 207 mm

**Weight:** 0.9 Kg

**Temperature:** from -40 °C to +70 °C

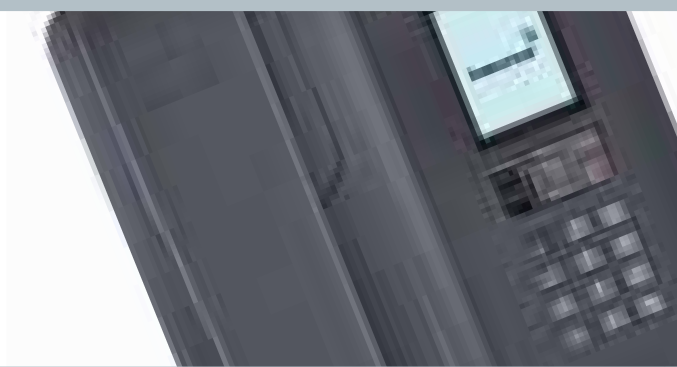
**Power Supply:** provided by the Oceana 400

#### PACKAGE

- › Oceana 400 Terminal
- › Active Omnidirectional Marine Antenna
- › 110-240V AC / 15V DC (Output) Power supply
- › 140 - 32V DC Power supply
- › USB cable
- › User manual in English
- › Quick start guide in English

NOTE: The package does not include the antenna cables, which must be ordered separately (see the table on page 67).





## OCEANA 800

The Oceana 800 is a satellite telephone that's ideal for marine applications. The terminal is capable of tracking the vessel's location by sending its GSP location via SMS: the SMS messages can be sent manually by pressing a button or else automatically at regular intervals. The Oceana 800 features built-in Bluetooth and a colour LCD display that allows for simple and practical use, and even allows for the sending/receiving of SMS text messages.

Features include: a secondary SIM Card slot for use as an alternative to the internal slot, a USB Data port, an address book, ring tones, built-in speaker phone, wall-mounting or desktop placement.

The Oceana 800 can be easily installed on board and comes equipped with an amplified omnidirectional marine antenna.

The FleetPhone Oceana 800 terminal uses dedicated SIM Cards: for pricing, please contact Intermatica's Customer Service.

### CONTROL UNIT

**Dimensions:** 241x185x93 mm

**Weight:** 1.27 Kg

**Voice Connections:** analogue telephone, Bluetooth

**Display:** colour

**Humidity:** 95%

**Temperature:** from -30 °C to +80 °C

**Operating temperature:** from -20 °C to +55 °C

**Power Supply:** 110-240V AC / 10-32V DC

**Environmental protection rating:** IP 54

**Connections:** RJ11

**Data Connections:** USB Mini B

### PACKAGE

- › Oceana 800 Terminal
- › Active Omnidirectional Marine Antenna
- › Fastening supports
- › Micro-telephone
- › 110-240V AC / 15V DC (Output) Power supply
- › 10 - 32V DC Power supply
- › USB cable
- › 2 m of safety wiring
- › Plate for wall mounting
- › User manual in English
- › Quick start guide in English

NOTE: The package does not include the antenna cables, which must be ordered separately (see the table on page 67).



### ACTIVE MARINE ANTENNA

**Dimensions:** Ø 142 mm; h 207 mm

**Weight:** 0.87 Kg

**Temperature:** from -40 °C to +70 °C

**Power Supply:** provided by the Oceana 800



Connecting the planet



## IsatPhone - LinkPhone | Subscription

There are two available subscription profiles, **Standard** and **Pro**. The monthly fee for the Standard profile includes 10-minutes of calling, while that for the Pro profile includes 60 minutes of calling. These minutes can only be used during the month in question to place calls to landlines, mobile phones and voice mail boxes. The voice calling price list for "Other Satellite Systems" is the same for both profiles.

Other "**SCAP**" (Shared Corporate Allowance Package) rate profiles or profiles including terminals are available upon request.

Basic Services	Standard	Pro
Activation Fee	NO	NO
Advance Monthly Fee	\$ 50.00	\$ 62.30
Minimum Contract Period	3 months	12 month
Voice - minutes included - excl. calls placed to "Other Satellite Systems"	10 minutes	60 minutes
Calls to fixed telephone networks – PSTN worldwide	\$ 0.89/min	\$ 0.80/min
Calls to mobile telephone networks worldwide	\$ 1.07/min	\$ 0.98/min
Calls to BGAN/FBB/SBB - voice mail boxes	\$ 0.89/min	\$ 0.80/min
Calls to IsatPhone phones	\$ 1.16/min	\$ 1.16/min
Security Deposit	€ 300.00*	€ 300.00*
<i>Monthly usage invoicing with payment by bank SDD (Sepa Direct Debit).</i>		

SMS sending cost: USD 0.45

## VOICE CALLING TO OTHER SATELLITE SYSTEMS

Description	Rate per minute
Calls to Inmarsat B	\$ 3.03
Calls to Inmarsat M	\$ 2.58
Calls to Inmarsat Mini - M/GAN/Fleet/Swift	\$ 2.23
Calls to Inmarsat Aero	\$ 4.36
Calls to Iridium	\$ 9.79
Calls to Globalstar	\$ 7.12
Calls to Thuraya	\$ 4.45
Calls to other satellite - MSS Carriers	\$ 6.14

The rates indicated do not include VAT, and are expressed in \$ – US Dollars; monthly billing will be expressed in Euros using the Bank of Italy's official average exchange rate for the month in question.

\* The Security Deposit is a guarantee on traffic and may vary in cases of elevated volumes of traffic. The Security Deposit will be reimbursed upon the termination of the contract and after the final bill has been paid. VAT is not applied to the Security Deposit.

**Voice calling rates:** charged every 15 seconds with a minimum charge of 15 seconds.

NOTE: Inmarsat SIM cards do not permit the calling of any national numbers starting with 1, 4, 7 and 8 (i.e. Emergency services, Toll Free numbers, Customer Service numbers, etc.). In order to call Emergency numbers, the geographic reference number must be used (i.e. 06XXXX. 02XXXX). It is not possible to send or receive SMS text messages to or from mobile phones for which Vodafone Italia is the service provider. Some GSM operators may inhibit the sending/receiving of SMS text messages to/from satellite phones.

Intermatica's Customer Service - Ph. +39 06 85365 - [inmarsat@intermatica.it](mailto:inmarsat@intermatica.it) - [www.intermatica.it](http://www.intermatica.it)



## IsatPhone - LinkPhone | Prepaid

The prepaid SIM Card has a minimum validity of 30 days, which can be increased by recharging. The SIM Card requires no activation fee, and only requires recharging. Any remaining credit will not be reimbursed in the event that the Customer should withdraw from the contract.

### VOICE

Description	Units per minute
Calls to landlines – PSTN worldwide	1.3
Calls to mobile telephone networks worldwide	1.3
Calls to BGAN/FBB/SBB/Voice Mail Boxes	1.3
Calls to IsatPhone	1.3
Calls to Inmarsat B	3.4
Calls to Inmarsat M	2.9
Calls to Inmarsat Mini - M/GAN/Fleet/Swift	2.5
Calls to Inmarsat Aero	4.9
Calls to Iridium	11.0
Calls to Globalstar	8.0
Calls to Thuraya	5.0
Calls to other satellite - MSS Carriers	6.9

**SMS sending cost:** 0.5 Units

**Data Calls 2.4 kbps:** same rates as voice calling

**Voice calling rates:** charged every 15 seconds with a minimum charge of 30 seconds.

### RECHARGES

Description	Minutes to landlines and mobile phones	Validity	Retail Price VAT excluded
Recharge 25 Units	19	30 days	€ 20.00
Recharge 50 Units	38	90 days	€ 39.00
Recharge 100 Units	76	180 days	€ 76.00
Recharge 250 Units	192	180 days	€ 184.00
Recharge 500 Units	384	365 days	€ 361.00
Recharge 1,000 Units	769	365 days	€ 719.00
Recharge 2,500 Units	1.923	365 days	€ 1,800.00
Recharge 5,000 Units	3.846	365 days	€ 3,600.00

*The prices shown do not include VAT.*

NOTE: Inmarsat SIM cards do not permit the calling of any national numbers starting with 1, 4, 7 and 8 (i.e. Emergency services, Toll Free numbers, Customer Service numbers, etc.). In order to call Emergency numbers, the geographic reference number must be used (i.e. 06XXXX. 02XXXX). It is not possible to send or receive SMS text messages to or from mobile phones for which Vodafone Italia is the service provider. Some GSM operators may inhibit the sending/receiving of SMS text messages to/from satellite phones.





## How to recharge Prepaid SIM Cards

Inmarsat Prepaid SIM Cards can be recharged in two ways:

- › **Intermatica Points of Sale:** Inmarsat recharges can be purchased at any one of the network's 300 Points of Sale throughout the country; to locate the point of sale nearest you, please visit the MobileLine/Punti Vendita section of the website [www.intermatica.it](http://www.intermatica.it);
- › **E-commerce:** through the [www.intermatica-shop.it](http://www.intermatica-shop.it) with payment through Paypal and credit cards;
- › **PiùRicarica:** available for purchase at **Lottomatica Italia Servizi points of sale** throughout the country; to locate the Point of Sale nearest you, please visit the Points of Sale section of the website [www.piuricarica.it](http://www.piuricarica.it).

### WHAT IS PIU'RICARICA?

**PiùRicarica** is a prepaid card for the satellite services offered by Intermatica. The card is electronically printed on a receipt using the POS devices (similar to those used for paying with credit cards/debit cards) found in all Lottomatica Italia Servizi Points of Sale.

**Warning:** The PiùRicarica card **is not an Inmarsat recharge PIN code**, but is rather a PIN code with which the service can be purchased.

The receipt contains:

- › the PIN code;
- › the Customer Service number;
- › the Serial Number to be provided to Customer Service in the event that any problems should arise.

In order to recharge Inmarsat SIM cards, the **PiùRicarica** card must only be purchased **in the amounts of € 50, € 100 and € 150**.

Recharges can be purchased via the website [www.piuricarica.it](http://www.piuricarica.it) or else by calling 02 89725.

**PiùRicarica** card is valid for 365 days from the date of its first use.

NOTE: the cost of an Inmarsat Recharge with PiùRicarica is greater than the cost of a recharge purchased at an Intermatica point of sale.

For more information, please visit the website [www.piuricarica.it](http://www.piuricarica.it) or contact Intermatica's Customer Service.



In partnership with

**LOTTOMATICA**  
*italia*servizi

ALL THE SERVICES YOU'RE LOOKING FOR WITHIN REACH.

- › This catalogue was last updated on 25 November 2014: the latest version is available on the website [www.intermatica.it](http://www.intermatica.it), along with any subsequent updates and additions.
- › Intermatica S.p.A. reserves the right to modify and update the values and specifications at any time without notice, and assumes no responsibility for any errors, inaccuracies and/or omissions.
- › The brands Intermatica - global solution carrier, MobileLine, PremiumLine, WireLine, Safe&SecLine, PiùRicarica, TwinNumber and InSAT are registered and owned by Intermatica S.p.A. All other brands, images and products are the property of their respective owners.
- › This document may not be reproduced, whether in whole or in part, without written authorization from Intermatica S.p.A.

Reproduction Forbidden - © Intermatica S.p.A. – November 2014



Intermatica S.p.A.  
Via G. Donizetti, 7  
00198 Rome - Italy

ph. +39 06 85361  
fax +39 06 85301068  
[www.intermatica.it](http://www.intermatica.it)

**Customer Service**  
**ph. +39 06 85365**  
**[mobileline@intermatica.it](mailto:mobileline@intermatica.it)**