

# WINAUTO



(044)361-05-06

ICQ:495-089-192

(067)469-02-12

ICQ:613-211-859

(099)048-99-03

(093)672-77-76

## User's Manual

Car DVR BlackVue DR400G-HD II with GPS module

In the online store Winauto you also can buy [car DVR BlackVue DR400G-HD II](http://winauto.ua/car-DVR-BlackVue-DR400G-HD-II). Delivery in Kyiv and throughout Ukraine with payment upon receipt!

[winauto.ua](http://winauto.ua)



- Archive - Audio, video - Sound and Components - Car Safety and security - Car DVRs, cameras, parking - Car Goods - Automotive Lighting - Tweak - Car Chemicals and Power Supply - Sale -



DR400G-HD

**BLACKVUE**

User manual

Ver 1.40



**PITTASOFT**

[www.pittasoft.com](http://www.pittasoft.com)

winauto.ua  
BLACKVUE

## Contents

---



<b>Getting Ready</b>	2	Before Using This User Manual
	3	Safety Instructions
	5	BlackVue Features
	6	Checking the BlackVue Package Content
	7	Checking the main body of the BlackVue
<b>Using the BlackVue</b>	8	Installing the BlackVue
	12	Recording
	14	Playing a Recorded File
<b>BlackVue Software</b>	17	Running BlackVue Software
	18	The Screen Organization
	19	Playing a Recorded File
	23	Saving as an Image File/Printing
	24	Configuring Your BlackVue Set-up
<b>Other Information</b>	30	Installing the BlackVue Software
	31	Upgrading the Firmware
	32	Product Specifications



Thank you for purchasing Pittasoft's BlackVue. This product is a vehicle drive recorder.

- ▶ Make sure to read this manual thoroughly in order to use the BlackVue correctly.
- ▶ Pittasoft will continue to add new functions and enhancements and apply new technologies to this product. Any information and specifications contained in this manual can be changed without prior notice to users.
- ▶ The screenshots and figures presented in this manual may differ from the actual appearances of the product.

## Conventions

Icon	Name	Meaning
	Caution	Indicates that the accompanying function may not operate or be disabled.
	Note	Indicates a tip or supplementary description to help you operate the accompanying function.

## Warranty

- ▶ Pittasoft co., Ltd shall not be held responsible for any accidental loss or damage to the product due to misuse by the user.
- ▶ This product is designed to record/store the scene of a vehicle accident. However, it does not guarantee that it is an exact recording of all accidents. A minor impact that does not trigger the impact sensor may fail to record an event scene.
- ▶ This product is a device that assists you to work out the circumstances of the accident. Pittasoft co., Ltd shall not be held responsible for any damage or loss (financial, business or indirect) occurring from an accident.

The following instructions are given to ensure your safety and prevent the loss of property. Read them thoroughly and use the product correctly.

- ⚠ Do not disassemble, repair, or remodel the product.

This may result in electrical shock, fire or damage to the product. Contact a service center when your product needs to be repaired. Your warranty will be voided if you have disassembled, repaired, or remodeled the product yourself.

- ⚠ When cleaning the product, do not spray water directly onto the main body of the product. Be careful that water does not enter the product and that it is not wet. This may result in electric shock, fire or a product malfunction.

- ⚠ Do not spray cleaner directly onto the surface of the product. This may result in discoloration or cracks and may cause a product malfunction.

- ⚠ Do not impart any force to the product. Be careful that no foreign material enters the product. This may result in a product malfunction.

- ⚠ Never operate the product while you are driving. You may be distracted, resulting in a car accident. Make sure to operate the product after stopping your car in a safe location.

- ⚠ Do not install the product in a location that hinders your driving or visibility. This may result in an accident.

- ⚠ The recorded scenes may be displayed faintly or distorted if the front window of your car is tinted excessively.

- ⚠ The optimal temperature range for guaranteed quality is between 0°C and 50°C. In the mid-summer or winter seasons, the video quality may deteriorate a little.

- ⚠ This product uses a camera. The quality of the recorded scenes may be degraded in extreme situations, such as when the brightness changes rapidly, when entering or exiting a tunnel, or when the light is too strong at high noon, or when there is no light source at midnight.

- ⚠ If the power to the product is disconnected due to a big accident, no scenes will be recorded.

### ⚠ Precautions for Using GPS

- ▶ Poor GPS signal reception does not affect the video recording performance. The coordinates and travel speed information may be unavailable, but video recording is activated immediately.
- ▶ Maintain the ambient temperature to within the recommended range. The ideal ambient temperature range for the GPS operation is between 0°C and 50°C. In summer or winter, the GPS signal reception may become unstable or it may take longer to establish a satellite connection.
- ▶ The GPS requires some time (1 to 5 minutes) to determine its current location when the unit is turned on for the first time or after an extended period of non-use (3 days or more).
- ▶ Avoiding GPS signal interference and re-check the GPS signal strength..
  - If an object is placed on top of the GPS model.
  - If a metallic tinting film has been applied to the vehicle's windshield.
  - If there are electromagnetic interference-generating devices inside the vehicle. (Certain types of remote startup and alarm systems and MP3/CD players)
  - If other GPS units are in use.
  - If the weather is cloudy.
  - If you are driving underneath or through an overpass, inside a tunnel or underground parking facility, in an area with a high concentration of large building structures, near an electrical power plant, near a military base, or near a broadcasting signal tower.

### ⚠ Caution When Installing the BlackVue

- ▶ Installing or operating the product while you are driving may cause an accident. Stop your car at a safe location and install or operate the product.
- ▶ If you smell any strange smells or the cigarette jack emits smoke, stop using the product and contact your local product distributor.
- ▶ Dust in the cigarette jack may cause excessive heat or fire. Clean it periodically.
- ▶ Frequently check whether the main body of the product is installed securely. The BlackVue may fall due to vibrations and result in personal injury or damage to the product.
- ▶ Pittasoft is not liable for any product damage or personal injuries that occur due to an accident or carelessness.

## Getting Ready BlackVue Features



### High-definition Video

The product is equipped with a dedicated IR lens that supports megapixels, which contributes to the reproduction of a sharp and natural image in Full HD (1920x1080@30fps).



### Smart phone / PC viewer

The product comes with a BlackVue-dedicated PC viewer and a smart phone specific (for the Android OS) application. It also provides various ways to check the video or change settings according to your preferences.



### Normal Recording

Records all circumstances while driving in high quality video.



### Parking Recording

Automatic parking mode is provided. If the movement of the vehicles is not detected for a pre-determined period of time (by G-sensor), the mode automatically switches to parking mode. If the movement of the vehicle continues, the parking mode is automatically cancelled. In the parking mode, recordings are made only when a movement is detected by the camera (motion detection) or an impact is imparted (G-sensor). (Created by Pittasoft's advanced security and safety technologies.)



### Event (G-Sensor) Recording

When an impact is imparted to your car while you are driving, the BlackVue's built-in G-sensor detects this automatically and starts recording the event.



### Sound Recording Function

Since the BlackVue has a built-in microphone, the surrounding sounds are also recorded when the video scenes are recorded.



### Video analysis using multiple external devices

You can record the video in the common MP4 formats and play it using multiple players.



### Stylish and Convenient Design

The soft and cylindrical design makes the inside of your car more stylish. In addition, you can easily adjust the angle of the camera and capture the inside of your car.



### Voice Guide Function

You can easily use the BlackVue as it guides you with voice instructions for the operations you should perform.

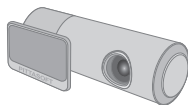


### GPS Data Recording

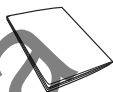
Powerful sensitive GPS that is embedded in the device records the vehicle's speed and coordinates whenever recording is in progress. In addition, it is possible to use the GPS data in conjunction with the BlackVue software and Google Maps to plot the vehicle's navigation path (when connected to the Internet).

Check the product and the accompanied accessories contained in the product package.

- ☑ If there is any problem with the accessories, contact your local product distributor.
- ☑ The accompanied accessories can be changed without prior notice.



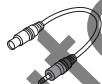
BlackVue



User manual



Video OUT Cable



Video IN Cable



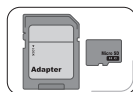
Power cable



Cable holders



Double-sided tape  
(A spare unit for mounting the BlackVue onto the vehicle.)



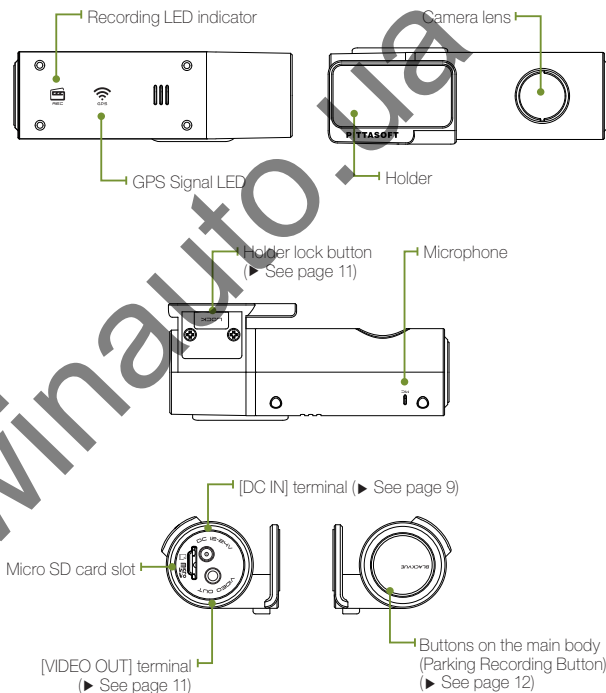
Micro SD card  
(Including the BlackVue Software)



Micro SD card reader

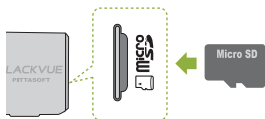
Check the main body of the BlackVue.

☑ For more information on the use of each part, refer to the relevant page.



### Inserting / Removing a Micro SD Card

1. Press the Micro SD card lightly and slide it into the BlackVue in the direction shown in the figure.
  - ✎ To remove the Micro SD card, press it lightly and it will eject.
  - ✎ Before you insert an SD card into the BlackVue, turn the BlackVue off.

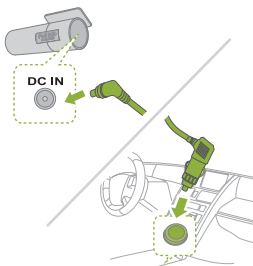
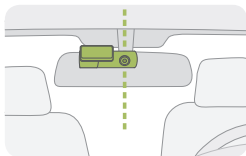
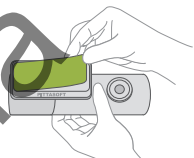


#### ▲ Caution When Using a Micro SD Card

- Insert/Remove the Micro SD card while the BlackVue is turned off. (Ensure that all the LEDs of the BlackVue are turned off.)
- Do not remove the Micro SD card while the BlackVue is reading or writing data. This may corrupt the data or result in a product malfunction.
- Check the data stored on the Micro SD card periodically to ensure that the product operates normally.
- Use a Micro SD card provided by Pittasoft. Using a card from other companies may result in data corruption or a product malfunction.
- The Micro SD card is an expendable item. Replace it with a new one if it has been used for an extended period of time.
- Make sure to back up important data to another storage medium. We do not provide a warranty for any corrupted data that occurs while using the product.

## Installing the BlackVue in a vehicle

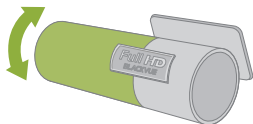
1. Stop the engine and remove the key from the ignition.
  - ✎ Install the BlackVue in a well-lit and safe location.
2. Insert a Micro SD card into the BlackVue.
  - ✎ For more information on using the Micro SD card, refer to page 8.
3. Attach the BlackVue to a windshield of your car using double-sided tape.
  - ✎ We recommend that you install the BlackVue behind the rear view mirror. The lens of BlackVue should be located on the center of the vehicle.
  - ✎ Install it in a location that does not hinder your visibility.
  - ✎ Wipe all foreign material and moisture from the surface to which the double-sided tape will be attached using a soft and dry cloth.
  - ✎ If the product is installed on a window hot wire, this may cause the hot wire to be damaged when removing the product later.
  - ✎ If the BlackVue happens to be removed from the holder, refer to page 11.
4. Connect the [DC IN] terminal of the BlackVue and the cigarette jack of your car using the power cable.
  - ✎ For parking mode, connecting the POWER MAGIC (a battery power controller) is recommended.
  - ✎ Use a multi power leads, in case BlackVue is used with other car device.





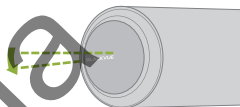
### 5. Tie the power cable.

- ☑ Use the provided cable holder, if necessary.



### 6. Adjust the position of the camera lens of the BlackVue.

- ☑ The BLACKVUE logo should be slightly further down than horizontal.
- ☑ Check the data saved during a test drive. Adjust the lens position, if necessary.
- ☑ If you connect a mobile video device (smart phone/navigation), you can adjust the angle of the lens viewing the video. (► See page 11.)

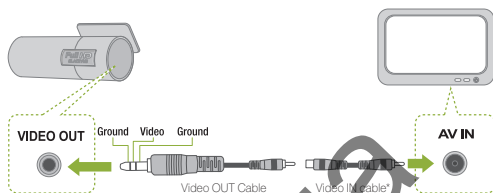


### 7. Start the engine. Check whether the BlackVue is installed correctly.

- ☑ When the BlackVue is installed correctly, its LED will turn on.

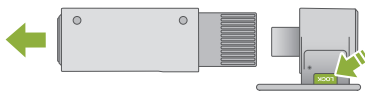


## Connecting the BlackVue to an AV Product



1. Connect the BlackVue's [VIDEO OUT] terminal to the AV unit using the Video OUT/IN cable (accessory).
  - ☑ You can view the real-time video of the BlackVue through the connected AV product.
  - ☑ You cannot play the files recorded by BlackVue.
  - ☑ If you use the [VIDEO OUT] port of BlackVue, the frame rate decreases.
  - ☑ However, some navigation systems are not compliant with the provided Video In\* cable. Refer to the user manual for the navigation system to check the compatibility with the provided Video In cable.

## Removing the BlackVue from the Holder



1. While pressing the [LOCK] button for the holder, pull the main body of the BlackVue as shown in the figure.
2. The main body of the BlackVue is easily removed from the holder.
  - ☑ Assembling it into the holder : Align the grooves of the main body of the BlackVue with those of the holder and slide the main body into the holder until you hear a click.

### Using the Normal Recording Function

Start the engine.

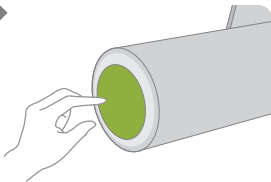
BlackVue turns on and starts the Normal Recording function. BlackVue records all the videos while the power is on.

- ✎ If you connect BlackVue with POWER MAGIC (a battery power controller), it is always on.
- ✎ If you select [Normal Record Off] in the [Normal Record] in the Set-up screen, this function will be disabled. (► See page 25)

### Using the Parking Recording Function

Using the Parking Recording Function [Auto Switching to Parking Mode] is set by default. (► See page 26)

- ✎ If the movement is not detected for 10 minutes (by G-sensor), it automatically switches to parking mode.
- ✎ If the movement is detected for 30 seconds in succession, the parking mode is automatically cancelled.



To immediately activate or deactivate the parking mode, press the BlackVue main body's button.

In the parking mode, recordings are made only when a motion is detected by the camera (motion detection) or an impact is imparted to your car (G-sensor).

- ⚠ For parking mode, connecting the power of the BlackVue to the POWER MAGIC (a battery power controller) is recommended.

#### Motion Detection Algorithms

- This technology is for camera to detect movements.
- The proprietary security solution technology of the IP security camera specialized company, PITTASOFT is adopted for motion detection.

## Using the Event Recording Function

When the vehicle is running or parked, if the BlackVue detects an impact over a pre-determined threshold, the video of the before and after is automatically recorded.

- ☑ Go to the setup screen and adjust the settings for [G-Sensor] under Sensitivity. (► See page 27). It is possible to configure different [G-Sensor] settings for the normal recording and parking recording functions.

### G-Sensor (3 axis acceleration sensor)

- BlackVue detects impact with the G-sensor and recording the video.
- G-sensor is 3-axis gravity acceleration sensor that detects an impact in X (forward and backward), Y (left and right) and Z axis (upward and downward).
- You can play the G-sensor information of the recorded file by using the BlackVue software.
- The G-sensor value measured by BlackVue cannot be used as an evidence for traffic accident.

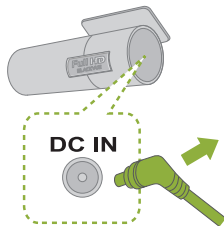
## Turning off the BlackVue

Stop the engine.

The BlackVue will turn off after about 5 seconds.

All LED indicators of the BlackVue will turn off.

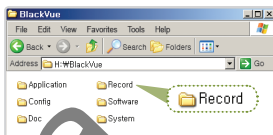
- ☑ When the POWER MAGIC (a battery power controller) is connected, separate the power cable connected to the BlackVue.



## Using the BlackVue Playing a Recorded File

BlackVue recordings are saved in MP4 format so that you can easily play the recorded files using a general video player (PC, smart phone or navigation) without file format conversion.

- BlackVue recording files are saved in the 'Record' folder of the SD card.

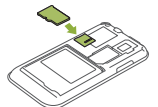


## Playing Recorded Files with a smart phone

### Downloading BlackVue applications

- Pittasoft provides useful BlackVue specific applications for your reference. User can use this feature only with smart-phone supporting the SD card section.
- Access Android Market → Search for BlackVue → Select an application → Download

- Turn off your BlackVue product and remove the SD card from it.
- Insert the SD card into your smart phone.
  - You can play the recorded video in a smart phone supporting the micro SD card.
- From the main menu on your smart phone, select the BlackVue application. The BlackVue viewer will be opened.
  - The video can be played using your smart phone's video player.
- Tap on a video clip. The video clip will be played.
  - If there are a number of files in the SD card, file loading may take some time.



## Playing Recorded Files with a Navigation

1. Insert the SD card into the SD card adaptor. Then insert the adaptor (with the SD card inserted) into the SD card reader.



2. Connect the SD card reader to the navigation system.



3. Tap a play-related icon and select the removable disk that contains the video clips.

4. Tap on a video clip. The video clip will be played.

☒ Playing a video clip may differ depending on the device model. For more information, refer to the user manual of the navigation system.

☒ If there are a number of files in the SD card, file loading may take some time.



### Playing Recorded Files with a PC

1. Insert the SD card into the SD card adaptor. Then insert the adaptor (with the SD card inserted) into the SD card reader.



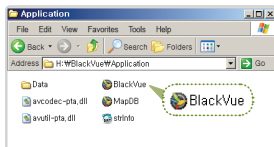
2. Connect the SD card reader to the PC.



3. Double-click the "BlackVue.exe" file in the "Applications" folder of the SD card. The BlackVue software will be launched.

4. Tap on a video clip to play it.

- ☒ For PC video player, you have to install H.264 video codec and AAC audio codec for normal playback.
- ☒ When you play the files on a PC, using BlackVue software is recommended.  
(▶ See page 17)



When playing a BlackVue recording file on a PC, use the BlackVue player software.

BlackVue software enables convenient playing and management of BlackVue recording files.

☒ You can use the BlackVue player directly without installing the program.

1. Insert the SD card into the SD card adaptor. Then insert the adaptor (with the SD card inserted) into the SD card reader.

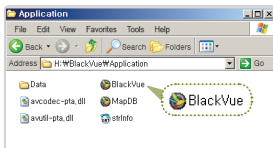


2. Connect the SD card reader to the PC.



3. Double-click the "BlackVue.exe" file in the "Application" folder of the SD card. BlackVue software runs.

☒ To install the BlackVue software onto the PC, refer to page 30.







### Types of Recorded Files

**N** : Indicates a Normal Recording file. This is shown in green in the timeline.

**E** : Indicates an Event Recording file. This is shown in amber in the timeline.

**P** : Indicates a Parking Recording file. This is shown in blue in the timeline.

### Play Control Buttons

**▶** : Plays the selected file.

**◀ / ▶** : Moves forward/backward by one frame.

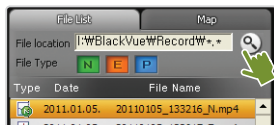
**■** : Stops the selected file.

**◀◀ / ▶▶** : Plays the previous/next file.

**⏸** : Pauses the selected file.

1. Click the [🔍 Browse] button and select the folder in which the file is located.

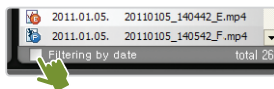
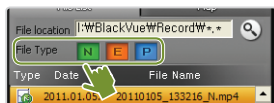
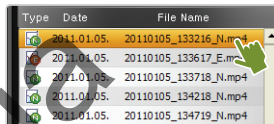
☒ The files contained in the selected folder are displayed in the list.



2. Double-click the file you want to play. (Alternatively, select the file and click the ▶ button.)

The selected file starts to be played.



- ☒ To view the video in full screen, double-click the playing screen. Press the ESC key to return to the basic playing screen size.
- ☒ Scroll mouse wheel to Zoom In/Out in Playing Screen View. (Min. 0.5X ~ Max. 2.0X)
- ☒ You can control the playing speed from 0.5x to 2.0x speed.
- ☒ To list only the files with the types you specify, select or deselect the buttons in the [Select Types] section. (All types are selected by default.)
- ☒ Select the checkbox in the date, the files of selected date in the Timeline appears in the list.



### The recorded file is MP4 format.

- BlackVue saves recorded files in the MP4 format. You can check the video clip with an MP4 -compliant video player or BlackVue-dedicated player.

### Adjusting the Screen

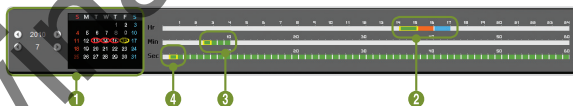
- ▶  (Full Screen button)  
Display the video in full screen.
- ▶  (Flip)  
Flips the display vertically.





### Using the timeline

By using the timeline, you can view the recordings for each hour of the selected date at a single glance. In addition, you can easily search/play a file for the hour you require.

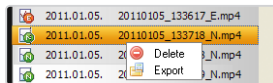
- ▶ ❶ Select the date. → ❷ Select the hour. (You can only identify the types of recorded files.) → ❸ Select the minutes. → ❹ Select the seconds. → View the recording made at the selected time.



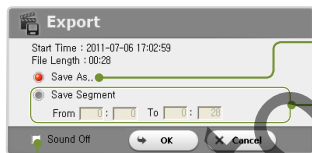
- ▶  Red circle: Indicates that there is at least one file recorded during the date.
- ▶  Yellow circle: Indicates the selected date.

## Deleting/Exporting the file

From the player file list, select a file and right-click it to display the context menu. Select Delete to delete the selected file or select Export to save it in a different location.



### Video export setting



Set the file name and save location and export the video file.

Only the selected section of the video is exported.

When a video file is exported, the audio is removed.

## Checking the Map

When playing back a recording file, select the Map tab. This plots the vehicle coordinate data from the GPS onto Google Maps.

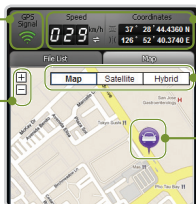
- ☒ To use the Google Maps service, first connect to the Internet.
- ☒ Only data from recording files that contain GPS data is displayed.

GPS Signal Strength

-Green: GPS Data Available  
-Red: GPS Data Not Available

Zoom In/Out

(Adjust using the mouse's scroll wheel)



Travel Speed and Coordinates

⇌ : Changes the speed display units.

Map Display Options

Vehicle Location

### Opening the MyWay Viewer






Press the  button. The MyWay Viewer appears.

The driving path appears on the map.






- Double-click the map. A video of the driving route near the clicked point is played.




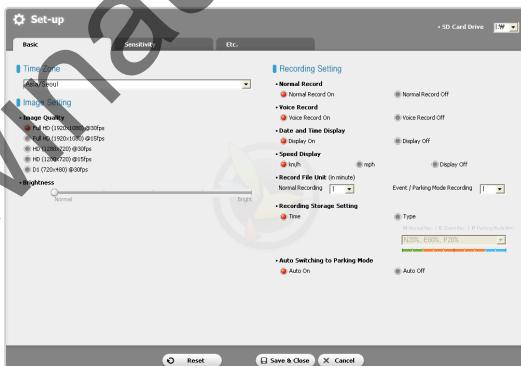
### Saving the Selected Screen as an Image File

1. Pause the file by clicking the  button while it is being played. Select the scene you want to save.
  -  To select the scene you want, select the seconds in the timeline or seek the scene by using the  /  buttons.
2. Click the  button. Check the path in which the file will be saved and then click the Save button.  
The selected scene is saved as an image (jpeg or bmp) file.

### Printing the Selected Screen

1. Pause the file by clicking the  button while it is being played. Select the scene you want to save.
  -  To select the scene you want, select the seconds in the timeline or seek the scene by using the  /  buttons.
2. Click the  button.  
The selected scene is printed.

1. Insert the micro SD card into the PC. (► See page 16)
2. Click the  button. The Set-up screen is displayed.
  - ☑ If the SD card (where the BlackVue firmware is installed) is not connected to the PC, you cannot configure the settings as intended.
3. Configure your BlackVue Set-up.
4. Click the [Save & Close] button.
  - ☑ If the settings are not saved on the Micro SD card, your configuration of the BlackVue Set-up will not be performed.
  - ☑ To reset the settings to their default values, click the [Reset] button.
5. Remove the micro SD card of your configuration from the PC and insert it into your BlackVue product.  
They are applied to the BlackVue automatically.



## Setting the Basic



### 1 Time Zone

Select the time zone where you are using the BlackVue. This setting is used for the time information for recorded files.

### 2 Image Setting

► **Image Quality** : Set the image quality for recorded files. The higher the image quality, the larger the file.

► **Brightness** : Controls the brightness of the recording.

#### ☒ Recording Times

The actual recording time in Continuous Recording mode may vary slightly from the information provided above.

Image Quality Memory Capacity	Full HD (30fps)	Full HD (15fps)	HD (30fps)	HD (15fps)	D1 (30fps)
16GB	4hrs 37mins	6hrs 54mins	6hrs 54mins	11hrs 29mins	17hrs 09mins
32GB	9hrs 24mins	13hrs 59mins	13hrs 59mins	23hrs 18mins	35hrs 48mins

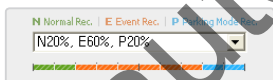
### 3 Recording Setting

#### ► Normal Record

- **Normal Record On** : Records all situations while you are driving.
- **Normal Record Off** : Records only the situations for Event Recording and Parking Recording (Parking mode only).



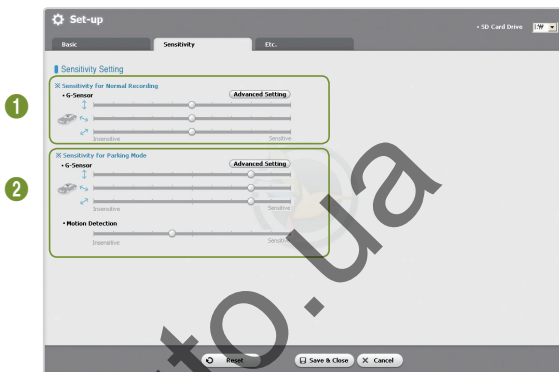
- ▶ **Voice Record** : Select whether to use the Voice Recording function.
- ▶ **Date and Time Display** : Adds the date and time to the bottom left of the recording.
- ▶ **Speed Display** : Adds the speed to the bottom left of the recording.
  - ☒ If [Display Off] selected, speed will not be displayed.
- ▶ **Record File Unit** : Sets the Recording File Unit when a file is saved.
- ▶ **Recording Storage Setting** : Storage Allocation: When the storage is full, the oldest file is automatically deleted to record a new video.
  - **Time** : When the storage is full, the oldest file is automatically deleted regardless of its type.
  - **Type** : You can allocate storage space to each file type separately. When the storage is full, a new video file is recorded after deleting the oldest file of the same type. Even in this mode the event file can be deleted, so please be careful.



### ⚠ If the event recording limit is full

- Event recording files are also deleted from the oldest one. Take care so that necessary files are not deleted. Backup those files onto another storage device.
- ▶ **Auto Switching to Parking Mode** : If no movement is detected by G-sensor for 10 minutes, the product automatically switches to parking mode. If the G-sensor detects the movement of the vehicles for at least 30 seconds, the product automatically switches to normal recording mode.
  - ☒ The time and function to switch to the parking mode may be affected by the level of the impact of the vehicle.

## Setting the sensitivity



### 1 Sensitivity for Normal Recording

Determines the sensitivity threshold of the G-sensor for the event recording function in permanent recording mode.

### 2 Sensitivity for Parking Mode

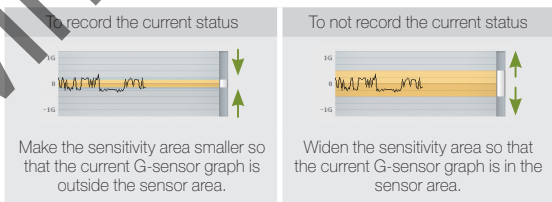
Determines the sensitivity thresholds of the G-sensor and the motion detector for the event recording function in parking mode.

### Advanced sensitivity setting

Click the Advanced button for each of the settings. You can configure the sensitivity while watching a recorded video.

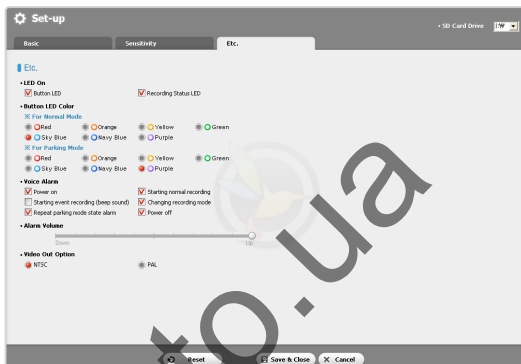


1. Open a recorded video (1). Play the video (2).
2. While watching the video, specify the sensitivity as appropriate. Move the control lever up or down to adjust the sensor area.(3)
  - The wider the sensor area, the less sensitive the sensor is; the narrower the sensor area, the more sensitive it is.



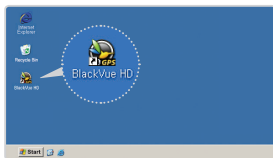
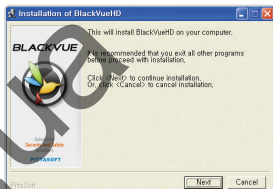
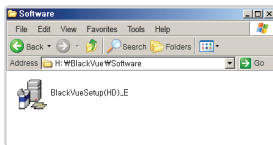
- ☒ Depending on the user-configured sensitivity, if an event to be recorded by the event recording function is detected, the border of the video play screen blinks.

## Other



- ▶ **LED On** : You can select an indicator to turn on or off.
- ▶ **Button LED Color** : You can change the color of the indicator.
- ▶ **Voice Alarm** : The BlackVue product plays voice messages during certain events. This option allows you to selectively enable/disable the voice messages.
- ▶ **Alarm Volume** : Allows you to adjust the volume of the voice messages.
- ▶ **Video Out Option** : You can select a video source to output if the video sources are connected.

1. Insert the micro SD card(accessory) into the PC. (► See page 16)
2. Double-click the 'BlackVueSetup(HD)\_E.exe' file on the Micro SD card.
3. Follow the directions presented by the Setup program until you finish the installation.
4. Check that a shortcut to the BlackVue Software is created on the Windows Desktop.
  - ☒ Double-click the shortcut to the BlackVue Software to run the program.



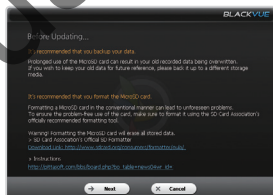
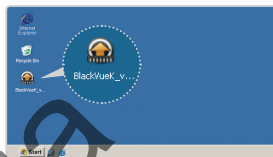
Firmware upgrade refers to upgrading the product by downloading a new version of firmware. By upgrading the firmware to the latest version, you can use BlackVue in better environment.

1. Insert the micro SD card into the PC.  
(► See page 16)

2. Go to the <http://eng.pittasoft.com> webpage and download the firmware upgrade file.

3. Double-click the firmware upgrade file. Perform upgrade according to the instructions on the screen.

- ☒ Upgrade the SD card to the new firmware.
- ☒ When the upgrade is complete, the BlackVue software is installed. If you don't want to install the software, press the Cancel button.



4. Insert the micro SD card containing updated firmware into the turned-off BlackVue.

5. Turn the BlackVue on. The BlackVue automatically updates the firmware.

⚠ Take care not to cut the power off while updating the firmware.

### ⚠ Formatting the Micro SD card

- It is recommended that you format the Micro SD card once a week.
- If the recorded video does not play smoothly, format the Micro SD card.
- To ensure the stable operation of the card, format the Micro SD card using the official program recommended by the SD card association. For more information about formatting, refer to the Pittasoft website (<http://eng.pittasoft.com>).
- Backup any important data stored on the Micro SD card to your PC.
- When formatting is complete, upgrade the firmware. If a Micro SD card without the basic file is connected to the main body, the Micro SD card is automatically initialized and the firmware is automatically installed on the Micro SD card.

Camera	CMOS sensor / 2,073,600 pixels
Resolution	FULL HD(1920x1080) / Max 30fps
Compression Format	H.264
Audio	AAC LC
View Angle	Diagonal: 120° / Horizontal: 98° / Vertical: 55°
Memory or Storage Device	Micro SD card (Maximum 32GB)
GPS	Built-in
Recording	Normal Recording, Event (G-Sensor) Recording, Parking Recording (Motion Detection Algorithms)
Video Output	Composite
Dimensions	Diameter: 32.0 mm (1.26 inch) Length: 102.8 mm (4.04 inch)
Weight	86 g
Power Supply	12V / 24V DC
Power Consumption	Max. 4W
Operation Temperature	-20°C ~ 60°C

### LED Status

Status	LED	REC	GPS	Button
Recording	Booting	Off	-	Normal blinking
	Normal	Orange blinking	-	-
	Event	Red normal blinking	-	-
	Parking	Green blinking	-	-
No SD card		Off	-	Fast blinking
Power off		Red/Green cross blinking	-	-
Storage shortage		Orange on		-
GPS	Transmitting	-	Green	
	Not Transmitting	-	-	

## Warranty

- The warranty of this product is 1 year from the purchase date.  
(The warranty period for accessories such as the battery and Micro SD card: 6 months)
- Pittasoft provides the following warranty for our product in accordance with the Consumer Dispute Resolution Criteria (announced by the Korean Fair Trade Commission). When a service is requested, Pittasoft or an authorized partner will provide the service.
- When a non-commercial product is used as a commercial product, the warranty period is reduced to 1/2 the original period.

Product Name (Model Name)		Serial No.	
Purchase Date	YY MM DD	Local Product Distributor	
Customer Information		Address / Phone	

Type of damages to consumers		Applied Warranty	
		Within the warranty period	After the warranty period
Performance or functional malfunctions that occur while using the product normally	When an important repair is required within 10 days of the purchase	Replace the product or refund the purchase price	Not applicable
	When an important repair is required for an replaced product within 10 days after a replacement	Refund the purchase price	Not applicable
	When the same failure occurs three or more times	Free repair	Repair with fee
	When the same failure occurs four or more times	Replace the product or refund the purchase price	Repair with fee
	When the company loses the product for which the consumer requested a repair	Replace the product or refund the purchase price	Refund the depreciated purchase price plus 10%
	When the repair cannot be done because the company does not have a part within the part retention period	Replace the product or refund the purchase price	Not applicable
	When the repair cannot be done even though there is a part for repair	Replace the product or refund the purchase price	Not applicable
When a failure occurs due to the fault of the consumer - A product failure or malfunction due to the incorrect handling by the user (a fall, impact, damage, unreasonable operations, etc.) or the incorrect use of the product - When a failure occurs because of the use of a component which is not specified by Pittasoft or a separately sold accessory - When a failure occurs because of a repair or modification by the consumer or a third party and not because of Pittasoft's service personnel - A product failure or damage due to the intention or fault of the consumer  Other cases - When a failure occurs due to a natural disaster - When the lifetime of an expendable part comes to an end		Repair with fee	Repair with fee

- This warranty is only valid in the country where the product is purchased.



# Online-store car audio and autogoods Winauto



N28189



GODO DESIGN



RoHS  
compliant

Pittasoft (Head Office)

Address	#1113, Newtcastle, 429-1, Gasan-dong, Geumcheon-gu, Seoul, 153-779, Korea		
Homepage	<a href="http://eng.pittasoft.com">http://eng.pittasoft.com</a>	Email	<a href="mailto:sales@pittasoft.com">sales@pittasoft.com</a>
CS	82-2-2626-8800(#2)	FAX	82-2-2626-8805