



Deliscript

USER MANUAL

for OpenType® Compatible Applications



Thank You

If you've just purchased Deliscript or are just thinking about it – *Thank You!* This manual for its usage in OpenType® compatible applications will help you to understand Deliscript's many possibilities, or it will guide you to successfully utilize its many unique features.

I designed and created Deliscript with a lot of very savvy technical assistance from Patrick Griffin of Canada Type in Toronto. A *huge Thank You* goes out to Patrick for all his tireless help in making this font a reality. Although the initial idea for Deliscript was inspired by the neon sign in front of Canter's Delicatessen in Los Angeles, the design soon took on a life of its own—and its own distinctive look. Unlike most "retro" fonts, Deliscript is not a retread of an older design that had been lost or forgotten, found, and then recreated. Like its sibling Metroscript, it is a completely new and unique design created from the ground up. It may have historical antecedents, but despite the "déjà vu" feeling it may provoke, let me assure you that it's as new and fresh as anything else out there.

Deliscript was initially conceived as an upright script, but after playing with the design for a while, I decided to also create an italicized version: Deliscript Slant. This version is much more than the upright version skewed at an angle—it has its own unique characters that only appear in Deliscript Slant.

I hope you enjoy using these fonts as much as I did creating them!

Michael Doret
Alphabet Soup Type Founders
May, 2009

A FEW DELISCRIP T POINTERS:

1 **PLEASE**

1 **PLEASE** don't set Deliscript in all caps! In fact, traditionally most scripts were never meant to be used without lower case letters.

2 **Wrong/Right**

2 **NEVER** change the letterspacing between adjacent lowercase characters. The character alignment has been carefully planned, and changing the letterspacing can lead to unintended consequences!

3 **Gum Gum Gum**

3 **You CAN** change the proportion of the type by scaling it (slightly) either horizontally or vertically. If you are using Deliscript *Slant* this will also change the angle of the letters.

4 **Cannoli Cannoli Cannoli**

4 **You CAN** change the angle (slightly) without affecting the font proportion by using the "Shear" tool in your application.

5 **OpenType x**

5 For the alternate characters, connections and ligatures to work properly we would strongly recommend keeping the **Standard Ligatures** and **Contextual Alternates** buttons in the OpenType palette always turned **on**.

6 **OpenType x**

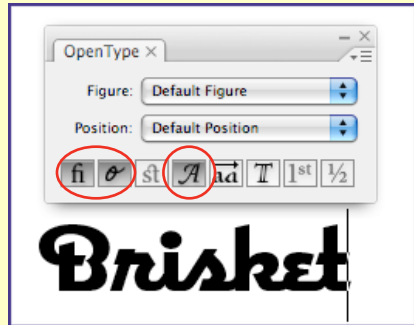
6 The **Swash** button in the OpenType palette is used not just for enabling the variable length tails, but also for activating certain complete words and phrases such as 'No', 'of the', 'by', etc.

7 **OpenType x**

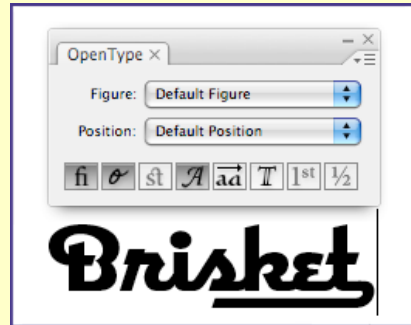
7 The **Stylistic Alternates** button is used to activate alternate characters (consult the Character Set on page 4), The **Titling Alternates** button is used to activate the unique crossbars which can extend out from the lowercase 't', described on page 3.

Adding Variable Length Tails: as Simple as 1, 2, 3.

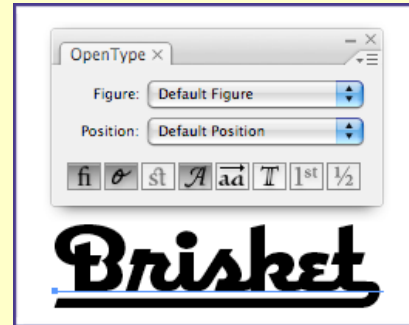
Step 1: Set your text making sure that **Standard Ligatures**, **Contextual Alternates**, and the **Swash** buttons are enabled.



Step 2: With the 3 buttons selected in the OpenType Palette, type an **Underscore**. The shortest length of the default tail will appear.



Step 3: Keep tapping the Underscore key until the desired length is achieved (in this case eight more keystrokes). Voila! Simple.



HOW TO ADJUST THE TAIL LENGTH AFTER DETERMINING THE TAIL STYLE:

Step 1: Move the text cursor to between the last letter and the tail...



Step 2: ...then hit the Delete key to shorten the tail...



...keep hitting the Delete key to shorten the tail even more.



Step 3: ...or hit the Underscore key to create a longer tail. Ahhhh, just right!

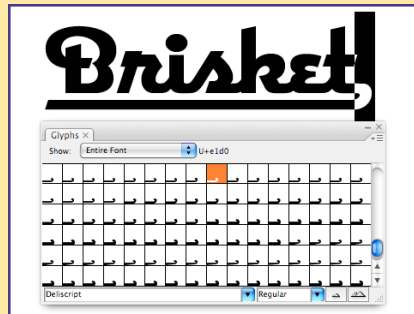


HOW TO CHANGE THE TAIL STYLE:

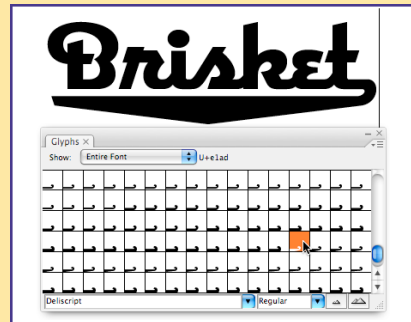
Step 1: Move the text insertion point to the right of the tail.



Step 2: Hold down the Shift key and type a left arrow(←) to select the end of the tail. Open the Glyph palette and notice the different tail styles, the current one being the one that's highlighted.

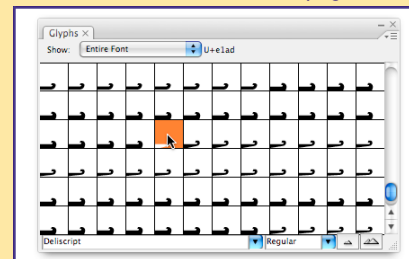


Step 3: With the end of the tail selected (Step 2, at left), double-click on the shortest tail from one of the other five styles. This will change the style of the tail to that style.



To change it to a different style yet again, repeat Step 2 (at left) and double-click on the shortest tail of the desired style. The shortest tails are always the ones directly following the last (longest) tail of a previous style in the Glyph palette (reading left to right). Then finally, to adjust the length of the tail, see the instructions in the box to the right: **"HOW TO ADJUST THE TAIL LENGTH . . ."**

There are six different tail styles, and each is displayed in order—from shortest to longest within each style—at the bottom of the Glyph palette. The six different styles can be seen in more detail in the Tails Menu on page 5.



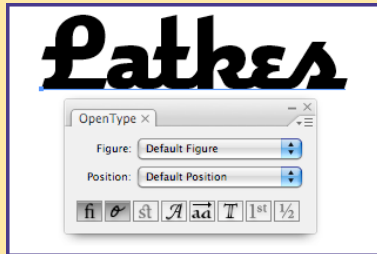
In addition to the four more traditional tail designs, there are two that are taller than the others (#3 & #5). These special, thicker tails can be used to accommodate secondary words, such as in a logo or title treatment.



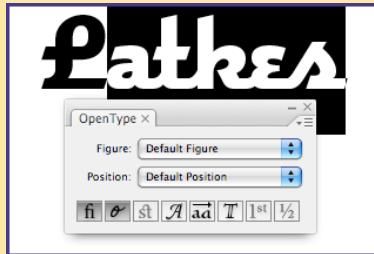
The “T-Crossbar” Feature

One feature that I designed into Deliscript (and I believe that this feature has never before been seen in a font) is the unique ability to extend the crossbar of the lowercase “t” out to the left or right over other adjacent lowercase letters, or even over a wordspace. This type of flourish had previously only been seen in hand-lettering. Your use of this feature should probably be on the conservative side (and probably only in titles, logos, or single words), because it might be a little much to see it overused in blocks of text! So have fun—but use this feature judiciously!

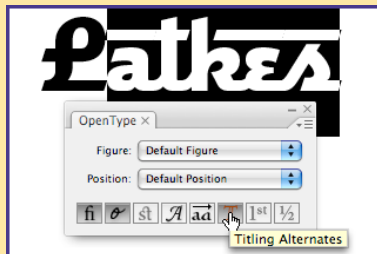
ACTIVATING THE T-CROSSBARS



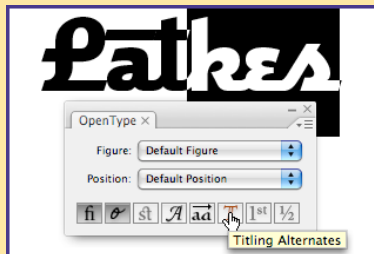
Step 1: Set your desired copy with (as usual) both the **Standard Ligatures** and **Contextual Alternates** buttons enabled.



Step 2: Using the Type Tool select the letters for the t-crossbar to pass over. It can even be the entire word (minus the cap).



Step 3: Click on the **Titling Alternates** button. You’ll see the crossbars appear over the areas you selected. The ‘t’ has also now changed to an alternate ‘t’.



Step 4: To remove the crossbar from an area select it again with the Type Tool and then **disable** the **Titling Alternates** button by pressing it again.



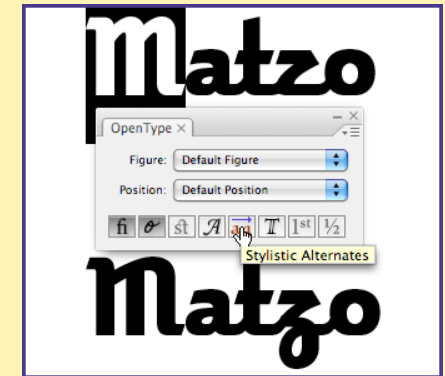
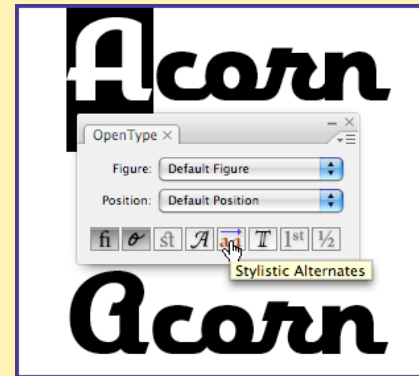
Step 5: If you’d like the crossbar to extend beyond the end of the word—add a wordspace after the word and then select that wordspace with the Type Tool.



Step 6: Then all you need do is to again enable the **Titling Alternates** button, and you’ll have a crossbar extending beyond the end of the word

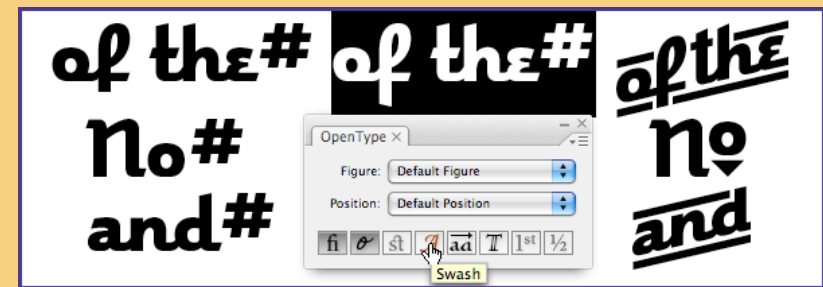
Stylistic Alternates

Alternate characters (where available) may be accessed by highlighting a letter with the Type Tool, and then enabling the Stylistic Alternates button in the OpenType palette. Please check the Glyph Palette for availability of alternates.



Setting “WordLogos”

In addition to individual letters, ligatures, numbers, accents, symbols, and various and sundry glyphs, I’ve created what we’ll call “WordLogos”—complete words that you can access as part of a Deliscript setting or separately for any purpose. They include words or phrases such as “of the” and Ltd. They are accessed by typing the words you want to set followed by a ‘#’. For example if you want to access the “of the” WordLogo you would type “of the#”, highlight all the letters with the Type Tool and then, in similar fashion to how the tails were accessed, enable the **Swash** button in the OpenType palette. The type-written text then turns into a WordLogo (see examples below).



On the following page is the Deliscript Character Set. It wouldn’t be practical to show all of the more than 800 glyphs making up each font, so I’ve eliminated some of the more obvious ones such as the many that are necessary to enable the t-crossbars. I also didn’t think it would be practical to show each and every length of the six designs that comprise the 120 tails.



THE Deliscript Tails MENU

There are 6 different tail styles, and within each style there are 20 different lengths ranging from short to long. All the tails may be found at the very bottom of the Glyph Palette and are arranged in groups from left to right by style. Within each group they start with the shortest, and end with the longest. The next style then starts again with its shortest tail. It is important to be able to discern which are the shortest tails in the Glyph Palette because it will be necessary in order to be able to change the tail style. The tails are represented below in the same order they appear in the Glyph Palette—left to right and top to bottom. Not all the lengths are represented due to space constraints: styles #1, 2, 5 & 6 are represented by their longest lengths, while styles #3 & 4 by all 20 lengths.

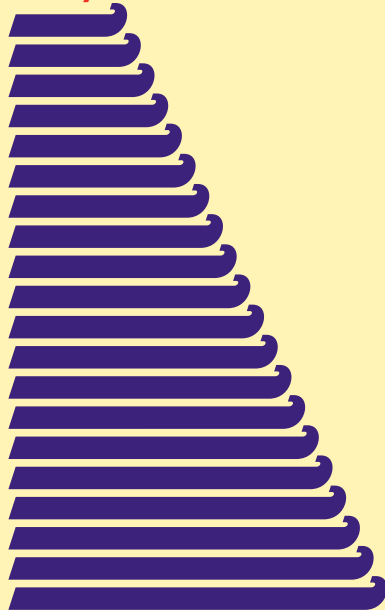
Tail Style #1



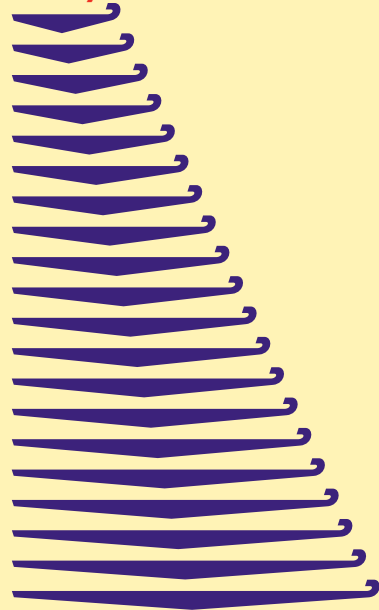
Tail Style #2



Tail Style #3



Tail Style #4



Tail Style #5



Tail Style #6



Deliscript Design and Art: Michael Doret

Deliscript OpenType Programming: Patrick Griffin/Canada Type
<http://CanadaType.com>

You're probably familiar with Michael Doret's logo and lettering work without being aware of it. If you've seen his logo for the NY Knicks or one of his many Time covers then you might be aware of the power and dynamism he has brought to the art of the letterform. He's now applying to his font design efforts all those years of experience in creating letterform art—now under the name *Alphabet Soup Type Founders*.



[CLICK HERE TO VIEW OR PURCHASE](#)

Check out these other fonts from Alphabet Soup available now at



[Click here to view or purchase Grafika](#)



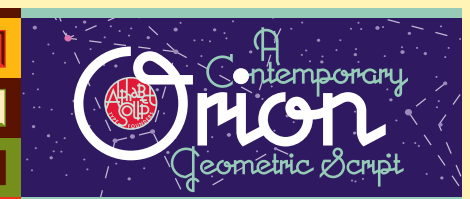
[Click here to view or purchase Metroscript](#)



[Click here to view or purchase Bank Gothic](#)



[Click here to view or purchase PowerStation](#)



[Click here to view or purchase Orion](#)

The Deliscript User Manual © 2009 Michael Doret