

GRANDINOTE

MAGNETOSOLID® AMPLIFIERS



GRANDINOTE DIVINA

USER MANUAL



INDEX

INTRODUCTION	PAG. 3
PRODUCT DESCRIPTION	PAG. 3
SPECIFICATIONS	PAG. 4
WARNINGS	PAG. 5
POSITIONING	PAG. 6
CONNECTIONS - REAR PANEL	PAG. 7
FRONT PANEL	PAG. 8
REMOTE CONTROL	PAG. 9
SETTINGS	PAG. 10
INPUT'S VOLUME	PAG. 11
BLACK DISPLAY	PAG. 12
ATTENUATION (BALANCE)	PAG. 13
REMOTE CONTROL OFF	PAG. 14
AMSYNET CONFIGURATION	PAG. 14
INCREASE UNBALANCED RCA INPUTS	PAG. 15



INTRODUCTION

GRANDINOTE congratulates with you for the excellent choice done, buying this exclusive amplifier, masterpiece of style and technology.

You listened the extraordinary musical characteristics of "Magnetosolid®" amplifiers: neutral tone, rich details and harmonics, high speed, big extension, big tight... without intermodulation distortion, with surprising dynamic range, insuperable coherence, natural sound...

These and other qualities are the result of studies and extensive research about the union and interaction of **solid** state components with ferromagnetic machines.

The fusion of the words: "Magnetic" and "Solid" is the born of "Magnetosolid®", the point of union of all amplifiers by Grandinote.

This exclusive product is increased at the top of music characteristics, thanks to **Magnetosolid-VHP** output stage, the result of the maxim application of **Magnetosolid®** technology.

Magnetosolid-VHP uses very expensive ferromagnetic components, builded on Grandinote's specificatons.

PRODUCT DESCRIPTION

GRANDINOTE DIVINA is a integrated "multi-case" amplifier. The two channels are inside two different chassis, like monofonic power amplifiers.

The use of this amplifier system is identical to a integrated amplifier: volume regulation, input selection... are sincronized by "AMSYNET", AMplifier SYstem NETwork.

Grandinote Divina by **Magnetosolid-VHP** technology claim musical qualities of tight and extension like solid state amplifier, preserving musicality, sweetly and naturality like valuable tube amplifier.



SPECIFICATIONS

- Monofonic integrated amplifier
- Power for channel 60W (4 and 8 Ohm)
- Damping factor >230
- Frequency response 1,5Hz - 300 kHz
- Three unbalanced inputs RCA
- Three balanced inputs XLR (full-balanced)
- Balanced inputs XLR unbalanced convertibles
- Tensione d'ingresso di saturazione 300mV RMS
- Class "A"
- Direct coupling stages: without capacitors between stages
- No feedback
- Weight 30kg (each channel)
- W=318 x H=196 x L=473 [mm] (each channel)
- Voltage power supply 230V
- Absorption 220W (each channel)
- **Magnetosolid-VHP** Technology

NOTE:

These specifications will can change without the obligation to report, by Grandinote.



WARNINGS

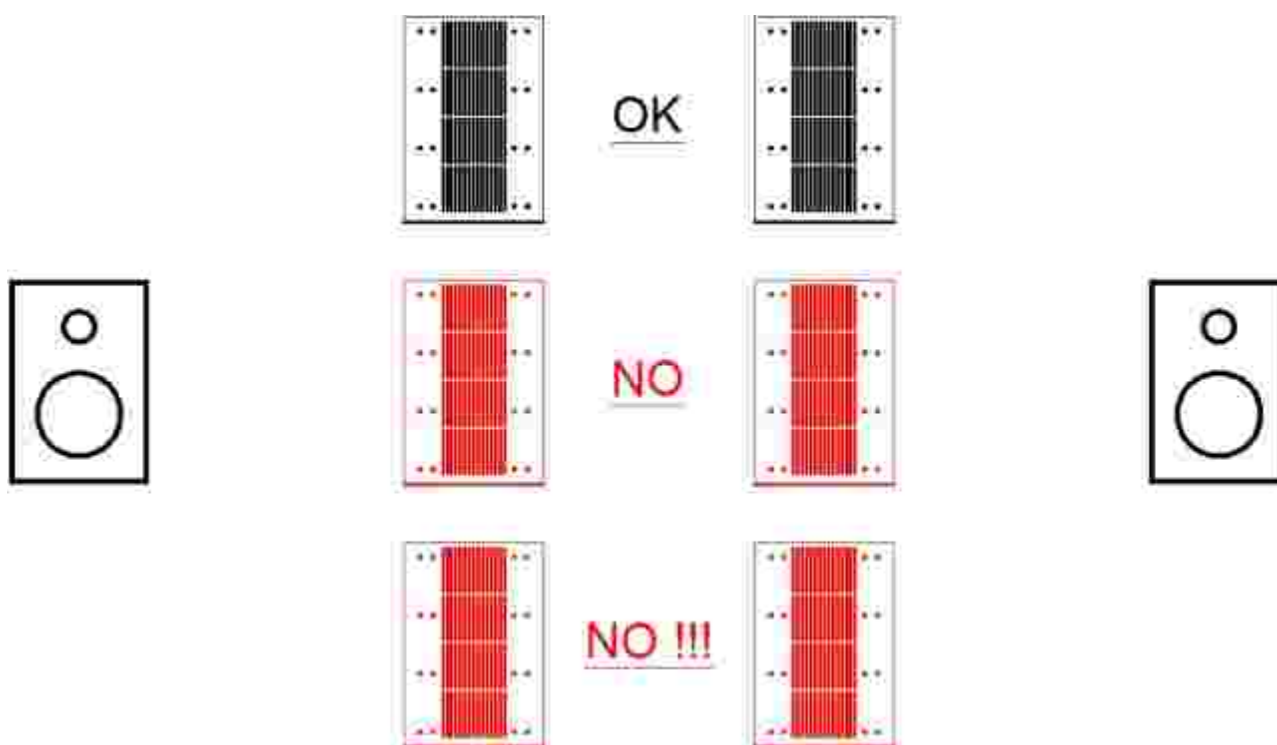
For the correct and sure use of this product, Grandinote recommends the study and the application of this warning list.

- Don't open the device.
- Don't turn off and turn on quickly the device.
- Before connecting/disconnecting cables, turn off the device and wait one minute.
- In case of malfunction, contact Grandinote's assistance.
- Don't close the vents of cooling of the device.
- Don't put objects or liquids in the vents of cooling of the device.
- Keep clean the aluminium dissipators with compressed air, or contact Grandinote's Assistance.
- Have care the device is supported by correct stand, in function of the weight of the device specified in this user manual.
- Don't strike and don't shake the device.
- Temperature range from 0°C to 35°C.
- Don't approach the device to water, acid, or dangerous substances.
- Don't put every object on the device.
- Clean only with a dry cloth, or slightly damp with water and neutral soap.
- Be sure the power supply net is correct with the device's specifications.
- Be sure the electrical load, on the output connectors, has the correct specifications for the device.
- Don't be short circuit between the connectors with other connectors, ground, the device's body or other potentials.
- Connect the inputs audio, only to appropriate and properly functioning audio sources.
- Don't put potentials or currents not appropriate in the device's inputs, only "LINE" signals.
- Handle the device with care, for don't damage it, or other things or persons.
- Use the device only for audio amplification and not for other applications.
- Keep the device away from pets, child or other people, who with an inappropriate use can cause damage.



POSITIONING

In the "PICTURE 1" we see the correct positioning of the device.
 The Divina's red representations indicate the no good positioning for the sound.
 Especially in front of the loudspeakers.
 In the rear of the loudspeakers we keep the best sound performances.



PICTURE 1: POSITIONING



CONNECTIONS - REAR PANEL

In the **PICTURE 2**, we see the device's input-output connectors.

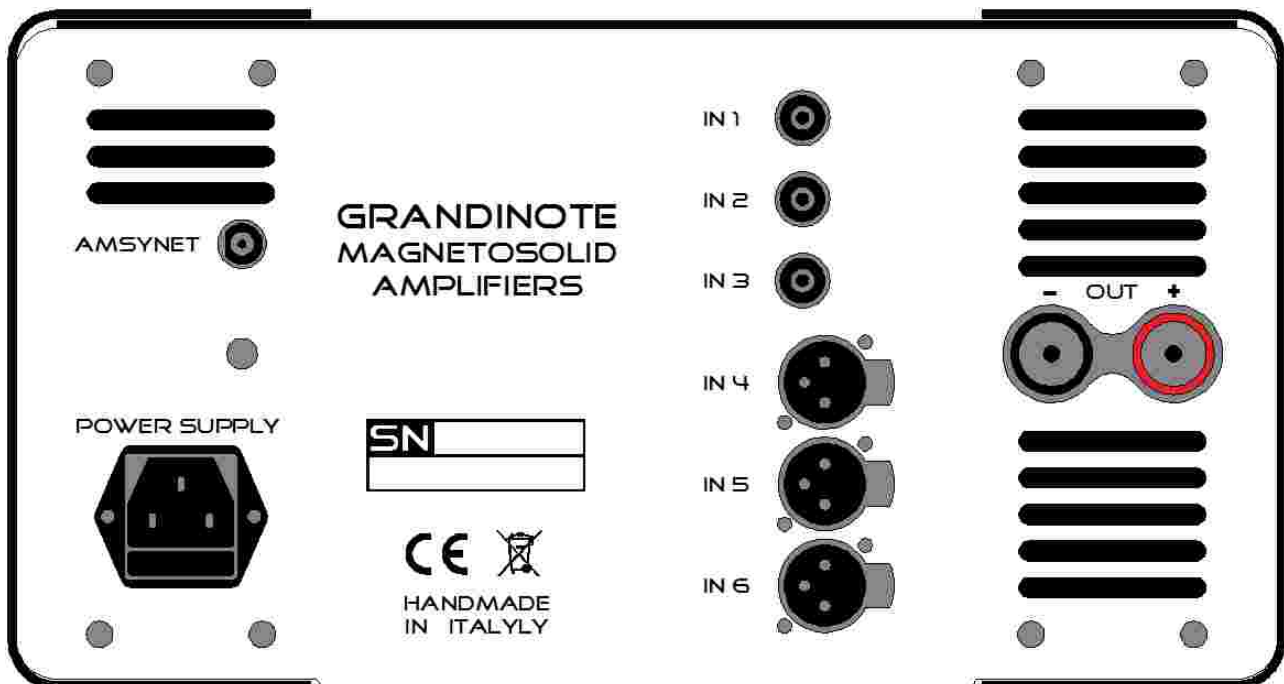
Input one, two and input three, called **IN1**, **IN2** ed **IN3**, are unbalanced RCA.

The other inputs, **IN4**, **IN5** ed **IN6** are balanced XLR (full balanced).

The balanced inputs XLR can be converted in unbalanced inputs. The procedure is illustrated in the chapter **INCREASE UNBALANCED RCA INPUTS**.

In the right of the picture we see the output loudspeakers connectors. In the lower left we see the IEC connector for the power supply, with his protection fuse.

In the higher left we see the **AMSYNET** connector, for the sincronization of the two channel. The setting of the **AMSYNET** will illustrated on chapter: **AMSYNET CONFIGURATION**.



PICTURE 2: REAR PANEL



FRONT PANEL

In the **PICTURE 3**, we see the device's front panel.

The display is in the middle of panel, below it the power supply switch.

(Don't turn off and turn on quickly the device)

To the sides of display we see six buttons for the total control to the device. The control is possible also with remote control.

The three right buttons are for the volume regulation, the left buttons up and down are for the input increase and decrease. The left button in the center is for the device's configuration.

In the next pages of this manual, we will deepen the device's configuration.

NOTE: switching from input 3 to input 4 can cause a little "glitch", because the device changes configuration (unbalanced/balanced). This is for the extreme essentiality of their circuits, to the advantage of the natural sound.



PICTURE 3: FRONT PANEL

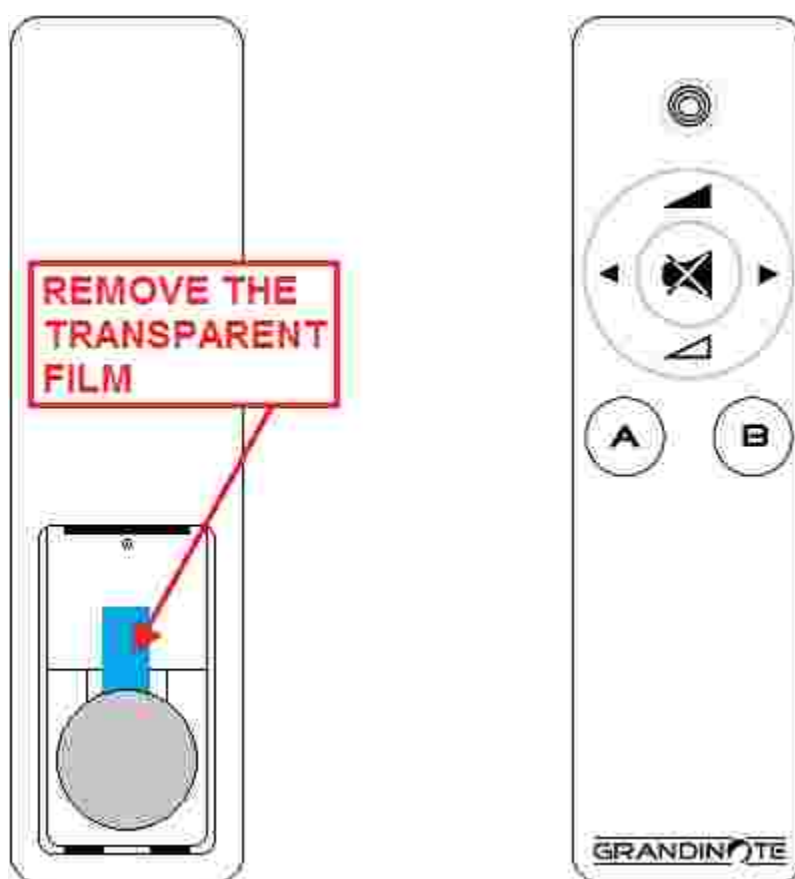


REMOTE CONTROL

In the **PICTURE 4**, we see the device's remote control.

The meaning of the keys on the remote control:

- The up key: turns on the display (only if the display is off)
- The round up key: turns up the volume
- The round down key: turns down the volume
- The round right key: increases the input
- The round left key: decreases the input
- The central key: mute control



PICTURE 4: REMOTE CONTROL



SETTINGS

Going in program settings, it will be possible to personalize some functions.

To start program setting, press **PRG** key.

The display visualize the first setting. Press **PRG** again, for to confirm and pass to the second setting, until the last setting.

To the last setting, press **PRG** for to confirm and go out of program settings.

The sequence of the settings is:

INPUT'S VOLUME 1	PAG. 12
INPUT'S VOLUME 2	PAG. 12
INPUT'S VOLUME 3	PAG. 12
INPUT'S VOLUME 4	PAG. 12
INPUT'S VOLUME 5	PAG. 12
INPUT'S VOLUME 6	PAG. 12
BLACK DISPLAY	PAG. 13
ATTENUATION (BALANCE)	PAG. 14
REMOTE CONTROL OFF	PAG. 15
INCREASE UNBALANCED RCA INPUTS	PAG. 16



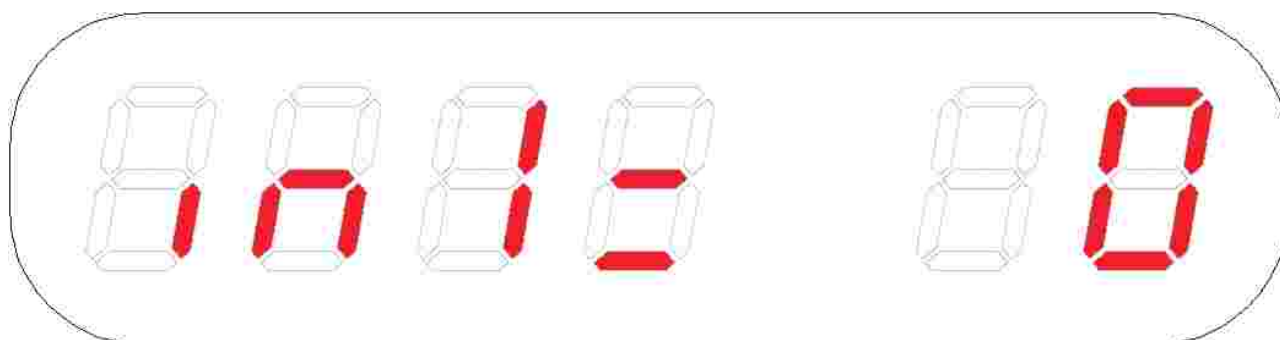
INPUT'S VOLUME

The first 6 settings are for correlate a volume level to every input.

If volume level 20 is correlated to input 3, every time the input become 3, the device slowly increases the volume, arriving to 20.

The increase of the volume can be stopped, pressing any button.

Press **PRG**:



By **IN+** and **IN-** keys on change the value, from 0, to the max volume of the device.

By **PRG** key on confirm the value and on pass to the next setting.:

IN2 volume,

IN3 volume,

IN4 volume,

IN5 volume,

IN6 volume.

The modality settings are identical for every input.

The next pres on **PRG** key leads to the next setting.

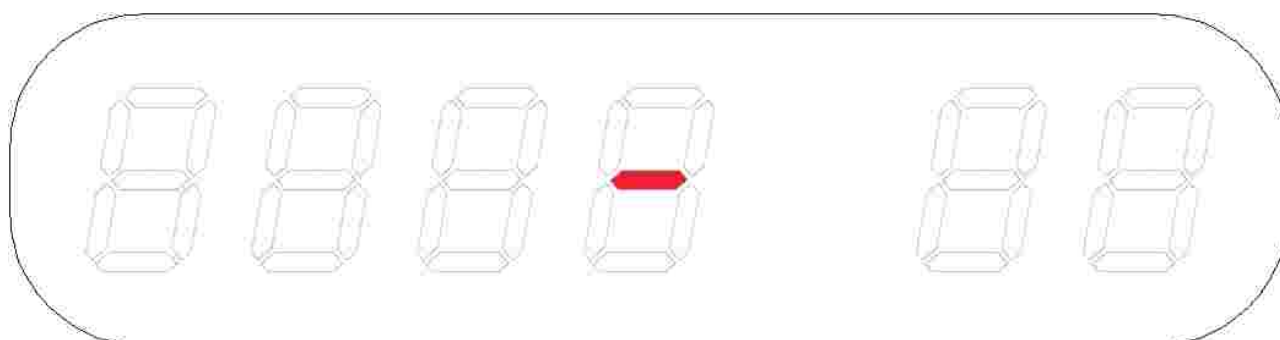


BLACK DISPLAY

This function is for the turn off the display in automatic, if the display don't changes for some seconds. When the utente press a button, the display turns on.

So, when the display don't will change again, the display will turn off again.

The "black" display is represented in this picture:



PAY ATTENTION: the any key pres changes the device's status and turns on the display.

Only the three concentric circles remote control key turns on the display, without to change device's status.

Press **PRG**, to visualize on the display "DISP" write:



By **IN+** and **IN-** keys on change the "ON" / "OF" status.

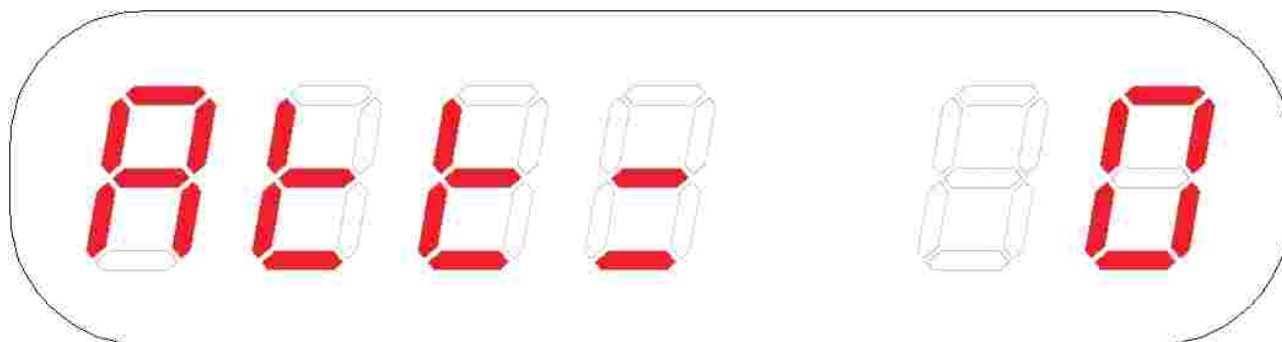
The next pres on **PRG** key confirms and leads to the next setting.



ATTENUATION (BALANCE)

The attenuation of the output level for one of the two channels is like balance control.

Press **PRG**, to visualize on the display "ATT" write:



By **IN+** and **IN-** keys on change the value, from 0, to the max of 20.

The visualisation of the attenuation value and the regulation of the volume change together.

The next press on **PRG** key confirms and leads to the next setting.



REMOTE CONTROL OFF

AMSYNET CONFIGURATION

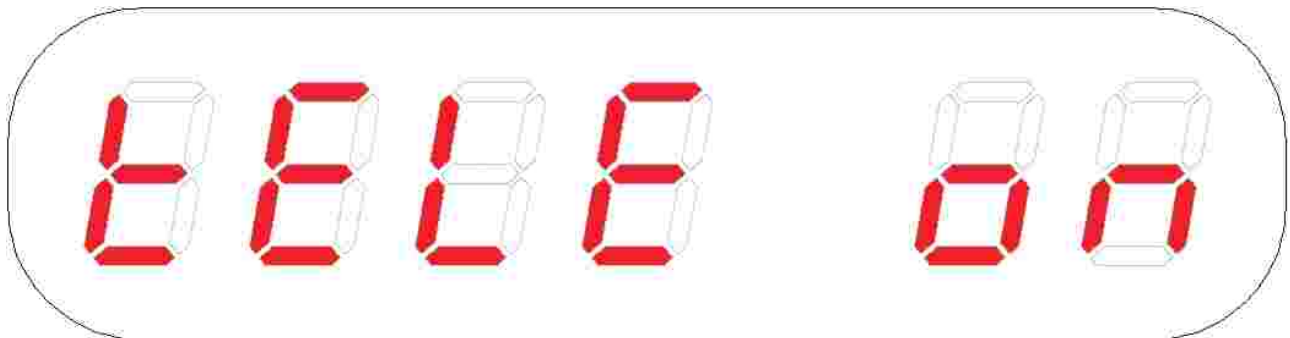
This setting excludes the remote control reception.

PAY ATTENTION: This configuration is very important for the correct AMSYNET's work. To avoid conflicts, it's necessary to have only one channel with remote control on. The remote control of the other channel must be turned off.

The device with remote control turned off receives the remote information by AMSYNET, from the other channel.

To constitution of AMSYNET is enough to make this setting and to link the two devices by AMSYNET connectors(see FIGURA 2).

Press **PRG**, to visualize on the display "TELE" write:



By **IN+** and **IN-** keys on change the "ON" / "OF" status.

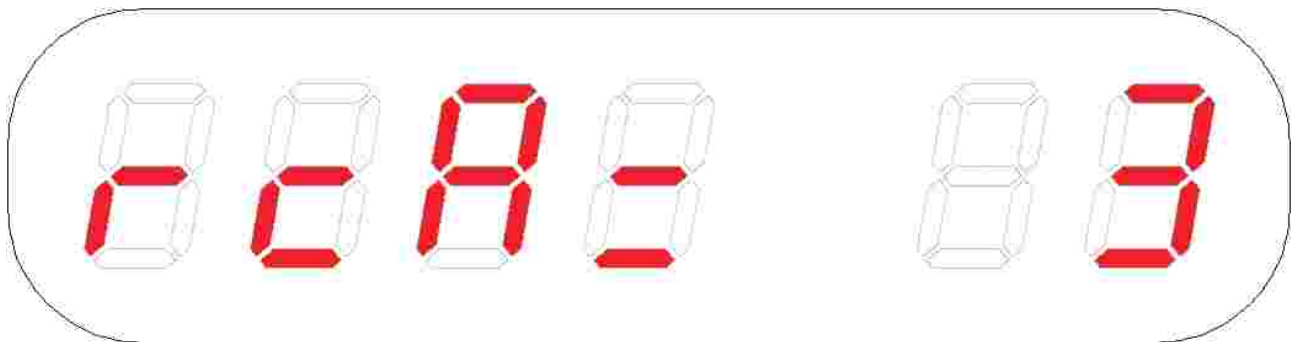
The next pres on **PRG** key confirms and leads to the next setting.



INCREASE UNBALANCED RCA INPUTS

This setting increases the number of unbalanced RCA inputs.
Over the setting it's necessary to use a XLR/RCA adapter.

Press **PRG**, to visualize on the display "RCA" write:



By **IN+** and **IN-** keys on change the value, from 3, to the max of 6.

With 3, they are only the two RCA of the device.

With 4, the first XLR is unbalanced: use XLR/RCA adapter here.

With 5, also another XLR is unbalanced: use XLR/RCA adapter also here.

With 6, also the last XLR is unbalanced: use XLR/RCA adapter also here.

The next pres on **PRG** key confirms the setting.

PAY ATTENTION: For this setting, every time the setting changes, a special security code is required.

Only with the code to 23, the change to the setting is accepted.

With a code different to 23, the change to the setting is not accepted.



GRANDINOTE

MAGNETOSOLID® AMPLIFIERS

GRANDINOTE DI MAGRI MASSIMILIANO
VIA MANGIAROTTI, 20
27042 BRESSANA BOTTARONE (PV)
-ITALY-

P.IVA: 02083730180
COD. FISCALE: MGRMSM73L10B201W
COD. IBAN: IT 40 M 08386 83800 000000380994

WWW.GRANDINOTE.IT
INFO@GRANDINOTE.IT
POSTMASTER@GRANDINOTE.IT