

# GARDEN CULTIVATOR



Flora Best

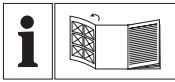
FGH 700/9

GB IE CY

## GARDEN CULTIVATOR

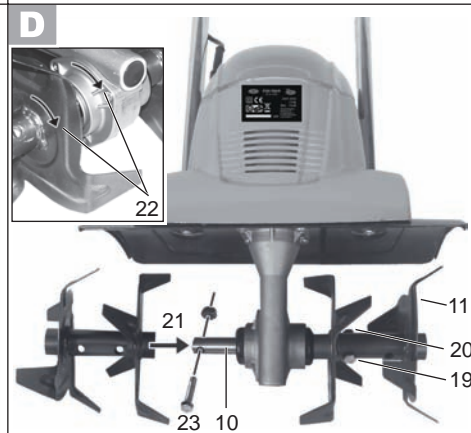
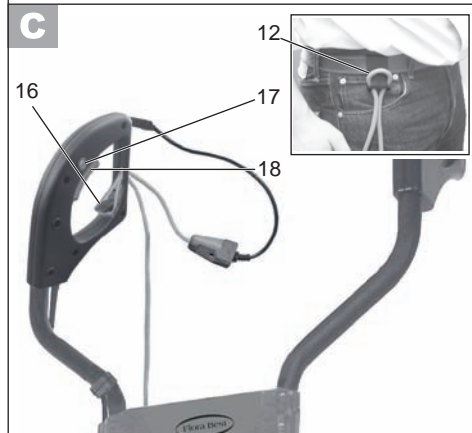
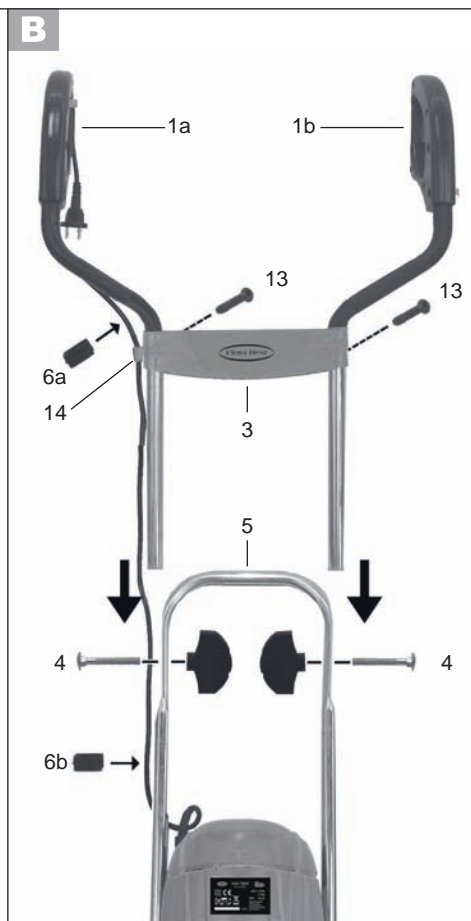
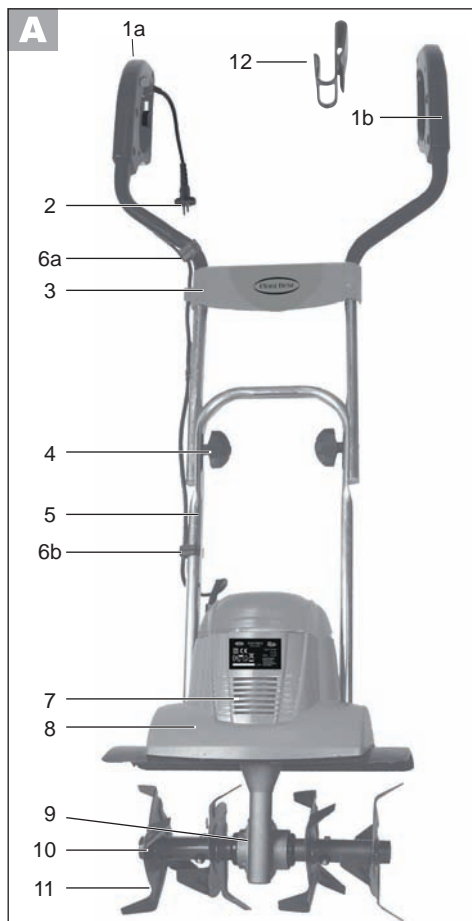
Operation and Safety Notes





GB IE CY

Before reading, unfold the page containing the illustrations and familiarise yourself with all functions of the device.



# User manual

**FGH 700/9 Electric Tiller**

## Contents

<b>Safety notes</b> .....	<b>4</b>
Symbols .....	4
General safety notes .....	5
<b>Functional description</b> .....	<b>7</b>
<b>Functional parts</b> .....	<b>7</b>
<b>Intended purpose</b> .....	<b>7</b>
<b>Assembly instructions</b> .....	<b>8</b>
Scope of delivery .....	8
Fitting the grip tubing .....	8
<b>Operation</b> .....	<b>8</b>
Switching on and off .....	8
Operating instructions .....	8
<b>Cleaning, maintenance, storage</b> .....	<b>9</b>
General cleaning and maintenance work ...	9
Changing the tines .....	9
Storage .....	10
<b>Guarantee</b> .....	<b>10</b>
<b>Replacement parts</b> .....	<b>11</b>
<b>Disposal, environmental protection</b> .....	<b>11</b>
<b>Technical specifications</b> .....	<b>11</b>
<b>EC Declaration of Conformity</b> .....	<b>12</b>
<b>Exploded diagram</b> .....	<b>13</b>
<b>Grizzly Service-Center</b> .....	<b>14</b>



Before first using the machine, please read this instruction manual carefully, for your own safety and for the safety of others. Keep the manual in a safe place and pass it on to any subsequent owner to ensure that the information contained therein is available at all times.

# Safety notes

This section deals with the basic safety regulations while working with the electric tiller.

## Symbols

### Symbols on the tool



**Warning!**  
Read the user manual



**Warning!** Protect from rain and damp



**Danger of injury from objects spinning off!** Keep surrounding persons away from the hazard area.



**Warning!** Switch off the tool and disconnect it from the mains before carrying out any cleaning or maintenance work.



**Danger from damaged mains cable.** Keep mains cables away from tines!



**Danger of injury from rotating parts.** The tines will continue to rotate after the tool has been switched off. Wait for them to stop moving.



Sound power level  $L_{WA}$  in dB.



Safety class II



**Do not dispose of electrical equipment in household waste.**

## Symbols in the manual



### **Warning symbols with information on damage and injury prevention.**



Instruction symbols (the instruction is explained at the place of the exclamation mark) with information on preventing damage.



Help symbols with information on improving tool handling.

## General safety notes



**Warning!** Improper use of this tool may lead to serious injury. Read this instruction manual carefully before you start working with the tool, and familiarise yourself with its controls. Keep the manual in a safe place and pass it on to any subsequent owner to ensure that the information it contains is always available.



Please read the following safety guidelines in order to avoid risk of fire, electric shock, personal injury and damage to objects:

### **Preparation:**

- For safety reasons, do not allow children or young people under 16 or anyone not familiarised with this instruction manual to use the tool.
- Never use the tool while others, especially children or pets, are close by.
- Familiarise yourself with handling the tool and pay attention to all possible dangers that may be overheard while working with the tool.
- Check the terrain on which you will be using the tool, and remove stones, sticks, wires or other foreign objects that may be caught up and spun off.
- Wear proper working clothes, such as firm

footwear with non-slip soles and strong long trousers. Do not use the tool barefoot or wearing open-toed sandals.

- To prevent injury from the tines, only switch the tool on in its working position.
- Examine the tool beforehand every time you use it. Do not use the tool when the safety components (such as the power safety catch or guard), cutting parts or bolts are missing, worn or damaged. In particular, check the mains cable and dead-man lever for damage.
- Only replace damaged bolts or tines in complete sets to prevent imbalance.
- Only use replacement and accessory parts delivered and recommended by the manufacturer. Using foreign parts will immediately lead to loss of guarantee.

### **Working with the tool:**



Keep your hands and feet away from the tines while working, especially when starting up the tool – injury hazard!

- Observe any noise-prevention regulations and local by-laws. Using the tool may be limited or prohibited on certain days such as Sundays or public holidays, or during certain times of the day (midday, at night) or in certain areas (such as at health spas and hospitals).
- Do not use the tool to chop up stones or till lawn soil, as such use may damage the tool.
- Do not use the tool in rain, foul weather or damp surroundings (such as near garden ponds or swimming pools). Only use in daylight or good lighting conditions.
- Be sensible. Do not use the tool if you are tired or easily distracted, or after the use of alcohol or medicines. Take a break as soon as you need one.
- Make sure that you are standing firmly when using the tool, especially on slopes.

If working on a slope, work along the slope, not upwards or downwards. Be particularly careful when changing direction on the slope. Do not use the tool on excessively steep slopes.

- If there is any danger of slipping on sloped ground, have a second person secure the tool with a rod or cable. The second person should stand up the slope at a safe distance from the tool.
- Always hold the tool securely in both hands while working with it.
- Make sure that the grips are dry and clean. Be careful while moving backwards – danger of tripping over!
- Do not use the tool if it is damaged, incomplete or altered without the approval of the manufacturer. In particular, do not work with the tool if guards or protection fittings are damaged or missing.
- Do not overload the tool. Only work in the performance range stated. Do not use tools that do not have sufficient power for heavy jobs. Do not use the tool for any use other than that intended by the manufacturer.
- Avoid damage to the tool. Do not apply extra weight and do not drag the tool over hard surfaces such as tiles or steps.

### Stopping work:



Warning! The tines will continue to turn for a few seconds after you switch the tool off. Wait until they have stopped moving – injury hazard!

- Do not lift or transport the tool while the motor is running. Turn the tool off and wait for the tines to stop moving, then disconnect the tool from the mains before changing the area you are working on.
- Never leave the tool unattended where you were using it.
- Switch the tool off, wait for the tines to stop moving and disconnect the tool from

the mains under the following circumstances:

- Always before leaving the tool.
  - Before removing remnants of soil and plants
  - When the tool is not in use
  - Before you conduct maintenance or cleaning work on the tool
  - If the mains cable is damaged or caught up
  - If the tool collides with an obstacle or starts to vibrate in an unusual manner. In this case, examine the tool for damage, and have it repaired if necessary.
- Use the tool away from flammable fluids or gases. Failure to do so may result in fire or explosion.

### Maintenance and storage:

- Make sure that all nuts, bolts and screws are tight and that the tool is in safe working order.
- Do not attempt to repair the tool yourself unless you are qualified to do so. Return the tool to our service centre to carry out any work not listed in the user manual.
- Keep the tool in a dry place out of children's reach.
- Be careful in handling the tool. Keep the tines sharp and clean to improve its working safety and effectiveness.
- Follow the maintenance regulations.

### Electrical safety:



Warning! Do not use the tool if the mains or extension cable is damaged – danger of electrical shock.

- Keep the mains cable away from the tines. Always trail the mains cable behind you or the person operating the tool. If the cable becomes damaged during use, immediately disconnect it from the mains. Never touch the mains cable before un-

plugging it from the mains.

- Make sure that the mains voltage matches the data on the tool's rating label.
- If possible, connect the tool to a socket with a residual-current (RC) trip switch at a triggering current of not more than 30 mA.
- Avoid skin contact with earthed objects such as metal fences and posts.
- Make sure that the connector on the extension cable is protected from splash water, and is made of rubber or has a rubber covering. Only use extension cables that are intended for outdoor use and are labelled as such. Use extension cables with a cable core diameter of at least one square millimetre. Always completely unwind the cable reel before use. Check the cable for damage.
- Use the cable hanger fitted for the purpose when using an extension cable.
- Do not carry the tool by the cable. Do not unplug the cable by tugging on it. Keep the cable away from heat, oil and sharp edges.

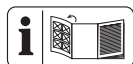
## Functional description

Your hand-operated garden tiller is equipped with a maintenance free electric motor and a gearbox with sump lubrication.

The tool is fitted with four rotating tine wheels that automatically dig themselves into the ground.

The aluminium frame can be folded to aid storage.

Please refer to the following descriptions for the function of the controls.



The major functional parts are shown on the foldout page.

## Functional parts

A

- 1a Right-hand fork grip with dead-man lever, safety release catch and cable tension relief
- 1b Left-hand fork grip
- 2 Mains cable
- 3 Plastic cross-plate
- 4 Wing-nuts and bolts for securing the grips
- 5 Frame tubing
- 6a Large cable clip
- 6b Small cable clip
- 7 Vent
- 8 Motor housing
- 9 Gearbox
- 10 Driveshaft
- 11 Tines
- 12 Belt clip

## Intended purpose

The tool is intended for breaking up and tilling coarse soil for the purpose of mixing in fertiliser, peat and compost in domestic areas.

Any use other than that specifically named in this manual may lead to damage to the tool and represents a serious injury hazard for the operator.

The operator or user of the tool is responsible for any damage or injury caused to other persons or property.

This tool is intended for use by adults. Children and persons unfamiliar with the manual must not be allowed to use the tool. Do not use the tool in rain or damp surroundings.

The manufacturer shall not be held liable for damage arising from improper use or incorrect operation of the tool.



## Assembly instructions



Always disconnect the tool from the mains before conducting any work on it.

### Scope of delivery

Carefully remove the tool from the packaging and check that the following parts are complete:

- Motor housing with tines and frame tubing
- Right-hand fork with dead-man lever and permanently fixed mains cable
- Left-hand fork grip
- Plastic cross-plate with cable guide
- Assembly tools, cable clips and belt clip
- User manual



While assembling the tool, make sure that the mains cable does not become caught and has enough slack.

### Fitting the grip tubing

B

1. Push the two fork grips (1a/1b) into the plastic cross-plate (3), and screw the plate into the corresponding holes in the grip tubing from behind using the bolts provided (13).
2. Push the mains cable into the cable guide (14) on the cross-plate.
3. Position the assembled grip frame with the tube ends on the left and right-hand sides at the lower frame tubing (5).
4. Push the two finger bolts into the holes from the outside inwards, and tighten them with the wing nuts (4).
5. Fasten the mains cable with the cable clips supplied:
  - Large cable clip (6a) above the cross-plate
  - Small cable clip (6b) at the frame tubing.

## Operation



Observe noise-abatement laws and local by-laws.

### Switching on and off



**Note: Before switching the tool on, make sure that the tool is not touching any other objects and hold it firmly in both hands.**

C

1. Plug the tool into the extension cable.
2. Loop the end of the extension cable and hang it onto the cable tension relief (16) to ease the tension on the cable.
3. Plug the tool into the mains.
4. Hang the extension cable onto the belt clip (12) and fasten it to your trouser belt.
5. To switch on, press the safety release catch (17) and then squeeze the dead-man lever (18). Release the safety release catch (17).  
**The tines will begin to rotate and dig themselves into the earth.**
6. To switch off, release the dead-man lever (18).



**Warning! The tines will continue to turn for a few seconds after the tool has been switched off. Do not touch the rotating tines – injury hazard!**

### Operating instructions



**Always keep a firm grip on the tool with both hands and watch your feet.**

**The tines may cause an accident. Be careful while moving backwards – danger of tripping!**



**Do not touch the gearbox, as it may become hot during operation – danger of burns!**





### To avoid damage to the tool:

- Never lift or drag the tool with the motor running.
- Lift the tool while moving it over hard surfaces such as tiles or steps.



Switch the tool off after working with it and for transport; disconnect from the mains and wait for the tines to stop moving.



- Walk the tool through the soil at normal pace and in a line as straight as possible.
- Always work away from the mains socket. Make sure that the cable is kept well away from the working area. Hanging the cable into the belt clip included in the package will help.
- **Overload protection:** The motor will cut out immediately if overloaded. The tool cannot be used until it has completely cooled down again.

## Cleaning, maintenance, storage



Warning! Always return the tool to the service centre for work not described in the manual. Only use original parts.



Switch the tool off, unplug it from the mains, and wait for the tines to stop moving before carrying out any maintenance or cleaning work on the tool.

Perform regular maintenance and cleaning on the tool. This will ensure long, reliable service.

### General cleaning and maintenance work



Do not spray the tool down with water (especially not under pressure), and do not clean it under running water.



Wear protective gloves when carrying out maintenance and cleaning work on the tool to avoid injury from cuts.

### Always clean the tool thoroughly after each use. Always keep the tool clean. Do not use cleaning fluids or solvents.

- Remove any soil and dirt residues stuck to the tines, driveshaft, tool surface and vents with a brush or dry cloth.
- Spray or rub biodegradable oil into the tines.
- Clean soiled grips with a damp cloth.
- Always check the tool for obvious damage such as loose, worn or damaged parts before using it. Check that all nuts, bolts, and screws are tight.
- Check the covers and guards for damage and correct fit. Change them if necessary.

We shall not be held responsible for any damage caused in any of the following ways:

- Improper repair
- Use of non-original parts
- Use other than for the intended purpose

### Changing the tines

The tool is fitted with four tine wheels that can easily be changed in pairs. Both of the tine-wheel pairs can be fitted on the left or right, as required.



***Always change both tine pairs at the same time to avoid damage to the tool from imbalance.***



Switch the tool off, unplug it and wait for the tines to stop turning.



1. Lay the tool on the ground with the rating label facing upwards.
2. Unscrew the hex bolt (19) and the self-locking nut (20) on the tine-wheel pair (11).

3. Slide the tine-wheel pair off the shaft (10).
4. Clean the driveshaft with biological oil.
5. Slide the new tines onto the drive-shaft with the holes on the axles aligned to the holes on the driveshaft (21).

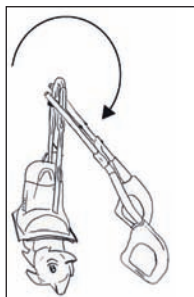


Make sure that the tines are set to their proper turning direction. The arrows on the gearbox and tines should point the same way ( **D** No. 22).

6. Slide the hex bolt through the hole and tighten on the self-locking nut (supplied with each new tine wheel pair 23).

## Storage

- Leave the motor to cool down before you put the tool into a closed space.
- Keep the tool clean, dry and out of the reach of children.



Unscrew the wing nuts ( **A** No. 4) and fold the fork grips down to reduce the space taken by the tool.

**Make sure that the cable does not become jammed.**

- The frame tubing ( **B** No. 5) also serves as a hook to hang up the tool at the place of storage.
- Do not cover the tool in plastic bags as moisture may form.



**Do not use the tool with the handle folded closed.**

## Guarantee

- This tool is subject to a guarantee period of thirty-six months. A shorter guarantee period of 12 months shall apply for commercially used and replacement tools according to statutory regulations.

**If you have a justified guarantee claim, please contact us at our service centre (see last page for our telephone number, fax number, and e-mail address). We will then give you the details on the claims procedure.**

- Damage caused by natural wear, overload, or improper use is not covered by guarantee. Certain components are subject to normal wear and are not covered by guarantee. Such components particularly include: tines.
  - Guarantee service is also conditional upon compliance with cleaning and maintenance instructions
  - Any damage caused by faults in materials or manufacturing shall be remedied by free repair or replacement.
  - You may have repairs not covered by guarantee carried out for a charge at our service centre. Our service centre will be pleased to supply you with a cost estimate.
- We can only process orders on tools sent in with adequate postage and packing.
- **Tools sent in by express, measurement cargo or other special forms of postage with freight collect will be refused.**
  - We will dispose of tools free of charge.

## Replacement parts

Use the service address or fax number supplied to order replacement parts. Make sure you include the order number in your order.

Set of tines  
Right/left ..... Order No. 30261000

Please contact our service address for all other replacement part numbers.

## Disposal, environmental protection

Be environmentally friendly. Return the tool, accessories and packaging to a recycling centre when you have finished with them.



Do not dispose of electrical appliances in household waste.

Return the tool to a recycling centre. The plastic and metal parts used can be separated and sorted for recycling. Ask our service centre for details.

## Technical specifications

<b>FGH 700/9 Electric Tiller</b>	
Motor power input.....	710 W
Mains voltage .....	230V AC
Mains frequency .....	50 Hz
Working width .....	360 mm
Max working depth .....	180 mm
Number of tine wheels.....	4
Nominal rotation rate .....	Approx 230 rpm
Weight .....	7.85 kg
Sound pressure level.....	69,3 dB(A)
Guaranteed sound power level.....	93 dB(A)
Vibration at hand grip .....	2.66 m/s <sup>2</sup>

Noise and vibration values have been determined according to the standards and regulations named in the declaration of conformity. Technical and optical alterations may be made without notice for the purposes of improvement. No guarantee can be given for the accuracy of dimensions, notices and specifications stated in this manual. The manufacturer shall therefore not accept liability for statutory claims arising from the manual.



## EU declaration of conformity

We hereby confirm that the  
**FGH 700/9 series electric tiller**

conforms with the following applicable relevant version of the EU guidelines as of model year  
2008:

**98/37/EC • 2004/108/EC • 2006/95/EC • 2000/14/EC**

In order to guarantee consistency, the following harmonised standards as well as national  
standards and stipulations have been applied:

**EN 709/A1:1999 • EN 60335-1/A2:2006 • EN 50366/A1:2006  
EN 55014-1/A2:2002 • EN 55014-2/A1:2001 • EN 61000-3-2/A2:2005 • EN 61000-3-3/A2:2005**

We additionally confirm the following in accordance with the 2000/14/EC emissions guideline:

Guaranteed sound power level: 93,0 dB(A)

Measured sound power level: 89,3 dB(A)

Compliance evaluation process carried out in accordance with Appendix V, 2000/14/EC

Labelled with CE identification mark in 2008

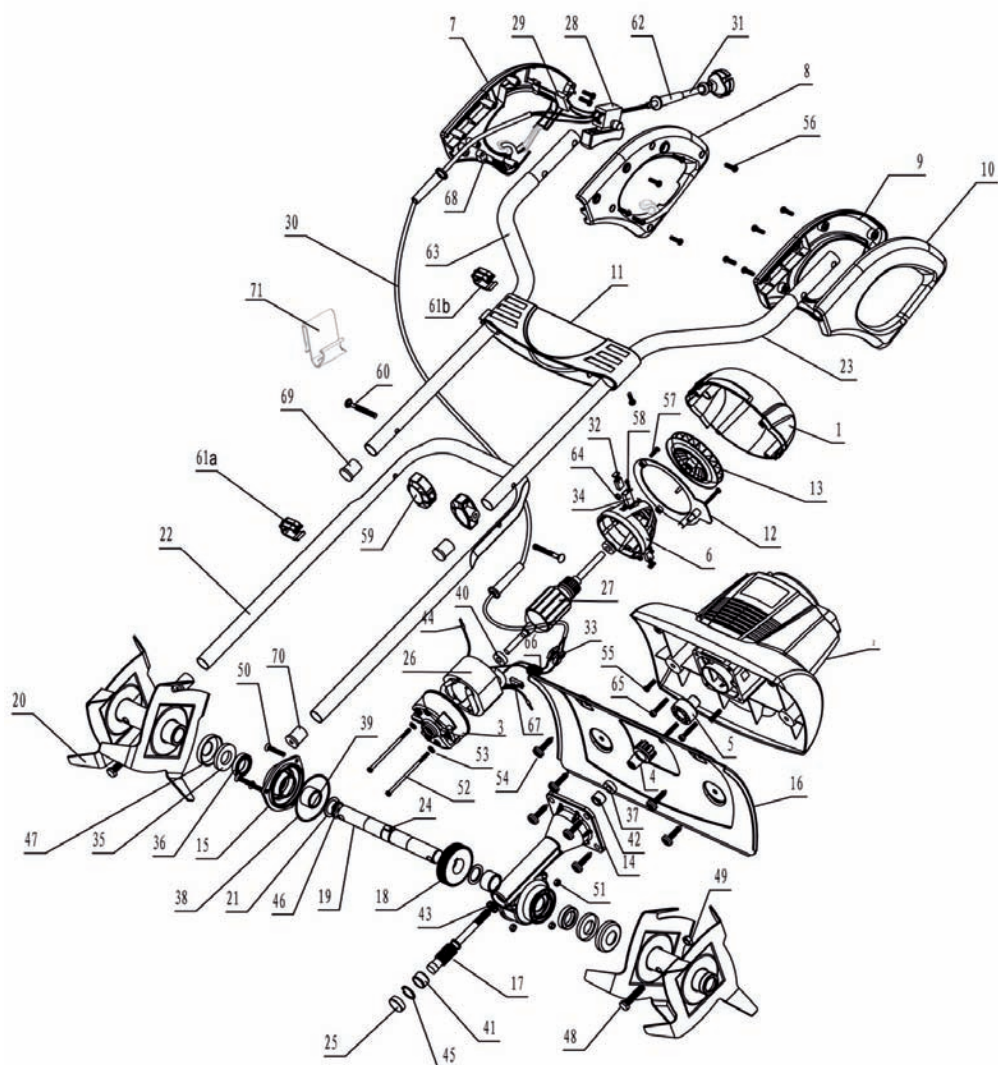
Responsible for product manufacture  
and technical documentation safekeeping:



Grizzly Gartengeräte GmbH & Co. KG  
Am Gewerbepark 2  
D-64823 Groß-Umstadt / 12.11.08

(Andreas Gröschl, Techn. director)

# Exploded diagram



# Grizzly Service-Center



## **DES Ltd.**

Unit 14-15

Bilston Industrial Estate

Oxford Street

Bilston, WV14 7EG

Tel.: 0870 787 6177

Fax: 0870 7876168

Email: [grizzly@deslimited.com](mailto:grizzly@deslimited.com)

*From Ireland:*

Tel.: 0044 870 787 6177

Fax: 0044 870 787 6168







IAN: 41803

**Grizzly Gartengeräte GmbH & Co. KG**

Am Gewerbepark 2

D-64823 Groß-Umstadt

Last Information Update: 11 / 2008

Ident.-No.: 76005517112008-6

