

# LUMEX®

*For The Quality Of Life®*

# Universal Homecare Bed

**Models:**

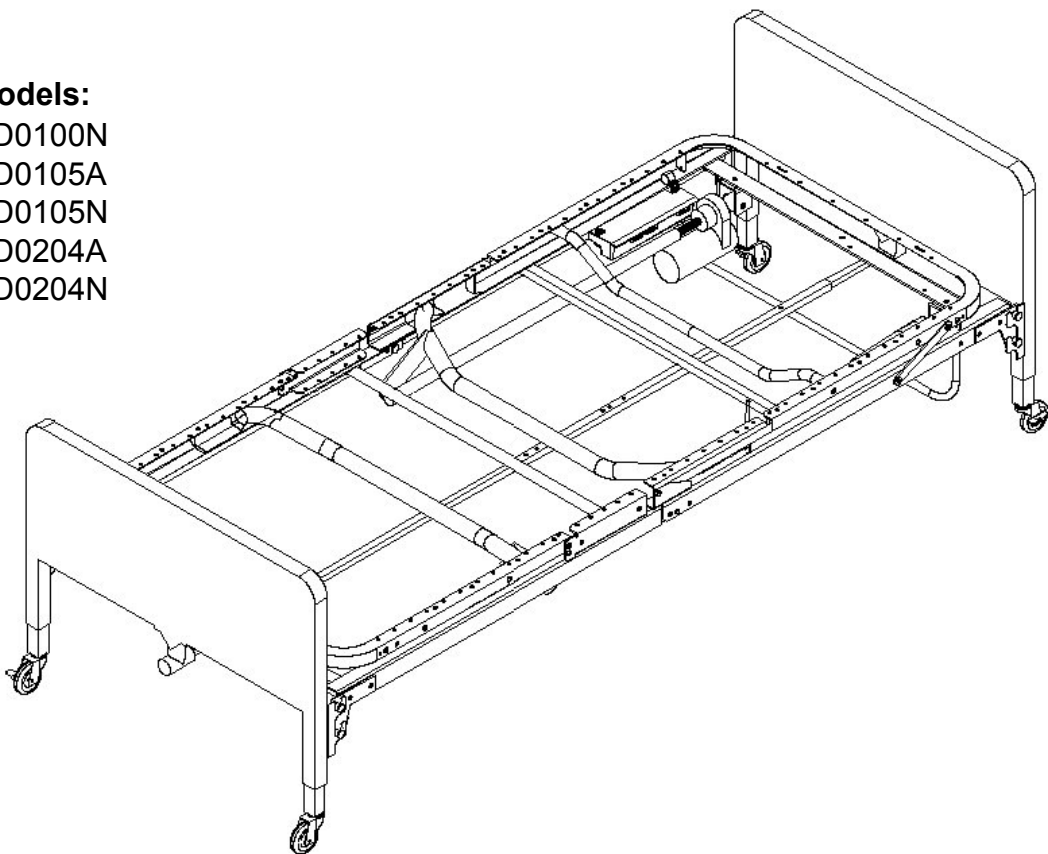
SD0100N

SD0105A

SD0105N

SD0204A

SD0204N



# User Manual

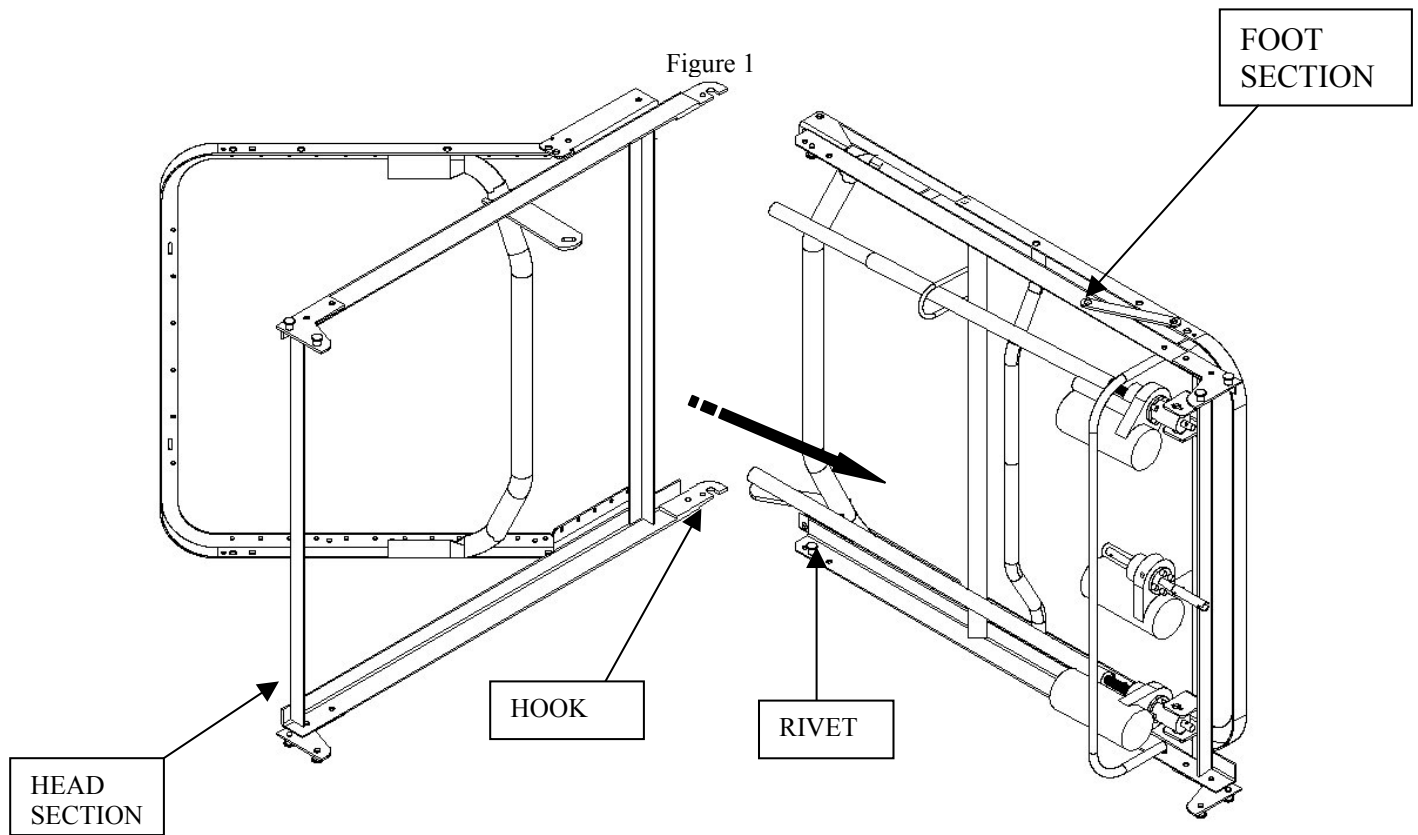


**GRAHAM-FIELD  
HEALTH PRODUCTS**

## WARNING / CAUTION SUMMARY

- ⚠ **WARNING: KEEP HANDS AND FEET CLEAR OF ALL MOVING PARTS.**
- ⚠ **WARNING: DO NOT ALLOW SMALL CHILDREN ON OR NEAR BED DURING OPERATION.**
- ⚠ **WARNING: DO NOT ALLOW THIS DEVICE TO BE OPERATED BY SMALL CHILDREN.**
- ⚠ **WARNING: WHEN OPERATING THE HI-LO, KNEE, OR BACK FUNCTION OF THE BED, ALWAYS ENSURE THAT THE INDIVIDUAL CONFINED TO THE BED IS POSITIONED PROPERLY WITHIN THE CONFINES OF THE BED. DO NOT LET ANY EXTREMITIES PROTRUDE OVER THE SIDE OR BETWEEN THE BED RAILS WHEN PERFORMING ANY FUNCTIONS.**
- ⚠ **CAUTION: DO NOT USE UNAUTHORIZED SIDE RAILS.**
- ⚠ **CAUTION: WARNING/CAUTION LABELS APPLIED TO THE BED OUTLINE HAZARDS OR UNSAFE PRACTICES THAT COULD RESULT IN PERSONAL INJURY AND/OR PROPERTY DAMAGE.**
- ⚠ **CAUTION: PENDANT CORD MUST BE ROUTED AND SECURED PROPERLY TO ENSURE THAT CORD DOES NOT BECOME ENTANGLED AND EVENTUALLY SEVERED DURING USE. MAKE SURE ELECTRIC CORDS DO NOT GET TANGLED AROUND THE BED, SIDE RAILS OR LEGS DURING NORMAL OPERATION OF THE BED.**
- ⚠ **CAUTION: WHEN USING NASAL OR MASKED TYPE ADMINISTERING EQUIPMENT, OXYGEN OR AIR TUBING MUST BE ROUTED AND SECURED PROPERLY TO ENSURE THAT TUBING DOES NOT BECOME ENTANGLED AND EVENTUALLY SEVERED DURING NORMAL OPERATION OF BED.**
- ⚠ **CAUTION: BEFORE OPERATING, INSURE THAT THE BED FRAME RIVETS ARE PROPERLY SEATED IN THE BED END HOOKS: OTHERWISE INJURY OR DAMAGE MAY RESULT.**
- ⚠ **CAUTION: KEEP ALL MOVING PARTS FREE OF OBSTRUCTIONS (I.E. BLANKETS/SHEETS, HEATING BLANKETS/PADS, TUBING, WIRING, AND OTHER TYPES OF PRODUCTS)**

# ASSEMBLY INSTRUCTIONS FOR HOMECARE BED



**NOTE: spring fabric not shown for clarity**

- Lay the head and foot section on their sides approximately 90° to each other (See Figure 1).
- Slide the sections together until the hook on the foot section catches the rivet on the head section.

## ASSEMBLY INSTRUCTIONS (CONT.)

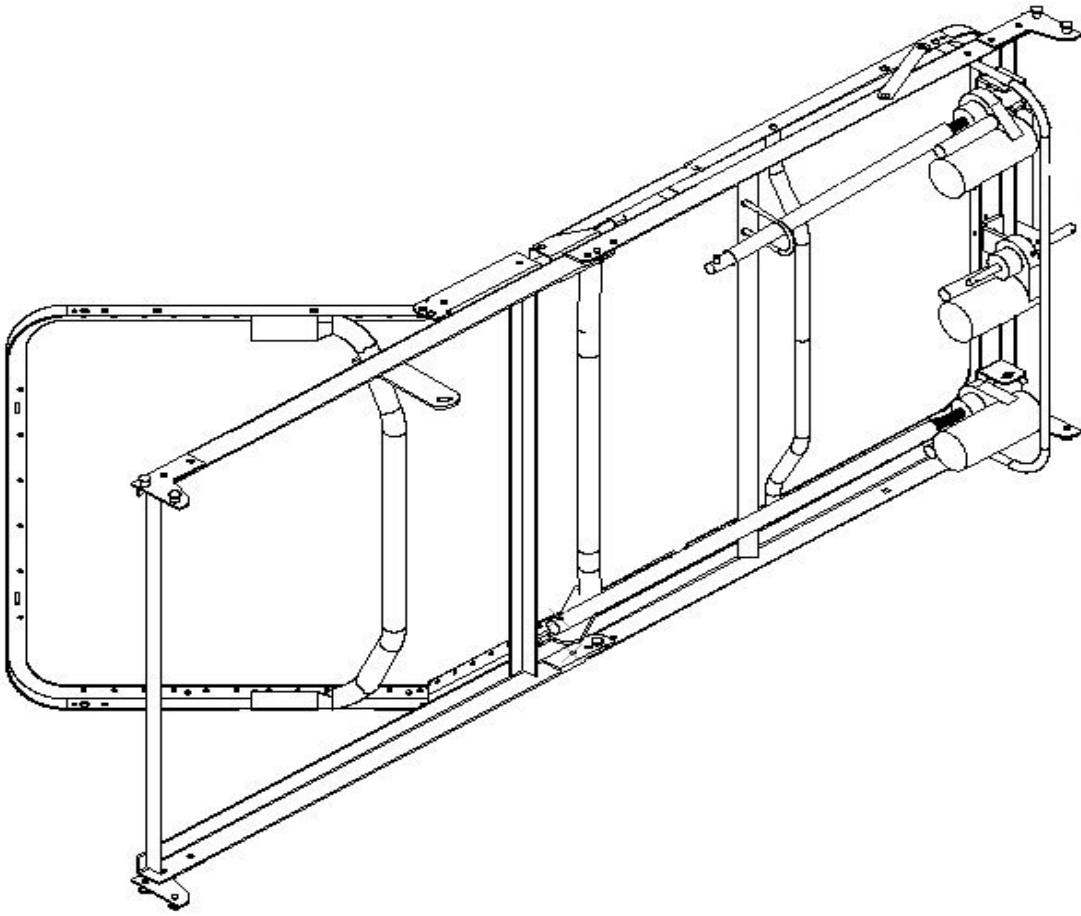
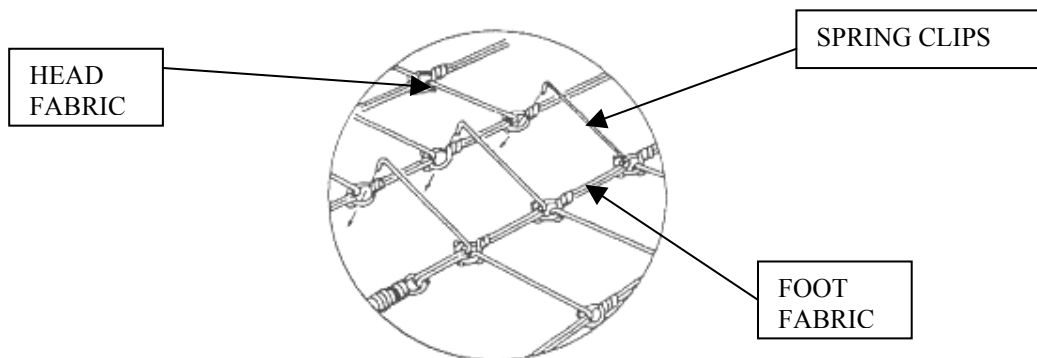


Figure 2

- Straighten sections and position as shown in figure 2.
- Position head wing as shown.



HEAD  
WING

Figure3

- Attach fabric halves-together using spring clips, which are attached to the foot fabric. (See Figure 3)

## ASSEMBLY INSTRUCTIONS (CONT.)

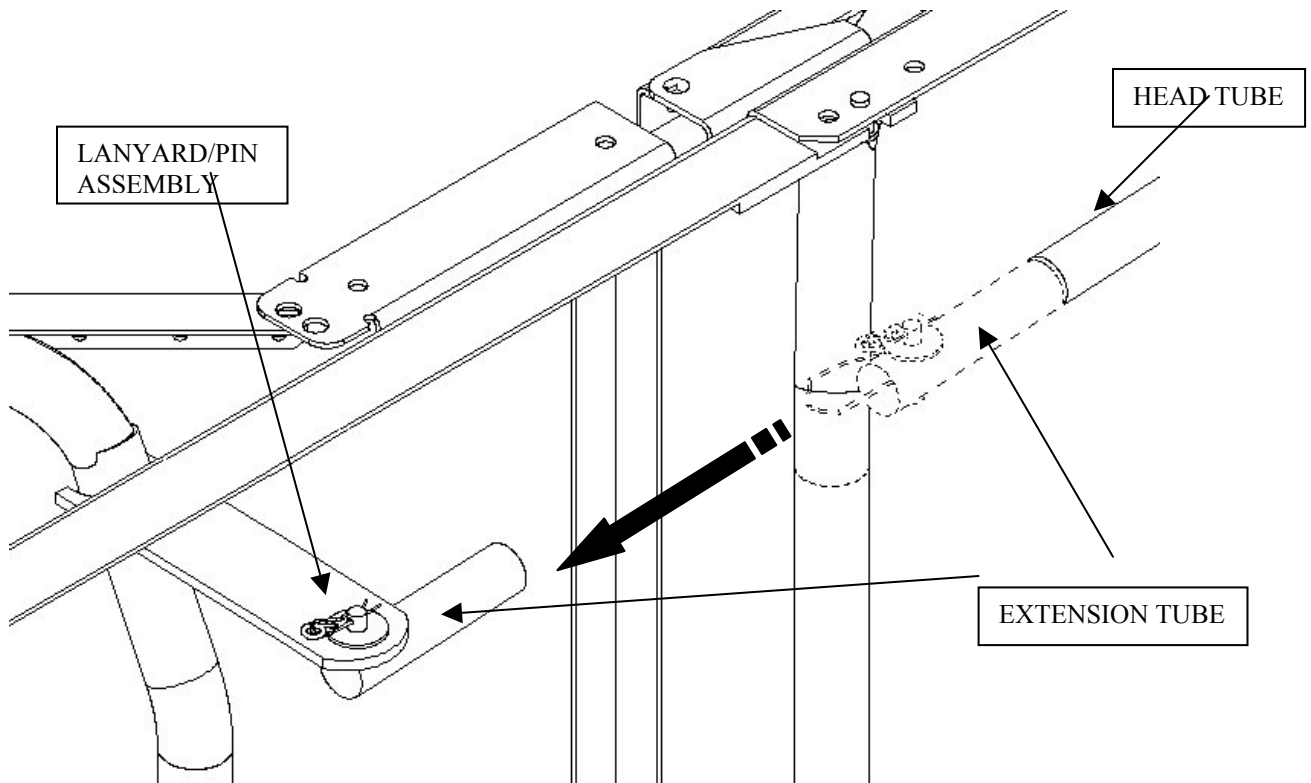


Figure4

Note: Insert clevis pin thru extension tube and into pivot lever.  
Install washer and attach cotter pin. (See Fig. 4).

## ASSEMBLY INSTRUCTIONS (CONT.)

### CASTER ASSEMBLY

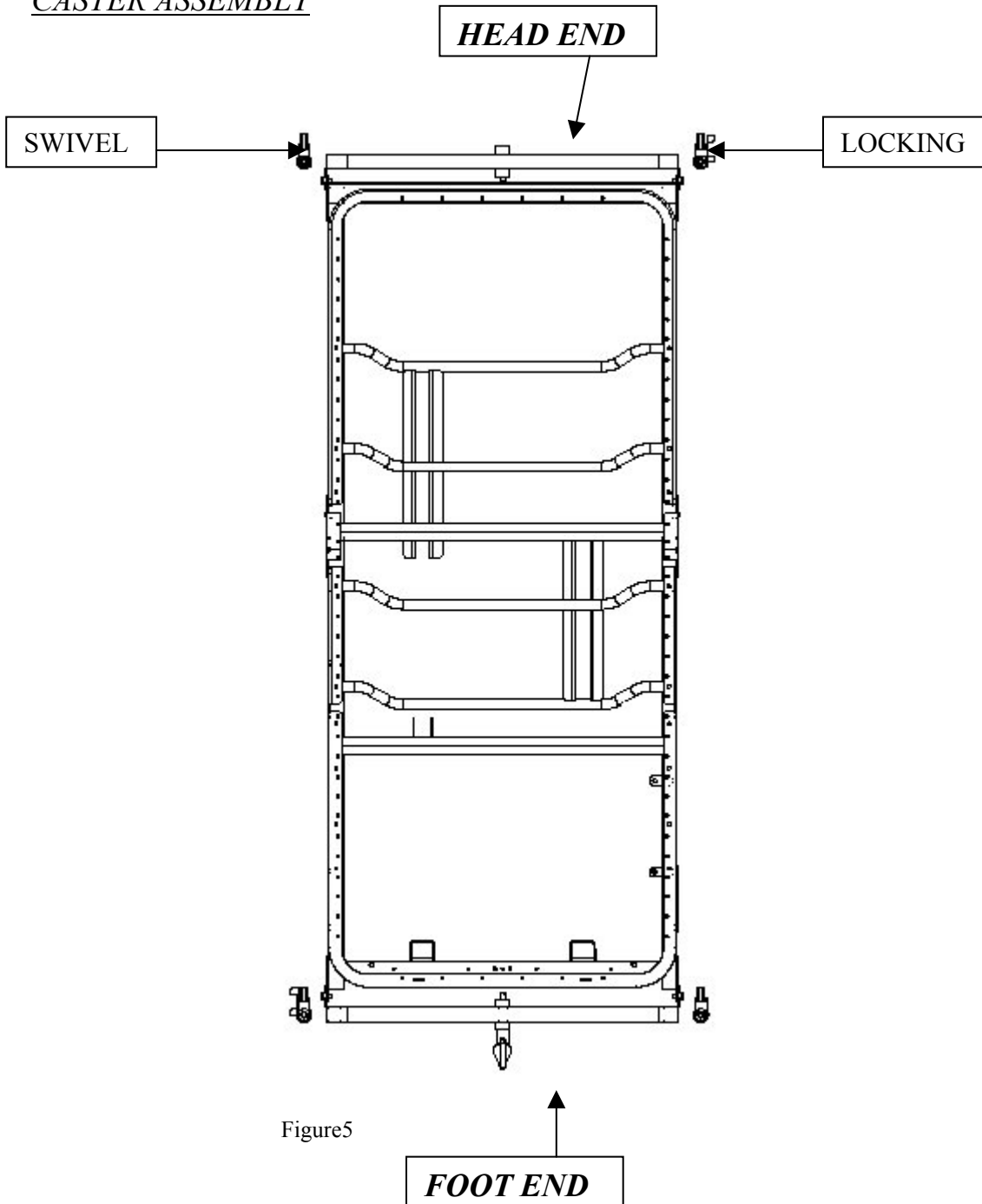


Figure5

- Insert casters in bed ends by lining up caster shaft with hole in bottom of bed end legs, and gently pressing in until secured. The two locking casters should be placed where accessible, preferably at opposite corners of the bed. (See Figure 5)

# ASSEMBLY INSTRUCTIONS

## BED END ASSEMBLY

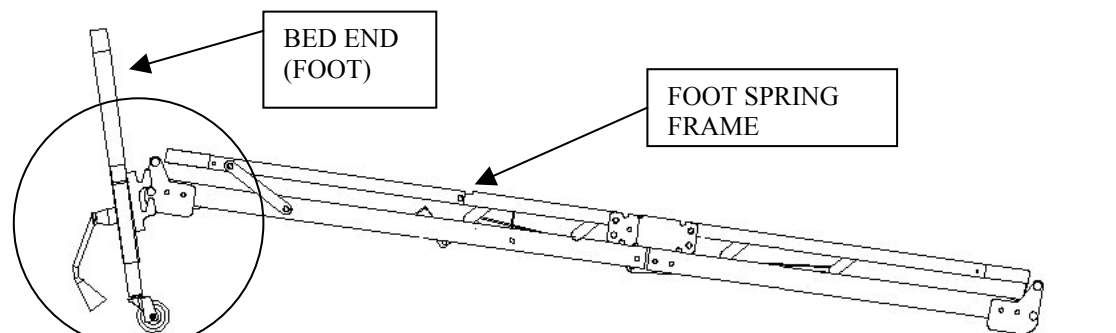


FIGURE 6

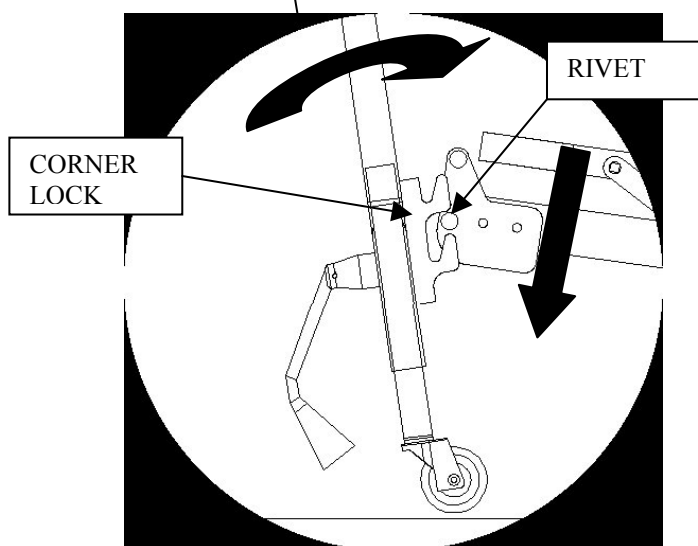


FIGURE 7

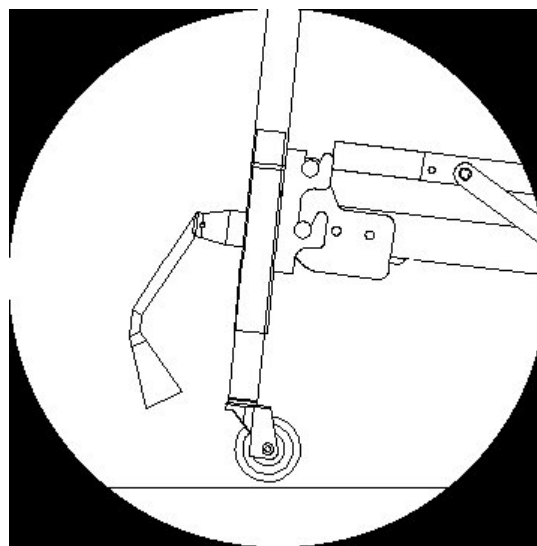


FIGURE 8 (COMPLETED ASSEMBLY)

- On full electric models; first compress and secure motor extension before assembly.
- Standing directly in front of the bed end, position it as close to the bed as possible.
- With one hand reach over end and lift up bed.
- Tilt the bed end slightly back toward you.
- Engage lower rivet slightly and tilt end toward bed.
- Lower bed into corner lock.
- Repeat for head end.

## ASSEMBLY INSTRUCTIONS (CONT.)

### *DRIVE SHAFT ASSEMBLY*

- The drive shaft is comprised of two sections – inner and outer tubes.
- Depress spring button and insert until desired hole is reached (determined by which bed, manual or electric hi/lo)

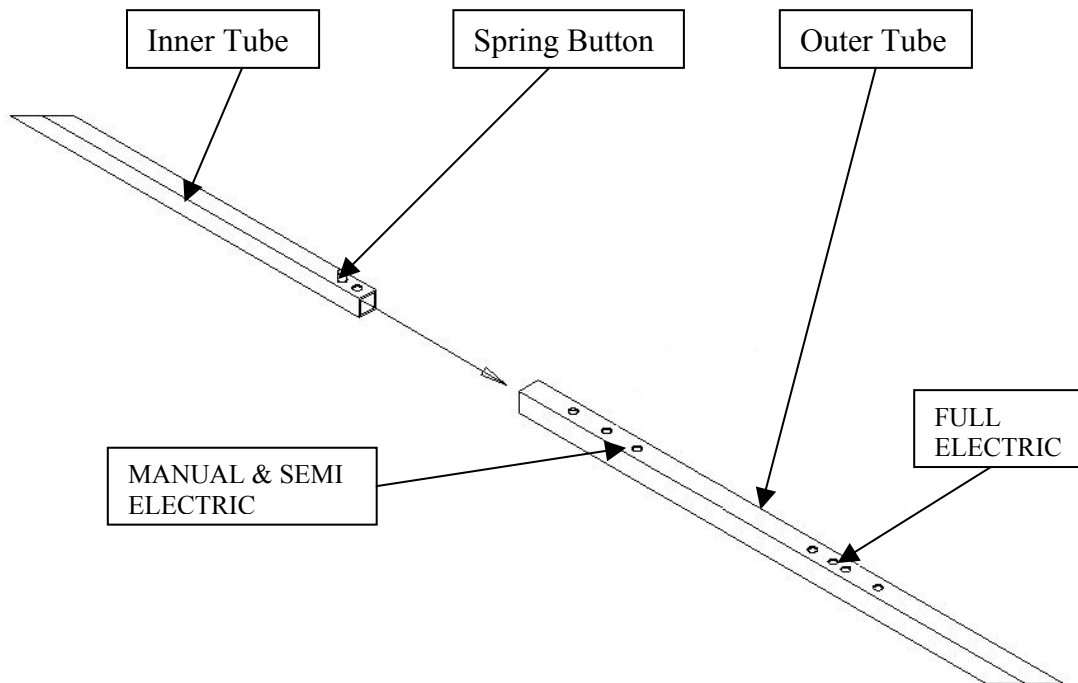
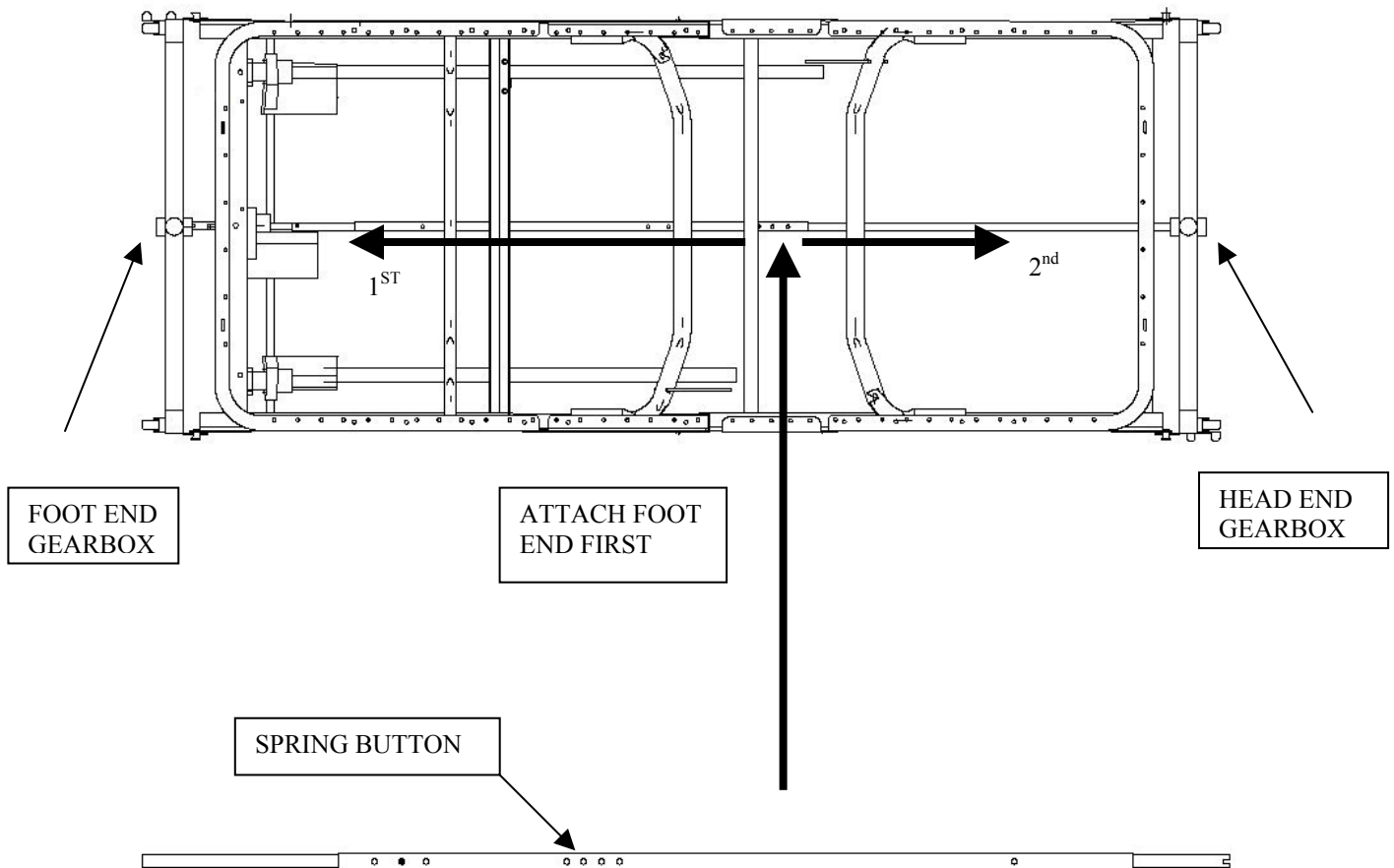


FIGURE 9



## ASSEMBLY INSTRUCTIONS (CONT.)

### DRIVE SHAFT ASSEMBLY

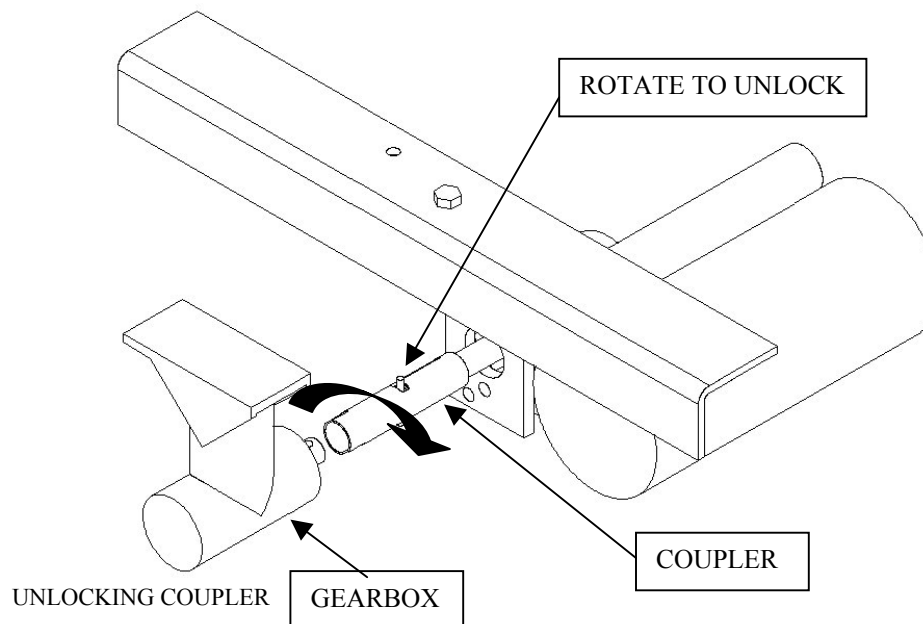
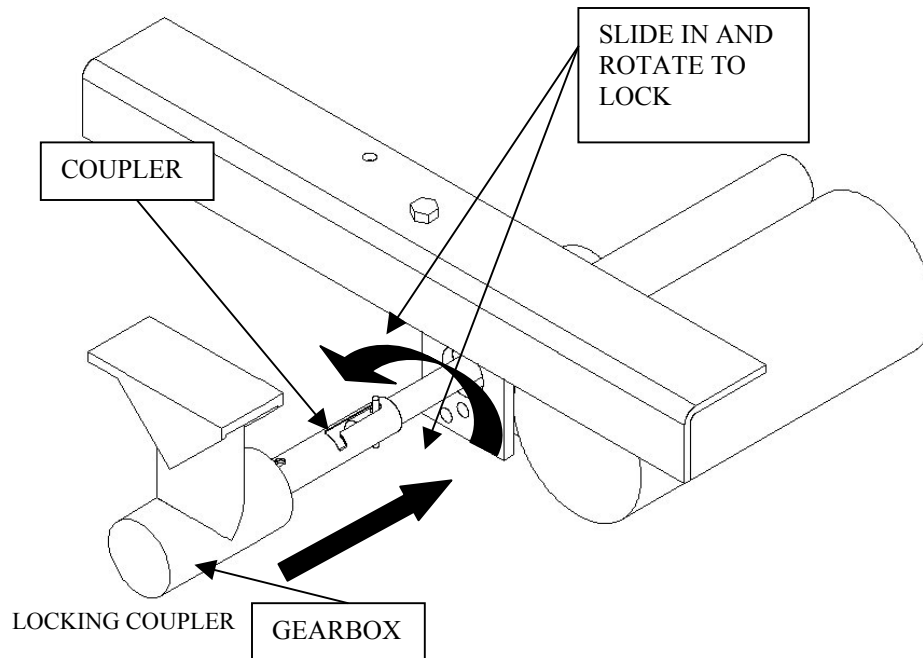


#### DRIVE SHAFT ASSEMBLY

- Connect the drive shaft assembly to the bed by first attaching either side of drive shaft to the foot end gearbox. Then attach other end to head end gearbox.

## ASSEMBLY INSTRUCTIONS (CONT.)

### FULL ELECTRIC HI/LO

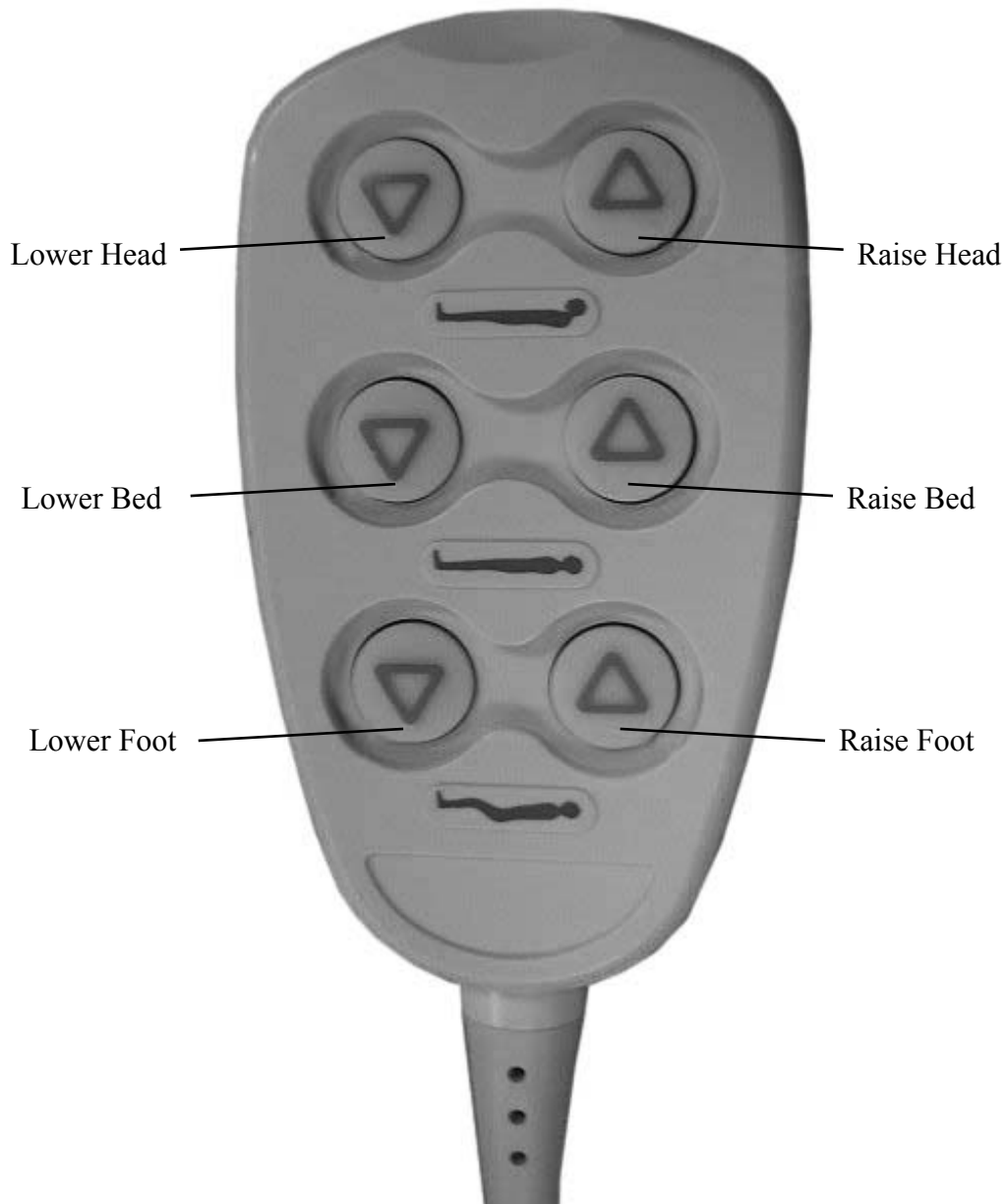


- On electric hi/lo model beds only – Release the spring-loaded coupler by gently rotating it clockwise until coupler engages with gearbox.

## BED OPERATION

### PENDANT

(Shown for Models SD0100A, SD0105A, & SD0204A)

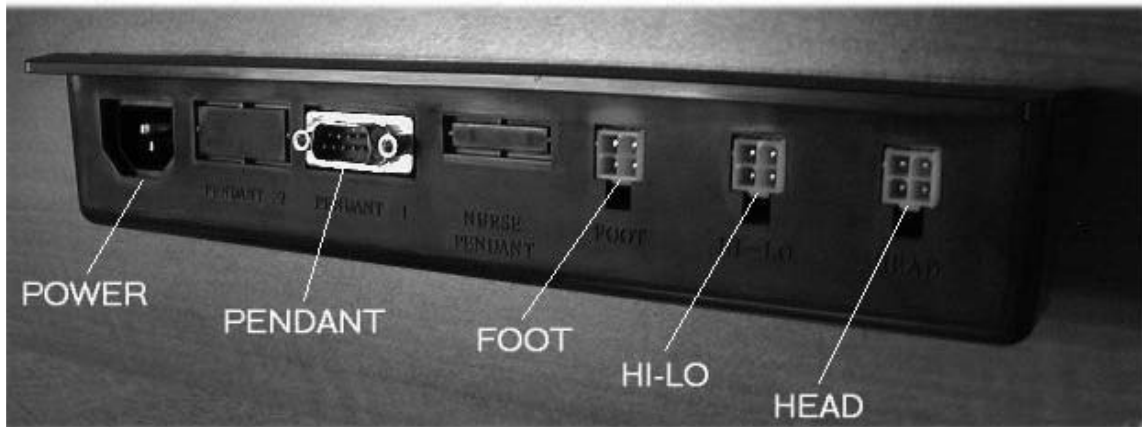


- Check all J-box connections and plug power cord into a properly grounded outlet (110volt, 60 Hz).
- In the event of a power failure, the emergency crank provided can be used to adjust the head, hi-lo, and foot sections of the bed.
- NOTE: Semi-Electric pendant does not have bed height adjustment (hi/lo) functions.

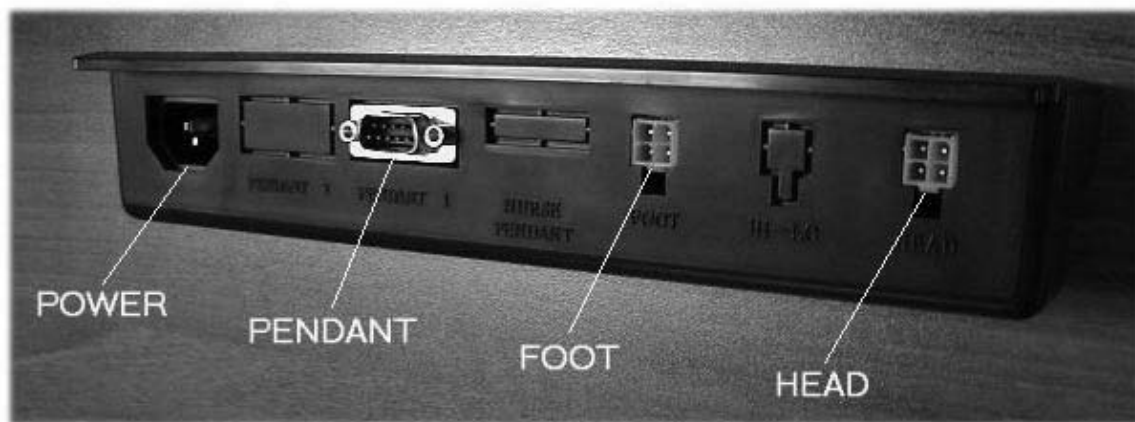
## BED OPERATION (CONT.)

### JUNCTION BOXES

(Shown for Models SD0100A, SD0105A, & SD0204A)



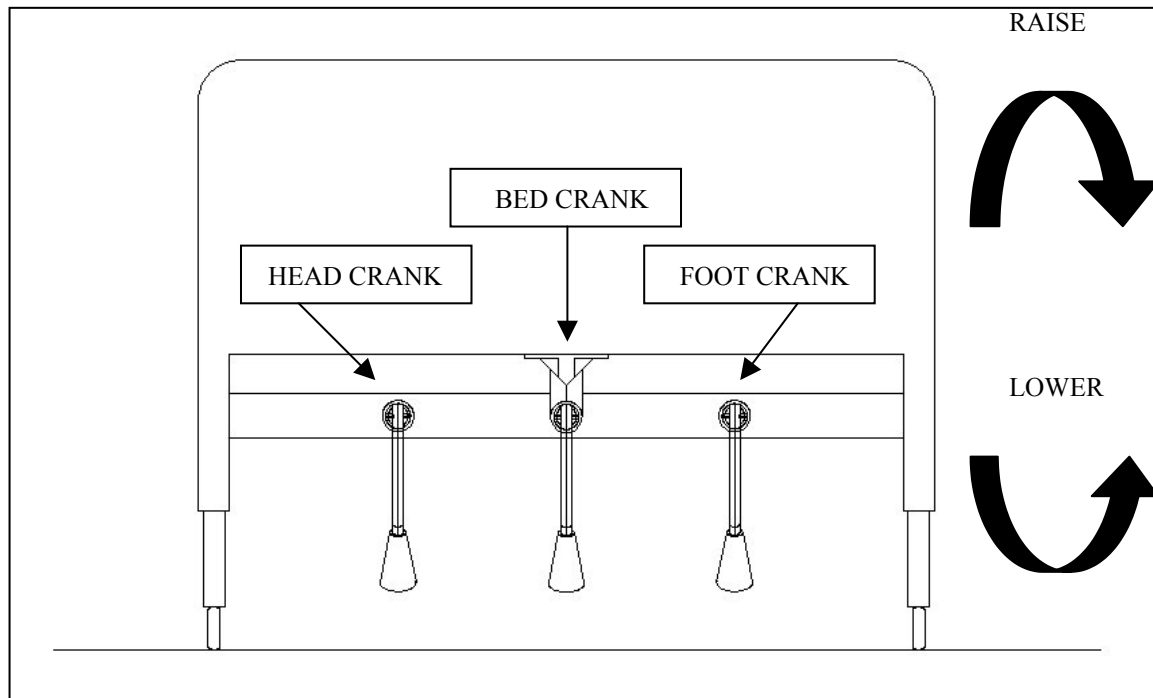
FULL ELECTRIC – JUNCTION BOX



SEMI ELECTRIC – JUNCTION BOX

## BED OPERATION (CONT.)

### MANUAL CRANK

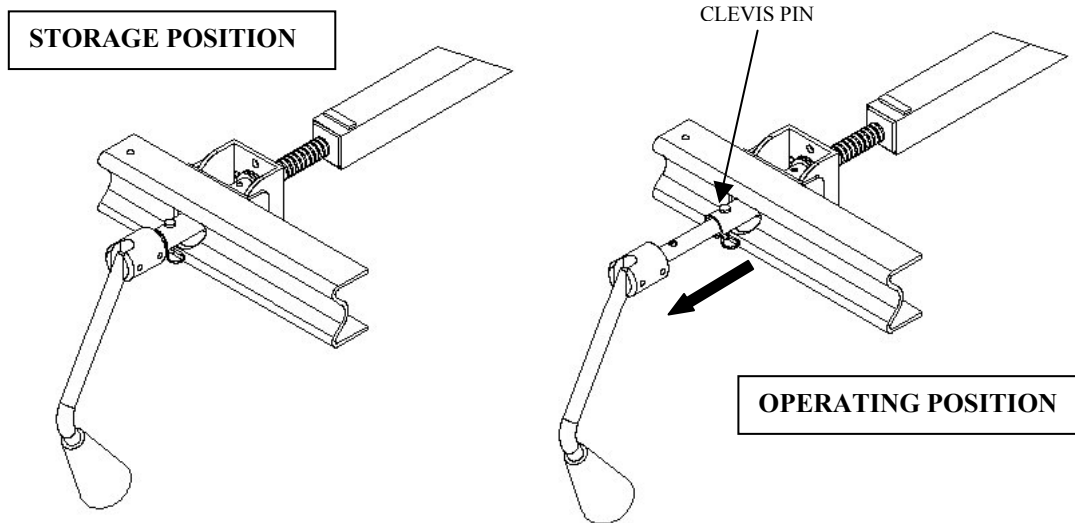


- *To raise bed* – Turn the center crank handle clockwise.
- *To raise headspring section* – Turn the left-hand crank handle clockwise.
- *To raise foot spring section* – Turn the right hand crank handle clockwise.
- *To lower bed* – Turn the center crank handle counter-clockwise.
- *To lower head spring section* – Turn the left-hand crank handle counter-clockwise.
- *To lower foot spring section* – Turn the right hand crank handle counter-clockwise.

## BED OPERATION (CONT.)

### MANUAL CRANK (cont.)

Note: After unpacking bed, remove handles from sleeping surface and attach as shown below.



HANDLE POSITION (STORAGE AND OPERATING)

### OPERATION

- Remove clevis pin and move handle to operating position: then reinsert clevis. The crank is now ready to operate.
- To store bed, reverse instructions above.

## BED OPERATION (CONT.)

### TRENDELENBERG POSITION

- Lower bed to its lowest height. Disengage the hi/lo drive shaft by compressing the spring fitting and removing the drive shaft from the motor or bed end.
- Raise the foot bed end using the hand pendant or crank. The head end will remain in the low position.

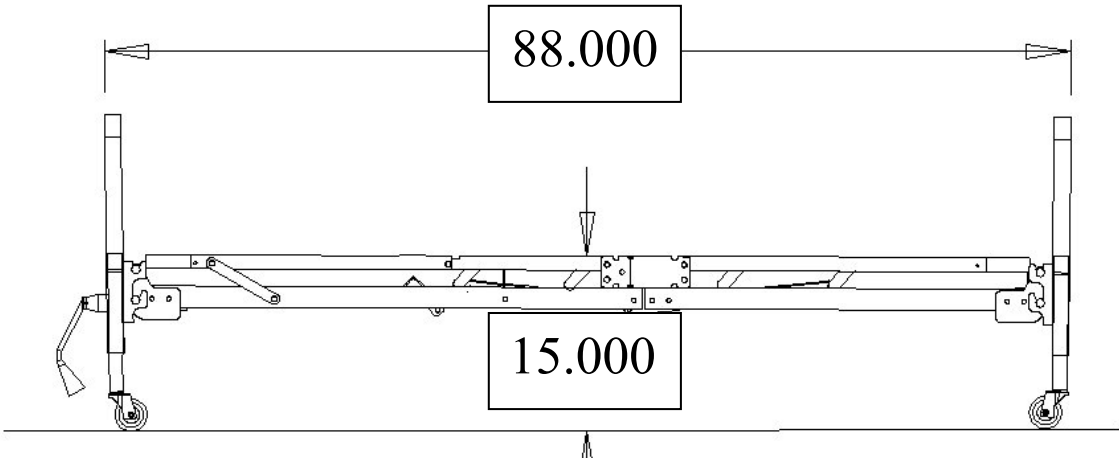
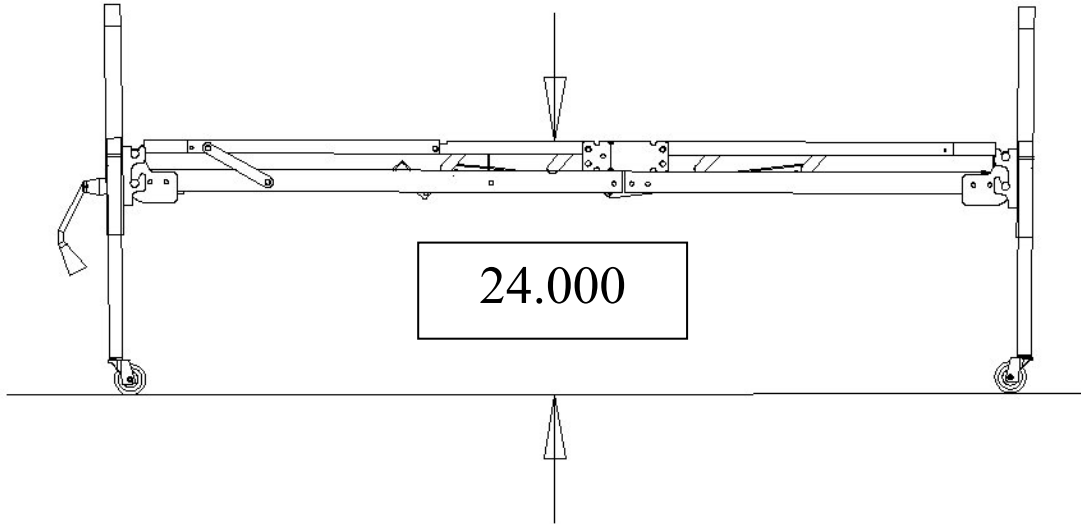
### REVERSE TRENDELENBERG

- Raise bed to its highest height. Disengage the hi/lo drive shaft by compressing the spring fitting and removing the drive shaft from the motor or bed end.
- Lower the foot bed end using the hand pendant or crank. The head end will remain in the high position.

# SPECIFICATIONS

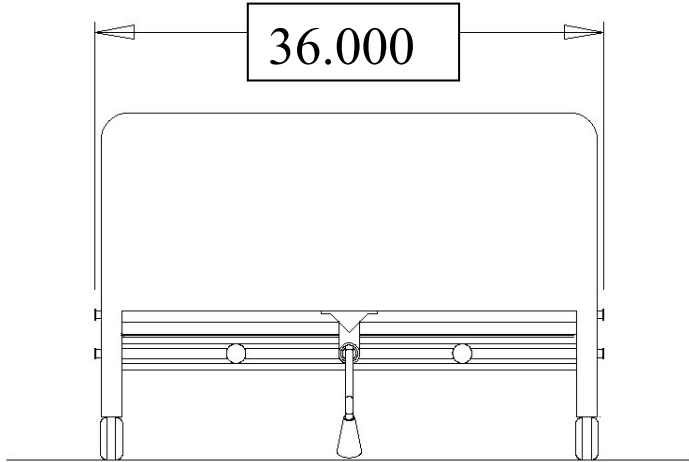
## DECK HEIGHT

BED HEIGHT (HIGH POSITION)



BED HEIGHT (LOW POSITION)/LENGTH

## DECK WIDTH





## SPECIFICATIONS (CONT.)

### *ELECTRICAL*

- UL 73, CSA approved
- MOTORS
  - 1/10 Hp, 115Vlts/60Hz , 1.6 amps

### *WEIGHT*

- Normal operating conditions: 450 lbs. evenly distributed.

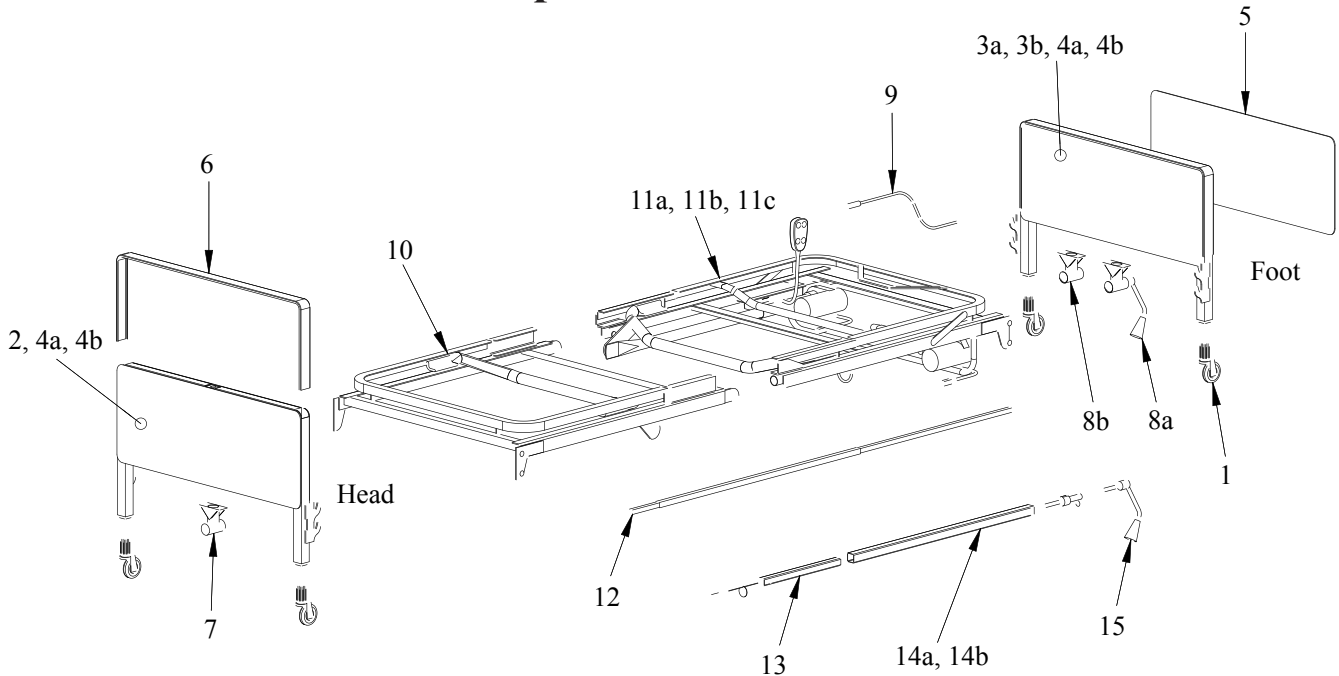
### *CONSTRUCTION*

- Frame: 10ga (.135) high strength, low alloy steel. (Roll formed)
- Sleeping surface: 11ga (.120) cold rolled steel

### *FINISH*

- 5 stage bath
  - 1) S21F acid bath (cleans grease and oil from metal).
  - 2) Fresh water rinse.
  - 3) QuiliPhos 20 phosphate coat (inhibits rust and helps maintain electrical charge during powder application).
  - 4) Fresh water rinse.
  - 5) QuiliRinse 404 (seals metal for powder coating).
- All parts are then coated with a colored epoxy powder and baked 35 minutes at 375 degrees. The powder coating finish is to be approximately 2.5 mils thick. The coating will be a smooth, uniform finish without runs, wrinkles, or grit.

# Universal Bed Replacement Parts

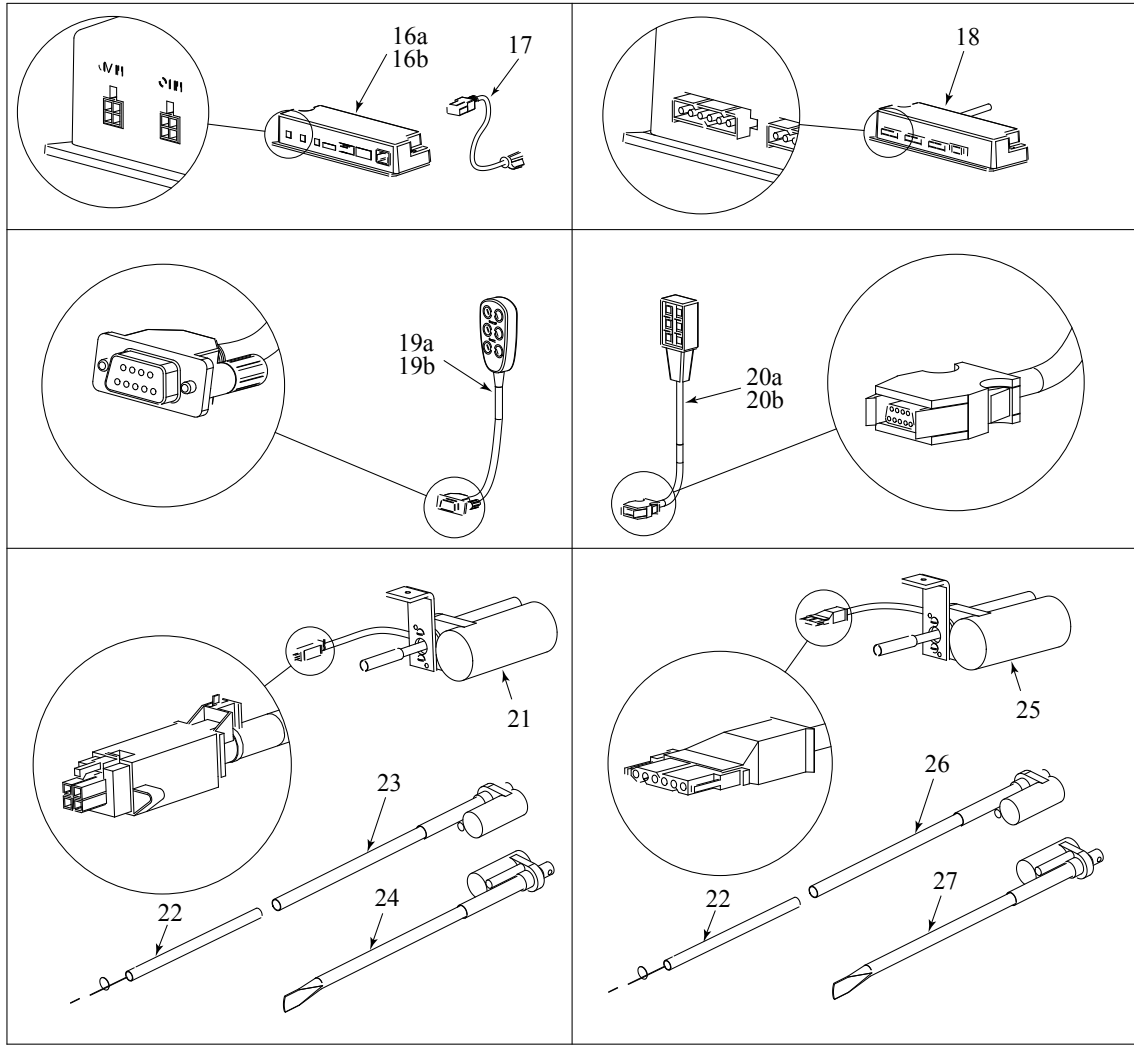


Item	Part Number	Description
1	HCB-CASTER	Caster And Socket Set (4 EA)
2	690-5001-000H	Bed End, Head
3a	690-5001-000E	Bed End, Foot, Full Elec
3b	690-5001-000F	Bed End, Foot, Manual & Semi Elec
4a	600-5001-000	Hd & Ft Bed End Set, Man & Semi Elec
4b	690-5002-000	Hd & Ft Bed End Set, Full Elec
5	554-2001-015-4	Bed End Panel, Walnut (4 Ea)
6	554-2001-059-2	Bed End Capping, Brown (2 Ea)
7	600-2001-910	Head Elbow
8a	600-2001-916	Foot Elbow, Manual, W/ Crank
8b	600-2001-912	Foot Elbow, Full Elec
9	554-2001-920	Emergency Crank
10	600-4100-901	Head Section Assy
11a	600-4100-902	Foot Section Assy, Manual
11b	600-5105-902	Foot Section Assy, Semi Elec
11c	600-5104-902	Foot Section Assy, Full Elec
12	554-2018-901	Hi Lo Rod
13	600-1000-915	Manual Extension Tube, Square
14a	600-0666-918	Screw & Tube Assem w/crank, Manual, Foot
14b	600-0666-917	Screw & Tube Assem w/crank, Manual, Head
15	600-1000-903	Head/Foot Manual Crank

# Universal Bed Electronics Replacement Parts

Bed Models: SD0105A, SD0204A

Bed Models: SD0105N, SD0204N



Item	Part Number	Description
16a	SD-CONT-SE	Control Box w/Power Cord, Semi Elec, Univ A
16b	SD-CONT-FE	Control Box w/Power Cord, Full Elec, Univ A
17	554-3001-115	Control Box Power Cord, Univ A
18	999-0530-003	Control Box w/Power Cord, Full Elec, Univ N
19a	600-1000-111	Pendant, Semi Elec, Univ A
19b	600-1000-112	Pendant, Full Elec, Univ A
20a	554-2001-111	Pendant, Semi Elec Univ N
20b	554-2001-112	Pendant, Full Elec, Univ N
21	600-3001-914	Hi/Lo Motor Assem, Univ A
22	600-1000-905	Head Motor Extension Tube Assy
23	600-3001-912	Head Motor Assem, Univ A
24	600-3001-913	Foot Motor Assem, Univ A
25	600-0666-914	Hi/Lo Motor Assem, Univ N
26	600-0666-912	Head Motor Assem, Univ N
27	600-0666-913	Foot Motor Assem, Univ N

# MAINTENANCE AND SAFETY CHECKS

*Once per year or between patient placements:*

## ELECTRONICS

- Check all controls to make sure all functions work properly.
  - Foot control
  - Head control
  - Hi/Lo (if applicable)
- Check all cables for damaged or frayed wires.
  - Power cord
  - Foot actuator wire
  - Head actuator wire
  - Hi/Lo actuator wire
  - Pendant cord
- Check to make sure all wires are routed and attached properly so they do not interfere with any moving parts.
- Check to make sure all plugs are fully inserted or attached.

## Bed frame and sleeping surface

- Visually check all welds
  - Head section
  - Knee section
  - Main Frame
- Check joints between sleeping surface sections for loose fasteners.

## Cleaning

- The metal parts of the bed are covered with a baked epoxy coating. Clean all coated parts with mild detergent and warm water. Periodically raise head and feet sections of the bed and remove dust from frame. Also, periodically remove mattress and clean mattress deck.

## Lubrication and Mechanical

- Lightly grease all actuator screw threads with white lithium grease.
- Lubricate all caster roller and swivel bearings with light machine oil.
- Check all bolts and tighten as needed.

## WARRANTY

- Two year warranty for defects in workmanship and materials of mechanical components, frame, and electronics.
- During the warranty period, defective items will be repaired or replaced at manufacturer's option at no charge.

**U.S.A., Corporate Headquarters:**

**Graham-Field Health Products**  
2935 Northeast Parkway  
Atlanta, Georgia 30360  
telephone: 800-347-5678, 770-447-1609  
fax: 800-726-0601, 678-291-3232

