

# ZOTAC® ZBOX



**USER'S MANUAL**

# ZOTAC ZBOX

## User's Manual



No part of this manual, including the products and software described in it, may be reproduced, transmitted, transcribed, stored in a retrieval system, or translated into any language in any form or by any means, except documentation kept by the purchaser for backup purposes, without the express written permission of ZOTAC.

Products and corporate names mentioned in this manual may not be registered trademarks or copyrights of their respective companies, and are used for identification purposes only. All trademarks are the property of their respective owners.

Every effort has been made to ensure that the contents of this manual are correct and up to date. However, the manufacturer makes no guarantee regarding the accuracy of its contents, and reserves the right to make changes without prior notice.

### **CAUTION:**

Risk of explosion if the battery is replaced with an incorrect type. Batteries should be recycled where possible. Disposal of used batteries must be in accordance with local environmental regulations.

## Table of Contents

<b>Product Specifications</b>	<b>3</b>
<b>Safety information</b>	<b>4</b>
Setting up your system	4
Care during use	4
<b>Welcome</b>	<b>5</b>
Package contents	5
<b>Getting to know your ZOTAC ZBOX</b>	<b>6</b>
Front view	6
Rear view	7
<b>BIOS settings of specific functions</b>	<b>8</b>
How to disable the ring LED indicator	8
How to enable USB2.0 charge (for S3/S4/S5 status)	10
High Current/Fast Charging USB ports	12
<b>Installing Hardware inside ZOTAC ZBOX</b>	<b>13</b>
Installing a memory module	13
Removing the memory module	14
Installing a hard disk	15
<b>Setting up your ZOTAC ZBOX</b>	<b>16</b>
<b>Positioning your ZOTAC ZBOX</b>	<b>18</b>
Installing the stand	18
Installing your ZOTAC ZBOX to a monitor	18
IR receiver	19
Remote control	19
Function keys	19
Lithium cell installation	20
<b>Installing drivers and software</b>	<b>21</b>
Installing an operating system	21
Installing system drivers	21
<b>Using your ZOTAC ZBOX</b>	<b>22</b>
Configuring wireless connection	22
Configuring wired connection	22
Using a static IP	22
Using a dynamic IP (PPPoE connection)	23
Configuring audio output via an HDMI device	23

## Product Specifications

### ❑ Chipset

- ❖ Intel® HM65 Express

### ❑ Product Size

- ❖ 188mm x 188mm x 44mm

### ❑ Microprocessor support

- ❖ Intel® Core™ i3 2330M (dual-core, 2.2 GHz)
- ❖ Optional for other 2nd Generation Intel® Core Processors, max TDP: 35W

### ❑ Operating systems:

- ❖ Supports Windows 7 32bit/64bit

### ❑ System Memory support

- ❖ Two 204-pin SO-DIMMs DDR3-1333
- ❖ Up to 16 GB of memory

### ❑ USB Ports

- ❖ Two USB 3.0 ports on the back panel
- ❖ Four USB 2.0 ports (one front panel port, one top panel port and two rear panel ports)

### ❑ Onboard Serial ATA

- ❖ SATA 6.0 Gb/s transfer rates
- ❖ Supports one 2.5-inch SATA HDD or SSD (support the device with max 9.5mm height)

### ❑ Onboard LAN

- ❖ Supports 10/100/1000 Mbps operation
- ❖ Supports IEEE 802.3

### ❑ WiFi/Bluetooth support

- ❖ Compliant with IEEE802.11n Draft 2.0 standard
- ❖ High speed wireless connection and enhanced wireless security
- ❖ Fully qualified Bluetooth v3.0

### ❑ Onboard Audio

- ❖ Onboard 8-channel Digital Audio
- ❖ Stereo Analog Audio

### ❑ Green Function

- ❖ Supports ACPI (Advanced Configuration and Power Interface)


### ❑ Onboard Graphics support

- ❖ Intel® HD Graphic/ Intel® HD Graphic 2000/ Intel® HD Graphic 3000 (subject to actual SKU configuration)
- ❖ HDMI & DVI-I output (VGA compatible with adapter)

## Safety information

Your ZOTAC ZBOX is designed and tested to meet the latest standards of safety for information technology equipment. However, to ensure your safety, it is important that you read the following safety instructions.

### Setting up your system

- ❖ Read and follow all instructions in the documentation before you operate your system.
  - ❖ Do not use this product near water or a heat source such as a radiator.
  - ❖ Set up the system on a stable surface with the provided stand. Never use the system alone without the stand.
  - ❖ Openings on the chassis are for ventilation. Do not block or cover these openings. Make sure you leave plenty of space around the system for ventilation. Never insert objects of any kind into the ventilation openings.
  - ❖ Use this product in environments with ambient temperatures between 0°C and 35°C.
-  If you use an extension cord, please use the UL listed cord and make sure that the total ampere rating of the devices plugged into the extension cord does not exceed its ampere rating.

### Care during use

- ❖ Do not walk on the power cord or allow anything to rest on it.
- ❖ Do not spill water or any other liquids on your system.
- ❖ When the system is turned off, a small amount of electrical current still flows. Always unplug all power, modem, and network cables from the power outlets before cleaning the system.
- ❖ If you encounter the following technical problems with the product, unplug the power cord and contact a qualified service technician or your retailer.
  - The power cord or plug is damaged.
  - Liquid has been spilled into the system.
  - The system does not function properly even if you follow the operating instructions.
  - The system was dropped or the cabinet is damaged.
  - The system performance changes.

## Welcome

Congratulations on your purchase of the ZOTAC ZBOX. The following illustration displays the package contents of your new ZOTAC ZBOX. If any of the below items is damaged or missed, contact your retailer.

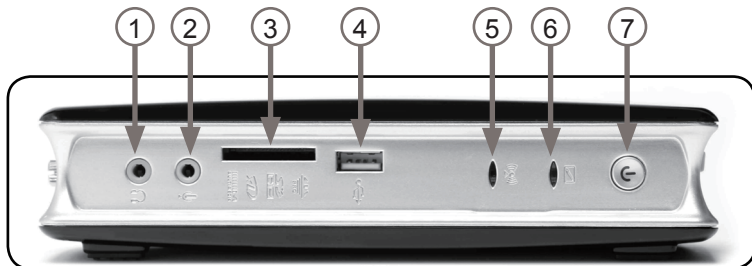
### Package contents

- 1 x ZOTAC ZBOX
- 1 x Stand
- 1 x VESA mount
- 1 x AC Adapter
- 1 x DVI-to-VGA Adapter
- 1 x Power Cord
- 1 x WiFi Antenna
- 1 x Remote Control with 2 x CR2032 batteries
- 1 x USB Extended IR Receiver for Remote Control
- 1 x Support DVD
- 1 x User Manual & Warranty Card
- 1 x Quick Start Guide



## Getting to know your ZOTAC ZBOX

### Front view



Refer to the diagram below to identify the components on this side of the system

#### 1. Headphone/Audio Out jack

The stereo headphone jack (3.5mm) is used to connect the system's audio out signal to amplified speakers or headphones.

#### 2. Microphone jack

The microphone jack is designed to connect the microphone used for video conferencing, voice narrations or simple audio recordings.

#### 3. Memory card slot

The built-in memory card reader reads MMC/SD/SDHC/MS/MS Pro/XD cards used in devices like digital cameras, MP3 players, mobile phones and PDAs.

#### 4. USB 2.0 port

The USB (Universal Serial Bus) port is compatible with USB devices such as keyboards, mice, cameras and hard disk drives.

#### 5. WiFi LED

The WiFi LED blinks when data is being transferred over WiFi.

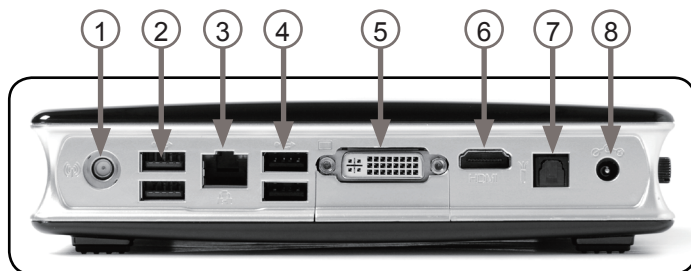
#### 6. Hard disk LED

The hard disk LED blinks when data is being written into or read from the hard disk drive.

#### 7. Power switch

The power switch allows powering ON and OFF the system

## Rear view



Refer to the diagram below to identify the components on this side of the system.

### 1. WiFi antenna connector

The WiFi antenna connector supports WiFi antenna module.

### 2. USB 3.0 ports

The USB 3.0 port supports the SuperSpeed USB 3.0 devices and is backwards compatible with USB 2.0/1.1 devices. Use this port for USB 3.0 devices for maximum performance with USB 3.0 compatible devices.

### 3. LAN port

The eight-pin RJ-45 LAN port supports standard Ethernet cable for connection to a local network.

### 4. USB 2.0 ports

The USB (Universal Serial Bus) port is compatible with USB devices such as keyboards, mice, cameras and hard disk drives. They also support USB IR receiver (please refer to page 14).

### 5. DVI port

The DVI port supports connection to analog monitors and displays.

### 6. HDMI port

The HDMI (High Definition Multimedia Interface) port supports a Full-HD device such as an LCD TV or monitor to allow viewing on a larger external display.

### 7. Optical (SPDIF OUT) jack

Plug an optical cable into this jack for digital audio transfer.

### 8. Power input (DC19V)

The supplied power adapter converts AC power to DC power for use with this jack. Power supplied through this jack supplies power to the PC. To prevent damage to the PC, always use the supplied power adapter.

☞ The power adapter may become warm to hot when in use. Do not cover the adapter and keep it away from your body.



## BIOS settings of specific functions

ZOTAC ZBOX has some specific functions which can be enabled or disabled in BIOS settings, such as LED indicator, and USB2.0 charge.

### How to disable the ring LED indicator

1. Turn on the ZBOX mini-PC, then press <Delete> to enter the BIOS SETUP UTILITY.
2. Use the arrow keys to navigate to the **Chipset** menu and select **Onboard Device Configuraion**.



- Press <Enter> to display the **Onboard Device Configuration** and navigate to **Back Light**.



- Press <Enter> and select **Disabled**.



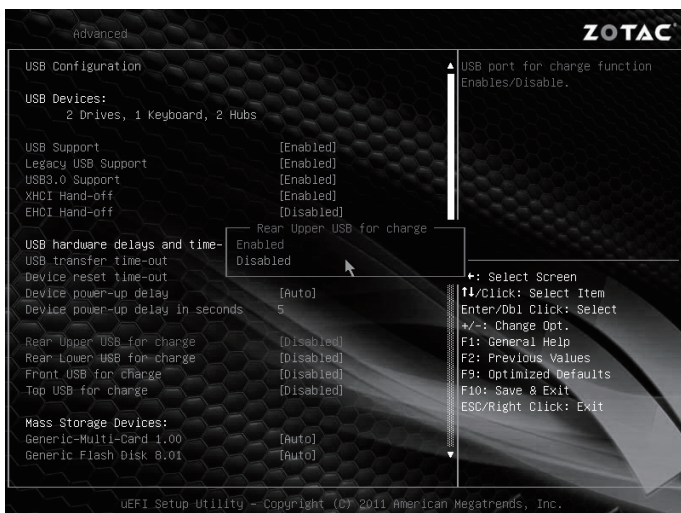
- Press F10 to save the configuration and exit. The PC will reboot.

## How to enable USB2.0 charge (for S3/S4/S5 status)

1. In Advanced menu, select **USB Configuration** and press <Enter>.



2. Use the arrow keys to enter the item **Rear Upper/Rear Lower/Front/Top USB** for charge, and select **Enabled**.

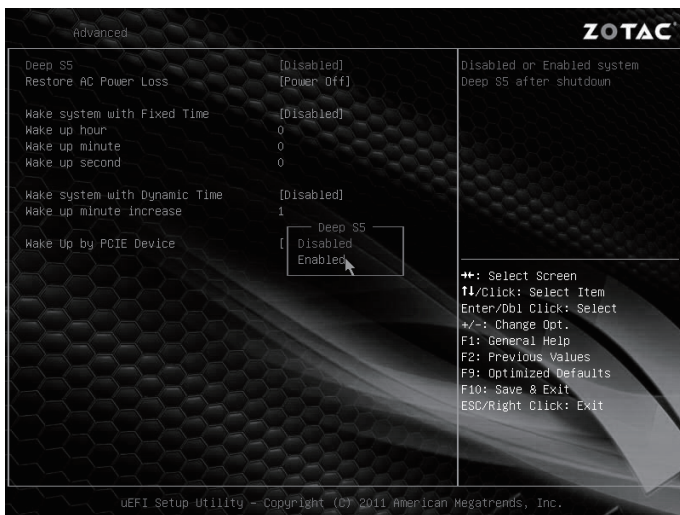


Note: Before charging via USB2.0 in S5 status, please make sure the Deep S5 is disabled.

1. In Advanced menu, select **Wake Up Event Settings** and press <Enter>.



2. Use the arrow keys to enter the item **Deep S5**, and select **Disabled**.



## **High Current/Fast Charging USB ports**

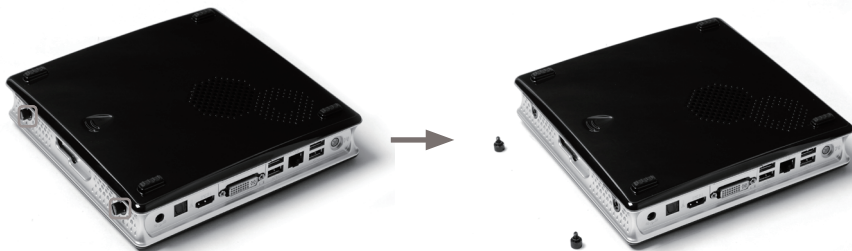
If you want a faster, less restricted way of charging your mobile phone and tablet from all USB2.0 ports, simply install the USB Charging driver (for Windows7) which allows you to charge a USB devices quickly and even supports continuous charging when your mini-PC enters Standby mode (S1), Suspend to RAM (S3), Hibernation mode (S4) or Power off mode (S5). With this USB Charging driver installed, you can enjoy marvelous charging experience than ever.

Please visit the ZOTAC website “Support” -> “Download” to get the USB Charging driver for your mini-PC: <http://www.zotac.com>

## Installing Hardware inside ZOTAC ZBOX

Before installing hardware, please follow the instructions below to remove the cover of your ZOTAC ZBOX.

1. Unscrew.

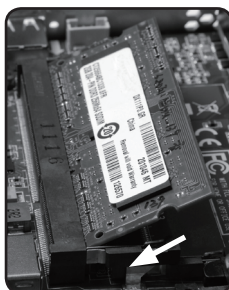


2. Gently remove the cover as the image below.



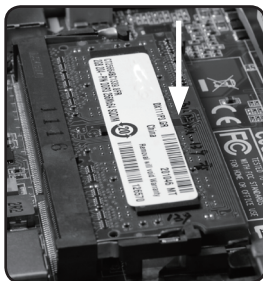
## Installing a memory module

1. Locate the SO-DIMM memory slots and insert a SO-DIMM memory module into the slot at a 45 degree angle.



Note: When installing two SO-DIMM memory modules, please insert a module into the lower slot first.

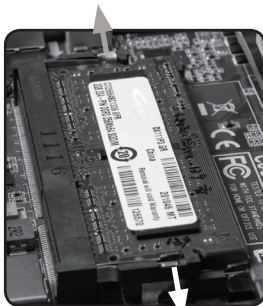
2. Gently press down on the memory module until it locks into place by the arms of the memory slot.



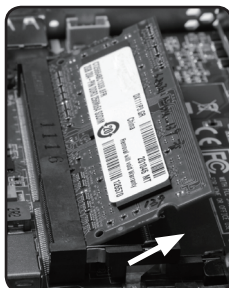
Note: This ZOTAC ZBOX accommodates two DDR3 SO-DIMM memory modules. You must install at least one module in one of the two slots.

## Removing the memory module

1. Locate the SO-DIMM memory slot and gently press the two arms securing the memory module outwards, as shown in the image below, to release the memory module.



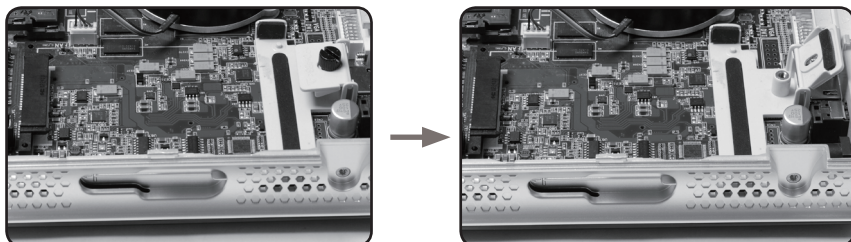
2. Remove the memory module from the slot at a 45-degree angle.





## Installing a hard disk

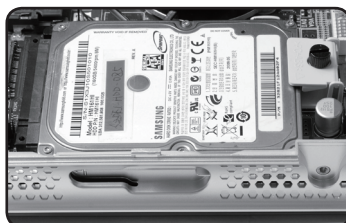
1. Locate the hard disk bracket and remove the thumb screw.
2. Lift up on the plastic flap.



3. Insert a 2.5-inch SATA hard disk into the bracket at a 45 degree angle and gently slide into the connector.



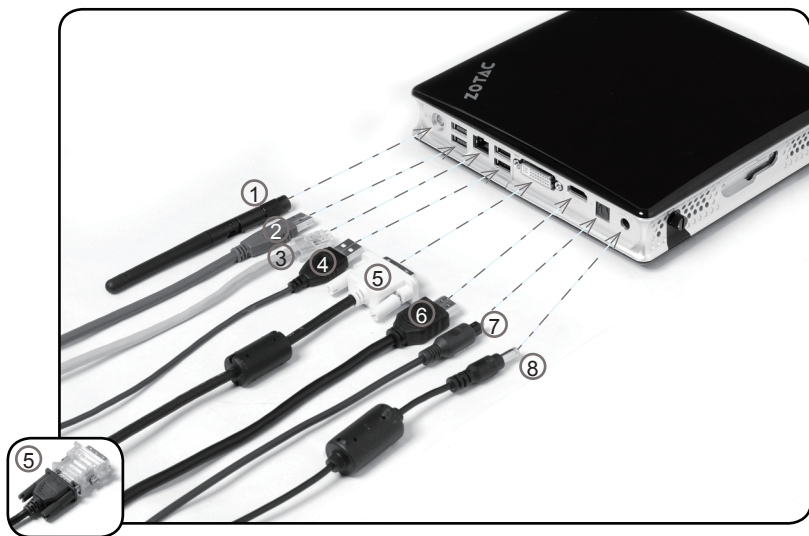
4. Lower the plastic flap and reinstall thumb screw.





## Setting up your ZOTAC ZBOX

You need to connect peripherals before using your ZOTAC ZBOX.



### 1. Connecting a WiFi antenna module

Connect a WiFi antenna module to the WiFi antenna connector.

**Note:** When using the ZOTAC ZBOX, please be sure that the WiFi antenna module is connected to the WiFi antenna connector for the better performance of the WiFi/Bluetooth.

### 2. Connecting to USB 3.0 devices

Connect USB 3.0 devices such as external hard drives, SSDs and flash drives to the USB 3.0 port on the system rear panel.

### 3. Connecting to a network device

Connect one end of a network cable to the LAN port on the system rear panel and the other End to a hub or switch.

### 4. Connecting to USB 2.0 devices

Connect USB devices like wired/wireless keyboards (varying with areas), mouse devices and printers to the USB ports on the system rear panel.

**5. Connecting to a DVI or VGA display**

Connect one end of a DVI/VGA cable to an HDTV or monitor, and the other end to the DVI port on the system rear panel. If using a VGA connection, please use included DVI-to-VGA adapter.

**6. Connecting to an HDMI display**

Connect one end of an HDMI cable to the HDMI port on the system rear panel and the other end to a HDMI-compatible display such as an HDTV or monitor.

**7. Connecting an optical S/PDIF output**

Connect a digital audio device via optical S/PDIF output.

**8. Turning on the system**

Connect the supplied AC adapter to the DC IN jack on the system rear panel and then press the power switch on the front panel to turn on the system.

- ☞ When your ZOTAC ZBOX is not in use, unplug the power adapter or switch off the AC outlet to save on power consumption.

## Positioning your ZOTAC ZBOX

- ☞ Do not position the ZOTAC ZBOX where the ventilation holes are covered. To guarantee proper use, leave 4 inches (10 cm) spacing in front of the ventilation holes.
- ☞ ZOTAC mini-PC system provide ample connectivities in tiny space, please choose connectors and cables in appropriate size to avoid interference.

## Installing the stand

Erect your ZOTAC ZBOX with the supplied stand. To do so :

1. Locate the screw hole on the bottom of the ZOTAC ZBOX.
  2. Align the stand screw to the PC screw hole and then secure the Stand to the PC with a coin.
- ☞ Do not place your ZOTAC ZBOX on the desktop without the stand.



## Installing your ZOTAC ZBOX to a monitor

You can also install your ZOTAC ZBOX to the back of a monitor. To do so:

1. Secure the VESA mount to your monitor with four screws (HNM/M4x8).
  2. Place your ZOTAC ZBOX on the VESA mount noting the correct alignment and then secure the PC to the VESA mount with a coin.
- ☞ To fasten the VESA mount, your monitor must comply with VESA75 Or VESA100 standard.
  - ☞ Mechanical Loading Stability - Mounting of the equipment on the backside of the monitor should be lay this equipment on a reliable surface when install. A drop or fall could cause injury.
  - ☞ If the total weight of your monitor and ZOTAC ZBOX is over 7kg, the system may be unstable.



## IR receiver

Enjoy more of your favorite entertainment by MCE (Media Center Edition) remote controller with USB IR receiver (connecting to USB 2.0 port).



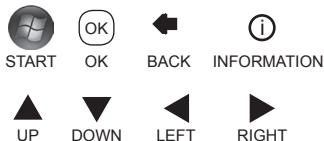
External USB IR receiver

## Remote control

ZOTAC ZBOX is shipped with a remote control. Follow the instructions below to use the remote control.

### Function keys

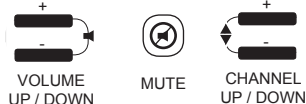
#### Navigation Buttons



#### Shortcut Buttons



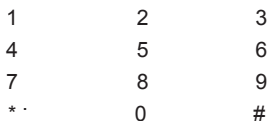
#### Audio and Video Buttons



#### Playback Buttons



#### Numeric Keypad



CLEAR

ENTER

#### Teletext Buttons




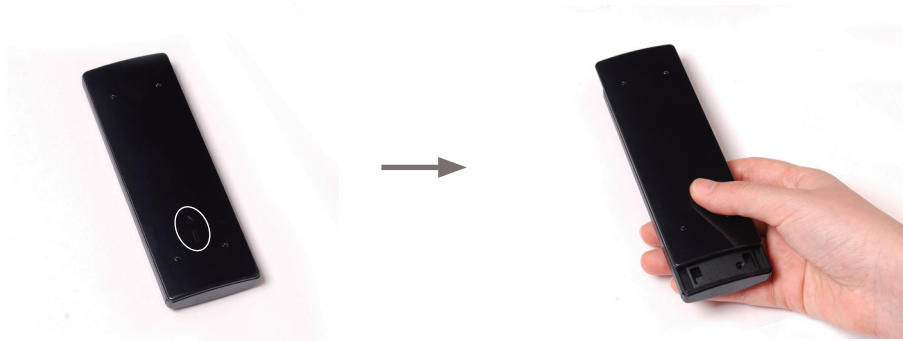
TELETEXT



**Note:** Some remote control functions listed above are only available with the relative hardware equipments. If the hardware equipments you adopt are not compatible with the system, you are unable to use these functions. This product is designed to meet MCE standards.

## Lithium cell installation

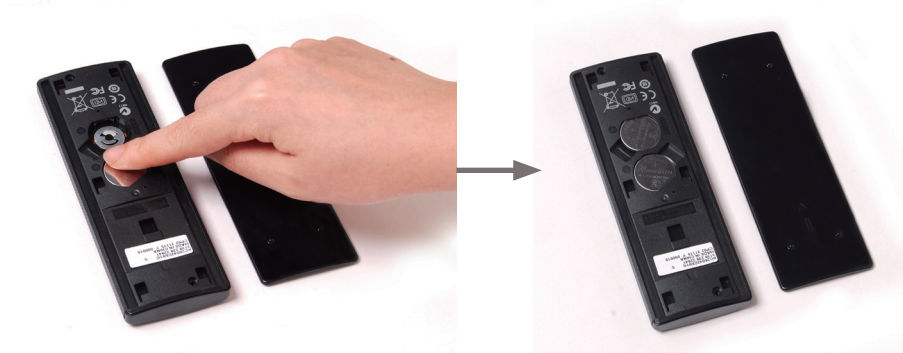
1. Locate the arrow  on the rear cover of the remote control, and push the cover as the arrow direction.



2. Remove the rear cover, and insert the CR2032 lithium cells into the battery jar at a 45 degree angle.



3. Gently press down on the CR2032 lithium cells, and reinstall the rear cover.



## Installing drivers and software

### Installing an operating system

The ZOTAC ZBOX does not ship with an operating system preinstalled. The user must install the operating system before the ZOTAC ZBOX can be used. The following operating systems are supported:

- Windows 7
- Several Linux distributions

Follow the instructions below to install an operating system:

1. Attach external DVD drive via USB 2.0
2. Insert disk for operating system (Windows or Linux).
3. Wait for the ZOTAC ZBOX to boot from the disk.
4. Follow the onscreen directions to install the operating system.
5. Install system drivers to gain full functionality of the ZOTAC ZBOX hardware and features.

**Note:** For best compatibility, please only use the USB 2.0 ports as the OS installation source drive connection.

### Installing system drivers

Before you can use the full features of the ZOTAC ZBOX, the system drivers must be installed. The following types of operating systems are supported by the ZOTAC ZBOX driver DVD:

- Windows 7

Follow the instructions below to install the system drivers:

1. Insert the ZOTAC ZBOX driver DVD. If autorun is enabled, the driver installation main menu will show up automatically. If autorun is disabled, you may click the file Launch.EXE to bring up the driver installation main menu.
2. The following drivers are available on the DVD:

- Intel Chipset Driver
- HDA Sound Driver
- Intel Graphics Driver
- Ethernet PCI-E Driver
- Renesas USB3.0 Driver
- Intel Management Engine
- Azurewave WIFI driver
- MassStorage driver



- Bluetooth driver

☞ Each driver must be installed individually to ensure proper operation of the ZOTAC ZBOX.

3. Select the driver you want to install. The driver installer should launch.
4. Follow the onscreen instructions to install the drivers.
5. Restart the system.

## Using your ZOTAC ZBOX

### Configuring wireless connection

To connect to a wireless network, follow the instructions below:

1. Double-click the crossed wireless network icon (pic) on the notification area.
2. Select the wireless network you want to connect to from the list and click Connect.
3. After connection was established, you will see Connected.

☞ For security concerns, Do NOT connect to an unsecured network, otherwise, the transmitted information without encryption might be visible to others.

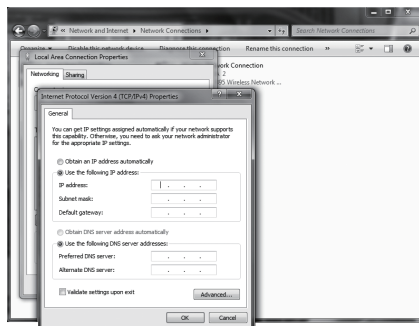
☞ Enter the network security key if necessary.



### Configuring wired connection

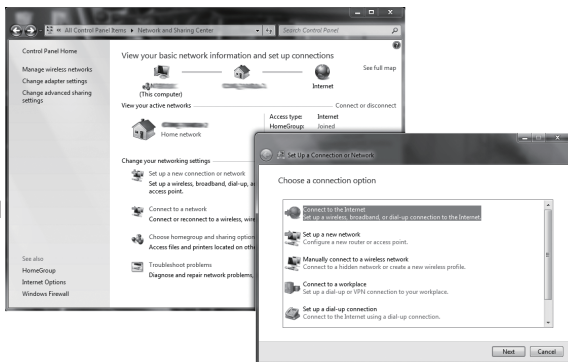
#### Using a static IP

1. Right-click the network icon on the notification area and select Open Network Connections.
2. Right-click Local Area Connection and select Properties.
3. Highlight Internet protocol (TCP/IP) and click Properties.
4. Select Use the following IP address.
5. Enter your IP address, subnet mask and Default gateway.
6. If needed, enter the preferred DNS server address.
7. After entering all of the related values, click OK to finish the configuration.



## Using a dynamic IP (PPPoE connection)

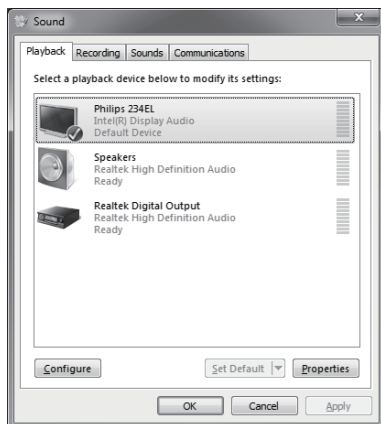
1. Repeat Step 1-3 in the previous section.
  2. Select Obtain an IP address automatically and click OK.
  3. Click Create a new connection to start the NEW Connection Wizard.
  4. Click Next.
  5. Select Connect to the Internet and click Next.
  6. Select Set up my connection manually.
  7. Select your connection type and click Next.
  8. Enter your ISP Name and click Next.
  9. Enter your User name and Password. Click Next.
  10. Click Finish to finish the configuration.
  11. Enter your user name and password. Click Connect to connect to the internet.
- ☞ Contact your internet Service Provider (ISP) if you have problems connecting to the network.



## Configuring audio output via an HDMI device

Follow the steps below to enable audio output via HDMI when connecting the ZOTAC ZBOX to a TV or receiver via HDMI.

1. Access the Sound settings via the system Control Panel.
2. Under Playback devices, click the display device item "Philips 234EL" (the device name depends on your display brand and model).
3. Click the "Set Default" in the lower right hand corner.
4. Click "OK" to exit the setup.









WWW.ZOTAC.COM



281-MA206-00C5F