

XFile.Lite





## COPYRIGHT

EVS Broadcast Equipment – Copyright © 2003-2011. All rights reserved.

## DISCLAIMER

The information in this manual is furnished for informational use only and subject to change without notice. While every effort has been made to ensure that the information contained in this user manual is accurate, up-to-date and reliable, EVS Broadcast Equipment cannot be held responsible for inaccuracies or errors that may appear in this publication.

## IMPROVEMENT REQUESTS

Your comments will help us improve the quality of the user documentation. Do not hesitate to send improvement requests, or report any error or inaccuracy on this user manual by e-mail to [doc@evs.tv](mailto:doc@evs.tv).

## REGIONAL CONTACTS

The address and phone number of the EVS headquarters are usually mentioned in the **Help > About** menu in the user interface.

You will find the full list of addresses and phone numbers of local offices either at the end of this user manual (for manuals on hardware products) or on the EVS website on the following page: <http://www.evs.tv/contacts>

## USER MANUALS ON EVS WEBSITE

The latest version of the user manual, if any, and other user manuals on EVS products can be found on the EVS download center, on the following webpage: <http://www.evs.tv/downloadcenter>



# Table of Contents

---


<b>TABLE OF CONTENTS .....</b>	<b>III</b>
<b>WHAT'S NEW IN VERSION 1.05? .....</b>	<b>V</b>
<b>1. INTRODUCTION.....</b>	<b>1</b>
<b>2. SOFTWARE INSTALLATION .....</b>	<b>3</b>
<b>3. START-UP .....</b>	<b>7</b>
<b>4. SYSTEM CONFIGURATION.....</b>	<b>8</b>
4.1 START UP TAB .....	8
4.2 GRAB TAB.....	8
4.2.1 Grab Folder.....	9
4.2.2 Output Format.....	9
4.2.3 Stretch Field to Frame Size.....	9
4.3 ADVANCED PARAMETERS TAB.....	9
4.3.1 Tree parameters .....	10
4.3.2 Confirm Paste .....	10
4.3.3 Confirm Export to Avid TM.....	10
4.4 AVID TM TAB.....	10
4.4.1 Avid TM area.....	10
4.4.2 Target Name Format String .....	11
4.5 LICENSE INFORMATION TAB.....	12
<b>5. CLIP MANAGEMENT .....</b>	<b>13</b>
5.1 FOLDER MANAGEMENT AREA .....	14
5.1.1 Folder Tree and Commands.....	14
5.1.2 Disk Usage.....	14
5.1.3 How to Create and Delete Folders in the Root Folder.....	15
5.2 CLIP LIST AREA.....	16
5.2.1 Work Tab .....	16
5.2.2 Selection Tab.....	18
5.2.3 Counters .....	19
5.2.4 Clip List Information .....	19
5.2.5 Sorting Clips in the Clip List .....	21
5.2.6 Clip List Contextual Menu .....	21
5.2.7 Defining Columns Displayed in the Clip List.....	23
5.2.8 Filters .....	24
5.3 FILE INFO AREA .....	35
5.3.1 Thumbnails .....	35
5.3.2 File and Session Metadata.....	37
5.4 MAINTAINING CLIPS AND FILES.....	38
5.4.1 Moving and Copying Clips between Folders.....	38
5.4.2 Deleting Clips/Files .....	39
5.4.3 Importing Files .....	42
5.5 MANUAL CONVERSIONS OF BACKUP FILES .....	43

5.6	BACKUP FILE TRANSFER TO EXTERNAL SYSTEMS .....	44
<b>6.</b>	<b>EXTERNAL MODULES.....</b>	<b>45</b>
6.1	EDITING A CLIP .....	45
6.1.1	File Info Tab .....	46
6.1.2	IN – OUT Tab.....	47
6.1.3	Grab Options.....	50
6.1.4	Export Option .....	51
6.1.5	Clipname – Keywords Tab .....	52
6.1.6	HD Preview Tab .....	53
6.2	SHUTTLEPRO USE IN EDIT CLIP MODULE .....	54
6.2.1	ShuttlePRO Installation and Configuration .....	54
6.2.2	ShuttlePRO Commands in the Edit Clip Module .....	57
6.3	XFILE CLIP INFO EXPORTER .....	60
6.3.1	How To Export Data to an XML, TXT or CSV File.....	61
6.3.2	Configuring the XFile Clip Exporter .....	62
6.3.3	Fields in the Configuration Window .....	63
6.3.4	How To Export The XFile Clip Exporter Configuration to a File.....	64
6.3.5	How To Import The XFile Clip Exporter Configuration to a File.....	65
6.4	STORYBOARD .....	66
6.4.1	How to Export Data to HTML file (Storyboard) .....	66
<b>NOTES.....</b>	<b>.....</b>	<b>68</b>

# What's New in Version 1.05?

---

The following table describes the sections updated to reflect the new and modified features on XFile Lite v1.05 (compared to XFile Lite v1.04).

In the user manual, the icon  has been added on left margin to highlight information on new and updated features.

Click the section number (or the description) in the table to jump directly to the corresponding section.

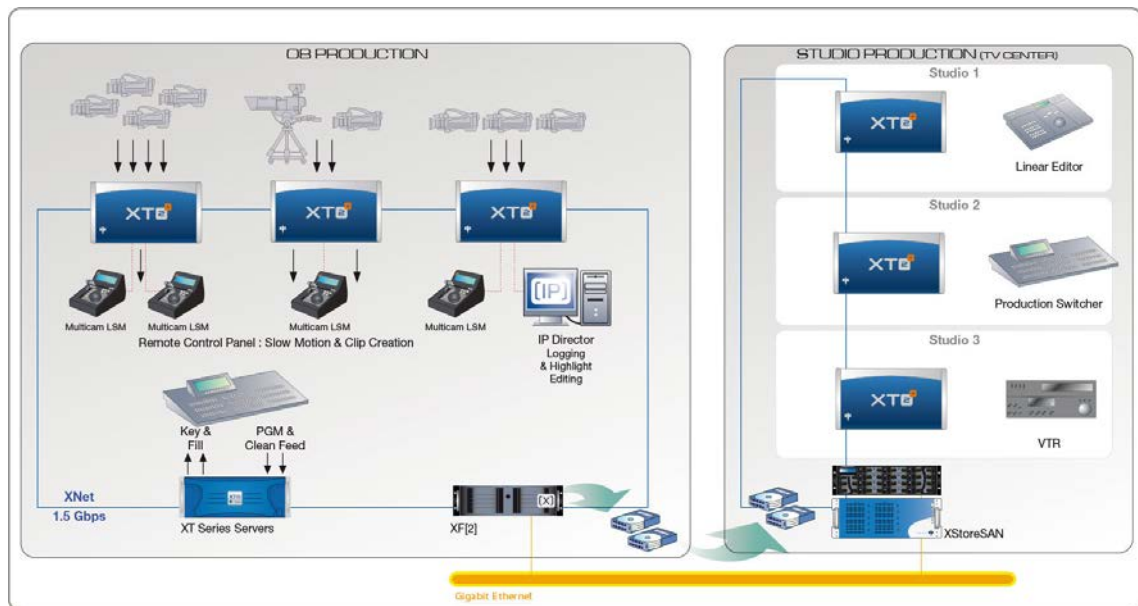
Section	Description
5.4.3	Importing Files: supported file formats have been added.





# 1. Introduction

The XFile application has access to all footage recorded on EVS video servers through the SDTI network. When a clip is created on one of the servers, a copy is automatically transferred to XFile.



Each clip is saved as a separate file on the removable media, including not only video, audio and timecode information, but also all metadata associated with that clip: name, descriptors, creation date, original location (server s/n, register), etc. The transfer between an EVS video server to the XFile is a data transfer, i.e. no decoding/encoding process takes place at any point, preserving the original quality of the footage, including super-motion character if applicable.

All files saved to XFile can be opened with XFile Lite. The XFile Lite application allows maintaining the clips backed up on a disk by the XFile application. It also allows restricted editing.

XFile Lite can be used as stand alone on any PC and does not require a PCX board.

The files supported by XFile Lite are:

- **EVS MXF** with SD codecs: MJPEG, IMX30-40-50, DVCPRO50; and with HD codecs: MJPEG, Avid DNxHD 100-120-145-185-220, DVCPRO HD, Apple ProRes 422 and Apple ProRes 422 HQ, AVC-Intra 100.
- **MXF OP1A** with SD codecs IMX30-40-50.
- **Quick Time Movie** with SD codecs: MJPEG, IMX30-40-50, DVCPRO50; and with HD codecs: MJPEG, Avid DNxHD 100-120-145-185-220, DVCPRO HD, Apple ProRes 422 and Apple ProRes 422 HQ, AVC-Intra 100.
- **Quick Time Reference** with SD codecs: IMX30-40-50, DVCPRO50; and with HD codecs: MJPEG, Avid DNxHD 100-120-145-185-220, DVCPRO HD, Apple

ProRes 422 and Apple ProRes 422 HQ, AVC-Intra 100.

- **MXF OPAtom (Avid)** with SD codecs: IMX30-40-50, DVCPRO; and with HD codecs: Avid DNxHD 100-120-145-185-220, DVCPRO HD, AVC-Intra 100.
- **MXF OP1a (Std SMPTE)** with SD codec DVCPRO50 and with HD codecs: DVCPRO HD, Avid DNxHD 100-120-145-185-220, AVC-Intra 100.

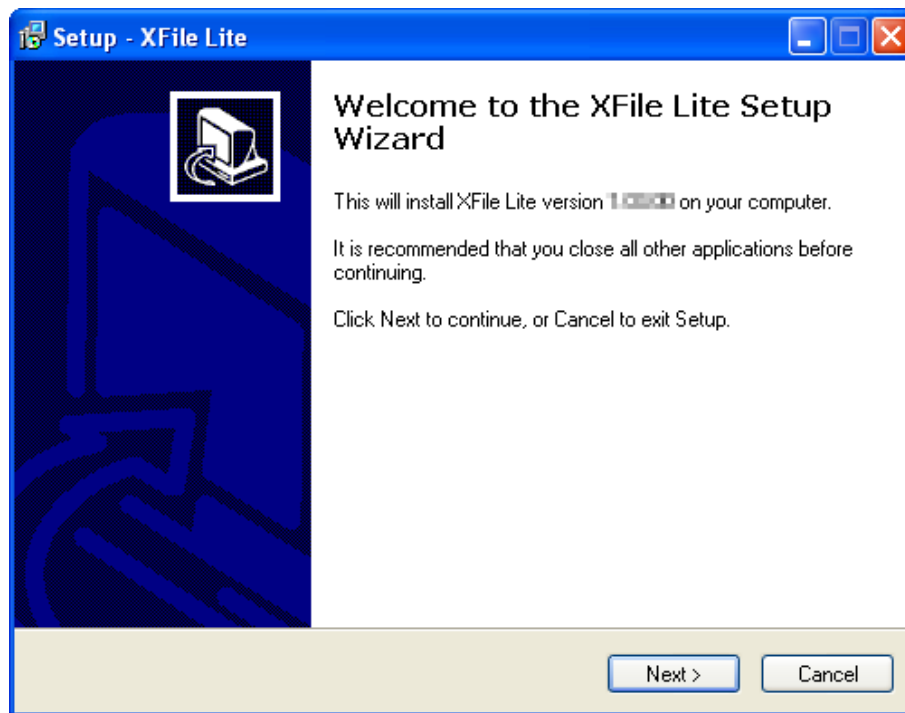
Please note that:

- HD MPEG2 I field is no more supported from XFile Lite Version 1.03.
- The following codecs are not yet supported: DV25, DVCPRO25, MPEG-1 Proxy, MPEG-2, WM 7-8-9, H.264 AVC Proxy, MPEG-4 Proxy, Apple ProRes LT, XDCAM, P2, MPEG-2 Long GOP, H.264 AVC and JPEG 2000.

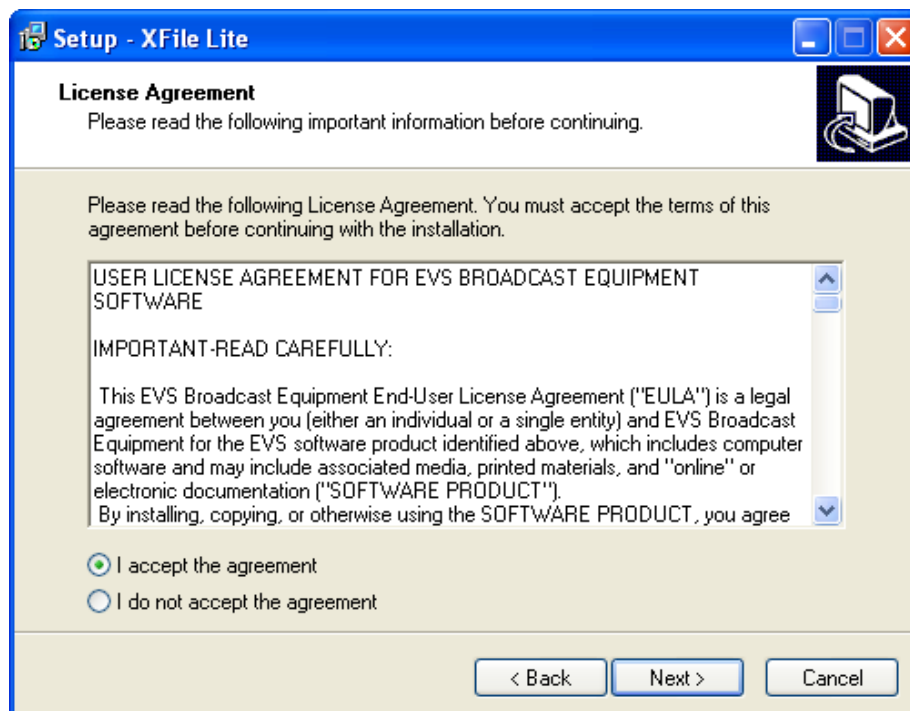
## 2. Software Installation

To install the XFile Lite application, proceed as follows:

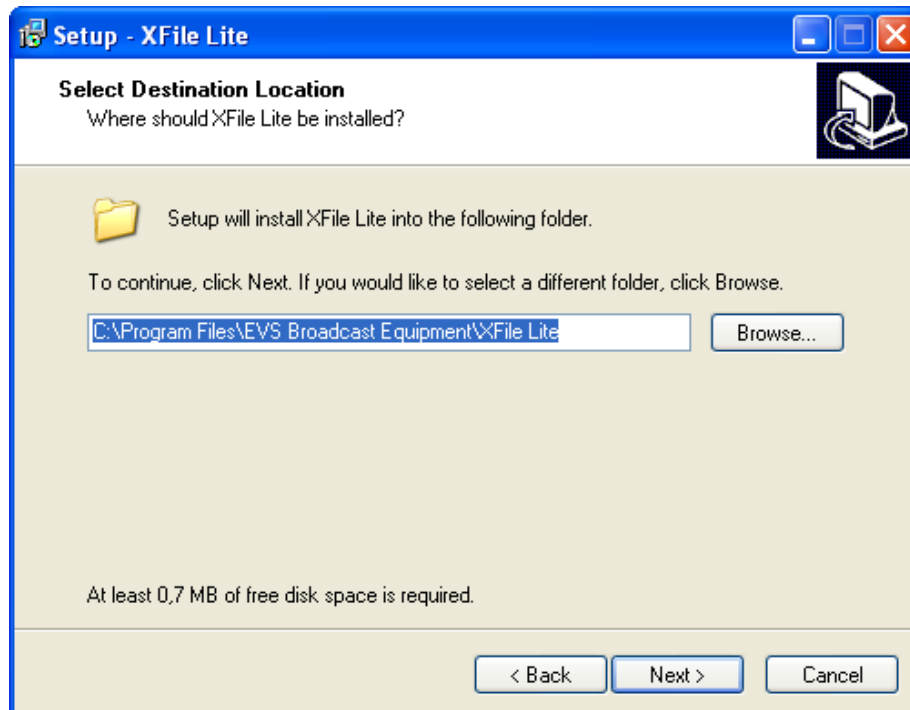
1. Double-click the XFile Lite Installer 1.05 and follow the steps of the Setup Wizard:



2. Accept the software license agreement.

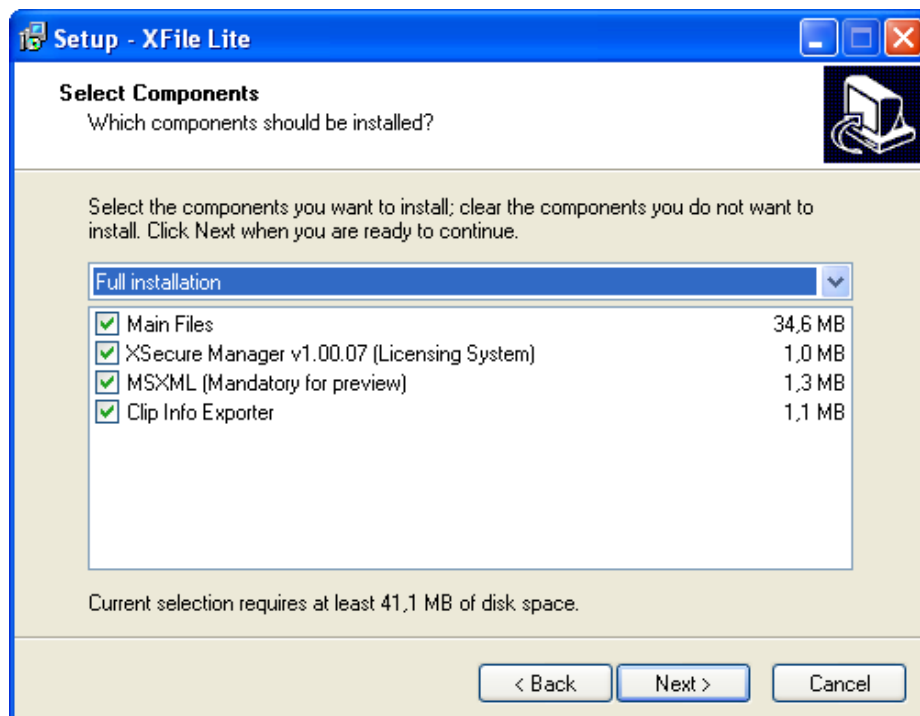


3. In the next window, select the destination directory where to install the new software and click **Next**.



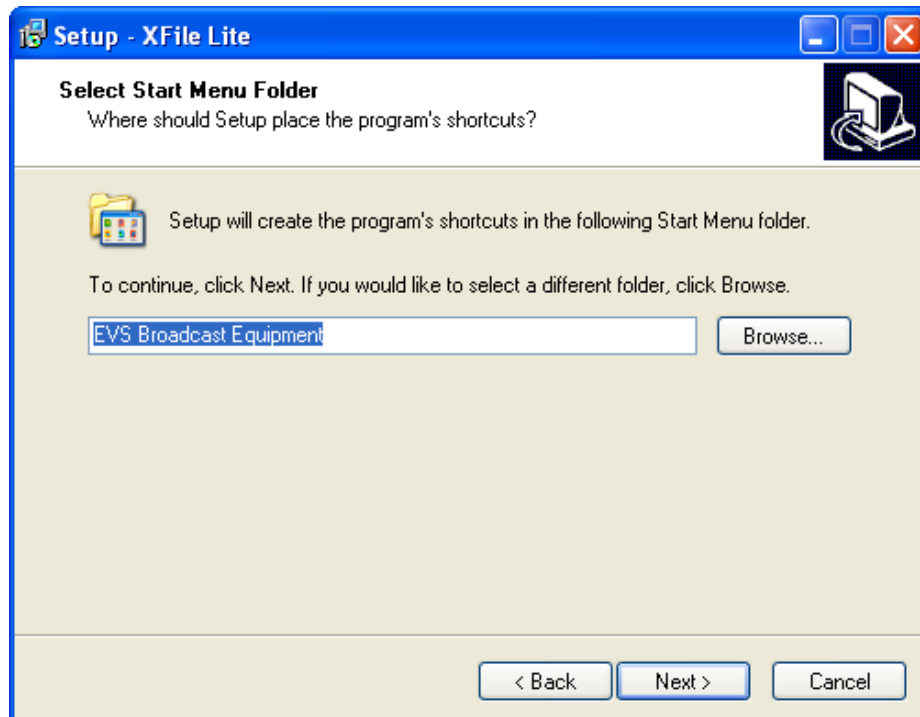
It is recommended to keep the default folder location: C:\Program Files\EVS Broadcast Equipment\XFile Lite.

4. Select the items to install in the Selection Components window:

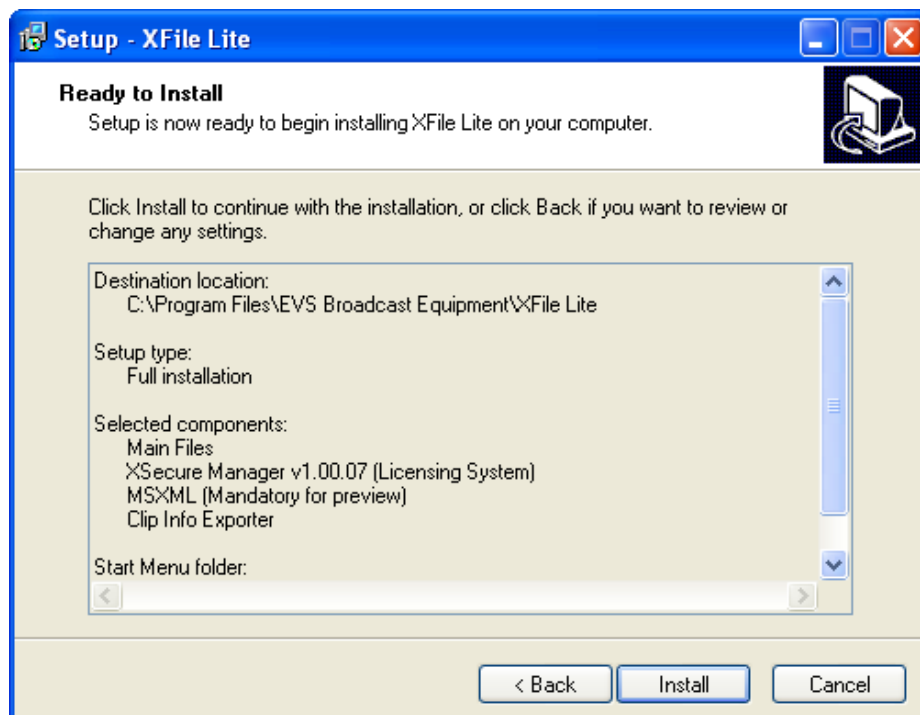


Click **Next**.

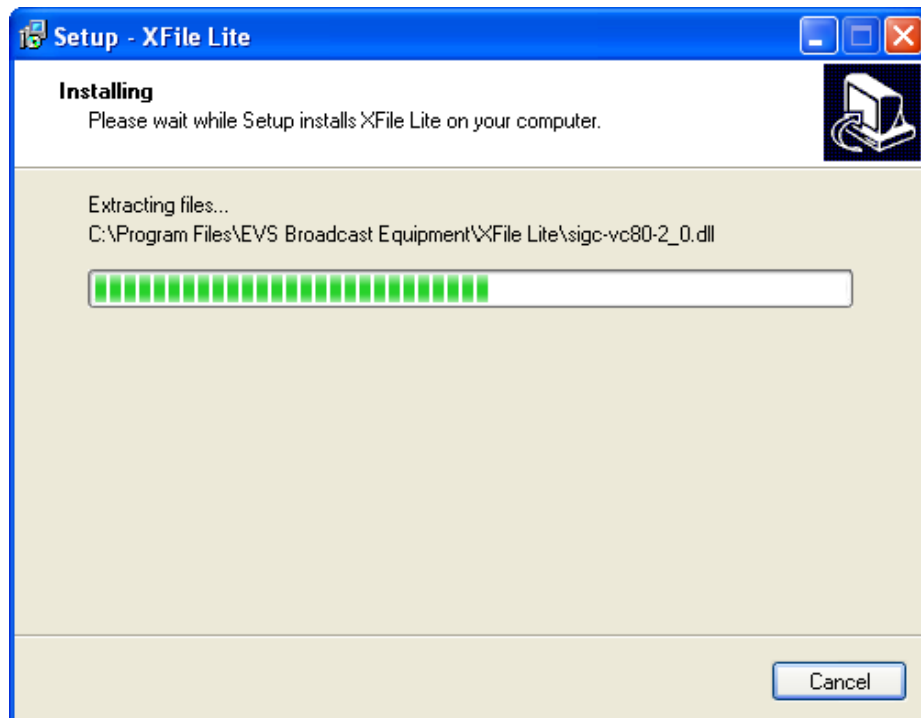
5. Select the folder in the Start Menu from where you will be able to start XFile Lite and click **Next**.



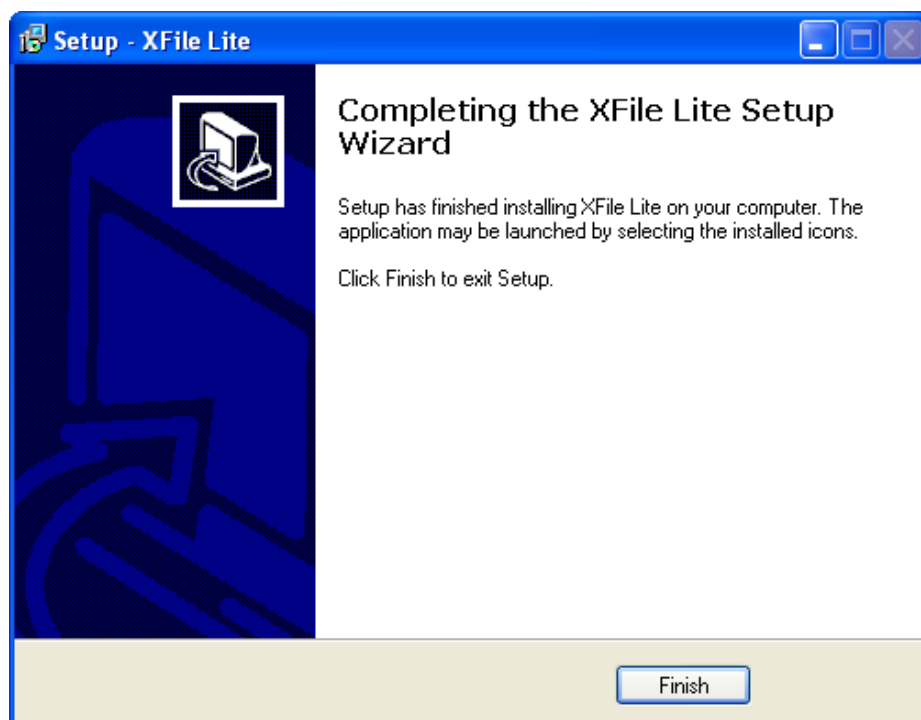
6. In the Ready to Install window, select **Install** to start the installation of the main files.



A progress bar shows the activity of files transfer.



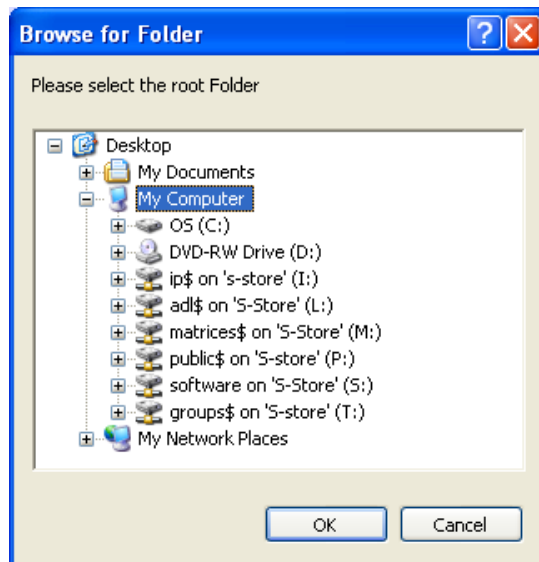
7. Click **Finish** to quit the installation process.



The XFile Lite installation is successfully completed and a XFile Lite shortcut is saved to your desktop.

## 3. Start-Up

At first start, select the root folder to scan:



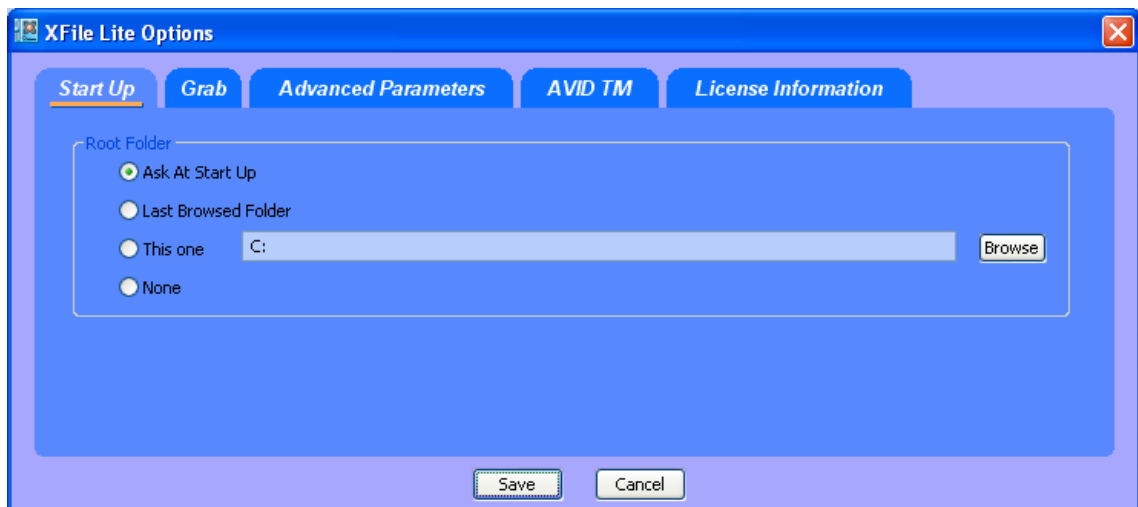
The MXF files from the root folder are displayed in the list.

# 4. System Configuration

The system configuration is available in the **Configuration > Config ...** menu from the menu bar.

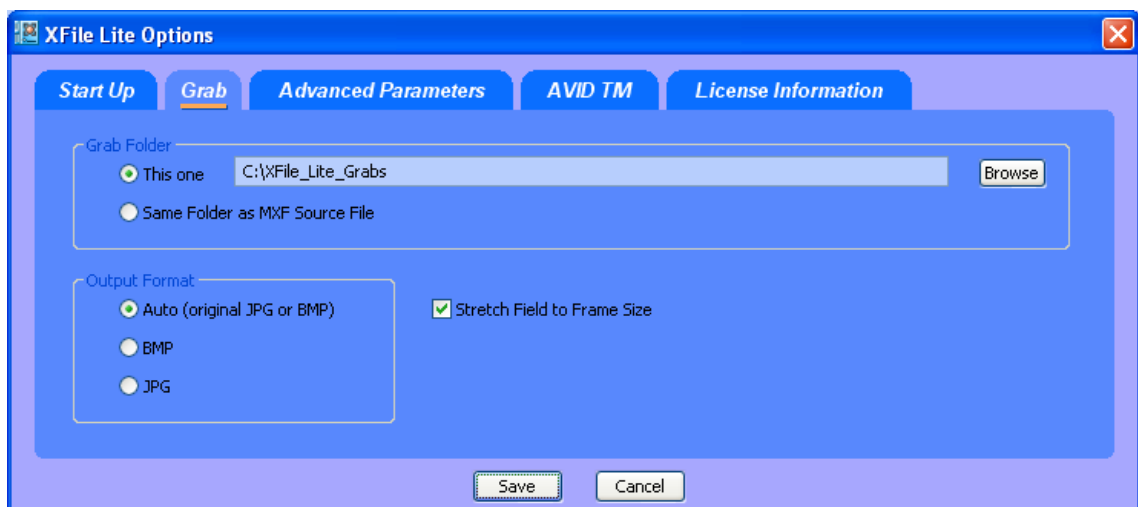
## 4.1 START UP TAB

In the Start Up tab, you select the root folder to be displayed at start-up:



## 4.2 GRAB TAB

In the Grab tab, you select the folder where the images grabbed from the Edit Clip module will be stored.





## 4.2.1 GRAB FOLDER

Select the destination folder to save the JPG/BMP files.

## 4.2.2 OUTPUT FORMAT

The automatic selection of the output format depends on the original format of the MXF files:

- If the images are NOT modified by stretching, the JPG format will be selected as the output format.
- If the images are modified by stretching, the BMP format will be selected as the output format.

The user can force the selection of one format.



### Note

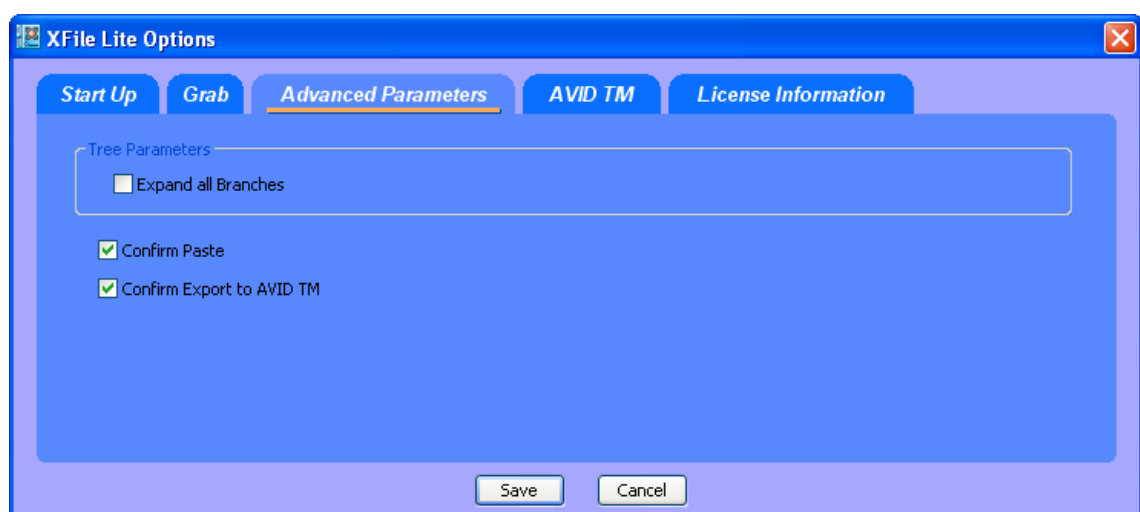
No compression artifact is added to this file creation process, so the original quality of the image is kept.

---

## 4.2.3 STRETCH FIELD TO FRAME SIZE

When images modified by stretching are converted to the JPG format, select the **Stretch Field to Frame Size** option to stretch the image to the 4:3 or 16:9 frame size.

## 4.3 ADVANCED PARAMETERS TAB



### 4.3.1 TREE PARAMETERS

The **Expand all Branches** option allows displaying the complete contents of folders.

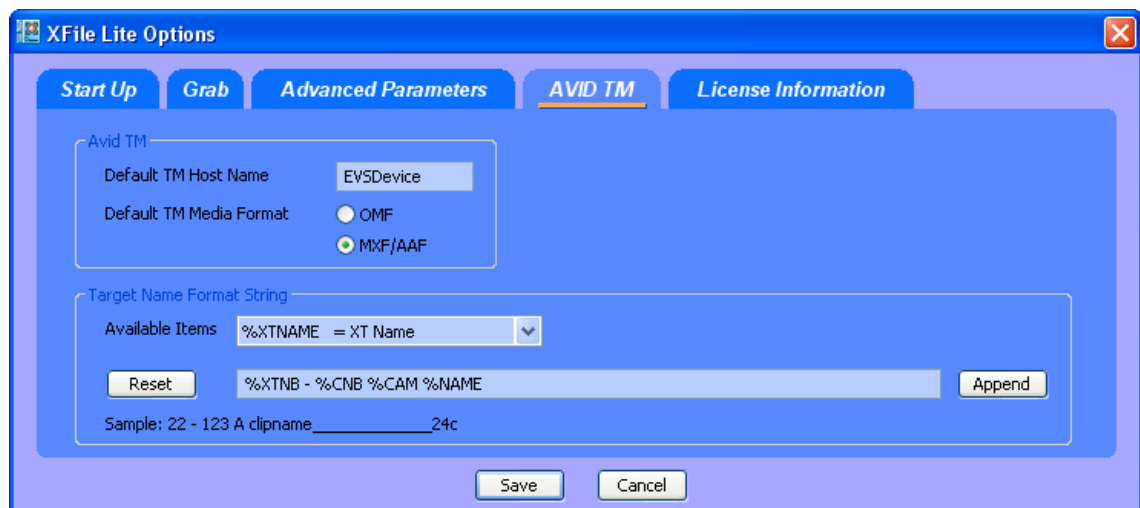
### 4.3.2 CONFIRM PASTE

Select this option to request the user to confirm all Paste actions in the application.

### 4.3.3 CONFIRM EXPORT TO AVID TM

Select this option to request the user to confirm all exports to Avid TM. The files can be exported to Avid via the **Transfer to Avid TM** option available in the contextual menu when you right-click a clip in the Clip List.

## 4.4 AVID TM TAB



The backup files can be transferred to and converted to OMF or MXF Avid Media Type formats by the Avid TM. The Avid TM tab allows specifying the parameters to be used in this file transfer.

The **Transfer to Avid** command is available in the contextual menu when you right-click a clip in the Clip List. For more information, refer to section 5.6 'Backup File Transfer to External Systems', on page 44.

### 4.4.1 AVID TM AREA

#### *Default TM Host Name*

Enter the host name of the default Avid Transfer Manager in this field.

Please contact EVS support for details regarding the configuration of Avid TM.

## Default TM Media Format

The **Default TM Media Format** field makes it possible to specify the media format to which the Avid Transfer Manager will convert the backup file received from the XFile Lite application. This information is transferred as a setting to the Avid Transfer Manager that will perform the conversion.

The following formats are available:

- OMF
- MXF/AAF

## 4.4.2 TARGET NAME FORMAT STRING

A default filename is automatically given to the target file.

This filename is user-defined and can be modified by typing a generic term (i.e.: WC2006\_Match03...) and/or by adding one or many available items (See screenshot below). See also section 'How to Modify the Default Filename Format String', on page 11.

The user can reset the default filename by clicking the **RESET** button.

### How to Modify the Default Filename Format String

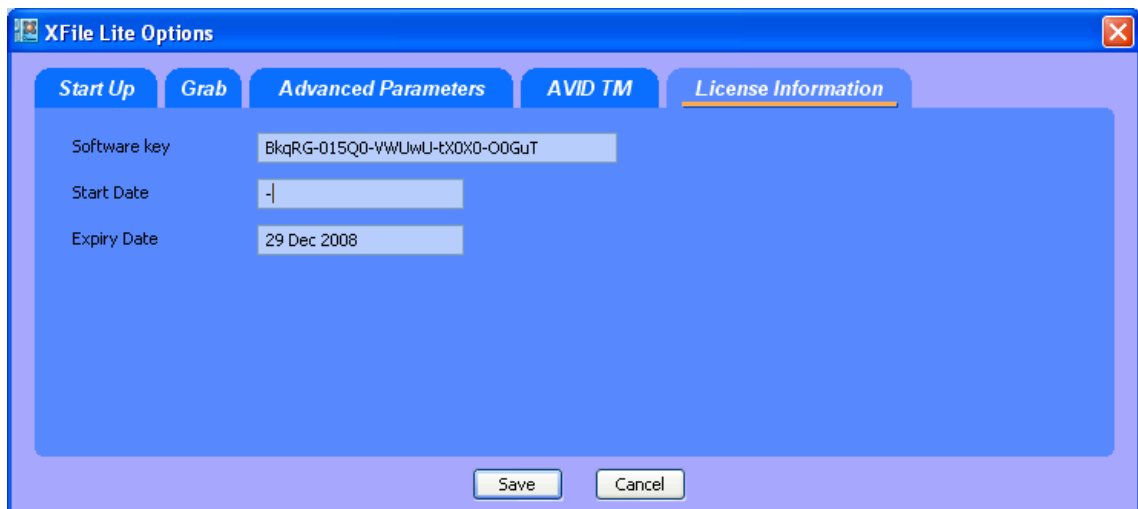
To modify this default format string, proceed as follows:

1. In the field containing the file name, delete the part of the string you do not want to keep in the filename, if any.
2. To add a generic text (i.e.: WC2006\_Match03...) in the filename string, simply type the text in the field.
3. To add an information type specified in the **Available Items** drop-down list, select the item in the drop-down list.

Available Items	%XTNAME = XT Name
	%XTNAME = XT Name
	%XTNB = XT User Number
	%CNB = Clip Number
	%CAM = Camera
	%CAMLBL = Camera Label
	%NAME = Clip Name
	%K1 = Keyword 1
	%K2 = Keyword 2
	%K3 = Keyword 3
	%TCIN = TimeCode short IN
	%TCOUT = TimeCode short OUT
	%IDMAT = ID Material
	%UMID = UmID
	%VARID = VarID
	%BDATE = Backup Date
	%BYEAR = Backup Year
	%BMONTH = Backup Month
	%BDAY = Backup Day
	%CDATE = Creation Date
	%CYEAR = Creation Year
	%CMONTH = Creation Month
	%CDAY = Creation Day

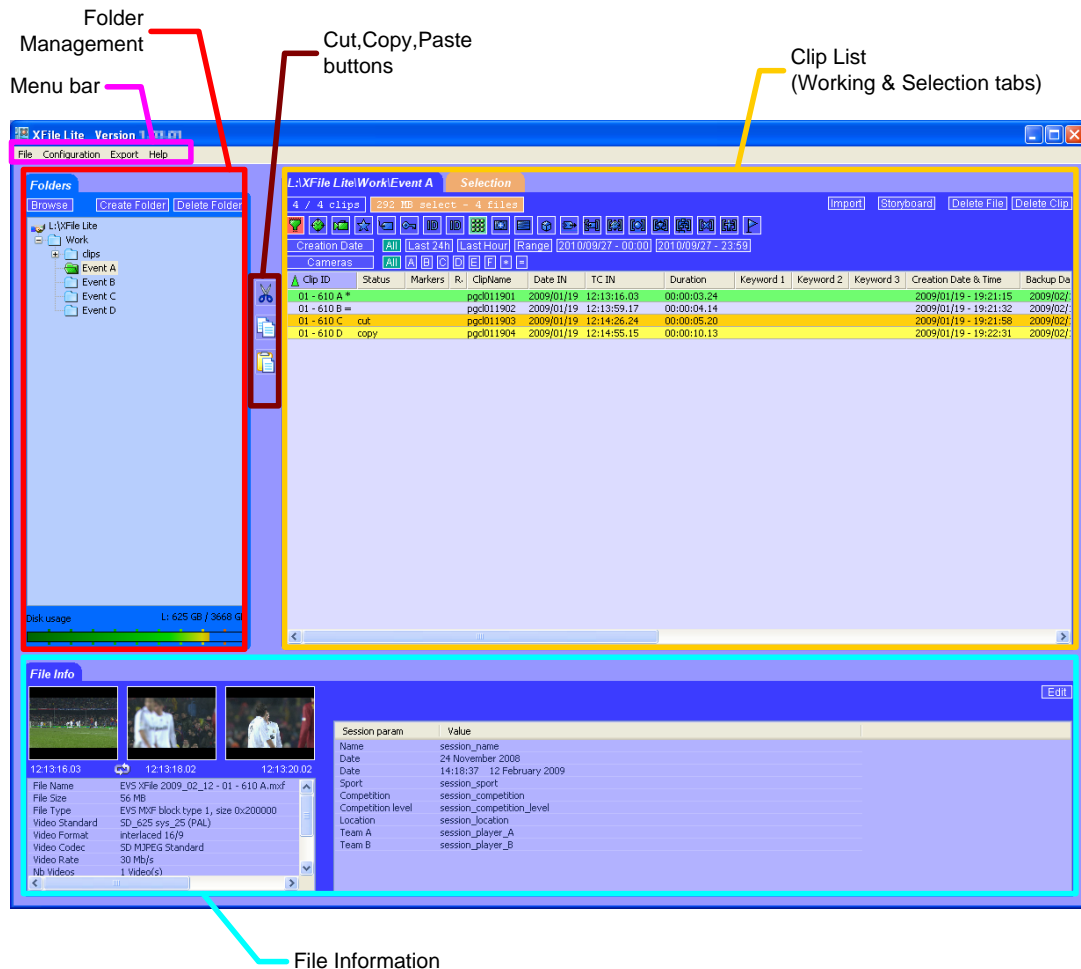
4. Click the **APPEND** button to add the selected item at the end of the filename string.
5. Reposition the available item as desired with the cut (**CTRL-C**) and paste (**CTRL-V**) commands.
6. Repeat steps 3 to 5 for any new information type you want to add in the filename string.

## 4.5 LICENSE INFORMATION TAB



To generate a software key, refer to the complete instructions in the XSecure user manual.

# 5. Clip Management



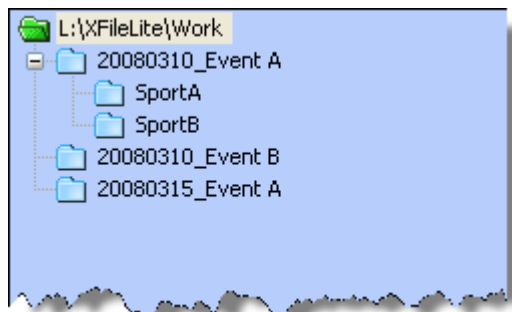
The XFile Lite main window is divided into 3 main areas:

- Folder Management Area
- Clip List Area
- File Info Area

Cut, copy and paste buttons are also available on the main XFile Lite window. For more information, refer to the section 'Moving and Copying Clips between Folders', on page 38.

## 5.1 FOLDER MANAGEMENT AREA

### 5.1.1 FOLDER TREE AND COMMANDS



In the Folder Management area, the folder tree displays the root folder that contains the backup files displayed in the Clip List. EVS MXF files contained in the selected folder are automatically displayed in the Clip List, while files with other file formats need to be imported. Refer to section 5.4.3 'Importing Files' on page 42.

The view can be expanded to show the subfolders.

The following command buttons are available above the folder tree:

Command	Use
<b>Browse</b>	Allows to browse for a new root folder.
<b>Create Folder</b>	Allows to create a new subfolder of the folder selected in the folder tree view.
<b>Delete Folder</b>	Allows to delete the subfolder selected in the folder tree view.

### 5.1.2 DISK USAGE

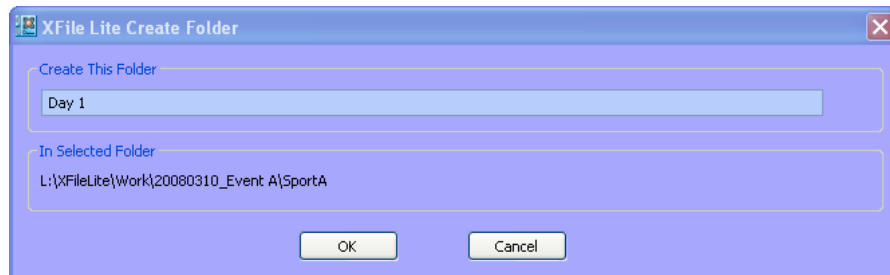


The Disk Usage displays the remaining capacity on the hard disk where the root folder is located.

## 5.1.3 HOW TO CREATE AND DELETE FOLDERS IN THE ROOT FOLDER

*To create a new folder, proceed as follows:*

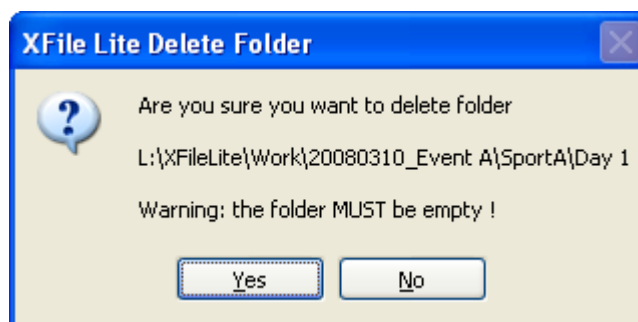
1. In the Folders tree, select a folder where to create a new subfolder.
2. Click on the **Create Folder** button to open the XFile Lite Create Folder dialog box:



3. Type the name of the new folder.
4. Click **OK** to validate.

*To delete an existing folder, proceed as follows:*

1. In the Folders tree view, select the folder you want to delete.
2. Click on the **Delete Folder** button.
3. Answer 'Yes' to the following message to confirm the folder deletion:

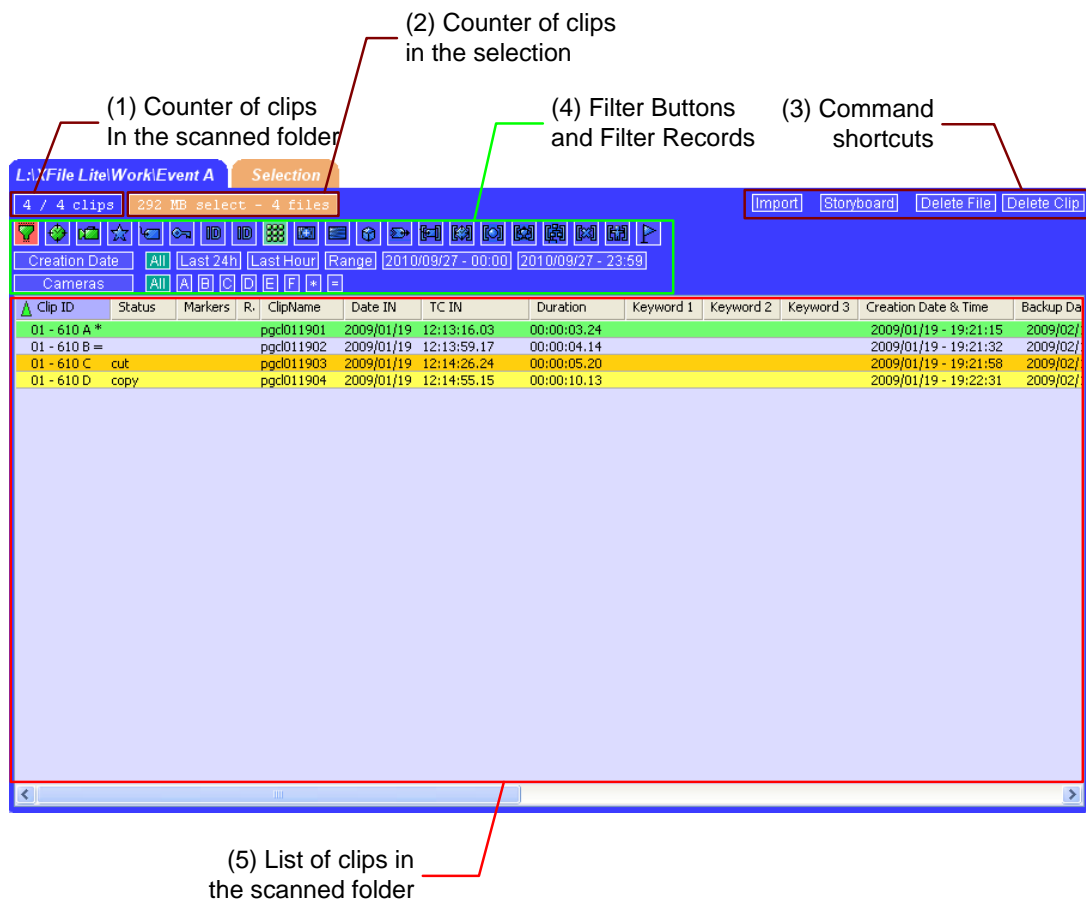


## 5.2 CLIP LIST AREA

The Clip List area includes two tabs, the working tab and the selection tab.

- The Work tab displays the list of clips stored in the scanned folder. EVS MXF files contained in the folder selected in the Folder Tree are automatically displayed in the Clip List, while files with other file formats need to be imported. Refer to section 5.4.3 'Importing Files' on page 42.
- The Selection tab displays the list of clips selected with the copy or cut buttons.

### 5.2.1 WORK TAB

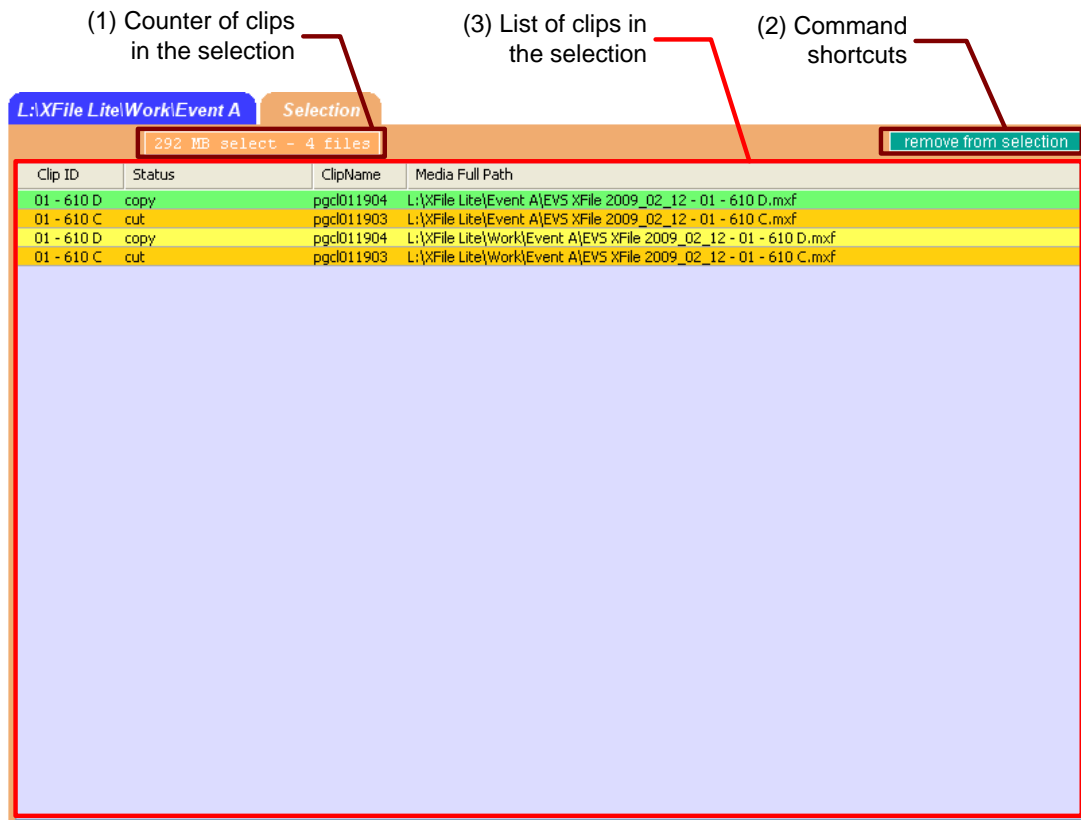




The Work tab contains the following elements:

N°	Element
1.	Counter of clips stored in the scanned folder
2.	Counter of clips selected for copy or cut actions and stored in the Selection tab
3.	<p>Buttons giving access to commands or options specific to the Clip List:</p> <ul style="list-style-type: none"><li>• <b>Import</b> button to import any type of file supported by XFile Lite. Refer to section 5.4.3 'Importing Files' on page 42.</li><li>• <b>Storyboard</b> button to export the clip data to an HTML file. For more information, see the section 6.4 'Storyboard', on page 66.</li><li>• <b>Delete File</b> button to delete the MXF file that includes the selected clip. For more information, see the section 5.4 'Maintaining Clips and Files', on page 38.</li><li>• <b>Delete Clip</b> button to delete the selected clip in the MXF file. For more information, see the section 5.4 'Maintaining Clips and Files', on page 38.</li></ul>
4.	<p>Filter buttons to display or hide the related filtering criteria in a row below them.</p> <p>The filtering criteria make it possible to filter the clips displayed in the Clip List.</p>
5.	List of clips stored in the scanned folder. It provides information on each clip.

## 5.2.2 SELECTION TAB



The clips selected via the Copy and Cut buttons are added to the Selection tab. The Selection tab contains the following elements:

N°	Element
1.	Number of clips in the Selection tab
2.	Command button: <b>Remove from Selection</b> button to remove one or more selected clips from the selection
3.	List of selected clips. It provides some details on the clips.

## 5.2.3 COUNTERS

A counter of clips is available in the Work tab in the upper side of the list.

**378 / 10000 clips**

The first value is the number of clips displayed in the list, the second value is the total amount of clips in memory (contents of path(s) + external folder + clips scheduled).

The number of items in the different lists can affect the performance of the system. So it is advised to reduce the number of clips displayed in the lists.

When the total amount of clips displayed in the list exceeds 2000 clips, the counter lights orange.

**2000 / 10000 clips** **4000 / 10000 clips**

When the total number of clips displayed in the list exceeds 4000 clips, the counter lights red. If the total number of clips exceeds 5000 clips, the list refreshing stops and the counter displays + 5000+.

Another counter is available in the Selection tab:

**996 MB select - 2 files**

It displays the number of clips added to the selection via a cut or copy action.

## 5.2.4 CLIP LIST INFORMATION

In the Work and Selection tab, each record of a clip displayed in the Clip List includes clip information. The main fields displayed in the Clip List are explained in the table below:

Clip Information	Description	Sel. tab
Full Clip ID	Displays ID assigned to the clip using its page, bank, clip and camera number.	√
Status	Displays the selection status of the clip, i.e. 'copy' or 'cut'.	√
ID Material	Displays ID assigned to the video material and which is unique on the SDTI network	√
UmID	Displays the 8-bytes ID with fixed length assigned to the clip and used for the unique clip identification on the SDTI network.	√
VarID	Displays the 32-bytes ID with variable length assigned to the clip.	
Markers	Displays the markers defined for the clip.	
Rating	Displays the interest level assigned to the clip.	

Clip Information	Description	Sel. tab
ClipName	Displays the name assigned to the clip	√
Date IN	Displays the date of the clip IN point. This information is provided with clips created from Multicam v. 9.00, whatever the time code used.	
TC IN	Displays the TC IN of the clip for the time code defined as primary time code in Multicam. The other time code data are specified in the IN/OUT tab of the Edit Clip module.	
Duration	Displays the duration of the clip without guardbands.	
Keyword 1	Displays the first keyword assigned to the clip.	
Keyword 2	Displays the second keyword assigned to the clip.	
Keyword 3	Displays the third keyword assigned to the clip.	
Creation Date and Time	Displays the creation date and time of the XT where the clip has been created	
Backup Date and Time	Displays the date and time of the XFile when the clip backup file has been created.	
File Format	Displays the format of the backup file that includes the clip, i.e. EVS MXF 2 MB, MXF OP1a, QuickTime Movie, QuickTime Reference.	
Media Full Path	Displays the full path where the backup file is located on the XFile disks.	√
Metadata Full Path	Displays the full path where the metadata XML file of the backup file is located on the XFile disks.	

### Note






Depending on the timecode and video systems, the timecode in the column is displayed with different characters:

TC IN	Duration	
10:00:00,00 ✕	00:00:07.27 ♦	← NTSC drop frame
10:00:00.00 ♦	00:00:07.02 ♦	← NTSC non drop frame
10:00:00.00	00:00:07.02	← PAL

The duration for NTSC clips is always calculated on non-drop-frame basis.

## 5.2.5 SORTING CLIPS IN THE CLIP LIST

To sort a column in alphabetical or numerical order, click on the column label to display the arrow button   and click again to invert the sorting.

Clip ID	 Name	TC IN	Du
03 - 111 A *		6-16:05:28.06	00:
03 - 111 B =		6-16:05:28.06	00:
05 - 11 A *		185-13:35:04.2	00:
05 - 11 B =		185-13:35:04.2	00:
05 - 12 A *		185-13:35:05.1	00:

## 5.2.6 CLIP LIST CONTEXTUAL MENU

A contextual menu is available from the clip list area of the Work tab:

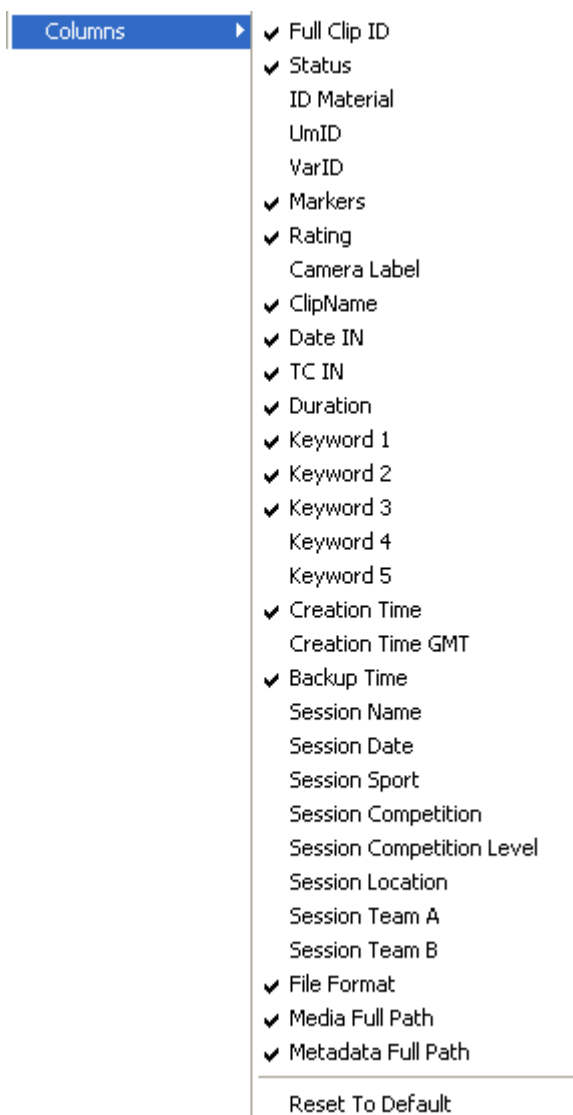
Columns	▶
Filters	▶
<hr/>	
Edit	
Select All	
<hr/>	
Cut	
Copy	
Paste	
<hr/>	
Reset selection	
<hr/>	
Re-Scan Folder	
<hr/>	
Transfer/Convert	▶

It makes it possible to perform the following actions on the clips:

Action	Description
<b>Columns</b>	Allows to select the clip data to be displayed as columns in the clip list.  See also the section 'Defining Columns Displayed in the Clip List', on page 23.
<b>Filters</b>	Allows to display the filter criteria that can be or are defined.  See also the section 'Filters', on page 24.
<b>Edit</b>	Gives access to the XFile Lite Edit Clip module to edit the selected clip.  See also the section 6.1 'Editing a Clip', on page 45.
<b>Select All</b>	Selects all the clips displayed in the clip list.
<b>Cut</b>	Cuts the clips selected in the clip list and adds them to the selection displayed in the Selection tab. They can then be moved to another folder.

Action	Description
<b>Copy</b>	Copies the clips selected in the clip list and adds them to the selection displayed in the Selection tab. They can then be pasted to another folder.
<b>Paste</b>	Moves or copies the clips from the Selection tab into the folder selected in the Folders tree view.  See also section 5.4 'Maintaining Clips and Files' on page 38.
<b>Reset Selection</b>	Removes all the clips selected for move or copy from the Selection tab.
<b>Re-Scan Folder</b>	Scans the folder selected in the Folders tree view to retrieve the clips it contains and display them in the clip list.
<b>Transfer/Convert</b>	Allows to transfer a clip to the Avid Transfer Manager or convert a clip to an EVS MXF 2 MB.  For more information, see also the sections 'Backup File Transfer to External Systems', on page 44 and 'Manual Conversions of Backup Files', on page 43.

## 5.2.7 DEFINING COLUMNS DISPLAYED IN THE CLIP LIST



Use the right-click button of the mouse (into the clip list) to access this selection menu.

All columns available are listed here.

Select or unselect the item to be displayed or to be hidden.

The **Reset to Default** option allows you to restore the standard display

## 5.2.8 FILTERS

The filters allow to restrict the clips displayed in the clip list.



The upper part of the clip list displays a series of buttons. These buttons give access to the different filters to be applied to the clip list.



Blue button on a blue background. Filter inactive and hidden



Green button on a blue background. Filter is visible but inactive

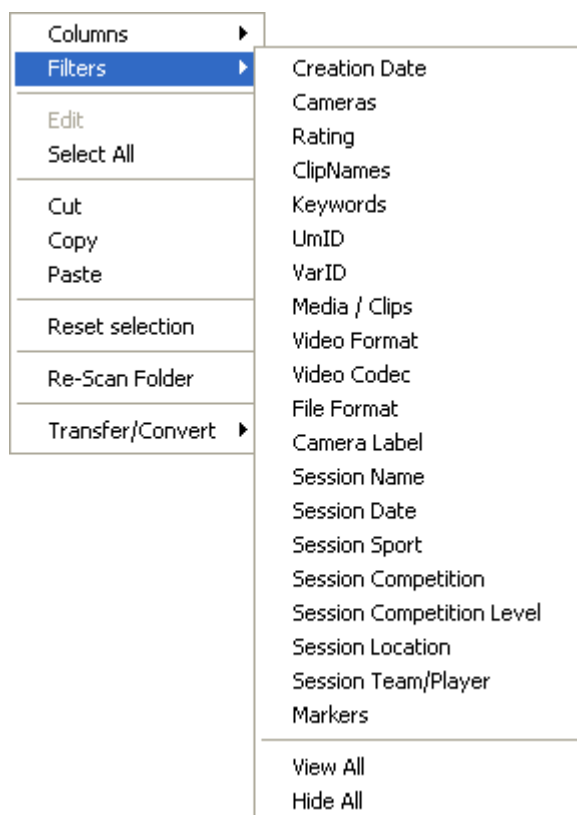


Green button on a green background. Filter is active



: the RESET button resets all filters to default values (= ALL for most filters)

Click on a button to display/hide the filter or right-click to access this selection menu.





## CREATION DATE

Creation Date All Last 24h Last Hour Range 2006/11/07 - 08:30 2006/11/07 - 23:59



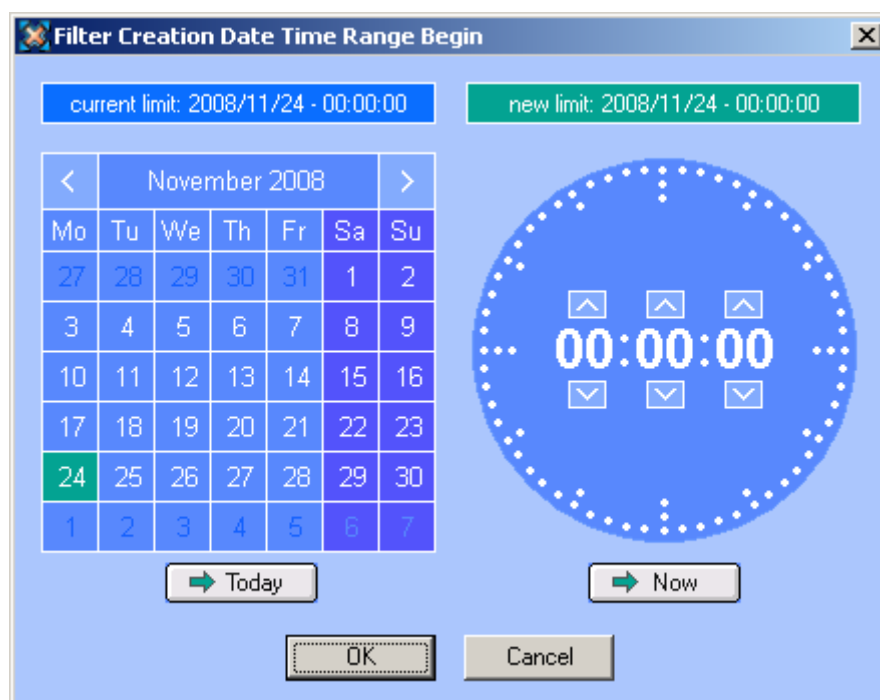
### Note

The creation date and the backup time are different values. The creation date depends on the date and time defined on your EVS video server. Please check the date-time of your system before operating.

'Last Hour' and 'Last 24h' are both quick shortcuts to display the clips created during the last hour or during the last 24 hours.

A range of date & time can be defined to sort the clips created during that period. The 'Creation date' filter requires a start date and time, as well as an end date and time to be valid.

1. Click on the left date & time button to open the following dialog box:



2. For date selection, do one of the following:
  - In the calendar, select the month with the left and right arrows, then the day of the month.

OR

  - Click the **Today** button.
3. For time selection, do one of the following:
  - In the **Time** field (blue circle), select the hour using the up and down arrows to change the value displayed or directly type the value when the field lights green.

OR

- Click the **Now** button.

4. Press **ENTER** to confirm your selection.
5. Click on the right date and time button to access the second selection window and to enter the values for the end limit.

The filter is now active and the clips created in between the time range defined are displayed in the clip list.

## CAMERA SELECTION



Select the squares representing the cameras and/or the PREF cameras of the clips to be displayed in the clip list. Selected cameras appear in a green square.

## RATING

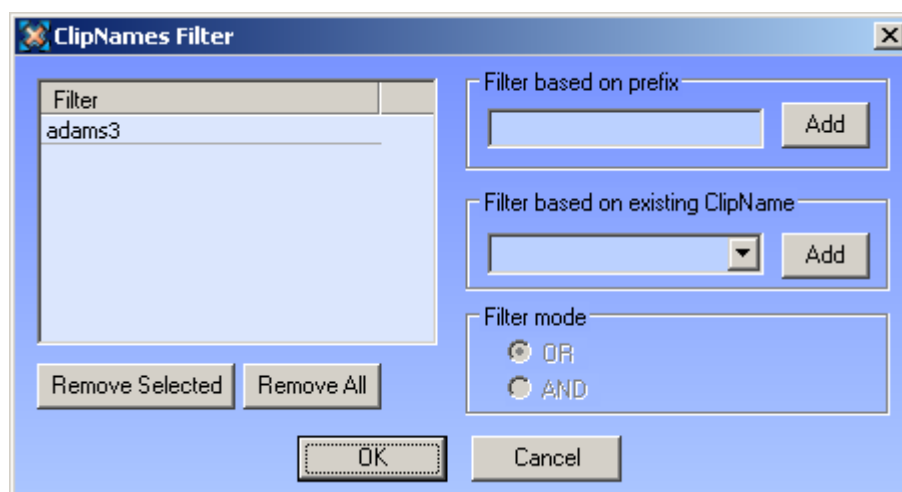


Select the squares representing the four levels of Rating. Selected items appear in a green square and the clip list is refreshed to display the new selection of clips.

## CLIP NAMES



Clicking on the button on the right side opens the following dialog box:



## ***Filter Based on Prefix***

The **Filter based on Prefix** field allows defining a quick filter based on the first character(s) of a clipname.

When you click the **Add** button to add the prefix defined to the Filter list, the system adds automatically a "\*\*\*" sign after the prefix. This helps the user distinct the prefixes and the full clipnames in the Filter list.

## ***Filter Based on Existing Clipname***

At startup, all clipnames assigned to the clips are extracted from the MXF files and are listed in the 'Filter Based on Existing Clipname' field.

Select a clipname from the list and click **Add** to fill out the filter list.



### **Note**

The number of clipnames/prefix in the list is restricted to 5 items.

The filter mode is not selectable.

---

## ***Remove Selected***

In the Filter list, select an item and click **Remove Selected** to cancel the selection of this clipname.

## ***OK/Cancel***

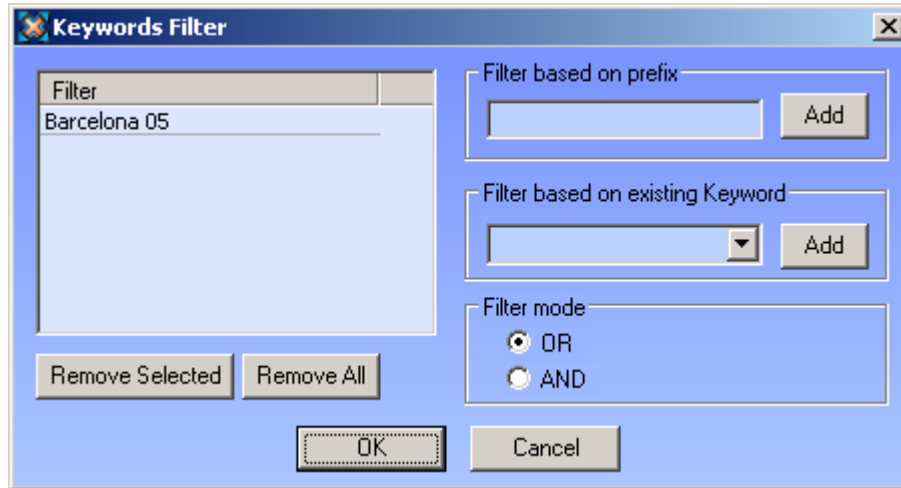
Click **OK** to confirm your selection and to quit the dialog box. The new clipnames appear in the filter field.

Click **Cancel** to come back to the main XFile Lite window without applying any Clipname filter.

## KEYWORDS



Clicking on the button on the right side opens the following dialog box:



### *Filter Based on Prefix*

The 'Filter based on Prefix' field allows defining a quick filter based on the first character(s) of a keyword.

When you click the **Add** button to add the prefix defined to the Filter list, the system adds automatically a "\*" sign after the prefix. This helps the user distinct the prefixes and the full keywords in the Filter list.

### *Filter Based on Existing Keyword*

At startup all keywords assigned to the clips are extracted from the MXF files and are listed in the **Filter based on existing Keyword** field.

Select a keyword from the list and click **Add** to fill out the filter list.



#### **Note**

The number of keywords/prefix in the list is restricted to 5 items.

### *Filter Mode*

In the filter mode field, select between the cross-selection mode (i.e. keyword 1 AND keyword2) and the global selection mode (i.e. Keyword 1 OR keyword 2)

### *Remove Selected*

In the Filter list, select a keyword and click **Remove selected** to cancel the selection of this keyword.

### **OK / Cancel**

Click **OK** to confirm your selection and to quit the dialog box. The new keywords appear in the filter field.

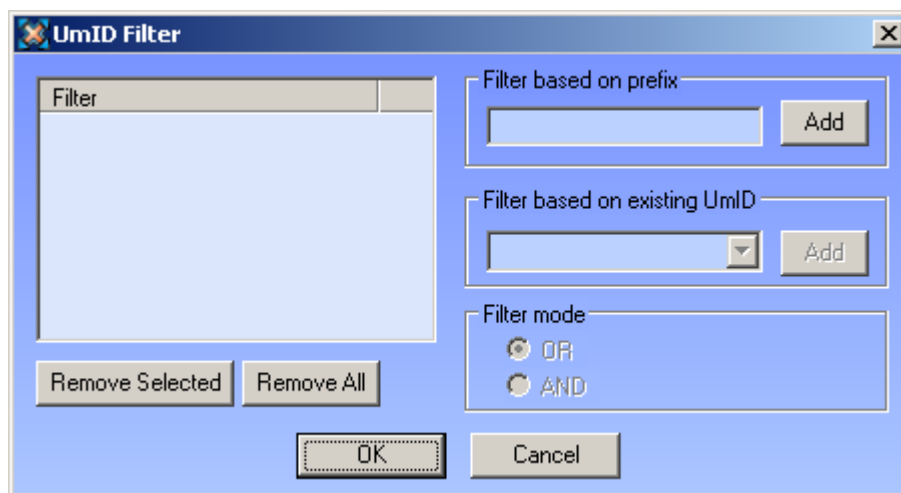
Click **Cancel** to come back to the main XFile Lite window without applying any Keyword filter.

### **UMID**

Clicking on the left  button will display the UmID filter.



Clicking on the left button on the right side opens the following dialog box:



### **Filter Based on Prefix**

The **Filter based on Prefix** field allows defining a quick filter based on the first character(s) of a UmID.

When you click the **Add** button to add the prefix defined to the Filter list, the system adds automatically a "\*" sign after the prefix. This helps the user distinct the prefixes and the full UmIDs in the Filter list.

### **Remove Selected**

In the Filter list, select an UmID and click **Remove selected** to cancel the selection of this UmID.

### **OK/Cancel**

Click **OK** to confirm your selection and to quit the dialog box. The new UmID appear in the filter field.

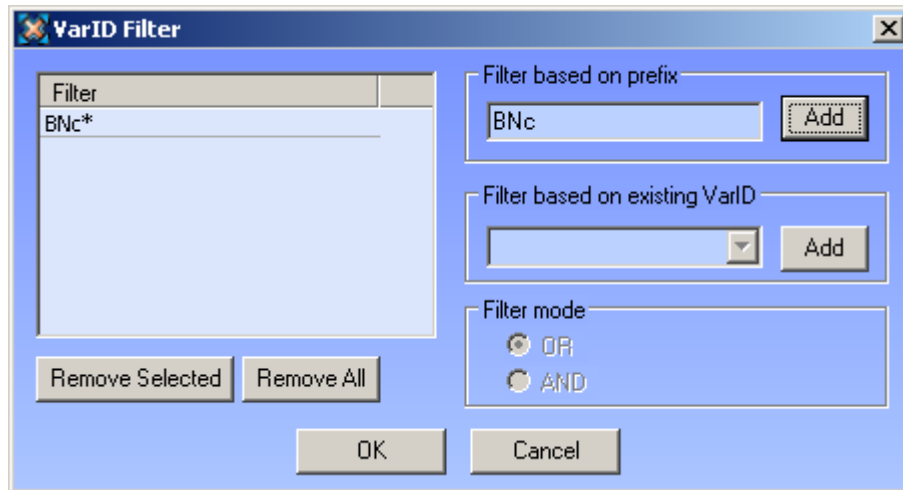
Click **Cancel** to come back to the main XFile Lite window without applying any UmID filter.

## VARID

Clicking on the right  button will display the VarID filter.



Clicking on the button on the right side opens the following dialog box:



### *Filter Based on Prefix*

The **Filter based on Prefix** field allows defining a quick filter based on the first character(s) of a VarID.

When you click the **Add** button to add the prefix defined to the Filter list, the system adds automatically a "\*" sign after the prefix. This helps the user distinct the prefixes and the full VarIDs in the Filter list.

### *Remove Selected*

In the Filter list, select a VarID and click **Remove selected** to cancel the selection of this VarID.

### *OK/Cancel*

Click **OK** to confirm your selection and to quit the dialog box. The new VarID appears in the filter field.

Click **Cancel** to come back to the main XFile Lite window without applying any VarID filter.

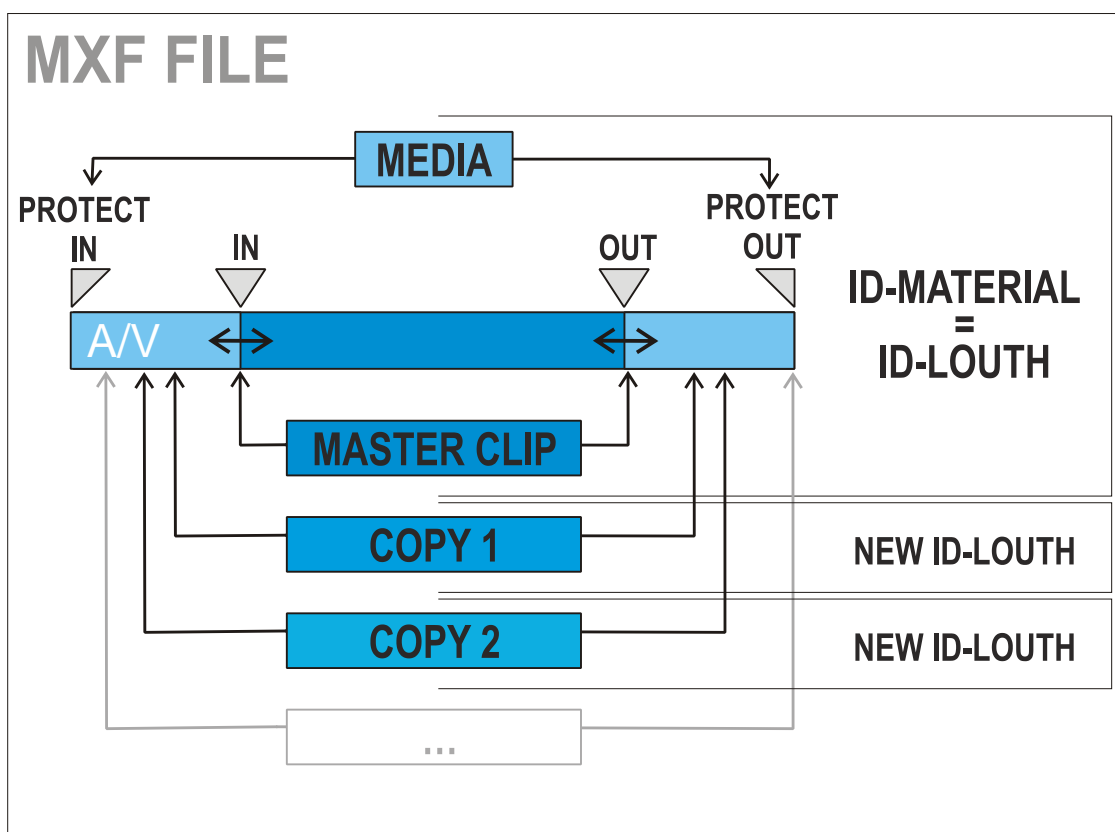
## MEDIA / CLIPS

**Media / Clips** **All** **MasterClip** **Group**

The MXF file is the file containing all data related to a common audio/video data.

The first clip created with this A/V data is called the MasterClip and has the particularity to get the same code for the ID-material and for the ID-louth.

All clips ensued from this masterclip, either by copy, or by update, or by modifying the IN (i.e. short IN) or OUT (i.e. short OUT) point are linked to the MXF file and a different ID-louth is defined for each of them.



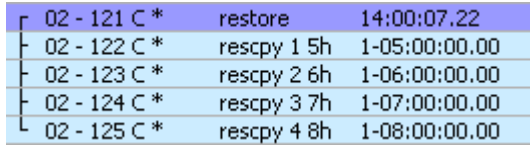
The following options are available for selection:

Option	Description
<b>ALL</b>	Displays all the clips
<b>MasterClip</b>	Displays only the Master Clips



### Note

This filter is helpful when restoring clips, because it will only transfer the original clips, and skip the copies.

Option	Description
<b>Group</b>	Displays both masterclips and clips linked by a “bracket” sign in the clip list:
	

## VIDEO STANDARDS



Select the squares representing the different video standards. Selected items appear in a green square and the clip list is refreshed to display the new selection of clips.

## VIDEO CODECS



Select the squares representing the different video codecs. Selected items appear in a green square and the clip list is refreshed to display the new selection of clips.

## FILE FORMAT



Select the boxes representing the different file formats. Selected items appear in a green box and the XFile list is refreshed to display the new selection of clips.



### Note

DV DIF and MXF P2 file formats are not supported by XFile Lite.

The filter does not work on AVI files.

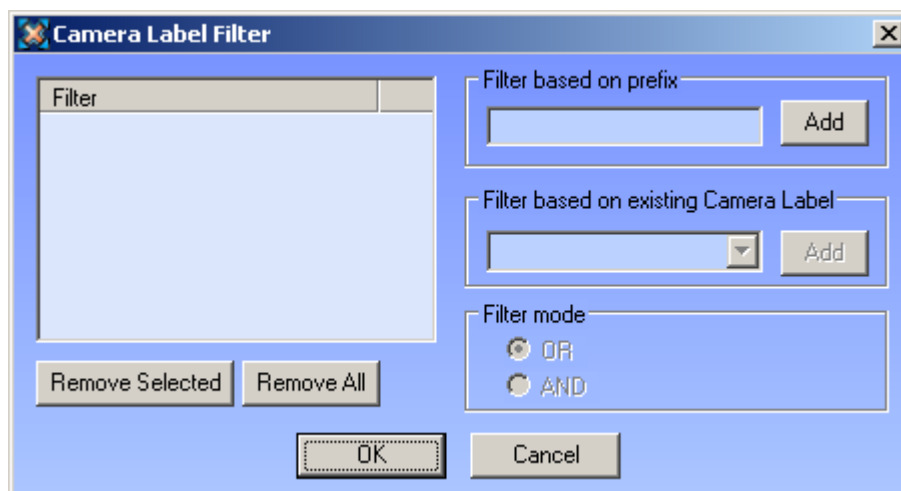
DV DIF and MXF P2 filters work and return a list of files. However, those files cannot be displayed or previewed.



## CAMERA LABEL



Clicking on the button on the right side opens the following dialog box:










### *Filter Based on Prefix*

The **Filter based on Prefix** field allows defining a quick filter based on the first character(s) of a camera label.

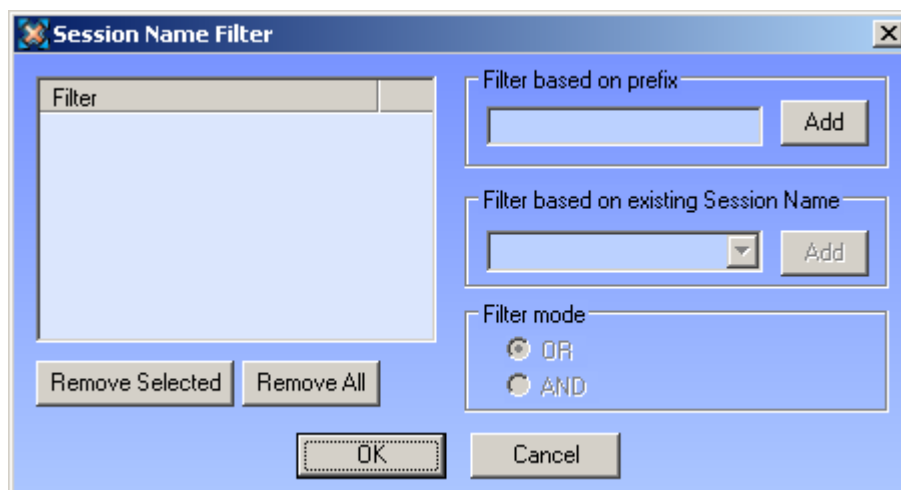
When you click the **Add** button to add the prefix defined to the Filter list, the system adds automatically a "\*" sign after the prefix.

## SESSION FILTERS

This information is saved to the descriptive metadata of all the clips backed up during the 'session'.

Session Name	All	
Session Date	All	
Session Sport	All	
S. Competition	All	
S. Compet. Level	All	
Session Location	All	
Session Team	All	

Clicking on the button on the right side opens the following dialog box:



### *Filter Based on Prefix*

The **Filter based on Prefix** field allows defining a quick filter based on the first character(s) of the session data.

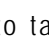
When you click the **Add** button to add the prefix defined to the Filter list, the system adds automatically a "\*" sign after the prefix.

### **CLIP MARKERS**




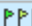


The clip markers allow the users to tag clips into a global selection and to keep this selection from one mode to another.

5 different markers are available and can be combined if necessary.

Select a clip in the clip list and click  to tag the clip or click  to clear the marker.

In the clip list the clips marked are displayed as follows:

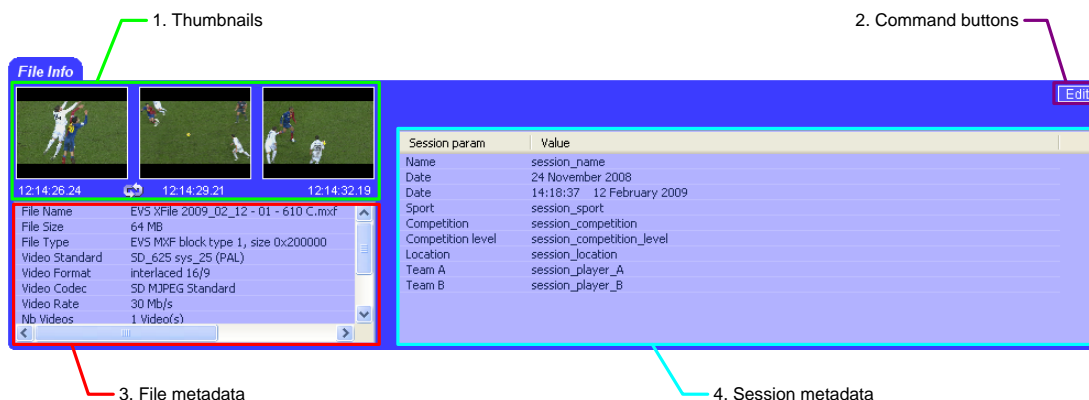
	02 - 411 A *	name_1
	02 - 412 A *	name_2
	02 - 413 A *	name_3
	02 - 414 A *	name_4



#### **Note**

The clip markers are not saved to the header of the MXF file and therefore are temporary. When you quit the XFile Lite software all markers are removed.

## 5.3 FILE INFO AREA



The File Info area displays the following information:

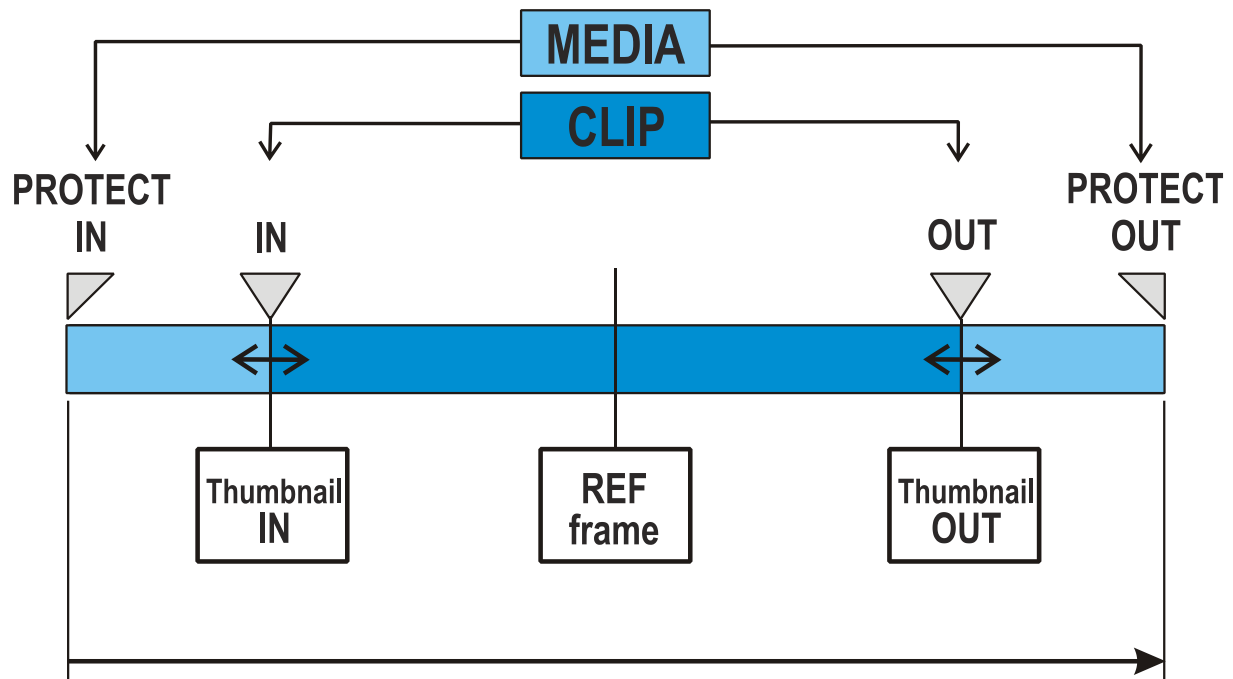
N°	Element	Description
1	Thumbnails	Thumbnails of the IN (i.e. SHORT IN) frame, REF frame and OUT (i.e. SHORT OUT) frame of the clip.
2	Command buttons	Edit button to access the Edit Clip module in which you can edit the clip. See also the section 6.1 'Editing a Clip', on 45
3/4	File and Session Metadata	File and Session parameters with the values saved to the descriptive metadata of the MXF file or in the XML file for OP1A or QT file formats. The values are read-only.

### 5.3.1 THUMBNAILS


The thumbnails defined for each file are extracted from the video files.

The thumbnail shows the following frames from left to right:

- the IN (i.e. SHORT IN) frame,
- the REF frame (automatically defined in the middle of the clip),
- the OUT (i.e. SHORT OUT) frame.



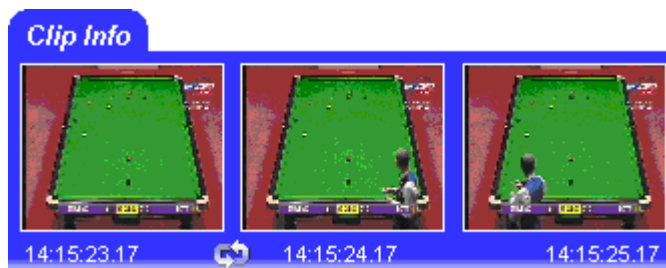
### Update Thumbnails Option

Use the  button to create new thumbnails or to update the current thumbnails.

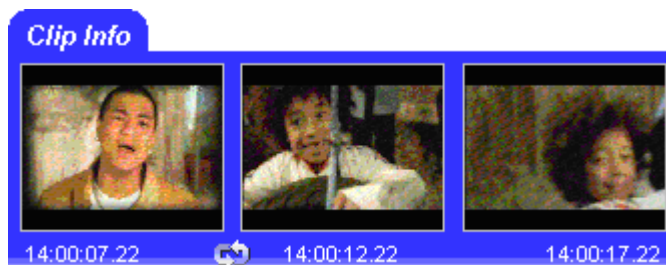
### Aspect Formats

The thumbnail format respects the aspect ratio of the different video signals.

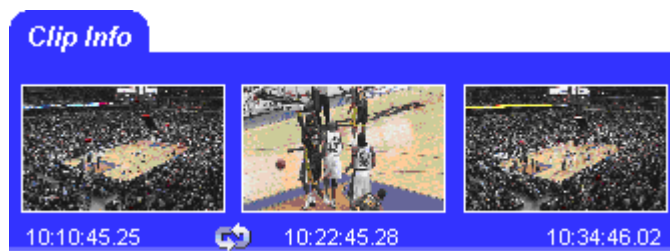
SD clips are displayed with 4:3 aspect ratio.



16:9 SD clips are displayed with the usual black strips.



HD clips are displayed with 16:9 aspect ratio.



## 5.3.2 FILE AND SESSION METADATA

The metadata of the EVS MXF files is stored in the header of the MXF file.

The metadata of backup files having other formats needs to be stored in a metadata XML file.

### *File Metadata*

File Name	backup 2003_07_05 - 01 - 123 A (2).mxf
File Size	64 MB
File Type	EVS MXF block type 1, size 0x200000
Video Standard	SD_625 sys_25 (PAL)
Video Format	interlaced 4/3
Video Codec	Undefined
Nb Videos	1 Video(s)
Audio Codec	PCM
Nb Audios Mono	4 Audio(s)

The parameters displayed in the left area, below the thumbnails, are the common parameters and the A/V parameters given by the XNet: filename and size, video standard and format, number of video signals (SLSM = 3), number of audio tracks, audio type and the number of clips included in this MXF file.

### *Session Metadata*

Session param	Value
Name	session_name
Date	05 July 2003
Date	10:26:12 05 July 2003
Sport	session sport
Competition	session_competition
Competition level	session_competition_level
Location	session_location
Team A	session_player_A
Team B	session_player_B




The parameters displayed in the right area are the current values saved to the XFile Session configuration window. These parameters are common for each clip.

## 5.4 MAINTAINING CLIPS AND FILES

### 5.4.1 MOVING AND COPYING CLIPS BETWEEN FOLDERS

#### INTRODUCTION

The copy, cut and paste buttons allow moving or copying clips from one to another folder:

Command	Use
Cut 	Stores the reference to the selected clip in the Selection tab. The clip remains in the original folder on an orange background until it is pasted.
Copy 	Stores the reference to the selected clip into the Selection tab. The clip is displayed in the original folder on a yellow background until it is pasted.
Paste 	Performs the following actions: <ul style="list-style-type: none"> <li>• Moves the clips that have been cut to the new folder selected in the Folder Management list.</li> <li>• Copies the clips that have been copied to the new folder selected in the Folder Management list.</li> <li>• Removes the moved and copied clips from the Selection tab.</li> </ul>


These functions can be performed on files with any of the following format: EVS MXF, MXF OP1A, Avid MXF OPAtom, MXF OP1A (Std SMPTE), Quick Time movie, Quick Time Reference.

#### HOW TO COPY/MOVE CLIPS TO OTHER FOLDERS




##### Important

Clips are linked to a MXF file. In this mode, the CUT and COPY commands affect the MXF file even if only a clip is selected.


1. In the Folders tree view, select the folder that contains the file to be copied or moved, i.e. the source folder.
2. Select the clips to be copied to one and single destination folder and click the **Copy** button .

The clips are added to the selection and displayed in the Selection tab on a green background.

3. Select the clips to be moved to the same destination folder and click the **Cut** button .

The clips are added to the selection and displayed in the Selection tab on a green background.

4. Select the destination folder:
  - If the destination folder is a subfolder of the source folder, select the subfolder in the folder tree.
  - If the destination folder is not a subfolder of the source folder, click the **Browse** button above the Folder tree view, select the folder and click **OK** to open the destination folder.

5. Select the **Paste** button  to copy and/or move the selected clips to the destination folder.



#### Note

You can remove a clip selected for move/copy by clicking the **Remove from selection** button in the Selection tab or by right-clicking the clip list and selecting **Reset Selection** from the menu.

---

## 5.4.2 DELETING CLIPS/FILES

### HOW TO DELETE A CLIP/FILE

As several clips are linked to a file, the **Delete** command has been split in 2 buttons: **Delete File** and **Delete Clip**. Both commands are available in the upper-right part of the Clip List area of the XFile Lite Work tab.

To mark the clips and the files out, it is advised to change the display to 'Group' in the Media / Clips filter.

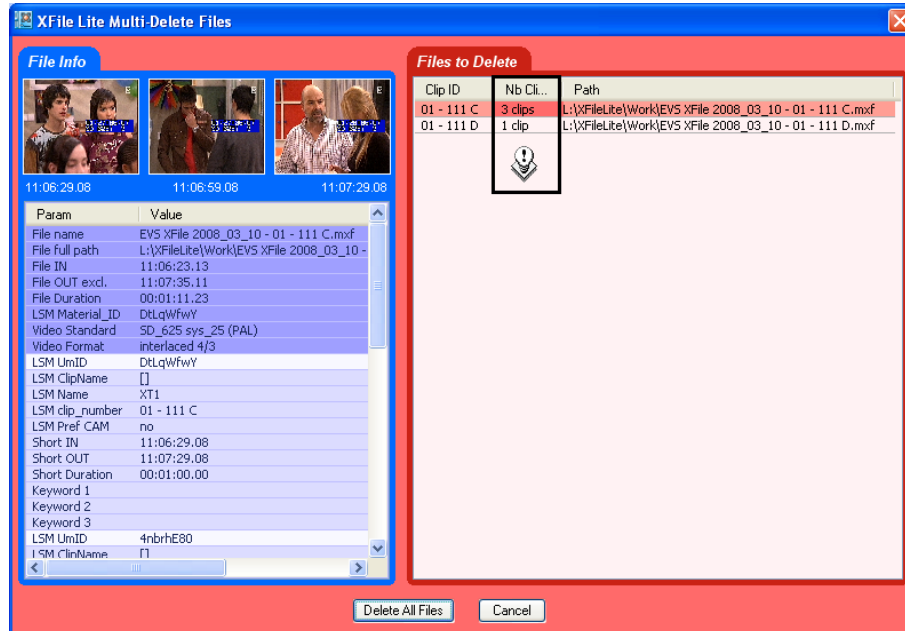
    

The group of clips is represented with brackets in the XFile list.

## HOW TO SELECT AND DELETE SEVERAL FILES

To select several files and delete them, proceed as follows:

1. Press **SHIFT** or **CTRL** and select a batch of files from the clip list.
2. Click **Delete File** to open the XFile Lite Multi-Delete Files window:



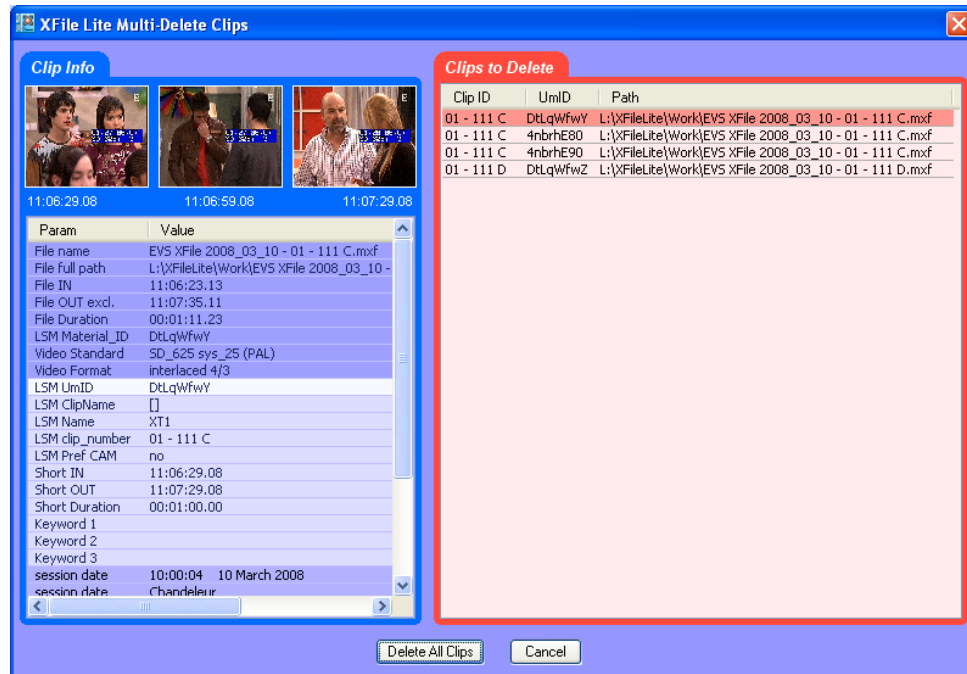
This window allows the operator to review the files before deletion. Pay attention to the number of clips included in each file. Deleting the file will delete all the clips included in this file.

3. Click **Delete All files** to confirm the command or **Cancel** to abort the operation.

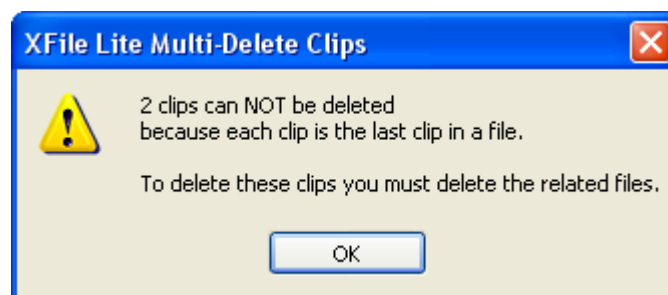


## HOW TO SELECT AND DELETE SEVERAL CLIPS

1. Press **SHIFT** or **CTRL** and select a batch of clips from the clip list
2. Click **Delete Clip** to open XFile Lite Multi-Delete Clips window. This window allows the operator to review the clips before deletion:



3. Click **Delete All Clips** to confirm the command or **Cancel** to abort the operation.
4. If one/several clips are the last clip(s) into the MXF file, the following message notices the operator:



5. Click **OK** to close the message box and to switch to the Multi-Delete Files window (shown on a red background).
6. Click **Delete All files** to confirm the command or **Cancel** to abort the operation.

## 5.4.3 IMPORTING FILES

### INTRODUCTION

EVS MXF files contained in the folder selected in the Folder Tree are automatically displayed in the Clip List, while files with other file formats need to be imported into XFile Lite.

During the Import action, an XML file containing all the metadata for the clip is created for each imported file. With the EVS MXF file format, the metadata is included in the header of the media file itself. As some systems cannot read the MXF header, an XML metadata file is created for each imported EVS MXF file as well. When changes are made to metadata of such a clip, both the EVS MXF header and the EVS XML file are updated simultaneously but priority is given to the XML file to read the metadata.

File formats which can be imported are: MXF (EVS, OP1A), Quick Time .mov, P2 (CONTENTS\CLIP\\*.xml).

### HOW TO IMPORT FILES

To import files into the system, proceed as follows:

1. Click the **Import** button in the upper part of the Clip List.
2. Browse for the folder containing the files to be imported and select the file(s).
3. Click **Open**.
4. Do one of the following:
  - If the folder selected in the Folder Tree is the target folder for the imported files, right-click in the Clip List and select **Re-scan Folder** from the contextual menu.
  - Select the target folder for the imported files in the Folder Tree. The folder is automatically scanned.

Imported files are displayed in the Clip List.

An XML file is created for each imported file.



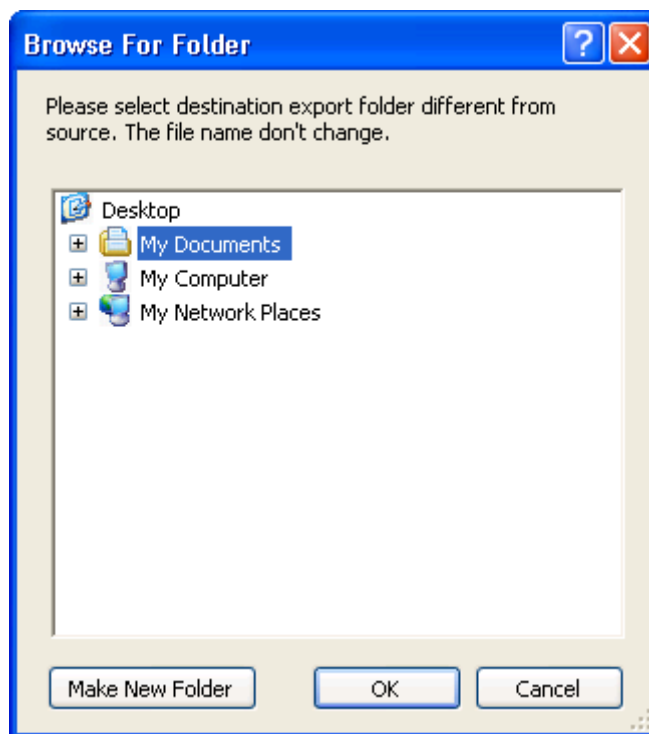
## 5.5 MANUAL CONVERSIONS OF BACKUP FILES

In XFile Lite, manual conversions from 8MB backup files to 2MB backup files, are possible from XFile Lite version 1.02. The converted backup files will be stored in a specified folder; they are not performed via the XT server.

To convert manually EVS MXF files of 8MB blocks to EVS MXF files of 2MB, proceed as follows:

1. Select the file(s) to convert in the Clip List of the Work tab.
2. Right-click to open the contextual menu.
3. Select **Transfer/Convert > Convert EVS MXF 8MB to 2MB**.

The Browse for Folder window opens:



4. Select the folder in which you want to save the converted files.
5. Click **OK**.

The converted backup files are generated and saved in the folder selected in the Browse for Folder dialog box.

## 5.6 BACKUP FILE TRANSFER TO EXTERNAL SYSTEMS

From the Work tab of XFile Lite, it is possible to transfer the backup files to the Avid Transfer Manager.

To transfer backup files to Avid TM, proceed as follows:

1. Select the file(s) to transfer in the Clip List of the Work tab.
2. Right-click to open the contextual menu.
3. Select **Transfer/Convert > Transfer to Avid TM**.

## 6. External modules

---

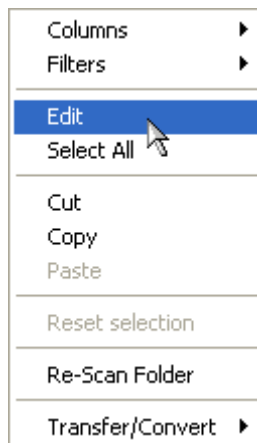
The different external modules are available from XFile Lite.

### 6.1 EDITING A CLIP

Currently, you can edit clips/files backed up in EVS MXF, MXF OP1A or Quick Time Movie.

To edit a clip or file, select it in the Clip List, and then do one of the following:

- use the right-button of the mouse to access the contextual menu and select **Edit**:

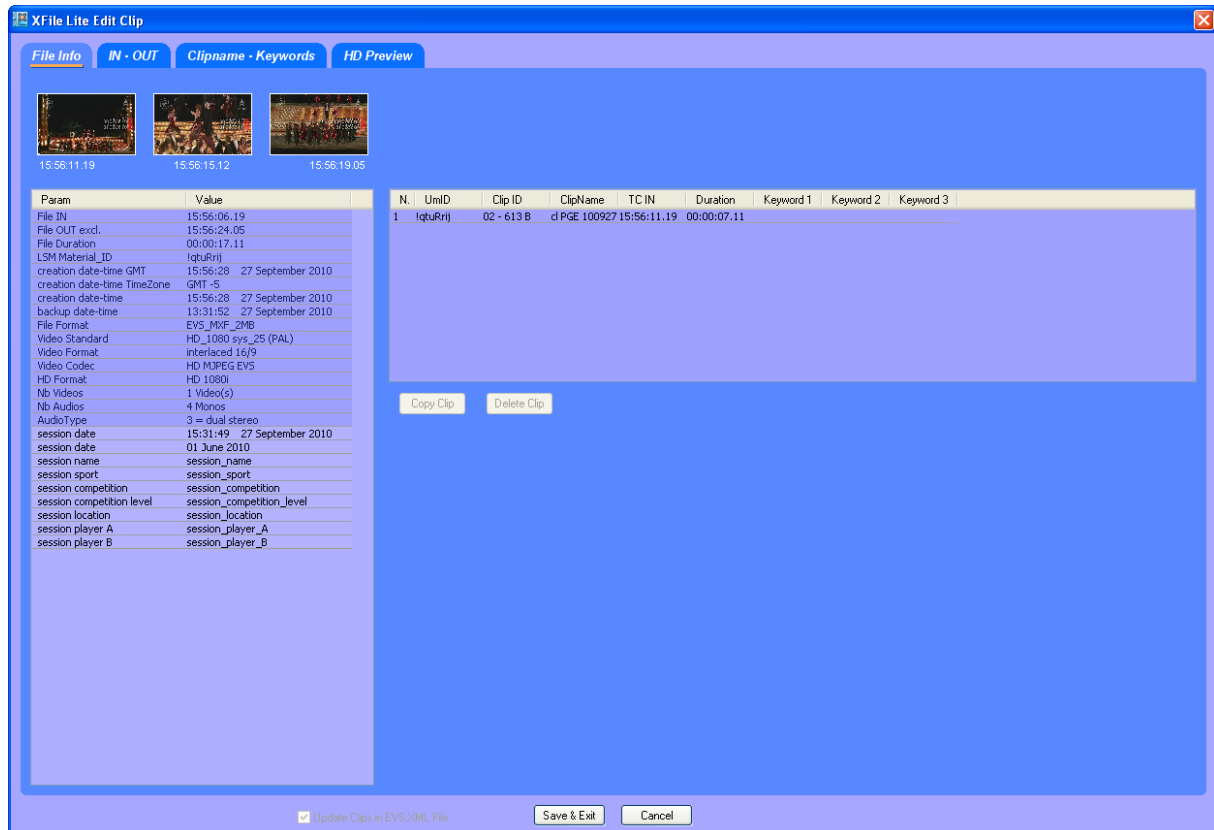


- click the **Edit** button in the upper right corner of the File Info area.

The XFile Lite Edit Clip window appears. It contains several tabs described below.

## 6.1.1 FILE INFO TAB

The first tab shows all current data for the selected file:



The list box in the right area displays all clips saved in a common MXF file. Use the **Copy Clip** **Delete Clip** buttons to make a copy of a selected clip or to delete a clip into the MXF file.



### Note

The MXF Doctor software is integrated to the Edit clip module. When editing a clip with a corrupted file index, the system automatically detects the error, notifies the user and starts the repair process. A progress bar appears in the file info tab while repairing the file.

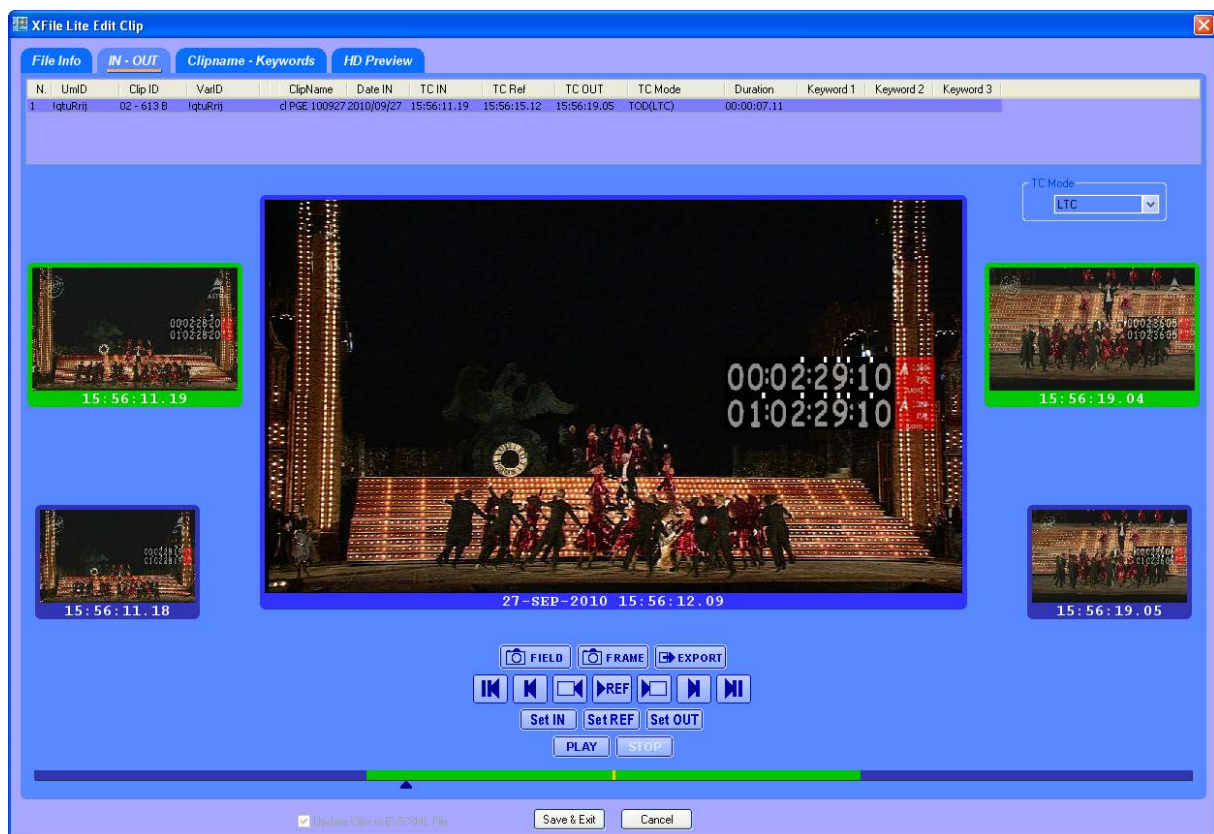
## 6.1.2 IN – OUT TAB

In the IN-OUT tab, the user can, among others, modify the IN and/or OUT points, define a REF frame, modify the aspect ratio, etc.



### Note

The time code information displayed in the XFile Lite Edit Clip window is in LTC even if the clip has been created with VITC as primary time code.



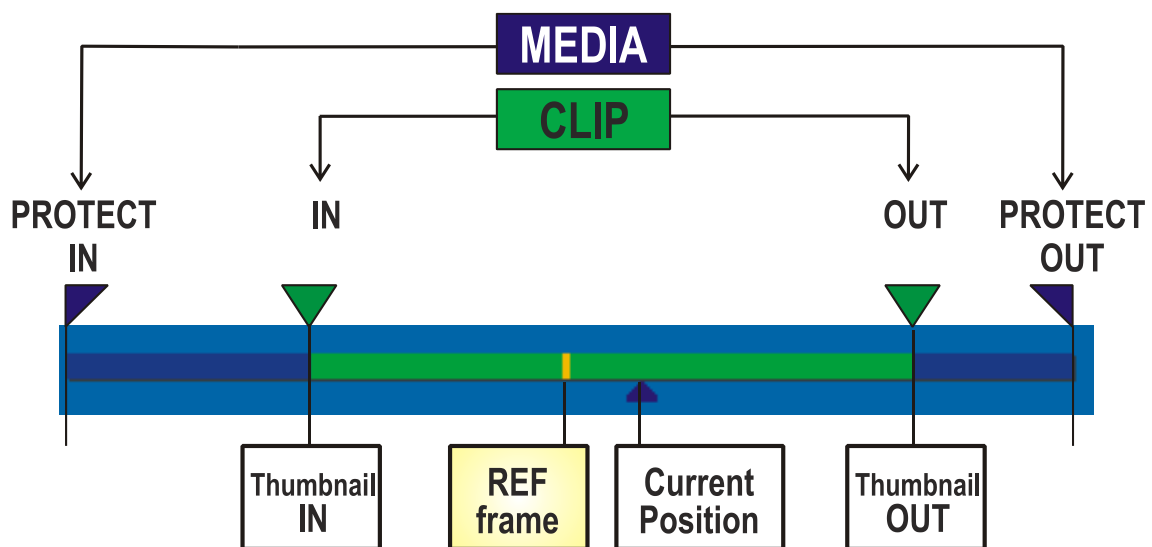
## TC MODE

The TC Mode field allows selecting the time code to be displayed in the Edit Clip window. The user can choose among the following values:

TC Mode Name	Description
Legacy	LTC time code without date information, as it was defined before Multicam V 9.00.
LTC Original	LTC time code with date information, as it is defined from Multicam V 9.00.  LTC time code defined when the clip was recorded on the XT[2] server.
User Original	Time code defined as the user time code when the clip was recorded on the XT[2] server.
LTC	LTC time code redefined after the clip was recorded on the XT[2] server.  If the LTC time code has not been redefined, this field has the value of the LTC Original time code.
User	User time code redefined after the clip was recorded on the XT[2] server.  If the User time code has not been redefined, this field has the value of the User Original time code.

## TIMELINE

The timeline at the bottom of the window allows you to search the clip in jog mode





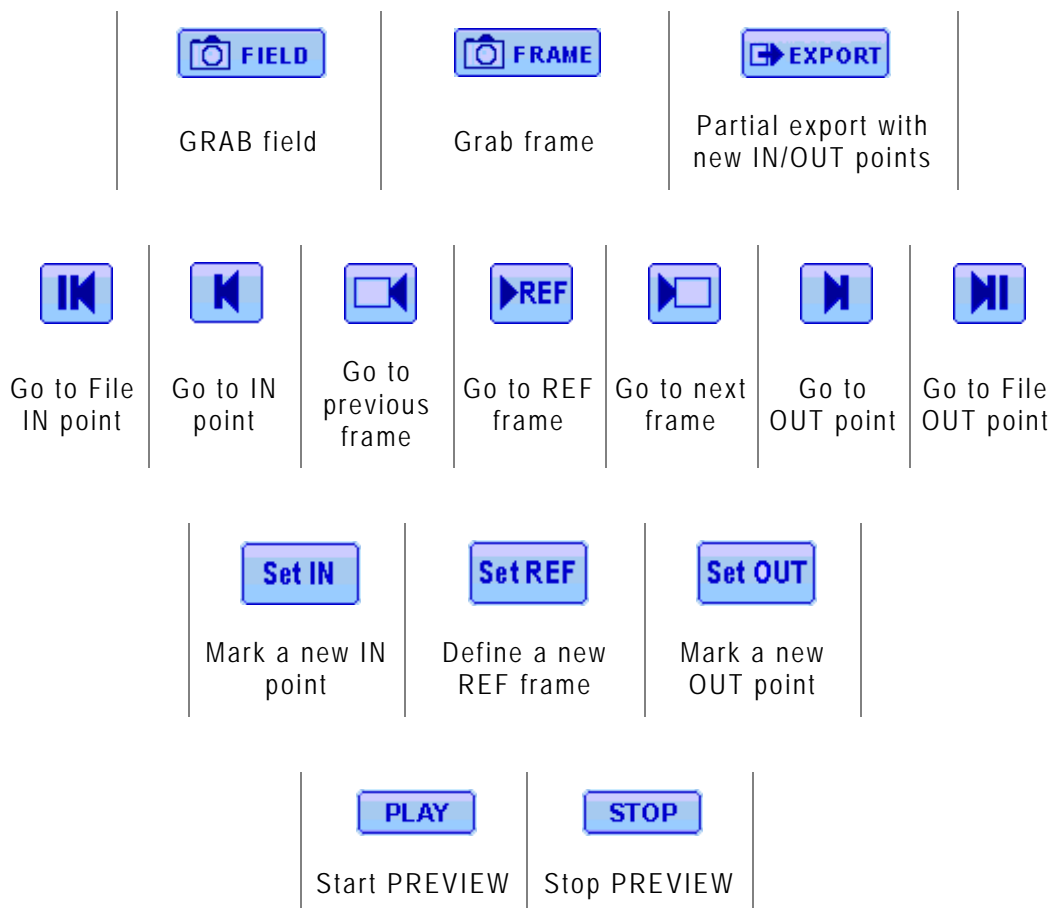
## BUTTONS

The first series of buttons gathers the GRAB & EXPORT functions.

The second series of buttons gathers the SEARCH functions.

The third series of buttons gathers the commands which modify the clip.

The fourth series of buttons gathers the PREVIEW functions.



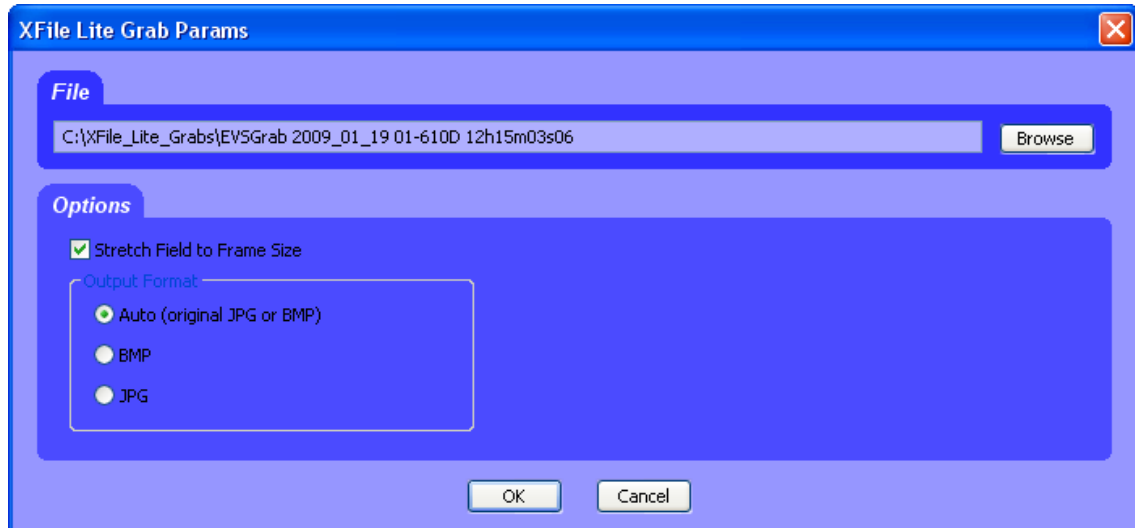
### Note

The ShuttlePRO can be used to perform the commands corresponding to the buttons of the IN-OUT tab in the Edit Clip window. For more information on the ShuttlePRO configuration and use with XFile Lite, refer to section 6.2 'ShuttlePRO Use in Edit Clip Module', on page 54.

## 6.1.3 GRAB OPTIONS



From the IN-OUT tab of the Edit Clip module, the operator can select one image in the main window (current position of the cursor) and click the **Grab Field** button or the **Grab Frame** button to open the following dialog box:



### *File Area*

Select the filename and the destination folder to save the JPG/BMP files.

### *Options Area*

#### Stretch field to frame size

This option is only available with the Grab Field function. Should the **Grab Frame** button have been clicked, the option is dimmed.

Enabling this option will automatically stretch the 'field image' to the original 'frame size'

#### Output format

The automatic selection of the output format depends on the previous option. If the images are not modified by stretching the JPG format is defined and if the images are modified by stretching the BMP format is selected. The user can force the selection of one format.



#### Note

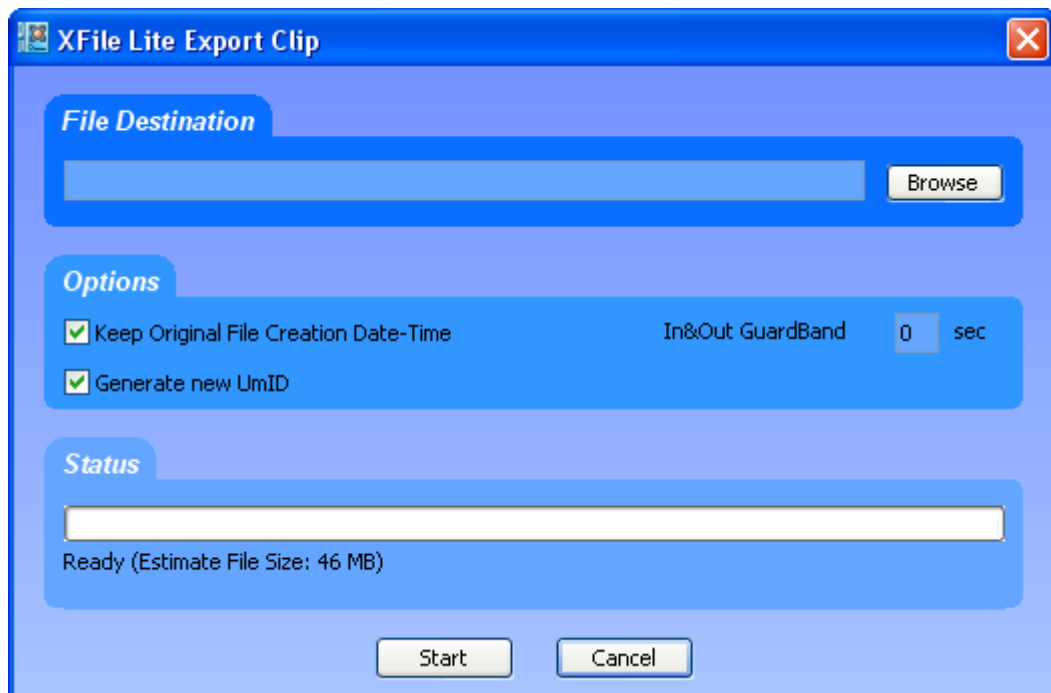
No compression artifact is added to this file creation process, so the original quality of the image is kept.

## 6.1.4 EXPORT OPTION



The Export option makes it possible to extract a portion of clip from its original clip and export it to a different MXF file. In this case a different UmID is assigned to the new clip.

When the IN and OUT points of the new clip are defined, click the **Export** button to open the following dialog box:



### *File Destination Area*

Select the filename and the destination folder to save the new MXF file.

### *Options Area*

#### **Keep original file creation date-time**

Enabling this option will keep the creation date-time of the original clip even if the UmID is re-defined.

#### **Guardbands**

Define the duration of A/V material before and after the IN/OUT points.

#### **Generate new UmID**

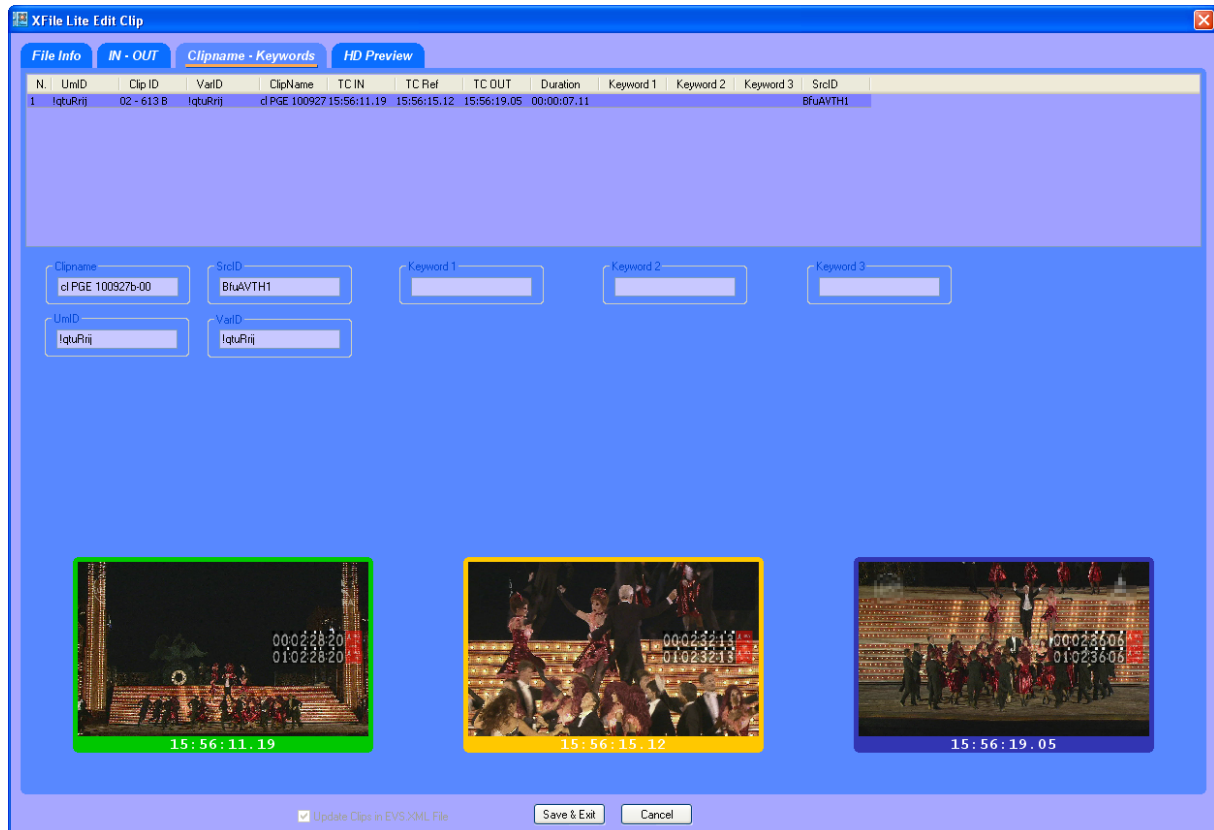
Set this option to generate a new UmID for the new clip created. (default)

Click the **Start** button to create the new file.

## 6.1.5 CLIPNAME – KEYWORDS TAB

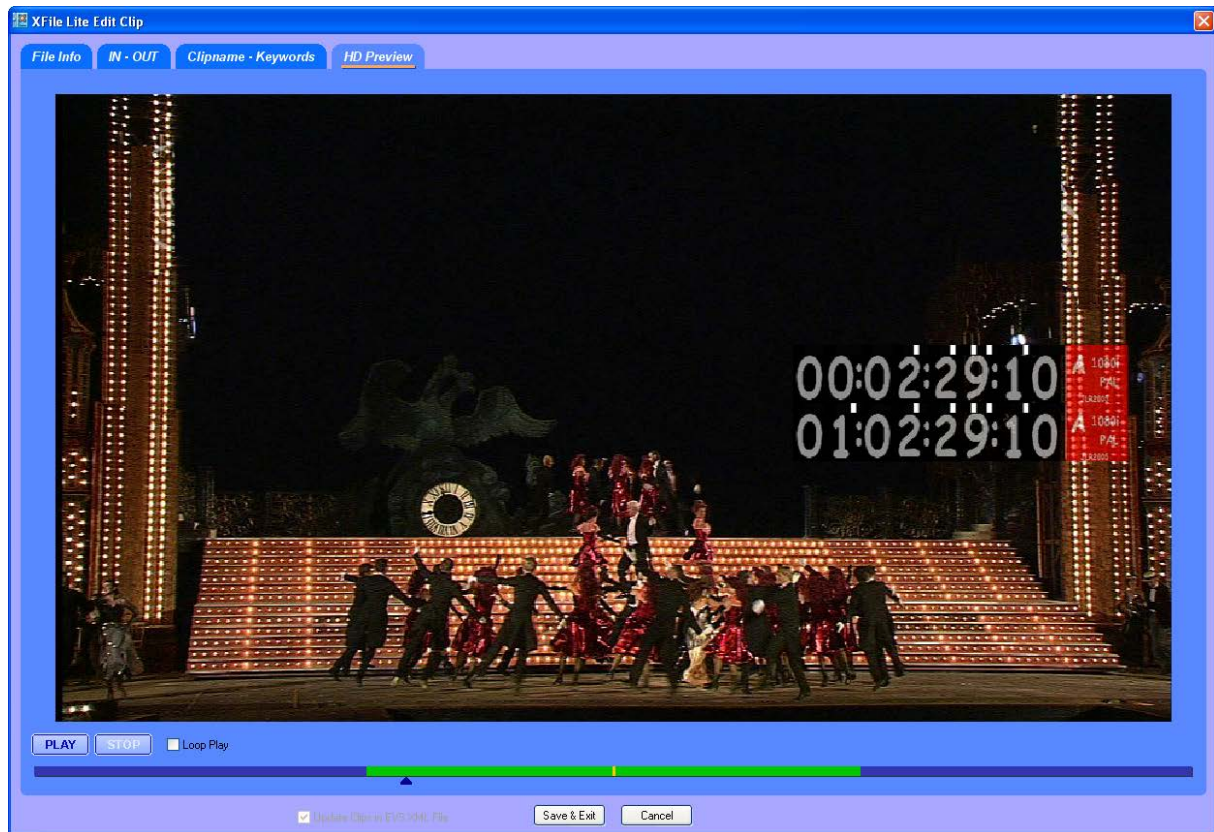
In the Clipname –Keyword Tab, you can modify the UmID (ID louth), as well as modify or add a ClipName or keywords.

To modify the UmID, VarID, Clipname or keywords, select a clip in the list. Then enter the new information in the related field. The new clipname/keyword is updated in the upper list.



## 6.1.6 HD PREVIEW TAB

When editing an HD clip, the HD Preview tab is added to the Edit Clip module in order to play back the clip with full quality preview in a larger view.



## 6.2 SHUTTLEPRO USE IN EDIT CLIP MODULE


From XFile Lite version 1.02, the ShuttlePRO can be used to perform the commands corresponding to the buttons of the IN-OUT tab in the Edit Clip module.

This chapter explains how to install and configure the ShuttlePRO for use in the Edit Clip module. It also provides the ShuttlePRO and shortcut commands in the IN-OUT tab of the Edit Clip module.

### 6.2.1 SHUTTLEPRO INSTALLATION AND CONFIGURATION

To be able to use the ShuttlePRO, you need to install it on the XFile workstation and configure it for use with the XFile application.

To install and configure the ShuttlePRO, proceed as follows:

1. Double-click the executable file `cdi_shuttle_win_x.x.xx.exe` (x.x.xx correspond to the version number) delivered with the ShuttlePRO and follow the installation wizard.
2. When this is installed, right-click the ShuttlePRO icon  on the right of the Application toolbar. A contextual menu opens.



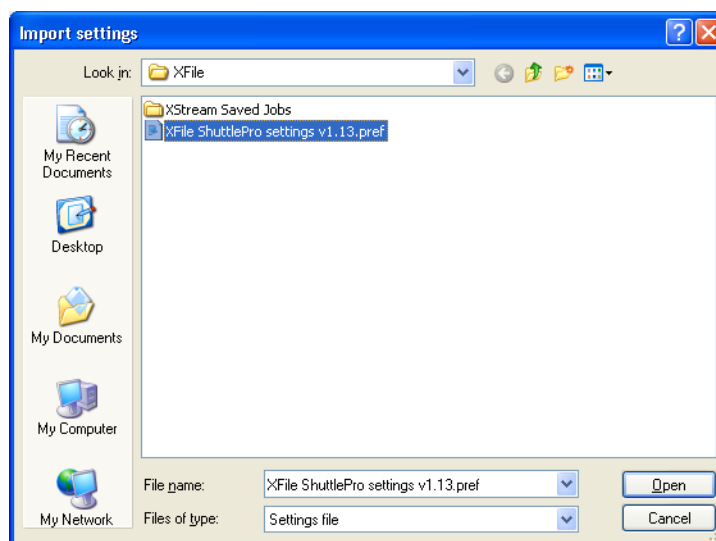
3. Select **Open Control Panel** from the contextual menu.

The Shuttle Device Configuration window opens.

In the ShuttlePRO tab, click the **Options** button and select **Import Settings** from the contextual menu:



The Import Settings window opens:



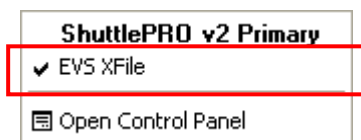
4. Select the file `XFile ShuttlePRO Settings Vx.xx.pref` (`Vx.xx` referring to the file version) that contains the ShuttlePRO settings to be loaded and click **APPLY**.

The **Application Setting** field in the Shuttle Device Configuration window is updated with the reference to the XFile settings:



5. Click **APPLY** to confirm that the XFile settings are to be applied to the ShuttlePRO.

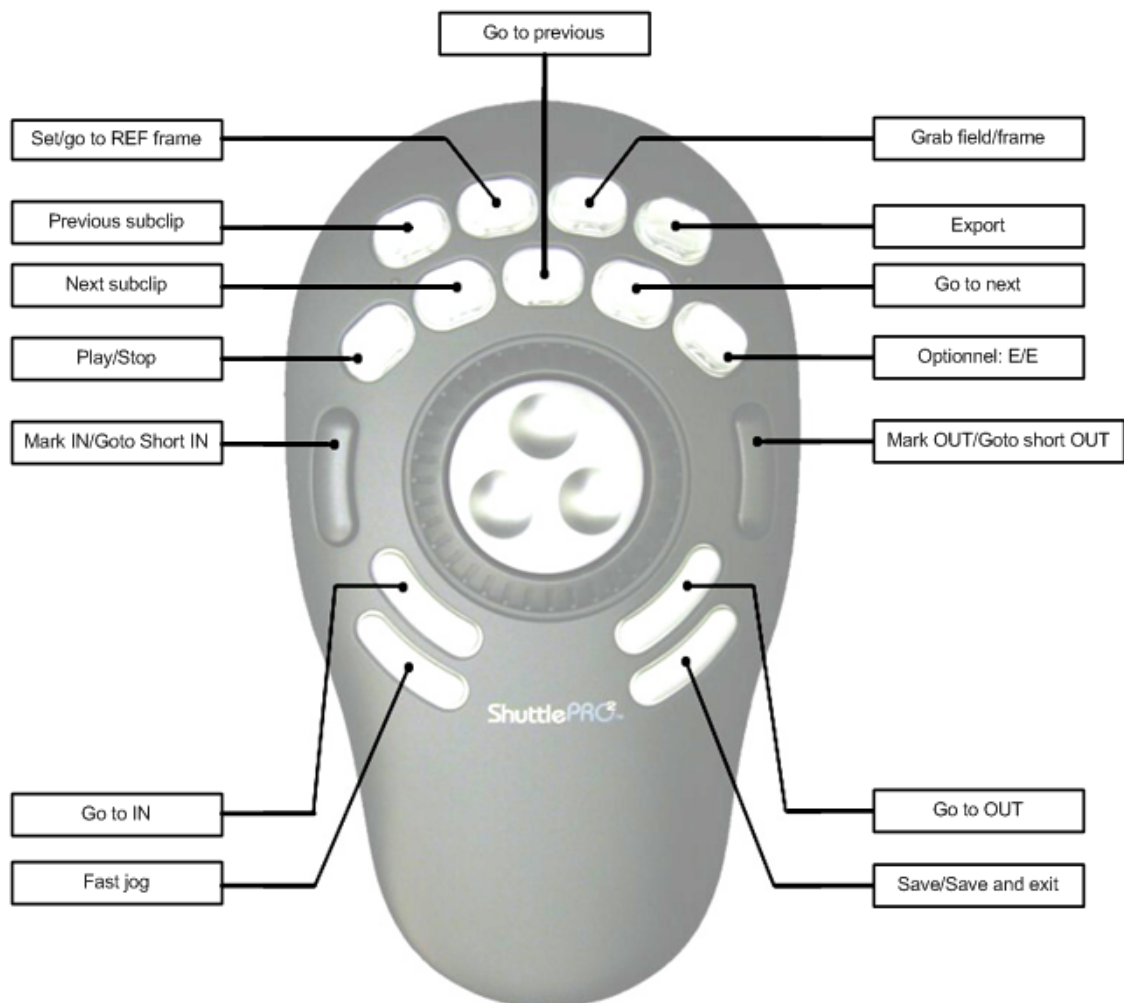
To ensure that the XFile settings are active, right-click the ShuttlePRO icon in the Application bar and check that 'EVS XFile' is preceded by a check mark in the contextual menu:





## 6.2.2 SHUTTLEPRO COMMANDS IN THE EDIT CLIP MODULE

The drawing below shows the various ShuttlePRO commands in the Edit Clip module:



The following table describes the action that can be performed and specifies the corresponding keyboard shortcut:

ShuttlePRO Command	Keyboard Shortcut	Command Description
<b>BUTTONS</b>		
Mark IN	i	Marks a Short IN point
Mark OUT	o	Marks a Short OUT point
Go to Short IN	CTRL+i	Goes to the Short IN point
Go to the Short OUT	CTRL+o	Goes to the Short OUT point
Go to IN	a	Goes to the Protect IN point
Go to OUT	z	Goes to the Protect OUT point
Play/Stop	<space bar>	Play/pause of the preview
Save	S	Saves the changes
Save & exit	CTRL+s	Saves the changes and exists the Edit Clip module.
Cancel	<esc>	Cancels the changes and exists the Edit Clip module.
Set REF Frame / Go to REF Frame	r / CTRL+r	Defines the current picture as the REF frame / goes to the REF frame.
Grab field/frame	g / CTRL+g	Captures the top field/frame of the current picture.
Go to ↑ subclip	<arrow up>	Selects the previous subclip in the list.
Go to ↓ subclip	<arrow down>	Selects the next subclip in the list.
Export	CTRL+e	Opens the Export Clip dialog box.
Fast jog	j	Switches between the Jog and Fast Jog mode.
E/E	l	For future use in the tool that will allow browsing in trains.
Go to previous	<arrow left>	Goes to the previous picture. CTRL+←: jump of 10 frames backwards ALT+←: jump of 1 sec. backwards

ShuttlePRO Command	Keyboard Shortcut	Command Description
Go to next	<arrow right>	Goes to the next picture. CTRL+→: jump of 10 frames forwards ALT+→: jump of 1 sec. forwards
<b>JOG</b>		
Jog Left	<arrow left>	Goes to the previous picture.
Jog Right	<arrow right>	Goes to the next picture.

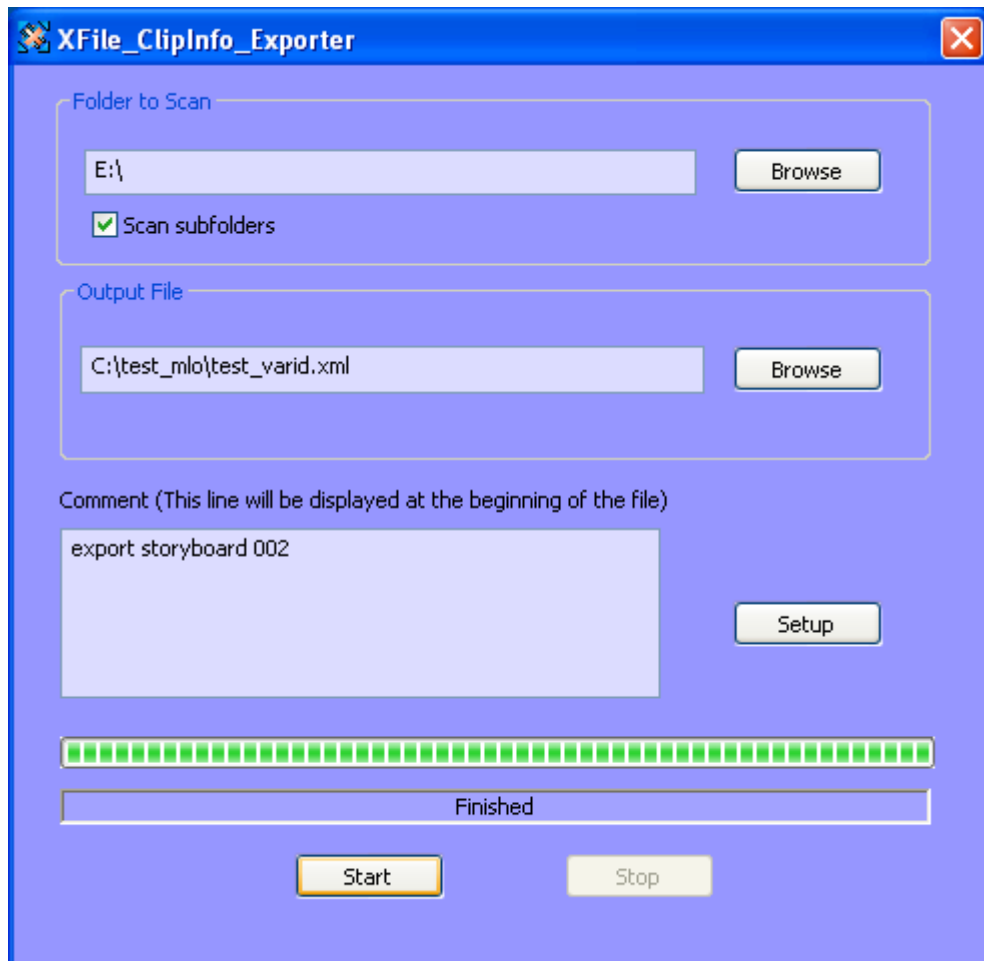
## 6.3 XFILE CLIP INFO EXPORTER

The XFile Clip Info Exporter is an external module that allows to export the clip metadata of all the clips located in a given folder to an XML, TXT or CSV file. This option can be useful for printing purposes.

The user can access this module:



- by clicking the XFile Clip Info Exporter icon on the Desktop
- OR
- by selecting the tool name from the menu **Start > All Programs > EVS Broadcast Equipment > XFile > XFile Clip Info Exporter**.



## 6.3.1 HOW TO EXPORT DATA TO AN XML, TXT OR CSV FILE

You can export the metadata of all the clips located in a given folder to a TXT, XML or CSV file.

To export data to an external file, proceed as follows:

1. Double-click the **XFile Clip Info Exporter** icon on the desktop to open the **XFile\_ClipInfo\_Exporter** window.  
Click the **BROWSE** button in the Folder to Scan area. The Browse for Folder window is displayed.
2. In this window, select the folder where the MXF files are saved and click **OK** to confirm the selection.
3. Click the **BROWSE** button in the Output File area. The Save As window is displayed.
4. In this window, select the folder where the output file should be stored, the type of requested file and type the name of the output file.
5. Click the **SAVE** button to confirm.
6. In the XFile ClipInfo Exporter window, click the **START** button to proceed to the file export.

The new file is a standard TXT, XML or CSV file, which can be easily exported to any other software.

## 6.3.2 CONFIGURING THE XFILE CLIP EXPORTER

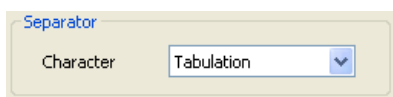
Configuring the XFile Clip Exporter consists in specifying which metadata fields have to be exported to the output files. The user configures the Exporter in the Configuration window accessed via the **Setup** button on the XFile ClipInfo Exporter window:



## 6.3.3 FIELDS IN THE CONFIGURATION WINDOW

The following table describes the various fields in the Configuration window:

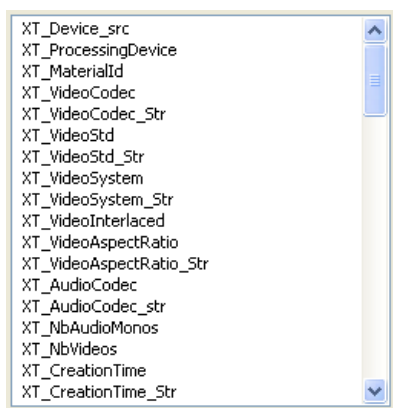
Field	Description
-------	-------------



Drop-down list box in which the user selects the separator to be used in the TXT and CSV files to separate the metadata values of a clip.

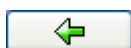
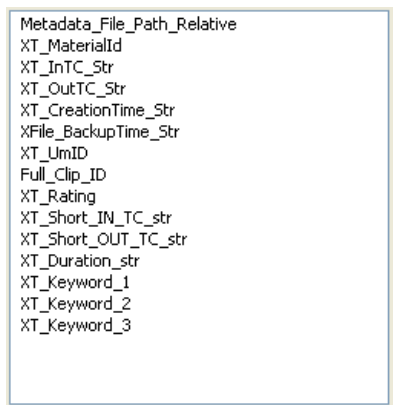
Left list box

List of all selectable clip metadata.



Right list box

Selection of clip metadata that will be exported to an output file.






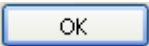
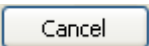
Button to remove from the selection the clip metadata selected in the right table.



Button to add to the selection the clip metadata selected in the left table.







Button to import a configuration file. The configuration file that will automatically be imported needs to be located in the folder C:\Program Files\EVS Broadcast Equipment\XFile and be called XFile\_ClipInfo\_Exporter\_Config\_File.xml.

Field	Description
	Button to export the selection of metadata fields into an external file.  The configuration file is generated in the folder C:\Program Files\EVS Broadcast Equipment\XFile and is called XFile_ClipInfo_Exporter_Config_File.xml.
	Button to move down one position the clip metadata selected in the right table.
	Button to move up one position the clip metadata selected in the right table.
	Button to confirm the changes in the Configuration.
	Button to leave the Configuration window without applying the changes.

### 6.3.4 HOW TO EXPORT THE XFILE CLIP EXPORTER CONFIGURATION TO A FILE

The configuration of the XFile Clip Exporter can also be saved to a file. This file can then easily be copied to other workstations. This ensures that all workstations on an event generate the same metadata files.

To export the XFile Clip Exporter configuration to an XML file, proceed as follows:

1. In the XFile Clip Exporter module, click the  button to access the Configuration window.
2. In the left table, select the fields that you want to include in the configuration file. Use **CTRL**+click for multiple selection.
3. Click the  button to move them to the right list box which contains the selection of metadata fields to be included in metadata output files.
4. If some fields have to be removed from the selection, select them in the right list box and click the  button.
5. When you generate TXT or CSV files, select a separator from the **Character** field.
6. Click the  button.

The file is generated in the folder C:\Program Files\EVS Broadcast Equipment\XFile and is called XFile\_ClipInfo\_Exporter\_Config\_File.xml.



## 6.3.5 HOW TO IMPORT THE XFILE CLIP EXPORTER CONFIGURATION TO A FILE

When a user receives a configuration file generated with the XFile Clip Exporter and needs to apply this configuration to its XFile Clip Exporter module, he needs to import the configuration file.





### Note

In the folder C:\Program Files\EVS Broadcast Equipment\XFile, rename the file `XFile_ClipInfo_Exporter_Config_File.xml` in order not to overwrite it during the import procedure detailed below.

---

To import the configuration file, proceed as follows:

1. Place the configuration file (called `XFile_ClipInfo_Exporter_Config_File.xml`) in the folder `C:\Program Files\EVS Broadcast Equipment\XFile`.
2. Open the XFile Clip Exporter module by clicking the corresponding icon on the Desktop.
3. Select the  button to open the Configuration window.
4. Click the  button to import the configuration file.

The metadata fields in the right list box are updated with the data from the configuration file. From then on, the metadata fields specified in the right list box will be included in the output files generated with the XFile Clip Exporter module.

## 6.4 STORYBOARD

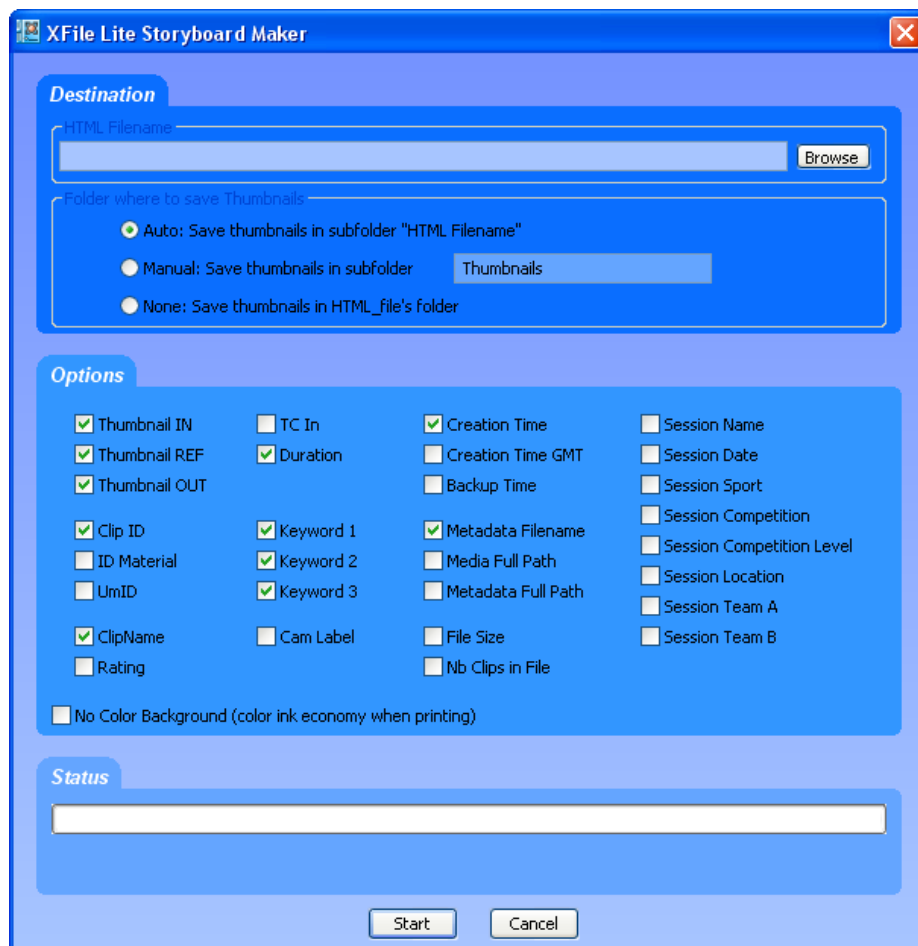
In the XFile Lite window, the **Storyboard** button is available for exporting DATA to HTML file format.

### 6.4.1 HOW TO EXPORT DATA TO HTML FILE (STORYBOARD)

To export data to an HTML file, proceed as follows:

1. Click **Storyboard** in the upper right corner of the Clip List or select **Export** in the menu bar and then **Storyboard Maker**.

The following dialog box opens:



2. Enter a filename for the HTML file.
3. Define a folder to save the thumbnails.
4. Select the data to include in the HTML file.
5. Click the **Start** button to proceed with the HTML export.

The HTML output file is similar to the screenshot below:

**Storyboard EVS**

File creation time: 2010/09/27 - 16:20:01

Clips from L:\XFile Lite\Work\Event C - (Data)

Thumbnail IN	Thumbnail REF	Thumbnail OUT	Clip ID	Clip Name	TC IN	Duration	Creation Date Time	Metadata Filename
			02 - 614 C	cl PGE 100927b-01	15:56:11.19	00:00:07.11	2010/09/27 - 15:56:28	EVS XFile 2010_09_27 - 02 - 614 C.evs.xml
			02 - 613 B	cl PGE 100927b-00	15:56:11.19	00:00:07.11	2010/09/27 - 15:56:28	EVS XFile 2010_09_27 - 02 - 613 B.evs.xml

Total: 2 clips

# Notes

---

**EVS Broadcast Equipment**

Liège Science Park  
16, rue Bois St Jean  
B-4102 Ougrée  
Belgium



Corporate  
Headquarters  
**+32 4 361 7000**

North & Latin America  
Headquarters  
**+1 973 575 7811**

Asia & Pacific  
Headquarters  
**+852 2914 2501**

Other regional offices  
available on  
**[www.evs.tv/contact](http://www.evs.tv/contact)**



To learn more about EVS go to **[www.evs.tv](http://www.evs.tv)**