

# EnVivo

User Manual

## Car MP3 Modulator with charging function





## CONTENTS

<b>1.</b>	<b><i>PREFACE</i></b> .....	<b>4</b>
<b>2.</b>	<b><i>NOTICE</i></b> .....	<b>4</b>
<b>3.</b>	<b><i>FEATURES</i></b> .....	<b>4</b>
<b>4.</b>	<b><i>Buttons and DISPLAY</i></b> .....	<b>5</b>
	<b>4.1 Operation</b> .....	<b>5</b>
	<b>4.2 LCD Display</b> .....	<b>5</b>
<b>5.</b>	<b><i>Upload music to the player</i></b> .....	<b>6</b>
<b>6.</b>	<b><i>operating instructions</i></b> .....	<b>8</b>
	<b>6.1 Play music from the player</b> .....	Error! Bookmark not defined.
	<b>6.2 Play the music from your SD card</b> .....	<b>8</b>
	<b>6.3 Play the music from a USB stick</b> .....	<b>9</b>
	<b>6.4 Play the music from an external audio device</b> .....	<b>10</b>
<b>7.</b>	<b><i>Operating by the remote control</i></b> .....	<b>10</b>
<b>8.</b>	<b><i>TROUBLE SHOOTING</i></b> .....	<b>12</b>
<b>9.</b>	<b><i>Specifications</i></b> .....	<b>13</b>
<b>10.</b>	<b><i>VERWIJDERING</i></b> .....	<b>13</b>

## 1. PREFACE

Please read this user's manual carefully before use.

All information in this booklet is subject to change without notice due to technical reasons. For your convenience, always check for the latest version on the support website.

## 2. NOTICE

1. Do not use the product in extremely hot, cold, dusty or humid environments.
2. Prevent friction with hard objects, or it may lead to surface abrasion or hardware damage.
3. Avoid the player from falling down from a high place, or it may damage the screen or other hardware.
4. Do not wipe the surface of the player with alcohol, benzene or thinners.
5. Do not disconnect the device when formatting, uploading and downloading data. Doing this can lead to loss of data.
6. In order to avoid mis-operation, we strongly recommend you to manage your files in the player via your computer/laptop.

## 3. FEATURES

1. 1.44 inch big LCD screen.
2. Goose neck design for convenient use.
3. Supported audio formats: MP3 & WMA.
4. Supports SD card and USB
5. Transmits any audio source with a 3,5mm jack outlet
6. Doubles as a memory stick – plug and play for data back up.
7. Transfer your favorite music to your car stereo wirelessly.
8. Support 7 EQ modes: Jazz, DBB, Normal, Rock, Pop, Classic & Country.
9. Multilingual menu
10. Frequency range: 87,5 – 108,0 MHz
11. IR Remote control included
12. Automatically powers on when plugged into your cars 12V socket
13. Supports Windows 2000/XP/VISTA and Windows 7, Windows 8.
14. Can charge mobile devices like smartphones, MP3/MP4 players, etc.

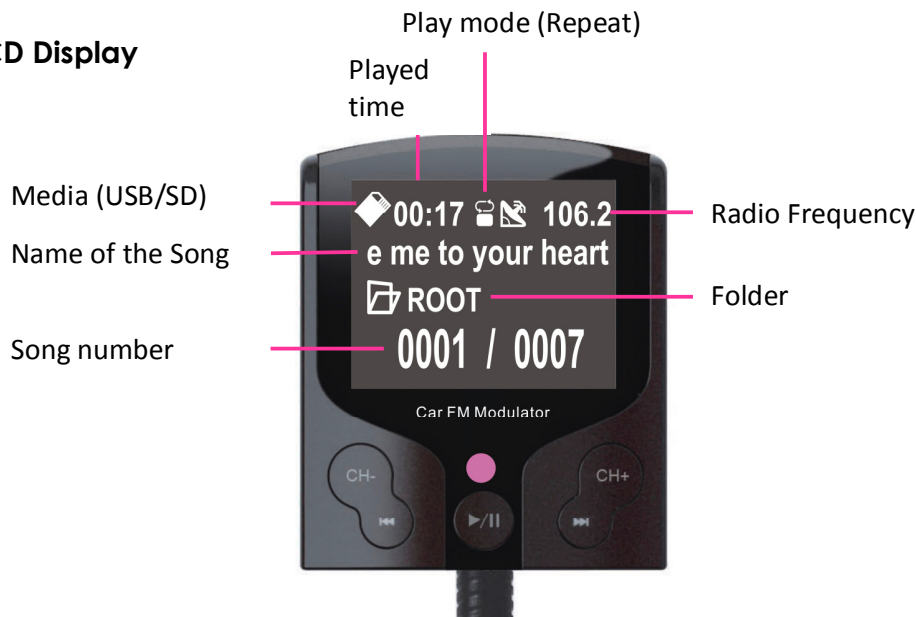
## 4. BUTTONS AND DISPLAY

### 4.1 Operation

- **▶/||** Play / pause. When you plug in your Car MP3 Player into the 12V socket, it will automatically start to play. **Press:** Will pause the current track. **Press again** to play. The current track name will be shown in the display.
- **⏮** **Short press:** Previous song. **Long press:** Volume down
- **⏭** **Short press:** Next song. **Long press:** Volume up
- **(▶/||) CH+** In Pause mode, **Press and hold** the CH+ button to enter the file selection menu, in which you can go from one folder to another.
- **(▶/||) CH-** In Play mode, **Press and hold** the **CH+** button to enter the main menu, in which you can change the playback mode, equalizer settings, and menu language.
- **CH+** Find the next frequency
- **CH-** Find the previous frequency
- **2,5mm Jack:** Connect with audio device via 2.5mm to 3.5mm audio cable
- **SD Card Slot:** Plug in SD card
- **USB port:** Data transfer with PC, plug in USB stick, Charge smartphone/tablet/MP3/MP4 player

NOTE: When navigating in the menus, use the **⏮ / ⏭** to move up/down, and the **▶/||** to execute command.

### 4.2 LCD Display

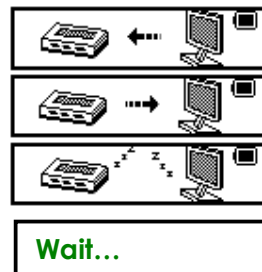


**Data Downloading from PC/Laptop:**

**Data Uploading to PC/Laptop:**

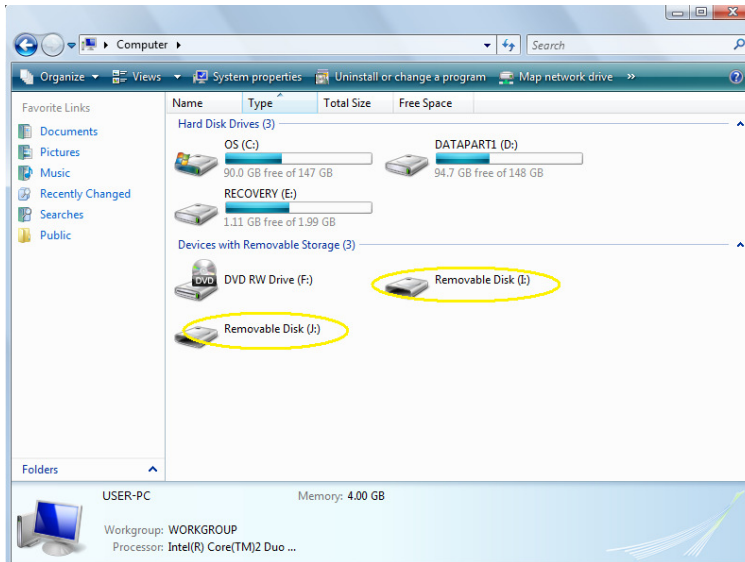
**Suspending Mode:**

**Charging Mode:**



## 5. UPLOAD MUSIC TO SD CARD IN CAR MP3 MODULATOR

1. Insert SD card in the Car MP3 Player
2. Connect the Car MP3 Player to the PC via the enclosed USB cable.
3. A **Removable Disk** will appear when you double click **My Computer** on the Desktop. This removable disk represents the SD card slot.



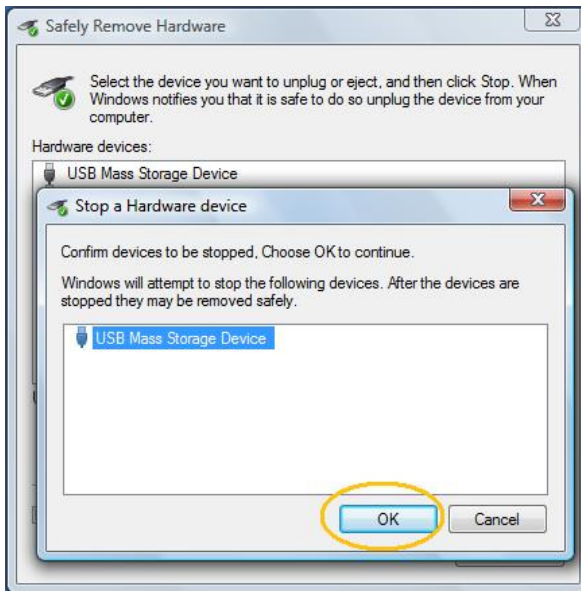
4. Drag and drop files into the Removable Disk, which represents the internal memory of the player.
5. Double click on "Removable Disk" to open it.
6. You can also create folders in the Removable Disk.
7. Please **DO NOT** disconnect the player when you are downloading or uploading files.
8. Please use 'safe removal' after finishing the operation. For Window OS, you should double click on the "Safe Remove Hardware" icon like below:



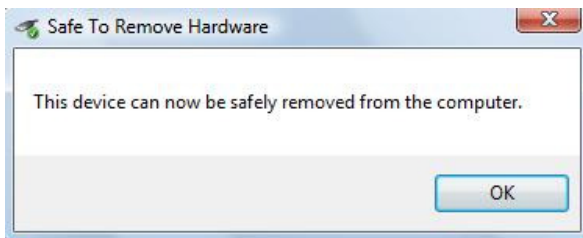
9. The window below will pop up. Please select your device:



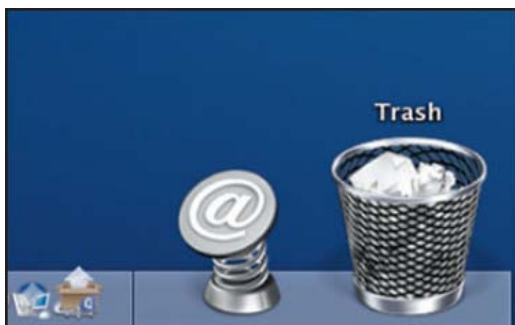
10. Click the “Stop” button and select your device again. Then click the “OK” button to confirm like below:



11. Wait for a few seconds and you will see a window popping up like below:



12. Now you can safely disconnect your player from your computer/laptop.  
13. For Mac OS, please close all programs, files and windows stored or running on the player. Drag the icon of your player into “Trash” like below and then you can un-plug your player from your computer/laptop:

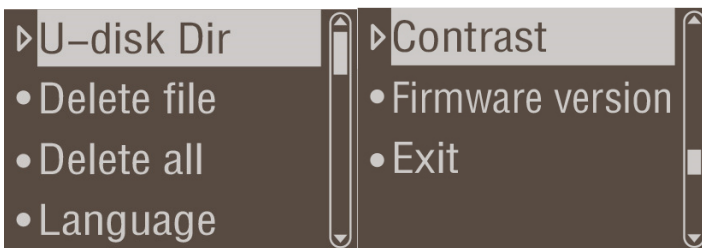


## 6. OPERATING INSTRUCTIONS

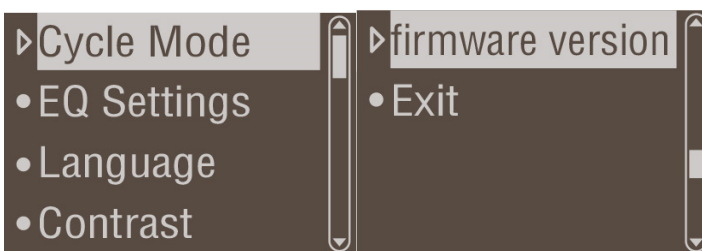
### 6.1 Play the music from your SD card



1. You can save your favorite music in an SD card (not included).
2. Plug the car MP3 Modulator to your car cigarette port and insert the SD card into the SD card slot.
3. The player will start to play the music from your SD card.
4. Turn on the car radio and find a channel without radio broadcast. Press the 'CH+' or the 'CH-' button on the player to adjust the transmission channel to be the same as your car radio.
5. Press the 'PLAY/PAUSE' button to play music and press it again to pause. Your music will be transmitted to your car radio and played out via your car stereo system.
6. In **PLAY status** you can press and hold the 'Pre/VOL-' or 'Forward/VOL+' button on the device to adjust the volume.
7. In **PAUSE status** press and hold the 'CH+' button on the device for 3 seconds to enter the main menu like below:



8. In **PLAY status** press and hold the 'CH+' button on the device for 3 seconds to enter the main menu like below:



9. Please press the 'Pre/VOL-' or 'Forward/VOL+' button on the device to choose different options and press the 'Play/Pause' button to confirm your choice.

**NOTE: The menu will disappear within 3-4 seconds automatically. If you have not finished your operation, please start from point 6.2 again.**

10. Press and hold the 'PLAY/PAUSE' button for a few seconds, and you can switch between the following play modes: Folder All, Folder One, All, Random, Intro, Normal and One.

**NOTE: Please note that the file system on the SD Card needs to be FAT32.**



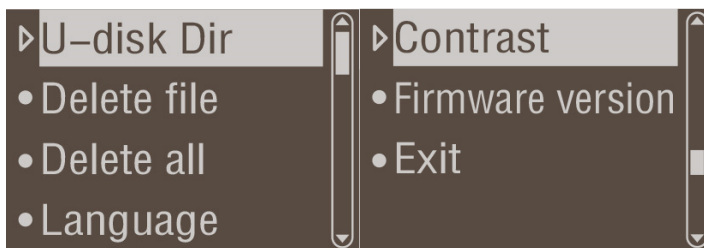
## 6.2 Play the music from a USB stick

**Note: The Car MP3 Player will act like a normal USB port on your computer. Depending on the mobile device you are charging through it – Music playback will only be available on some devices. Apart from smartphones, the Car MP3 Player will be able to both charge and play music from most MP3/MP4 players.**

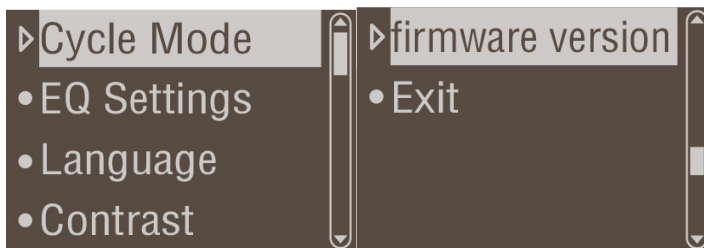
1. You can save your favorite music on to a USB stick (not included).
2. Plug the Car MP3 player to your cars 12V socket, and plug the USB stick into the USB port.
3. The player will start to play the music stored on the USB Stick.

**Note: When the car MP3 Player is on and you plug both the SD card and USB stick to it, the player will play the music on the device which was last plugged in. For example, you have your SD card in the player and then you plug in your USB stick, the player will start to play the music from your USB stick.**

4. Turn on the car radio and find a channel without radio broadcast. Press the 'CH+' or the 'CH-' button on the player to adjust the transmission channel to be the same as your car radio.
5. Press the 'PLAY/PAUSE' button to play music and press it again to pause. Your music will be transmitted to your car radio and played out via your car stereo system.
6. In PLAY status you can press and hold the 'Pre/VOL-' or 'Forward/VOL+' button **on the device** to adjust the volume.
7. In **PAUSE status** press and hold the 'CH+' **button on the device** for 3 seconds to enter the file selection menu like below:



8. In **PLAY status**, press and hold the 'CH+' **button on the device** for 3 seconds to enter the main menu like below:



9. Please press 'Pre/VOL-' or 'Forward/VOL+' **button on the device** to choose different options and press 'Play/Pause' button to confirm your choice.

**NOTE: The menu will disappear within 3-4 seconds automatically. If you have not finished your operation, please start from point 6.3 again.**

10. Press and hold the 'PLAY/PAUSE' button for a few seconds, and you can switch between the following play modes: Folder All, Folder One, All, Random, Intro, Normal and One.

**NOTE: Please note that the file system on the SD Card needs to be FAT32.**

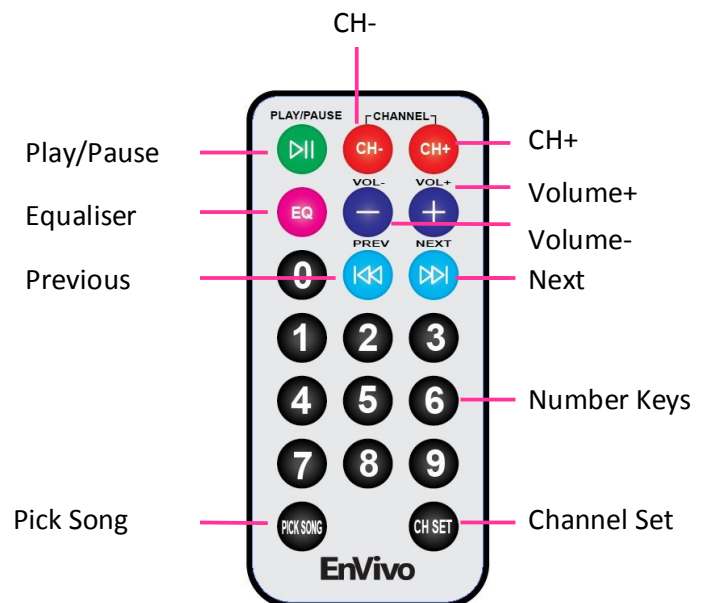
### 6.3 Play the music from an external audio device

1. You can plug external audio devices like MP3 players to the car MP3 player via the enclosed audio cable. The music in the external audio device will have the highest priority to be played once it is plugged in.
2. Turn on the audio device and start to play your favorite music.
3. Plug the car MP3 player to your car cigarette port.
4. The Car MP3 Player will automatically turn on and start to play the music, which is playing via your audio device.
5. Turn on the car radio and find a channel without radio broadcast. Press the 'CH+' or the 'CH-' key to adjust the transmission channel of the car MP3 player to be the same as your car radio.
6. Press the 'PLAY/PAUSE' button on the audio device to play/pause the music. Your music will be transmitted to your car radio and played out via your car stereo system.
7. In **PLAY status** you can only adjust the volume by adjusting the volume of your audio device.
8. Press and hold the 'PLAY/PAUSE' button for a few seconds, and you can switch between the following play modes: Folder All, Folder One, All, Random, Intro, Normal and One.

**NOTE: Please note, that in Intro mode, the Car MP3 Modulator will only play the first 10 seconds of each song.**

## 7. OPERATING BY THE REMOTE CONTROL

1. The buttons of the remote control:



2. Please make sure to take away the plastic battery protection before you start using the remote control.
3. Point the remote control towards the IR receiver point on the player:



4. Press the 'PLAY/PAUSE' button to play music and press it again to pause.
5. Press 'CH+' or 'CH-' to adjust the frequency of the player.
6. Press 'VOL+' or 'VOL-' to adjust the volume.
7. Press 'PRE' or 'NEXT' to choose the **previous** or next song.
8. Press a number key to choose a song in the current folder (eg. Song number 2: Press "0002" then press 'PICK SONG').
9. Press the 'EQ' button to shift among different EQ modes.
10. Press a number key to choose an broadcasting channel eg. 88.6: Press "0886", then press "CH SET". For 106.2: Press "1062" then "CH SET".

**NOTE: The remote control will not work when you connect external audio devices with the car MP3 player via audio port. But you can still use it to adjust the channel.**

11. If there is no response by pressing the remote control please change the battery like below:



- a · Take out the battery slot
- b · Remove the battery
- c · Insert a new battery with correct polarization (+/-)
- d · Put the battery slot back

## 8. TROUBLE SHOOTING

### Cannot find 'Removable Disk' after connecting **Car MP3 Modulator** to the PC/Laptop

1. Check if the player is connected properly.
2. Check if the SD card is inserted correctly.
3. Plug off the player, restart your computer and plug in the player again.

### The 'Removable Disk' icon suddenly disappeared

1. You may have pressed the 'PLAY/PAUSE' button by mistake.
2. Plug off the player and plug it in again. If the 'Removable Disk' icon does not appear again please restart your computer and plug in the **Car MP3 Modulator**.

### Cannot read or write data to the SD card in the **Car MP3 modulator**

1. Check that the player is properly connected to the PC.
2. Check if the memory of the **SD card** is full.
3. Check the USB cable for damages.

### Can not turn on the **Car MP3 Modulator**

1. Check if the **Car MP3 Modulator** is plugged into the car cigarette port properly.
2. Check if the fuse is burned. If yes, please replace it by the enclosed extra fuse.

### The music from the car stereo system is interfered

1. Check if the channel you choose is broadcasting radio signal. If yes, please change to another channel without radio broadcasting and change the **Car MP3 Modulator** frequency to be the same.

### No response by pressing the remote control

1. Make sure the remote control is pointing at the signal receiver point on **the Car MP3 Modulator**.
2. Change the battery of the remote control.

### No sound after plugging the **Car MP3 Modulator** into the car cigarette port

1. Check if there is music on the SD card/USB stick, **and that they are FAT32 file system**.
2. Check if you have plug in the audio cable but without any audio device on the other side. If yes, please remove the audio cable from the **Car MP3 Modulator**.

### When I plug in my smart phone "Wait..." is continuously displayed

1. Depending on the mobile device you are charging through it – Music playback will only be available on some devices. Apart from smartphones, the **Car MP3 Modulator** will be able to both charge and play music from most MP3/MP4 players.

## 9. SPECIFICATIONS

Chipset	ATJ2009
Display	1.44 inch LCD screen
Support Card	SD Card, USB Stick
Operating Languages	Dutch, English, French, Germany, Italian, Portuguese, Spanish, Swedish, Danish, Czech, Polish, Russian, Chinese, Japanese, Korean etc.
Interface	USB 2.0
Support Format	MP3, WMA
FM Frequency	87.5MHz ~108MHz
Power Input	12V/24V DC
USB Charging amps	1 Amp
Bit Rate	32Kbps – 256Kbps
Transmission Distance	3 ~ 5 M
SNR	30 db
Operating System	Windows 2000/XP/Vista/7/8, Mac OS 10 & above, Linux 2.4.2 & above

## 10. VERWIJDERING



Elektrische en elektronische apparatuur (EEE) bevat materialen, delen en inhoud die gevaarlijk kunnen zijn voor het milieu en schadelijk voor de menselijke gezondheid als afval bestaande uit elektrische en elektronische apparatuur (WEEE) niet correct wordt weggegooid.

Apparaten die gemarkeerd zijn met het WEEE logo (te zien links), zouden niet met het huishoudafval weggegooid moeten worden. Neem contact op met uw lokale autoriteit op het gebied van afvalverwerking, aangezien zij in staat zullen zijn om u details te geven over de mogelijkheden voor recycling in uw omgeving.