

FANTEC DB-ALU3

3.5" Aluminium enclosure

USER MANUAL



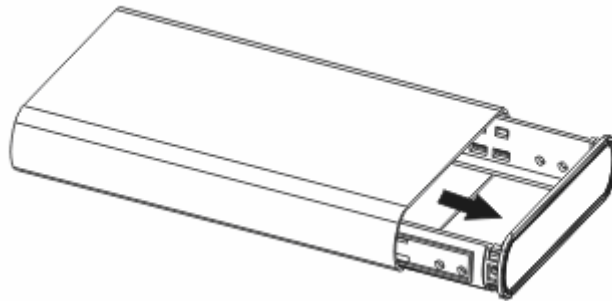
ATTENTION

New HDD Must Be
Formatted Before Use

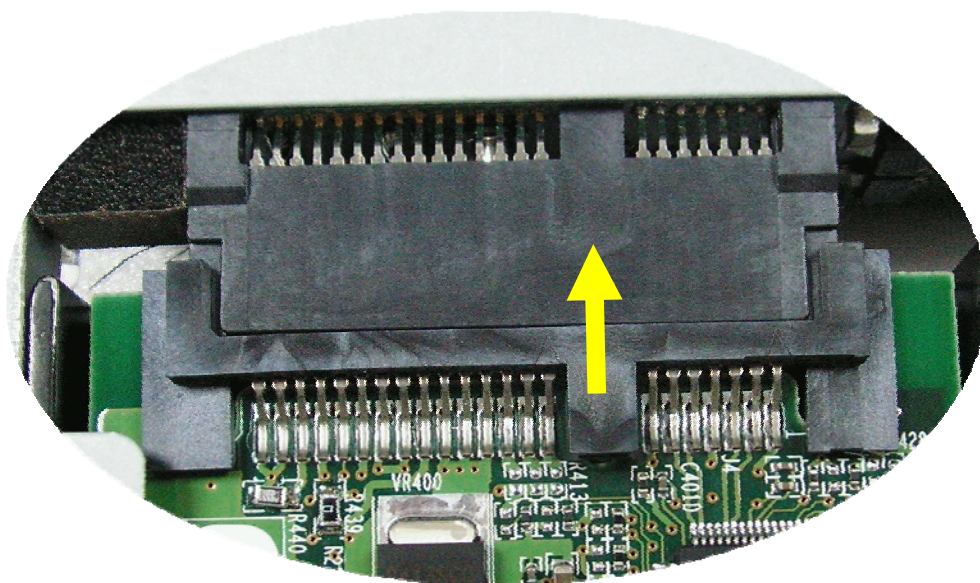
Package contents: FANTEC DB-ALU3, USB Cable 3.0, Manual, Stand, Screws, Power Adapter, HDD fixing Pad, Rubber feet

Hardware Installation Guide

STEP1: Open the enclosure. You will see the internal structure of the enclosure.



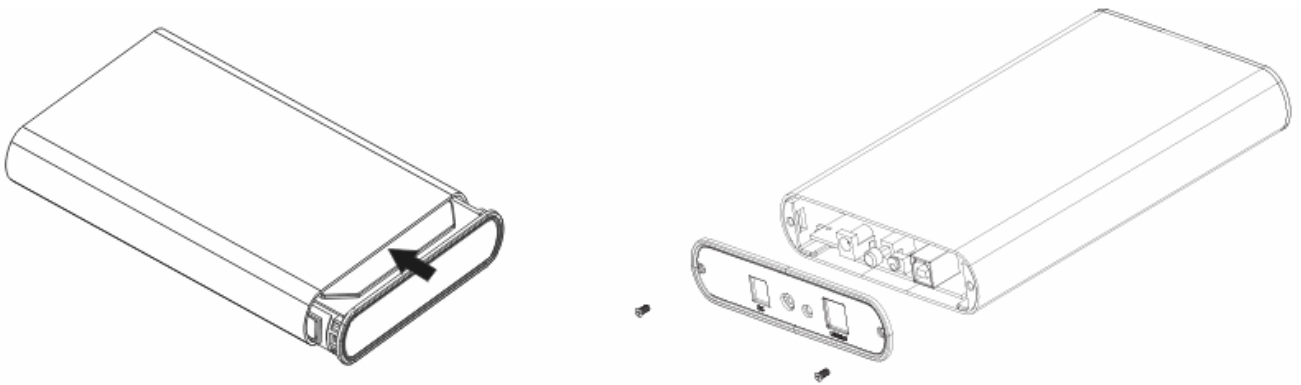
STEP2: Push the HDD towards the electronic board and make sure the SATA connector is well connected.



STEP3: Screw the HDD on the tray tightly or use the HDD fixing Pad.



STEP4: Close the enclosure and screw the rear cover back.



The assembling process is accomplished.

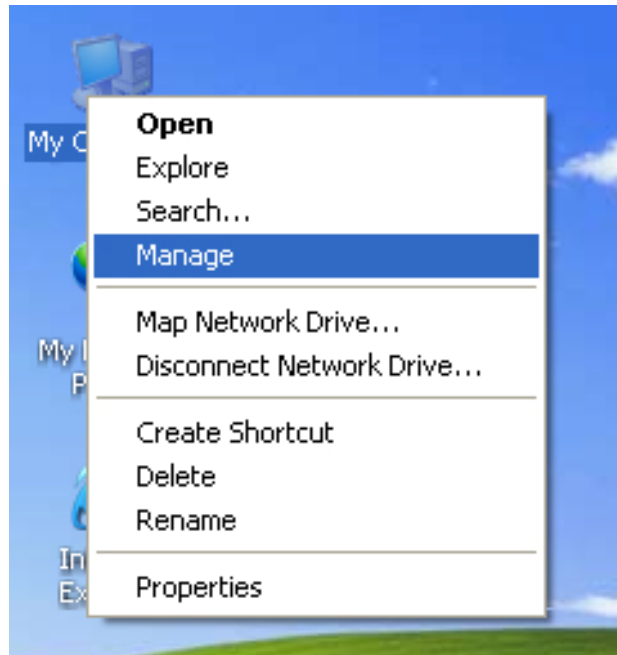


You can use the stand for vertical positioning. If you want to use the device horizontally, please mount the enclosed rubber feet at the bottom of the case.

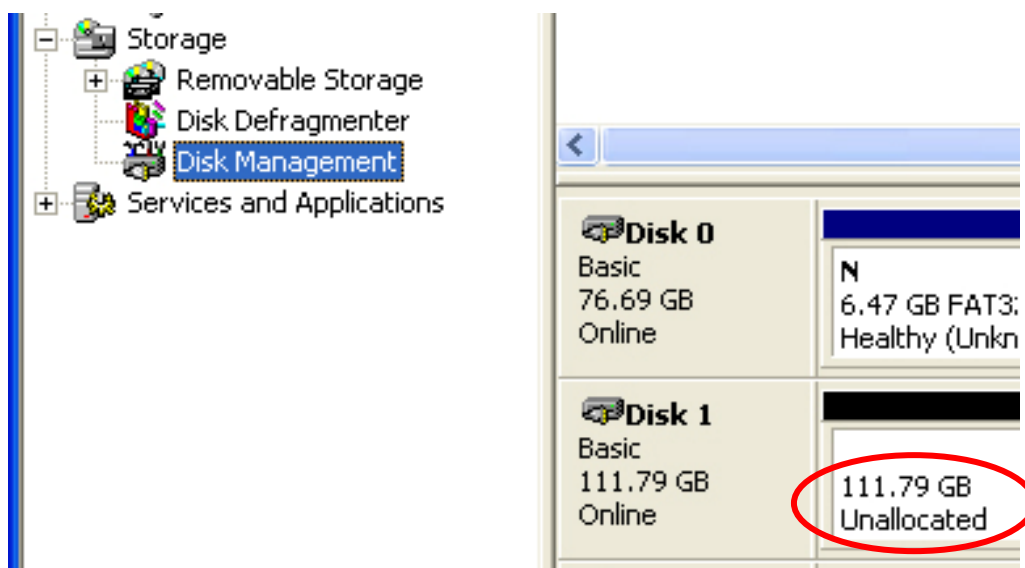
HDD Formatting Guide

- New hard disks have to be formatted, before you can use them.
- Connect the FANTEC DB-ALU3 via USB 3.0 to your PC's with USB 3.0, USB 2.0 or USB 1.1 interface.
- Then turn the power on.

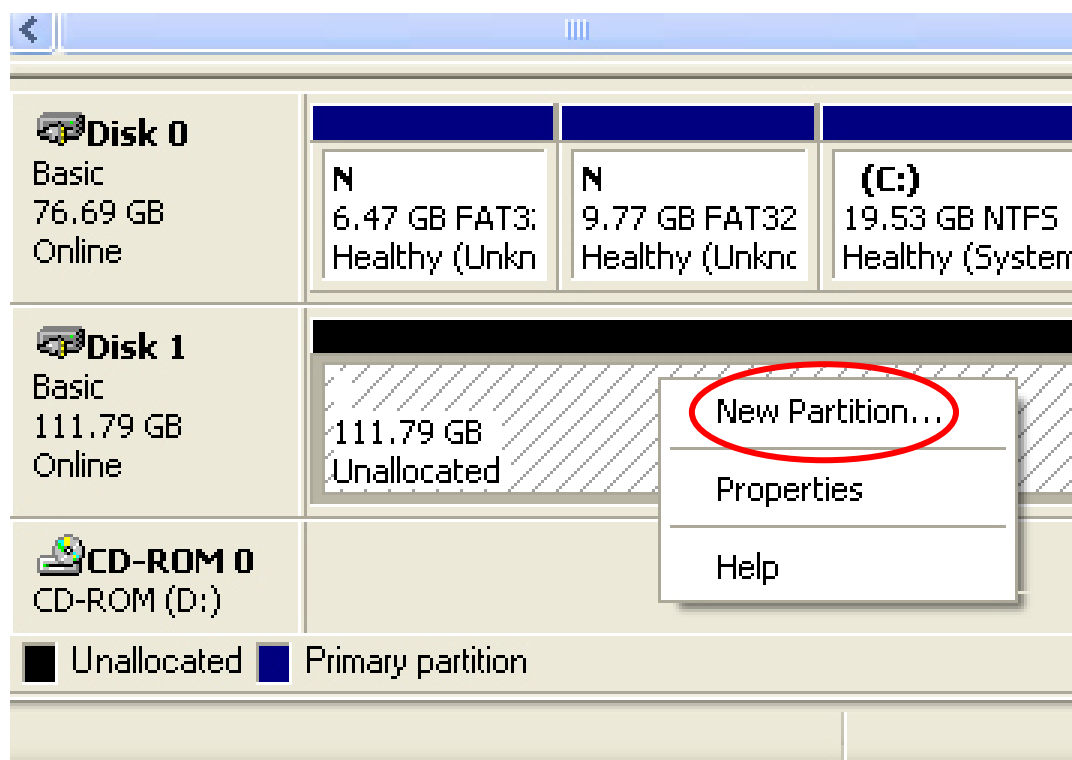
STEP1: Right-click on "My Computer" icon and select the "Manage" column.



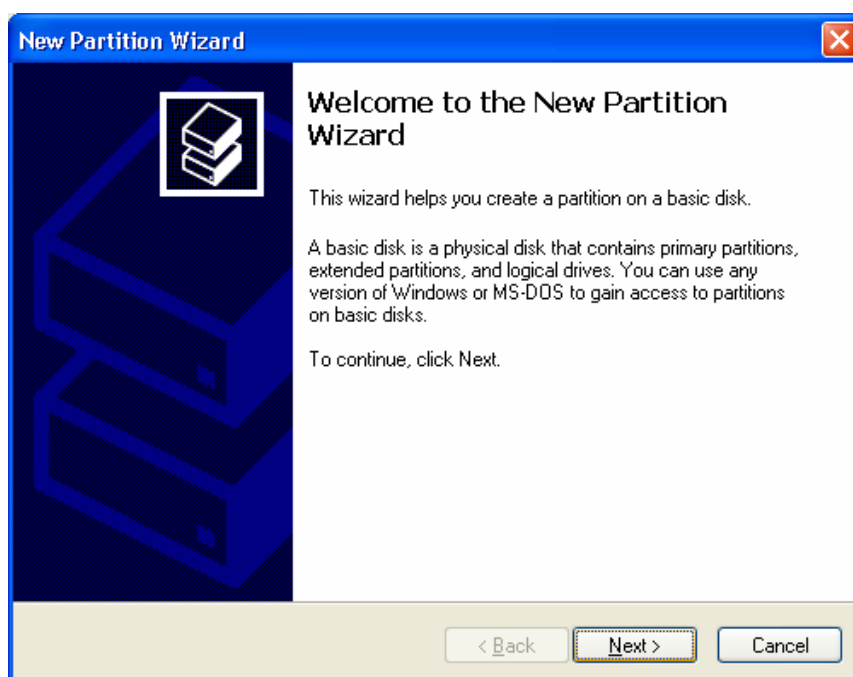
STEP2: Select "Disk Management" and you will see your External HDD showed "Unallocated".



STEP3: Right-click on the “Unallocated” block and select “New Partition”.

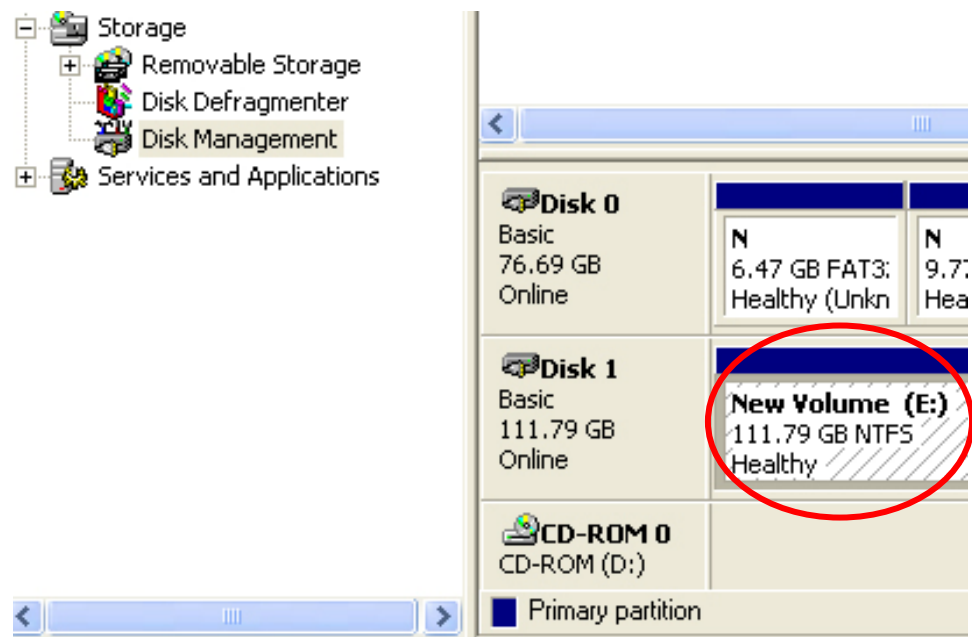


STEP4: The “New Partition Wizard” will appear. Please follow the instruction of the wizard to complete.



STEP5: When partitioning is completed, the external HDD will be

recognized as a “New Volume”.



STEP6: Double-click “My Computer”. You will see the new volume appears on your PC.

