

Precautions

- Read all of these instructions and save them for later use.
- Follow all warnings and instructions on the product.
- Product
 - Do not cover or block the vent holes in the case.
 - Do not insert sharp objects or spill liquid into the LCD monitor through cabinet slots. They may cause accident fire, electric shock or failure.
 - Disconnect the power plug from the AC outlet if you will not use it for an indefinite period of time.
 - Do not attempt to service this product yourself, as opening or removing covers may expose you to dangerous voltage points or other risks.
 - Do not touch the screen directly with your fingers. You may damage the screen, and oil from your skin is difficult to remove.
 - Do not apply pressure to the screen. The LCD is very delicate.
- Power adapter
 - Use the type of power adapter, which supplies from manufacturer for safety and electronic issue.
- Plugs
 - Do not remove any of the prongs of the monitor's three-pronged power plug.
 - Disconnect the power plug from the AC outlet under following conditions:
 - ◆ If you will not use it for an indefinite period time.
 - ◆ When the power cord or plug is damaged or frayed.
 - ◆ If the product does not operate normally when the operating instructions are followed. Adjust only those controls that are covered by the operating instructions. Improper adjustment of other controls may result in damage and will often require extensive work by a qualified technician to restore the product to normal operation.
 - ◆ If the product has been dropped or the cabinet has been damaged.
 - ◆ If the product exhibits a distinct change in performance, indicating a need for service.
- Power and extension cords
 - Do not allow anything to rest on the power cord.
 - Do not locate this product where persons will walk on the cord.
 - Use the proper power cord with correct attachment plug type. If the power source is 120 V AC, use a power cord that has UL and C-UL approvals. If the power source is a 240 V AC supply, use the tandem (T blade) type attachment plug with ground conductor power cord that meets the respective European country's safety regulations, such as VDE for Germany.
 - Do not overload wall outlets or power cords. Ensure that the total of all units plugged into the wall outlet does not exceed 10 amperes.

- Ensure that the total ampere ratings on all units plugged into the extension cord is not above the cord's rating.
- If the power supply cord, which came with your monitor, is to be connected to the PC instead of the wall outlet, this equipment is to be used with UL/TÜV approved computers with receptacle rated 240V AC, 4.0A (minimum).
- Environment
 - Place the monitor on a flat and leveled surface.
 - Place the monitor in a well-ventilated place.
 - Keep the monitor away from: overly hot, cold or humid places, places directly under sunlight, dusty surroundings, equipment that generate strong magnetic fields.

Federal Communication Commission Radio Frequency International Statement

This equipment has been tested and found to comply with the limits for a Class B digital device, pursuant to Part 15 of the FCC Rules. These limits are designed to provide reasonable protection against harmful interference in a residential installation. This equipment generates, uses and can radiate radio frequency energy and, if not installed and used in accordance with the instructions, may cause harmful interference to radio communications. However, there is no guarantee that interference will not occur in a particular installation. If this equipment does cause harmful interference to radio or television reception, which can be determined by turning the equipment off and on, the user is encouraged to try to correct the interference by one or more the following measures:

- Reorient / Relocate the receiving antenna.
- Increase the separation between the equipment and receiver.
- Connect the equipment into an outlet on a circuit different from that to which the receiver is connected.
- Consult the dealer or an experienced radio/TV technician for help.

This device complies with Part 15 of the FCC Rules. Operation is subject to the following two conditions:

- (1) This device may cause harmful interference.
- (2) This device must accept any interference received, including interference that may cause undesired operation.

Notice:

The use of non-shielded interface with this equipment is prohibited.

If necessary, the user should consult the dealer or an experienced radio / television technician for additional suggestions. The user may find the following booklet prepared by the Federal Communications Commission helpful. This booklet is available from the U.S. Government Printing Office Washington DC, 20402, Stock No. 004-000-00345-4.

The manufacture is not responsible for any radio or TV interference caused by unauthorized modification of this equipment. It is the responsibility of the user to correct such interference.

Caution: To meet FCC limits for a Class B computing device, a shielded signal cable should be used.

**Canadian Department Of Communications
Compliance Statement**

This equipment does not exceed Class B limits per radio noise emissions for a digital apparatus, set out in the Radio Interference Regulation of the Canadian Department of Communications. Operation in a residential area may cause unacceptable interference to radio and TV reception requiring the owner or operator to take whatever steps necessary to correct the interference.

Product Description

Congratulations on your purchasing this new generation of monitor. Your LCD monitor incorporates high quality display into a small light weighted module. It has power-saving capabilities and emits no X-ray radiation. You will certainly benefit from this monitor in lots of ways to name some of them, comfort, safety, health, and environmental protection.

This LCD monitor incorporates 10.4" color active matrix thin-film-transistor (TFT) liquid crystal display to provide superior display performance. A maximum resolution of SVGA 800x600 is ideal for displaying graphics and images. Other outstanding designs that enhance this LCD monitor's performance are Plug & Play compatibility, and OSD (On Screen Display) controls.

Package Contents

Included with your LCD monitor are following items:

- 10.4" TFT liquid crystal monitor
- D-sub 15 pin signal cable
- Power Adapter
- Power cord
- User's manual
- Audio cable (optional)
- Video signal cable (optional)
- RS232 cable for touch screen (optional)

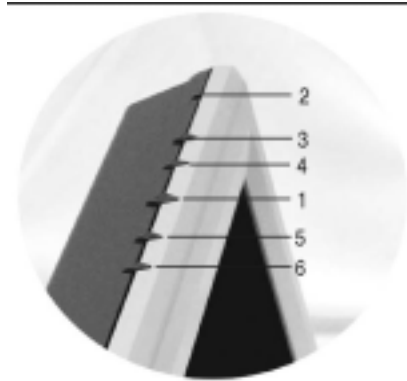
Product Features

- High contrast color TFT LCD display support resolution up to SVGA 800x600. Compatible with IBM VGA and VESA.
- Power management system conforms to VESA DPMS standard.
- Universal power adapter.
- Support DDC1/2B for Plug & Play compatibility.
- Advanced OSD control for picture quality adjustment.
- Detachable stand for wall-mounting application.
- Optional imbedded audio system.
- Optional video-in function.
- Optional touch screen function.

Cleaning

- Gently wipe the screen with a clean camel hair lens brush, or a soft, clean, lint-free cloth. This removes dust and other particles that can scratch the screen.
- Do not apply pressure to the screen surface when wiping it clean.
- Do not pour or spray any liquid directly onto the screen or case of the LCD monitor. Chemical cleaners have been reported to damage the screen or case of the LCD monitor.

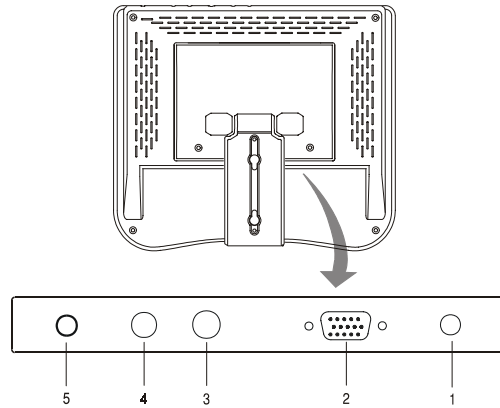
Taking a Look Front View



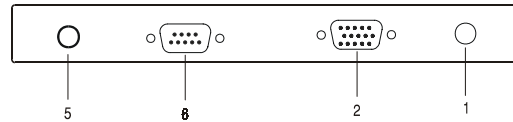
1. **Power Switch** Pressing this button turns the display system power **on** or **off**.
2. **Power LED** This LED indicates different status when this unit operates in different modes.
3. **Menu/Select** Pressing this button pops up the OSD menus on the screen, and used to select (“Up” direction) the OSD control options on the screen.
4. **Menu/Select** Pressing this button pops up the OSD menus on the screen, and used to select (“Down” direction) the OSD control options on the screen.
5. **+** This button is used to increase the value of the selected OSD control option.
6. **-** (1) This button is used to adjust the decreasing value of the selected OSD control option. (2) used to select input sources (VGA or Video signal) when the OSD “main menu” function is off (for model with video-in function only).

Rear View

Analog / Video-in Model:



Touch Screen Model:

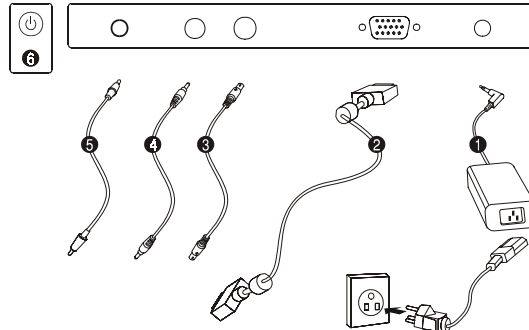


1. **Power Connector** This is for connecting the power adapter.
2. **Signal Connector** This can be connected with the D-sub 15 pin signal connector.
3. **Video In (S)** This can be connected with the video-in **S** connector. (option)
4. **Video In (RCA)** This can be connected with the video-in **RCA** connector. (option)
5. **Audio In** This can be connected to the audio-out connector of the computer. (option)
6. **Touch** This is for connecting the touch panel RS232 connector. (option)

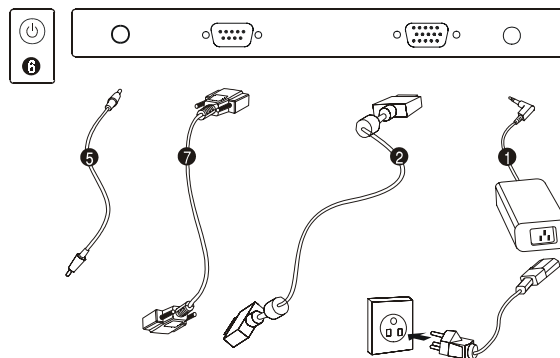
Setting Up

WARNING When you disconnect the cord/cables, be sure to hold the connector instead of the wire part.

Analog / Video-in Model:



Touch Screen Model:



1. Connect one end of the **power adapter** to the monitor and the other end to the connector of the power cord. (❶)
2. Connect one end of the **signal cable** to the rear side of computer and the other to the LCD monitor. Tighten by turning clockwise the two thumb screws to ensure proper grounding. (❷)
3. Connect either end of the **video-in (S) cable** to the connector on the monitor and the other end to the video-out connector of your accessory. (❸) (optional module)
4. Connect either end of the **video-in (RCA) cable** to the connector on the monitor and the other end to the video-out connector of your accessory. (❹) (optional module)
5. Connect either end of the audio cable to the **audio in** connector on the monitor and the other end to the audio-out connector of your computer. (❺) (optional module)
6. Pressing the **power button** on front panel turns the display system power on. (❻)
7. Connect one end of the **touch (RS232) cable** to the rear side of computer and the other to the LCD monitor. Tighten by turning clockwise the two thumb screws to ensure proper grounding. (❼) (optional module)

Controls and Adjustment

Adjusting with the OSD Control



- **To Display and Select the OSD Functions:**
Pressing or once pops up the OSD function main menu, and then pressing or a second time to select the different OSD control option.
- **To Adjust the Value of the Control Option:**
Pressing / button changes the value of the selected OSD control option.
After adjusting values, the monitor will automatically save the changes.
- **To select input sources (for model with video-in function):**
Pressing to select input sources when the OSD “main menu” function is off.

NOTE The OSD screen will disappear if no input activities are detected for 10 seconds.

OSD Control Options



OSD Main Menu



OSD Main Menu (video-in function)

- **VOLUME**
Adjust the speaker volume using + and – buttons.
- **BRIGHTNESS**
Adjust the brightness using + and – buttons.
- **CONTRAST**
Adjust the contrast using + and – buttons.
- **SATURATION (for model with video-in function only)**
Adjust the video image color saturation using + and - buttons.

- **HUE** (*for model with video-in function only*)
Adjust the video image hue using + or - buttons.

- **COLOR**

Adjust the values of color gain (RED, GREEN or BLUE) using + and – buttons.

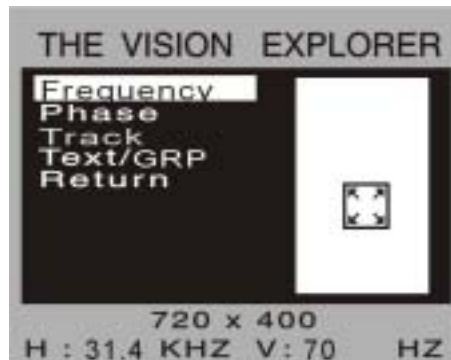


OSD Menu - Color

- **AUTOTUNE**

Press + buttons to make LCD monitor adjust the related parameters automatically for optimal display status.

- **QUALITY**



OSD Menu - Quality

- **FREQUENCY**

This item is used to decrease the vertical interference.

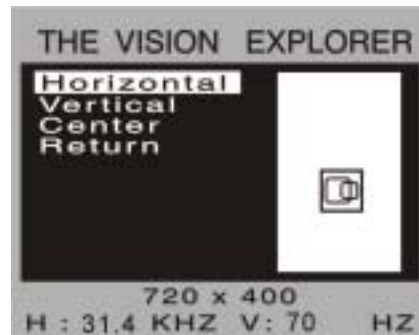
1. Select one display pattern from your computer.
2. Use + and – buttons on the LCD monitor to decrease the vertical interference to get the optimal display.

- **PHASE**

This item is used to decrease the horizontal interference.

1. Select one display pattern from your computer.
2. Use + and – buttons on the LCD monitor to decrease the horizontal interference to get the optimal display.

- **TRACK**
Adjust the track using + and – buttons.
- **TEXT / GRP**
Select “Text” or “Graphics” display in special mode.
- **POSITION**



OSD Menu – Position

- **HORIZONTAL**
Pressing + moves the display image to the right; Pressing – moves the display image to the left.
- **VERTICAL**
Pressing + moves the display image upward; Pressing – moves the display image downward.
- **CENTER**
Pressing + or – buttons to automatically centers and sizes the screen image.
- **LANGUAGE**
This item is used to select OSD languages: English, Chinese, and Japanese.
- **RECALL**
Pressing + or – buttons to recall factory preset values.
- **SAVE**
Pressing + or – buttons to save previous preset values.

Power LED Display & Power Saving

General Power Saving Mode

When the power switch are switch **on**, this LED lights in **green**.

The LED indicates the different power status with altered LED colors when monitor operates in different modes (see following table).

Mode	Power LED Color	Power Consumption	H. / V. Sync.
On	Green	16W	+ / +
Standby	Orange	< 7W	- / +
Suspend	Orange	< 7W	+ / -
Off	Orange	< 7W	- / -

We recommend to switch off the monitor when it is not use for quite a long time.

Troubleshooting

The monitor does not respond after you turn on the system.

- Check if the **Power Switch** of monitor is turned **on**.
- Turn off the power and check the monitor's power cord and signal cable for proper connection.

The characters on the screen are dim.

- Refer to the *Controls and Adjustments* section to adjust the brightness.

The screen is blank.

- During operation, the monitor screen may automatically turn off as a result of Power Saving feature. Press any key to see if the screen comes back.
- Refer to the *Controls and Adjustments* section to adjust the brightness.

The screen flashes when it's initialized.

- Turn off the monitor and turn it on again.

Display Modes

Item	Resolution	Type	H. Scan (KHz)	V. Scan (Hz)	Pol.
1	640X350		31.469	70.087	+ / -
2	720X400		31.469	70.087	
3	640X480	VESA	31.469	59.940	- / -
4	640X480	VESA	37.861	72.809	- / -
5	640X480	VESA	37.500	75.000	- / -
6	640X480	VESA	43.269	85.008	- / -
7	800X600	VESA	35.156	56.250	+ / +
8	800X600	VESA	37.879	60.317	+ / +
9	800X600	VESA	48.077	72.188	+ / +
10	800X600	VESA	46.875	75.000	+ / +
11	800X600	VESA	53.674	85.061	+ / +

Specifications

<i>LCD Display</i>	10.4" TFT Active Matrix Panel	
<i>Display Size</i>	211.2 (H) x 158.4 (V) mm	
<i>Pixel Pitch</i>	0.264 (H) x 0.264 (V) mm	
<i>Display Mode</i>	VGA 640 x 350 (70Hz)	
	VGA 720 x 400 (70 Hz)	
	VGA 640 x 480 (60 / 72 / 75 / 85Hz)	
	SVGA 800 x 600 (56 / 60 / 72 / 75 / 85Hz)	
<i>Max. Resolution</i>	SVGA 800 x 600	
<i>Display Color</i>	262K	
<i>Contrast Ratio</i>	400:1	
<i>Brightness</i>	220 Cd/m ²	
<i>Response Time</i>	45 ms	
<i>Viewing Angle</i>	110° (H) x 80° (V)	
<i>Input Signal</i>	<i>Video</i>	R.G.B. Analog 0.7V _{peak to peak}
	<i>Sync</i>	TTL Positive or Negative
<i>Signal Connector</i>	15 Pin D-Sub	
<i>Front Control</i>	Power on / off with LED, Menu / Select (up, down), Adjustment (+, -)	
<i>OSD</i>	Volume, Brightness, Contrast, Color -RGB, AutoTune,	
	H-Position, V-Position, Center, Frequency, Phase, Track,	
	Text/Graphics, Language, Recall, Save, Saturation, Hue	
<i>Plug & Play</i>	DDC1 / 2B	
<i>Audio System (option)</i>	0.7W / Per channel	
<i>Touch Panel (option)</i>	Resistive or Capacitive Type with RS232 connector	
<i>Video-in (option)</i>	S and RCA connectors	
<i>Power Adapter</i>	Input AC 100-240V, 50-60Hz, Output DC 12V/2.0A (min.)	

Operating Conditions	Temperature	5°C ~ 35°C (41°F ~ 95°F)
	Humidity	20% ~ 80% (No Condensation)
	Altitude	To 10,000 Feet
Storage Conditions	Temperature	-20°C ~ 60°C (-4°F ~ 140°F)
	Humidity	10% ~ 90% (No Condensation)
Dimensions (HxWxD)		242 x 278 x 70mm
Weight (Net)		1.64Kg
Certifications		UL, C-UL, FCC-B, CE

- *Specifications are subject to change without notice.*

WARNING Do not disassemble the monitor. Contact your dealer if needed.
