

4s³™

Variable Temperature Thermal Sealer



4s3 VARIABLE TEMPERATURE THERMAL SEALER USER MANUAL

All rights reserved.

No part of this publication may be reproduced, transmitted, transcribed, stored in a retrieval system, or translated into any language, or computer language, in any form, or by any means, electronic, mechanical, magnetic, optical, chemical, or other, without the prior written permission of the manufacturer.

The manufacturer reserves the right to revise this publication and to make changes from time to time in the contents hereof without obligation to notify any person of such revision or changes.

Unless otherwise specified, references to names or parts are purely casual and are used to illustrate the product described.

The document is for information only.

The manufacturer accepts no liability for errors contained herein or for incidental or consequential damages with the performance or use of this material.

System Components

The following components are part of the 4s3 System (product code 4ti-0655):

- 4ti-0655 - 4s3 Heat Sealer
- Power Cable
- Manual & Quick User Guide
- 4ti-0615 - Plate Carrier
- 4ti-0602 - Weighted Platen

Replacement accessories and optional extras are to be ordered separately.

- 4ti-0625 - Plate carrier for 96well PCR Plates (optional extra)
- 4ti-0612 - Sealing Frame (supplied FOC with 4ti-0625)
- 4ti-0616 – Roche 1536 Plate Adapter (optional extra)

PAGE INDEX

	Page #
1 INTRODUCTION	6
1.1 Introduction	6
1.2 Chapter Index	6
1.3 Safety	7
1.4 Applicable Rules	8
1.5 Technical Specifications	10
2 GENERAL SPECIFICATION	12
2.1 Sealer Parts	12
2.1.1 Control Panel	14
2.1.2 Rear Power Interface	14
3 INSTALLATION	15
3.1 Unpacking and start-up	15
3.2 Voltage Check	16
4 SET-UP	18
4.1 Set-Up Operating Mode	18
4.2 Stand-By, Power-Down and Audible Warning Control	19
5 BASIC FUNCTIONS	20
5.1 “Run” Mode	20
5.2 “Stand-by” Mode	23
5.3 “Power-down” Mode	24
5.4 Closing Drawer	24
6 TROUBLESHOOTING	25
6.1 Introduction	25
6.2 Error Messages	25
6.3 Cleaning the Heating Platen	27

7	MAINTENANCE	28
	7.1 Regular Maintenance	28
8	ACCESSORIES AND CONSUMABLES	29
	8.1 Plate Types	29
	8.2 Thermal Sealing Plastic and Sealing Film Types	29
	8.3 Plate Carriers and Accessories	30
9	SEALING PARAMETERS	31
10	SHIPPING INSTRUCTIONS	32
11	WARRANTY	33
	APPENDIX 1	
	4titude [®] Consumables – Heat Seals	34
	4titude [®] Consumables – FrameStar [®] PCR Plates	36
	4titude [®] Consumables – General PCR Plates	38
	4titude [®] Consumables – Storage Plates	39
	4titude [®] Consumables – Vision Plate™ Screening Plates	39
	4titude [®] Consumables – Assay Plates	40

1.1 Introduction

The variable temperature thermal Sealer 4s3 is a semi-automatic instrument designed to seal sample plates made from various polymers.

The sealer can be used with most plate types and sealing films available. Both temperature and time are variable and can be optimised to suit each sealing plate and film.

When the 4s3 is ready to start the operator needs to position the sample plate together with a foil or film on the plate carrier. The sealing operation starts once the operator presses "OPERATE". Film and sample plate will then automatically be brought in contact with the heating platen.

As soon as the sample plate is in contact with the heating platen a countdown timer starts and after the chosen sealing time the motor automatically moves the sample plate away from the heating platen and the operator can remove the sealed sample plate for further processing.

1.2 Chapter Index

To use the 4s3 correctly and to obtain the best results, please read this manual carefully.

Chapter 1	Introduction, Warnings and Technical Specifications
Chapter 2	General Description
Chapter 3	Installation
Chapter 4	Set-Up
Chapter 5	Basic functions
Chapter 6	Troubleshooting
Chapter 7	Maintenance
Chapter 8	Accessories & Consumables

1.3 Safety

Before using the sealer please read the following safety notes.

This product must only be used in accordance with proper safety standards and procedures, together with the instructions included in this manual.

The sealer has been designed and manufactured to conform to international safety specifications.

It's essential that the users know the potential hazards associated with the equipment.

All operators should know and observe the safety precautions and warnings given in this section before starting to use the instrument.

If the unit is used in a way not specified by the manufacturer, the protection provided by the equipment may be ineffective.

The following caution and safety signs are used in this manual:



WARNING: Refer to manual

The machine is designed for indoor laboratory use only, at an altitude of less than 2200m above sea level, within a temperature range of 15°C to 35°C and a relative humidity range of 5% to 85% non-condensing.

If the instrument is stored outside these ranges, it should be left to stand until it equilibrates to within the above limits.

Ensure that the voltage selection switch is set to the correct voltage and that the correct fuse for the required voltage setting is fitted.

Do not work outside the rated power supply range.

Use the cleaning method recommended by the manufacturer.

Ensure the unit is only connected to an earthed supply.

There are no user accessible or serviceable parts inside the unit. Do not remove the unit's cabinet.



WARNING: Hot surface

The hot plate can reach temperature up to 200°C, Care must be taken not to touch it or serious burns may occur. The equipment will maintain a high temperature for a considerable time after switching off and it is essential to wait before starting cleaning operations. Sealed sample plates may remain hot for some seconds after sealing and should be handled with care.



WARNING: Risk of electrical shock (high voltage)

This equipment should only be dismantled by properly trained personnel, removing the top case exposes potentially lethal mains voltages.

1.4 Applicable Rules

2006/95/CE	Low Voltage Directive
2004/108/CE	Electromagnetic Compatibility Directive
2002/96/CE	amended 2003/108/CE WEEE Directive

1.5 Technical Specifications

MECHANICAL

Dimensions

Height	310 mm
Depth	275 mm
Width	181 mm
Weight	10 kg

ELECTRICAL

Voltage	230/115/100 \pm 10% Vac
Frequency	47/63 Hz
Power	300 W

ENVIRONMENTAL

Temperature range	Operative: 18°C to 35°C
Storage	-20°C to 40°C
Relative humidity	20% to 80% not condensing

CONNECTION

Serial port	RS-232
-------------	--------

SOFTWARE

Version	1.02
---------	------

SET UP PARAMETERS

Sealing temperature

Range	OFF or from 120°C to 200°C
Step	1°C
Default	OFF

Sealing time

Range	0 to 10 seconds
Step 0-1 second	0.1 second
Step 1-10 seconds	0.5 second
Default	3 seconds

Stand by cycle

Range	“no” stand-by or from 1 to 99 mins
Step	1 minute
Default	60 minutes
Stand by temperature:	60°C, not programmable

Power down time

Range	1 to 24 hours
Step	1 hour
Default	10 hours
Power down temperature:	Ambient

Audible Warning

Options	ON/OFF
Default	ON

2 GENERAL SPECIFICATION

2.1 Sealer Parts



Figure 1 Casing and Control Panel



Figure 2 - Rear Power Interface



Figure 3 - Heating Platen



Figure 4 - Plate Carrier



Figure 5 - 96well PCR Plate Adapter 4ti-0625 (optional)



Figure 6 - Standard Plate Adapter 4ti-0615

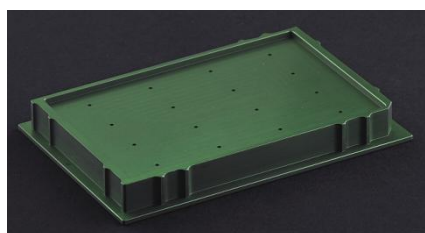


Figure 7 - Roche 1536 Plate Adapter 4ti-0616



Figure 8 - Weighted Platen 4ti-0602



Figure 9 - Sealing Frame 4ti-0612 (optional)

2.1.1 Control Panel

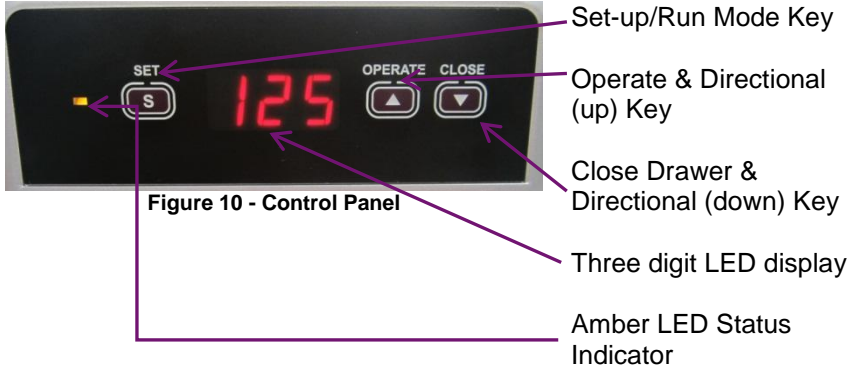


Figure 10 - Control Panel

2.1.2 Rear Power Interface

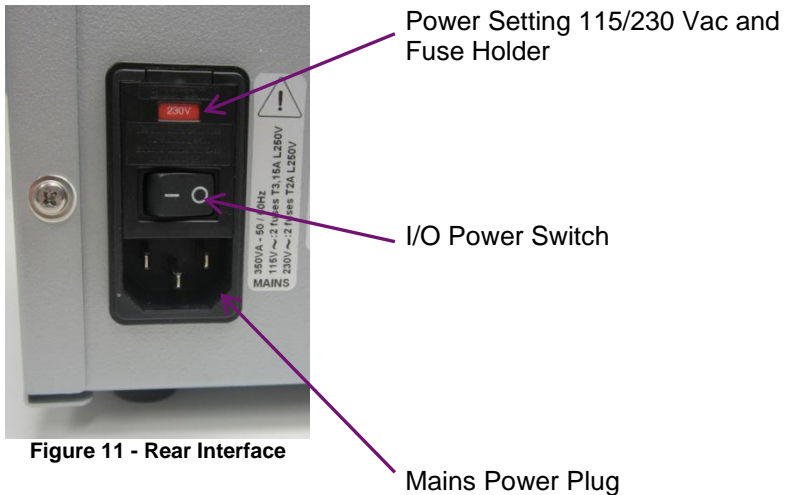


Figure 11 - Rear Interface

3 INSTALLATION

3.1 Unpacking and Start-Up

After unpacking retain all packing material and fixtures, as the unit must always be transported in its original packaging to avoid damage.

The manufacturer accepts no responsibility for damage incurred unless the unit is correctly packed and transported in this way.

Remove the 4s3 unit from its packaging. Open the sealing drawer and remove the protective elastic bands. Once powered up, the drawer will close automatically.

The unit has to be placed on a level surface, away from direct sunlight ensuring access to the power switch at the back of the unit.

Ensure that the vents on the casing are not obstructed.

The mains voltage selector switch should be checked to ensure that the voltage has been set at the correct value.

Connect the unit to the mains power supply and switch on the switch I/O of the rear power interface.

If the heater within the unit is receiving power the amber LED on the control panel will be illuminated.

After switching on wait until the amber LED light stops flashing (the set temperature is reached and the unit is ready to seal).

3.2 Voltage Check



Be sure that the equipment is not connected to the mains power.

At the rear of the 4s3 is the connection panel with:

- Power setting 115/230 Vac and Fuse Holder
- I/O Power Switch
- Mains Power Plug

The set voltage is displayed in white on red background on the power setting and fuse holder – see “Figure 11”, page 14.



Figure 12 - Opening fuse holder compartment



Figure 13 - Levering out fuse holder

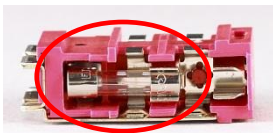


Figure 14 - Correct fuse location

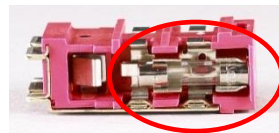


Figure 15 - Incorrect fuse location

Changing the Voltage Setting

1. Open fuse holder compartment with a screwdriver (Figure 12).
2. With the screwdriver lever out the fuse holder (Figure 13).
3. Replace the two fuses according to the table below:

Power Voltage	(EN 60127)
115V	3.15A (T)
230V	2A (T)

Table 1 - Fuse ratings for 4s3

4. Insert the fuse holder keeping the set voltage label at the top.
5. Close the fuse compartment by pressing gently.
6. If the fuse holder is inserted correctly you can read the voltage selected.

4 SET-UP

4.1 Set-Up Operating Mode

Turn on the 4s3 (switch located at back of the unit).

The display will show the software version for a couple of seconds and then show the temperature to which the 4s3 is currently set. The unit is delivered with the heater platen turned off. If this is the first time of switching the unit on, the keypad will display “oFF”. Otherwise, when switched on, the unit will start to heat up to the last set temperature and the LED light will flash whilst it is heating up.

To programme time and temperature settings:

- Briefly press and release the **S** (set) key
- The display shows the last set sealing temperature (flashing)
- The temperature can be decreased or increased using the **U** **D** keys
- Temperature can be set between 120°C and 200°C with steps of 1°C or to “oFF”.
- Press the **S** key again to store the new set temperature and then the display will flash with “t” and the current sealing time (flashing).
- The sealing time can be decreased or increased with the **U** **D** keys
- Time can be set between from 0-1 second in 0.1 second increments and from 1-10 seconds in 0.5 second increments.
- Press the **S** key again to store the new sealing time value and this will also exit from the programme menu.
- The unit returns into “run mode” (see Chapter 5, Basic Functions, page 20) and the actual temperature of the heating platen is shown in the display.

4.2 Stand-by, Power Down and Audible Warning Control

To programme stand-by and power-down time and control the audible warning:

- Press the **[S]** key for 10 seconds, then release.
- The display shows the symbol “L” (flashing) and the last set stand-by time in minutes. (The stand-by time is the time after which the heater temperature is automatically reduced to 60°C when the unit is left idle).
- The stand-by time can be decreased or increased with the **U** **↻** keys
- Time can be set between 1 minute and 99 minutes with steps of 1minute or as “no” standby.
- Press the **[S]** key again to store the new stand-by time and then the display will flash with “P” and the current power-down time (in hours). (The power-down time is the time after which the heater is switched off automatically when the unit is left idle).
- The power-down time can be decreased or increased with the **U** **↻** keys
- Power-down can be set between 1 hour and 24 hours with steps of 1 hour
- Press the **[S]** key again to store the new power-down time and the display will flash with “S” and the current audible warning setting.
- The audible warning function can be enabled (“on”) or disabled (“no”) with the **U** **↻** keys.
- Press the **[S]** key again to store the audible warning function and the display will flash with “r” this **MUST BE** set to “on”, otherwise the drawer will not function correctly. Press the **[S]** key again to save and exit.
- The unit returns into “run mode” (see Chapter 5, Basic Functions, page 20) and the actual temperature of the heating platen is shown in the display.

5 BASIC FUNCTIONS

5.1 “Run” Mode

Switch on the unit. The unit will automatically begin to warm up the heating platen to the last set temperature. The display shows the temperature increase in real time with the amber LED flashing.

When the heating platen reaches the set temperature an audible beep is emitted and the amber LED remains permanently illuminated.

The system is ready for sealing. Push “OPERATE” to open drawer and then the sample plate can be loaded onto the appropriate plate carrier:

Deep-Well Plates

All fully skirted SBS standard plates (except 96well PCR plates) can be loaded onto the standard plate carrier (4ti-0615, Figure 16).

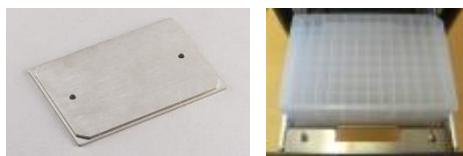


Figure 16 - Use the standard plate carrier (4ti-0615) for deep-well plates

Shallow-Well Plates

However, for easier handling of shallow well plates we recommend to place the standard plate carrier (4ti-0615) inside the adapter for 96well PCR plates (optional extra, code 4ti-0625, Figure 17).



Figure 17 - The standard plate carrier (4ti-0615) can be placed inside the adapter for 96well PCR plates (4ti-0625). This is recommended for skirted shallow well plates, such as 384well PCR plates

96well PCR Plates

All 96well PCR plates should be inserted into the 96well PCR plate adapter (product code 4ti-0625, Figures 18 &19). Note: When using the 96well PCR plate adapter the standard plate carrier should be removed from the drawer.



Figure 18 - Plate adapter for 96well PCR plates (optional, code 4ti-0625)

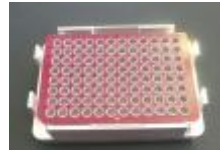


Figure 19 - Plate adapter for 96well PCR plates, shown with non-skirted PCR plate

Roche 1536well Plates

For use with a Roche 1536 plate, insert the Roche 1536well plate adapter (4ti-0616) inside the adapter for 96well PCR plates (optional extra, code 4ti-0625, Figures 20 & 21).



Figure 20 - The Roche 1536 adapter (4ti-0616) should be placed inside the adapter for 96well PCR plates (4ti-0625). This adapter is required for Roche 1536well plates.

Place the sealing film over the plate, ensuring that the sealing surface is face down (Figure 20). When using heat sealing films that have a tendency to curl (for example 4titude Peel Seal (product code 4ti-0521), DMSO Resistant Seal (4ti-0587) and Clear Weld Seal Mark II (4ti-0575)) use the sealing frame which is supplied with the 4ti-0625 adapter. For deep well plates place the weighted platen on top of the sealing film (Figure 21). For most other plates we recommend the use of the sealing frame (Figure 22).



Figure 21 - Position sealing film / foil on plate

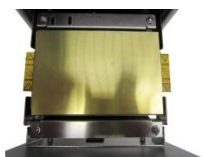


Figure 22 - Position weighted platen over sealing film / foil



Figure 23 - Position sealing frame over sealing film / foil

Press “OPERATE”. The drawer will automatically close and the sealing process will begin automatically.

Once the plate makes contact with the heating platen the display shows the symbol “t” and the countdown of the programmed sealing time starts.

When the countdown timer reaches zero the drawer automatically opens. The sealed plate can now be removed.

The unit emits an audible beep once the heating platen has reached the programmed temperature again and a new cycle can be started.

Note: *Foil backed film may remain hot for a number of seconds after sealing. Care should be taken in handling these plates.*

5.2 “Stand-by” Mode

If left idle for a prolonged time the sealer will automatically switch into stand-by mode (factory set at 60 minutes) and the temperature of the heating plate will be reduced to 60°C.

When entering into stand-by mode the display shows the decrease of the temperature in real time and the amber LED is switched off.

The temperature of the heating platen will be maintained at 60°C.

The display shows the actual temperature of the heating platen and not the set sealing temperature.

By pressing any key the unit will automatically begin to warm up the heating plate to the pre-selected sealing temperature.

Refer to section 4.2 to change the time after which the unit switches into stand-by mode or to switch off the stand-by function.

5.3 “Power-down” Mode

If the unit remains idle in stand-by mode for a prolonged time the system will go into power down mode and the heating platen will be switched off (factory set at 10 hours). The amber LED is switched off.

The display shows the temperature decrease until it reaches 45°C, after this “LO” will be displayed.

By pressing any key the unit will automatically begin to warm up the heating platen to the pre-selected sealing temperature.

Refer to section 4.2 to change the time after which the unit switches into power-down mode.

5.4 Closing Drawer

When the unit is not in use, to prevent damage or dust contamination the drawer can be closed by pressing “CLOSE”.

Note: *Do not close the drawer by hand.*

6 TROUBLESHOOTING

6.1 Introduction

Possible error messages generated by the 4s3 are summarised in this chapter.

If the solutions given below do not solve the problem, please contact 4titude or their authorised local distributor.

6.2 Error Messages

The display may show one of the following error codes. An intermittent audible warning sound will be emitted at the same time.

Display Message	Error
Er1	The system cannot reach the starting position within a defined time
Er2	The lifting platform does not remain in the elevated position
Er3	The motor cannot move the lifting platform towards the heating plate within a defined time
Er4	The motor cannot move the lifting platform to the low position within a defined time
Er5	Motor over current
Er6	Temperature sensor opened or disconnected
Er8	“Platform in low position sensor” active during elevation movement
ErA	Obstruction of the drawer whilst opening
ErB	Obstruction of the drawer whilst closing



The errors will remain displayed until the problem is solved. To clear the error press “CLOSE”.

If any of the above errors persists switch “OFF” the unit and then switch “ON” again.

If within 10 seconds the problem is not solved the heated platen is automatically turned off to avoid sample damage.

If the problem is solved within 10 seconds the unit will automatically return to “Run Mode”.

6.1 Cleaning the Heating Platen

If the sealing film is placed upside down on the plate, the sealing film will become stuck to the heating platen. To clean it, proceed as follows:

Do not attempt to clean the unit until it has cooled down to near room temperature

- Set temperature to “OFF” (refer to page 18 for instructions)
- Allow unit to cool until heating platen is close to ambient
- If drawer is not open, press “OPERATE” to open
- Switch unit off at back
- Disconnect from mains supply
- To allow better access to heating platen, lay the unit **gently** onto the side



Figure 24 – Gently place the 4s3 onto the side to give easier access to heating platen

- Clean heating platen using soapy water and a damp cloth
- Once clean, upright the unit
- Ensure nothing is obstructing the drawer, reconnect the mains, switch on at the back of the unit
- The drawer will automatically close

7 MAINTENANCE

7.1 Regular Maintenance

The unit does not require regular maintenance but it should be kept clean.



The external casing of the heat sealer can be cleaned with a cloth dipped in water or ethanol (methanol, formaldehyde can also be used).

The unit should not be immersed in solvents.

Do not use acetone or abrasive cleaners.

No parts are to be autoclaved (except adapters).

In case of radioactive spillages it is recommended to use an appropriate cleaning agent.

For any other maintenance operation not indicated in this manual, please contact 4titude.

Any cleaning procedure must be followed with the unit switched off, the power cable disconnected and the heated parts at ambient temperature

8 ACCESSORIES AND CONSUMABLES

The 4s3 is designed to be used with the following consumables:

8.1 Plate Types

Any of the following made from polypropylene, polyethylene or polystyrene.

- SBS format shallow well plates
- Deep-well plates
- Tube blocks (various)
- PCR plates

8.2 Thermal Sealing Plastic or Sealing Film types

- Foil-polypropylene laminate
- Clear polyester-polypropylene laminate
- Clear polymer
- Thin clear polymer
- Foil-laminate
- Foil

8.3 Plate Carriers and Accessories

Code	Description	Plate Type	Included with 4s3
4ti-0615	Adapter for skirted plates	Deep well, 384-well plates	Yes
4ti-0625	Adapter for 96-well PCR plates	96-well PCR plates	No
4i-0616	Adapter for Roche 1536 Plates	Roche 1536 plates	No
4ti-0602	Weighted Platen to hold down sealing sheets	-	Yes
4ti-0612	Sealing frame to hold down sealing sheets (for use with 4ti-0625)	-	No

Refer to pages 20 & 21 for plate carrier usage instructions

9 SEALING PARAMETERS

The following sealing temperatures are for guidance only. Sealing efficiency varies depending on the plate type used.

Add 1 second to the sealing time when a weighted platen is used (4ti-0602)

Part number	Description	Temperature (°C) / Dwell Time (secs)		
		96-well PCR Plates*	384-well PCR Plates*	Vision Plates™ [^]
4ti-0541	Clear Seal	175-185 / 2-3	165-180 / 3	185-200 / 3
4ti-0575	Clear Weld Seal Mk II	175-180 / 2-3	170-175 / 2-3	-
4ti-0581	Clear Seal 3730	165-175 / 3	165-175 / 2	175-185 / 2-3
4ti-0521	Peel Seal	175-185 / 3	170-175 / 2-3	-
4ti-0587	DMSO Resistant Peel Seal	175-185 / 3	170-175 / 2-3	-
4ti-0531	Pierce Seal	160-175 / 2	160-175 / 2	185-200 / 3
4ti-0536	Foil Seal	165-180 / 2	160-175 / 2-3	185-200 / 3
4ti-0547	PS Foil Seal	-	-	185-200 / 3
4ti-0527	Black Seal	-	-	185-200 / 3
4ti-0591	Thermal Bond	170-180 / 2-3	160-170 / 2	-
4ti-0595	Gas Permeable Heat Seal	165-175 / 3	165-175 / 3	175-185 / 3

Table 2 - Sealing Temperatures and Times for different types of plates

* These values are for two-component PCR plates. For one-piece polypropylene plates, increase dwell time by one second.

[^] These values can be used for all polystyrene plates

All sealing parameters were estimated using software version 1.02

These values are for guidance only. It is advisable to conduct trials depending on the plate type being sealed.

10 SHIPPING INSTRUCTIONS

When shipping the unit the original packaging must be used to prevent damage to the instrument.

The manufacturer accepts no responsibility for damage incurred unless the unit is correctly packed as described below and transported using the original packaging.

1. Before shipping remove the plate carrier(s) from the unit.

Note: *If left inside the unit the plate carriers may cause severe damage to the sealer!*

2. Replace protective elastic bands.
3. Push “CLOSE” to close the drawer. Manually push the drawer fully closed.
4. Switch off the unit.

Note: *if the unit is shipped without the protective elastic bands, the front panel can be damaged during shipping.*

5. Place the sealer between the two foam inserts inside the original shipping box.
6. Place the accessories in the smaller cardboard box and place on top of the foam inserts.
7. Close the box using a suitable adhesive tape.

11 WARRANTY

The manufacturer warrants that the product is free from defects in materials and workmanship for a period of 12 months from the date of purchase.

The manufacturer warrants the services it performs and the spare and replacement parts provided, for a period of 90 days from the date of the performance of such services and the date of shipment of the spare or replacement parts, respectively.

The manufacturer warrants that its software enclosed with the product, for a period of 90 days from the date its software is received by the customer, shall perform substantially in accordance with the standard set forth in the user documentation related to such software.

Used/refurbished products that are sold “As Is” are not covered by warranty. Additional coverage plans may be purchased.

If the manufacturer receives note of defects or non-conformance during the warranty period, the manufacturer, will at its option, repair or replace the affected product. The manufacturer will provide at no additional charge parts and labour for factory repairs.

The consumables and shipping costs are not covered under warranty.

Loss, damage or defects resulting from transportation, from external causes not imputable to the manufacturer, from inadequate maintenance, from improper use of the instrument (e.g. operations prohibited or not detailed in the user manual) are not covered under warranty. The manufacturer does not warrant that the operations of the product will be uninterrupted or error free.

The purchaser must control that the installation has been made in a correct way, in compliance with safety standard and law dispositions.

APPENDIX I

4titude® Consumables – Heat Seals

Product Code	Description	Quantity
Heat Seals		
4ti-0520	Peel Seal roll (610m x 78mm) ¹	1 roll
4ti-0520S	Peel Seal sample roll (5m x 78mm) ¹	1 roll
4ti-0521	Peel Seal sheets (125mm x 78mm)	100 sheets
4ti-0522	Peel Seal roll for Velocity11 (500m x 115mm) ²	1 roll
4ti-0522S	Peel Seal sample roll for Velocity11 (5m x 115mm) ²	1 roll
4ti-0525	Black Seal roll (610m x 78mm) ¹	1 roll
4ti-0526	Black Seal roll for Velocity11 (500m x 115mm) ²	1 roll
4ti-0527	Black Seal sheets (125mm x 78mm)	100 sheets
4ti-0530	Pierce Seal roll (610m x 78mm) ¹	1 roll
4ti-0530/REMP	Pierce Seal roll (610m x 78mm) ³	1 roll
4ti-0530S	Pierce Seal sample roll (5m x 78mm) ¹	1 roll
4ti-0531	Pierce Seal sheets (125mm x 78mm)	100 sheets
4ti-0532	Pierce Seal roll for Velocity11 (500m x 115mm) ²	1 roll
4ti-0532/REMP	Pierce Seal roll (500m x 115mm) ⁴	1 roll
4ti-0532S	Pierce Seal sample roll for Velocity11 (5m x 115m) ²	1 roll
4ti-0535	Foil Seal roll (610m x 78mm) ¹	1 roll
4ti-0535/REMP	Foil Seal roll (610m x 78mm) ³	1 roll
4ti-0535S	Foil Seal sample roll (5m x 78mm) ¹	1 roll
4ti-0536	Foil Seal sheets (125mm x 78mm)	100 sheets
4ti-0537	Foil Seal roll for Velocity11 (500m x 115mm) ²	1 roll
4ti-0537/REMP	Foil Seal roll (610m x 78mm) ⁴	1 roll
4ti-0537S	Foil Seal sample roll for Velocity11 (5m x 115mm) ²	1 roll
4ti-0540	Clear Seal roll (500m x 78mm) ¹	1 roll
4ti-0540/REMP	Clear Seal roll (500m x 78mm) ³	1 roll

Product Code	Description	Quantity
4ti-0540S	Clear Seal sample roll (5m x 78mm) ¹	1 roll
4ti-0541	Clear Seal sheets (125mm x 78mm)	100 sheets
4ti-0542	Clear Seal roll for Velocity11 (350m x 115mm) ²	1 roll
4ti-0542/REMP	Clear Seal roll (500m x 115mm) ⁴	1 roll
4ti-0542S	Clear Seal sample roll for Velocity11 (5m x 115mm) ²	1 roll
4ti-0547	PS Foil Seal sheets (125mm x 78mm)	100 sheets
4ti-0573	Clear Weld Seal Mark II roll (610m x 78mm) ¹	1 roll
4ti-0573S	Clear Weld Seal Mark II sample roll (5m x 78mm) ¹	1 roll
4ti-0574	Clear Weld Seal Mark II roll for Velocity11 (500m x 115mm) ²	1 roll
4ti-0574S	Clear Weld Seal Mark II sample roll for Velocity11 (5m x 115mm) ²	1 roll
4ti-0575	Clear Weld Seal Mark II sheets (125mm x 78mm)	100 sheets
4ti-0580	Clear Seal 3730 roll for ABI 3730 sequencer (610m x 78mm) ¹	1 roll
4ti-0580S	Clear Seal 3730 for ABI 3730 sequencer sample roll (5m x 78mm) ¹	1 roll
4ti-0581	Clear Seal 3730 for ABI 3730 sequencer, perforated roll	1000 sheets
4ti-0582	Clear Seal 3730 roll for ABI 3730 sequencer for Velocity11 (500m x 115mm) ²	1 roll
4ti-0582S	Clear Seal 3730 roll for ABI 3730 sequencer for Velocity11 sample roll (5m x 115mm) ²	1 roll
4ti-0585	DMSO resistant Peel Seal roll (500m x 78mm) ¹	1 roll
4ti-0585/REMP	DMSO resistant Peel Seal roll (500m x 78mm) ³	1 roll
4ti-0585S	DMSO resistant Peel Seal sample roll (5m x 78mm) ¹	1 roll
4ti-0586	DMSO resistant Peel Seal roll for Velocity11 (500m x 115mm) ²	1 roll
4ti-0586/REMP	DMSO resistant Peel Seal roll (500m x 78mm) ⁴	1 roll
4ti-0586S	DMSO resistant Peel Seal sample roll for Velocity11 (5m x 115mm) ²	1 roll
4ti-0587	DMSO resistant Peel Seal perforated roll	100 sheets
4ti-0590	Thermal Bond roll (500mm x 78mm) ¹	1 roll
4ti-0590S	Thermal Bond sample roll (5m x 78mm) ¹	1 roll
4ti-0591	Thermal Bond sheets (125mm x 78mm)	100 sheets
4ti-0592	Thermal Bond for Velocity11 (300m x 115mm) ²	1 roll

Product Code	Description	Quantity
4ti-0592S	Thermal Bond for sample roll for Velocity 11 (5m x 115mm)	1 roll
4ti-0595	Gas Permeable Seal sheets (125mm x 78mm)	100 sheets
4ti-0596	Gas Permeable Seal roll (175m x 78mm) ¹	1 roll
4ti-0596S	Gas Permeable Seal sample roll (175m x 78mm) ¹	1 roll

¹ Compatible with Thermo fisher ALPS 300™ / ALPS 3000™ / KBiosystems Wasp™ / KBioscience FlexiSeal and Cube

² Compatible with Agilent (Velocity 11) PlateLoc®

³ Compatible with REMF Portrait Heat Sealer (PHS)

⁴ Compatible with REMF Landscape / Stacking Heat Sealers (LHS/SHS)

4titude® Consumables – FrameStar® PCR Plates

Product Code	Description	Quantity
FrameStar® 384well PCR Plates		
4ti-0380/C	FrameStar® 480, 384well, clear frame	50 plates
4ti-0381	FrameStar® 480, 384well, clear frame, white wells	50 plates
4ti-0382	4ti-0381 plus 50 x qPCR adhesive seals (4ti-0560)	50 plates + 50 seals
4ti-0383	4ti-0380C plus 50 x qPCR adhesive seals (4ti-0560)	50 plates + 50 seals
4ti-0384	FrameStar® 384, purple frame	50 plates
4ti-0384/B	FrameStar® 384, blue frame	50 plates
4ti-0384/C	FrameStar® 384, clear frame	50 plates
4ti-0384/G	FrameStar® 384, green frame	50 plates
4ti-0384/R	FrameStar® 384, red frame	50 plates
4ti-0384/X	FrameStar® 384, black frame	50 plates
4ti-0385	FrameStar® 384, white frame, white wells	50 plates
4ti-0386	FrameStar® 384, black frame, black wells	50 plates

Product Code	Description	Quantity
FrameStar® 96well PCR Plates		
4ti-0710	FrameStar® 96 non-skirted, purple frame	50 plates
4ti-0710/B	FrameStar® 96 non-skirted, blue frame	50 plates

Product Code	Description	Quantity
4ti-0710/C	FrameStar® 96 non-skirted, clear frame	50 plates
4ti-0710/G	FrameStar® 96 non-skirted, green frame	50 plates
4ti-0710/R	FrameStar® 96 non-skirted, red frame	50 plates
4ti-0710/X	FrameStar® 96 non-skirted, black frame	50 plates
4ti-0711	FrameStar® 96 non-skirted, black frame, white wells	50 plates
4ti-0720	FrameStar® 96 non-skirted, low profile, purple frame	50 plates
4ti-0720/B	FrameStar® 96 non-skirted, low profile, blue frame	50 plates
4ti-0720/C	FrameStar® 96 non-skirted, low profile, clear frame	50 plates
4ti-0720/G	FrameStar® 96 non-skirted, low profile, green frame	50 plates
4ti-0720/R	FrameStar® 96 non-skirted, low profile, red frame	50 plates
4ti-0720/X	FrameStar® 96 non-skirted, low profile, black frame	50 plates
4ti-0721	FrameStar® 96 non-skirted, low profile, black frame, white wells	50 plates
4ti-0730	FrameStar® semi-skirted with upstand, purple frame	50 plates
4ti-0730/B	FrameStar® semi-skirted with upstand, blue frame	50 plates
4ti-0730/C	FrameStar® semi-skirted with upstand, clear frame	50 plates
4ti-0730/G	FrameStar® semi-skirted with upstand, green frame	50 plates
4ti-0730/R	FrameStar® semi-skirted with upstand, red frame	50 plates
4ti-0730/X	FrameStar® semi-skirted with upstand, black frame	50 plates
4ti-0731	FrameStar® semi-skirted with upstand, black frame, white wells	50 plates
4ti-0770/C	FrameStar® semi-skirted, clear frame (A12 cut)	50 plates
4ti-0771	FrameStar® semi-skirted, black frame, white wells (A12 cut)	50 plates
4ti-0900/C	FrameStar® semi-skirted, clear frame (H1 cut)	50 plates
4ti-0901	FrameStar® semi-skirted, clear frame, white wells (H1 cut)	50 plates
4ti-0910/C	FrameStar® FastPlate semi-skirted, clear frame	50 plates
4ti-0911	FrameStar® FastPlate semi-skirted, clear frame, white wells	50 plates
4ti-0950/C	FrameStar® 480, semi-skirted, clear frame, clear wells	50 plates
4ti-0951	FrameStar® 480, semi-skirted, clear frame, white wells	50 plates
4ti-0952	4ti-0951 plus 50 x qPCR adhesive seals (4ti-0560)	50 plates + 50 seals

Product Code	Description	Quantity
4ti-0953	4ti-0950/C plus 50 x qPCR adhesive seals (4ti-0560)	50 plates + 50 seals
4ti-0960	FrameStar® 96, skirted, purple frame	50 plates
4ti-0960/B	FrameStar® 96, skirted, blue frame	50 plates
4ti-0960/C	FrameStar® 96, skirted, clear frame	50 plates
4ti-0960/G	FrameStar® 96, skirted, green frame	50 plates
4ti-0960/R	FrameStar® 96, skirted, red frame	50 plates
4ti-0960/X	FrameStar® 96, skirted, black frame	50 plates
4ti-0961	FrameStar® 96, skirted, black frame / white wells	50 plates

4titude® Consumables – General PCR Plates

Product Code	Description	Quantity
General PCR Consumables		
4ti-0740	96well skirted PCR plate	50 plates
4ti-0741	96well skirted PCR plate, white	50 plates
4ti-0750	96well non-skirted PCR plate, black grid reference	50 plates
4ti-0750C	96well non-skirted PCR plate, NO black grid reference	25 plates
4ti-0750/W	96well non-skirted PCR plate, white, black grid reference	50 plates
4ti-0760	96well semi-skirted PCR plate	50 plates
4ti-0761	96well semi-skirted PCR plate, white	50 plates

4titude® Consumables – Storage Plates

Product Code	Description	Quantity
Storage Plates		
4ti-0116	350µl 96 round-well U-bottom plate, polypropylene, clear	100 plates
4ti-0117	330µl 96 round-well, V-bottom plate, polypropylene, clear	100 plates
4ti-0120	1.2ml 96well low profile deep-well plate	50 plates
4ti-0135	96well cap mat (for 1.2ml deep-well plate)	100 mats
4ti-0126	1.2ml 96 square-well, U-bottom deep-well plate, polypropylene, clear	100 plates
4ti-0136	2.2ml 96 square-well, U-bottom deep-well plate, polypropylene, clear	50 plates

4titude® Consumables – Vision Plate™ Screening Plates

Product Code	Description	Quantity
Vision Plate™ Screening Plates (see page 2 for Bar Code pricing)		
4ti-0201	Vision Plate™ 384, 150 micron, TC treated, sterile, with lids,	24 plates
4ti-0201/700	Vision Plate™ 384, 700 micron, TC treated, sterile, with lids,	24 plates
4ti-0202	Vision Plate™ 384, 150 micron, TC treated, sterile	30 plates
4ti-0202/700	Vision Plate™ 384, 700 micron, TC treated, sterile	30 plates
4ti-0203	Vision Plate™ 384, 150 micron, sterile	30 plates
4ti-0203/700	Vision Plate™ 384, 700 micron, sterile	30 plates
4ti-0204	Vision Plate™ 384, 150 micron	30 plates
4ti-0204/700	Vision Plate™ 384, 500 micron	30 plates
4ti-0205	Vision Plate™ 384, 150 micron, Collagen Type 1 coated, sterile, with lids	24 plates
4ti-0206	Vision Plate™ 384, 150 micron, polyD-Lysin coated, sterile, with lids	24 plates
4ti-0207	Vision Plate™ 384, 150 micron, TC treated, sterile, with separate lids	25 plates + 25 lids
4ti-0221	Vision Plate™ 96, 150 micron, TC treated, sterile with lids	24 plates
4ti-0221/700	Vision Plate™ 96, 700 micron, TC treated, sterile with lids	24 plates
4ti-0222	Vision Plate™ 96, 150 micron, TC treated, sterile	30 plates

Product Code	Description	Quantity
4ti-0222/700	Vision Plate™ 96, 700 micron, TC treated, sterile	30 plates
4ti-0223	Vision Plate™ 96, 150 micron, sterile	30 plates
4ti-0223/700	Vision Plate™ 96, 700 micron, sterile	30 plates
4ti-0224	Vision Plate™ 96, 150 micron	30 plates
4ti-0224/700	Vision Plate™ 96, 700 micron	30 plates
4ti-0225	Vision Plate™ 96, 150 micron, Collagen Type 1 coated, sterile, with lids	24 plates
4ti-0226	Vision Plate™ 96, 150 micron, polyD-Lysin coated, sterile, with lids	24 plates
4ti-0241	Vision Plate™ 24, 150 micron, TC treated, sterile with lids	24 plates
4ti-0241/700	Vision Plate™ 24, 700 micron, TC treated, sterile with lids	24 plates
4ti-0242	Vision Plate™ 24, 150 micron, TC treated, sterile	30 plates
4ti-0242/700	Vision Plate™ 24, 700 micron, TC treated, sterile	30 plates
4ti-0243	Vision Plate™ 24, 150 micron, sterile	30 plates
4ti-0243/700	Vision Plate™ 24, 700 micron, sterile	30 plates
4ti-0244	Vision Plate™ 24, 150 micron	30 plates
4ti-0244/700	Vision Plate™ 24, 700 micron	30 plates
4ti-0245	Vision Plate™ 24, 175 micron, Collagen Type 1 coated, sterile, with lids	24 plates
4ti-0246	Vision Plate™ 24, 175 micron, polyD-Lysin coated, sterile, with lids	24 plates

4titude® Consumables – Assay Plates

Product Code	Description	Quantity
Assay Plates		
4ti-0263	96-well Assay Plate, solid base plate, black, non-sterile	100 plates
4ti-0264	384-well Assay Plate, solid base plate, black, non-sterile	100 plates
4ti-0274	384-well Assay Plate, solid base plate, white, non-sterile	100 plates
4ti-0254	384-well Assay Plate, solid base plate, clear, non-sterile	100 plates