

# User Manual

## Air Pressure Transmitter Kit

### Contents

**Section 1.0 – About Air Pressure Transmitters**

**Section 2.0 - Installation**

## Section 1.0 - About Air Pressure Transmitters

### About

The Apreco Air Pressure Transmitter senses the pressure of air and compatible gases and sends a standard 4-20 mA output signal. The housing is specifically designed to enable the gauge to be removed for annual servicing and calibration.

A wide range of models are available factory calibrated to specific ranges. Pressure connections are inherent to the glass filled plastic moulded housing making installation quick and easy. Digital push-button zero and span simplify calibration over typical turn-potentiometers. 90mm digit LCD shows the pressure differential readings in pascals

## Section 2.0 Installation

### Preparation & fitting of Air Pressure Transmitter

#### **Step 1**

Install The plastic tubing and Sensor plates as per the Site layout drawings.

#### **Step 2**

Cut aperture for the backing box which houses the APT gauge  
Aperture size: W = 145mm H= 155mm

Notes:

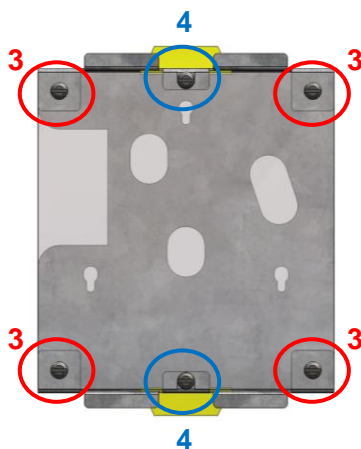
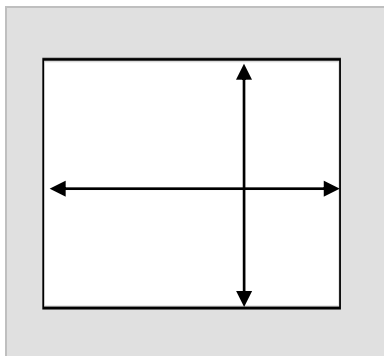
- 1) Aperture cut-out needs to be LEVEL
- 2) Minimum depth of 50mm is required to fit the backing box

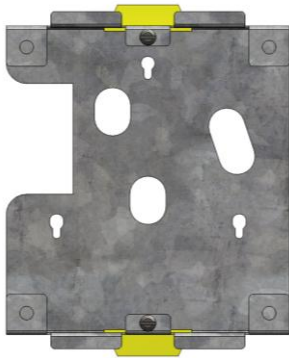
#### **Step 3**

Fit Plastic cover screen to front of the backing box before installing into the wall. This keeps the spacing between hole centres correct.

#### **Step 4**

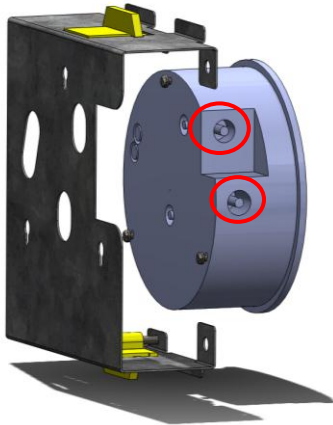
Fit the backing box into the wall tightening the screws in the yellow clamping blocks as required, whilst taking care not to over tighten.





## Step 5

Remove the plastic screen to continue to fit the gauge

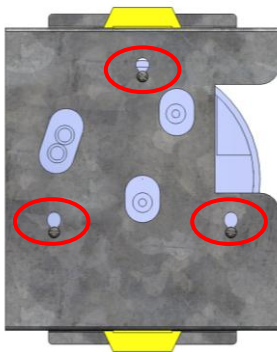


## Step 6

Connect the tubes that have been installed to the applicable HIGH/LOW connectors.

Connect the 2 wire power supply as per the wiring diagram.

Note: Power supplied by others



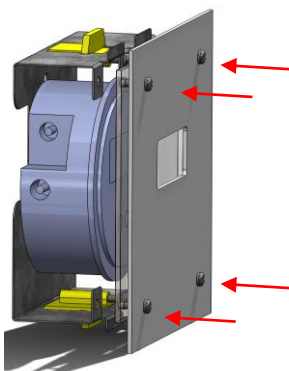
## Step 7

Guide the gauge into the housing and locate the fixing screws into the slots as shown.



## Step 8

Use the 'UNITS' button to select Pa unit display range. *Note: Do NOT press the 'ZERO' button unless you are calibrating the unit.*



## Step 9

Fit the plastic cover screen and metal cover plate, using the M4 x16 screws provided to secure in place

Note: Take care not to over tighten.