

TERRATEK

4.8V Cordless Screwdriver TMCS01



User Manual – Please read and retain for future reference.

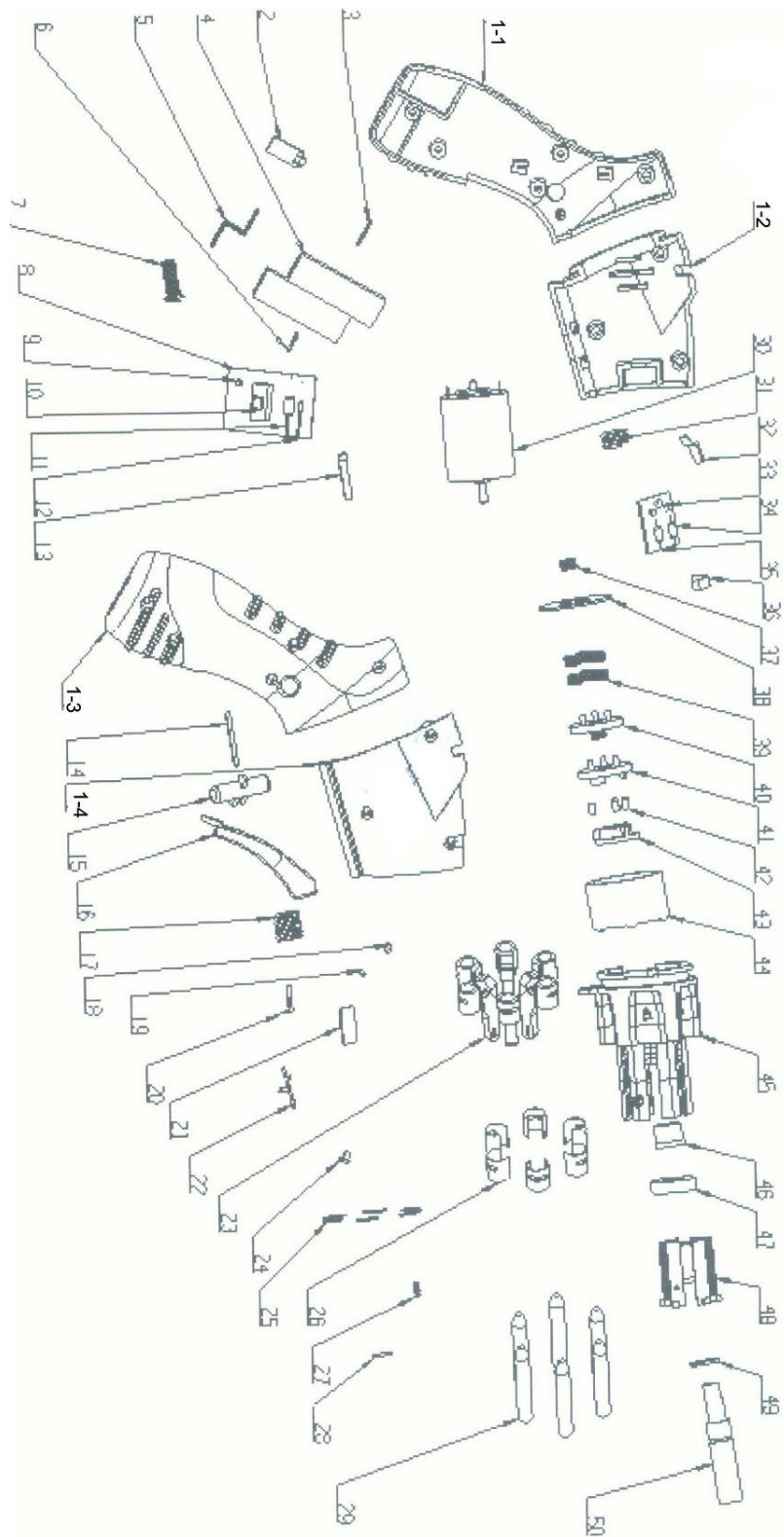
Contents

Parts List
Technical Information
Safety Instructions
Using your drill
Maintenance
Warranty

Parts List

No.	Description	No.	Description
1	Housing	25	Clip
1-1	Left handle housing	26	inside ring
1-2	Left housing	27	Spring
1-3	Right handle housing	28	Screw
1-4	Right housing	29	Pin
2	Insert pad	30	Motor
3	Battery connecting sheet	31	Spring
4	Battery	32	Button
5	Battery connecting sheet	33	Indicator
6	Battery connecting sheet	34	Resistance
7	Screw	35	Indicator PCB
8	PCDB	36	Indicator cover
9	Pin	37	Motor gear
10	Switch	38	Washer
11	Resistance	39	Gear
12	Resistance	40	Bracket
13	Switch connecting board	41	Planet bracket
14	Opening lock	42	Pin
15	Lock pole	43	Shaft lock
16	Trigger	44	Inside gear
17	Switch spring	45	Plastic chuck
18	LED	46	Sleeve
19	Pin	47	Bearing
20	Connecting sheet for LED	48	Plastic cup
21	LED switch	49	Clip spring
22	LED PCB	50	Main shaft
23	Bit holder	51	
24	Screw	52	

Exploded Assembly Diagram



NOTICE: Actual product may vary from pictures shown.



- 1) Chuck
- 2) Work light
- 3) Forward/Reverse switch
- 4) On/Off switch
- 5) Handle rotation lock
- 6) Forward/ Reverse rotary indicator
- 7) Work light switch
- 8) Charging connection
- 9) Battery charger

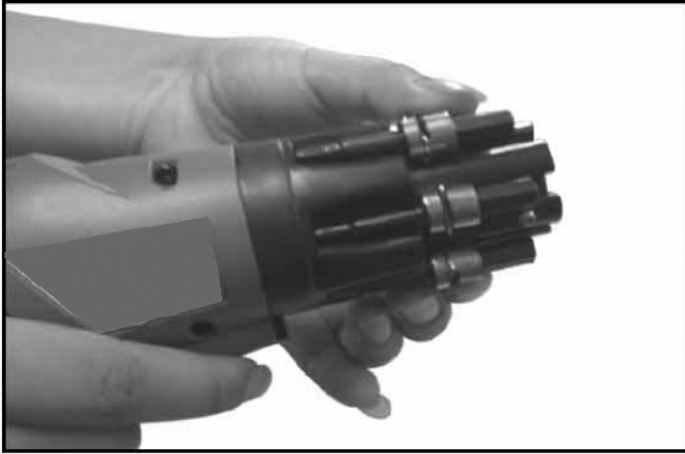


Fig. 1



Fig. 2

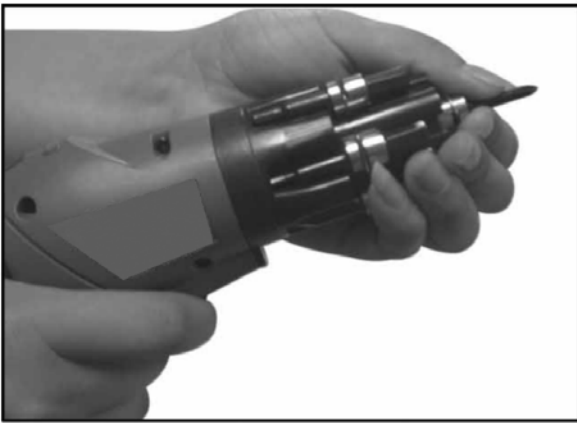


Fig. 3

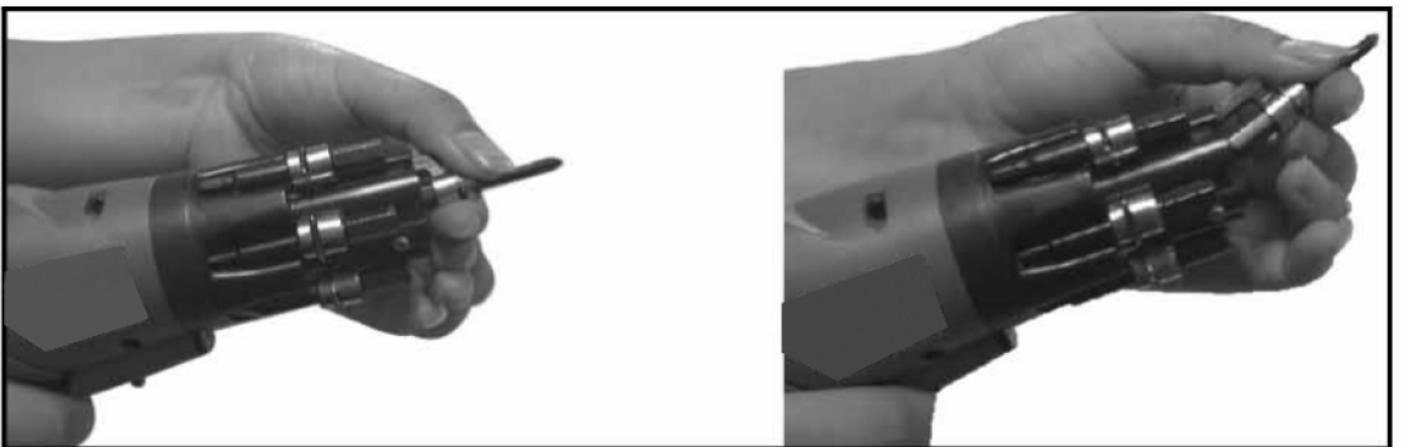


Fig. 4

Technical Information

Voltage: 4.8V
Battery: Ni-Cd, 600mAh
No load speed: 150 rpm
Charging time: 3–5 hours

Noise

Sound pressure level: LPA= 70dB(A) Uncertainty KPA=3dB
Sound power level: LWA= 97dB(A) Uncertainty KWA=3dB
Vibration: ah= 5.02m/s² Uncertainty K=1.5m/s²

Charger

Input: 230-240V~50Hz
Output: 6V DC, 300mA



Read this entire manual before using this product. Failure to do so can result in serious injury. Save this manual for future reference.

Copyright© 2012 by ACL Group (Intl) Ltd. All rights reserved. This manual or any artwork contained herein must not be reproduced in any shape or form without the express written consent of ACL Group (Intl) Ltd. Diagrams within this manual may not be drawn proportionally. Due to continuing improvements, actual product may differ slightly from the product described herein.

Read and Keep This Manual

Please read carefully all instructions within this manual. Failure to follow all safety warnings can result in serious personal injury. The term "Power Tool" in all of the following warnings refers to your mains operated (corded) or battery operated (cordless) power tool.

Important SAFETY Information



This symbol is to warn you of potential personal injury hazards. Please read carefully the notes along side this warning to avoid possible injury or death.

General Safety Rules



WARNING! Read all instructions. Failure to follow all instructions listed below may result in electric shock, fire and/or serious injury. The term "power tool" in all of the warnings listed refers to corded or cordless power tools.

Work area safety

Keep work area clean and well lit. *Cluttered or dark areas invite accidents.*

Do not operate power tools in explosive atmospheres, such as in the presence of flammable liquids, gases or dust. *Power tools create sparks which may ignite the dust or fumes.*

Keep children and bystanders away while operating a power tool. *Distractions can cause you to lose control.*

Electrical safety

Before use, ensure that the power outlet you are using matches the plug on your power tool and that the voltage of the outlet matches that of your power tool.

Only use grounded extension cords with power tools fitted with 3 pin plugs and if using outdoors ensure any extension cord is suitable for outdoor use.

Always try to avoid body contact with grounded surfaces, such as radiators, cooking ranges and any other fixed appliance with metal surfaces.

Do not expose your power tool to wet or damp conditions and NEVER use in rain.

Check regularly the power cord of your machine and any extension cord that you are using for damage.

Do not carry or pull the machine with the power cord.

Ensure the cord is clear from hot surfaces, oil or sharp objects.

Personal safety

Never use your power tool whilst under the influence of alcohol, drugs or medication.

Tiredness can often cause accidents, stay alert.

Never use your power tool without the correct guards in place.

Always use approved eye protection and dust mask. Non slip safety shoes and hearing protectors should be worn at all times when using your power tool.

Ensure any dust collecting device supplied with your machine is connected correctly before use.

Ensure all loose clothing, long hair or jewelry is kept clear of the machine.

Before plugging your power tool into the power outlet ensure the power tool is in the OFF position.

Check that wrenches or adjusting keys have been removed. Any wrench or key left attached to a moving part can result in injury.

Power tool use and care.

Keep your power tool clean and well serviced at all times.

Never adjust or service any power tool before disconnecting from the mains electricity supply.

Always use the correct tool for the job.

Never force the tool to work harder than it is designed to do.

Never use your power tool with broken parts such as switches, guide fences or leg stands.

ALWAYS keep your power tools away from children.

Keep cutting tools sharp to ensure less stress on the motor.

Only have your power tool serviced by a qualified repair agent using manufacturers recommended parts.

Service

Have your power tool serviced by a qualified repair person using only identical replacement parts.

This will ensure that the safety of the power tool is maintained.

Develop a periodic maintenance schedule for your tool. When cleaning a tool be careful not to disassemble any portion of the tool since internal wires may be misplaced or pinched or safety guard return springs may be improperly mounted. Certain cleaning agents such as gasoline, carbon tetrachloride, ammonia, etc. may damage plastic parts.

When servicing a tool, use only identical replacement parts. Follow instructions in the Maintenance section of this manual. Use of unauthorized parts or failure to follow Maintenance Instructions may create a risk of electric shock or injury.

WARNING: For your own safety read Instruction Manual before operating your power tool.

A) Wear eye protection.

B) Keep hands out of the path of cutting tools.

C) Do not operate tool without guards in place.

D) Do not perform any operation freehand.

E) Never reach around cutting tools.

F) Turn off tool and wait for cutting tools to stop before moving work piece or changing settings.

G) Disconnect power (or unplug tool) before changing cutting tools or servicing.

GENERAL SAFETY INSTRUCTIONS

Read this owner's manual completely and make sure you understand all of its safety guidelines.

1. **KEEP GUARDS IN PLACE** and in working order.

2. **REMOVE ADJUSTING KEYS & WRENCHES.** Before turning on the power tool, make sure the keys and adjusting wrenches have been removed.

3. **KEEP WORK AREA CLEAN.** Cluttered areas and benches invite accidents.
4. **ALWAYS REMAIN ALERT WHEN THE TOOL IS IN USE.** Inattention on the part of the operator may lead to serious injury.
5. **DON'T USE IN A DANGEROUS ENVIRONMENT.** Don't use power tools in damp or wet locations or expose them to rain. Keep work area well lit.
6. **KEEP CHILDREN AWAY.** All visitors should remain at a safe distance from work area.
7. **MAKE WORKSHOP CHILD-PROOF** with padlocks, master switches or by removing starter keys.
8. **USE THE RIGHT TOOL.** Don't force a tool or attachment to do a job for which it was not designed.
9. **USE THE PROPER EXTENSION CORD.** Make sure your extension cord is in good condition. When using an extension cord, be sure to use one heavy enough to carry the current your product will draw. An undersized cord will cause a drop in line voltage resulting in loss of power and overheating. If in doubt, use the next heavier gauge. The smaller the gauge number, the heavier the cord.
10. **DON'T FORCE THE TOOL.** It has been designed to operate at maximum safety and performance levels.
11. **DO NOT FORCE THE MATERIAL BEING CUT.** Always let the tool cut at its own speed.
12. **WEAR PROPER APPAREL.** Do not wear loose clothing, neckties, rings, bracelets or other jewelry which may get caught in moving parts. Non-slip foot wear is recommended. Wear protective hair covering if you have long hair.
13. **ALWAYS USE SAFETY GLASSES.** Also use face or dust mask for commercial cutting operations. Everyday eyeglasses only have impact-resistant lenses, they are NOT safety glasses.
14. **SECURE WORK.** Use clamps or a vise instead of your hand to hold work when practical. This safety precaution allows for proper tool operation using both hands.
15. **DON'T OVERREACH.** Keep proper footing and balance at all times.
16. **MAINTAIN TOOLS WITH CARE.** Keep tools clean and in good working condition for maximum safety performance. Follow instructions for lubricating and changing accessories.
17. **DISCONNECT TOOLS BEFORE SERVICING** – when changing accessories, such as blades, bits, cutters, etc.
18. **REDUCE THE RISK OF UNINTENTIONAL STARTING.** Make sure switch is in OFF position before plugging in.
19. **USE RECOMMENDED ACCESSORIES.** Consult the owner's manual for recommended accessories. The use of improper accessories may increase risk of injury.
20. **MAKE SURE YOU USE THE CORRECT TOOL** for the job you are doing.
21. **NEVER STAND ON TOOL.** Serious injury could occur if the tool is tipped or if the cutting tool is unintentionally contacted.
22. **CHECK DAMAGED PARTS.** Before further use of the tool, damaged part(s), (i.e., guard) should be carefully checked to determine that it will operate properly and perform its intended function. Check for alignment of moving parts, binding of moving parts, breakage of parts, mounting and any other condition that may affect the tools operation. A guard or other part that is damaged should be properly repaired or replaced.
23. **DO NOT ALTER THE PLUG.**
24. **NEVER LEAVE TOOL RUNNING UNATTENDED.** Turn power off. Don't leave tool until it comes to a complete stop.
25. Double Insulation eliminates the need for the three wire grounded power cord and grounded power supply system.

This power tool is supplied with all the relevant safety guards and features, it should be checked before every operation, and this manual should be read and kept in a safe place. Whilst we warn of all the possible risks attached to using power tools any operator must have read and understood the manual and apply their own caution and common sense when using this power tool. Following this guide will greatly reduce your risk of electric shock or injury.

Only use qualified repair agents to service this power tool.

Only use qualified electrician to repair any damaged wiring.

NEVER remove the grounding prong from the power tool or extension cord.

Additional safety Instructions

Use appropriate detectors to determine if utility lines are hidden in the work area or call the local utility company for assistance. Contact with electric lines can lead to fire and electric shock. Damaging a gas line can lead to explosion. Cutting into a water line causes property damage or may cause an electric shock.

Switch off the power tool immediately if the tool insert jams.

Hold power tool by the insulated gripping surfaces, when performing an operation where the Cutting tool may run into hidden wiring. Contact with a "live" wire will make exposed metal parts of the tool "live" and shock the operator.

When working with the machine, always hold it firmly with both hands and provide for a secure stance. The power tool is guided more secure with both hands.

Keep your workplace clean. Blends of materials are particularly dangerous. Dust from light alloys can burn or explode.

Always wait until the machine has come to a complete stop before placing it down.

Before any work on the machine (e. g., maintenance, tool change, etc.) as well as during transport and storage, set the rotational direction switch to the centre position. Unintentional actuation of the On/Off switch can lead to injuries.

Avoid unintentional switching on. Carrying the power tool with your finger on the On/Off invites accidents.

Do not open the battery. Danger of short circuiting.

Protect the power tool against heat, e. g., also against continuous sun irradiation and fire. There is danger of explosion.

In case of damage and improper use of the battery, vapors may be emitted. Provide for fresh air and seek medical help in case of complaints. The vapors can irritate the respiratory system.

When the battery is defective, liquid can escape and come into contact with adjacent components. Check any parts concerned. Clean such parts or replace them, if required.

Power Extension Cords

When using any extension cord the machine will suffer a power reduction due to the drop in voltage caused by the length of the cord. This can be partially offset by selecting extension cords with lower gauge wire.

Check all extension cords for damage before use.

Avoid sharp objects.

Do not position the cord where it could be subject to traffic passing over it.

Symbols

IMPORTANT: Some of the following symbols may be used on your tool.


V.....volts

A.....amperes

Hz.....hertz


~alternating current

.../m.....revolutions per minute

class II construction (double insulated)

Kg.....kilograms

n₀.....No load speed

Conforms to European safety standards

DCDirect Current

Battery use and care

A battery operated tool with integral batteries or a separate battery pack must be recharged only with the specified charger for the battery.

A charger that may be suitable for one type of battery may create a risk of fire when used with another battery.

Use battery operated tool only with specifically designed battery pack.

Use of any other batteries may create a risk of fire.

NEVER place hands or other body parts near the drill bit or chuck during operation.

Hold the drill by its handle only. Because the cordless driver drill operates by battery power, be aware of the fact that it can begin to operate at any time.

Charging the battery pack (Fig. 7)

The charging procedure begins as soon as the mains plug of the battery charger is plugged into a socket outlet and the charge connector is plugged into the socket on the bottom of the handle.

1. Be sure to place the tool on a clean dry surface within 3 feet (1 meter) of a wall receptacle.
2. Plug the AC adaptor into the wall outlet 230V~ 50Hz.
3. Insert the AC adaptor into the Charging connecting located on the bottom of the screwdriver handle.
4. Allow 3-5 hours to fully charge the battery.
5. Disconnect the adapter after charging.
6. Unplug charger from power source.

Note: The battery is supplied partially charged. To ensure full capacity of the battery, completely charge the battery before using your power tool for the first time.

WARNING: Improper use of the battery or battery charger can lead to serious injury.

To avoid these injuries:

- A) **NEVER** disassemble the battery.
- B) **NEVER** incinerate the battery, even if it is damaged or is completely worn out.
The battery can explode in a fire.
- C) **NEVER** short-circuit the battery.
- D) **NEVER** charge outdoors. Keep the battery away from direct sunlight and use only where there is low humidity and good ventilation.
- E) **NEVER** charge when the temperature is below 32°F (0°C) or above 104°F (40°C).
- F) **NEVER** connect two battery chargers together.
- G) **NEVER** insert foreign objects into the hole for the battery or the battery charger.
- H) **NEVER** use a booster transformer when charging.
- I) **NEVER** use an engine generator or DC power to charge.
- J) **NEVER** store the battery or battery charger in places where the temperature may reach or exceed 104°F (40°C).
- K) **ALWAYS** operate charger on standard household electrical power (240 volts).
Using the charger on any other voltage may overheat and damage the charger.
- L) **ALWAYS** wait at least 15 minutes between charges to avoid overheating the charger.
- M) **ALWAYS** disconnect the power cord from its receptacle when the charger is not in use.

Specific Safety Rules

1) Hold power tools by insulated gripping surfaces when performing an operation where the cutting tool may contact hidden wiring.

Contact with a "live" wire will make exposed metal parts of the tool "live" and shock the operator.

2) Wear ear protection. Exposure to noise can cause hearing loss.

3) Be aware that this tool is always in an operating condition, since it does not have to be plugged into an electrical outlet.

4) If the bit becomes jammed, immediately turn the trigger switch off to prevent an overload which can damage the battery pack or motor. Use reverse to loosen jammed bits.

5) Do NOT operate the Forward/Reverse lever when the trigger switch is on. The battery will discharge rapidly and damage to the unit may occur.

6) When storing or carrying the tool, set the Forward/Reverse lever to the center position (switch lock).

7) Do not strain the tool by holding the speed control trigger halfway so that the motor stops.

8) Be careful not to get dust inside the chuck.

9) Do not touch the rotating parts to avoid injury.

10) Do not use the tool continuously for a long period of time. Stop using the tool from time to time to avoid overheating of the motor.

11) Do not drop the tool.

Unpacking

Carefully remove the product and any accessories from the box. Make sure that all items listed in the packing list are included.

Package contents

- A) Screwdriver
- B) Charger
- C) User manual

Functional Description

WARNING: Disconnect the plug from the power source before making any assembly, adjustments or changing accessories. Such preventive safety measures reduce the risk of starting the tool accidentally.

Operation

On-Off Switch (Fig. A)

To **start** the machine, press the On/Off switch and keep it pressed.

To switch off the machine, **release** the On/Off switch.

Forward/Reverse Switch

Actuate the rotational direction switch only when the machine is at a standstill.

The rotational direction switch **(3)** (Fig. A) is used to reverse the rotational direction of the machine.

Right Rotation: For drilling and driving in screws, push the rotational direction switch **(3)** left to the stop.

Left Rotation: For loosening and unscrewing screws and nuts, press the rotational direction switch **(3)** through to the right stop.

MOUNTING AND DISMOUNTING THE BIT

See Figs. 1 thru 5

1. Rotate the magazine to look for a bit. (Fig.1)
2. Pick a bit by lifting its carrier forward.
3. Insert the bit into the shaft.
4. To load the bit.
5. Pivot the carrier back to its storage position. Make sure the carrier is locked.

REPLACING Bit

1. Pull out a bit from its carrier and replace a new one. (Fig.6)
2. Repeat the mounting bit procedure.

Dust/Chip Extraction

Dusts from materials such as lead-containing coatings, some wood types, minerals and metal can be harmful to one's health. Touching or breathing-in the dusts can cause allergic reactions and/or lead to respiratory infections of the user or bystanders.

Certain dusts, such as oak or beech dust, are considered as carcinogenic, especially in connection with wood-treatment additives (chromate, wood preservative). Materials containing asbestos may only be worked by specialists.

– Provide for good ventilation of the working place.

– It is recommended to wear a P2 filter-class respirator.

Observe the relevant regulations in your country for the materials to be worked.

Disposal of the exhausted battery

WARNING: Do not dispose of the exhausted battery. The battery must explode if it is incinerated. The product that you have purchased contains a rechargeable battery. The battery is recyclable. At the end of its useful life, under various state and local laws, it may be illegal to dispose of this battery into the municipal

waste stream. Check with your local solid waste officials for details in your area for recycling options or proper disposal.

Disposal

Drill contains NICKEL-CADMIUM battery. Battery must be disposed of or recycled properly. Check with local government for proper disposal.

Power tools, accessories and packaging should be sorted for environmentally-friendly recycling.

Only for EC countries:



Do not dispose of power tools into household waste!

According to the European Directive 2002/96/EC on waste electrical and electronic equipment and its incorporation into national right, products that are no longer suitable for use must be separately collected and sent for recovery in an environmentally-friendly manner.

Battery packs/batteries:



Ni-Cd

Do not dispose of battery packs/batteries into household waste, water or fire. Battery packs/batteries must be collected, recycled or disposed of in an environmentally-friendly way.

Only for EC countries:

Defective or dead batteries must be recycled according to the directive 2006/66/EC.

Maintenance

Use only a dry, soft cloth for wiping the unit. Do not use a damp cloth, thinner, or other volatile solvents for cleaning.

Accessories

CAUTION: Use only accessories or attachments recommended for use with your Terratek tool specified in this manual. The use of any other accessories or attachments might present a risk of injury to persons. Only use accessory or attachment for its stated purpose.

Declaration of Conformity

We ACL Group (Intl.) Ltd, England DN6 8LZ declare that the Cordless Drill has been manufactured according to our full quality assurance procedures.

The declaration is to certify that it conforms to CE, EMC, LVD and RoHS directives:

EN55014-1:2006+A1

EN55014-2:1997 +A1+A2

All provisions of Annex 1 of Council Directive 2004/108/EC – EMC directive

EN60745-1: 2009

EN60745-2-2: 2003+A11:2007+A1:2009+A12:2009

All provisions of Annex 1 of Council Directive 2006/42/EC – Machinery Directive
RoHS 2002/95/EC



A handwritten signature in black ink, appearing to read 'Alan Garnett', is written over a white rectangular background.

Mr. Alan Garnett, UK QA Manager

Environmental Protection

RECYCLING: WASTE ELECTRICAL PRODUCTS SHOULD NOT BE DISPOSED OF WITH HOUSEHOLD WASTE. PLEASE RECYCLE WHERE FACILITIES EXIST. CHECK WITH YOUR LOCAL AUTHORITY OR RETAILER FOR RECYCLING ADVICE.



Please read the following carefully

ACL Group (Intl) Ltd. and/or its distributor have provided the parts list and assembly diagram as a reference tool only. Neither ACL Group (Intl). Ltd. or its distributor makes any representation or warranty of any kind to the buyer that he or she is qualified to do any repairs or replace any parts of this product. ACL Group (Intl) Ltd. and its distributor expressly state that all repairs or parts replacement should be done by certified or licensed technicians. The buyer assumes all risk and liability arising out of his or her repairs or parts replacement to the original product.

12 Months Limited Warranty

If within 12 months from the date of purchase you experience any problems with your product, please return the product to its distributor/dealer for repair or replacement. This warranty DOES NOT COVER normal wear, or any damage as a result of accidents, misuse, abuse or negligence.

ACL Group (Intl) Ltd
Doncaster, England
Email: info@terratekintl.com
www.terratekintl.com