

# User Manual

·D7 A!" ' )'

D7 #/\$ ( Ž' G6 7 'k #5 A 8 ' @L, \$\$#  
... @L \* \$\$žJ; 5 ž @7 8 ž @5 BžI G6 &'\$  
... UbX'7 :

' fX Ed - GYdhYa VYf 201\$

**Version: January 2013**

---

## Copyright

The documentation and the software included with this product are copyrighted 2010 by Advantech Co., Ltd. All rights are reserved. Advantech Co., Ltd. reserves the right to make improvements in the products described in this manual at any time without notice. No part of this manual may be reproduced, copied, translated or transmitted in any form or by any means without the prior written permission of Advantech Co., Ltd. Information provided in this manual is intended to be accurate and reliable. However, Advantech Co., Ltd. assumes no responsibility for its use, nor for any infringements of the rights of third parties, which may result from its use.

## Acknowledgements

Award is a trademark of Award Software International, Inc.

VIA is a trademark of VIA Technologies, Inc.

IBM, PC/AT, PS/2 and VGA are trademarks of International Business Machines Corporation.

Intel, Pentium, Celeron, and MMX are registered trademarks of Intel Corporation.

Microsoft Windows® is a registered trademark of Microsoft Corp.

RTL is a trademark of Realtek Semi-Conductor Co., Ltd.

ESS is a trademark of ESS Technology, Inc.

UMC is a trademark of United Microelectronics Corporation.

SMI is a trademark of Silicon Motion, Inc.

Creative is a trademark of Creative Technology LTD.

All other product names or trademarks are properties of their respective owners.

For more information on this and other Advantech products, please visit our websites at:

<http://www.advantech.com>

<http://www.advantech.com/eplatform>

For technical support and service, please visit our support website at:

<http://www.advantech.com/support>

This manual is for the PCM-3353.

Part No. 2006335312

Printed in China

Edition 3

September 2010

# Declaration of Conformity

## FCC Class A

Note: This equipment has been tested and found to comply with the limits for a Class A digital device, pursuant to part 15 of the FCC Rules. These limits are designed to provide reasonable protection against harmful interference when the equipment is operated in a commercial environment. This equipment generates, uses, and can radiate radio frequency energy and, if not installed and used in accordance with the instruction manual, may cause harmful interference to radio communications. Operation of this equipment in a residential area is likely to cause harmful interference in which case the user will be required to correct the interference at his own expense.

**Warning!** *There is a danger of a new battery exploding if it is incorrectly installed. Do not attempt to recharge, force open, or heat the battery. Replace the battery only with the same or equivalent type recommended by the manufacturer. Discard used batteries according to the manufacturer's instructions.*



## Technical Support and Assistance

1. Visit the Advantech web site at <http://support.advantech.com> where you can find the latest information about the product.
2. Contact your distributor, sales representative, or Advantech's customer service center for technical support if you need additional assistance. Please have the following information ready before you call:
  - Product name and serial number
  - Description of your peripheral attachments
  - Description of your software (operating system, version, application software, etc.)
  - A complete description of the problem
  - The exact wording of any error messages

---

## Packing List

Before setting up the system, check that the items listed below are included and in good condition. If any item does not accord with the table, please contact your dealer immediately.

- 1 x PCM-3353 SBC
- 1 x Power cable
- 1 x Audio cable (p/n:1700000918)
- 1 x COM cable (p/n: 1703040157)
- 1 x Four COM cable (p/n:1701400181)
- 1 x Keyboard/Mouse cable (p/n:1703060053)
- 1 x Y cable (for KB/MS extention) (p/n:1700060202)
- 1 x Ethernet RJ-45 Conn.conversion cable . (p/n:1701100202)
- 1 x LPT port cable (p/n:1700260250)
- 1 x IDE cable (p/n:1701440350)
- 1 x VGA cable (p/n:1700000898)
- 2 x USB cable (bracket type with two USB ports) (p/n:1703100121)
- 1 x Startup manual
- 1 x CD-ROM (Manual, Driver, Utility)

Model No. List	Description
PCM-3353F-L0A2E	PC/104+ SBC w/AMD LX800, VGA, LVDS, LAN, USB and CF
PCM-3353F-J0A2E	PC/1-4+ SBC w/AMD LX600, VGA, LVDS, LAN, USB and CF
PCM-3353Z-512A2E	PCM-3353F-L0A2E w/ phoenix gold package
PCM-3353Z2-512A2E	PCM-3353F-L0A2E w/ phoenix platinum package

# Contents

<b>Chapter 1</b>	<b>General Information .....</b>	<b>1</b>
1.1	Introduction .....	2
1.2	Features .....	2
1.3	Specifications .....	2
1.3.1	Standard PC/104 Biscuit SBC Functions .....	2
1.3.2	VGA/LVDS Interface .....	3
1.3.3	Ethernet Interface .....	3
1.3.4	Audio Function .....	3
1.3.5	OS support .....	3
1.3.6	Mechanical and Environmental .....	3
1.4	Board Layout: Dimensions .....	4
	Figure 1.1 Board layout: dimensions (component side) .....	4
	Figure 1.2 Board layout: dimensions (solder side) .....	4
<b>Chapter 2</b>	<b>Installation.....</b>	<b>5</b>
2.1	Jumpers .....	6
	Table 2.1: Jumper/Switch Setting .....	6
2.2	Connectors .....	6
	Table 2.2: Connector Table .....	6
2.3	Locating Connectors .....	7
	Figure 2.1 Connectors (component side) .....	7
	Figure 2.2 Connectors (solder side) .....	7
2.4	Setting Jumpers .....	8
2.5	Installing SO-DIMMs .....	8
2.6	IDE, CDROM Hard Drive Connector (CN11) .....	9
2.6.1	Connecting the Hard Drive .....	9
2.7	Solid State Disk .....	9
2.7.1	Compact Flash (CN41) .....	9
2.8	Parallel Port Connector (CN19) .....	9
2.9	Keyboard and PS/2 Mouse Connector (CN18) .....	9
2.10	Power Connectors (CN38) .....	10
2.10.1	Main Power Connector, +5 V, +12 V (CN38) .....	10
2.10.2	Power Reset Button .....	10
2.11	Audio Interfaces (CN34/35) .....	10
2.11.1	Audio Connector Audio-out(CN35), Audio-in(CN34) .....	10
2.12	COM Port Connector (CN20,CN30) .....	10
2.12.1	Serial Port RS-422/485 (CN20) .....	10
	Table 2.3: Serial Port RS-422/485 (CN39) .....	10
2.13	VGA/LCD Interface Connections .....	10
2.13.1	CRT Display Connector (CN27) .....	10
2.13.2	TTL TFT LCD Connector (CN4) .....	10
2.13.3	LVDS TFT LCD Connector (CN42) .....	11
2.14	Ethernet Configuration .....	11
2.14.1	100Base-T Connector (CN26) .....	11
2.15	Watchdog Timer Configuration .....	11
2.16	USB Connectors (CN15,CN17) .....	11
2.17	GPIO (General Purpose Input Output) (CN36/CN37) .....	11
<b>Chapter 3</b>	<b>Award BIOS Setup .....</b>	<b>13</b>
3.1	Introduction .....	14
3.1.1	CMOS RAM Auto-backup and Restore .....	14

3.2	Entering Setup .....	14
	Figure 3.1 Award BIOS setup initial screen .....	14
3.3	Standard CMOS Setup .....	15
	Figure 3.2 Standard CMOS setup screen .....	15
3.4	Advanced BIOS Features .....	16
	Figure 3.3 Advanced BIOS features screen .....	16
3.5	Advanced Chipset Features.....	18
	Figure 3.4 Advanced chipset features screen .....	18
3.6	Integrated Peripherals.....	19
	Figure 3.5 Integrated peripherals screen.....	19
3.7	Power Management Setup .....	21
	Figure 3.6 Power management setup screen.....	21
3.8	PnP/PCI Configurations .....	22
	Figure 3.7 PnP/PCI configurations screen .....	22
3.9	PC Health Status .....	23
	Figure 3.8 PC health status screen .....	23
3.10	Load Optimized Defaults.....	24
	Figure 3.9 Load optimized defaults screen.....	24
3.11	Password Setting .....	24
	Figure 3.10 Password setting screen .....	24
3.12	Save & Exit Setup .....	25
	Figure 3.11 Save & exit setup screen.....	25
3.13	Exit without Saving.....	26
	Figure 3.12 Exit without saving screen.....	26

## Appendix A Pin Assignments..... 27

A.1	Jumper and Connector Tables.....	28
	Table A.1: SW1, CF Master / Slave Selector.....	28
	Table A.2: J3, Clear CMOS .....	28
	Table A.3: CN39, COM2 Setting.....	28
	Table A.4: J5, PCI VI/O POWER .....	29
	Table A.5: J6, LVDS Power Selector.....	29
	Table A.6: CN42, LVDS LCD I/F .....	29
	Table A.7: CN38, Power Input .....	30
	Table A.8: CN4, TFT LCD I/F .....	30
	Table A.9: CN5, Inverter Power .....	31
	Table A.10: CN6, SMBus.....	32
	Table A.11: CN32, Reset / Buzzer pin header.....	32
	Table A.12: CN36, GPIO1 .....	32
	Table A.13: CN37, GPIO2 .....	33
	Table A.14: CN11, IDE .....	33
	Table A.15: CN27, CRT .....	34
	Table A.16: CN15, USB1/2 .....	35
	Table A.17: CN17, USB3/4.....	35
	Table A.18: CN30, COM1/2/3/4.....	36
	Table A.19: CN19, Print Port .....	37
	Table A.20: CN20, RS422/485 .....	38
	Table A.21: CN35, AUDIO-OUT .....	38
	Table A.22: CN34, AUDIO-IN.....	38
	Table A.23: CN23, ISA -5V & -12V Input.....	39
	Table A.24: CN26, LAN1 .....	39
	Table A.25: CN18, KB/MS .....	40
	Table A.26: CN40, DDR RAM SOCKET.....	40
	Table A.27: CN41, CF SOCKET.....	40
	Table A.28: CN33, Battery Connector .....	40

## Appendix B System Assignments..... 41

B.1	System I/O Ports .....	42
	Table B.1: System I/O Ports .....	42
B.2	1st MB Memory Map .....	42
	Table B.2: 1st MB Memory Map .....	42
B.3	DMA Channel Assignments .....	43
	Table B.3: DMA Channel Assignments.....	43
B.4	Interrupt Assignments .....	43
	Table B.4: Interrupt Assignments.....	43

## **Appendix C**      **Watchdog Timer Sample Code.....45**

C.1	Watchdog Function .....	46
-----	-------------------------	----

## **Appendix D**      **GPIO Sample Code.....49**

D.1	GPIO Sample Code .....	50
-----	------------------------	----





# Chapter 1

## General Information

This chapter gives background information on the PCM-3353.

---

## 1.1 Introduction

The PCM-3353 is a fanless, best-cost, performance PC/104+ SBC (Single Board Computer) geared to satisfy the needs for various industrial computing equipment. PCM-3353 is ideal for communication, gaming and medical applications that require flat panel support using digital displays with TTL and LVDS interfaces and single Ethernet ports.

For those who want superior performance for various low-power embedded applications, PCM-3353 uses an AMD LX-800 processor clocked at 500 MHz, in conjunction with onboard DDR333 system memory.

PCM-3353 offers convenient connector layout, easy assembly, multiple I/O, and includes single 10/100Mbps Ethernet, four USB (Universal Serial Bus) 2.0 and four serial ports for easy system expansibility.

## 1.2 Features

- AMD low power LX800 500MHz/LX600 366MHz Processor
- Supports DDR memory
- Supports 24-bit TFT LCD interface
- Supports 18-bit LVDS interface (supports 24-bit JEIDA LVDS)
- Supports 1 x 100Base-T Fast Ethernet
- Supports Four USB2.0 ports
- Supports Four COM ports
- PC/104+ expansion interface

## 1.3 Specifications

### 1.3.1 Standard PC/104 Biscuit SBC Functions

- **CPU:** AMD Geode® LX800/LX600 processor, up to 500 MHz
- **System memory:** Support SO-DIMM DDR 333/400 MHz, up to 1 GB
- **2nd cache memory:** 128 KB on the processor
- **System chipset:** AMD Geode LX800/LX600
- **BIOS:** AWARD 4Mbit Flash BIOS
- **Watchdog timer:** 255 levels timer interval
- **Expansion interface:** PC/104+
- **Battery:** Lithium 3V/196 mAH
- **Enhanced IDE interface:** One channel supports up to two EIDE devices. BIOS auto-detect, PIO Mode 3 or Mode 4, supports UDMA 33/66 mode
- **Serial ports:** Four serial RS-232 ports in one 40 pin connector (CN30: COM1/2/3/4). RS-422 and RS-485 in one pinheader (CN20) and can be configured via CN39 connector.
- **Parallel port:** One parallel port, supports SPP/EPP/ECP mode
- **Keyboard/mouse connector:** Supports one standard PC/AT keyboard and a PS/2 mouse
- **Audio:** Supports AC97 Audio stereo sound
- **USB:** Four USB 2.0 ports compliant universal serial bus ports
- **CF:** Solid State Disk (SSD) supports one 50-pin socket for CFC type I (type II optional)

### 1.3.2 VGA/LVDS Interface

- **Chipset:** AMD Geode LX800/LX600
- **Memory Size:** Optimized Shared Memory Architecture, supports 64 MB frame buffer using system memory
- **Resolution:** CRT resolution: up to 1600 x 1200 x 16 bpp at 100 Hz and up to 1024 x 768 x 32 bpp at 60 Hz for TFT LCD
- **LCD interface:** Supports up to 24-bit TFT LCD (TTL signal)  
Supports 18-bit LVDS LCD (supports 24-bit JEIDA LVDS)
- **Dual simultaneous display:** CRT + LCD, CRT + LVDS

### 1.3.3 Ethernet Interface

- **Chipset supports:** 1 x 10/100 Mbps - Intel 82541PI
- **Interface:** 1 x internal box header
- Standard IEEE 802.3u (100 BASE-T) protocol compatible

### 1.3.4 Audio Function

- **Audio controller:** Realtek ALC 203 chipset, supports AC97 3D Audio stereo sound
- **Audio interface:** Microphone in, Line in, Line out

### 1.3.5 OS support

- This board supports Win XP, Win CE and Win XPe.
- For further information about OS support in your PCM-3353, visit the following web resource Advantech: website: [www.advantech.com](http://www.advantech.com) or please contact technical support center

### 1.3.6 Mechanical and Environmental

- **Dimensions:** 96 x 115 mm (3.77"x 4.05"), Mechanical Drawing (dxf file) is available.
- **Power supply type:** AT
- **Power requirement:** +5 V  $\pm$  5%, +12 V  $\pm$  5% (Optional), (5V only, 12V optional for PC104 add on card and LCD inverter)
- **Power consumption:** (Geode LX800, 256 MB DDR333)
  - Max: +5 V @ 1.51 A, +12 V @ 0.1 A
  - Typical: +5 V @ 1.35 A, +12 V @ 0.1A
- **Operating temperature:** 0 ~ 60° C (32 ~ 140° F)
- **Operating humidity:** 10% ~ 90% relative humidity, non-condensing
- **Weight:** 0.85 kg (reference weight of total package)

## 1.4 Board Layout: Dimensions

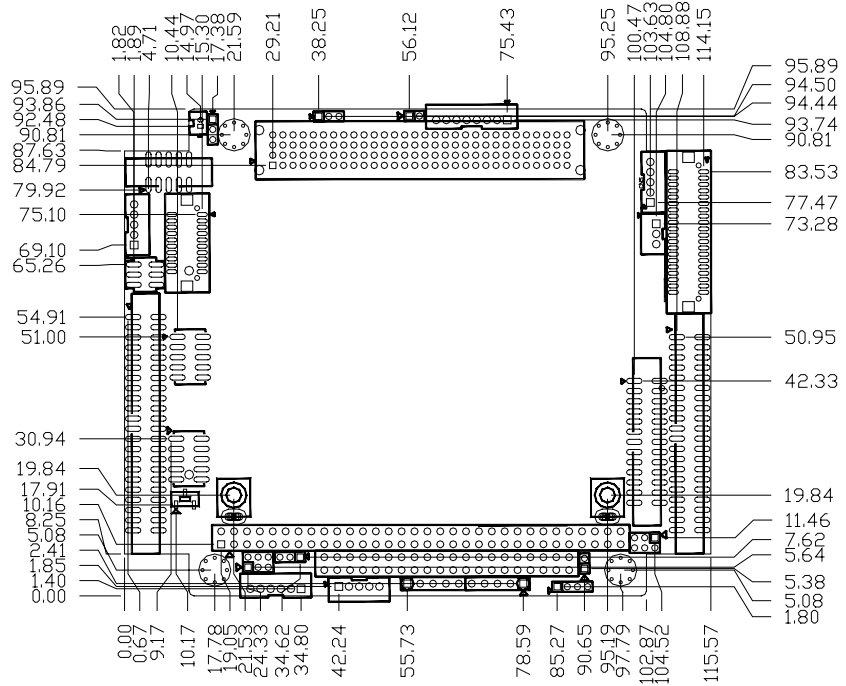


Figure 1.1 Board layout: dimensions (component side)

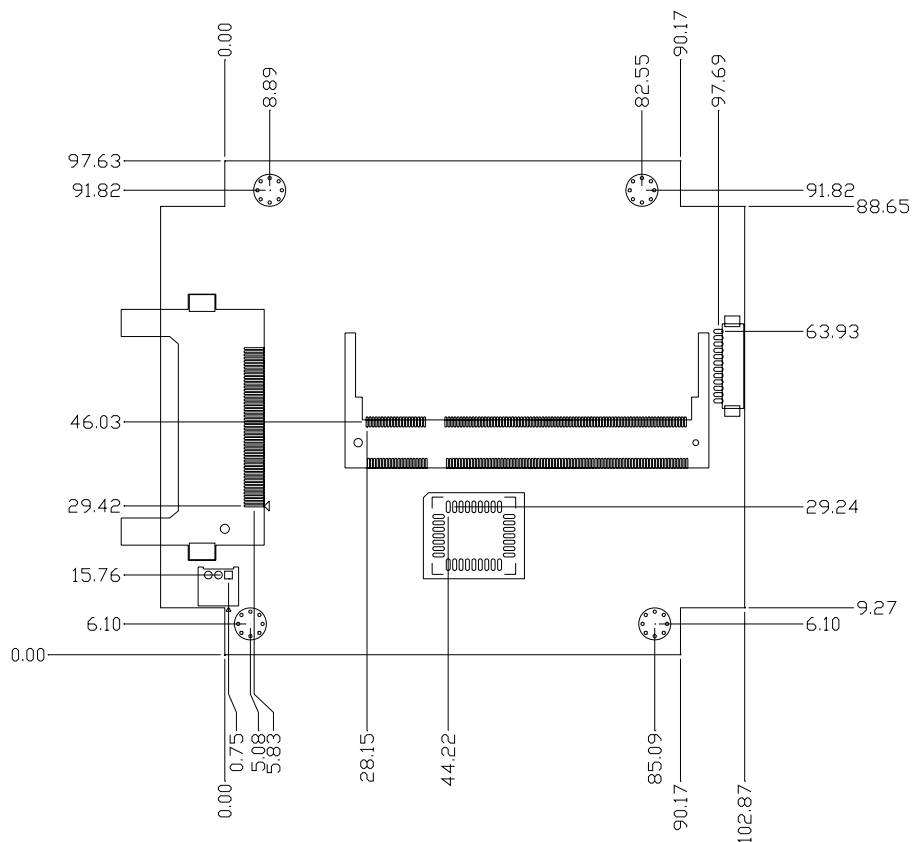


Figure 1.2 Board layout: dimensions (solder side)

# Chapter 2

## Installation

This chapter explains the setup procedures of the PCM-3353 hardware, including instructions on setting jumpers and connecting peripherals, switches and indicators. Be sure to read all safety precautions before you begin the installation procedure.

## 2.1 Jumpers

The PCM-3353 has a number of jumpers that allow you to configure your system to suit your application. The table below lists the functions of the various jumpers.

**Table 2.1: Jumper/Switch Setting**

J3	Clear CMOS
J5	PCI VI/O Power Selector
CN39	COM2 Setting
SW1	CF Master / Slave Selector
J6	LVDS Power Selector

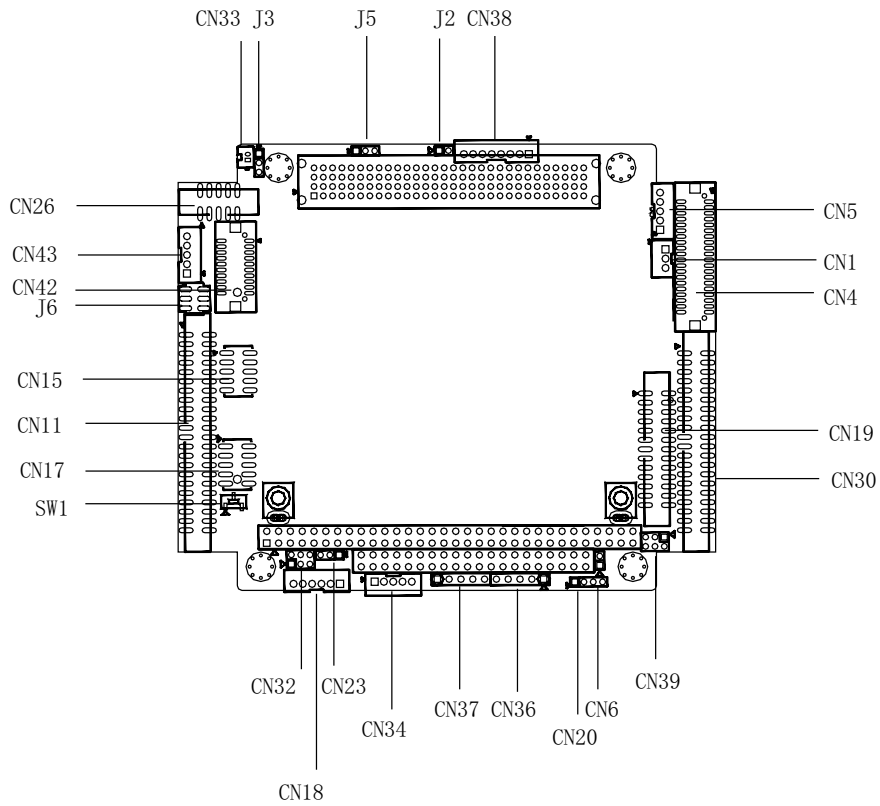
## 2.2 Connectors

Onboard connectors link the PCM-3353 to external devices such as hard disk drives, a keyboard, or floppy drives. The table below lists the function of each of the board's connectors.

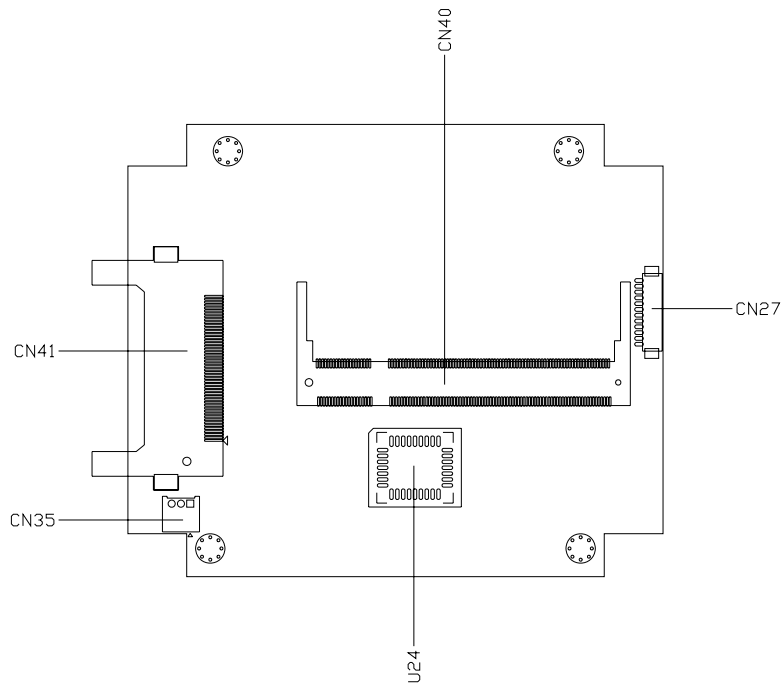
**Table 2.2: Connector Table**

CN4	TFT LCD I/F
CN5	Inverter Power
CN6	SMBus
CN11	IDE
CN15	USB1/2 / CN17 USB 3/4
CN18	KB/MS
CN19	Print Port
CN20	RS422/485
CN23	ISA -5 V & -12 V Input
CN26	LAN
CN27	CRT
CN30	COM1/2/3/4
CN32	Reset / Buzzer pin header
CN33	Battery Connector
CN35	AUDIO-OUT / CN34 AUDIO-IN
CN36	GPIO1
CN37	GPIO2
CN38	Power Input
CN40	DDR RAM Socket
CN41	CF Socket
CN42	LVDS LCD I/F
CN43	Inverter Power (LVDS)

## 2.3 Locating Connectors



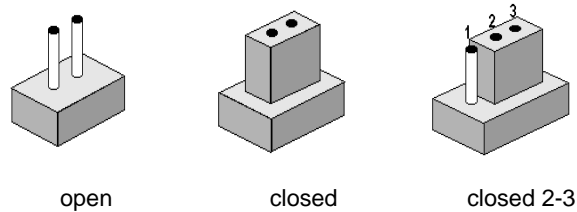
**Figure 2.1 Connectors (component side)**



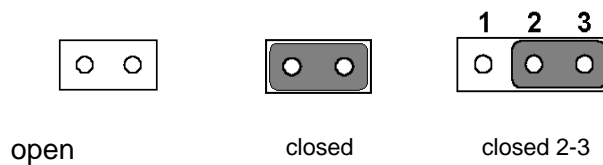
**Figure 2.2 Connectors (solder side)**

## 2.4 Setting Jumpers

You may configure your card to match the needs of your application by setting jumpers. A jumper is a metal bridge used to close an electric circuit. It consists of two metal pins and a small metal clip (often protected by a plastic cover) that slides over the pins to connect them. To “close” a jumper, you connect the pins with the clip. To “open” a jumper, you remove the clip. Sometimes a jumper will have three pins, labeled 1, 2 and 3. In this case you would connect either pins 1 and 2, or 2 and 3.



The jumper settings are schematically depicted in this manual as follows:.



A pair of needle-nose pliers may be helpful when working with jumpers. If you have any doubts about the best hardware configuration for your application, contact your local distributor or sales representative before you make any changes. Generally, you simply need a standard cable to make most connections.

## 2.5 Installing SO-DIMMs

The procedures for installing SODIMMs are described below. Please follow these steps carefully. You can install SDRAM memory modules using 200-pin SODIMMs (Small Outline Dual In-line Memory Modules).

1. Ensure that all power supplies to the system are switched off.
2. Tilt the SODIMM card just above the board and slide it into the housing card slot.
3. Push the module into the socket until the module gently snaps in. There should only be a slight insertion force to engage the module into the contacts. Make sure that the module and the housing are aligned and locked in place.



## 2.6 IDE, CDROM Hard Drive Connector (CN11)

The board provides 1 IDE channel which you can attach up to two Enhanced Integrated Drive Electronics hard disk drives or CDROM to the board's internal controller. Its IDE controller uses a PCI interface. This advanced IDE controller supports faster data transfer, PIO mode 3, mode 4 and up to UDMA 33/66.

### 2.6.1 Connecting the Hard Drive

Connecting drives is done in a daisy-chain fashion. This package includes One 44 PIN IDE cable that can connect to 1.8" and 2.5" drives.

1. Connect one end of the cable to Hard Drive connector. Make sure that the red (or blue) wire corresponds to pin 1 on the connector, which is labeled on the board (on the right side).
2. Plug the other end of the cable into the Enhanced IDE hard drive, with pin 1 on the cable corresponding to pin 1 on the hard drive. (See your hard drive's documentation for the location of the connector.)

If desired, connect a second drive as described above.

Unlike floppy drives, IDE hard drives can connect to either end of the cable. If you install two drives, you will need to set one as the master and one as the slave by using jumpers on the drives. If you install only one drive, set it as the master.

## 2.7 Solid State Disk

The board provides a CompactFlash card type I socket and type II for optional kit.

### 2.7.1 Compact Flash (CN41)

The CompactFlash card shares a secondary IDE channel which can be enabled/disabled via the BIOS settings.

## 2.8 Parallel Port Connector (CN19)

Normally, the parallel port is used to connect the cable to a printer. The board includes a multi-mode (ECP/EPP) parallel port accessed via CN19 and a 26-pin flat-cable connector. You will need an adapter cable if you use a traditional DB-25 connector. The adapter cable has a 26-pin connector on one end, and a DB-25 connector on the other.

The parallel port is designated as LPT1, and can be disabled or changed to LPT2 or LPT3 in the system BIOS setup.

The parallel port interrupt channel is designated to be IRQ7.

You can select ECP/EPP/ECP DMA channel via BIOS setup.

## 2.9 Keyboard and PS/2 Mouse Connector (CN18)

The board provides a keyboard connector that supports both a keyboard and a PS/2 style mouse. In most cases, especially in embedded applications, a keyboard is not used. If the keyboard is not present, the standard PC/AT BIOS will report an error or fail during power-on self-test (POST) after a reset. The PCM 3353's BIOS standard setup menu allows you to select "All, But Keyboard" under the "Halt On" selection. This allows no-keyboard operation in embedded system applications, without the system halting under POST.

---

## 2.10 Power Connectors (CN38)

### 2.10.1 Main Power Connector, +5 V, +12 V (CN38)

Supplies main power +5 V to the PCM-3353, and to devices that require +12 V.

### 2.10.2 Power Reset Button

Momentarily pressing the reset button will activate a reset. The switch should be rated for 10 mA, 5 V.

## 2.11 Audio Interfaces (CN34/35)

### 2.11.1 Audio Connector Audio-out(CN35), Audio-in(CN34)

The board provides all major audio signals on a 8-pin cable connector, These audio signals include Microphone in (mono), Line in (stereo) and Line out (stereo).

## 2.12 COM Port Connector (CN20,CN30)

The board provides four serial ports: Four serial RS-232 ports in one 40 pin connector (CN30: COM1/2/3/4). It provides connections for serial devices or a communication network. You can find the pin assignments for the COM port connector in Appendix C.

### 2.12.1 Serial Port RS-422/485 (CN20)

Serial port can be configured to operate in RS-422 and RS-485 mode. RS-422 and RS-485 in one pinheader (CN20) and can be configured via CN39 connector.

**Table 2.3: Serial Port RS-422/485 (CN39)**

Setting	Function
1-2 (default)	RS-232
3-4	RS-485
5-6	RS-422

## 2.13 VGA/LCD Interface Connections

The board's PCI SVGA interface can drive conventional CRT displays and is capable of driving a wide range of flat panel displays.

### 2.13.1 CRT Display Connector (CN27)

The CRT display connector is a 15-pin D-SUB connector used for conventional CRT displays.

### 2.13.2 TTL TFT LCD Connector (CN4)

For PCM-3353 series, CN4 consists of a 40-pin connector which can support up to 24-bit LCD panel. It is Hirose's product no. DF13A-40DP-1.25 V

### 2.13.3 LVDS TFT LCD Connector (CN42)

Four PCM-3353 series, the board supports 1 channel 18-bit LVDS LCD panel displays.

## 2.14 Ethernet Configuration

The board is equipped with one high performance 32-bit PCI-bus Ethernet interface which are fully compliant with IEEE 802.3U 10/100Mbps standards. They are supported by all major network operating systems.

### 2.14.1 100Base-T Connector (CN26)

100Base-T connections are made via one internal 10-pin box header.

## 2.15 Watchdog Timer Configuration

An onboard watchdog timer reduces the chance of disruptions which EMP (electromagnetic pulse) interference can cause. This is an invaluable protective device for standalone or unmanned applications. Setup involves one jumper and running the control software (refer to Appendix A).

## 2.16 USB Connectors (CN15,CN17)

The board provides up to four USB (Universal Serial Bus) ports using Plug and Play. The USB interfaces comply with High Speed USB specification Rev. 2.0 which supports 480 Mbps transfer rate, and are fuse protected.

The USB interface is accessed through two 5 x 2-pin flat-cable connectors. You will need an adapter cable if you use a standard USB connector. The adapter cable has a 5 x 2-pin connector on one end and a USB connector on the other.

The USB interfaces can be disabled in the system BIOS setup.

## 2.17 GPIO (General Purpose Input Output) (CN36/CN37)

The board supports 8-bit GPIO through GPIO connector. The 8 digital inputs and outputs can be programmed to read or control devices, with each input or output defined. The default setting is 8 bits input.



# Chapter 3

## Award BIOS Setup

## 3.1 Introduction

Award's BIOS ROM has a built-in setup program that allows users to modify the basic system configuration. This type of information is stored in battery-backed memory (CMOS RAM) so that it retains the setup information when the power is turned off.

### 3.1.1 CMOS RAM Auto-backup and Restore

The CMOS RAM is powered by an onboard button cell battery. When you finish BIOS setup, the data in CMOS RAM will be automatically backed up to Flash ROM. If operation in harsh industrial environments causes a software error, the BIOS will recheck the data in CMOS RAM and automatically restore the original data in Flash ROM to CMOS RAM for booting.

## 3.2 Entering Setup

Turn on the computer and check for the ipatch code. If there is a number assigned to the patch code, it means that the BIOS supports your CPU.

If there is no number assigned to the patch code, please contact Advantech's applications engineer to obtain an up-to-date patch code file. This will ensure that your CPU's system status is valid. After ensuring that you have a number assigned to the patch code, press <Del> to enter the setup.

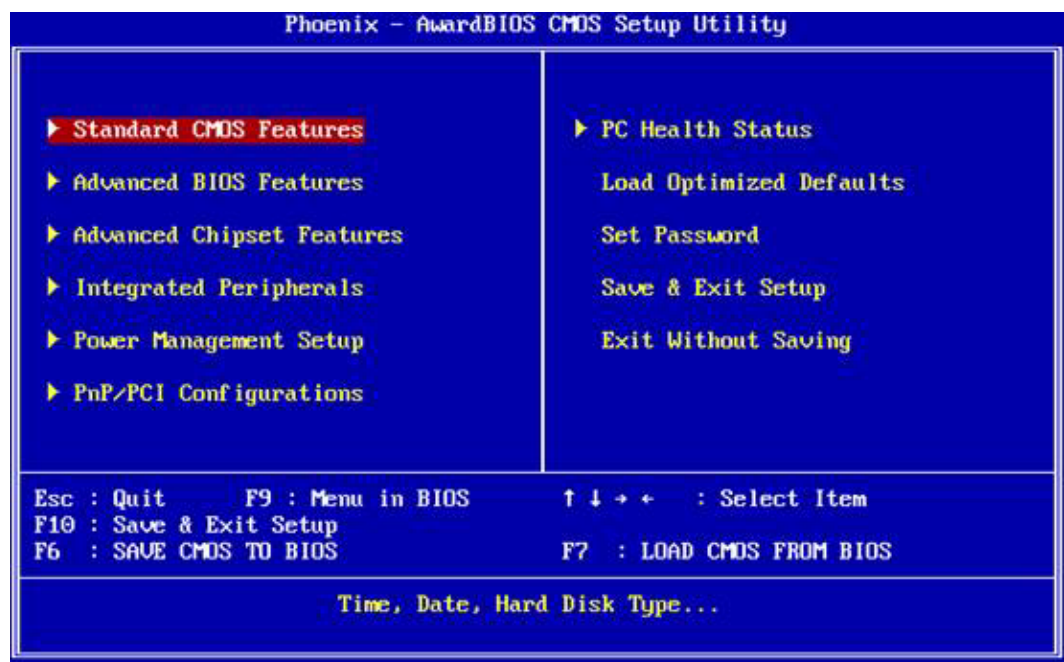


Figure 3.1 Award BIOS setup initial screen

**Note!**



If you intend to change the CMOS setting without restoring the previous backup, you have to click on "DEL" within two seconds of the "CMOS checksum error..." display screen message appearing. Then enter the "Setup" screen to modify the data. If the "CMOS checksum error..." message appears again and again, please check to see if you need to replace the battery in your system.

### 3.3 Standard CMOS Setup

Choose the “Standard CMOS Features” option from the “Initial Setup Screen” menu, and the screen below will be displayed. This menu allows users to configure system components such as date, time, hard disk drive, video, Halt On, display, and memory.

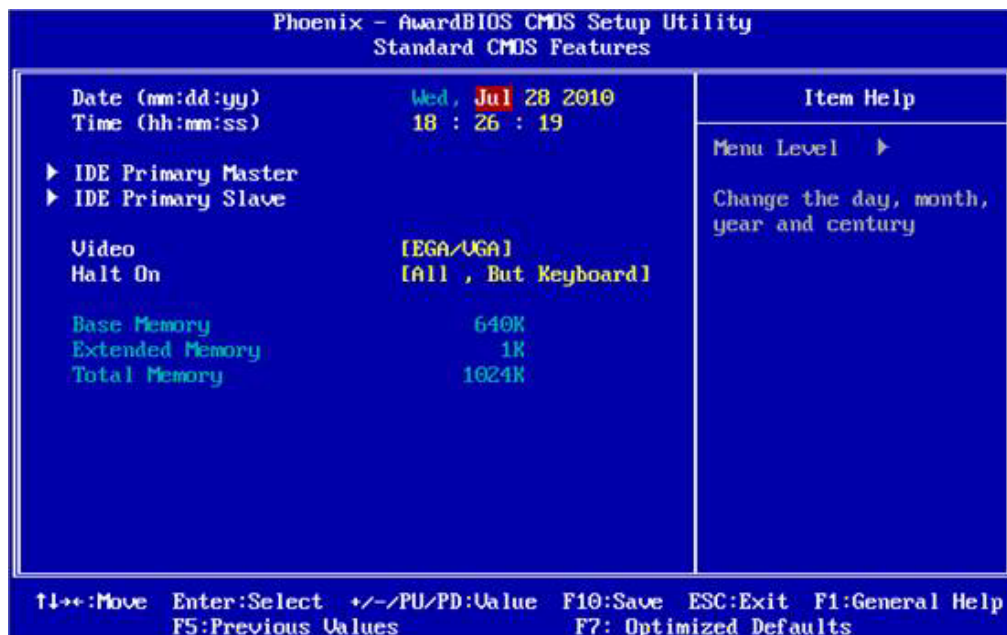


Figure 3.2 Standard CMOS setup screen

- **Date**  
The date format is <Weekday>, <Month>, <Day>, <Year>.
- **Time**  
The time format is in <hours> : <minutes> : <seconds>, based on 24-hour time.
- **IDE Primary Master/Slave**  
IDE HDD Auto-Detection. Press "Enter" for automatic device detection.
- **Halt on**  
The item determines whether the computer will stop if an error is detected during power up.
- **Base Memory**  
The BIOS POST displays the amount of base (or conventional) memory installed in the system.
- **Extended Memory**  
The BIOS POST displays the amount of extended memory (above 1 MB in the CPU's memory address map) installed in the system.
- **Total Memory**  
This item displays the total system memory size.
 

No Errors	The system boot will not stop for any error.
All Errors	Whenever the BIOS detects a non-fatal error the system will be stopped.
All, But Keyboard	The system boot will not stop for a keyboard error; it will stop for all other errors. (Default value)

## 3.4 Advanced BIOS Features

The “Advanced BIOS Features” screen appears when choosing the “Advanced BIOS Features” item from the Initial Setup Screen menu. It allows the user to configure the board according to his particular requirements. Below are some major items that are provided in the Advanced BIOS Features screen. A quick booting function is provided for your convenience. Simply enable the Quick Booting item to save yourself valuable time.

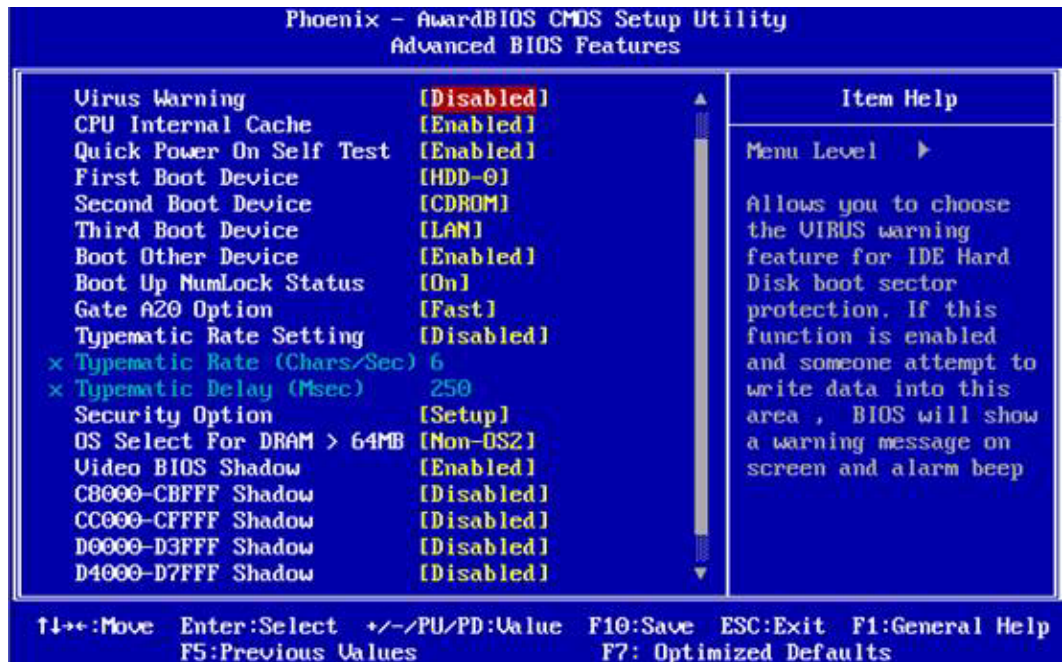


Figure 3.3 Advanced BIOS features screen

- **Virus Warning**  
If enabled, a warning message and alarm beep activates if someone attempts to write here. The commands are `[Enabled]` or `[Disabled]`.
- **CPU Internal Cache**  
This item allows user to enable CPU internal cache. (Disable is sometimes useful for troubleshooting.)
- **Quick Power On Self Test**  
This BIOS feature allows you to decrease the time it takes to boot up the computer by shortening or skipping certain standard booting procedures. If enabled, the BIOS will shorten the booting process by skipping some tests and shortening others. If disabled, the BIOS will run the whole gamut of boot-up tests
- **First/Second/Third/Other Boot Device**

Floppy	Assign this boot device priority to Floppy.
HDD	Assign this boot device priority to Hard Disk.
CDROM	Assign this boot device priority to CDROM.
USB-FDD	Assign this boot device priority to USB-FDD.
USB-CDROM	Assign this boot device priority to USB-CDROM.
USB-HDD	Assign this boot device priority to USB-HDD.
LAN	Assign this boot device priority to LAN.



Disabled Do not assign this boot priority.

■ **Boot Up NumLock Status [On]**

When enabled, the keyboard keypad boots up in number mode. When disabled, the keypad boots up in cursor control mode (arrow mode).

■ **Gate A20 Option [Fast]**

This item enables users to switch A20 control by port 92 or not.

■ **Typematic Rate Setting [Disabled]**

This item enables users to enable or disable typematic action. When enabled, they can set the two typematic controls items, controlling the speeds of:

- Typematic Rate (Chars/Sec)  
This item controls the speed at which the system registers repeated key-strokes. The eight settings are 6, 8, 10, 12, 15, 20, 24 and 30 characters/second.
- Typematic Delay (Msec)  
This item sets the keypress delay before typematic repetition kicks in. The four delay options are 250, 500, 750 and 1000 milliseconds.

**Note!** *These typematic settings apply to systems that communicate with the keyboard via BIOS. For Windows systems, typematic settings are controlled by keyboard driver settings in Windows Control Panel.*



■ **Security Option [Setup]**

System System can not boot and can not access to Setup page if the correct password is not entered at the prompt.

Setup System will boot, but access to Setup is denied if the correct password is not entered at the prompt. (Default value)

**Note!** *To disable security, select PASSWORD SETTING in the main menu. Then you will be asked to enter a password. Simply press <Enter> to disable security. When security is disabled, the system will boot and you can enter Setup freely.*



■ **OS Select For DRAM > 64M [Non-OS2]**

Select OS2 only if system is running OS/2 operating system with greater than 64 MB of RAM on the system.

■ **Video BIOS Shadow [Enabled]**

For copying of video BIOS to shadow RAM--sometimes improves performance.

- C8000-CBFFF Shadow [Disabled]  
Control copying of this block to shadow RAM.
- CC000-CFFFF Shadow [Disabled]  
Control copying of this block to shadow RAM.
- D0000-D3FFF Shadow [Disabled]  
Control copying of this block to shadow RAM.
- D4000-D7FFF Shadow [Disabled]  
Control copying of this block to shadow RAM.
- D8000-DBFFF Shadow [Disabled]  
Control copying of this block to shadow RAM.
- DC000-DFFFF Shadow [Disabled]  
Control copying of this block to shadow RAM.

- **Small Logo (EPA) Show [Disabled]**  
Show EPA logo during system post stage.
- **Cyrix 6X86/MII CPUID [Enabled]**  
This item allows user to control BIOS enabled or disabled CPUID for CPU Cyrix/MII.

## 3.5 Advanced Chipset Features

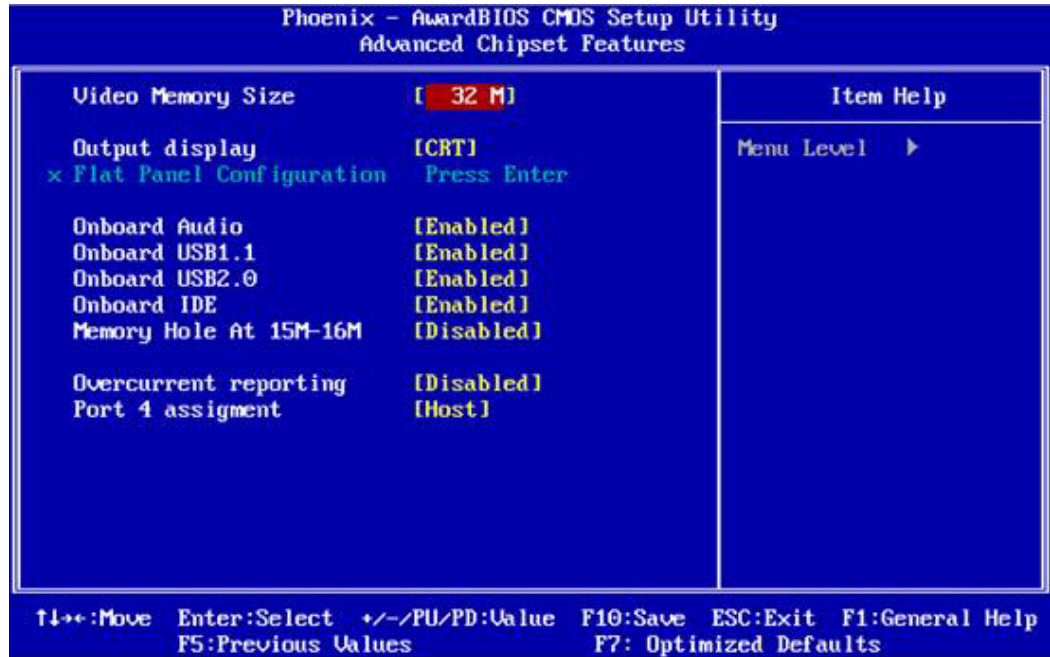



Figure 3.4 Advanced chipset features screen

**Note!**  This Advanced Chipset Features screen controls the configuration of the board's chipset for fine-tuning system performance. Screen options depend on the specific chipset. It is strongly recommended that only technical users make changes to the default settings.

- **Video Memory Size [32 M]**  
This item allows user to adjust VGA shared memory size.
- **Output Display [CRT]**  
This item allows the user to choose screen display type: "Flat Panel", "CRT" and "Panel & CRT". BIOS default value is set to "CRT".
- **Flat Panel Configuration [Press Enter] (Show Only)**  
This item provides flat panel adjustments.
- **Onboard USB1.1 [Enabled]**  
This item enables or disables motherboard USB1.1 device.
- **Onboard USB2.0 [Enabled]**  
This item enables or disables motherboard USB2.0 device.
- **Onboard IDE [Enabled]**  
This item enables or disables motherboard IDE device.

- **Memory Hole At 15 M-16 M [Disabled]**  
This item reserves 15 MB-16 MB memory address space to ISA expansion cards that specifically require the setting. Memory from 15 MB-16 MB will be unavailable to the system because only expansion cards can access memory in this area.
- **Overcurrent Reporting [Disabled]**  
This item enables or disables USB overcurrent reporting function. Suggest leaving on default setting (Disabled).
- **Port 4 assignment [Host]**  
This item allows user to change mode of USB port 4. The selections are "Host", "Device", or "Not Used".

## 3.6 Integrated Peripherals

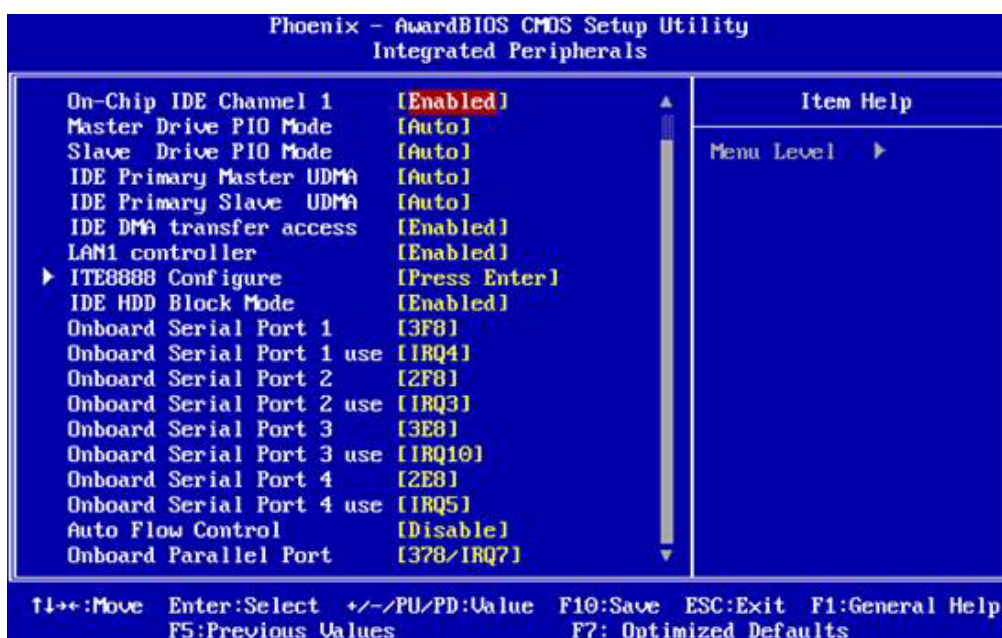


Figure 3.5 Integrated peripherals screen

- **IDE Master/Slave PIO/UDMA Mode,**  
IDE Master/Slave PIO/UDMA Mode (Auto) has a master and a slave, making two IDE devices possible. Because each IDE device may have a different Mode timing (0, 1, 2, 3, 4), it is necessary for these to be independent. The default setting "Auto" will allow auto detection to ensure optimal performance.
- **Master Drive PIO Mode [Auto]**  
This item allows user to adjust master IDE mode of type for modification purpose. Suggested BIOS default value is "Auto".
- **Slave Drive PIO Mode [Auto]**  
This item allows user to adjust slave IDE mode of type for modification purpose. Suggested BIOS default value is "Auto".
- **IDE Primary Master UDMA [Auto]**  
This item allows user to adjust primary master IDE mode of type for modification purpose. Suggested BIOS default value is "Auto".

- 
- **IDE Primary Slave UDMA [Auto]**  
This item allows adjustment of primary slave IDE mode or type for modification purposes. Suggested BIOS default value is "Auto".
  - **IDE DMA transfer access [Enabled]**  
This item allows adjustment of IDE DMA mode. Enabling increases IDE Data transfer speed. Suggested BIOS default value is "Enabled".
  - **LAN1 controller [Enabled]**  
This item enables/disables the onboard LAN switch.
  - **ITE8888 Configure [Press Enter]**  
This item allows user to make detailed ITE8888 adjustments.
  - **IDE HDD Block Mode [Enabled]**  
This item allows enabling or disabling IDE block data transfer mode. When enabled, it will speed up HDD data transfer of efficiency. Suggested BIOS default value is "Enabled".
  - **LPT/FDC switch: [Disabled]**  
This item enables/disables the LPT/FDC port switch. When enabled, it will change from LPT to FDC port. Suggested BIOS default value is "Disabled".
  - **Onboard Serial Port 1 [3F8]**  
This item allows user to change COM 1 address. Suggested BIOS default value is "3F8".
  - **Onboard Serial Port 1 use [IRQ4]**  
This item allows user to change COM 1 IRQ. Suggested BIOS default value is "IRQ4".
  - **Onboard Serial Port 2 [2F8]**  
This item allows user to change COM 2 address. Suggested BIOS default value is "2F8".
  - **Onboard Serial Port 2 use [IRQ3]**  
This item allows user to change COM 2 IRQ. Suggested BIOS default value is "IRQ3".
  - **Onboard Serial Port 3 [3E8]**  
This item allows user to change COM 3 address. Suggested BIOS default value is "3E8".
  - **Onboard Serial Port 3 use [IRQ10]**  
This item allows user to change COM 3 IRQ. Suggested BIOS default value is "IRQ10".
  - **Onboard Serial Port 4 [2E8]**  
This item allows user to change COM 4 address. Suggested BIOS default value is "2E8".
  - **Onboard Serial Port 4 use [IRQ5]**  
This item allows user to change COM 4 IRQ. Suggested BIOS default value is "IRQ5".
  - **Auto Flow Control [Disabled]**  
This item allows user to control COM port auto flow transfer. Suggested BIOS default value is "Disabled".
  - **Onboard Parallel Port [378/IRQ7]**  
This item allows user to change parallel port address. Suggested BIOS default value is "378/IRQ7".

- **Parallel Port Mode [Standard]**  
This item allows user to change parallel port mode. User can choose "SPP", "EPP", "ECP" and "ECP+EPP". SPP (Standard Parallel Port). ECP (Extended Capabilities Port). EPP (Enhanced Parallel Port). Suggested BIOS default value is "Normal".
- **ECP Mode Use DMA [3]**  
This selection is available only if you select iECP or iECP + EPP in the Parallel Port Mode field. In ECP Mode Use DMA, you can select DMA channel 1, DMA channel 3, or Disable. Leave this field on the default setting.

## 3.7 Power Management Setup

The power management setup controls the CPU card's green features to save power. The following screen shows the manufacturer's defaults:

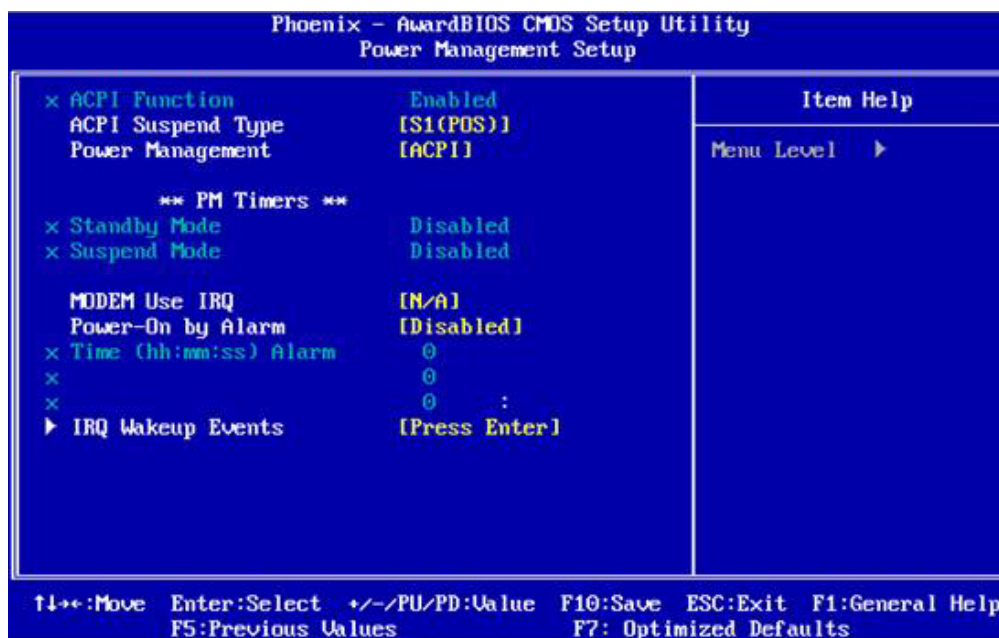


Figure 3.6 Power management setup screen

- **ACPI function**  
The choices: Enabled, Disabled.
- **ACPI Suspend Type**  
This item only support S1 function.
- **Power Management**  
This category allows you to select the type (or degree) of power saving and is directly related to the following modes:
  1. HDD Power Down
  2. Suspend Mode
 There are four selections for Power Management, three of which have fixed mode.
 

Settings

 This item determines delay time for the watchdog timer.  
 Min. Power Saving Minimum power management., Suspend Mode = 1 hr., and HDD Power Down = 15 min.

Max. Power Saving Maximum power management., Suspend Mode = 1 min., and HDD Power Down = 1 min.

User Defined (Default) Allows you to set each mode individually. When not disabled, each of the ranges are from 1 min. to 1 hr. except for HDD Power Down which ranges from 1 min. to 15 min. and disable.

- **Modem Use IRQ**

This determines the IRQ which the MODEM can use. The choices: 3, 4, 5, 7, 9, 10, 11, NA.

- **Power-On by Alarm [Disabled]**

This item allows users to power on the system at a specified date and time.

Disabled Disables this function.

Enabled Enables alarm function to power on system Day (of the month) Alarm 1-31 Time (HH:MM:SS) Alarm (0-23): (0-59): 0-59)

- **IRQ Wakeup Events [Press Enter]**

This item allows user to control wakeup from an IRQ event.

## 3.8 PnP/PCI Configurations

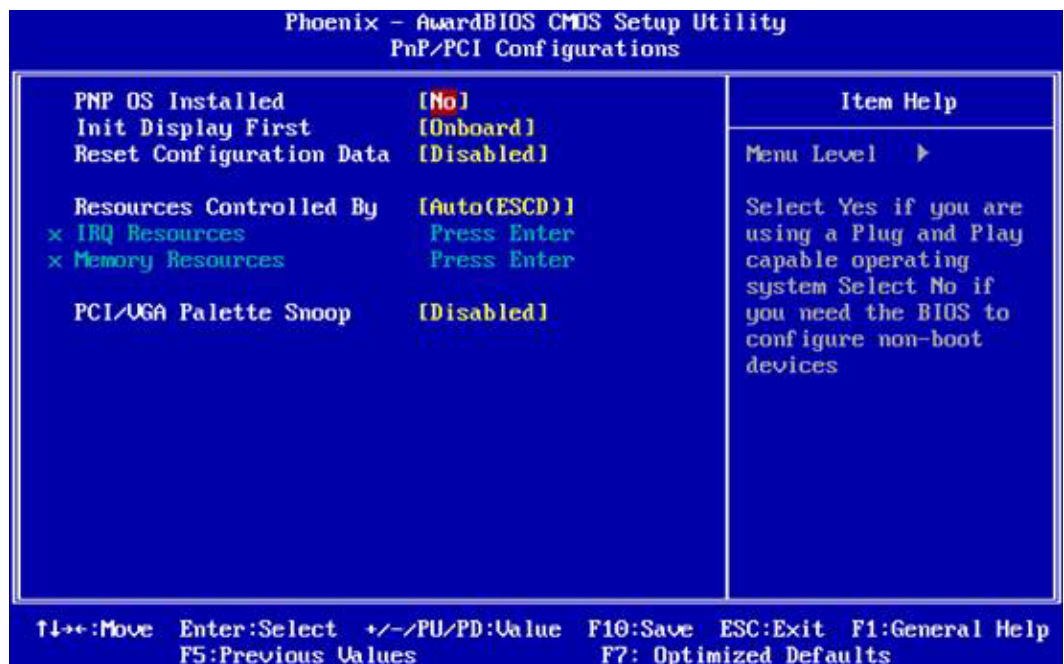


Figure 3.7 PnP/PCI configurations screen

- **PnP OS Installed**

Select Yes if you are using a plug and play capable operating system. Select No if you need the BIOS to configure non-boot device.

- **Init Display First [Onboard]**

This item allows user to change boot display sequence.

- **PNP OS Installed [No]**

Usually best set to No. Some rare cases may need to set to Yes.

- **Reset Configuration Data [Disabled]**

This item allows user to clear any PnP configuration data stored in the BIOS.

- **Resources Controlled By [Auto (ESCD)]**
  - IRQ Resources  
This item allows you respectively to assign interrupt types for IRQ-3, 4, 5, 7, 9,10, 11,12, 14, and 15.
  - Memory Resources  
This item allows you respectively to assign memory blocks from N/A to DC00.
- **PCI VGA Palette Snoop [Disabled]**  
The item is designed to solve problems caused by some non-standard VGA cards. A built-in VGA system does not need this function.

## 3.9 PC Health Status

This is to check the PC health, e.g.: current CPU temperature.

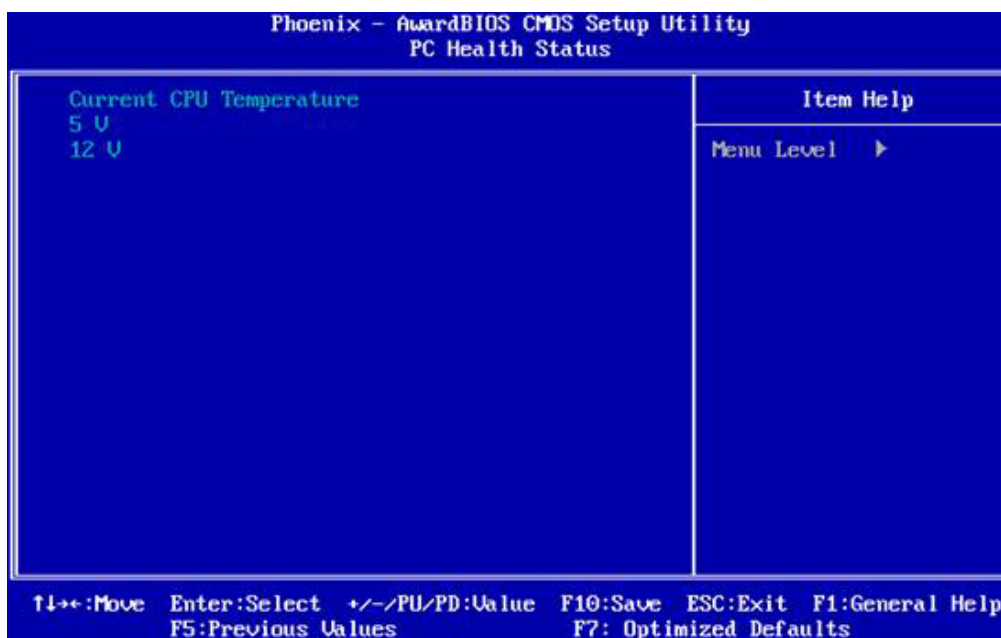


Figure 3.8 PC health status screen

- **Current CPU Temp [Show Only]**  
This item displays current system and CPU temperature.
- **5 V / 12 V [Show Only]**  
This item displays current CPU and system Voltage.

## 3.10 Load Optimized Defaults

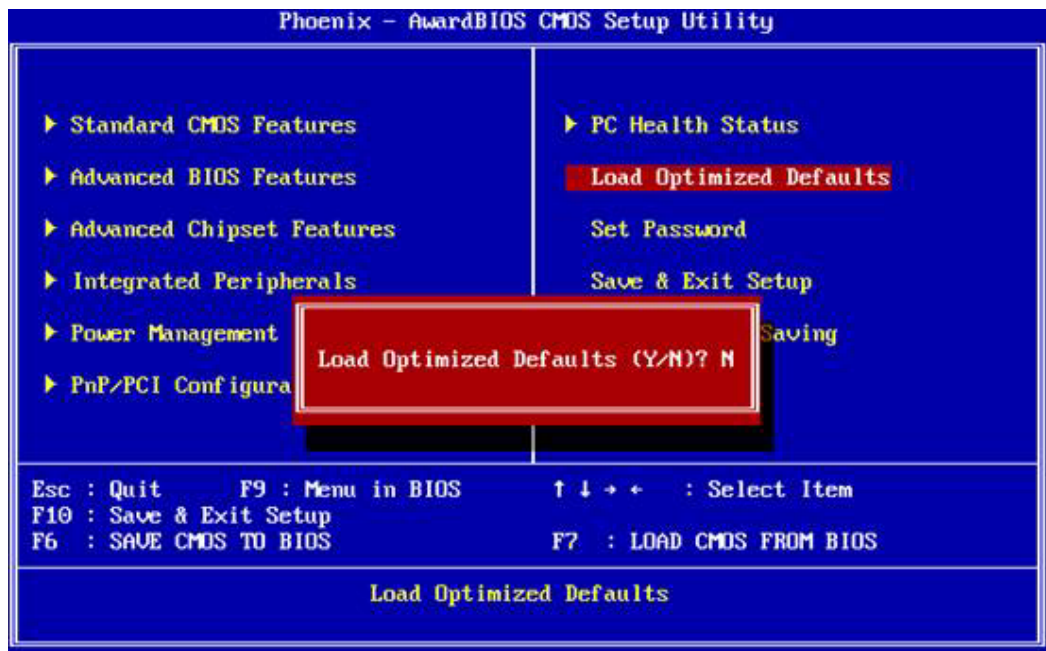


Figure 3.9 Load optimized defaults screen

The PCM-3353 automatically configures all setup items to optimal settings when you select this option. Optimal Defaults are designed for maximum system performance, but may not work best for all computer applications. In particular, do not use the Optimal Defaults if your computer is experiencing system configuration problems. Select Load Optimal Defaults from the Exit menu and press <Enter>.

## 3.11 Password Setting

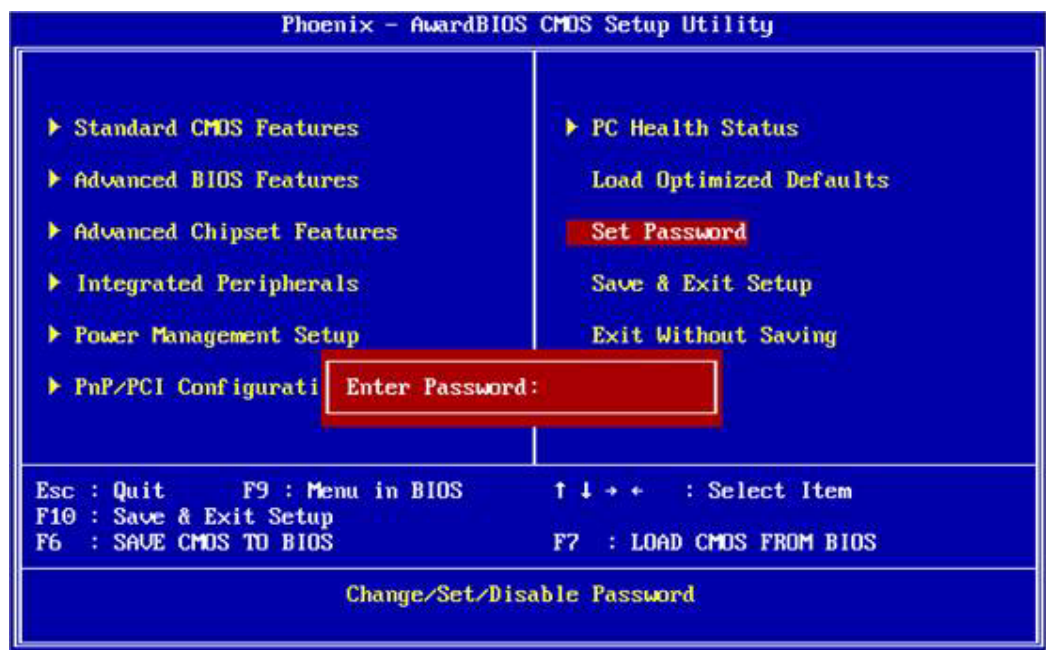


Figure 3.10 Password setting screen



To change the password:

1. Choose the "Set Password" option from the "Initial Setup Screen" menu and press <Enter>. The screen will display the following message.  
Press <Enter>.
2. If the CMOS is good or if this option has been used to change the default password, the user is asked for the password stored in the CMOS. The screen will display the following message:  
Enter the current password and press <Enter>.
3. After pressing <Enter> (ROM password) or the current password (user-defined), you can change the password stored in the CMOS. The password must be no longer than eight (8) characters.  
Remember, to enable the password setting feature, you must first select either "Setup" or "System" from the "Advanced BIOS Features" menu.

## 3.12 Save & Exit Setup

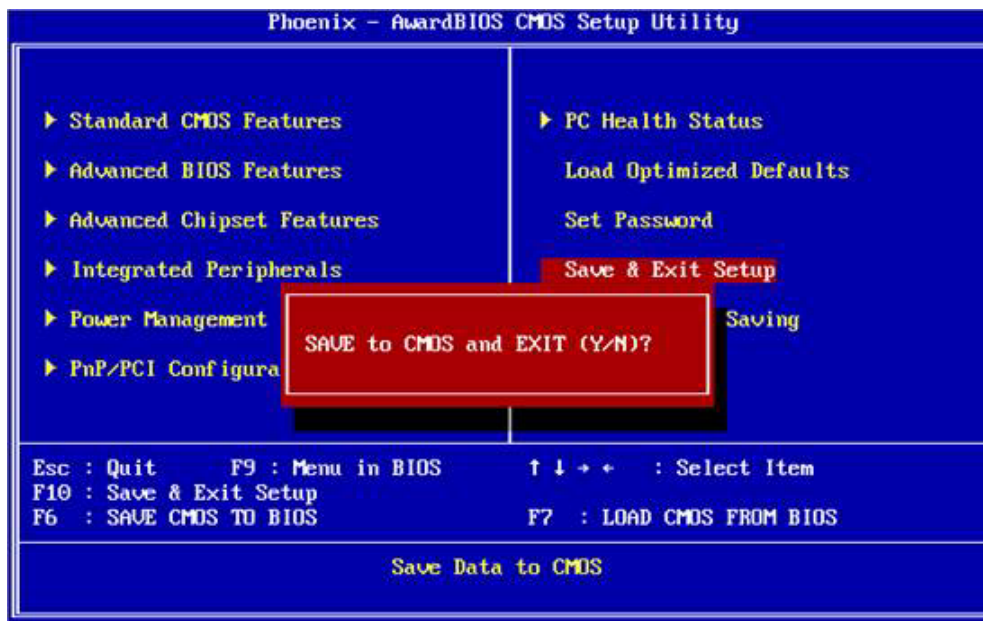


Figure 3.11 Save & exit setup screen

If you select this and press <Enter>, the values entered in the setup utilities will be recorded in the CMOS memory of the chipset. The microprocessor checks this every time you turn your system on and compares this to what it finds as it checks the system.

This record is required for the system to operate.

### 3.13 Exit without Saving

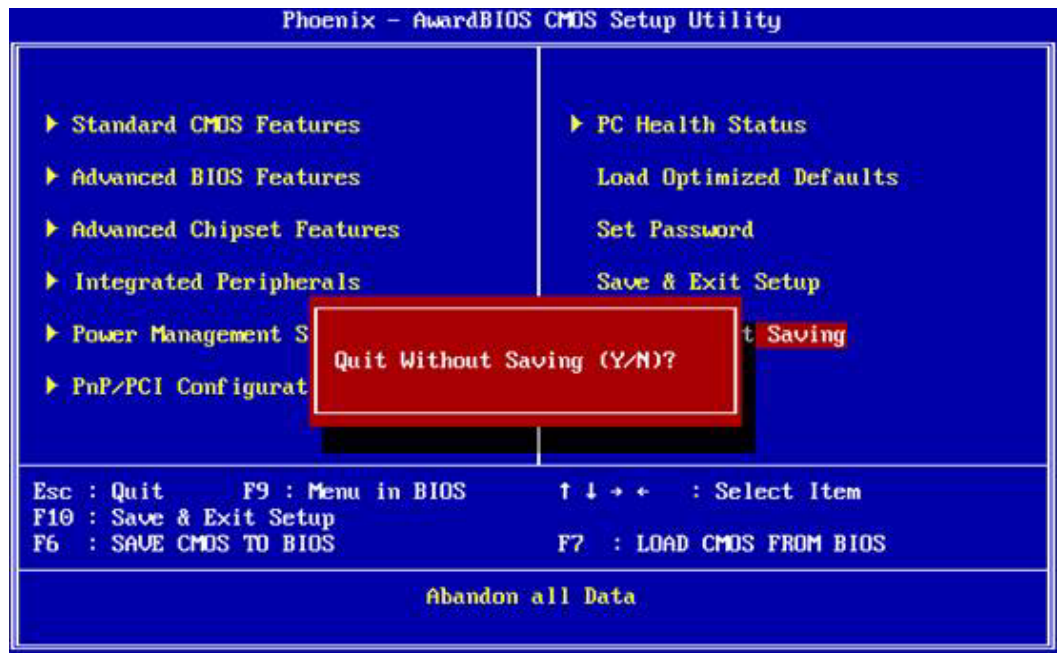


Figure 3.12 Exit without saving screen

Selecting this option and pressing <Enter> lets you exit the setup program without recording any new values or changing old ones.

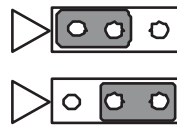
# Appendix **A**

## Pin Assignments

This appendix contains information of a detailed or specialized nature.

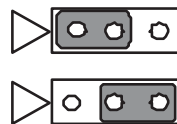
## A.1 Jumper and Connector Tables

**Table A.1: SW1, CF Master / Slave Selector**



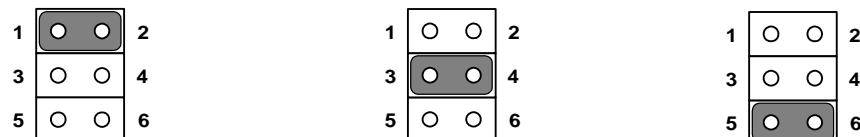
Part Number	160000071
Footprint	JH2X1V-2M
Description	PIN HEADER 2*1P 180D (M)SQUARE 2.0mm
Setting	Function
(1 - 2)	Master (default)
(2 - 3)	Slave

**Table A.2: J3, Clear CMOS**



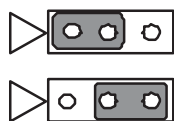
Part Number	1653003101
Footprint	JH3X1V-2M
Description	PIN HEADER 3*1P 180D (M)SQUARE 2.0mm
Setting	Function
(1 - 2)	BAT (default)
(2 - 3)	Clear-CMOS

**Table A.3: CN39, COM2 Setting**



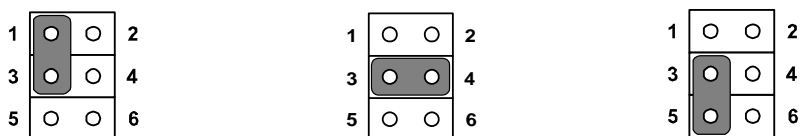
Part Number	1653003201
Footprint	JH3X2S-2M
Description	PIN HEADER 3*2P 180D SMDMALE SQUARE PIN 2.0mm
Setting	Function
(1 - 2)	RS232 (default)
(3 - 4)	RS485
(5 - 6)	RS422

**Table A.4: J5, PCI V/I/O POWER**



Part Number	1653003101
Footprint	JH3X1V-2M
Description	PIN HEADER 3*1P 180D (M)SQUARE 2.0mm
Setting	Function
(1 - 2)	With +5 V
(2 - 3)	With +3.3 V (default)

**Table A.5: J6, LVDS Power Selector**



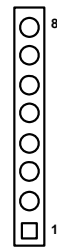
Part Number	1653003260
Footprint	HD_3x2P_79
Description	PIN HEADER 3*2P 180D (M) 2.0mm SMD SQUARE PIN
Setting	Function
(1 - 3)	+3.3 V (default)
(3 - 4)	+12 V
(3 - 5)	+5 V

**Table A.6: CN42, LVDS LCD I/F**

Part Number	1653910261		
Footprint	SPH10x2		
Description	*CONN. DF13-20DP-1.25V		
Pin	Pin Name	Signal Type	Signal Level
1	GND	GND	
2	GND	GND	
3	D0+	I/O	
4	NONE		
5	D0-	I/O	
6	NONE		
7	D1+	I/O	
8	NONE		
9	D1-	I/O	
10	NONE		
11	D2+	I/O	

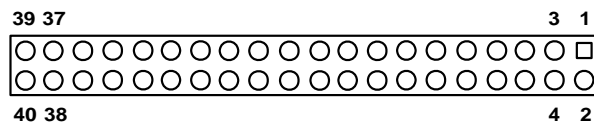
12	NONE		
13	D2-	I/O	
14	NONE		
15	CLK+	I/O	
16	D3+		
17	CLK-	I/O	
18	D3-		
19	+12 V/+5 V/+3.3 V	PWR	+12 V/+5 V/+3.3 V
20	+12 V/+5 V/+3.3 V	PWR	+12 V/+5 V/+3.3 V

**Table A.7: CN38, Power Input**



Part Number	1655308020		
Footprint	PWR-B4PV		
Description	PIN HEADER DIP 8*1P 180D(M) 2.00mm		
Pin	Pin Name	Signal Type	Signal Level
1	+5 V	PWR	+5 V
2	+5 V	PWR	+5 V
3	+5 V	PWR	+5 V
4	GND	GND	-
5	GND	GND	-
6	GND	GND	-
7	GND	GND	-
8	+12 V	PWR	+12 V

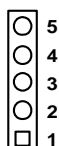
**Table A.8: CN4, TFT LCD I/F**



Part Number	1653920200		
Footprint	SPH20X2		
Description	*CONN. DF13-40DP-1.25V		
Pin	Pin Name	Signal Type	Signal Level
1	+5 V	PWR	+5 V
2	+5 V	PWR	+5 V
3	GND	GND	-
4	GND	GND	-
5	+3.3 V	PWR	+3.3 V

6	+3.3 V	PWR	+3.3 V
7	TV-CLK	CLK48M	+3.3 V
8	GND	GND	-
9	D0	I/O	+3.3 V
10	D1	I/O	+3.3 V
11	D2	I/O	+3.3 V
12	D3	I/O	+3.3 V
13	D4	I/O	+3.3 V
14	D5	I/O	+3.3 V
15	D6	I/O	+3.3 V
16	D7	I/O	+3.3 V
17	D8	I/O	+3.3 V
18	D9	I/O	+3.3 V
19	D10	I/O	+3.3 V
20	D11	I/O	+3.3 V
21	D12	I/O	+3.3 V
22	D13	I/O	+3.3 V
23	D14	I/O	+3.3 V
24	D15	I/O	+3.3 V
25	D16	I/O	+3.3 V
26	D17	I/O	+3.3 V
27	D18	I/O	+3.3 V
28	D19	I/O	+3.3 V
29	D20	I/O	+3.3 V
30	D21	I/O	+3.3 V
31	D22	I/O	+3.3 V
32	D23	I/O	+3.3 V
33	GND	GND	-
34	GND	GND	-
35	DOTCLK	CLK	+3.3 V
36	VS	OUT	+3.3 V
37	DE	I/O	+3.3 V
38	HS	OUT	+3.3 V
39	RST	OUT	+3.3 V
40	FP	OUT	+3.3 V

**Table A.9: CN5, Inverter Power**



Part Number	1655305020		
Footprint	WHL5V-2M		
Description	WAFER BOX 2.0mm 5P 180D MALE W/LOCK		
Pin	Pin Name	Signal Type	Signal Level
1	+12V	PWR	+12V

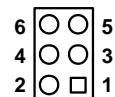
2	GND	GND	-
3	ENABKL	OUT	+3.3V
4	VBR	OD	+3.3V
5	+5V	PWR	+5V

**Table A.10: CN6, SMBus**



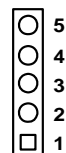
Part Number	1653002101		
Footprint	JH2X1V-2M		
Description	PIN HEADER 2*1P 180D (M)SQUARE 2.0mm		
Pin	Pin Name	Signal Type	Signal Level
1	SMB-CLK	CLK	+3 V
2	SMB-DAT	I/O	+3 V

**Table A.11: CN32, Reset / Buzzer pin header**



Part Number	1653002201		
Footprint	WHL2V-2M		
Description	PIN HEADER DIP 2*2P 180D(M) 2.00mm		
Pin	Pin Name	Signal Type	Signal Level
1	-	-	-
2	-	-	-
3	GND	GND	-
4	RST	IN	+3.3 V
5	Buzzer -	-	-
6	Buzzer +	-	-

**Table A.12: CN36, GPIO1**



Part Number	1653010100		
Footprint	JH5X2S-2M		
Description	PIN HEADER SMD 5*1P 180D(M) 2.54mm		
Pin	Pin Name	Signal Type	Signal Level
1	+5V	PWR	+5 V



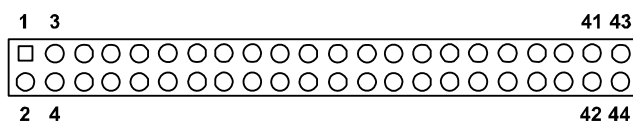
2	GPIO0	I/O	+5 V
3	GPIO1	I/O	+5 V
4	GPIO2	I/O	+5 V
5	GPIO3	I/O	+5 V

**Table A.13: CN37, GPIO2**



Part Number	1653010100		
Footprint	JH5X2S-2M		
Description	PIN HEADER SMD 5*1P 180D(M) 2.54mm		
Pin	Pin Name	Signal Type	Signal Level
1	GPIO4	I/O	+5 V
2	GPIO5	I/O	+5 V
3	GPIO6	I/O	+5 V
4	GPIO7	I/O	+5 V
5	GND	-	-

**Table A.14: CN11, IDE**



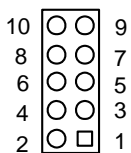
Part Number	1653222262		
Footprint	BH22X2SV		
Description	BOX HEADER SMD 22*2P 180D(M) 2.0mm IDIOT-PROOF		
Pin	Pin Name	Signal Type	Signal Level
1	RST#	Out	+5 V
2	GND	GND	-
3	D7	I/O	+5 V
4	D8	I/O	+5 V
5	D6	I/O	+5 V
6	D9	I/O	+5 V
7	D5	I/O	+5 V
8	D10	I/O	+5 V
9	D4	I/O	+5 V
10	D11	I/O	+5 V
11	D3	I/O	+5 V
12	D12	I/O	+5 V
13	D2	I/O	+5 V
14	D13	I/O	+5 V
15	D1	I/O	+5 V

16	D14	I/O	+5 V
17	D0	I/O	+5 V
18	D15	I/O	+5 V
19	GND	GND	-
21	DREQ	Out	+5 V
22	GND	GND	-
23	IOW#	Out	+5 V
24	GND	GND	-
25	IOR#	Out	+5 V
26	GND	GND	-
27	IRDY	Out	+5 V
28	CSEL#	Out	+5 V
29	DACK#	Out	+5 V
30	GND	GND	-
31	IRQ14	In	+5 V
32	NC	-	-
33	A1	In	+5 V
34	D66DET#	In	+5 V
35	A0	In	+5 V
36	A2	In	+5 V
37	CS#1	Out	+5 V
38	CS#3	Out	+5 V
39	ASP#	Out	+5 V
40	GND	GND	-
41	+5 V	PWR	+5 V
42	+5 V	PWR	+5 V
43	GND	GND	-
44	NC	-	-

**Table A.15: CN27, CRT**

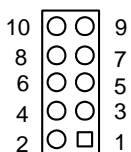
Part Number	1655912120		
Footprint	DBVGA-VF5M		
Description	CONN. 12P 90D(F) SMD 1.25mm		
Pin	Pin Name	Signal Type	Signal Level
1	GND	GND	-
2	R	OUT	Analog
3	G	OUT	Analog
4	B	OUT	Analog
5	GND	GND	-
6	+5 V	PWR	-
7	DDAT	OD I/O	+3.3 V
8	DCLK	OD I/O	+3.3 V
9	GND	GND	-
10	HSYNC	OUT	+3.3 V
11	VSYSNC	OUT	+3.3 V
12	GND	-	-

**Table A.16: CN15, USB1/2**



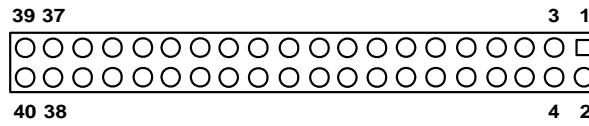
Part Number	1653005260		
Footprint	JH5X2S-2M		
Description	PIN HEADER 5*2P 180D(M) 2.0mm SMD IDIOT-PROOF		
Pin	Pin Name	Signal Type	Signal Level
1	+5 V	PWR	+5 V
2	+5 V	PWR	+5 V
3	P0-	I/O	USB
4	P1-	I/O	USB
5	P0+	I/O	USB
6	P1+	I/O	USB
7	GND	GND	-
8	GND	GND	-
9	GND	GND	-
10	NC	-	-

**Table A.17: CN17, USB3/4**



Part Number	1653005260		
Footprint	JH5X2S-2M		
Description	PIN HEADER 5*2P 180D(M) 2.0mm SMD IDIOT-PROOF		
Pin	Pin Name	Signal Type	Signal Level
1	+5 V	PWR	+5 V
2	+5 V	PWR	+5 V
3	P2-	I/O	USB
4	P3-	I/O	USB
5	P2+	I/O	USB
6	P3+	I/O	USB
7	GND	GND	-
8	GND	GND	-
9	GND	GND	-
10	NC	-	-

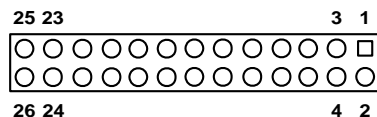
**Table A.18: CN30, COM1/2/3/4**



Pin	Pin Name	Signal Type	Signal Level
1	DCD#1	IN	-3 ~ -12 V, +3 ~ +12 V
2	DSR#1	IN	-3 ~ -12 V, +3 ~ +12 V
3	RXD1	IN	-3 ~ -12 V, +3 ~ +12 V
4	RTS#1	I/O	-3 ~ -12 V, +3 ~ +12 V
5	TXD1	OUT	-3 ~ -12 V, +3 ~ +12 V
6	CTS#1	IN	-3 ~ -12 V, +3 ~ +12 V
7	DTR#1	I/O	-3 ~ -12 V, +3 ~ +12 V
8	RI#1	IN	-3 ~ -12 V, +3 ~ +12 V
9	GND	GND	-
10	GND	GND	-
11	DCD#2	In	-3~-12V, +3~+12V
12	DSR#2	In	-3~-12V, +3~+12V
13	RXD2	In	-3~-12V, +3~+12V
14	RTS#2	I/O	-3~-12V, +3~+12V
15	TXD2	Out	-3~-12V, +3~+12V
16	CTS#2	In	-3~-12V, +3~+12V
17	DTR#2	I/O	-3~-12V, +3~+12V
18	RI#2	In	-3~-12V, +3~+12V
19	GND	GND	-
20	GND	GND	-
21	DCD#3	In	-3 ~ -12 V, +3 ~ +12 V
22	DSR#3	In	-3 ~ -12 V, +3 ~ +12 V
23	RXD3	In	-3 ~ -12 V, +3 ~ +12 V
24	RTS#3	I/O	-3 ~ -12 V, +3 ~ +12 V
25	TXD3	Out	-3 ~ -12 V, +3 ~ +12 V
26	CTS#3	In	-3 ~ -12 V, +3 ~ +12 V
27	DTR#3	I/O	-3 ~ -12 V, +3 ~ +12 V
28	RI#3	In	-3 ~ -12 V, +3 ~ +12 V
29	GND	GND	-
30	GND	GND	-
31	DCD#4	In	-3 ~ -12 V, +3 ~ +12 V
32	DSR#4	In	-3 ~ -12 V, +3 ~ +12 V
33	RXD4	In	-3 ~ -12 V, +3 ~ +12 V
34	RTS#4	I/O	-3 ~ -12 V, +3 ~ +12 V
35	TXD4	Out	-3 ~ -12 V, +3 ~ +12 V
36	CTS#4	In	-3 ~ -12 V, +3 ~ +12 V
37	DTR#4	I/O	-3 ~ -12 V, +3 ~ +12 V
38	RI#4	In	-3 ~ -12 V, +3 ~ +12 V

39	GND	GND	-
40	GND	-	-

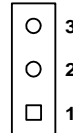
**Table A.19: CN19, Print Port**



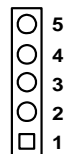
Part Number	1653213260		
Footprint	BH13x2SV-2.00		
Description	BOX HEADER SMD 13*2P 180D(M) 2.0mm		
Pin	Pin Name	Signal Type	Signal Level
1	STB#	Out	+5 V
2	AFD#	Out	+5 V
3	PD0	I/O	+5 V
4	ERR#	In	+5 V
5	PD1	I/O	+5 V
6	INIT#	Out	+5 V
7	PD2	I/O	+5 V
8	SLIN#	Out	+5 V
9	PD3	I/O	+5 V
10	GND	GND	-
11	PD4	I/O	+5 V
12	GND	GND	-
13	PD5	I/O	+5 V
14	GND	GND	-
15	PD6	I/O	+5 V
16	GND	GND	-
17	PD7	I/O	+5
18	GND	GND	-
19	ACK#	In	+5 V
20	GND	GND	-
21	BUSY	In	+5 V
22	GND	GND	-
23	PE	In	+5 V
24	GND	GND	-
25	SLCT	In	+5 V
26	NC	-	-

**Table A.20: CN20, RS422/485**

Part Number	1653004101		
Footprint	JH4X1V-2M		
Description	PIN HEADER 4*1P 180D(M) SQUARE 2.0mm		
Pin	Pin Name	Signal Type	Signal Level
1	422-RXD-	In	+5 V
2	422-RXD+	In	+5 V
3	485-422-TXD+	Out	+5 V
4	485-422-TXD-	Out	+5 V

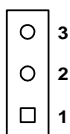
**Table A.21: CN35, AUDIO-OUT**

Part Number	1655303120		
Footprint	WHL3V-2M		
Description	WAFER BOX 2.0mm 3P 180D w/LOCK		
Pin	Pin Name	Signal Type	Signal Level
1	LIN-OUT-R	OUT	Analog
2	GND	GND	-
3	LIN-OUT-L	Out	Analog

**Table A.22: CN34, AUDIO-IN**

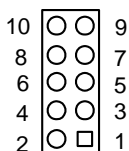
Part Number	1653005020		
Footprint	WHL3V-2M		
Description	WAFER BOX 2.0 mm 5P 180D w/LOCK		
Pin	Pin Name	Signal Type	Signal Level
1	LIN-IN-R	IN	Analog
2	GND	GND	-
3	LIN-IN-L	IN	Analog
4	GND	GND	-
5	MIC-IN	IN	Analog

**Table A.23: CN23, ISA -5V & -12V Input**

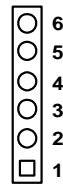


Part Number	1653003101		
Footprint	JH3X1V-2M		
Description	PIN HEADER 3*1P 180D (M)SQUARE 2.0 mm		
Pin	Pin Name	Signal Type	Signal Level
1	-12 V	PWR	-12 V
2	-5 V	PWR	-5 V
3	GND	GND	-

**Table A.24: CN26, LAN1**



Part Number	1653205260		
Footprint	BH5X2SV		
Description	BOX HEADER SMD 5*2 180D (M) 2.0 mm		
Pin	Pin Name	Signal Type	Signal Level
1	+3.3 V	PWR	+3.3 V
2	LAN2-ACTLED	IN	Analog
3	LAN2-RX+	IN	Analog
4	LAN2-RX-	IN	Analog
5	LAN2-LILED	IN	Analog
6	LAN2-LCT	I/O	Analog
7	N/A	-	-
8	LAN2-LCT	I/O	Analog
9	LAN2-TX+	OUT	Analog
10	LAN2-TX-	OUT	Analog

**Table A.25: CN18, KB/MS**

Part Number	1655306020		
Footprint	BH5X2SV		
Description	BOX HEADER DIP 6*1 180D (M) 2.0 mm		
Pin	Pin Name	Signal Type	Signal Level
1	KB-CLK	IN	+5 V
2	KB-DATA	IN	+5 V
3	MS-CLK	IN	+5 V
4	GND	PWR	-
5	+5 V	PWR	+5 V
6	MS-DATA	IN	+5 V

**Table A.26: CN40, DDR RAM SOCKET**

Part Number	1651000051
Footprint	
Description	SODIMM 200P DDR SMD

**Table A.27: CN41, CF SOCKET**

Part Number	1653025211
Footprint	JH5X2S-2M
Description	HEADER 50P 90D

**Table A.28: CN33, Battery Connector**

Part Number	1655902032		
Footprint	WHL2V-125		
Description	WAFER 2P 180D(M) 1.25 mm 53047-0210		
Pin	Pin Name	Signal Type	Signal Level
1	+VBAT	PWR	+3.3 V
2	GND	GND	+5 V



# Appendix **B**

## System Assignments

This appendix contains information of a detailed nature.

## B.1 System I/O Ports

**Table B.1: System I/O Ports**

Addr. range (Hex)	Device
000-01F	DMA controller
020-021	Interrupt controller 1, master
040-05F	8254 timer
060-06F	8042 (keyboard controller)
070-07F	Real-time clock, non-maskable interrupt (NMI) mask
080-09F	DMA page register
0A0-0BF	Interrupt controller 2
0C0-0DF	DMA controller
0F0	Clear math co-processor
0F1	Reset math co-processor
0F8-0FF	Math co-processor
1F0-1F8	Fixed disk
200-207	Reserved (Game I/O)
278-27F	Reserved (Parallel port 2, LTP3)
2E8-2EF	Reserved (Series port 4)
2F8-2FF	Serial port 2
300-31F	Prototype card
360-36F	Reserved
378-37F	Parallel printer port 1 (LPT 2)
380-38F	SDLC, bisynchronous 2
3A0-3AF	Bisynchronous 1
3B0-3BF	Monochrome display and printer adapter (LPT1)
3C0-3CF	Reserved
3D0-3DF	Color/graphics monitor adapter
3E8-3EF	Reserved (Series port 3)
3F0-3F7	Diskette controller
3F8-3FF	Serial port 1

\* PNP audio I/O map range from 220 ~ 250H (16 bytes)  
MPU-401 select from 300 ~ 330H (2 bytes)

## B.2 1st MB Memory Map

**Table B.2: 1st MB Memory Map**

Addr. range (Hex)	Device
F0000h - FFFFFh	System ROM
*CC000h - EFFFFh	Unused (reserved for Ethernet ROM)
C0000h - CBFFFh	Expansion ROM (for VGA BIOS)
B8000h - BFFFFh	CGA/EGA/VGA text
B0000h - B7FFFh	Unused
A0000h - AFFFFh	EGA/VGA graphics
00000h - 9FFFFh	Base memory

**Table B.2: 1st MB Memory Map**

Addr. range (Hex)	Device
* If Ethernet boot ROM is disabled (Ethernet ROM occupies about 16 KB)	
* E0000 - EFFFF is reserved for BIOS POST	

## B.3 DMA Channel Assignments

**Table B.3: DMA Channel Assignments**

Channel	Function
0	Available
1	Available (audio)
2	Floppy disk (8-bit transfer)
3	Available (parallel port)
4	Cascade for DMA controller 1
5	Available
6	Available
7	Available

\* Audio DMA select 1, 3, or 5

\*\* Parallel port DMA select 1 (LPT2) or 3 (LPT1)

## B.4 Interrupt Assignments

**Table B.4: Interrupt Assignments**

Interrupt#	Interrupt source
IRQ 0	Interval timer
IRQ 1	Keyboard
IRQ 2	Interrupt from controller 2 (cascade)
IRQ 3	COM2
IRQ 4	COM1
IRQ 5	Reserved (COM4)
IRQ 6	FDD
IRQ 7	LPT1
IRQ 8	RTC
IRQ 9	Reserved (audio)
IRQ 10	Reserved (COM3)
IRQ 11	Reserved for watchdog timer
IRQ 12	PS/2 mouse
IRQ 13	INT from co-processor
IRQ 14	Primary IDE
IRQ 15	Secondary IDE for CFC

\* Ethernet interface IRQ select: 9, 11, 15

\* PNP audio IRQ select: 9, 11, 15

\* PNP USB IRQ select: 9, 11, 15

\* PNP ACPI IRQ select: 9, 11, 15



# Appendix **C**

## Watchdog Timer Sample Code

## C.1 Watchdog Function

```
;The SCH3114 Runtime base I/O address is 800h
;Setting WatchDog time value location at offset 66h
;If set value "0", it is mean disable WatchDog function.
Superio_GPIO_Port = 800h
mov dx,Superio_GPIO_Port + 66h
mov al,00h
out dx,al
.model small
.486p
.stack 256
.data
SCH3114_IO EQU 800h
.code
org 100h
.STARTUp
;=====
;47H
;enable WDT function bit [0]=0Ch
;=====
mov dx,SCH3114_IO + 47h
mov al,0Ch
out dx,al
;=====
;65H
;bit [1:0]=Reserved
;bit [6:2]Reserve=00000
;bit [7] WDT time-out Value Units Select
;Minutes=0 (default) Seconds=1
;=====
mov dx,SCH3114_IO + 65h ;
mov al,080h
out dx,al
;=====
;66H
;WDT timer time-out value
;bit[7:0]=0~255
;=====
mov dx,SCH3114_IO + 66h
mov al,01h
out dx,al
;=====
;bit[0] status bit R/W
;WD timeout occurred =1
;WD timer counting = 0
```

```
=====
mov dx,SCH3114_IO + 68h
mov al,01h
out dx,al
.exit
END
```





# Appendix **D**

## GPIO Sample Code

## D.1 GPIO Sample Code

```
=====
====
    NEWIODELAY Macro
        out 0ebh,al
    ENDM
=====
====

    .model small
    .486p
    .stack 256
    .data

=====
====
;           Data Area
=====
====
    SMBus_Port    EQU 6000h
    PCA9555_ID    EQU 4Eh
    Input_Reg     EQU 00h
    Output_Reg    EQU 01h
    Inversion_Reg EQU 02h
    Configure_Reg EQU 03h
    Advantech_Str db 'Advantech Company Copyright (C) 2005 Design by Duncan',0Ah,0Dh,$'
    Advantech_Str db 'Advantech Company Copyright (C) 2005 Design by Duncan, Modify by Steven',0Ah,0Dh,$'
    GX3_Fun_Str   db 'Check Philip GPIO function.',0Ah,0Dh,$'
    Note1_Str     db 'Test Method: GPIO 0 connect to GPIO 1.',0Ah,0Dh,$'
    Note2_Str     db '           GPIO 2 connect to GPIO 3.',0Ah,0Dh,$'
    Note3_Str     db '           GPIO 4 connect to GPIO 5.',0Ah,0Dh,$'
    Note4_Str     db '           GPIO 6 connect to GPIO 7.',0Ah,0Dh,$'
    Success1_Str  db 'First GPIO Chip Test success !! ',0Ah,0Dh,$'
    Success2_Str  db 'Second GPIO Chip Test success !! ',0Ah,0Dh,$'
    Success_lengt EQU ($ - offset Success1_Str) / 2
                db 'Third GPIO Chip Test success !! ',0Ah,0Dh,$'
                db 'Fouth GPIO Chip Test success !! ',0Ah,0Dh,$'
                db 'Fifth GPIO Chip Test success !! ',0Ah,0Dh,$'
                db 'Sixth GPIO Chip Test success !! ',0Ah,0Dh,$'
                db 'Seventh GPIO Chip Test success !! ',0Ah,0Dh,$'
                db 'Eighth GPIO Chip Test success !! ',0Ah,0Dh,$'
    Fail_Str      db 'First GPIO Chip Test Fail !! ',0Ah,0Dh,$'
    Fail2_Str     db 'Second GPIO Chip Test Fail !! ',0Ah,0Dh,$'
    Fail_lengt    EQU ($ - offset Fail_Str) / 2
                db 'Third GPIO Chip Test Fail !! ',0Ah,0Dh,$'
                db 'Fouth GPIO Chip Test Fail !! ',0Ah,0Dh,$'
```

```

                db 'Fifth GPIO Chip Test Fail !! ',0Ah,0Dh,'$'
                db 'Sixth GPIO Chip Test Fail !! ',0Ah,0Dh,'$'
                db 'Seventh GPIO Chip Test Fail !! ',0Ah,0Dh,'$'
                db 'Eighth GPIO Chip Test Fail !! ',0Ah,0Dh,'$'
Error_Str1     db 'Error !! The system has no GPIO Chip or no support INT15
hook! ',0Ah,0Dh,'$'

;=====
====
;           Main Program Start
;=====
====

.code
        org 100h
.STARTUp
        ;Clear Screen
        pusha
        lea dx, Advantech_Str
        mov ah,09h
        int 21h
        lea dx, GX3_Fun_Str
        mov ah,09h
        int 21h
        lea dx, Note1_Str
        mov ah,09h
        int 21h
        lea dx, Note2_Str
        mov ah,09h
        int 21h
        lea dx, Note3_Str
        mov ah,09h
        int 21h
        lea dx, Note4_Str
        mov ah,09h
        int 21h

;=====
====
;   Get Number of GPIO group
;   one group mean 8 gpio pins(one GPIO Chip)
; Input:
;   ax=5E87h
;   bh=00h
; output:
;   ax=5E78      ;function success, other value means function fail
;   cl= n group of gpio

```

```

=====
====

;
; Get GPIO Config
; Input:
;   ax=5E87h
;   bh=01h
;   cl= n ; n means which group of GPIO you want to get
; output:
;   ax=5E78      ;function success, other value means function fail
;   bl= the n group of gpio config
;   bit 0 = gpio 0 , 0 => output pin; 1 => input pin
;   bit 1 = gpio 1 , 0 => output pin; 1 => input pin
;   .....
;   bit 7 = gpio 7 , 0 => output pin; 1 => input pin
=====
====

;
; Set GPIO Config
; Input:
;   ax=5E87h
;   bh=02h
;   cl= n ; n means which group of GPIO you want to set
;   bl= the n group of gpio config
;   bit 0 = gpio 0 , 0 => output pin; 1 => input pin
;   bit 1 = gpio 1 , 0 => output pin; 1 => input pin
;   .....
;   bit 7 = gpio 7 , 0 => output pin; 1 => input pin
; output:
;   ax=5E78      ;function success, other value means function fail
=====
====

;
; Get GPIO status
; Input:
;   ax=5E87h
;   bh=03h
;   cl= n ; n means which group of GPIO you want to get
; output:
;   ax=5E78      ;function success, other value means function fail

```

```

; bl= the n group of gpio status
; bit 0 = gpio 0 , 0 => Low; 1 => High
; bit 1 = gpio 1 , 0 => Low; 1 => High
; .....
; bit 7 = gpio 7 , 0 => Low; 1 => High
;=====
=====

;=====
=====
; Set GPIO status
; Input:
; ax=5E87h
; bh=04h
; cl= n ; n means which group of GPIO you want to set
; bl= the n group of gpio status
; bit 0 = gpio 0 , 0 => Low; 1 => High
; bit 1 = gpio 1 , 0 => Low; 1 => High
; .....
; bit 7 = gpio 7 , 0 => Low; 1 => High
; output:
; ax=5E78 ;function success, other value means function fail
;=====
=====
    mov ax,5e87h
    mov bh,00h
    int 15h
    cmp ax,5e78h
    je next_test

    lea dx, Error_Str1
    mov ah,09h
    int 21h
    jmp Finish_Test
next_test:
    xor ch,ch
    push cx ;save NO. of GPIO chip
;1.Set GPIO 0,2,4,6 as output, GPI 1,3,5,7 as input
    mov ax,5e87h
    mov bx,02aah
    int 15h
;2. Set GPIO 0,2,4,6 Output Low
    pop cx ;restore NO. of GPIO chip
    push cx ;save NO. of GPIO chip
    mov ax,5e87h
    mov bx,0400h

```

```

int 15h
;3. Check GPI 1,3,5,7 value
pop cx ;restore NO. of GPIO chip
push cx ;save NO. of GPIO chip
mov ax,5e87h
mov bx,03FFh
int 15h

pop cx ;restore NO. of GPIO chip
push cx ;save NO. of GPIO chip
dec cx

mov al,Fail_lenght
mul cl
lea dx, Fail_Str
add dx,ax
cmp bl,00
jne test_result

;4. Set GPIO 0,2,4,6 Output differential
pop cx ;restore NO. of GPIO chip
push cx ;save NO. of GPIO chip
mov ax,5e87h
mov bx,0411h
int 15h
;5. Check GPI 1,3,5,7 value
pop cx ;restore NO. of GPIO chip
push cx ;save NO. of GPIO chip
mov ax,5e87h
mov bx,03FFh
int 15h

pop cx ;restore NO. of GPIO chip
push cx ;save NO. of GPIO chip
dec cx

mov al,Fail_lenght
mul cl
lea dx, Fail_Str
add dx,ax
cmp bl,33h
jne test_result

cmp al,00h

```

```

jne test_fail
;4.Set GPIO 1,3,5,7 as output,GPIO 0,2,4,6 as input
pop cx
push cx
mov ax,5e87h
mov bx,0255h
int 15h
;4. Set GPIO 1,3,5,7 Output High
pop cx ;restore NO. of GPIO chip
push cx ;save NO. of GPIO chip
mov ax,5e87h
mov bx,04ffh
int 15h
;6. Check GPIO 0,2,4,6 value
pop cx ;restore NO. of GPIO chip
push cx ;save NO. of GPIO chip
mov ax,5e87h
mov bx,0300h
int 15h

pop cx ;restore NO. of GPIO chip
push cx ;save NO. of GPIO chip
dec cx

mov al,Fail_lenght
mul cl
lea dx, Fail_Str
add dx,ax
cmp bl,0ffh
jne test_result

;4. Set GPIO 1,3,5,7 Output differential
pop cx ;restore NO. of GPIO chip
push cx ;save NO. of GPIO chip
mov ax,5e87h
mov bx,0422h
int 15h
;5. Check GPI 0,2,4,6 value
pop cx ;restore NO. of GPIO chip
push cx ;save NO. of GPIO chip
mov ax,5e87h
mov bx,03FFh
int 15h

```

```

pop    cx          ;restore NO. of GPIO chip
push   cx          ;save NO. of GPIO chip
dec    cx

```

```

mov    al,Fail_lenght
mul    cl
lea    dx, Fail_Str
add    dx,ax
cmp    bl,33h
jne    test_result

```

```

pop    cx          ;restore NO. of GPIO chip
push   cx          ;save NO. of GPIO chip
dec    cx
mov    al,Success_lenght
mul    cl
lea    dx, Success1_Str
add    dx,ax

```

```

;Do Second PCA9554 test
;1.Set GPIO 0,2,4,6 as output, GPI 1,3,5,7 as input

```

```
test_result:
```

```

mov    ah,09h
int    21h
pop    cx
dec    cx
jnz    next_test

```

```
Finish_Test:
```

```

popa
.exit

```

```

;=====
;Input   : CL - register index
;         CH - device ID
;Output  : AL - Value read
;=====
Ct_I2CReadByteProcNear

```

```
push cx
```

```

mov    dx,SMBus_Port +04h
inc    ch
mov    al,ch          ;ID cmd(read)
out    dx,al
NEWIODELAY

```



```

NEWIODELAY

call CT_Chk_SMBus_Ready

pop ax
mov dl,03h
out dx,al          ;Index
NEWIODELAY
NEWIODELAY

mov dl,02h
mov al,48h
out dx,al          ;Read data
NEWIODELAY
NEWIODELAY

mov cx, 100h

@@:
newiodelay
loop short @B

call CT_Chk_SMBus_Ready

mov dl,05
in al,dx           ;Data0
NEWIODELAY
NEWIODELAY

ret
Ct_I2CReadByteEndp
;=====
;Input : CL - register index
;        CH - device ID
;        AL - Value to write
;Output: none
;=====
Ct_I2CWriteByteProcNear

push ax
push cx

mov dx,SMBus_Port +04h
mov al,ch          ;ID cmd(Write)
out dx,al

```

```

        call Delay5ms
        call Delay5ms

        call CT_Chk_SMBus_Ready

        pop ax
        mov dl,03h
        out dx,al          ;Index
        call Delay5ms
        call Delay5ms

        pop ax
        mov dl,05
        out dx,al          ;Data0
        call Delay5ms
        call Delay5ms

        mov dl,02h
        mov al,48h
        out dx,al          ;write data
        call Delay5ms
        call Delay5ms

        mov cx, 100h
@@:
        newiodelay
        loop short @B

        call CT_Chk_SMBus_Ready

        ret
Ct_I2CWriteByteEndp
CT_Chk_SMBus_ReadyProcNear
        mov dx,SMBus_Port + 0;status port
        clc
        mov cx,0800h
Chk_I2c_OK:
        in  al,dx          ;get status
        NEWIODELAY
        out dx,al          ;clear status
        NEWIODELAY

        test al, 02H      ;termination of command ?
        jnz short Clear_final

```

```

        and al, NOT 40H;mask INUSE bit
        or  al,al      ;status OK ?
        jz  short Clear_final

        test al,04h    ;device error
        jnz short SMBus_Err

        loop short Chk_I2c_OK
        ;Smbus error due to timeout
SMBus_Err:

        stc
        ret

Clear_final:

        clc
        ret

CT_Chk_SMBus_ReadyEndp

;=====
===
Delay5msprocnear
        push cx
        mov cx, 1000
        @@:
        NEWIODELAY
        loop short @B
        pop cx
        ret
Delay5ms   ENDP
Phoenix_debuger proc near
        pushf
        push cx
        push offset PhdebugRetAddr
        push cs
        push cs
        db 0EAh
        dw 0013h
        dw 0DA00h
PhdebugRetAddr:
        popf
Phoenix_debuger endp
;=====
===
;      Program END

```

---

```
;=====
=====
```

END

## Appendix D GPIO Sample Code

---

## **www.advantech.com**

Please verify specifications before quoting. This guide is intended for reference purposes only.

All product specifications are subject to change without notice.

No part of this publication may be reproduced in any form or by any means, electronic, photocopying, recording or otherwise, without prior written permission of the publisher.

All brand and product names are trademarks or registered trademarks of their respective companies.

© Advantech Co., Ltd. 2010

# DATA MODUL

DISPLAYS AND EMBEDDED SOLUTIONS



## **DATA MODUL Headquarters Munich**

Landsberger Str. 322  
D-80687 Munich - Germany  
Phone: +49-89-56017-0  
Fax: +49-89-56017-119  
[www.data-modul.com](http://www.data-modul.com)

## **Sales Office Hamburg**

Borsteler Chaussee 51  
D-22453 Hamburg - Germany  
Phone: +49-40-42947377-0

## **Sales Office Duesseldorf**

Fritz-Vomfelde-Str. 8  
D-40547 Duesseldorf - Germany  
Phone: +49-211-52709-0

## **Sales Office Scandinavia**

Lundsmindevej 5  
DK-6000 Kolding - Denmark  
Phone: +45-75-224477

## **DATA MODUL FRANCE**

7 rue Saint Christophe  
F-60300 BARON - FRANCE  
Phone: +33-3-44549699

## **DATA MODUL Italy, S.r.l.**

Regus Center Senigallia  
Via Senigallia 18/2  
I-20161 Milano - Italy  
Phone: +39-02-64672509

## **DATA MODUL Iberia, S.L.**

c/ Adolfo Pérez Esquivel 3  
Edificio Las Americas III Oficina 40  
28230 Parque Empresarial  
Las Rozas / Madrid - Spain  
Phone: +34-916-366458

## **DATA MODUL Suisse GmbH**

Stationsstr. 57  
CH-8606 Nänikon - Switzerland  
Phone: +41-44-94091-50

## **DATA MODUL Ltd. / UK**

Collins Building  
3 Vigo Place - Aldridge - Walsall  
WS9 8UG - United Kingdom  
Phone: +44-1922-457358

## **DATA MODUL Inc. / USA**

275 Marcus Blvd, Unit K  
Hauppauge, NY 11788 - USA  
Phone: +1-631-951-0800