

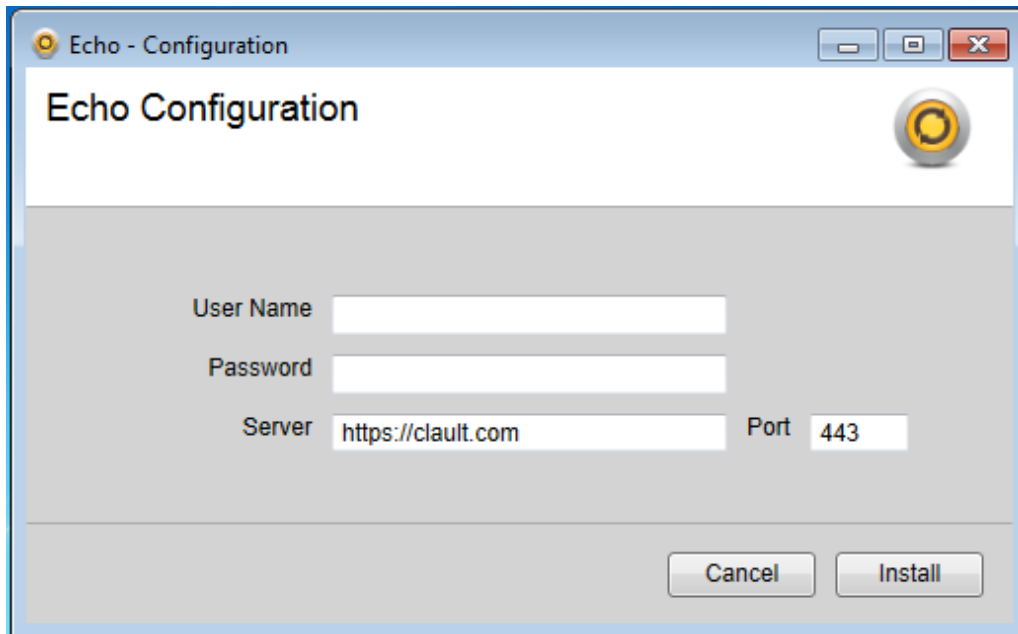
Clault™ Echo User Manual Guide

Dated: Nov 2013

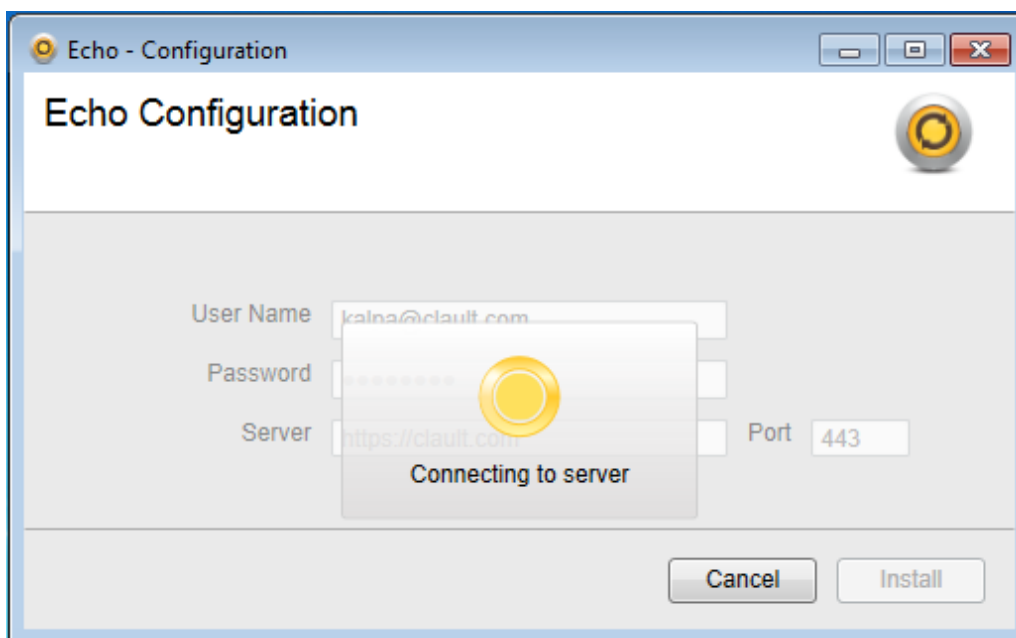
Thank you for choosing Clault Echo. This user manual guide is designed to help you get started quickly.

Echo Configuration.

Step 1: Login to your new Echo account to begin product initialization with the application username / password emailed to you.

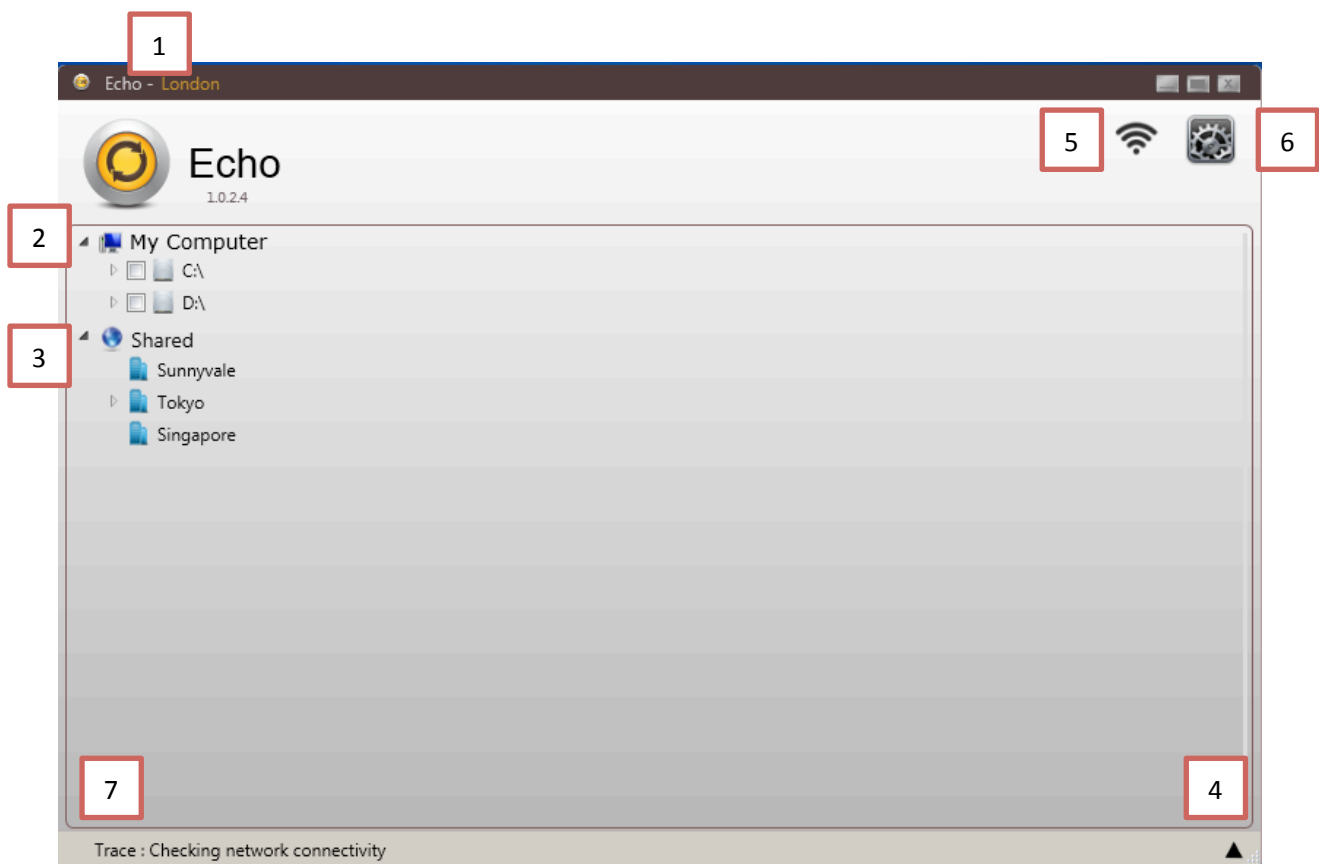


Step 2: Upon login, a busy indicator will prompt and you may have to wait a moment while Echo connects to server and do the initialization.



After successful initialization Echo will show the main application window.

Quick Tour

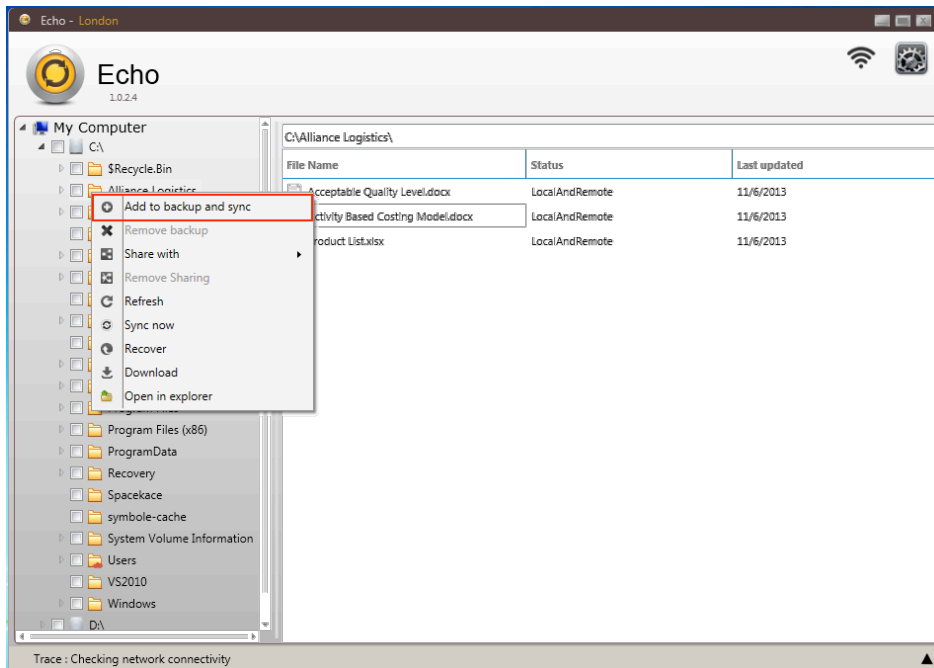


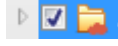
1. **Name of the branch**
2. **My Computer**
Show folders in your computer.
3. **Shared**
Folders shared by other branches with your branch.
4. **Log tabs toggle button.**
Show/Hide log tab.
5. **Connectivity Status**
Indicate the server connectivity.
6. **Inbox**
Show configurations and allow editing.
7. **Log Message Area**
Show status of the current process.

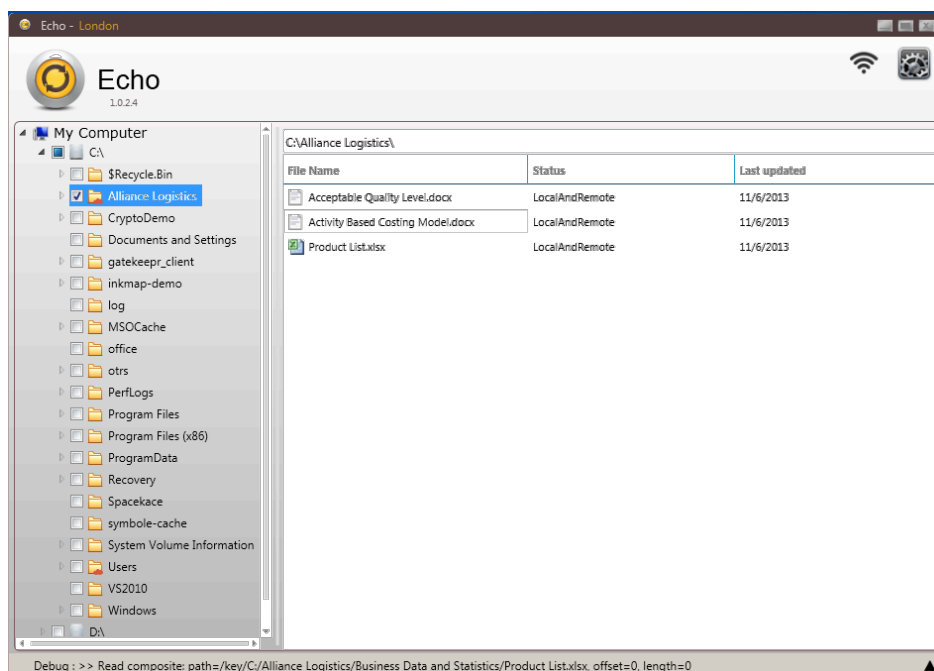
Backup And Synchronize

Backup and synchronize directory.

To backup and synchronize a directory , right click on directory and choose 'Add to backup and sync' from the context menu.



When the process completes, the folder will look like  : Marked with a tick to indicate that this folder has backed up and synchronized. The red cloud icon indicates that this folder has a cloud copy.



Remove backup and synchronize of a directory

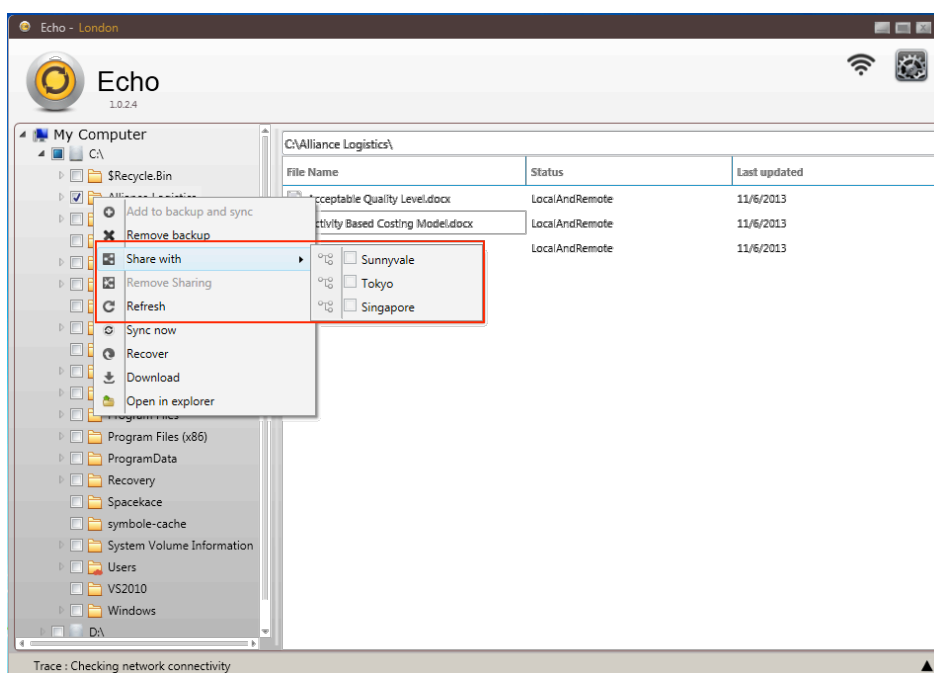
To remove backup and synchronization, right click the directory and choose 'Remove backup' from the context menu. The folder icon will change back to the normal state.



Share

Share files with branches.

To share files with branches, right click the containing directory and choose 'Share with' from the context menu.

It will list the branches you have as a sub menu.

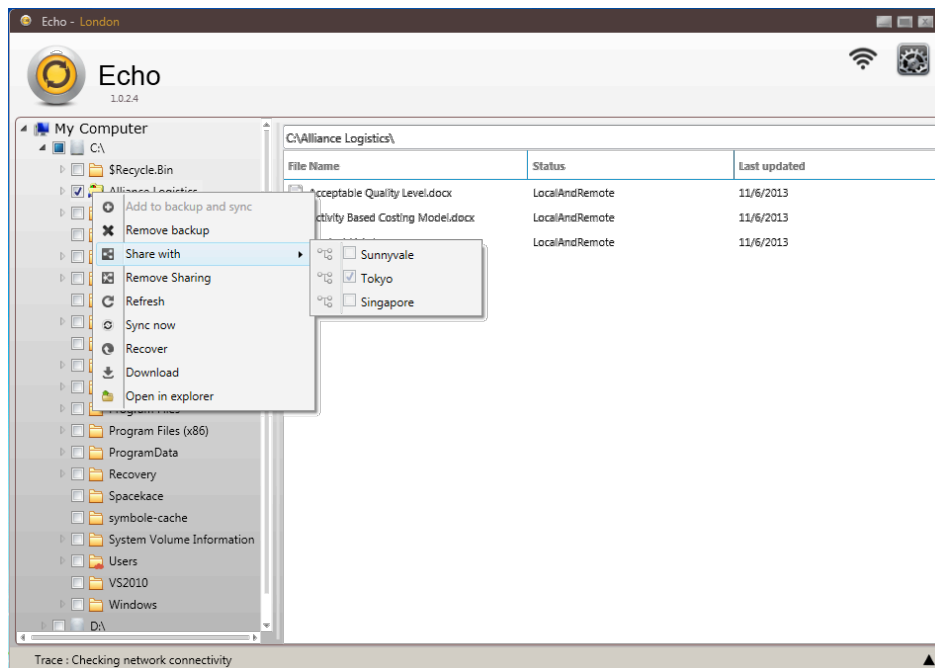


When sharing process completes, the shared folder icon will be marked with  icon to indicate that it has been shared. The branch sub menu also indicates that this folder has been shared to another branch with  checkbox.

Remove sharing.

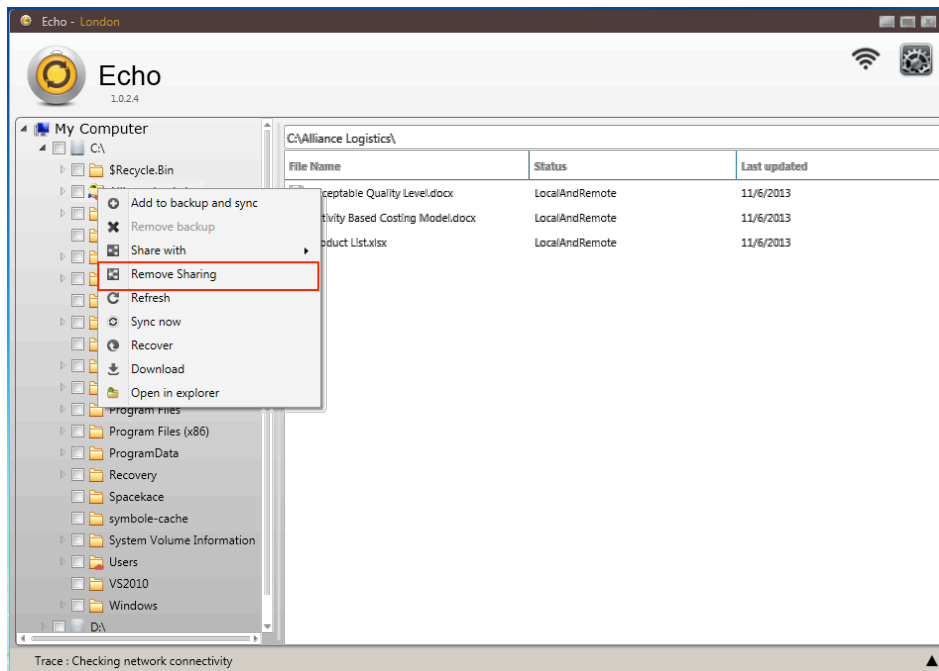
Remove sharing with one branch

To remove sharing with a branch, right click the directory for remove sharing and choose 'Share with' from the context menu. It will list the branches you have in your company as a sub menu. Select the shared branch again to remove sharing from that particular branch.



Remove sharing with all branches.

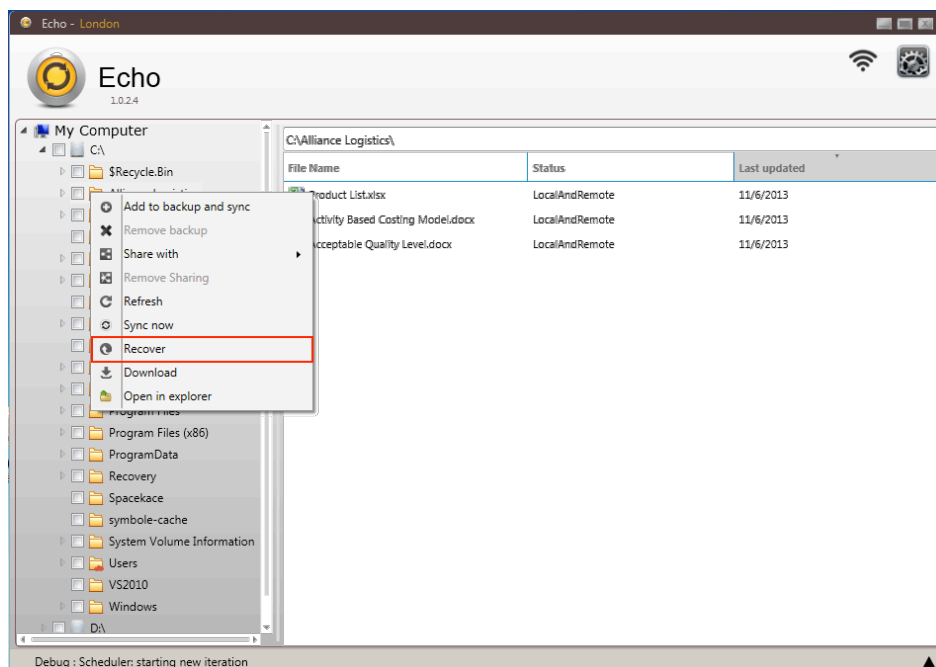
To remove sharing from all branches, right click the directory to remove sharing and choose 'Remove Sharing' from the context menu.



Recover

Echo allows you to recover your cloud backup files. For example, when your hard drive crashes or when you want your files restored to a new device.

To recover files, right click the directory to be recovered and choose 'Recover' from the context menu.



The 'Recover files from cloud' dialog appears, which provides settings for the recover operation.

1. Child directory recovery enable/disable

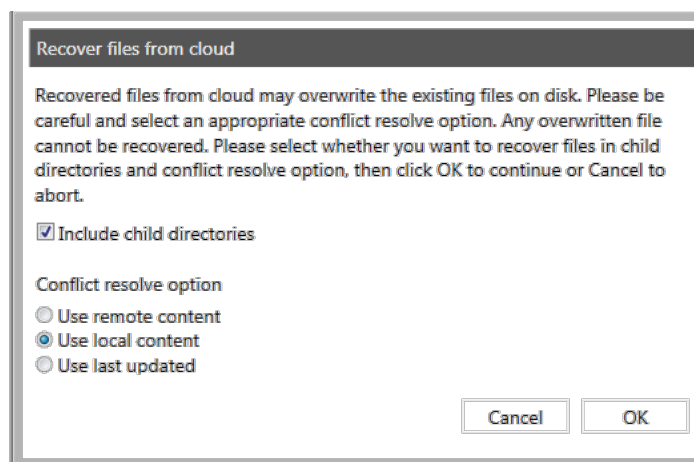
Allow to recover only selected directory or recursively recover child directories.

a. As default this will be enabled

2. Conflict resolve options

If both cloud and the same local file exists, the system has to know how you would like to resolve the conflict. The options are:

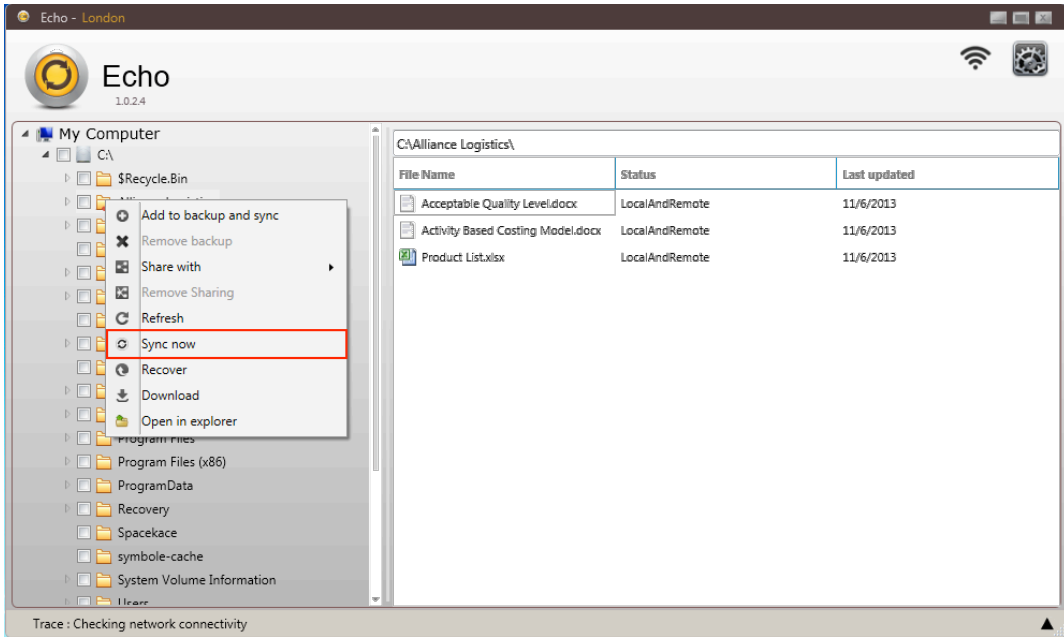
- a. Use remote content - Use remote content as the reference when conflict occurs.
- b. Use local content – Use local content as the reference when conflict occurs.
- c. Use last updated – Use local or remote content as the reference based on which file has the most recently updated content (date).



After adjusting the settings , click OK.

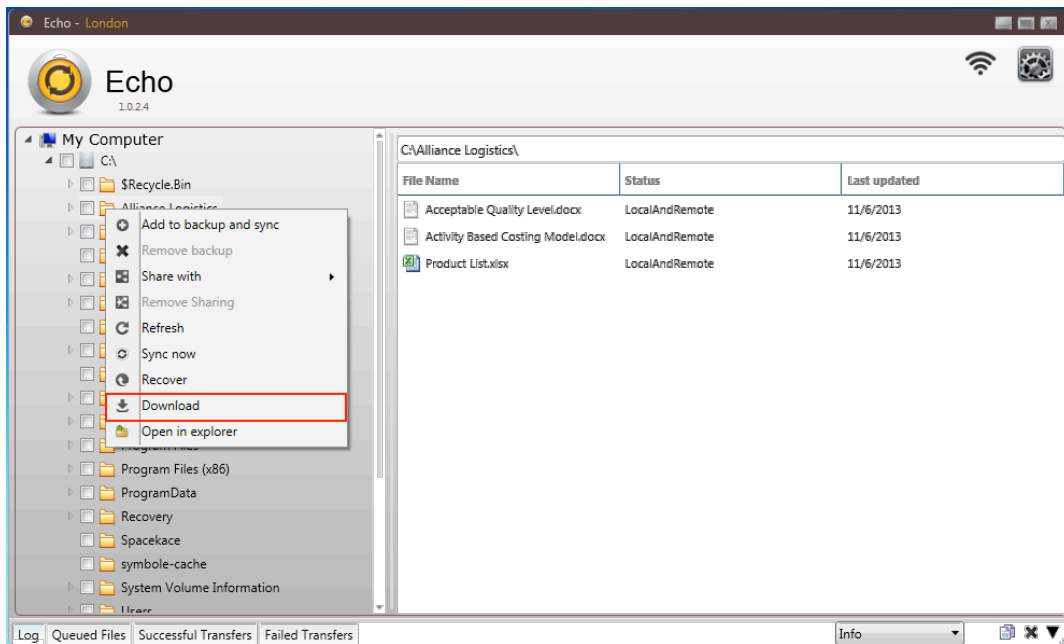
Manual synchronization.

If you need to do manual synchronization for any directory you can use 'Sync Now' context menu to forcefully synchronize the directory.



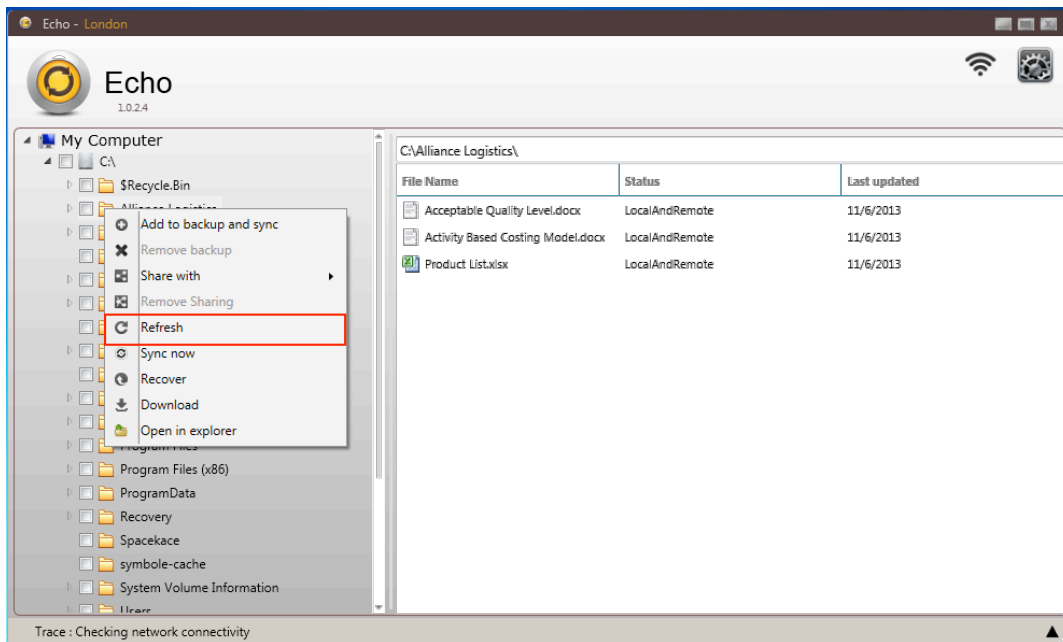
Download backup files.

You can download backup files using 'Download' option on the right click context menu.



Reflect changes in directory hierarchy.

To reduce resource utilization, creating a new directory or removing a directory will not be immediately reflected on Echo. You can use the 'Refresh' context menu item to show latest changes in the computer's directory hierarchy.

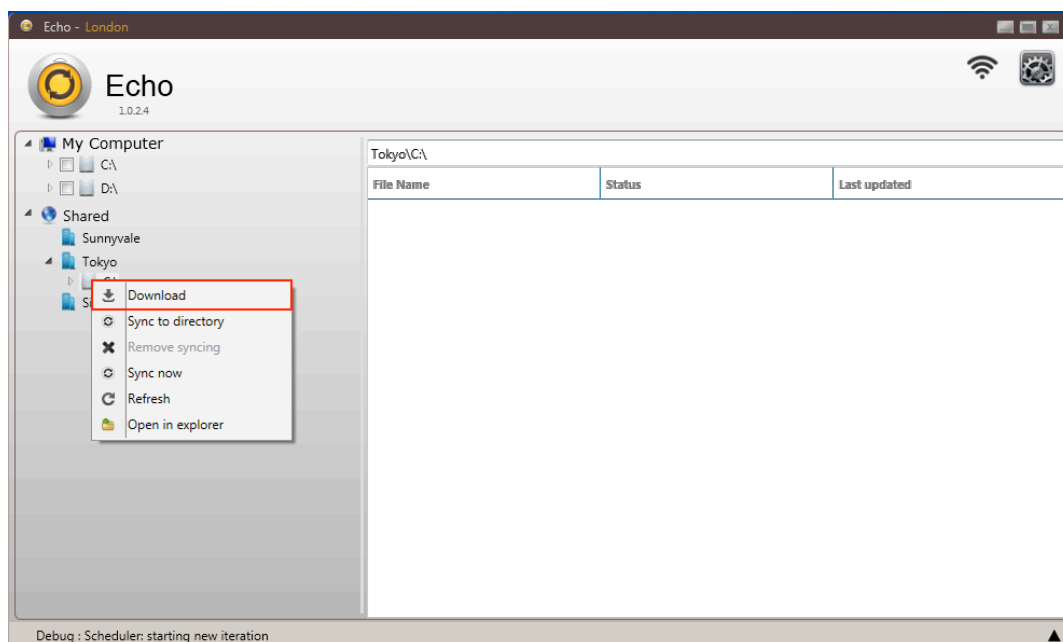


Open directories on windows explorer.

You can open directory on windows explorer using 'Open in explorer' context menu item.

Download shared files from other branches.

You can download content of the shared directory from other branches by right clicking on the shared directory, and choose 'Download' menu item.

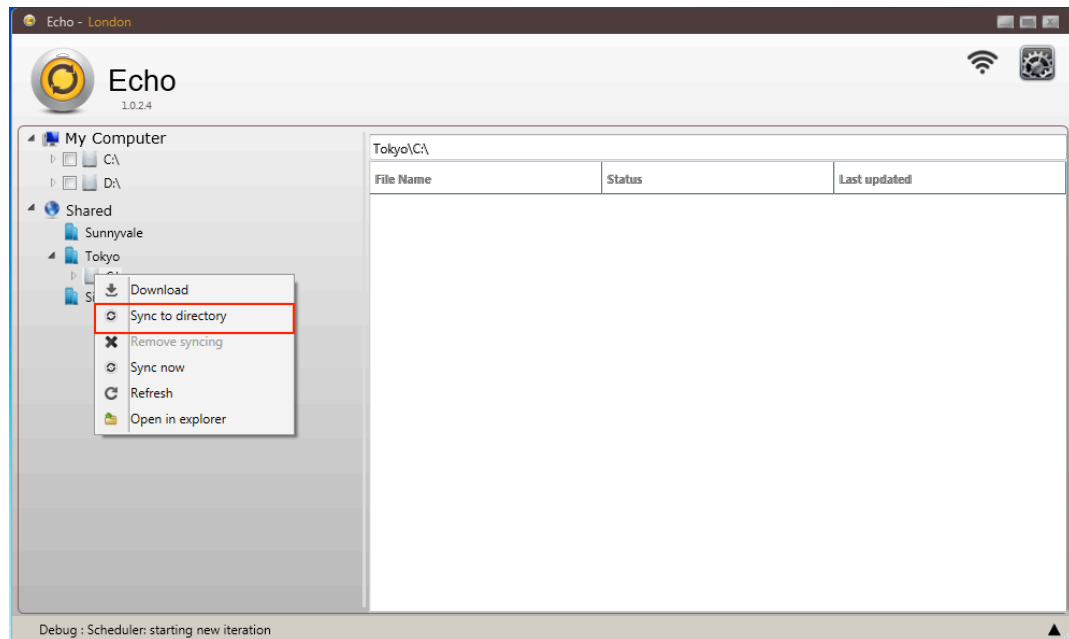


Synchronize local directory to shared remote directory (Available on Ver. 2)

You can maintain specified local directory synchronized with shared remote directory by 'Sync to directory'.

Step 1: Right click on the shared directory on Echo directory view and select 'Sync to directory'


Step 2: Echo will open up a directory browser , please locate the target directory on your local file system.



“Sync Now”, “Refresh” and “Open In Explorer”

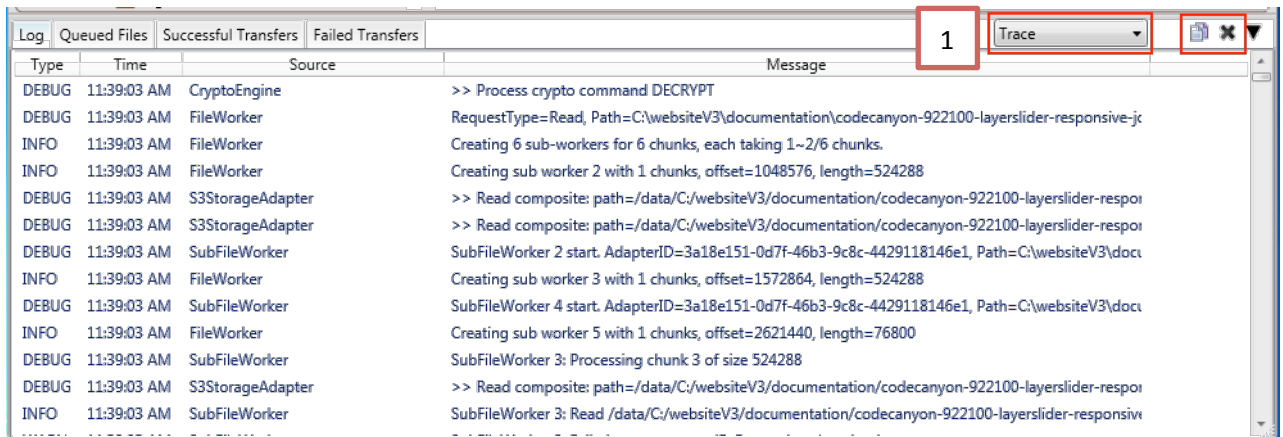
“Sync now”, “Refresh”, and “Open in explorer” on shared directory context menu have the same functionality as the local directory context menu.

Log Palette

Log palette consists of four tabs with information related to Echo operations. You can access the Log palette by clicking on  mark located at the bottom right corner.

Log tab.

The Log tab shows the system log of Echo and allows you to analyze past Echo operations.



1. Log level controller

Consists with

Off
Trace
Debug
Info
Warning
Error
Fatal

2. Copy log and Clean log buttons

You need to select logs before copy logs.

Queued Files Tab

Queued files tab shows the file operations by operation type, operation status, current progress and last synchronization attempt.

File	Status	Operation	Progress	Last Sync Attempt
C:\Alliance Logistics\Important\Product List.xlsx	Completed	Download	<div style="width: 100%; height: 10px; background-color: blue;"></div>	11/7/2013 1:12:13 PM
C:\Alliance Logistics\Important\Activity Based Costing Model.docx	Completed	Download	<div style="width: 100%; height: 10px; background-color: blue;"></div>	11/7/2013 1:12:14 PM
C:\Alliance Logistics\Important\Acceptable Quality Level.docx	Completed	Download	<div style="width: 100%; height: 10px; background-color: blue;"></div>	11/7/2013 1:12:18 PM
C:\Alliance Logistics\Important\Product List.xlsx	Completed	Download	<div style="width: 100%; height: 10px; background-color: blue;"></div>	11/7/2013 1:12:21 PM
C:\Alliance Logistics\Important\Activity Based Costing Model.docx	Completed	Download	<div style="width: 100%; height: 10px; background-color: blue;"></div>	11/7/2013 1:12:22 PM
C:\Alliance Logistics\Important\Acceptable Quality Level.docx	Completed	Download	<div style="width: 100%; height: 10px; background-color: blue;"></div>	11/7/2013 1:12:26 PM

Operation Types

- Download: Downloading the file to local file system.
- Upload: Uploading the file to remote file system.
- Delete: Deleting file on the remote file system.
- Move: Moving the file from one directory to another on the remote file system.
- Rename: Renaming the file

None: No operations done on the file, because the files in local and remote are identical.

Operation Status

Running : Operation is still running.

Stopped: Operation is stopped.

Waiting : Operation is waiting on the queue.

Completed : Operation completed successfully.

Failed : Operation failed.

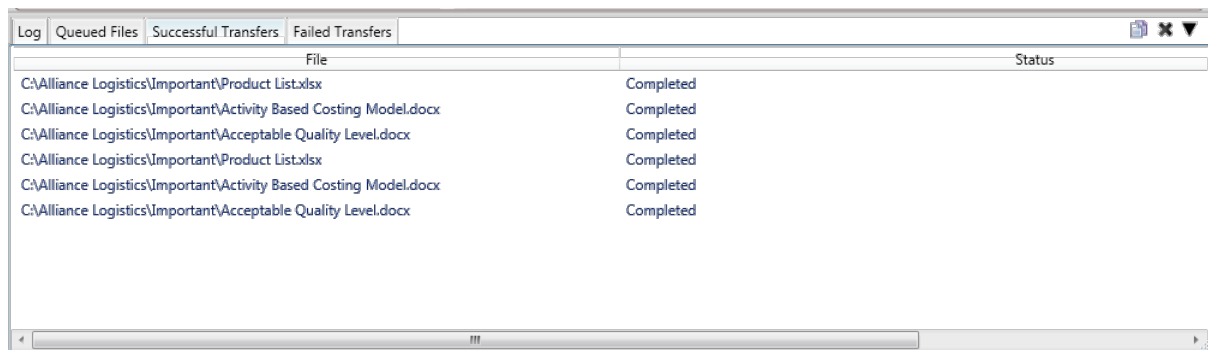
Exit : Operation exit unexpectedly.

Skip : Operation skipped due to invalidation.

Unknown : Unknown.

Successful Transfers Tab

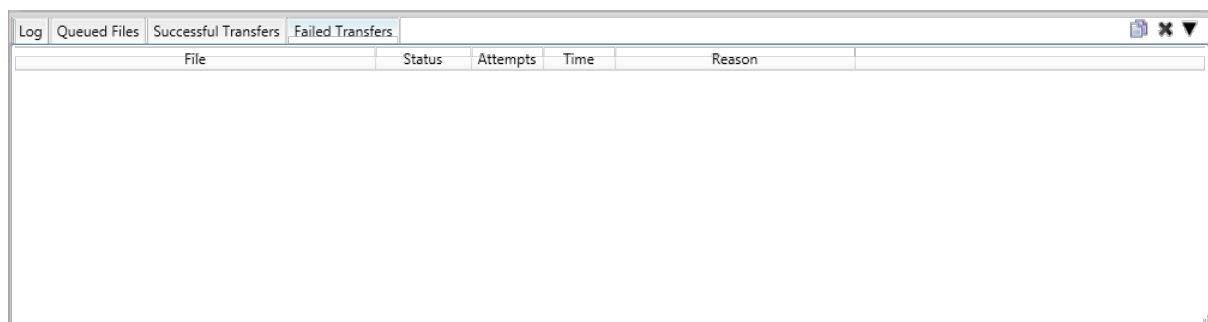
Successful transfer tab shows the file operations which were completed successfully.



File	Status
C:\Alliance Logistics\Important\Product List.xlsx	Completed
C:\Alliance Logistics\Important\Activity Based Costing Model.docx	Completed
C:\Alliance Logistics\Important\Acceptable Quality Level.docx	Completed
C:\Alliance Logistics\Important\Product List.xlsx	Completed
C:\Alliance Logistics\Important\Activity Based Costing Model.docx	Completed
C:\Alliance Logistics\Important\Acceptable Quality Level.docx	Completed

Failed Transfers Tab

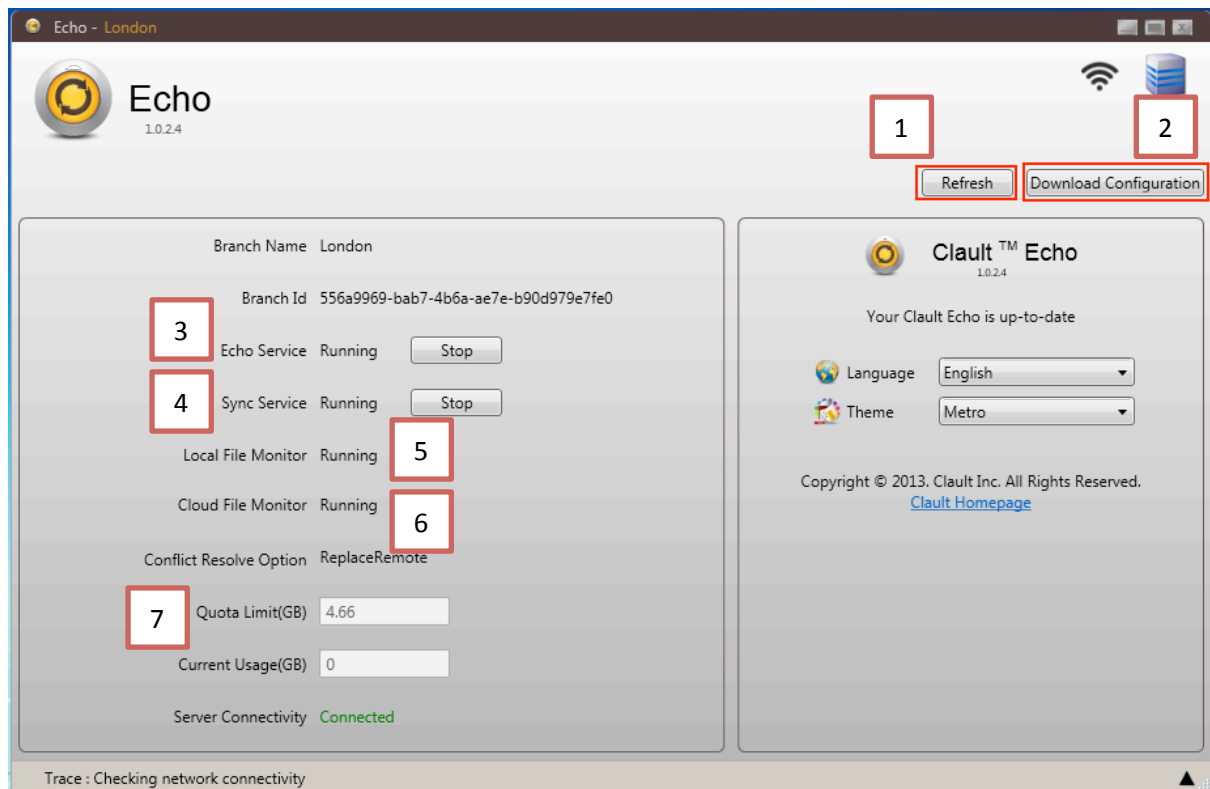
Failed transfer tab shows the file operations which failed. It describes the file name, status, number of attempts and reason of failure.



File	Status	Attempts	Time	Reason
------	--------	----------	------	--------

Settings

Settings allows you to view application status, update configurations or refresh configurations. You can also change language and theme there.



1. Refresh

Refresh all your Echo services and status.

2. Download Configuration

This allows you to download the Echo configurations from cloud.

3. Echo Service

Windows service that monitors all Echo related services and operations.

4. Sync Service.

Sync service responsible for upload, download and synchronization operations.

5. Local File Monitor

File monitor service for local files.

6. Cloud File Monitor

File monitor service for cloud files.

7. Quota Limit. (GB)

Data storage capacity you have on the cloud.

Customer Support

For customer support, please contact your company's system administrator, he would be able to file a support ticket at <https://clault.com/helpdesk>.

Alternatively, you can email us at support@clault.com.

Clault™ is a trusted secure document sharing solution. If you have further enquiries, please contact us at support@clault.com.