



USER'S MANUAL



Features

Browse the Web.
Visit your favorite websites

Check your e-mail
Keep in touch with friends and family

Watch YouTube™ videos
Browse the world's most popular video-sharing community

Read your favorite books
Download thousands of books with the included E-book reader *

Discover thousands of apps for Android™
Games, applications, and more with marketplace (need for customer installed)

Connect to the Internet wirelessly
High-speed Wi-Fi 802.11 b/g/n networking

HDMI™ output to your TV™
Enjoy in the comfort of your living room

Enjoy your media library anywhere

Portable powerhouse plays popular music, video, and photo formats
microSD memory card reader
Increase your storage capacity (up to 16 GB supported)

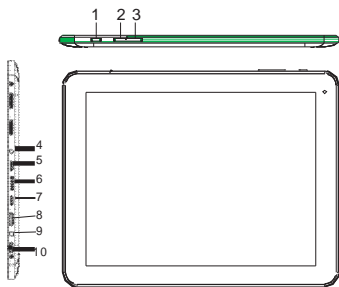
Built-in camera
Convenient front-facing camera

Automatic orientation detection
Read any way you want; the display adjusts automatically!

Reading books in the ePub format requires the included E-book reader application.

Requires optional HDMI cable (Type A-to-Type C). 1080p HD video playback requires a video file encoded at 1080p. Streaming video quality will be affected by the source, and the quality and condition of your network connection.

Unit at a Glance



1.ESC

Press this button to return to a previous screen.

2/3. VOL+/VOL-

Press VOL+ to increase the volume level.

Press VOL- to decrease the volume level.

4. Headphone

Audio output connection for headphones.

5.USB OTG

Connect to a USB device or a computer to transfer data (e.g. music, videos, photos, files).

6. microSD

Load external microSD memory cards here.

7.USB HOST

Connect to a USB device

8. HDMI

Connect to a TV or other displays.

9.DC IN 5V

Change and power the tablet with the included power adapter.

10. POWER

Press to turn the unit on, or to turn the screen on or off.

Press and hold to access the Power Off menu.

Getting Started

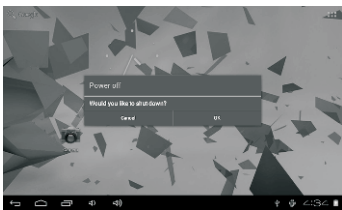
Turning the Tablet on or off

To turn the tablet on:

Press and hold the Power key until the LCD screen turns on. Wait until the Home screen appears; the tablet is now ready for use.

To turn the tablet off:

1. Press and hold the Power key until the Device Options menu appears.



2. Touch ok the screen to turn off the tablet.

Turning the Screen On or off (Standby)

When the tablet is on, you can turn off the screen to conserve battery power. Simply press the Power key once to turn the screen off. Press the Power key again to turn the screen back on.

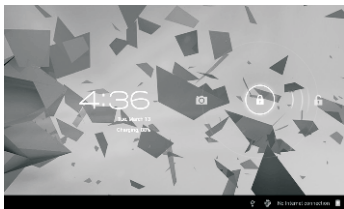
i To conserve battery power, the screen can be set to turn off automatically when the tablet is not in use (between 1 minute and 30 minutes). This Screen timeout option can be found in the Display menu.

Getting Started

Unlocking the Screen

When the screen turns off, you will have to unlock the screen when you turn it back on.

To unlock the screen, drag the lock icon across the screen towards the lock icon.



About Applications

To open an application, touch the application icon on the home screen or in the Launcher where you can tap the icon right up on the home screen to get in..

Launcher screen:



The screen shown above is for illustrative purposes only. Reserves the right to modify and improve the final list of applications available on the tablet.

About Applications

Preinstalled Applications

Some applications have been installed on your tablet for your convenience.

These applications include:



Browse the web.



Perform simple mathematical operations.



Take pictures or videos with the frontfacing camera.



Check your e-mail.



Play music.



Access the Settings menu to adjust the tablet's options.

Preinstalled Applications

Installing Applications

You can also download and install additional applications from the device's applications marketplace, the web browser, or other sources.

The tablet must be set to allow installation of applications from non-Market sources. The Unknown sources option can be set in the Application settings menu.

Connect to a Wi-Fi network

The Notification bar displays icons that indicate your tablet's Wi-Fi status.



Notification that an open Wi-Fi network is in range.



Connected to a Wi-Fi network (waves indicate connection strength).

[no icon] There are no Wi-Fi networks in range, or the Wi-Fi radio is off.

1. Turn on the Wi-Fi radio if it is not already on. To turn on Wi-Fi:

- Go to the Home screen: Press the Home key.
- Open the Settings menu: tap the icon right up on the home screen to get into the launcher, then touch Settings icon.
- Open the Wireless & networks menu: Slide the icon to ON status.



When Wi-Fi is on, the tablet will look for and display a list of available Wi-Fi networks.



If a network that you have connected to previously is found, the tablet will connect to it. If you don't see your network in the list, you can force the tablet to re-scan. To scan for networks, tap the Menu key, and then touch Scan.

Connect to a Wi-Fi network

2. Select an available Wi-Fi network to connect to:

In the same Wi-Fi settings menu above, touch a network in the list.

If the network is open, the tablet will prompt you to confirm connection to the network. Touch Connect to confirm.

If the network is secured (as indicated by a Lock icon), the tablet will prompt you to enter a password or other credentials. Touch the Wireless password box to show the on-screen keyboard and then use it to enter the password. Touch Connect to confirm.



When you have successfully connected to a Wi-Fi network, the Notifications bar at the top of the screen will show a Wi-Fi signal indicator.



To learn about how to add a Wi-Fi network when it is not in range or when the router is set to obscure the network name (SSID); or to configure advanced Wi-Fi options, please refer to the manual.

Optional Connections

Connecting to a Computer

Connect the tablet to a computer to transfer files.

1. Connect your tablet to the computer.

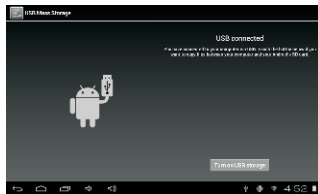
With the included USB cable: Plug the small end of the cable into the USB 2.0 high speed connector of the tablet. Plug the large end of the cable into an available USB 2.0 high speed port on the computer.

2. When your tablet is connected, slide up the USB icon right down on the screen and then touch icon USB connected.



3. Mount the storage.

Touch button Turn on USB storage to mount the tablet's built-in storage. When it is mounted, you can copy files to or from your tablet.



To connect the tablet to the TV:

1. Plug the small end of the HDMI cable into the mini HDMI connector on the tablet.
2. Plug the large end of the HDMI cable into the HDMI port on the TV.
3. Turn on the TV, and set its display mode to the HDMI port that the tablet is connected to.



If you need help setting the display mode of the TV, please refer to the documentation provided by the TV manufacturer. If there is no sound from the tablet on your TV, you may need to set the HDMI switch sound settings.

Specifications

Processor	BOXCHIP A10 1GHz(Cortex A8)
RAM	1G DDR3
Storage	4/8GB(option) flash built-in; micro SD card slot (max.32GB supported)
Display	9.7" TFT LCD(1024x768)IPS, Capacitive touchscreen
Wi-Fi Networking	IEEE 802.11 b/g/n
Video Output	Mini HDMI,type C(1080p and 720p supported)
Audio Output	3.5mm headphone
PC Interface	USB 2.0 high speed
Additional Features	Built-in microphone Front facing camera(0.3MP) 2X1W speaker
Operating System	Android™ 4.0
Power	Rechargeable Li-poly battery power Adapter(DC 5V,2A)
Playback Time (hours)	Up to 8 hours music, 6 hours video, 6 hours web browsing

Music was tested with a 128 kbps MP3 file; video was tested with a 1920x1080 MPEG-4/AVC file; browsing was tested with the screen brightness set to default. Actual playback results may vary.