

PowerCinema NE for Everio Tutorial

PowerCinema NE for Everio Tutrial

Before Using PowerCinema.....	3
Connecting Everio to a PC	3
Disconnecting Everio.....	4
PowerCinema Start and Close	5
About the PC Environment.....	6
Tutorial.....	7
Main Menu.....	7
Browse Videos	11
Browse Pictures.....	14
Copy/Edit.....	17
Create DVD.....	20
Burning Pictures to DVD	25
Advanced Burning.....	26
Direct DVD	27
Backup.....	30
Reference.....	32
Main Menu.....	32
Navigation Control.....	36
Settings (Main Menu).....	38
Settings (Copy/Edit).....	41
Settings (Create DVD).....	43
Settings (Backup)	47
Settings (Display Settings).....	50
Settings (Audio Settings).....	53
Settings (Setup Wizard).....	55
Settings (About PowerCinema NE for Everio).....	57
Browse Videos	58
Browse Pictures.....	63
Copy/Edit.....	67
Create DVD 1	71
Create DVD 2.....	76
Direct DVD	79
Backup.....	81
About the Backup Folder.....	83
Reference Material.....	85
FAQ	85
Browse Videos	86
Copy/Edit.....	86
Create DVD.....	87
Direct DVD	87
Backup.....	88
Troubleshooting	89
Information You Should Know.....	90
Glossary	91

Before Using PowerCinema

Connecting Everio to a PC

When you connect Everio to your PC for the first time, perform the following to ensure the connection.

1 Start-up Your PC

Start-up your PC to operate in Windows.

2 Power On Everio

Connect an AC adapter to Everio and supply power from an outlet (Using batteries as a power source may lead to unexpected problems such as data loss due to a power level reduction).

Switch the Everio power switch to [Play] mode to power on the device.

3 Connecting Everio to a PC

Connect your PC and Everio via a USB cable.

Plug in the small USB connector to Everio.

Plug in the rectangular USB connector to your PC. Refer to the PC's user manual for details on where to plug in the USB connector.

4 Switching Modes in Everio



Select [Playback on PC] from the Everio screen.

Ensure that the PC recognizes Everio as an external hard disk drive.

Note: It may take several minutes for the drive to be recognized.

Note: Image shown in the figure on the left may vary from your environment.

You are now ready to use PowerCinema NE for Everio.

Disconnecting Everio

5 Removing Everio from PC

Click the [Safely Remove Hardware] icon from the system task tray.

From the [USB Mass Storage Device - Drive (X:)] list, select the device that represents Everio.

Note: The name "Everio" will not appear in the list. Check the drive letter, which represents Everio, and select that letter from the list.

6 Disconnecting Everio

When the message "The 'USB Mass Storage Device' device can now be safely removed from the system." appears, you can remove Everio from your PC.

Note: Instead of performing the above, you can shut down your PC to remove Everio. However, in an environment where multiple external hard disk drives and memory cards are connected, it is safer to perform the above procedure.

PowerCinema Start and Close

1 Start From PC

To use PowerCinema independently without connecting to Everio, start the software by double-clicking the desktop icon or selecting the software from the [Start] menu.

2 Start When Connecting Everio

To start PowerCinema at the time Everio is connected, perform the following:

1. Select [Playback on PC] from the items displayed when Everio is connected via a USB cable.
2.
 1. Select [Create DVD] from the above items.
 2. Press the [Direct DVD] button on Everio.
3.
 1. Select [Backup] from the above items.
 2. Press the [Direct Backup] button on Everio.

By performing one of the above procedures, PowerCinema will open automatically for operation.

PowerCinema can also be started by performing the procedure "Start From PC" with Everio connected.

3 Closing PowerCinema

To close PowerCinema, click the [x] icon on the upper right corner of the Everio page.

If necessary, perform the procedure "Removing Everio from PC."

4 Reconnecting Everio

To reconnect Everio and automatically open PowerCinema, perform the above procedures in the stated order.

If you have not removed Everio from the PC, double-click the desktop icon to start PowerCinema. The start procedure of PowerCinema from Everio itself can only be used when Everio has been removed from the PC.

5 Auto Open Feature

The auto open feature can be turned off in the PowerCinema settings.

When this feature is disabled, connect Everio to the PC via a USB cable, select [Playback on PC] on the Everio page, and then double-click the desktop icon to open PowerCinema.

About the PC Environment

1 Checking the DVD Drive

To create a DVD on a PC, a recordable DVD drive is required.

Note: Read-only drives such as DVD-ROM drives cannot be used to create a DVD.

Note: CD-R/RW drives cannot be used to create a DVD.

Please contact your PC or drive manufacturer if you cannot determine whether your DVD drive is a recordable device.

2 Environment with Multiple Drives

If your PC consists of multiple recordable disc drives (including a CD drive), start the PowerCinema without connecting Everio and set the DVD drive as the target device. Refer to the "Settings" section in "Reference" for details on this procedure.

Tutorial

Main Menu

1 Settings



Allows you to set the environment settings for PowerCinema.

Generally, you do not have to change these settings since they are set automatically to your environment during installation.

Note: When more than one burning device is connected in your environment, the intended disc drive may not be specified as the target burning device. Therefore, we recommend that you check these settings before using PowerCinema. Refer to the "Select Burner" section in "Settings (Create DVD)" of "Reference" for details.

2 Item Description



Displays a simple description of the currently selected item.

3 Tutorial



Opens this [Tutorial].

Internet connection is required to use the Tutorial.

4 Browse Videos



Plays video files (extension: MOD) from Everio.

5 Browse Pictures



Displays picture files (extension: JPG) from Everio.

6 Copy/Edit



Allows you to copy video and picture files from Everio, or edit these files with the accompanying video editing application software (PowerDirector 5 Express NE).

7 Create DVD



Creates DVD video discs using any video/picture files from Everio.

8 Direct DVD



Creates a DVD video disc directly and easily from Everio.

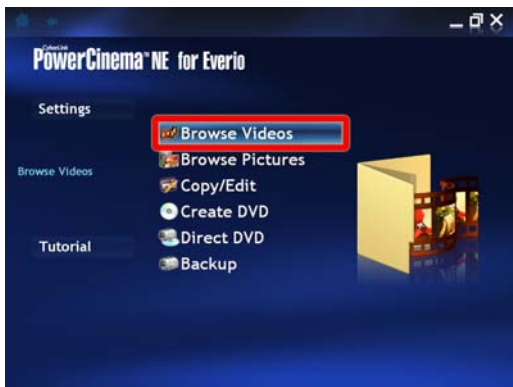
9 Backup



Creates backup copies of video/picture files from Everio.

Browse Videos

1 Main Menu

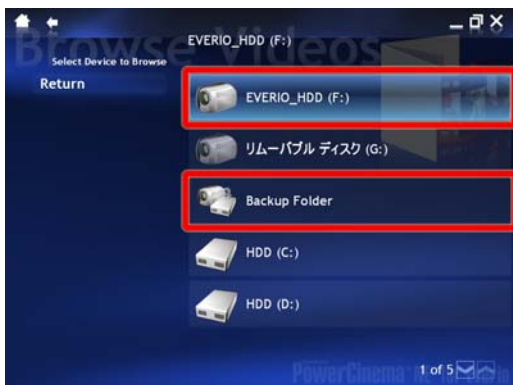


Click [Browse Videos].

PowerCinema allows you to browse video files (extension: MOD only) from Everio, removable devices and PC hard disks. Click [Browse Videos] on the Main Menu page.

Note: Video files (extension: MOD) from Everio are SD_VIDEO Standard files. This format is used in the JVC's hard disk camcorder Everio series.

2 Select Device to Browse Page



Click the drive and folder that contains the video file you want to browse.

Note: Everio must be connected to the PC via a USB cable prior to browsing a video from Everio.

Refer to the "Connecting Everio to a PC" section in "Before Using PowerCinema" for details.

3 Thumbnails List Page



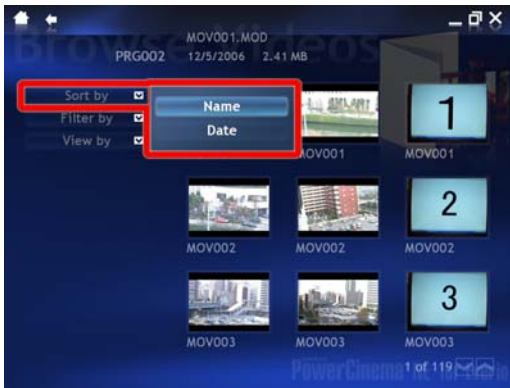
Clicking a thumbnail of the video will start playing the video, as shown in the "Video Browsing Page" below.

4 Video Browsing Page



During video play, moving the mouse cursor to the bottom left of the page will display a control box (Refer to the "Video File Browse Page" section in "Browse Videos" of "Reference" for details on these button operations). Clicking the [Stop] (square) button on the left side will stop video play and return to the Thumbnails List page.

5 Thumbnail Sort Page



To change the order of the listed thumbnails, click the [Sort by] button.

You can specify to sort by file name or file creation date.

6 Filter Page (1)



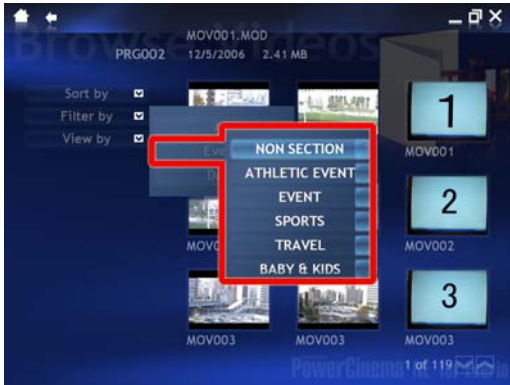
Use the [Filter by] button to select thumbnails to be displayed.

- Click the [Filter by] button, then select [All], [Event] or [Date].
- Selecting [All] displays all thumbnails.
- Selecting [Event] displays thumbnails by events.
- Selecting [Date] displays thumbnails by date.

To use the [Event] filter, events must be set and recorded in Everio beforehand.

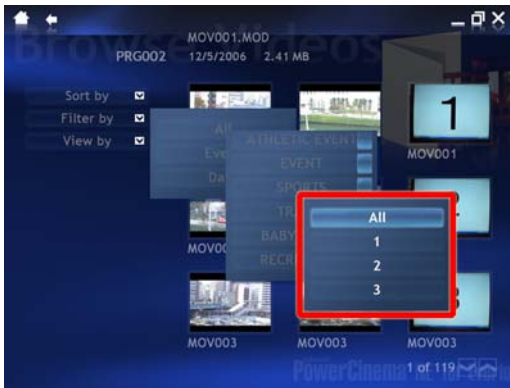
***Refer to the Everio Instruction Manual for details on how to set events in Everio.**

7 Filter Page (2)



Selecting [Event] will show a list of existing event items.

8 Filter Page (3)



Selecting an [Item Name] of an event displays the [All], [1], [2] and [3] buttons. Selecting [All] displays all thumbnails regardless of the selected item number. Selecting [1], [2] or [3] will display thumbnails by the number affixed to each event type. (Note: Only events that exist will be displayed.)

**Each Everio event is affixed with a number accordingly from 1 to 3.*

9 Displaying Thumbnails Setting Page



Selecting [View by] will change the number of displayed thumbnails on the page.

Browse Pictures

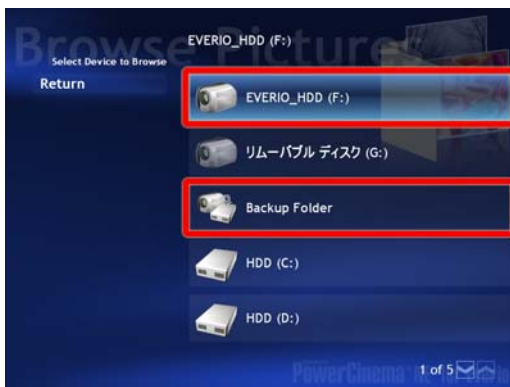
1 Main Menu



Click [Browse Pictures].

PowerCinema allows you to browse picture files (extension: JPG (JPEG format) only) from Everio, removable devices and PC hard disks individually or as a slideshow.

2 Select Device to Browse Page



Click the drive and folder that contains the file you want to browse.

3 Select Folder Page



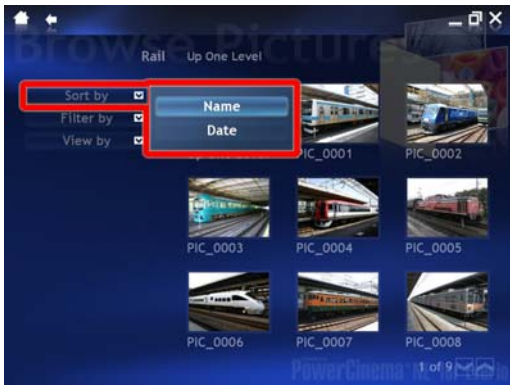
Clicking a folder will display picture files contained within it as thumbnails.

4 Select Thumbnail Page



Clicking the thumbnail of a picture will display that picture.

5 Thumbnail Sort Page



Clicking the [Sort by] button will change the order of listed thumbnails by name or date.

6 Picture Display Page (1)



The [Play] button will launch a picture slideshow with the pictures.

7 Picture Display Page (2)



The [Stop] button stops the slideshow and returns to the thumbnail page.

Copy/Edit

1 Main Menu



PowerCinema allows you to copy videos and pictures backed up to a PC from Everio, removable devices and PowerCinema, to a different folder on the PC.

Note: The destination copy folder is specified to a default location, but may be changed from the Settings menu (Refer to the "Destination Copy Folder Settings" section in "Settings (Copy/Edit)" of "Reference").

2 Select Device to Copy/Edit from Page



In the Select Device to [Copy/Edit] from page, select the drive or folder that contains the video or picture to copy.

3 Select File Page



Click the checkbox (square) to place a checkmark next to the file you want to copy. To deselect the file, click the checkbox again.

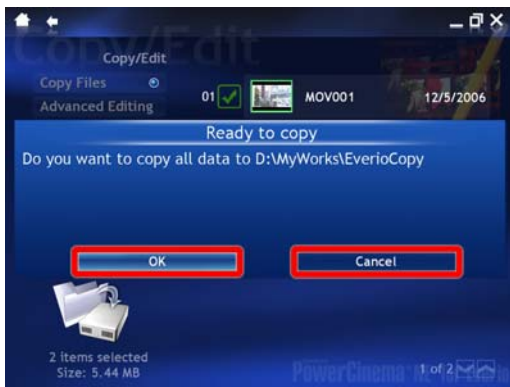
Clicking the [Copy/Edit] button will display only those selected files as thumbnails.

4 Select File Confirmation Page



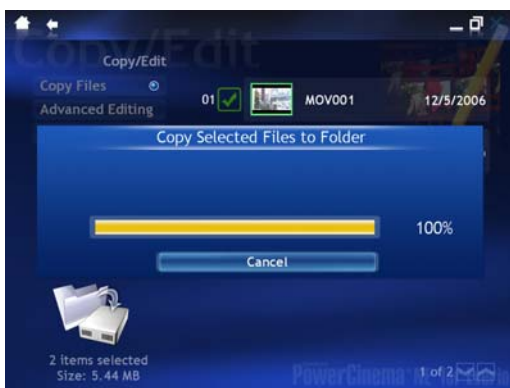
Check that you have selected the correct files to copy, then click the [Copy Files] button. Removing checkmarks from any of the selected files will exclude those files from being copied. If you need to add more files, use the [Previous] (arrow) button to return to the previous page to select files.

5 Copy Files



When you click the [Copy Files] button, the [Ready to Copy] dialog appears. Check that the correct destination is selected, and then click [OK]. If you need to change the copy destination or cancel the copy operation, click [Cancel].

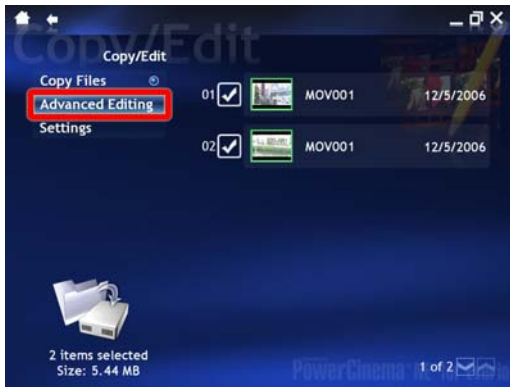
6 Copying Page



When file copying starts, a progress bar is displayed. To cancel copying, click [Cancel].

Note: It may take some time for the copying operation to be cancelled.

7 About Advanced Editing (Select File Confirmation Page)

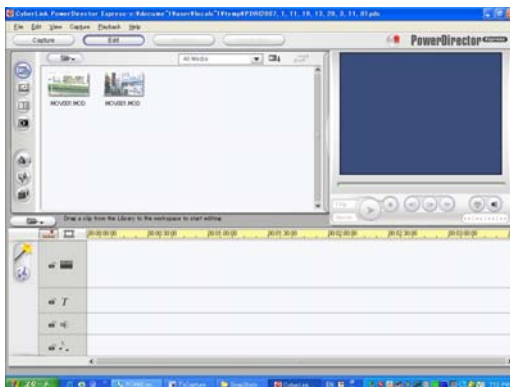


Clicking the [Advanced Editing] button on the Select File Confirmation page will open PowerDirector Express.

PowerDirector Express allows you to create video files with music, narration, titles and transition effects.

Note: When using PowerDirector Express, we recommend that you first copy all material from Everio to a backup folder, then use the material in the backup folder for editing.

8 PowerDirector Express Open Page



This is an example of the PowerDirector Express Open page. For instruction on how to use PowerDirector Express, please refer to the PDF file installed on your PC.

Create DVD

Creates DVD video discs using any video/picture files from Everio.

(Important) Before You Start:

Before you start this operation, make sure to check and perform the following:

1. Connect Everio to a PC via a USB cable. Then select the [View from PC] item at the top of the menu page in Everio to make sure the connection is established properly.
2. Make sure the DVD drive used for burning is properly selected on the PowerCinema Settings page. When more than one burning device exists in your environment, the intended drive may not be selected as the target burning device.
3. Insert a recordable DVD disc in the DVD drive used for burning.

1 Main Menu Page



Select [Create DVD] on the Main Menu.

Note: When a large amount of data is stored in Everio, it may take some time to display the next page.

2 Add Videos Page (1)



Displays a list of thumbnails of video files in Everio.

Note: When Everio is connected for the first time, or a large amount of data is stored in Everio, it may take some time to display thumbnails or the next page.

3 Add Videos Page (2)



Click the checkbox to place a checkmark next to the files you want to burn to a DVD.

Clicking the [Select All] button places checkmarks in all checkboxes next to each file. At this point, the [Select All] button changes to [Deselect All]. Clicking the [Deselect All] button removes all checkmarks from the checkboxes next to each file.

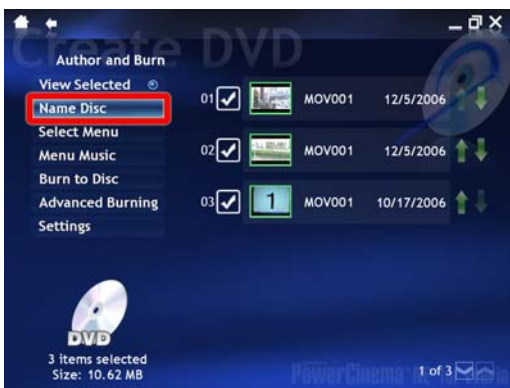
Clicking the [More Videos] button allows you to select video files in media other than Everio. Clicking the [Add Pictures] button allows you to select pictures in Everio.

4 Add Videos Page (3)



After completing your selection, click the [Author and Burn] button.

5 Author and Burn Page (1)



Click the [Name Disc] button, and enter the menu title name from your keyboard or the virtual keyboard.

Note: "My Videos" is set as the default title name at program start-up.

6 Author and Burn Page (2)



Click the [Select Menu] button to choose the menu type. The selected menu is displayed at the bottom left of the page.

7 Author and Burn Page (3)



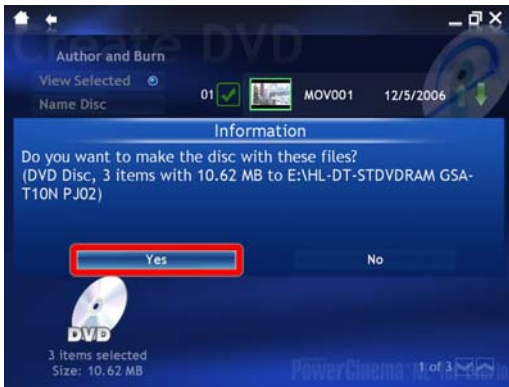
Click the [Menu Music] button to choose a sound file used as BGM, if necessary. Supported sound file types are WAV, MP3 and WMA.

8 Author and Burn Page (4)



Finally, click the [Burn a Disc] button.

9 Author and Burn Page (Burning 1)



The [Information] dialog appears. Check the displayed information and click the [Yes] button. Clicking the [No] button will return to the page that was displayed before you pressed the [Burn a Disc] button.

10 Author and Burn Page (Burning 2)



Preprocessing and authoring is automatically performed, followed by the burning process.

11 Burning Page



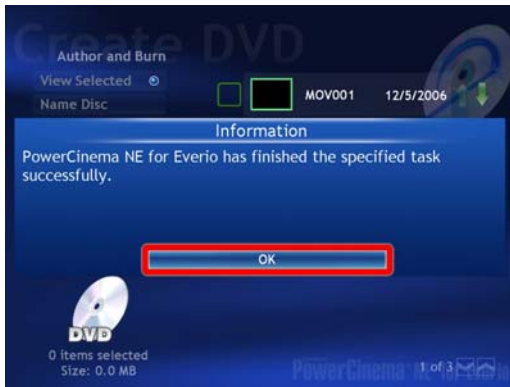
During the burning process, the degree of progress is indicated on the progress bar.

Note: The degree of progress shown is only a rough indication. Immediately before burning is completed, the degree of progress may halt for a while. In such a case, please wait until the process is completed.

To cancel the process, press the [Stop] button.

Note: Pressing the [Stop] button during disc burning may cause the disc to be unusable. There also may be cases where the [Stop] button does not respond immediately.

12 Burning Complete Page



This page will be displayed when burning is completed. Clicking the [OK] button will return to the page that was displayed before you pressed the [Burn a Disc] button.

Burning Pictures to DVD

To create a DVD using picture files, click the [Add Pictures] button on the [Add Videos] page. A list of thumbnails of picture files in Everio is displayed. Selection of multiple picture files will always be handled as a single slide show.

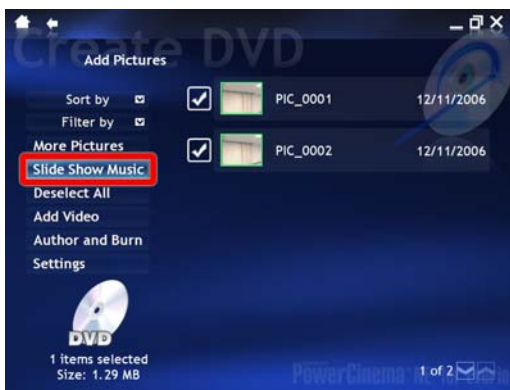
13 Add Pictures Page (1)



Click the checkbox to place a checkmark next to the files you want to burn to a DVD.

Clicking [More Pictures] allows you to select picture files in media other than Everio.

14 Add Pictures Page (2)



You can choose [Slide Show Music] from the [View Selected] menu. The [Slide Show Music] button appears when a check mark is attached to a picture.

15 Add Pictures Page (3)



After completing the selection, click the [Add Videos] button to return to the [Select Video] menu, or select the [Author and Burn] menu. Proceed to the [Author and Burn] menu.

Advanced Burning

16 Advanced Burning (PowerProducer)

Clicking the [Advanced Burning] button on the [Author and Burn] page opens the DVD creation software PowerProducer.

Note: Even though video and slideshow content are handed over to PowerProducer, all other required settings must be set accordingly.

Direct DVD

This feature allows you to create a DVD disc composed of videos or pictures newly recorded with Everio through a simple operation. A DVD can be created from files recorded in Everio. However, any video files and pictures burned to a DVD using this feature cannot be used here as DVD material.

Recorded files used to create this DVD will remain on the Everio hard disk drive, and will not be copied as a backup file to the PC. Therefore, it is recommended that you copy the files to the PC for backup purposes.

Before you begin, connect Everio to a PC via a USB cable. You must also insert a recordable DVD disc in the DVD drive used for burning. Electrical power source for Everio should be supplied by an AC adapter.

1 Main Menu



Click [Direct DVD] on the Main Menu.

When a large amount of data is stored in Everio, it may take some time to display the next menu.

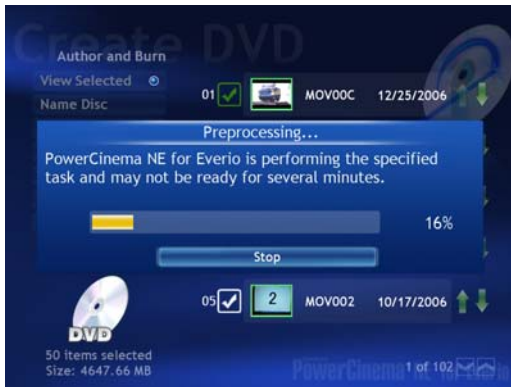
2 Importing Files Page



The process of reading in, or importing, of recorded files from Everio begins. Videos and pictures to be burned to a DVD are selected automatically. In cases where a DVD disc is not inserted in the burning device or an already burned disc is inserted, an [Information] dialog will appear. Follow the instructions in the dialog and perform any necessary operation accordingly. To halt during process, press the [Stop] button. Returns to the Main Menu.

Note: Depending on the file size or number of files, this process may take a substantial amount of time to be completed. There may be cases where the progress bar seems to change slowly or come to a halt, even though the process is still ongoing. In such a case, please wait until the process is complete. (Please wait up to 10 minutes, even if the page remains unchanged).

3 Author and Burn Preprocessing Page

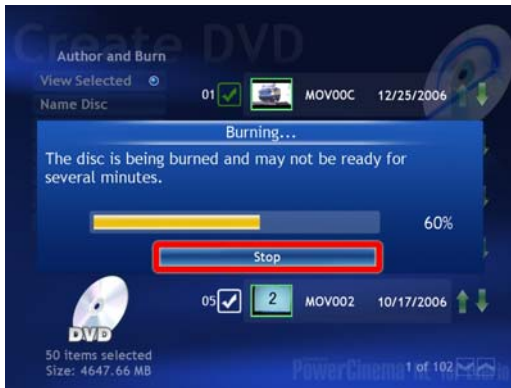


After the files are imported, preprocessing and authoring is performed, followed by the burning process.

To halt the process, press the [Stop] button. Returns to the Main Menu.

Note: After import, the page may remain unchanged for a while. In such a case, process is still ongoing so please wait until it is complete (for several minutes).

4 Burning Process Page

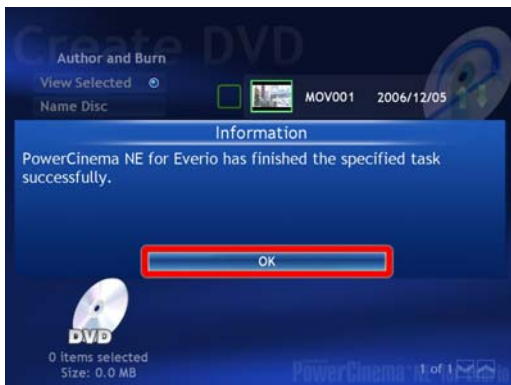


During the burning process, the degree of progress is indicated on the progress bar.

The degree of progress shown is only a rough indication. Immediately before burning is complete, the progress bar may seem to change slowly or come to a halt. Please wait until the process is complete.

To halt the process, press the [Stop] button. Returns to the Main Menu.

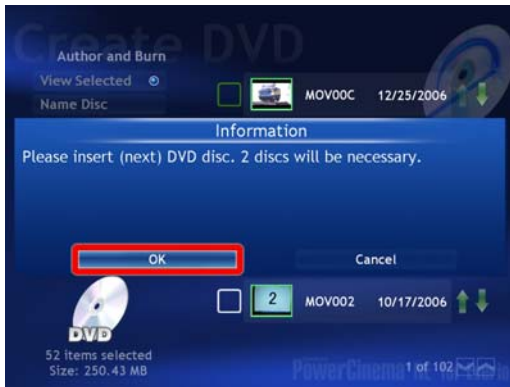
5 Burning Complete Page



When burning has completed, click the [OK] button to return to the Main Menu.

When the number of files exceeds 50 or the file size exceeds approximately 4,300MB for the burning process, a dialog requesting additional discs will be displayed after the first disc is ejected.

6 Insert Next DVD Disc Page

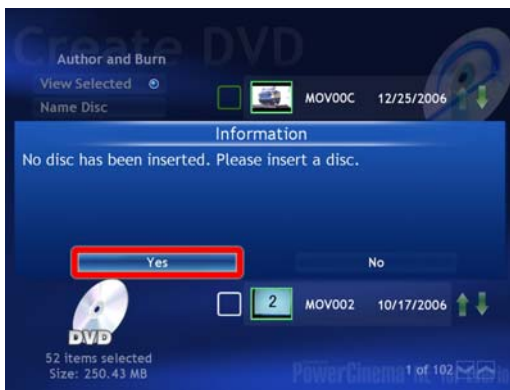


This dialog is displayed when multiple discs are required for burning.

When the number of files exceeds 50 or the file size exceeds approximately 4,300MB for the remaining burning process, a dialog will indicate the number of additional discs required.

If you press the [Cancel] button at this point, the burning process will stop and return to the Main Menu. The next time you use the Direct DVD feature, burning will be performed only on the remaining files, or files not used during the previous process to create a DVD.

7 Disc Erase Confirmation Dialog

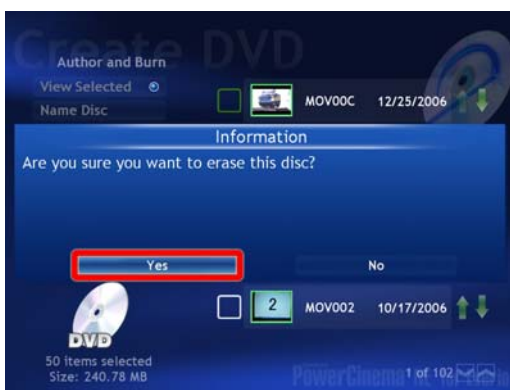


This dialog appears when an unerasable disc is inserted.

To erase the disc, press the [OK] button. The erase process begins. If you do not wish to erase the disc, press the [No] button and eject the disc.

Note: After the erasing process, the disc will be ejected and generally be reinserted. However, in some PCs, such as laptops, the disc may not be reinserted automatically. In such a case, please insert the disc manually.

8 Dialog When Inserting a Non-Erasable Disc



This dialog appears when a disc that is not blank and cannot be erased is inserted.

Press the [OK] button and eject the disc.

Note: In applications such as PowerCinema, canceling a previous burn process may cause an erase operation to fail during the next burn process. In such a case, perform an erase operation using the disc utility feature provided by the accompanying PowerProducer.

Backup

This feature allows you to create a backup (copy) of video/picture files from Everio's hard disk to a PC.

This backup process copies only those video/picture files newly recorded after the previous backup operation. The original video/picture files will remain on Everio's hard disk after performing backup. Before you begin, connect Everio to a PC via a USB cable. You must also set the PC backup folder settings before you perform a backup. If you are using the same location as the destination for backup, you do not need to change any settings. However, we recommend that you check the available free space of the destination.

1 Main Menu



Click [Backup] in the Main Menu.

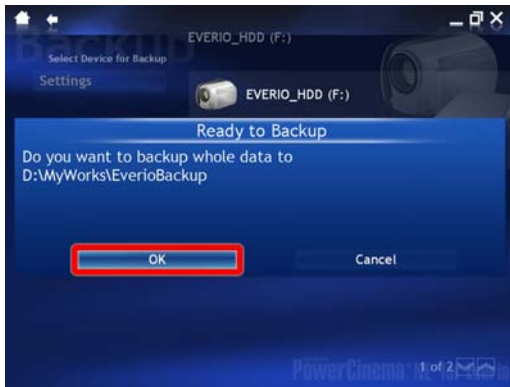
2 Select Drive Page



Click Everio's hard disk drive [EVERIO_HDD] for backup.

The drive is displayed (Depending on the HDD size, it may take some time to complete the process).

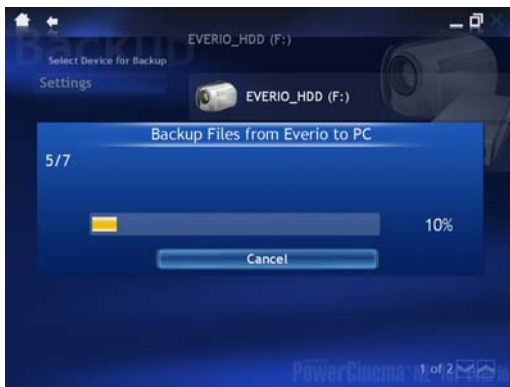
3 Backup Start Page



The [Ready to Backup] confirmation dialog appears. Check the destination folder and click the [OK] button.

To change the destination for backup, first press the [Cancel] button, then press the [Settings] button to change the location. (Refer to the "Backup Folder" section in "Settings (Backup)" of "Reference".) Click Everio's hard disk drive [EVERIO_HDD] for backup.

4 Backup Processing Page



Backup from Everio to the PC begins.

The number of files to be backed up, along the progress bar is displayed.

When backup is complete, click the [Home] button on the top left of the page to return to the Main Menu.

To display or play videos or pictures that were backed up, click the [Browse Videos] or [Browse Pictures] menu, and select the backup folder to view those files.

Reference

Main Menu

1 Settings



Allows you to set the environment settings for PowerCinema. Generally, you do not have to change these settings since they are set accordingly to your environment during installation.

2 Item Description



Displays a simple description when the mouse cursor is placed over an item.

3 Tutorial



Internet connection is required to use the Tutorial.

4 Browse Videos



Plays video files (extension: MOD) from Everio.

5 Browse Pictures



Displays picture files (extension: JPG) from Everio.

6 Copy/Edit



Allows you to copy video and picture files from Everio, or edit these files with the accompanying video editing application software (PowerDirector 5 Express NE).

7 Create DVD



Creates DVD video discs using video/picture files from Everio.

8 Direct DVD



Creates DVD video discs directly from video files recorded in Everio.

9 Backup



Backups video/picture files from Everio to a PC.

Navigation Control

The Navigation Bar displayed at the top of the screen consists of several buttons used to operate PowerCinema.

10 Home



Click this icon to return to the Main Menu page.

11 Previous



Click this icon to return to the previous page.

12 Minimize



Minimizes the window in PowerCinema.

13 Maximize



Maximizes (displays in full screen) the window in PowerCinema.

14 Close



Exits PowerCinema.

Settings (Main Menu)

1 Main Menu



Selects the [Settings] mode. Selecting [Settings] in the Main Menu page will display the Settings page for PowerCinema.

**Generally, you do not have to change these settings since they are set accordingly to your environment during installation.*

2 [Settings] mode page - Copy/Edit



Specifies the destination folder to copy the recorded data.

3 [Settings] mode page - Create DVD



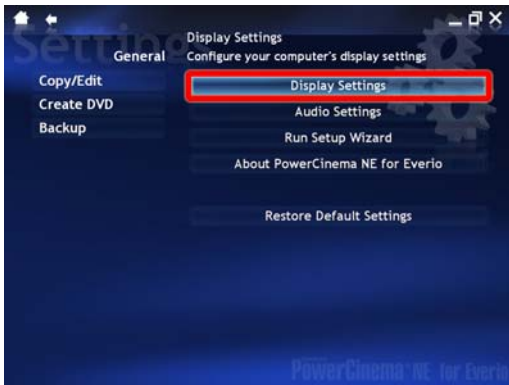
Sets the PowerCinema burning operation settings.

4 [Settings] mode page - Backup



Sets the backup operation settings for the recorded data in Everio.

5 [Settings] mode page - Display Settings



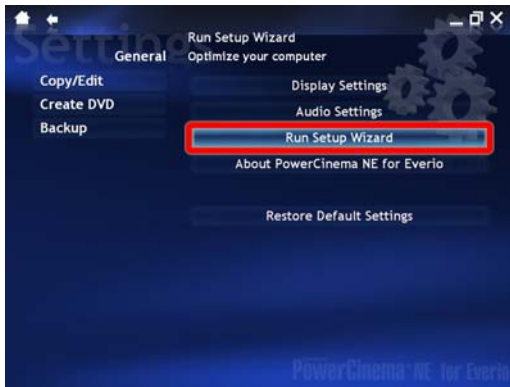
Sets the [4:3] or [16:9] display settings.

6 [Settings] mode page - Audio Settings



Sets the audio settings for the DVD disks to be created.

7 [Settings] mode page - Setup Wizard Settings



Allows you to set the display and audio settings, and register the product.

8 [Settings] mode page - About PowerCinema NE for Everio



Displays the PowerCinema version information.

9 [Settings] mode page - Restore Default Settings



Restores all settings to their original values set at installation of PowerCinema.

Settings (Copy/Edit)

1 Settings Menu Page



Click the [Copy/Edit] button.

2 Destination Copy Folder Settings Page - Selecting the [Destination Copy Folder]



Click the destination copy folder item, and specify a drive and folder.

3 Destination Copy Folder Settings Page - Pressing the [Apply] Button



Press the [Apply] button.

4 Destination Copy Folder Settings Page - [Load Default Settings]



To return settings to their default values, press the [Load Default Settings] button. The [Copy/Edit] Settings will return to their default values (at the time of installation). The default is the EverioCopy folder in the MyWorks folder.

Settings (Create DVD)

1 Settings Menu Page



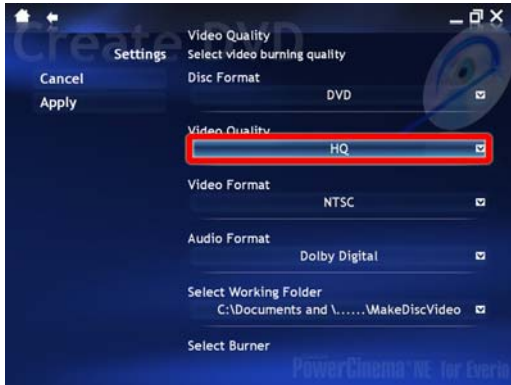
Sets the PowerCinema DVD burning operation settings. Click the [Create DVD] button.

2 Disc Format



This version supports the [DVD] (DVD Video) format only.

3 Video Quality



There are three modes you can select from: HQ (Best), SP (Standard Play) or LP (Long Play). Generally, leave the HQ mode selected. [HQ (Best)] is set as the default mode.

Note: Creating a DVD in SP or LP mode from material recorded in modes such as ULTRA may require a long time and/or may cause some video quality distortion. Unless you need to burn a large volume of material in a single disc, it is recommended to create the disc in HQ mode. The following is an indication of video recording time allowed on a single DVD. (Actual recording time may be shorter than indicated due to conditions such as title number restrictions.)

Mode	Single Layer	Dual Layer
HQ (Best)	approx. 1 hours 00 minutes	approx. 2 hours 00 minutes
SP (Standard)	approx. 2 hours 00 minutes	approx. 4 hours 00 minutes
LP (Long)	approx. 4 hours 00 minutes	approx. 8 hours 00 minutes

4 Video Format



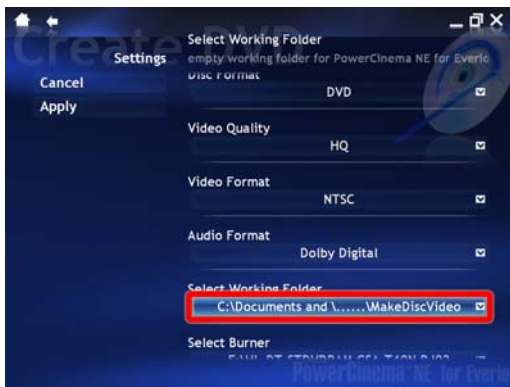
There are two video signal formats you can select from: NTSC or PAL. The default format is set to the same format as the camcorder's signal format.

5 Audio Format



There are two audio formats you can select from: Linear PCM or Dolby Digital. [Dolby Digital] is set as the default format.

6 Select Working Folder



Sets the working folder to create DVDs. Generally, you do not have to change these settings since they are set accordingly to your environment during installation. The default folder is set to the MakeDiscVideo folder automatically created in the C drive My Document folder. The disc may not be created successfully if there is not enough free space available on C drive. Specify a folder on another drive with more than 10GB of free space (or 20GB for Dual Layer (DL) DVDs).

7 Select Burner



Sets the DVD drive used to burn a DVD disc.

PowerCinema supports the following list of DVD media:

- DVD-R
- DVD-RW
- DVD+R
- DVD+RW
- DVD-RDL
- DVD+RDL

Make sure you are using the correct media supported by the DVD drive installed in your computer.

8 Load Default Settings



The [Create DVD] Settings will restore to their default values (at the time of installation).

9 [Cancel]/[Apply]



Left mouse click on the [Apply] button to confirm the settings. To cancel the settings, left click the [Cancel] button.

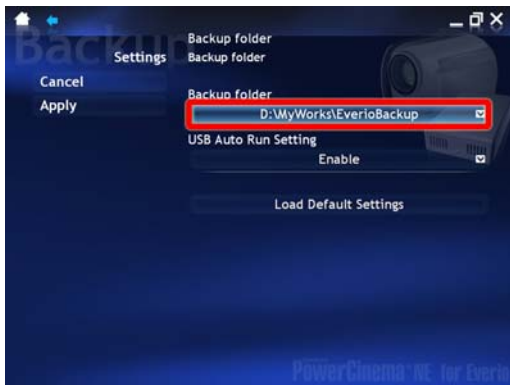
Settings (Backup)

1 Settings Menu Page



Sets the backup (copy) operation settings for the Everio media (EVERIO_HDD/EVERIO_SD). Click the [Backup] button.

2 Backup Folder



Specify the destination drive and folder for backup. Generally, you do not have to change these settings since they are set accordingly to your environment during installation. The default is set to "EverioBackUp" in the MyWorks folder automatically created in the drive with the largest free space available. To change the drive and folder, click the item section to select the folder, then press the [Apply] button. Refer to the operation explained in the "Copy/Edit" section in "Reference".

3 USB Auto Run



Sets the PowerCinema auto run via the Everio button menu.

- Enable: Enables auto run.
- Disable: Disables auto run.

[Enable] is set as the default setting.

Note: There are a very few cases where it is not set to [Enable]. If not, select [Enable] and then press the [Apply] button to enable auto run.

When set to [Enable], the followings operations via Everio can be achieved.

To view on a PC:

PowerCinema opens and displays the main menu.

To create a DVD:

PowerCinema opens in [DVD Direct] mode, which allows you to create a DVD.

To perform a backup:

PowerCinema opens in [Backup] mode, which allows you to perform a backup.

Direct DVD:

PowerCinema's [Direct DVD] feature opens to automatically create a DVD.

Direct Backup:

PowerCinema's [Direct Backup] feature opens to automatically start a backup.

***Refer to the Everio Instruction Manual for details.**

4 Load Default Settings



The [Backup] Settings will restore to their default values.

5 [Cancel]/[Apply]



Click on the [Apply] button to confirm the settings. To keep the values prior to setting, without confirming the new settings, click the [Cancel] button.

Settings (Display Settings)

1 Settings Menu Page



Click [Display Settings].

Sets the [4:3] or [16:9] display settings. Click the [Display Settings] button.

2 [Screen Ratio]



Select either [4:3] or [16:9] for the screen ratio.

4:3

Selects the [4:3] display.

16:9

Selects the [16:9 (Widescreen)] display.

The [Currently Used Display] is set as the default screen ratio.

Note: When the currently used display ratio is neither 4:3 nor 16:9, the closer ratio will be selected.

3 16:9 (4:3) Movie Display Type



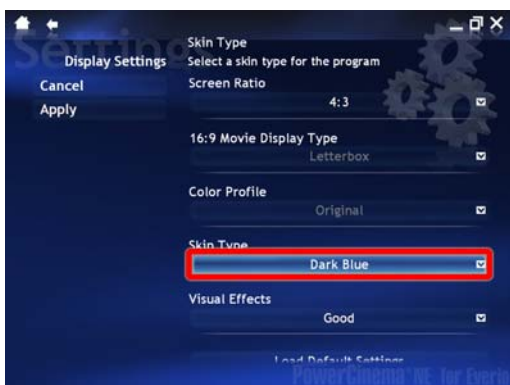
(These settings cannot be changed.)

4 Color Profile



(These settings cannot be changed.)

5 Skin Type

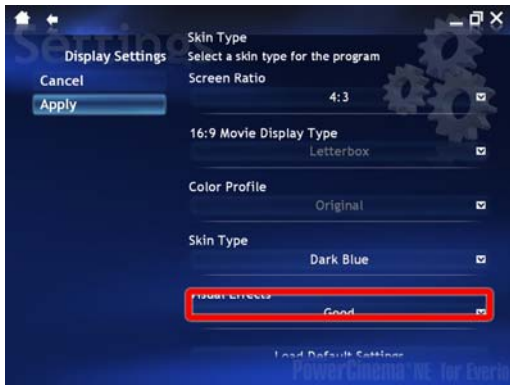


The overall color of PowerCinema can be selected from or changed to the following five types.

Dark Blue, Blue, Purple, Green, Red

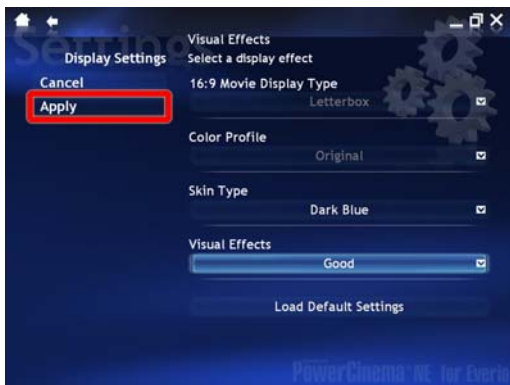
[Dark Blue] is set as the default color.

6 Load Default Settings



[Display Settings] will restore to their default values.

7 [Cancel]/[Apply]



Left mouse click on the [Apply] button to confirm the settings. To cancel the settings, left click the [Cancel] button.

8 Visual Effects

Display method of PowerCinema can be changed.

Off:

Disables [Visual Effects].

Good:

Enables [Visual Effects].

Best:

Enables [Visual Effects] with an advanced display feature.

Auto:

Automatically sets the display mode appropriate for your PC. Generally, [Best] will be selected.

[Good] is set as the default display method.

Note: These items will only be selectable when 128MB or more VRAM is available.

Note: For some models, selecting [Best] or [Auto] may not achieve correct display. For these cases, select [Good] or [Off].

Settings (Audio Settings)

1 Settings Menu Page



Sets the PC audio features. Click the [Audio Settings] button.

2 Speaker Environment



Sets the environment options for speakers, headphones and digital audio output [SPDIF].

- Headphones:
select when using headphones
- SPDIF:
select when using digital audio output
- 2 Speakers:
select when using stereo speakers

[Headphones] is set as the default settings.

3 Output Mode



Specifies the audio effects (surround audio process).

- Stereo:
Outputs in stereo audio.
- Doby Surround:
Outputs in Dolby Surround.

[Stereo] is set as the default settings.

4 Audio Channel Expander



(These settings cannot be changed.)

5 Dynamic Range Compression



There are three options you can select from. Choose the one appropriate for your listening environment.

- Normal Environment
- Quiet Environment
- Noisy Environment

[Normal Environment] is set as the default setting.

6 Load Default Settings



[Audio Settings] will restore to their default values.+

Settings (Setup Wizard)

1 Settings Menu Page



Click the [Run Setup Wizard] button.

2 What is the screen ratio of your display device?



Selects the screen ratio. Select either [Normal (4:3)] or [Widescreen (16:9)].

When you have selected the screen ratio, click the [Next] button.

3 What is your computer's speaker environment?



Select a speaker environment by clicking an item.

- Headphones:
select when using headphones
- SPDIF:
select when using digital audio output
- 2 Speakers:
select when using stereo speakers

When you have selected the speaker environment, click the [Next] button.

4 Product Registration



Input your first and last name, and your Email address.

Check the [I want to receive the CyberLink Newsletter] box if you would like to receive newsletters from CyberLink.

When you have completed all the fields, click the [Next] button.

5 Setup Complete



You have now completed the setup. Click the [Complete] button.

Settings (About PowerCinema NE for Everio)

1 About PowerCinema NE for Everio



Displays the PowerCinema NE for Everio version information. Click the [About PowerCinema NE for Everio] button.

2 [About] Page



To exit this page, click the [Back] button.

Browse Videos

1 Main Menu



PowerCinema allows you to browse video files (extension: MOD only) from Everio, removable devices and your PC's hard drive. Click [Browse Videos] on the Main Menu page.

2 [Select Device] Button



A list of available devices and backup folders is displayed.

3 [Back] Button



Returns to the Main Menu.

4 [Page Up]/[Page Down] Button



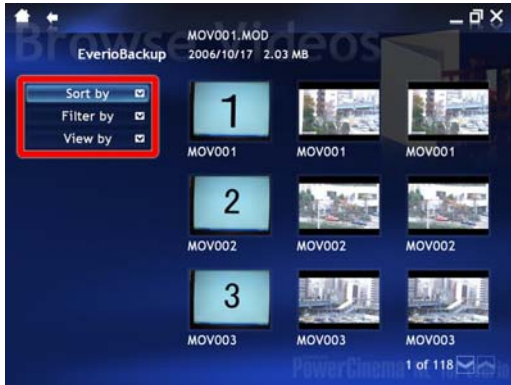
Press this button to scroll up or down the list to display all devices within the list.

5 Video Thumbnail/Folder Index



Screen that displays a list of folders/video files, and video files to browse. Click a thumbnail to browse the video.

6 Feature Buttons



[Sort by]

Selecting [Sort by] will change the order of video file thumbnails by name or date.

[Filter by]

Selecting [Filter by] will narrow down video file thumbnails by the specified event or date.

When selecting [Event] from [Filter by], event names will be displayed based on the event information selected during the recording with Everio.

Note: Both filters cannot be selected at the same time.

Note: Refer to the Everio Instruction Manual for details on how to use event names during recording.

Example of displayed filters

[Filter by]	[All]				
	[Event]	→	TRAVEL		All
			ATHLETIC EVENT	→	1
			WEDDING		2
			:		3
			:		
	[Date]	→	Year	→	Month

[View by]

Selecting [View by] will change the number of displayed thumbnail icons.

Note: The number of selection items will vary according to the screen resolution settings.

7 [Page Up]/[Page Down] Button















Displays all folders/video files within the list by scrolling up or down the list.

8 Video File Browse Page



This page can be operated with the control buttons located on the bottom left of the page.

	Stop	Stops video play. Clicking this button will return you to the video thumbnail display page.
	Play	Resumes video play.
	Pause	Pauses video play.
	Previous	Returns to the previous video.
	Rewind	Rewinds the video in play.
	Fast forward	Fast forwards the video in play.
	Next	Proceeds to the next video.
	Volume up	Increases the volume of the video in play.
	Speaker on/off	Mutes the audio of the video in play.
	Volume down	Decreases the volume of the video in play.
	Snapshot	A snapshot (JPEG format) of a video image frame in play can be taken and saved to the "Video Snapshot" folder of the My Pictures folder in the My Document folder.
	Always On Top	Video browsing image window will always be displayed in front of all other programs. To cancel this feature, double-click within the window playing the video.

Browse Pictures

1 Main Menu



Displays pictures to browse. PowerCinema allows you to browse picture files (JPEG format only) from Everio, removable devices and your PC's hard drive individually or as a slideshow.

2 [Select Device] Button



A list of available devices and backup folders is displayed.

3 [Back] Button



Returns to the Main Menu.

4 [Page Up]/[Page Down] Button



Press this button to scroll up or down the list to display all devices within the list.

5 Picture Thumbnail/Folder Index



Screen that displays a list of folders/picture files, and picture files to browse. Click a thumbnail to browse the picture.

6 Feature Buttons



[Sort by]

Selecting [Sort by] will change the order of picture file thumbnails by name or date.

[Filter by]

Selecting [Filter by] will narrow down picture file thumbnails by the specified date.

Note: Only items that exist will be displayed.

[Filter by]		[All]				
	→	[Date]	→	Year	→	Month

[View by]

Selecting [View by] will change the number of displayed thumbnail icons.

Note: The number of selection items will vary according to the screen resolution settings.







7 [Page Up]/[Page Down] Button



Displays all folders/picture files within the list by scrolling up or down the list.

8 Picture Browse Page



	Stop	Stops display of pictures and returns you to the thumbnail page.
	Play/Pause	Pictures are displayed as a slideshow. When all pictures have been displayed, it returns to the first picture to continue display. Pauses slideshow display.
	Previous	Displays the previous picture.
	Rewind	You can fast rewind during picture slideshow play. Each time the button is pressed, play speed will change accordingly.
	Fast forward	You can fast forward during picture slideshow play. Each time the button is pressed, play speed will change accordingly.
	Next	Displays the next picture.

Copy/Edit

1 Main Menu



Performs a copy/edit of the video or picture. PowerCinema allows you to easily copy video or picture files from Everio or a removable device connected to a PC, to a PC hard drive.

Click [Copy/Edit] in the Main Menu.

2 [Select Device] Button



A list of available devices and backup folders is displayed.

3 [Settings] Button



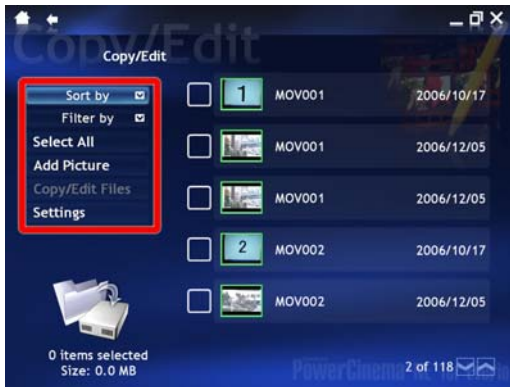
Sets the destination copy folder.(Refer to the "Settings (Copy/Edit)" section for details.)

4 [Page Up]/[Page Down] Button



Press this button to scroll up or down the list to display all devices within the list.

5 Feature Buttons



[Sort by]/[Filter by]

Allows you to change the order of files in the list and display search results.

**Refer to the [Browse Videos] and [Browse Pictures] sections for details.*

[Select All]

(Displayed when all files are selected.)

Selects the currently selected folder (or device) or all files.

[Deselect All]

Deselects all selected files in the file list.

[Add Picture]

Switches to the picture file selection page.

[Copy/Edit]

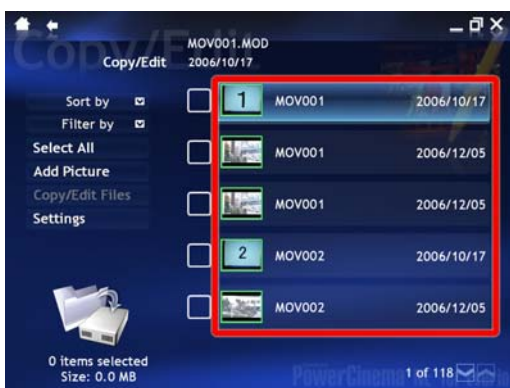
Checking the file checkbox will enable the buttons, and return to the confirmation page for the selected files.

[Settings]

Changes the destination copy folder.

**Refer to the "Settings (Copy/Edit)" section for details.*

6 File List Display



This is the folder/file selection page. Clicking a file item section will start play.

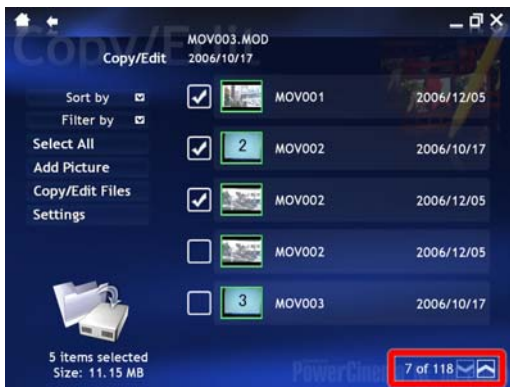
**Refer to the [Browse Videos] and [Browse Pictures] sections for details.*

7 Checkbox



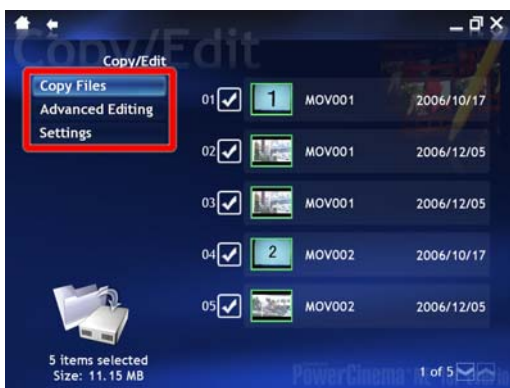
To select a file, click the appropriate checkbox to place a checkmark.

8 [Page Up]/[Page Down] Button



Use this button to scroll the page up or down to display any folders/files not shown in the contents browsing area.

9 Feature Buttons



[Copy Files]

Starts copying the selected files.

[Advanced Editing]

PowerDirector Express receives the selected file for editing. Left clicking this button with the mouse will automatically start PowerDirector Express.

[Settings]

Specifies the destination copy folder.

**Refer to the "Settings (Copy/Edit)" section for details.*

Create DVD 1

1

Main Menu



Creates DVD video discs using any video/picture files from Everio.

Click the [Create DVD] button in the Main Menu.

2 Feature Buttons



[Sort by]/[Filter by]

Allows you to change the order of files in the list and display search results.

**Refer to the [Browse Videos] and [Browse Pictures] sections for details.*

[Select All]

Selects the currently selected folder (or device) or all files.

[Deselect All]

Deselects all selected files in the file list. (Displayed when all files are selected.)

[Author and Burn]

Checking the file checkbox will enable the buttons, and return to the confirmation page for the selected files.

[Settings]

Sets various setting options for DVD disc.

**Refer to the "Settings (Create DVD)" section for details.*

File List Display

This is the folder/file selection page. Clicking a file item section will start play.

**Refer to the [Browse Videos] and [Browse Pictures] sections for details.*

Checkbox

To select a file, click the appropriate checkbox to place a checkmark.

[Page Up]/[Page Down] Button

Use this button to scroll the page up or down to display any folders/files not shown in the contents browsing area.

[Add Picture]

Selects the picture file.

3 [Add Picture] Page



In the previously explained [Add Video] page, clicking [Add Picture] will display the [Add Picture] page.

Selected pictures are linked together to form a single slideshow video.

Note: This operation will not affect the original picture files.

- [Sort by]:
select sort to be performed by name or date.
- [Filter by]:
Specify the condition to display thumbnails.
 - [All]:
Displays all without filtering.
 - [Date]:
Displays by date.

[More Pictures]: Pictures in media other than Everio can be selected.

[Add Video]: Returns to the [Select Video] menu.

[Slide Show Music]: Select a picture (image) in [Add Picture] in order to use [Slide Show Music].

4 Slide Show Music Selection Page



Displays all available devices/folders. Click a sound file in the folder to set this option.

If you do not need any slideshow music, click [Remove Music].

5 [Author and Burn] Page



In the [Add Video] or [Add Picture] page, clicking [Author and Burn] will display this page.

[Name Disc]:

Input the menu title.

[Select Menu]:

Select the menu screen.

[Menu Music]:

Select the music for the menu screen.

These settings may be omitted. Refer to the "Setting the DVD Menu" section in "Create DVD 2" for details on these settings.

[Create DVD]:

Proceeds to the next step, "Create DVD."

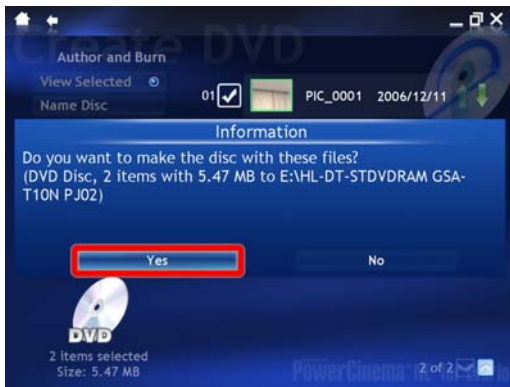
[Advanced Burning]:

Opens PowerProducer, the other accompanying DVD creation software.

[Settings]:

[Create DVD Settings] page is displayed. (Refer to the "Settings (Create DVD)" section for details.)

6 Dialog Page to Start Creation



[Yes]:

Starts DVD creation.

[No]:

Returns to the previous page.

7 Dialog Page During Authoring (DVD Creation Process)



[Preprocessing], [Author] and [Burn] processes are performed.

[Stop]:

Returns to the page prior to the creation operation.

Create DVD 2

1 DVD Menu Settings



- [Name Disc]: Specify the menu screen title.
- [Select Menu]: Select the menu screen.
- [Menu Music]: Specify the music to play during menu screen display.

2 Name Disc Settings Page (1)



Pressing [Name Disc] in the [Author and Burn] page will display this page.

To input text, click the title name under the menu title on the right side. Input text with the PC keyboard.

Clicking the virtual keyboard section will display an alphanumerical keyboard on the page. You can now input text using the mouse.

3 Name Disc Settings Page (2)



When you have completed text input, press the [Enter] key.

4 Virtual Keyboard Display Page



When you have completed text input, press [Enter].

5 Select Menu Page (1)



Pressing [Select Menu] in the [Author and Burn] page will display this page.

Select by clicking an appropriate menu from the various genres listed.

6 Select Menu Page (2)



Click any image from the selected genre. Clicking the image will display it on the bottom left of the page.

7 Select Menu Music Page (1)



Pressing [Menu Music] in the [Author and Burn] page will display this page.

Select the drive/folder.

8 Select Menu Music Page (2)



Select by clicking a sound file you prefer.

9 Select Menu Music Page (3)



To deselect any selected sound files, click [Remove Music].

Note: Clicking [Remove Music] will not delete the original sound file.

When no sound files are selected, no sound will be played during DVD menu display.

Direct DVD

1 Main Menu



Creates a DVD video disc directly and easily from Everio.

Click [Direct DVD] in the Main Menu.

2 Importing Page



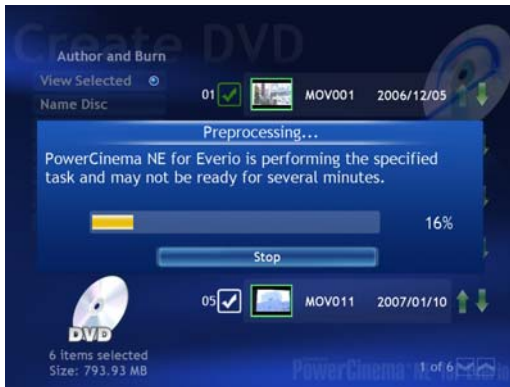
When Everio is connected, video files recorded on the Everio hard disk will be read in. This process is called "file import."

Note: It may take some time to import numerous files or a large file.

Note: The file import process does not create a copy of the video file to the PC. Therefore, we recommend you create a copy of a file to the PC using the backup (copy) feature.

[Stop]: Returns to the Main Menu.

3 Preprocessing Page



Following file import, the preprocessing and authoring processes will be performed.

[Stop]:
Returns to the Main Menu.

4 Burning Page



The burning process starts. The burning progress is indicated on the progress bar.

[Stop]:
Returns to the Main Menu.

Backup

1 Main Menu



Backs up video/picture files easily from Everio.

Select [Backup] on the Main Menu.

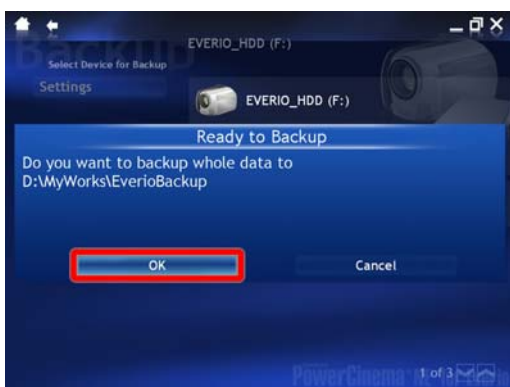
2 Select Device for Backup Page



Displays all devices available for backup.

Click [Device for Backup].

3 Ready to Backup

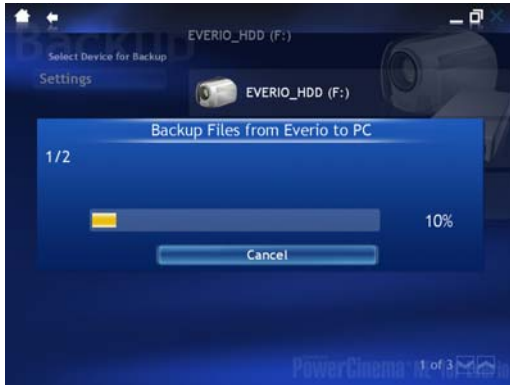


The confirmation dialog [Ready to Backup] is displayed, then a destination folder to save the backup file is displayed.

[OK]: Starts backup.

[Cancel]: Returns to the Main Menu.

4 Backup Files from Everio to PC



When backup starts, the progress is indicated on the progress bar.

[Cancel]:
Returns to the Main Menu.

About the Backup Folder

A "backup folder" is the destination folder where the backed up file is placed when using the [Backup] feature in PowerCinema.

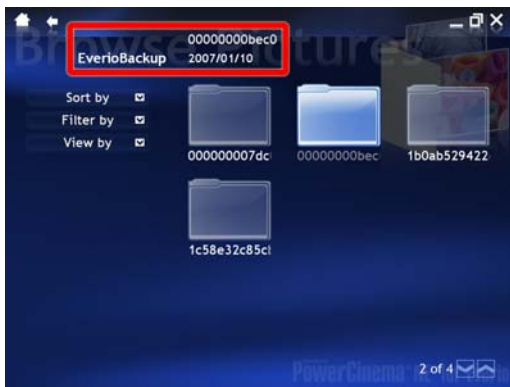
The following provides information about the backup folder.

1 Playing Device Selection Page (Example)



When you click the backup folder, all video (picture) files included in the backup folder are displayed. Generally, all folders and files contained in the backup folder are handled collectively, so you should not be concerned.

2 Actual Folder Inside the Backup Folder (Example)



A folder with a name consisting of 12 alphanumeric characters is created in the backup folder.

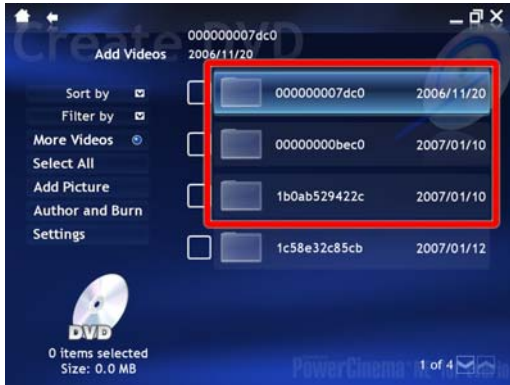
Folder information is displayed at the top of the page. Find the target file by dates when folders were created.

A folder is backed up to the same folder containing all data recorded after formatting the Everio hard disk or SD memory card. Video and picture files will be backed up to different folders.

Note: Make sure you format the Everio built-in hard disk and SD memory card via Everio.

The left screen shows an example of an actual folder inside the backup folder. This example displays the location of the actual backup folder (folder name: EverioBackup) by drilling down through folders from the drive where it is stored.

3 [Create DVD] Backup Folder Contents (Example)



When performing [Copy/Edit] or [Create DVD], the folder name and creation data information is displayed in the right side of the page.

File Type	File Name	Description
Folder	(Folder Name)	
Videos	PRG###	Files with extension "MOD"
Pictures	###JVCSO	Files with extension "jpg"

* ### indicates a three digit numeral. (example: PRG001.MOD, 100JVSO.JPG)

Reference Material

FAQ

Questions	Answers
Folder or file names are abbreviated or not shown in its entirety.	If text, such as on buttons, is not displayed in its entirety, moving the mouse cursor over the button will scroll to display the full text. In some cases, the same text may be displayed at the top of the page.
I cannot view the [Tutorial].	To view the [Tutorial], an Internet connection is required. If you cannot establish an Internet connection frequently, a PDF file of the [Tutorial] is also provided. You can download this PDF file beforehand, if your Internet connection speed is slow. The PDF file can be found at the same location as the [Tutorial].
How to view the [Tutorial] while using the software.	If you cannot establish a constant Internet connection, click the [Tutorial] when connected to the Internet, and then download the PDF file that will be displayed along with the [Tutorial] for future reference. If you are able to establish a constant Internet connection, open the [Tutorial] from the Main Menu to reference while using the software.
I cannot browse the DVD video created with PowerCinema NE for Everio on my PC.	To browse a DVD video on your PC, a DVD drive and DVD playing software are required. The DVD video can also be played on commercially available DVD players.
I cannot play the DVD video disc created with PowerCinema NE for Everio on a DVD player or video disc recorder.	There are very few cases where a DVD video created with a PC cannot be played on a DVD device due to the device's specification or capabilities.
After I press a button on Everio or choose the USB menu, the dialog "What do you want Windows to do?" appears before PowerCinema NE for Everio opens.	Do not perform any operation at this point. If PowerCinema is starting up, wait until it is complete before performing any operation.

Browse Videos

Questions	Answers
During [Browse Videos], a black page appears for several seconds when proceeding to the next file.	It may take some time each time a new file is being accessed.
I cannot browse a video file burned with PowerDirector 5 NE Express.	PowerCinema can only play video files from Everio (extension: MOD). Any file outputted with PowerDirector must be read into PowerDirector for browsing.
Which folder would snapshots be saved to?	Snapshots (JPEG format) are saved to the "Video Snapshot" folder in "My Pictures" or "My Documents." You can copy or move the folder via "My Computer" or Windows Explorer.
No event items are displayed when using the [Filter by] feature.	To display events when using the [Filter by] feature, events must be registered beforehand and recorded in Everio. Refer to the Everio Instruction Manual for details on how to set events.

Copy/Edit

Questions	Answers
Can a device other than the PC's hard disk drive be specified as the copy destination?	Recording media other than the PC's hard disk drive cannot be specified as the destination for a copied file.
The destination copy folder cannot be found.	If you are using an external hard disk drive as the destination for backup files, check that the same drive letter (i.e., E:, F:) as used previously is set when performing a backup. A drive letter is a letter assigned to identify a storage device (drive). A device is assigned with a single letter from A to Z.
A destination copy folder cannot be created.	When specifying a new folder as the destination, the folder must be created beforehand in Windows.
Is there any way to create a copy to media other than the hard disk drive?	You can create a copy in Windows, such as using Windows Explorer.

Create DVD

Questions	Answers
What type of DVD media can be used?	Use a DVD media type that is supported by the PC's DVD drive. DVD-RAM cannot be used. DVD-R(DL) or DVD+R(DL) that is already burned cannot be used. You cannot add data to DVD-RW or DVD+RW.
Why are there some cases where you can only record to a DVD video disc for a short time.	A single DVD allows burning of files with 50 or less titles, and a total size of 4,300MB (single layer)/7,500MB (dual layer) or smaller.
Can titles be binded?	Use CyberLink PowerProducer to create advanced DVDs that involve creating DVD-VR, binding titles or setting chapters.
Is there a feature to set chapters?	No, you will need PowerProducer to set chapters.
Can a DVD be created in DVD-VR disc format?	No, you will need PowerProducer to create a DVD-VR.
Where can I find CyberLink PowerProducer?	Select [Create DVD] > [Author and Burn] > [Advanced Burning]. PowerProducer opens automatically. To open PowerProducer separately, open the Windows [Start] menu, select [Programs], then [PowerProducer].
Title menu settings are not handed over to PowerProducer.	Title menu settings from PowerCinema's [Create DVD] feature cannot be handed over to PowerProducer.
After editing title menus, the project (edited contents) cannot be saved.	PowerCinema does not provide a feature to save projects (edited contents). You can copy the edited disc with PowerProducer.
After the first disc is created, the software seems to stop all operation.	After the first disc is created, the software is in standby status with the next data selected. Insert the next disc and click the [Burn a Disc] button. You must click the button for each subsequent disc.

Direct DVD

Questions	Answers
I cannot create a DVD video with the [Direct DVD] feature.	The [Direct DVD] feature allows you to create a DVD video by automatically selecting video files from Everio that have never been used to create a DVD. If you need to create a DVD with video files already used to create a DVD with the [Direct DVD] feature, use the [Create DVD] feature.
How much DVD media do I need to create a DVD video composed of approximately 30GB of recorded data in Everio?	This will depend on the number of recorded items stored in Everio. Generally, it takes approximately 8 DVDs. However, depending on the recorded items, you may require up to 100 DVDs.

Backup

Questions	Answers
Which drive is selected as the destination for backup?	The destination drive for backup files is set during installation to the drive with the most available free space. You can change these settings after installation. By selecting [Installation Preference], you can set the destination during installation.
The destination backup folder cannot be found.	This may occur if you are using an external hard disk drive as the destination for backup files, and the drive letter (i.e., E:, F:) is changed each time a connection is established. Check that the same drive letter (i.e., E:, F:) as used previously is set when performing a backup.
Can a device other than the PC's hard disk drive be specified as the backup destination?	The destination backup location can be changed in [Settings]. However, a destination other than the PC's hard disk drive cannot be specified as the location for backed up files.
Setting an external hard disk drive as the backup destination.	There are some cases where an external hard disk drive cannot be specified, when you open PowerCinema without using an external hard disk after specifying that drive as the backup (or save) destination. In such a case, restart PowerCinema with the connection to the external hard disk drive established.
The destination backup folder cannot be created.	When specifying a new folder as the destination, the folder must be created beforehand on the PC. PowerCinema only allows you to specify a folder already created.

Troubleshooting

Questions	Answers
There is no response when pressing a button.	The software may show no response when waiting for a reply from the burning drive. In such a case, please wait until the process is complete. Make sure that the button is clicked only once. Although it may seem that no process is in progress, the process may actually be ongoing. Please wait for the process to be completed, which may take up to 10 minutes.
Progress bar seems to change slowly or come to a halt.	The degree of progress indicated by the progress bar is proportional to the file size. Therefore, when a large file is included in the process, it may seem to be changing slowly. It may also seem slow or actually taking time when performing several processes at once. In either case, please wait until the process is complete. It may take up to one hour to create a disc.
Burner does not exist or cannot be found.	When multiple burning drives (including a CD drive) are connected in your environment, the intended disc drive may not be specified as the target burning drive. If more than one burning drive is connected, including built-in drives, check the drive settings before performing a burn process.
Not enough available free space on the hard disk drive.	When performing backup or copy, space equivalent to the size being backed up or copied must be available on the hard disk drive where the destination folder resides. When creating a DVD, 10GB (or 20GB for dual layer) or more free space is required on the PC hard disk drive where the folder specified as the working space resides.
Copy process is slow.	When multiple files with the same name exist in the destination copy folder, it will take some time to change those file names. We recommend that you specify a new folder as the destination when using this feature.
When browsing a video, the video image stops or does not play smoothly.	Change [Visual Effects] in [Settings] to [Good] or [Off]. Refer to the "Display Settings" section in "Reference" for details. This may also occur when the PC's processing capacity is low.
After inserting a disc with content on it and pressing [OK] in the confirmation dialog, there is no response.	When creating a DVD, you must click [Burn a Disc] again after erasing the disc.
Does not open automatically.	If the setting for auto open is set to [No], change this setting to [Yes]. If it is set to [Yes] but does not open automatically, reselect [Settings] and repeat the setting procedure.

Information You Should Know

Information	Description
Working Space	When creating a DVD, free space must be available on the PC hard disk drive to be used as a working space where data targeted for burning can be generated.
Connection of two or more disc burning drives	When multiple burning drives (including a CD drive) are connected in your environment, the intended disc drive may not be specified as the target burning drive. If more than one burning drive is connected, including built-in drives, check the drive settings before performing a burn process.
Maximum size of a single video file and recording time	The maximum size allowed for a recorded file on Everio is 4GB. Recordable time of this single file is approximately 1 to 5 hours depending on the recording mode.
Copy process and rename feature	Files with identical names cannot exist within the same folder. Therefore, a file with a name that already exists will be renamed before being saved. These files will be appended with a number such as "_1", "_2"...after the original file name.
Sleep mode	When PowerCinema is not operated for a certain amount of time, it may enter sleep mode due to PC settings. In such a case, settings that do not enable power supply to external devices may cause problems when resuming from sleep mode. Make sure you do not disable power supply to external devices.
VRAM and 3D display	Graphic interface can be displayed in 3D if VRAM size is 128MB or above. This feature may not be available or behave properly on some PCs. In such a case, select [Good].
PC and graphic performance	Video or image may not play smoothly in some PC environments. Even if this is the case, there is no effect on the created DVD disc.

Glossary

Glossary	Description
Title, Chapter	A title is the thumbnail displayed at the DVD top menu. DVDs can be played by selecting the title. A chapter is a marker, which indicates sub-divisions of these titles for cueing purposes. PowerCinema does not provide chapter features.
Authoring	The process, which involves creating menu sections and arranging files to conform with standards, to create a DVD.
Title Menu	Index pages in a DVD that may be used for cueing.
DVD Video	The name of the format for commercially available DVDs.
DVD-VR	Recording format useful for recording and adding data used in devices such as video recorders.
HQ (Best)	Records images in high quality. Image quality is maintained, but shortens the total playing time.
SP (Standard)	Records images in standard quality.
LP (Long)	Allows long playing time.
Linear PCM	An uncompressed audio format.
Doby Digital	A high efficient compressed audio format developed by Dolby Laboratories.
SPDIF	Interface standard for connecting digital audio devices such as CD and MD. Passing and receiving of data is handled in digital signals, which avoids any degradation of the original audio.
Doby Surround	A surround audio method developed by Dolby Laboratories.
FAT32	A disk format. A FAT32 disk can store files up to 4GB each.
Dialog	A window displaying messages. You must follow directions shown in a dialog, and close this window, in order to proceed.
Progress Bar	A bar that resembles a bar graph used to indicate the degree of progress.
GB, MB	Abbreviation of "gigabyte" and "megabyte." 1MB is approximately 1 million bytes. 1GB is approximately 1 billion bytes.
VRAM	RAM used to store graphics. In some cases, a section in the main memory is allocated.
Drive Letter	A drive letter is an letter assigned to identify a storage device (drive). A device is assigned with a single letter from A to Z.
Click	Action of pressing a button or an item on the screen using a mouse. The phrase "click" used in the instructions indicates a single push of the mouse's left button.
Thumbnail	A small or scaled down display of the actual image.
Device	Equipment connected to the PC. Here this term refers to storage devices, such as a hard disk or a memory card.
PC	Abbreviation of "personal computer."
Screen Size Button	A square button displayed at the top right of the PC screen. This button is used to switch display between full-screen and widow.
Full-Screen Display	To display a screen or page in full. At PowerCinema start-up, the default is set to full-screen display.
Spiral Icon	An icon displayed in the center of the screen in the shape of a spiral. When this icon is displayed, wait for the process to be completed. This icon may remain unchanged for several minutes.