

# AMOD GPS Photo Tracker AGL3080 Quick User Guide



March, 2008

AMOD Technology Co., Ltd.

1



**LOG GPS DATA -**  
Take AGL3080  
along on your photo  
taking trip

- Turn the AGL3080 ON by pressing the Power ON/OFF button until all three LED's blink simultaneously once
- When the Green LED is blinking, indicating it has started tracking the GPS satellites and logging the GPS data
- A hanging strip is provided to make carrying the AGL3080 more convenient and comfortable
- During normal operation, if you see the Green LED not blinking (i.e., constant ON), adjust the orientation and position of AGL3080 until the Green LED is blinking again – to ensure good reception of GPS signals
- When you are in-doors or inside a tunnel, the Green LED will be constantly on when the GPS signal strength is too low or there is no GPS signal to track – this is normal and you do not need to do anything



**DOWNLOAD –**  
Download both the  
GPS log (from  
AGL3080) and photo  
images (follow DSC  
instructions)

- Download picture photos to your PC  
[Please follow instructions from your  
DSC regarding picture download]
- Plug AGL3080 to your PC's USB port
- Run the accompanying GPS Photo  
Tracker software to import the GPS  
log from AGL3080

[The GPS Photo Tracker Software  
must be installed in your PC first. It is  
very easy to use. For installation and  
usage, please refer to the AGL3080  
GPS Photo Tracker User Manual.]



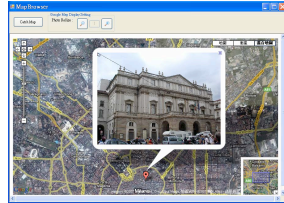
**HAVE FUN –**  
Run the Photo Tracker  
software to tag the  
photos and display  
them on internet map  
(such as Google Map)

- Preview the picture photos
- Locate where the picture was taken by displaying it on Google Map
- Save the GPS tag of your picture photos for future use or do nothing
- GPS logs from AGL3080 also works with many other photo organizing software
- AGL3080 also works with those photo organizing software such as JetPhoto Studio on Apple's MAC operating system



Many extremely  
useful functions

- MARK/TAG – Depress the Mark / Tag button after taking the picture can create a tag for the picture in the GPS log.
- GPS RESET – When the stored GPS satellite information is out of date or out of view, the AGL3080 may take longer time to obtain position fix. When this happens, depress the MARK/TAG button for about 5 sec. to perform the GPS Reset function. This can help the GPS position fix and is very helpful when travel from places to places
- Use it as a USB flash storage device when needed



Various logging mode at your finger tip

- Enter Set Up Mode by holding POWER and MARK key simultaneously for 5 seconds until three LEDs are lit constantly
- Press mark key to set logging mode
- To clear storage area, press the POWER and MARK keys simultaneously for about 10 sec

● Different setting mode as below

	LED Status	Output Format	Minimum Records	Minimum Operation Hours
Mode 1	Memory Full Led ON	GGA/GSA/RMC/VTG->1 sec GSV -> 5 sec	260,000	72 hours
Mode 2	Memory Full Led Flash	Only RMC->1 sec	1,040,000	288 hours
Mode 3	GPS Led ON	GGA/GSA/RMC/VTG->5 sec	260,000	360 hours
Mode 4	GPS Led Flash	Only RMC->5 sec	1,040,000	1440 hours
Mode 5	Battery Low Led ON	GGA/GSA/RMC/VTG->10 sec	260,000	720 hours
Mode 6	Battery Low Led Flash	Only RMC->10 sec	1,040,000	2880 hours

## AGL3080 GPS Photo Tracker Summary of Operations and Functions

Turn ON	Func	Depress the ON/OFF button until all three LED's simultaneously blink once, then the Green (GPS Status) LED will be on, indicating the device starts to search for GPS satellite signal
	Stat	When the device obtains a position fix, the Green (GPS Status) LED begins to blink
	Stat	The Green (GPS Status) LED has two states – position fix (blinking) and no position fix (constant on)
Turn OFF	Func	Depress the ON/OFF button until all three LEDs simultaneously goes on and then off, indicating the device is turned off
Mark / Tag	Func	Depress the Mark (icon) button briefly – the RED (Storage Status) LED will blink once, indicating the last position fix has been tagged
GPS Reset	Func	Depress the Mark (icon) button for about (3 ~ 5 seconds) and release – the GPS will do the position fix by researching GPS satellite [so that the satellite Ephemeris will be updated]
Clean Up Storage	Func	To turn on the device, depress ON/OFF (amber) and MARK (red) buttons simultaneously – the three LED's will blink once and then start to – indicating the disc clean up is underway – the LED's will stop blinking and then only the GPS status LED (green) will be on, indicating the device has been turn ON with storage being cleaned up