



## User Manual For C1664R

**Version: V6.01**

**System: Windows XP/98/2000**

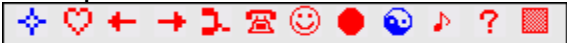
## 1. General Information

### 1.1 Composing parts

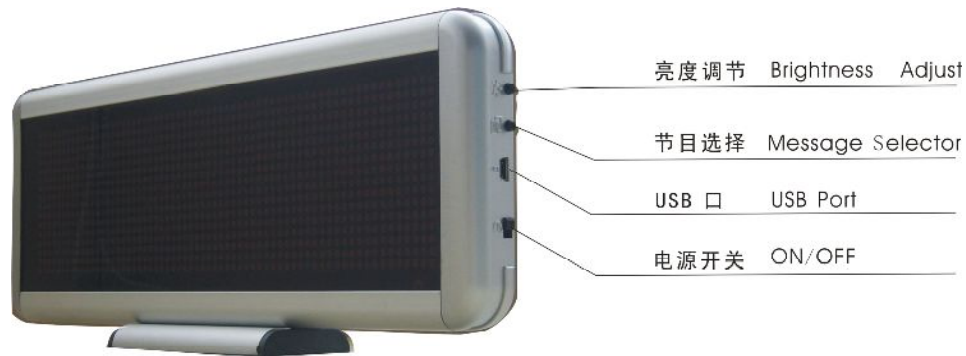
- 1) USB cord with two functions that is upload message from PC and re-charge the battery
- 2) 220V charge adapter (options)
- 3) CD-ROM (multi-language)



### 1.2 The Features:

- 1) Multi Language: English/Western/Korean/Chinese/Traditional Chinese/Japanese/ Russia...
- 2) 6 Text Message with 250 chars, 2 image message with 12X384 pixels, store Max 1500 ASCII chars or 500 eastern chars.
- 3) 11 Special Animation Icons.  

- 4) 5 Special Action: Rotate, Snow, Flash, hold, Twinkle
- 5) 5 Speeds.
- 6) 4 Classess Brightness, 25%, 50%, 75%, 100%, Adjust by Key.
- 7) Large capability Poly-Lion battery. Working time more than 16 Hours.
- 8) Single mini USB interface for charge and communication.

### 1.3 The keys function of LED Digital Board



#### 1) Switch On/Off your badge

Firstly, make sure the battery with energy before usage. Turn on the switch, and the pre-stored message will run automatically. The switch turned off or the battery used out, the badge will turn off automatically.

#### 2) Two buttons

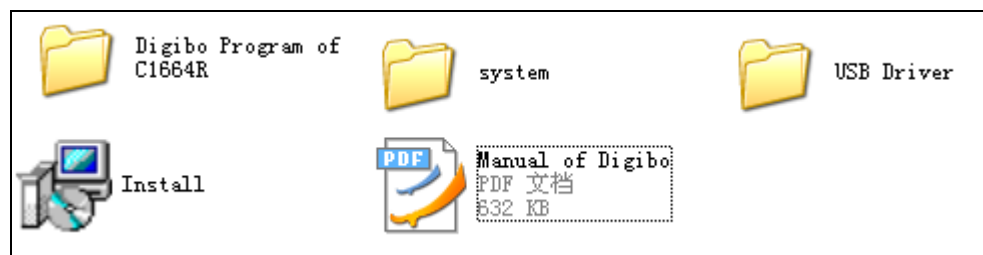
There are two buttons on the LED Digital Board. One is use to choose message, the other is adjust to brightness.

#### 3) USB Port

Upload message from PC and re-charge.

## 2. Guide in installing software

2.1 There is a CD-ROM accompanied by the LED Digital Board. As the following images.



Please double click Install.exe to install. The left side of screen will show the

following image. There are two steps to install LED Digital Board. One is to install USB driver; the other is to install Software of LED Digital Board. Please carry out the install program as follows.



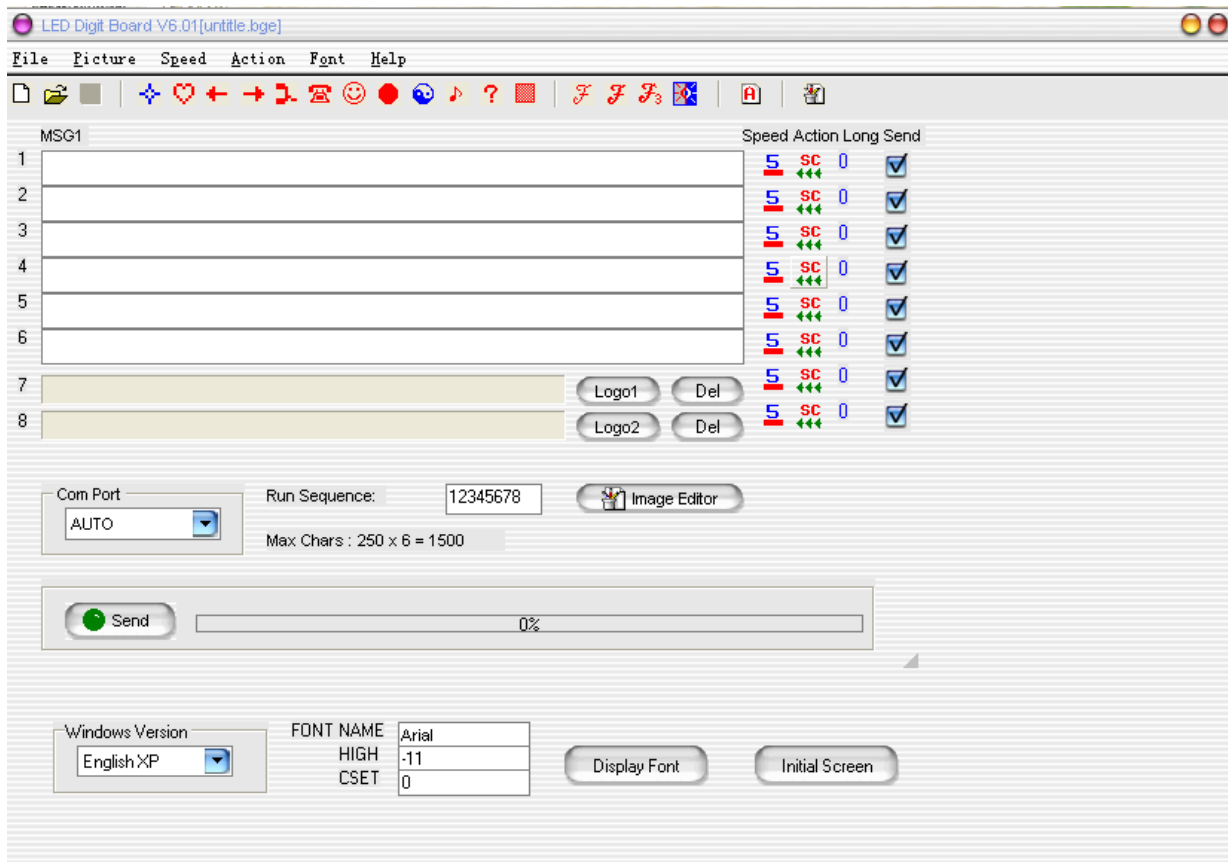
After finishing it, the desktop will appear the following Texts.

- 1) There will be a program of LED Digital Board in the star-up menu, which has LED Digital Board.
- 2) On the desktop, there is a icon of LED Digital Board.



## 2.2 Guide in the software operation

- 1) Input test message like this: input content directly to the current window in which can insert the content of animation. The message property has career, action, font number and whether it is sent and so on.



- 2) Image: There are 11 animations, such as heart form, telephone form and so on. Please refer to the former interface.
- 3) Speed: There is 5 classes which is the fastest as well as common use.
- 4) Action: There are Scroll, Twinkle, Snow and Stop actions.
- 5) Font Number: As far as the text message, it is font number, but Chinese characters only take up two fonts.
- 6) Sending chosen: It decides whether the current message sends or not.

### 2.3 How to input image?

The LED Digital Board can be input 2 LOGO messages. Please press the “Logo” buttons at the end of image message edit boxes.

### 2.4 How to edit a image text?

There is a program of Image Editor in the software package. Click the button of the Image Editor on the interface to launch the program. When you finish an image file, please save it to disk. Then use the “Logo” buttons to load the image you had edited.

### 2.5 About the running sequence:

The message will be run on the order of Running Sequence. It's a good method to redefine the order of message by editing the Running Sequence. You can input new order like "87654321" or "6327" to the Running Sequence to run the message based on your demand.

## 2.6 USB communication:

Insert the USB of LED Digital Board to PC directly, and the software will run. After editing, then press Send button, the message will upload to LED Digital Board.

## **3. About charging**

You can use USB cord to charge the LED Digital Board in your PC as you turn on the switch button. At the same time the screen will show a twinkling icon which shows the capacity of electric. After finishes charging, you should move charger immediately or turn off switch of the LED Digital Board.

About AC/DC USB charging: the LED Digital Board use it to charge.