

SOLAR PATH LIGHT

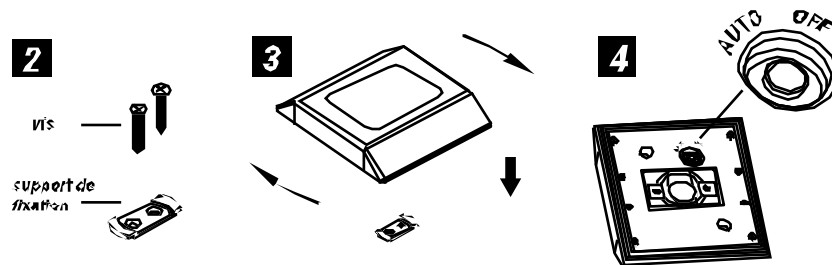
Mod. SL499

Installation Instructions

For best results, locate the solar path light in a position where it can get direct sunlight, free from cover and shade. (As shown in figure 1). Make sure that the solar panel is not going to be affected by any other light source.



- 1) Mount the bracket with the 2 screws provided (as shown in figure 2)
- 2) Align the path light over the bracket and turn clockwise (as shown in figure 3)
- 3) Press the button to the "AUTO" position (As show in Figure 4)

**Replacing the Battery**

For best results the battery should be replaced every 12 months

- 1) Turn the switch to off on the back of the unit and remove the 8 screws.
- 2) Replace the battery with a new 1.2 v Ni-MH AAA rechargeable battery.
- 3) Re-assemble and turn the battery switch to auto.
- 4) Allow the solar path light to receive a full 8 hours of sunlight to allow the rechargeable battery to reach maximum capacity.

Troubleshooting

If the light does not turn on at dusk after 8 hours of charging:

- Check the battery to make sure it is making secure contact with the terminal.
- Be sure the solar fixture is in a relatively sunny location.
- Make sure the light's photocell is not affected by other light.

Caution

- Failure to insert battery in the correct polarity, as indicated in the battery compartment, may shorten the life of the battery or cause it to explode or leak.
- Do not dispose of battery in fire.

Maintenance

Periodically clean light fixture with soft cloth and warm soapy water.

One Year Limited Warranty

This product is warranted to be free from defects in workmanship or materials at the time of purchase for a period of one year, (excluding batteries). Should a defect occur, please contact our customer service line at 1-866-460-4604 for service. Should any evidence of defects in material or workmanship appear within the warranty period after the date of purchase, Classy Caps Mfg. Inc. will either repair or replace the product at

its option. Classy Caps Mfg. Inc. is not responsible for injury, property damage, or other consequential damages or damages to third parties arising directly or indirectly from an actual or alleged defect in material or workmanship of the product.