

# Always there to help you

Register your product and get support at  
[www.philips.com/welcome](http://www.philips.com/welcome)

DTM5096



## User manual

# PHILIPS



# Contents

<b>1</b>	<b>Safety and Notice</b>	<b>2</b>
	Safety	2
	Notice	4
<b>2</b>	<b>Your Docking Entertainment System</b>	<b>5</b>
	Introduction	5
	What's in the box	5
	Overview of the main unit	5
	Overview of the remote control	6
<b>3</b>	<b>Get started</b>	<b>8</b>
	Connect FM antenna	8
	Connect power	8
	Prepare the remote control	9
	Set clock	9
	Turn on	9
<b>4</b>	<b>Play</b>	<b>11</b>
	Play from disc	11
	Play iPod/iPhone/iPad	11
	Play from USB	12
	Play from a Bluetooth device	13
<b>5</b>	<b>Play options</b>	<b>15</b>
	Pause/resume play	15
	Stop play	15
	Skip to a track	15
	Search within a track	15
	Repeat and shuffle play	15
	Program tracks	15
	Display ID3 information	15
<b>6</b>	<b>Listen to the radio</b>	<b>16</b>
	Tune to a radio station	16
	Program radio stations	16
	Select a preset radio station	16
	Display play information	16
<b>7</b>	<b>Adjust sound</b>	<b>17</b>
	Adjust volume	17
	Select a preset sound effect	17
	Enhance bass	17
	Immerse music over a wider spot	17
	Mute sound	17
<b>8</b>	<b>Other features</b>	<b>18</b>
	Set the sleep timer	18
	Set the alarm timer	18
	Listen to an external device	18
<b>9</b>	<b>Product information</b>	<b>19</b>
	Specifications	19
	USB playability information	19
	Supported MP3 disc formats	20
<b>10</b>	<b>Troubleshooting</b>	<b>21</b>

# 1 Safety and Notice

Read and understand all instructions before you use this product. If damage is caused by failure to follow the instructions, the warranty does not apply.

---

## Safety

---

### Safety



#### Warning

- Never remove the casing of this apparatus.
  - Never lubricate any part of this apparatus.
  - Never look into the laser beam inside this apparatus.
  - Never place this apparatus on other electrical equipment.
  - Keep this apparatus away from direct sunlight, naked flames or heat.
  - Ensure that you always have easy access to the power cord, plug or adaptor to disconnect the apparatus from the power.
- 
- The device shall not be exposed to dripping or splashing.
  - Do not place any source of danger on the device (e.g. liquid filled objects, lit candles).
  - Where the MAINS plug or an appliance coupler is used as the disconnect device, the disconnect device shall remain readily operable.
  - Make sure that there is enough free space around the product for ventilation.
  - Only use attachments/accessories specified by the manufacturer.

---

### Care for your product

- Remove the discs from the disc compartment if you are not using the product for an extended period of time.
- Only use microfiber cloth to clean the product.

---

### Care of the environment



Your product is designed and manufactured with high quality materials and components, which can be recycled and reused.



When this crossed-out wheeled bin symbol is attached to a product it means that the product is covered by the European Directive 2002/96/EC.

Please inform yourself about the local separate collection system for electrical and electronic products.

Please act according to your local rules and do not dispose of your old products with your normal household waste. Correct disposal of your old product helps to prevent potential negative consequences for the environment and human health.



Your product contains batteries covered by the European Directive 2006/66/EC, which cannot be disposed with normal household waste. Please inform yourself about the local rules on separate collection of batteries because correct disposal helps to prevent negative consequences for the environmental and human health.

## Compliance

# CE 0890

This product complies with the requirement of the 1999/5/EC directive.

A copy of the EC declaration of Conformity is available in the Portable Document Format (PDF) version of the user manual at [www.philips.com/support](http://www.philips.com/support).

**This apparatus includes this label:**



### Note

- The type plate is located on the back of the apparatus.

## Hearing safety



### Warning

- To prevent possible hearing damage, do not listen at high volume levels for long periods.

### Listen at a moderate volume.

- Using headphones at a high volume can impair your hearing. This product can produce sounds in decibel ranges that may cause hearing loss for a normal person, even for exposure less than a minute. The higher decibel ranges are offered for those that may have already experienced some hearing loss.

- Sound can be deceiving. Over time your hearing 'comfort level' adapts to higher volumes of sound. So after prolonged listening, what sounds 'normal' can actually be loud and harmful to your hearing. To guard against this, set your volume to a safe level before your hearing adapts and leave it there.

### To establish a safe volume level:

- Set your volume control at a low setting.
- Slowly increase the sound until you can hear it comfortably and clearly, without distortion.

### Listen for reasonable periods of time:

- Prolonged exposure to sound, even at normally 'safe' levels, can also cause hearing loss.
- Be sure to use your equipment reasonably and take appropriate breaks.

### Be sure to observe the following guidelines when using your headphones.

- Listen at reasonable volumes for reasonable periods of time.
- Be careful not to adjust the volume as your hearing adapts.
- Do not turn up the volume so high that you can't hear what's around you.
- You should use caution or temporarily discontinue use in potentially hazardous situations. Do not use headphones while operating a motorized vehicle, cycling, skateboarding, etc.; it may create a traffic hazard and is illegal in many areas.

---

## Notice

Any changes or modifications made to this device that are not expressly approved by WOOX Innovations may void the user's authority to operate the equipment.

### Environmental information

All unnecessary packaging has been omitted. We have tried to make the packaging easy to separate into three materials: cardboard (box), polystyrene foam (buffer) and polyethylene (bags, protective foam sheet.) Your system consists of materials which can be recycled and reused if disassembled by a specialized company. Please observe the local regulations regarding the disposal of packaging materials, exhausted batteries and old equipment.



**Be responsible  
Respect copyrights**

The making of unauthorized copies of copy-protected material, including computer programs, files, broadcasts and sound recordings, may be an infringement of copyrights and constitute a criminal offence. This equipment should not be used for such purposes.



Windows Media and the Windows logo are trademarks, or registered trademarks of Microsoft Corporation in the United States and/or other countries.



"Made for iPod," "Made for iPhone," and "Made for iPad" mean that an electronic accessory has been designed to connect specifically to iPod, iPhone, or iPad, respectively, and has been certified by the developer to meet

Apple performance standards. Apple is not responsible for the operation of this device or its compliance with safety and regulatory standards. Please note that the use of this accessory with iPod, iPhone, or iPad may affect wireless performance.

iPod and iPhone are trademarks of Apple Inc., registered in the U.S. and other countries. iPad is a trademark of Apple Inc.

### Bluetooth

The Bluetooth® word mark and logos are registered trademarks owned by Bluetooth SIG, Inc. and any use of such marks by WOOX Innovations is under license.

## 2 Your Docking Entertainment System

Congratulations on your purchase, and welcome to Philips! To fully benefit from the support that Philips offers, register your product at [www.philips.com/welcome](http://www.philips.com/welcome).

### Introduction

With this unit, you can:

- enjoy audio from discs, USB devices, iPod/iPhone/iPad, Bluetooth devices, and other external devices
- listen to radio stations

You can enrich sound output with these sound effects:

- Dynamic Bass Boost (DBB)
- Digital Sound Control (DSC)
- Living Sound

The unit supports the following media formats:

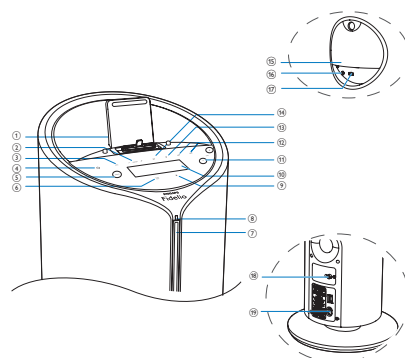


### What's in the box

Check and identify the contents of your package:

- Main unit
- Remote control with two AAA batteries
- Power cords
- MP3 link cable
- FM antenna
- Short User manual
- Safety & Notice sheet

### Overview of the main unit



- ① **DOCK**
  - Dock for iPod/iPhone/iPad.
- ② **PRESET +/-**
  - In tuner source, tap to select a preset radio station.
  - In Disc/USB source, tap to skip to the previous/next album.
- ③ **SRC**
  - Select a source: DISC, FMTUNER, DOCK, USB, AUX or BT.
- ④ **⏻**
  - Turn the unit on.
  - Switch to standby mode or Eco power standby mode.

## 5 PROG

- In Disc/USB source, tap and hold to program tracks.
- In tuner source, tap and hold to program radio stations.
- In standby mode, tap and hold to set the clock.

## 6 SUBVOL

- Adjust subwoofer volume.

## 7 Disc compartment

## 8 LED indicator

## 9 ▲

- Eject the disc.

## 10 Display panel

- Show current status.

## 11 VOL +/-

- Adjust volume.

## 12 ◀◀ / ▶▶

- In Disc/USB/Dock source, tap to skip to the previous/next track.
- In Disc/USB/Dock source, tap and hold to search within a track.
- In tuner source, tap to tune to a radio station.
- Tap to set clock and timer.

## 13 ■

- Stop play or erase a program.

## 14 ▶▶

- Start or pause play.

## 15 PULL

- Pull to open the protective panel.

## 16 AUX

- Connect an external audio device.

## 17 ◀◀

- USB socket.

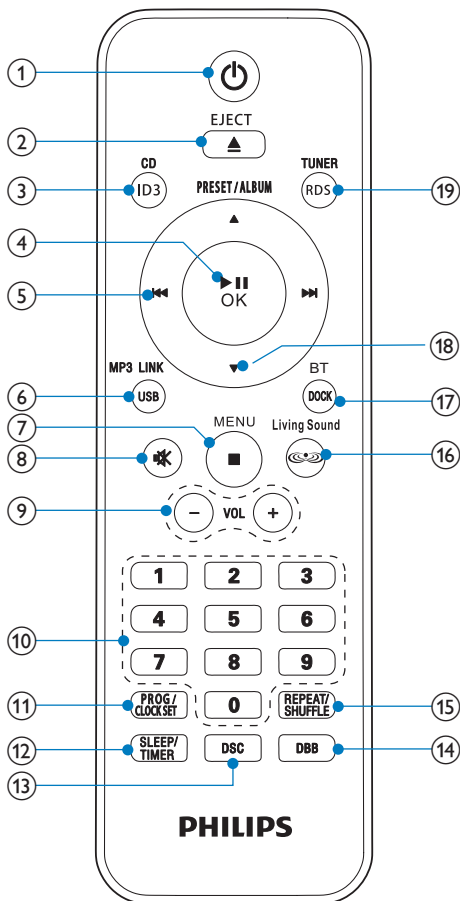
## 18 FMAERIAL

- Connect FM antenna.

## 19 AC MAIN~

- Power supply socket.

## Overview of the remote control



## 1 ❶

- Turn the unit on.
- Switch to standby mode or Eco power standby mode.

## 2 ❷

- Eject the disc.

## 3 ❸

- Select CD source.
- Display ID3 information.

- ④ **▶||/OK**
  - Start or pause play.
  - Confirm a selection.
- ⑤ **◀◀ / ▶▶**
  - In Disc/USB/Dock source, press to skip to the previous/next track.
  - In Disc/USB/Dock source, press to search within a track.
  - In tuner source, press to tune to a radio station.
  - Set clock and timer.
- ⑥ **MP3 LINK/USB**
  - Select MP3 LINK or USB source.
- ⑦ **MENU/■**
  - Access the iPod/iPhone/iPad menu.
  - Stop play or erase a program.
- ⑧ **🔇**
  - Mute or restore sound.
- ⑨ **VOL +/-**
  - Adjust volume.
- ⑩ **Numeric keypad**
  - Select a track.
  - Select a preset radio station.
- ⑪ **PROG/CLOCK SET**
  - In Disc/USB source, press and hold to program tracks.
  - In tuner source, press and hold to program radio stations.
  - In standby mode, press and hold to set the clock.
- ⑫ **SLEEP/TIMER**
  - Set the sleep timer.
  - Set the alarm timer.
- ⑬ **DSC**
  - Select a preset sound setting.
- ⑭ **DBB**
  - Turn the Dynamic Bass Boost (DBB) on/off.
- ⑮ **REPEAT/SHUFFLE**
  - Select repeat/shuffle play mode.
- ⑯ **Living Sound**
  - Turn the Living Sound effect on/off.
- ⑰ **DOCK/BT**
  - Select iPod/iPhone/iPad source.
  - Select Bluetooth source.
- ⑱ **PRESET/ALBUM ▲ / ▼**
  - Select a preset radio station.
  - Skip to previous/next album.
  - Navigate through the iPod/iPhone/iPad menu.
- ⑲ **TUNER/RDS**
  - Select FM source.
  - Display Radio Data System (RDS) information.

# 3 Get started

## ! Caution

- Use of controls, or adjustments or performance of procedures other than herein may result in hazardous radiation exposure or other unsafe operation.

Always follow the instructions in this chapter in sequence.

If you contact Philips, you will be asked for the model and serial number of this device. The model number and serial number are on the back of the device. Write the numbers here:

Model No. \_\_\_\_\_

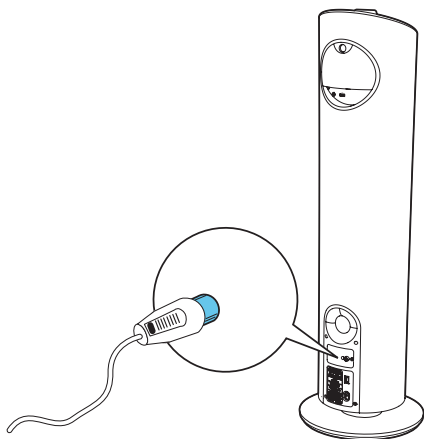
Serial No. \_\_\_\_\_

## Connect FM antenna

### \* Tip

- For optimal reception, fully extend and adjust the position of the antenna.

Connect the supplied FM antenna to the **FM AERIAL** jack on the back of the main unit.



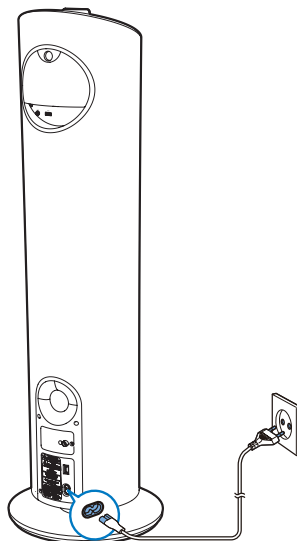
## Connect power

### ! Caution

- Risk of product damage! Ensure that the power supply voltage corresponds to the voltage printed on the back or the underside of the unit.
- Risk of electric shock! When you unplug the AC power cord, always pull the plug from the socket. Never pull the cord.
- Before connecting the AC power cord, ensure you have completed all other connections.

Connect the power cord to:

- the **AC~MAINS** jack on the back of the main unit.
- the wall outlet.



## Prepare the remote control

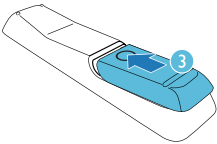
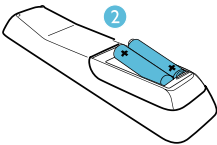
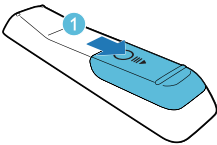


### Caution

- Risk of explosion! Keep batteries away from heat, sunshine, or fire. Never discard batteries in fire.

### To insert the remote control battery:

- 1 Open the battery compartment.
- 2 Insert 2 AAA batteries with correct polarity (+/-) as indicated.
- 3 Close the battery compartment.



### Note

- If you are not going to use the remote control for a long time, remove the batteries.
- Do not use old and new or different types of batteries in combination.
- Batteries contain chemical substances, so they should be disposed of properly.

## Set clock

- 1 In standby mode, press and hold **PROG/CLOCK SET** for more than two seconds to activate the clock setting mode.  
↳ The 12 hour or 24 hour format is displayed.
- 2 Press **◀◀/▶▶** to select 12 hour or 24 hour format, and then press **PROG/CLOCK SET**.  
↳ The hour digits are displayed and begin to blink.
- 3 Press **◀◀/▶▶** to set the hour, and then press **PROG/CLOCK SET**.  
↳ The minute digits are displayed and begin to blink.
- 4 Press **◀◀/▶▶** to set the minute.
- 5 Press **PROG/CLOCK SET** to confirm.

## Turn on

Press **⏻**.

- ↳ The unit switches to the last selected source.

## Switch to standby

Press **⏻** again to switch the unit to standby mode.

- ↳ The backlight on the display panel is reduced.
- ↳ The clock (if set) appears on the display panel.

### To switch to Eco power standby mode:

Press and hold **⏻** for more than two seconds.

- ↳ The backlight on the display panel turns off.

### To switch between normal standby mode and Eco power standby mode:

Press and hold **⏻** for more than two seconds.



## Note

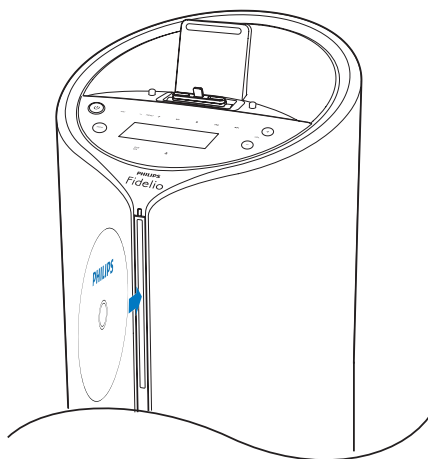
- If no button is pressed over 15 minutes in standby mode, this device goes to Eco power standby mode automatically.

## 4 Play

---

### Play from disc

- 1 Press **CD/ID3** on the remote control or tap **SRC** repeatedly on the main unit to select CD source.
- 2 Insert a disc into the disc compartment with the printed side facing right.
  - ↳ The file starts playing automatically. If not, press **▶II**.
  - Press **EJECT ▲** to take the disc out of the disc tray.



---

### Compatible iPod/iPhone/iPad

The docking system supports the following iPod/iPhone/iPad models.

iPod models:

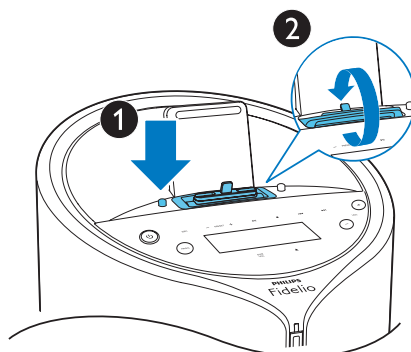
- iPod touch 5th generation / iPod nano
- iPhone models:
  - iPhone 5S/iPhone 5C/iPhone 5 / iPhone4S / iPhone 3GS
- iPad models:
  - All iPad

---

### Switch the dock

You can switch the dock between 30-pin connector and lightning connector.

- 1 Press the button on the left side of the docking system.
- 2 Rotate the center to switch the dock.



---

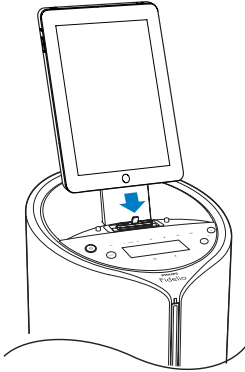
### Play iPod/iPhone/iPad

You can enjoy audio from iPod/iPhone/iPad through this docking system.

---

## Load the iPod/iPhone/iPad

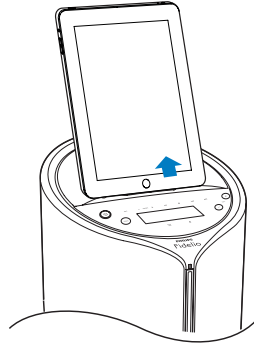
Insert the iPod/iPhone/iPad in the dock.



---

## Remove the iPod/iPhone/iPad

Pull the iPod/iPhone/iPad out of the dock.



---

## Listen to the iPod/iPhone/iPad

### Note

- Make sure that your iPod/iPhone/iPad has been loaded securely.

- 1 Press **DOCK** on the remote control or tap **SRC** repeatedly on the main unit to select **DOCK** source.
- 2 Play audio on your iPod/iPhone/iPad.
  - ↳ The audio in connected iPod/iPhone/iPad streams from this docking system automatically. If not, press **▶||**.
  - To navigate the menu: press **MENU/■** and press **▲/▼/◀◀/▶▶** to select, and then press **OK** to confirm.

---

## Play from USB

### Note

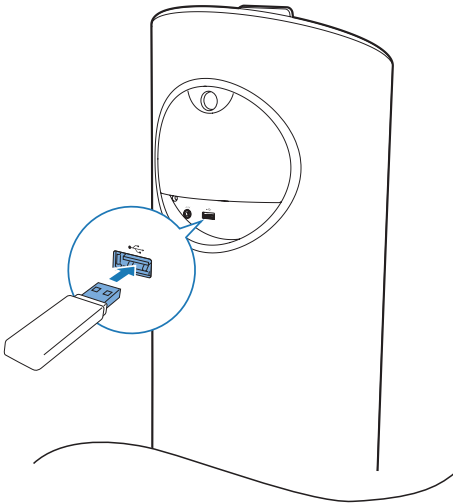
- Ensure that the USB device contains playable audio content.

- 1 Press **MP3 LINK/USB** repeatedly on the remote control or tap **SRC** repeatedly on the main unit to select the **USB** source.
- 2 Insert the USB device into the  (USB) socket on the back of the unit.
  - ↳ The file starts playing automatically. If not, press **▶||**.

---

## Charge the iPod/iPhone/iPad

When the unit is connected to power, the docked iPod/iPhone/iPad begins to charge automatically.



## Play from a Bluetooth device

You can listen to a Bluetooth device through the unit.

### Note

- Before you connect a Bluetooth device to the unit, familiarize yourself with the Bluetooth capabilities of the device.
- Keep the unit away from other electronic devices that may cause interference.
- The effective operation range between the unit and the paired device is approximately 10 meters (30 feet).
- Any obstacle between the unit and the device can reduce the operational range.

- 1 Tap **SRC** repeatedly on the main unit or press **DOCK/BT** on the remote control to select Bluetooth source.
- 2 Activate the Bluetooth function on your Bluetooth device (see the device user manual).
- 3 On your device, search for the devices that can be paired.

➡ "PHILIPS DTM5096" is displayed in your device list.

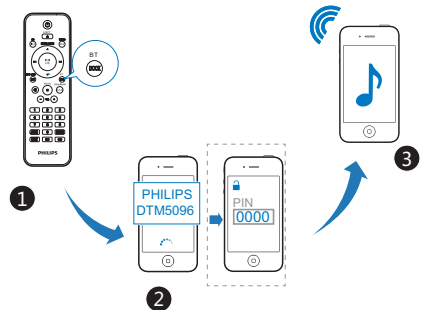
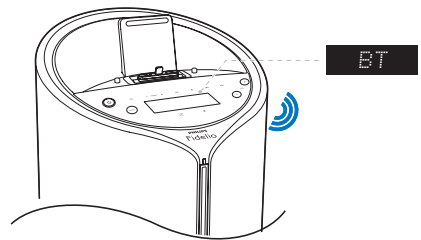
- 4 Select "PHILIPS DTM5096" on your device for pairing.

➡ The Bluetooth indicator lights up in blue.

➡ The unit beeps twice.

- For some devices, you may need to input "0000" as the pairing password.

- 5 Start music play on your Bluetooth device.





### Tip

- If the unit switches from Bluetooth source to other sources, the connected Bluetooth device disconnects automatically.

---

## Erase Bluetooth connect information

The unit can remember up to 8 Bluetooth devices which were connected with the unit previously. You can erase the Bluetooth connection information.

- 1 Press  to turn on the unit.
- 2 Tap and hold  on the main unit for more than 8 seconds.
  - ↳ The unit beeps once after erasing completes.
  - ↳ The unit restarts automatically.

## 5 Play options

---

### Pause/resume play

During play, press ►|| to pause/resume play.

---

### Stop play

During play, press ■ to stop play.

---

### Skip to a track

For CD:

- 1 Press ◀◀ / ▶▶ to select another track.
  - To select a track directly, press a key on the numerical keypad.

For MP3 disc and USB:

- 1 Press ▲ / ▼ to select an album or folder.
- 2 Press ◀◀ / ▶▶ to select a track or file.




---

### Search within a track

- 1 During play, press and hold ◀◀ / ▶▶ to search within a track.
- 2 Release to resume normal play.

---

### Repeat and shuffle play

- 1 During play, press **REPEAT/SHUFFLE** repeatedly to select:
  -  (repeat one): The current track is played repeatedly.
  -  (repeat all): All tracks are played repeatedly.
  -  (shuffle): All tracks are played in a random sequence.

- 2 To return to normal play, press **REPEAT/SHUFFLE** repeatedly until repeat/shuffle mode is no longer displayed.



#### Note

- The repeat and shuffle play cannot be activated at the same time.
- Shuffle play cannot be selected when you play programmed tracks.

---

### Program tracks

You can program a maximum of 20 tracks.

- 1 In CD/USB mode, at the stop position, press **PROG/CLOCK SET** to activate the program mode.
  - ↳ **[PROG]** (program) blinks on the display.
- 2 For MP3/WMA tracks, press ▲ / ▼ to select an album.
- 3 Press ◀◀ / ▶▶ to select a track number, and then press **PROG/CLOCK SET** to confirm.
- 4 Repeat steps 2 to 3 to program more tracks.
- 5 Press ►|| to play the programmed tracks.
  - ↳ During play, **[PROG]** (program) is displayed.
    - To erase the program, in the stop position, press ■.

---

### Display ID3 information

In CD mode, during play, press **CD/ID3** to display the following information:

- Track number
- Play time
- Title name
- Artist name
- Album name

# 6 Listen to the radio

---

## Tune to a radio station



Tip

- For optimal FM reception, fully extend and adjust the position of the FM antenna.

- 1 Press **TUNER/RDS** on the remote control or tap **SRC** repeatedly on the main unit to select the tuner source.
- 2 Press and hold **◀◀ / ▶▶** for more than two seconds.
  - ↳ **[SEARCH]** (search) is displayed.
  - ↳ The radio tunes to a station with strong reception automatically.
- 3 Repeat step 2 to tune to more stations.
  - To tune to a weak station, press **◀◀ / ▶▶** repeatedly until you find optimal reception.

---

## Program radio stations



Tip

- You can program a maximum of 20 preset radio stations.

---

## Program radio stations automatically

In tuner mode, press and hold **PROG/CLOCK SET** for more than two seconds to activate automatic program mode.

- ↳ **[AUTO SRCH]**(auto search) is displayed.

- ↳ All available stations are programmed in the order of waveband reception strength.
- ↳ The first programmed radio station is broadcast automatically.

---

## Program radio stations manually

- 1 Tune to a radio station.
- 2 Press **PROG/CLOCK SET** to activate program mode.
  - ↳ **[PROG]** (program) blinks on the display.
- 3 Press **▲ / ▼** to allocate a number (1 to 20) to this radio station, and then press **PROG/CLOCK SET** to confirm.
  - ↳ The preset number and the frequency of the preset station are displayed.
- 4 Repeat the above steps to program other stations.



Note

- To overwrite a programmed station, store another station in its place.

---

## Select a preset radio station

In tuner mode, press **▲ / ▼** to select a preset number.

- You can also press the numeric key to select a preset number directly.

---

## Display play information

Radio Data System (RDS) is a service that allows FM stations to show additional information.

In tuner mode, press **TUNER/RDS** repeatedly to show RDS information.

# 7 Adjust sound

---

## Mute sound

During play, press **M** to mute or restore sound.

---

## Adjust volume

During play, press **VOL +/-** to increase/decrease the volume.

---

## Adjust subwoofer volume

During play, tap **SUBVOL** on the main unit to increase/decrease the subwoofer volume.

---

## Select a preset sound effect

During play, press **DSC** repeatedly to select:

- **[JAZZ]** (jazz)
- **[POP]** (pop)
- **[FLAT]** (flat)
- **[ROCK]** (rock)
- **[CLASSIC]** (classic)

---

## Enhance bass


During play, press **DBB** to turn on or off dynamic bass enhancement.

- ↳ If DBB is activated, DBB feature is enabled.

---

## Immerse music over a wider spot

During play, press **Living Sound** to turn on or off the living sound effect.

- ↳ If Living Sound is activated,  is displayed.

## 8 Other features

---

### Set the sleep timer

This docking system can switch to standby automatically after a set period of time.

- 1 When the unit is turned on, press **SLEEP/TIMER** repeatedly to select a set period of time (in minutes).  
↳ When sleep timer is activated, **zz** is displayed.

#### To deactivate sleep timer

- 1 Press **SLEEP/TIMER** repeatedly until **[SLEEP OFF]** (sleep off) is displayed.  
↳ When sleep timer is deactivated, **zz** disappears.

---

### Set the alarm timer

This docking system can be used as an alarm clock. You can select CD, FMTUNER, iPod/iPhone/iPad, or USB as alarm source.

 Note

- Ensure that you have set the clock correctly.

- 1 In standby mode, press and hold **SLEEP/TIMER** until **[SET TIMER]** (set timer) scrolls on the display.
- 2 Press **CD, USB, DOCK, or TUNER** to select a source.
- 3 Press **SLEEP/TIMER** to confirm.  
↳ The hour digits are displayed and begin to blink.
- 4 Press **◀▶** to set the hour, and then press **SLEEP/TIMER** again.  
↳ The minute digits are displayed and begin to blink.

- 5 Press **◀▶** to set the minute.
- 6 Press **SLEEP/TIMER** to confirm.  
↳ The alarm timer is set and activated.

 Note

- To exit the alarm timer setting without storing, press **MENU/■**

---

### Activate and deactivate the alarm timer

In standby mode, press **SLEEP/TIMER** repeatedly to activate or deactivate the alarm timer.

- ↳ If the alarm timer is activated, **⏰** is displayed
- ↳ If the alarm timer is deactivated, **⏰** disappears.

 Note

- If CD/USB/DOCK source is selected, but no disc is placed or no USB/iPod/iPhone/iPad is connected, the FMTUNER is selected automatically.

---

### Listen to an external device

You can also listen to an external audio device through this docking system.

- 1 Press **MP3 LINK** to select audio in source.
- 2 Connect the supplied MP3 link cable to:
  - the **MP3 LINK** jack on the back of the unit
  - the headphone jack on the device
- 3 Start to play the device. (See the device user manual).

# 9 Product information

Note

- Product information is subject to change without prior notice.

## Specifications

### Amplifier

Rated Output Power	200 W
Frequency Response	100 Hz - 16 kHz, ±3 dB
Signal to Noise Ratio	>70 dB
MP3 LINK Input	<600 mV RMS

### Disc

Laser Type	Semiconductor
Disc Diameter	12 cm
Support Disc	CD-DA, CD-R, CD-RW, MP3-CD, WMA-CD
Audio DAC	24 Bits / 44.1 kHz
Total Harmonic Distortion	<1%
Frequency Response	60 Hz -16 kHz (44.1 kHz)
S/N Ratio	>65 dBA

Tuner	
Tuning Range	FM: 87.5 - 108 MHz
Tuning grid	50 KHz
Sensitivity	<22 dBf
- Mono, 26dB S/N	<51 dBf
Ratio	
- Stereo, 46dB S/N	
Ratio	
Search Selectivity	<30 dBf
Total Harmonic	<3%
Distortion	
Signal to Noise Ratio	>70 dBA

### Speakers

Speaker	6 ohm + 3 x 6 ohm
Impedance	
Speaker Driver	5.25" woofer + 3 x 2.75" full range
Sensitivity	>82 dB/m/W

### General information

AC power	220 - 240 V, 50/60 Hz
Standby Power	< 1 W
Consumption	
USB Direct	Version 2.0/1.1
Load of USB	≤500 mA
Dimensions	
- Main Unit	
(W x H x D)	350 x 978 x 350 mm
Weight	
- With Packing	15 kg
- Main Unit	11.5 kg

---

## USB playability information

### Compatible USB devices:

- USB flash memory (USB 2.0 or USB1.1)
- USB flash players (USB 2.0 or USB1.1)
- memory cards (requires an additional card reader to work with this unit)

### Supported formats:

- USB or memory file format FAT12, FAT16, FAT32 (sector size: 512 bytes)
- MP3 bit rate (data rate): 32-320 Kbps and variable bit rate
- WMA v9 or earlier
- Directory nesting up to a maximum of 8 levels
- Number of albums/ folders: maximum 99
- Number of tracks/titles: maximum 999
- ID3 tag v2.0 or later
- File name in Unicode UTF8 (maximum length: 128 bytes)

### Unsupported formats:

- Empty albums: an empty album is an album that does not contain MP3/ WMA files, and will not be shown in the display.
- Unsupported file formats are skipped. For example, Word documents (.doc) or MP3 files with extension .dlf are ignored and not played.
- AAC, WAV, PCM audio files
- DRM protected WMA files (.wav, .m4a, .m4p, .mp4, .aac)
- WMA files in Lossless format

---

## Supported MP3 disc formats

- ISO9660, Joliet
- Maximum title number: 512 (depending on file name length)
- Maximum album number: 255
- Supported sampling frequencies: 32 kHz, 44.1kHz, 48 kHz
- Supported Bit-rates: 32~256 (kbps), variable bit rates

# 10 Troubleshooting



## Warning

- Never remove the casing of this apparatus.

To keep the warranty valid, never try to repair the system yourself.

If you encounter problems when using this unit, check the following points before requesting service. If the problem remains unsolved, go to the Philips web site ([www.philips.com/support](http://www.philips.com/support)). When you contact Philips, ensure that the unit is nearby and the model number and serial number are available.

### No power

- Ensure that the AC power cord of the unit is connected properly.
- Ensure that there is power at the AC outlet.
- As a power-saving feature, the system switches off automatically 15 minutes after track play reaches the end and no control is operated.

### No sound or poor sound

- Adjust the volume.
- Disconnect the headphones.
- Check that the speakers are connected correctly.
- Check if the stripped speaker wires are clamped.

### No response from the unit

- Disconnect and reconnect the AC power plug, then turn on the unit again.
- As a power-saving feature, the system switches off automatically 15 minutes after track play reaches the end and no control is operated.

### Remote control does not work

- Before you press any function button, first select the correct source with the remote control instead of the main unit.

- Reduce the distance between the remote control and the unit.
- Insert the batteries with its polarities (+/- signs) aligned as indicated.
- Replace the batteries.
- Aim the remote control directly at the sensor on the front of the unit.

### No disc detected

- Insert a disc.
- Check if the disc is inserted upside down.
- Wait until the moisture condensation at the lens has cleared.
- Replace or clean the disc.
- Use a finalized CD or correct format disc.

### Cannot display some files in USB device

- The number of folders or files in the USB device has exceeded a certain limit. This phenomenon is not a malfunction.
- The formats of these files are not supported.

### USB device not supported

- The USB device is incompatible with the unit. Try another one.

### Poor radio reception

- Increase the distance between the unit and your TV or VCR.
- Fully extend the FM antenna.
- Connect an outdoor FM antenna instead.

### Timer does not work

- Set the clock correctly.
- Switch on the timer.

### Clock/timer setting erased

- Power has been interrupted or the power cord has been disconnected.
- Reset the clock/timer.

### Music playback unavailable after successful connection

- The Bluetooth-enabled device is incompatible with the unit.

### Bluetooth-enabled device connection error

- The device does not support the profiles required for the unit.

- The unit already connected with another Bluetooth-enabled device. Disconnect that device or all other connected devices and then try again.

#### **The paired mobile phone connects and disconnects constantly**

- The Bluetooth reception is poor. Move the mobile phone closer to the unit or remove any obstacle between the mobile phone and the unit.
- Some mobile phones may connect and disconnect constantly when you make or end calls. This does not indicate any malfunction of the unit.
- For some mobile phones, the Bluetooth connection may be deactivated automatically as a power-saving feature. This does not indicate any malfunction of the unit.



Specifications are subject to change without notice

2013 © WOOX Innovations Limited. All rights reserved.

Philips and the Philips' Shield Emblem are registered trademarks of Koninklijke Philips N.V. and are used by WOOX Innovations Limited under license from Koninklijke Philips N.V.

DTM5096\_12\_UM\_V2.0

