

Instructions

1. Insert an A10 battery into the earpiece tray and close the tray.
2. Put the earpiece in your ear. Analogue earpieces will produce a low hissing sound, the digital earpiece will produce a single beep.
3. Connect the inductor to your phone via its 3.5mm headphone socket or to your radio via its headset output.
4. Place the inductor within range of the earpiece (recommended distance 40cm or less).
5. Follow steps below to begin communication depending on which device you plan to use:

MOBILE PHONE/MP3 PLAYER: Simply begin a mobile phone conversation or press play on your MP3 Player. You should hear what the other person is saying, or what your MP3 Player is playing, in your earpiece. If you have a built in microphone you can also talk back.

RADIO: Ask a partner to communicate with you using a 2 way radio. You should hear the voice inside your earpiece. If you have chosen an inductor with built in microphone you can reply by using the inductor attached PTT (Push To Talk) button, or use the PTT button on your radio.

Earpiece Battery Guide

Each earpiece requires a single A10 battery. The battery should last approximately 80 hours + dependant on usage. To replace the battery simply pop the battery into the tray usually at the top of the earpiece, with the '+' end facing outwards (nearest the outer shell of the earpiece). Depending which earpiece you have purchased, either pull the tray from the earpiece at the top or unscrew it.

Once the battery is inserted and the earpiece placed in the ear it is ready to receive voice.

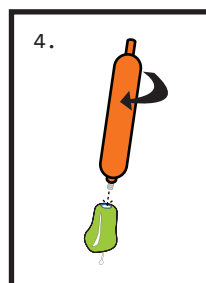
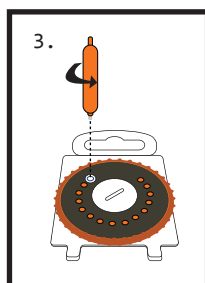
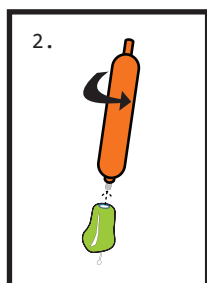
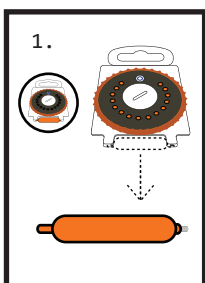
You should hear a beeping noise when the battery is running low as a reminder to change the battery

IMPORTANT: Ensure that you remove the battery from the earpiece when not in use (or pull out the tray). Leaving the tray inserted will run down the battery.

Wax Filter Removal

To ensure earpiece longevity the ear wax filter should be checked and changed on a regular basis. If the filter becomes blocked then replace it by following the instructions below.

1. Remove the tool from the wax filter pack
2. Use the tool to unscrew the filter from the earpiece
3. Use the tool to grab a new filter from the filter pack and insert into earpiece
4. Use the tool to insert the new filter into the earpiece



Contact

Email: info@myspyearpiece.com

Phone: 020 7666 3269

Address: Unit 31, 209 City Road, Cardiff, CF24 3JD

