



Welch[®]

Rietschle Thomas

OWNER'S MANUAL FOR WOB•L[®] PISTON PRESSURE/VACUUM PUMPS MODELS 2522, 2534 AND 2545

Contents: Safety Information
Installation
Operation
Maintenance
Trouble-Shooting Guide
Specifications
Warranty
Parts List and Exploded View



CE

Warning! Not recommended for pumping acid, base or organic vapors or gases.

Warning! Be sure to properly identify intake and discharge before using pump.

SEE Section II-5

**Welch Rietschle Thomas
7301 North Central Avenue
Skokie, IL 60077
Phone: (847) 676-8800
Fax: (847) 677-8606**

Welch Vacuum Technology

Read and understand the following information and instructions included with your Welch Dry Dual Function Pressure & Vacuum Pumps before using. This information is for your safety and to prevent damage to the pumps.

I. SAFETY INFORMATION

I-1. CAUTION TO PREVENT INJURY...

- I-1a. Never operate this product if it has a damaged cord or plug. If it is not working properly has been dropped damaged or has fallen into water, please return the product to a Welch service center for examination and repair.
- I-1b. Keep the cord away from heated surfaces.
- I-1c. Never block any air openings or place it on a soft surface where the openings may be blocked. The air openings are for ventilation of the motor inside the housing. Keep all air openings free of lint, dirt, and other foreign objects.
- I-1d. Never drop or insert fingers or any other object into any openings.
- I-1e. Do not operate this product where oxygen is being administered.
- I-1f. This pump is thermally protected and can automatically restart when the protector resets. Always disconnect power source before servicing.
- I-1g. Wear safety glasses or goggles when operating this product.
- I-1h. Use only in well ventilated areas.
- I-1i. Do not use any tools or attachments without first determining maximum air pressure for that tool or attachment.
- I-1j. Never point any air nozzle or air sprayer toward another person or any part of the body.
- I-1k. All electrical products generate heat. To avoid serious burns never touch unit during or immediately after operation.
- I-1l. Be sure to properly identify intake and discharge before using pump. See Section II-5.
- I-2. **CAUTION: TO REDUCE RISK OF ELECTRICAL SHOCK...**
- I-2a. Do not disassemble. Disassembly or attempted repairs if accomplished incorrectly can create electrical shock hazard. Refer servicing to qualified service agencies only.
- I-2b. Unit is supplied with a three pronged plug Be sure to connect pump to a properly grounded outlet only.
- I-3. **WARNING: TO REDUCE RISK OF ELECTROCUTION...**
- I-3a. Do not use this product in or near area where it can fall or be pulled into water or other liquids.
- I-3b. Do not reach for this product if it has fallen into liquid. Unplug immediately.
- I-3c. Never operate this product outdoors in the rain or in a wet area.
- I-4. **DANGER: TO REDUCE RISK OF EXPLOSION OR FIRE...**
- I-4a. Do not use this pump in or near explosive atmospheres or where aerosol (spray) products are being used.
- I-4b. Do not pump anything other than atmospheric air.

- I-4c. Do not pump combustible liquids or vapors with this product or use in or near an area where flammable or explosive liquids or vapors may exist.

- I-4d. ~~Do not use this product near flames.~~



FAILURE TO OBSERVE THE ABOVE SAFETY PRECAUTIONS COULD RESULT IN SEVERE BODILY INJURY, INCLUDING DEATH IN EXTREME CASES.

II. INSTALLATION

II-1. INTRODUCTION

This manual has been compiled not only for the care and maintenance of the Welch Dry Dual Function Pressure/Vacuum pump now in your possession, but as a helpful reference and guide to prevent many problems which can occur if used improperly.

II-2. UNPACKING

Carefully remove the Pressure/Vacuum pump from the shipping case and unfasten and remove the wooden skid. Preserve all paperwork for future reference. If damage has occurred from shipment a claim must be filed with the carrier immediately; preserve the shipping carton for inspection by the carrier. If you are required to communicate with your dealer or Welch Vacuum, be sure to include your order numbers for quick identification. Do not return the pump to the factory without first calling for a returned goods number.

II-3. PUMP MOUNTING

Rubber feet are attached to the pump. Rubber feet are excellent for applications involving a semi-flexible surface such as a bench top; they help to isolate noise and eliminate creeping. All Pressure/Vacuum pumps should be mounted on a horizontal plane.

II-4. PUMP LOCATION

The pressure/vacuum pump should be located preferably in a clean, dry, and well ventilated area. Please be sure not to block the ventilation holes located on the motor housing. The pump should be placed where the surrounding temperature remains between 10°C and 40°C (50°F and 104°F). Always check to insure the location chosen is protected from direct or indirect moisture contact. Welch recommends that the pump be installed at the highest point within the system to prevent possible water condensate from entering the pump. The pump should be located as closely to its system in order to utilize it most efficiently.



Warning! The motor is thermally protected and will automatically restart unexpectedly when the overload device resets. Don't pump flammable or explosive gases or vapors or operate this pump in an atmosphere containing flammable or explosive gases or vapors.

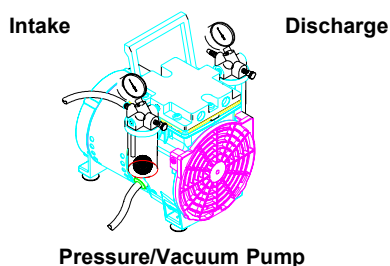
II-5. INTAKE AND DISCHARGE PROVISIONS

Two regulators and two gauges make it easy to meet your vacuum and pressure requirements. The vacuum regulator and vacuum dial gauge is attached to the intake port. The vacuum regulator allows the vacuum level to be set between roughly atmospheric pressure and the maximum vacuum allowed for the pump model. A moisture trap keeps water from accidentally being drawn into the unit.

The pressure regulator and pressure dial gauges are attached to the discharge port. The pressure regulator allows discharge pressure to be set between atmospheric and the maximum possible for the pump model. Discharge air is filtered and noise is muffled with a filter.

Note: Adjusting either the pressure or vacuum regulators will affect the performance of the pump.

PROPERLY IDENTIFY THE INTAKE AND DISCHARGE OF THE PUMP



WARNING!: Never Block The Discharge Port. If the exhaust is blocked, pressure will build-up in the pump above its rated operating pressure.

Be sure to call Welch technical service prior to start-up at (847) 676-8800 if you have any questions.

II-6. ELECTRICAL POWER

II-6a. Power Source Review

Review the power source and the motor rating to be sure they agree in voltage, phase, and frequency. Serious damage may occur to the motor if it is connected to an improper voltage. All Welch pumps must be grounded. Grounding reduces the risk of electric shock in the event of an electrical short circuit. The plug must be plugged into a properly grounded outlet. Consult your local electrical codes if you have doubts.

II-6b. Overload Protection.

Motor thermal overload protection is made available by the motor manufacturer as an aid to minimize motor failure.

Overload protection is a standard feature on both 50 and 60 Hz single-phase-motors. The motors have automatic overload protection. Automatic reset protection is designed to reset itself after a predetermined cooling period. If the fault to the drive remains unaltered, the motor will cycle on and off until the fault is corrected.

II-7. VACUUM CONNECTIONS

All pressure/vacuum pumps come with intake and discharge hose barbs which accept 1/4" ID rubber pressure/vacuum hose. Hose clamps should be used to hold the hose in place. Since all three models operate in the viscous flow regime, the small diameter of the hose will generate minimal conductance loss. For best results, Welch recommends the length of the tubing between the pump and the chamber be kept as small as possible.

II-8. VACUUM AND PRESSURE GAUGES

All models of pressure/vacuum pumps come with dial gauges mounted on the regulator assemblies. The vacuum gauge gives negative pressure - that is pressure below atmospheric. The reference point for the vacuum gauge is atmospheric pressure.

The pressure gauge gives pressure above atmospheric. The

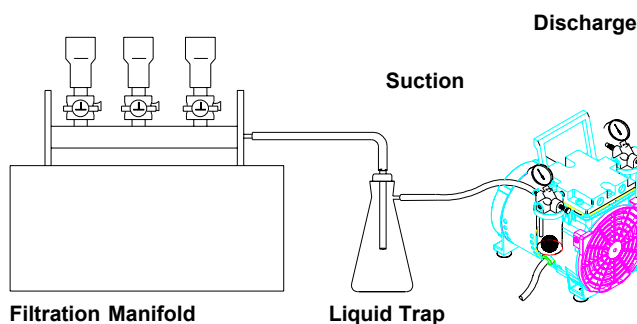
reference point for the pressure gauge is atmospheric pressure.

Please keep in mind that atmospheric pressure tends to vary from day to day. As a result of this variability, the dial vacuum gauge will indicate slightly different maximum vacuum readings from day to day.

II-9. TRAPS

II-9a. The need for a Trap

The pumps will handle humid air. All wetted aluminum parts are treated for corrosion protection from moisture. All other wetted parts are stainless steel. A plastic trap with a ball check valve is attached to the regulator assembly to prevent water condensate from accidentally being ingested into the pump. If there is a chance liquid may be drawn from the process under evacuation, Welch recommends a liquid trap be placed between the process and the pump. A simple liquid trap is a filtering flask. See figure below.



When a heavy load of water vapor is evolved from the vacuum process, a cold trap is recommended to help prevent damage to the pump mechanism. The cold trap, immersed in a suitable Dewar flask, is installed so that the water vapors may come in contact with the surfaces of the trap and condense. Commonly used refrigerants are liquid nitrogen or dry ice and acetone or alcohol. Dry ice provides sufficient cooling to freeze out most heavy water vapor loads. A variety of cold traps are available from Welch. Please call our customer service department for additional information at (847) 676-8800.



WARNING!: The pump is not recommended for pumping acid, base or organic vapors or gases. Serious damage to the pump will shorten the pump's service life. In addition, pumping flammable vapors or gases can lead to serious safety hazard leading to fire or explosion.

II-9b. The Care of a Trap

When using a cold trap the refrigerant should be maintained at a high level in the flask to keep the trap at a uniformly low temperature. If the trap is rewarmed it may allow re-evaporation of the condensate. The refrigerant add tube on the liquid nitrogen trap should not be obstructed as the refrigerant boil-off can produce dangerously high pressures. If the trap becomes saturated it should be disconnected from the system, drained, and cleaned. An increase in pressure in the vacuum system will normally indicate that the trap has become saturated. To clean the trap, remove the trap from the system and allow the trap to warm up and rinse off the condensate with a suitable solvent in a fume hood. Thoroughly clean and dry the trap before reinstalling into the system.

III. OPERATION

III-1. STARTING PROCEDURES

III-1a. Starting A Welch Pressure/Vacuum Pump

Before attaching the pump to a system, familiarize yourself with the function and action of the pressure/vacuum pump that you have acquired. Review the power requirements as described in Section I-6. Welch recommends running the pump for a few minutes to warm it up, before use. The warm-up improves the pumps ability to handle humid air.

III-1b. Cleanliness

Take every precaution to prevent foreign particulates from entering the pump. Particulates will damage the pump's performance. If you find that particulates come off the process during evacuation, a particulate trap in the foreline will work. A simple, inexpensive trap may be made by placing glass wool in a glass or plastic tube. Screens must be inserted to hold the glass wool in place.

III-2. LEAK DETECTION

The importance of eliminating all leaks in a vacuum system is obvious. The pump must remove this added volume of leaked gas to maintain the desired vacuum. Leaks for these pump can be located by slightly pressuring the system and painting the suspected area with a thick soap solution. Escaping air will produce soap bubbles.

III-3. OPERATING PRESSURE RANGE

Pressure/Vacuum pumps are designed to be run from slightly below atmospheric to their maximum vacuum level on the intake side. The pumps also may be run from atmospheric to their maximum rated pressure rating. Consult the Specification Table (See Section VI, Specifications) for the ratings of your specific model.

III-4. SHUTDOWN PROCEDURES

After use, Welch recommends the pump be run for about 2 minutes disconnected from the vacuum process. The air pumped through the mechanism will purge out water vapor or droplets of water condensate that may have formed on the inside of the pump. This purge of the pump mechanism helps prevent corrosion.

IV. MAINTENANCE

Welch dry pressure/vacuum units are 100% oil-free. The pump employs a non-lube piston and cylinder. No maintenance is necessary for the bearings. All bearings are sealed and permanently lubricated. Lubrication should not be attempted. The units are built for continuous duty operation with the quietness and durability of a diaphragm, but with piston performance.

V. TROUBLESHOOTING

V-1. VACUUM PROBLEMS

Leakage, contamination, and unusual outgassing are the general causes of problems associated with poor vacuum. To operate at maximum efficiency, a system must be thoroughly clean. If the system is completely clean and free from leaks, and unwarranted vacuum problems still exist, the pump should be checked. A simple criterion for the condition of the pump is the determination of its maximum vacuum capability. This can be accomplished by blocking of the intake and reading the vacuum level on the gauge (See Section II-8).

V-2. PRESSURE PROBLEMS

Leakage and contamination are the general causes of problems associated with poor pressure. To operate at maximum efficiency a system must be thoroughly clean. If the system is completely

clean and free from leaks, and unwarranted pressure problems still exist, the pump/compressor should be checked by a service technician. (See Section II-8).

V-3. TROUBLESHOOTING GUIDE

Poor Pumping Speed	Poor Pressure	Loud Unit	Possible Cause	Corrective Action
X	X	X	Damaged Valves	Replace flapper valves
X	X	X	Debris in Valves	Remove debris and check for valve damage
X	X	X	Damaged Gaskets	Replace gaskets
X	X	X	Loose Head Screws	Tighten headscrews
X	X		Loose Fittings	Tighten fittings

VI. SPECIFICATIONS

Note: *230V 60Hz 1Ph models have a maximum continuous pressure of 50 PSIG (5 x 10⁵ Pascal)
**50 Hz models provided with CE mark.

WARRANTY

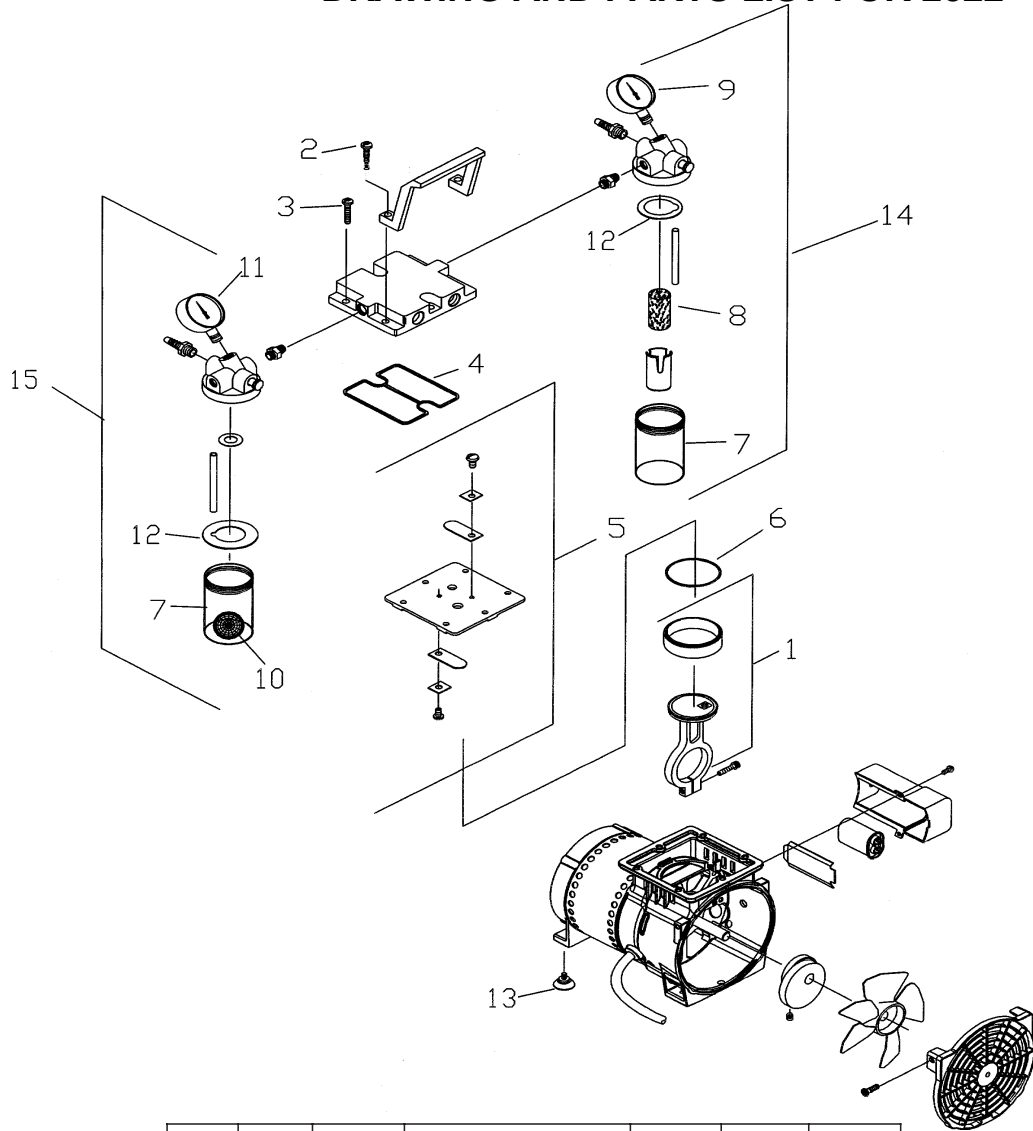
This Welch Vacuum product is warranted to be free from defects in material and workmanship. This liability of Welch Vacuum, Thomas Industries, Inc. under this warranty is limited to servicing, adjusting, repairing, or replacing any unit or component part which in the judgment of Welch Vacuum, Thomas Industries Inc. has not been misused, abused, or altered in any way or damaged by ingestion of foreign material causing impaired performance or rendering it inoperative. Foreign material includes solids, liquids other than pump oil, corrosive gases, and recondensed water or solvent vapor. No other warranties are expressed or implied. The method of executing this warranty: servicing, adjusting, repairing, or replacing, shall be at the discretion of Welch Vacuum, Thomas Industries, Inc. Vacuum pumps that have been operated within a vacuum system, or other system, for any period, however short, will be repaired under this warranty rather than replaced.

The warranty is effective for one year from the date of original purchase when:

1. The warranty card has been completed and returned.
2. The product is returned to the factory or other designated service centers, freight prepaid.
3. The product in our judgment is defective through no action or fault of the user

If the product has become defective through misuse, abuse, alteration, or ingestion of foreign material, repairs will be billed regardless of the age of the product. In this event, an estimate of the repair costs will be submitted and authorization of these charges will be required before the product is repaired and returned.

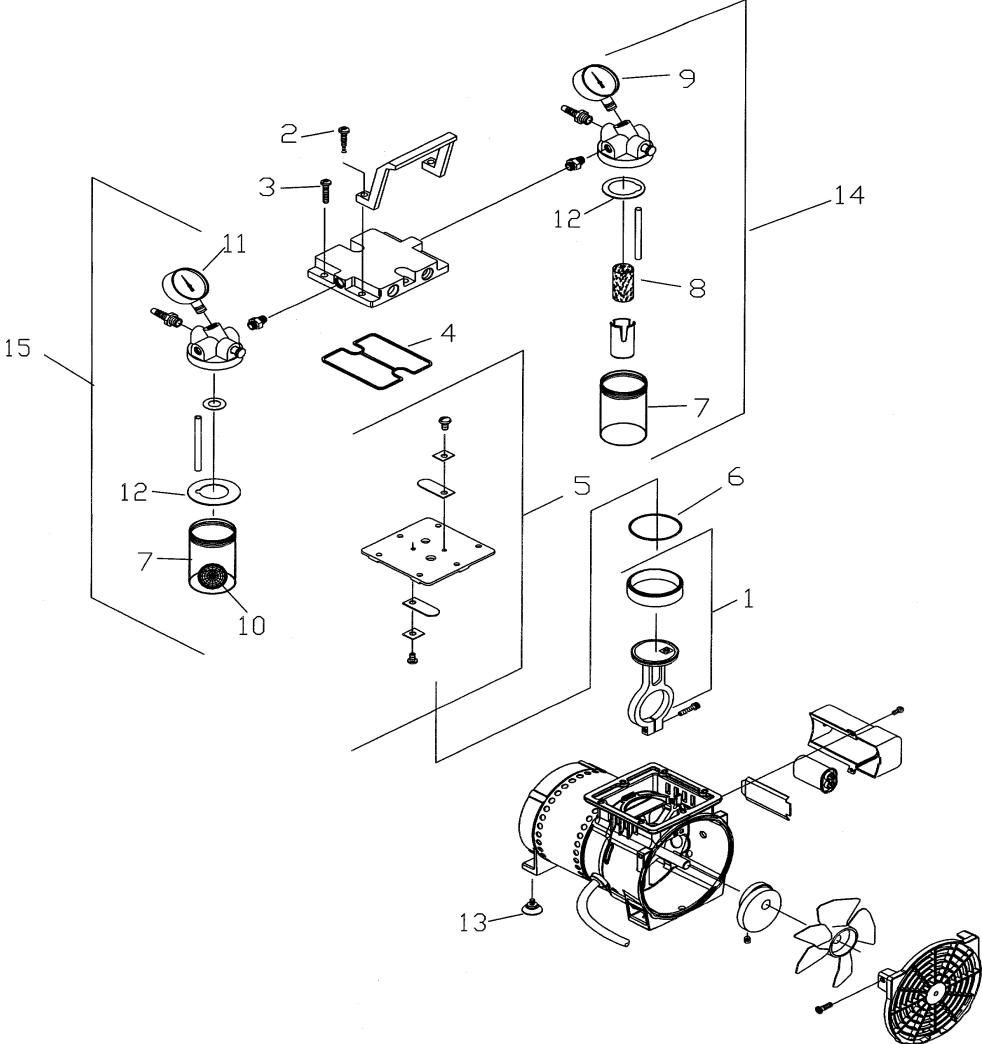
DRAWING AND PARTS LIST FOR 2522



Item Number	Quantity	Part No.	Description	Service Kit 2522K-03	Seal Gasket Kit 2522K-04	Service Kit-Feet 2500K-04
1	1	2522K-01	Connecting Rod Assembly	1		
2	2	Note 1	Handle Screw	2		
3	4	Note 1	Head Screw	4		
4	1	Note 1	O-Ring Head	1	1	
5	1	2565K-02	Valve Plate Assembly	1		
6	1	Note 1	O-Ring Cylinder	1	1	
7	2	Note 1	Jar - Plastic	1	1	
8	1	Note 1	Filter Element	1	1	
9	1	638787	Pressure Gauge			
10	1	Note 1	Ball	1	1	
11	1	638788	Vacuum Gauge			
12	2	Note 1	Gasket	1	1	
13	4	Note 1	Rubber Suction Feet			4
14	1	2522K-06	Pressure Regulator Assembly			
15	1	2522K-05	Vacuum Regulator Assembly			

Note 1: These parts are not available separately, but are supplied within kits

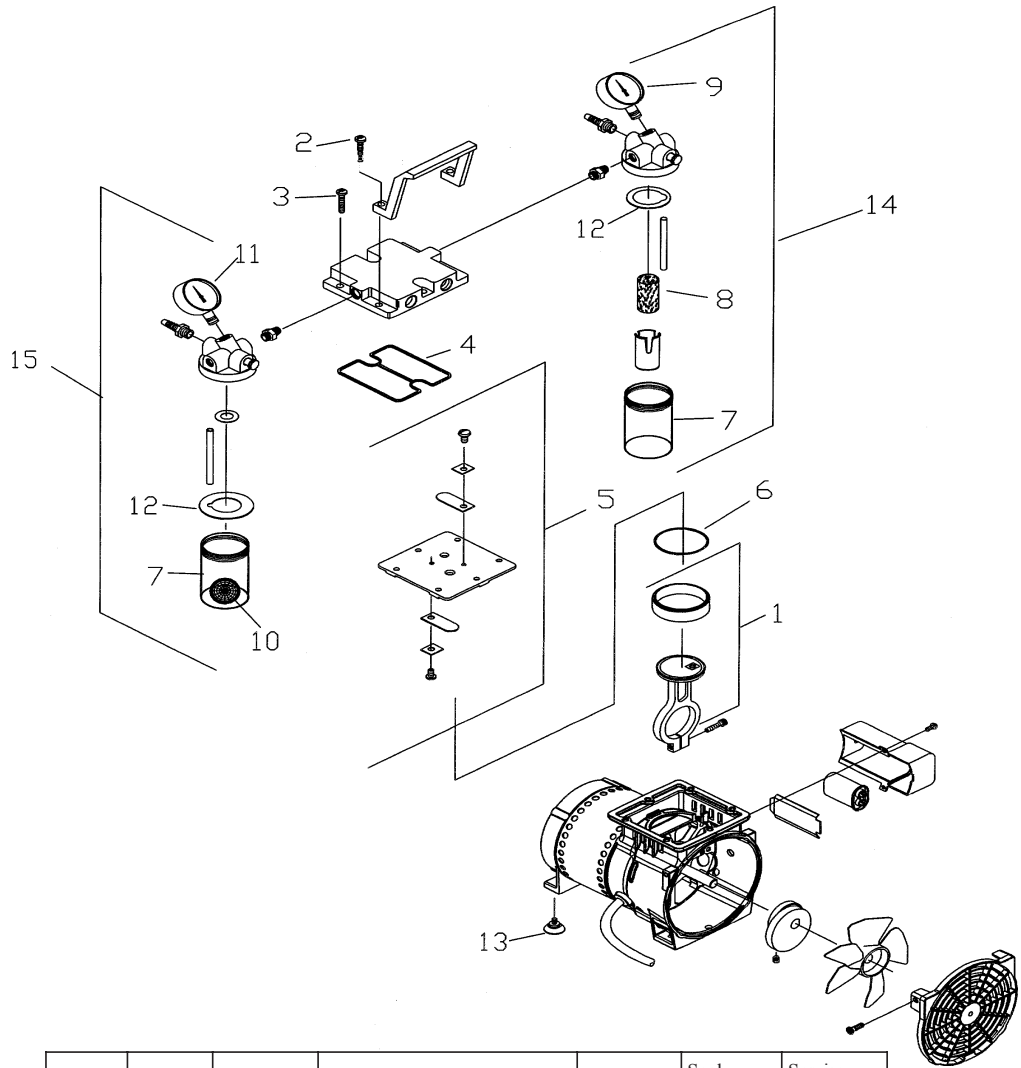
DRAWING AND PARTS LIST FOR 2534



Item Number	Quantity	Part No.	Description	Service Kit 2522K-03	Seal Gasket Kit 2522K-04	Service Kit-Feet 2500K-04
1	1	2522K-01	Connecting Rod Assembly	1		
2	2	Note 1	Handle Screw	2		
3	4	Note 1	Head Screw	4		
4	1	Note 1	O-Ring Head	1	1	
5	1	2565K-02	Valve Plate Assembly	1		
6	1	Note 1	O-Ring Cylinder	1	1	
7	2	Note 1	Jar - Plastic	1	1	
8	1	Note 1	Filter Element	1	1	
9	1	71-1292	Pressure Gauge			
10	1	Note 1	Ball	1	1	
11	1	653792	Vacuum Gauge			
12	2	Note 1	Gasket	1	1	
13	4	Note 1	Rubber Suction Feet			4
14	1	2522K-06	Pressure Regulator Assembly			
15	1	2522K-05	Vacuum Regulator Assembly			

Note 1: These parts are not available separately, but are supplied within kits

DRAWING AND PARTS LIST FOR 2545



Item Number	Quantity	Part No.	Description	Service Kit 2522K-03	Seal Gasket Kit 2522K-04	Service Kit-Feet 2500K-04
1	1	2522K-01	Connecting Rod Assembly	1		
2	2	Note 1	Handle Screw	2		
3	4	Note 1	Head Screw	4		
4	1	Note 1	O-Ring Head	1	1	
5	1	2565K-02	Valve Plate Assembly	1		
6	1	Note 1	O-Ring Cylinder	1	1	
7	2	Note 1	Jar - Plastic	1	1	
8	1	Note 1	Filter Element	1	1	
9	1	71-1292	Pressure Gauge			
10	1	Note 1	Ball	1	1	
11	1	653792	Vacuum Gauge			
12	2	Note 1	Gasket	1	1	
13	4	Note 1	Rubber Suction Feet			4
14	1	2522K-06	Pressure Regulator Assembly			
15	1	2522K-05	Vacuum Regulator Assembly			

Note 1: These parts are not available separately, but are supplied within kits

Vacuum Pump Repair Facility

7301 N. Central Ave
Skokie, IL 60077
Phone: (847) 676-8800 Ext. 1
Fax : (847) 677-8606

copyright 1996, 1997, 1998, 1999 Welch Vacuum, Thomas Industries Inc.

Welch is a registered trademarks of Welch Vacuum, Thomas Industries, Inc.

P/N 642230E 08/01